

# INTEGRATED ANTENNA DATASHEET

## 1. Features

RAD-2834 is a custom designed sheet metal antenna intended for Bluetooth applications. Antenna is assembled in to a printed circuit board (PCB) of the product where it is used.

Integrated antenna is product specific and this specification is valid only when antenna is installed into the product it is designed for. Antenna uses an impedance matching circuit integrated to the host device PCB.

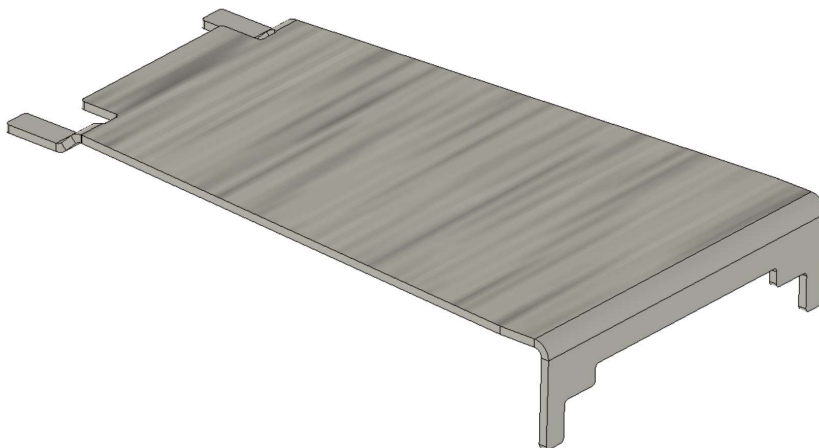


Figure 1 Picture of the antenna

## 2. General Data

Part Number	RAD-2834
Frequency	2400MHz-2487MHz
Operating temperature	-30°C to +80°C
Nominal Impedance	50Ω with impedance matching circuit
Connection type	Solder to PCB
Max Power handling	1W

### 3. RF Characteristics

Antenna	RAD-2834
Frequency Range	2400MHz-2487MHz
Max Peak Gain	-7dBi
Return loss	6 dB typical

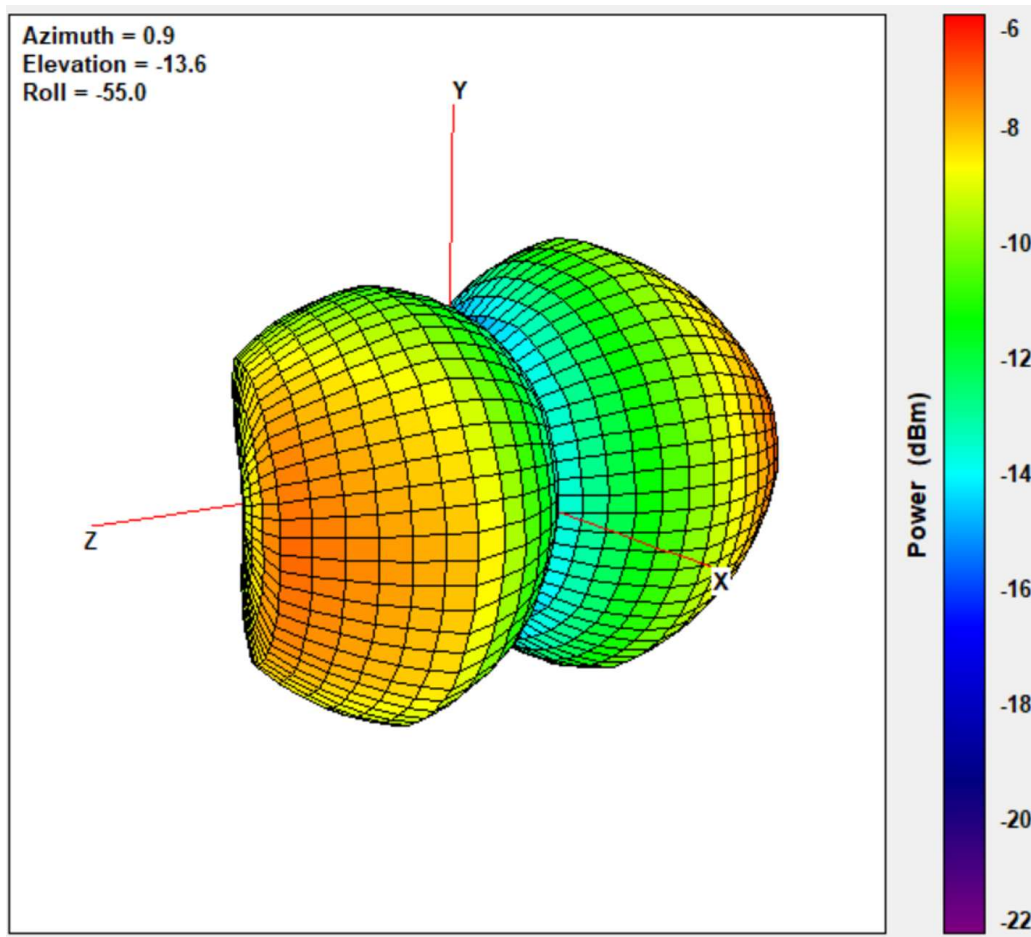


Figure 2. RAD.2834 Antenna radiation pattern at 2440MHz. Measurement has been conducted using the transmitter of the product with power set to 0 dBm

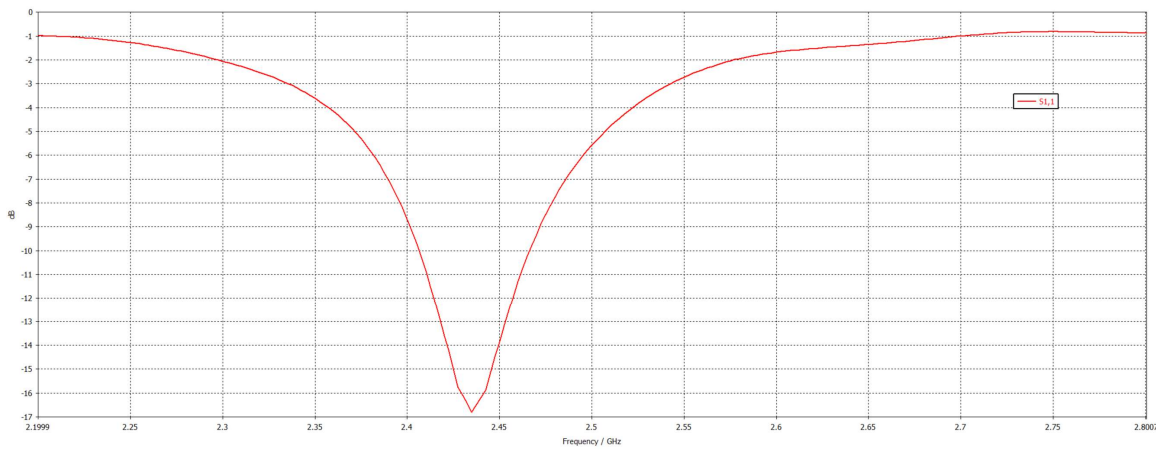
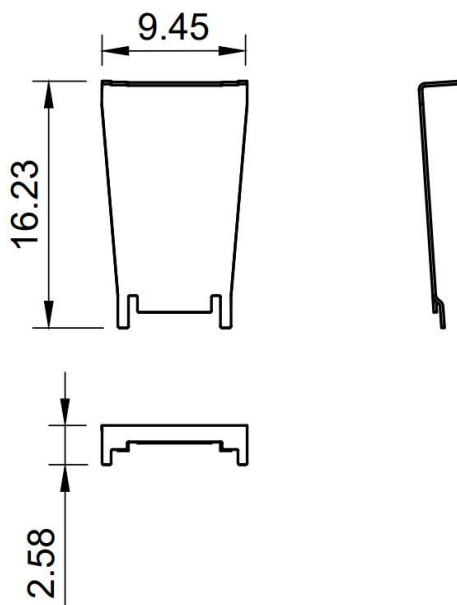


Figure 3 RAD-2834 Antenna S11 measured when assembled at product.

## 4. Mechanical dimensions



Material: CuNi18Zn20,  
S=0.20mm

## 5. Conformity

Antenna is in compliance with the essential requirements and other relevant provisions of Directive 2011/65/EU (RoHS)