

iS1 SmartSystem

User Manual



Masthead

Should you require further information on our products or technical support, please do not hesitate to contact us.

Armatix GmbH
FeringasträÙe 4
85774 Unterföhring
Germany
Tel.: +49 89 / 4 27 29 79 - 0
Fax: +49 89 / 4 27 29 79 - 79
info@armatix.de

Managing directors: Bernd Dietel, Ernst Mauch, Guenter-Maximilian Hefner, Franz Hermann
Company registered offices: Petersberg
Jena County Court
HRB 501907
VAT ID: DE 235056291

Legal disclaimer:

Despite the greatest care taken in the compilation of this document, data can change even at short notice. We can therefore give no guarantee or assume any liability for the up-to-dateness, correctness and completeness of the information contained. Content and layout of the operating manual are protected by copyright. Duplication of the pages or their contents shall require the prior written approval of ARMATIX GmbH, insofar as the duplication is not permitted by law.

Copyrights 2011:
Armatix GmbH, Unterföhring.

All rights reserved. Text, illustrations and diagrams and their layout in this operating manual are protected by copyright laws and other intellectual property rights. The content of this operating manual must not be copied, distributed, modified or made accessible to third parties for commercial purposes.

This device complies with Part 15 of the FCC Rules. Operation is subject to the following two conditions:

1. This device may not cause harmful interference, and
2. this device must accept any interference received, including interference that may cause undesired operation.

Changes or modifications not expressly approved by the party responsible for compliance could void the user's authority to operate the equipment.

Note: This equipment has been tested and found to comply with the limits for a Class B digital device, pursuant to part 15 of the FCC Rules. These limits are designed to provide reasonable protection against harmful interference in a residential installation. This equipment generates, uses and can radiate radio frequency energy and, if not installed and used in accordance with the instructions, may cause harmful interference to radio communications. However, there is no guarantee that interference will not occur in a particular installation. If this equipment does cause harmful interference to radio or television reception, which can be determined by turning the equipment off and on, the user is encouraged to try to correct the interference by one or more of the following measures:

- Reorient or relocate the receiving antenna.
- Increase the separation between the equipment and receiver.
- Connect the equipment into an outlet on a circuit different from that to which the receiver is connected.
- Consult the dealer or an experienced radio/TV technician for help.

Contents

1. Introducing	6
2. Installing drivers	7
3. Uninstalling drivers	15
4. Troubleshooting	16
4.1. Windows XP Forces A Reboot After Installing a Device	16
4.2. Driver Installation Fails And Windows XP Gives Error Code 10	16
4.3. Windows XP Displays An Error And Then Terminates Installation	16
5. Contact Information	18
Appendix A - Revision History	19
Appendix B - Reference	20

List of Figures

Figure 2. 1	8
Figure 2. 2	8
Figure 2. 3	9
Figure 2. 4	9
Figure 2. 5	10
Figure 2. 6	10
Figure 2. 7	11
Figure 2. 8	11
Figure 2. 9	12
Figure 2. 10	12
Figure 2. 11	13
Figure 2. 12	13
Figure 2. 13	144
Figure 4. 1	177

1. **Introducing**

This document describes the process of installing the Armatix iS1 device for the Microsoft Windows XP operating system.

2. Installing drivers

To install the Armatix iS1 device under Windows XP, follow the instructions below:

- Use the iS1 driver CD or download the latest drivers from the Armatix web site and unzip them to a location on your PC.
- If you are running Windows XP or Windows XP SP 1, temporarily disconnect your PC from the Internet. This can be done by either removing the network cable from your PC or by disabling your network card by going to the "Control Panel\Network and Dial-Up Connections", right-clicking on the appropriate connection and selecting "Disable" from the menu. The connection can be re-enabled after the installation is complete. This is not necessary under Windows XP SP 2 if configured to ask before connecting to Windows Update. Windows XP SP 2 can have the settings for Windows Update changed through "Control Panel\System" then select the "Hardware" tab and click "Windows Update".
- Connect the device to a spare USB port on your PC. Once the composite driver has been installed Windows Found New Hardware Wizard will launch. If there is no available Internet connection or Windows XP SP 2 is configured to ask before connecting to Windows Update, the screen shown in Figure 2.1 is displayed. Select "No, not this time" from the options available and then click "Next" to proceed with the installation. If there is an available internet connection, Windows XP will silently connect to the Windows Update website and install any suitable driver it finds for the device in preference to the driver manually selected.



Figure 2. 1

- Select "Install from a list or specific location (Advanced)" as shown in Figure 2.2 below and then click "Next".



Figure 2. 2

- Select "Search for the best driver in these locations" and enter the file path in the combo-box ("C:\CDM 2.02.04" in Figure 2.3 below) or browse to it by clicking the browse button. Once the file path has been entered in the box, click next to proceed.

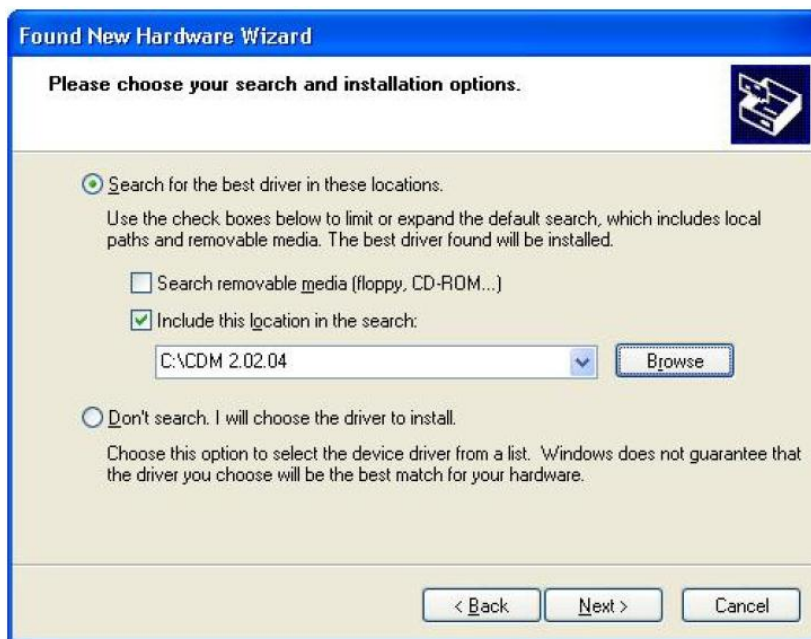


Figure 2. 3

- If Windows XP is configured to warn when unsigned (non-WHQL certified) drivers are about to be installed, the message dialogue shown in Figure 2.4 will be displayed unless installing a Microsoft WHQL certified driver. Click on "Continue Anyway" to continue with the installation. If Windows XP is configured to ignore file signature warnings, no message will appear.



Figure 2. 4

- The screen shown in Figure 2.5 will be displayed as Windows XP copies the required driver files.



Figure 2. 5

- Windows should then display a message indicating that the installation was successful (Figure 2.6). Click "Finish" to complete the installation for the first port of the device.



Figure 2. 6

- The Found New Hardware Wizard will launch automatically to install the COM port emulation drivers. As above, select "No, not this time" From the options and click "Next" to proceed with the installation (Figure 2.7).



Figure 2. 7

- Select "Install from a list or specific location (Advanced)" as shown in Figure 2.8 below and then click "Next".



Figure 2. 8

- Select "Search for the best driver in these locations" and enter the file path in the combo-box ("C:\CDM 2.02.04" in figure 2.9 below) or browse to it by clicking the browse button. Once the file path has been entered in the box, click next to proceed.

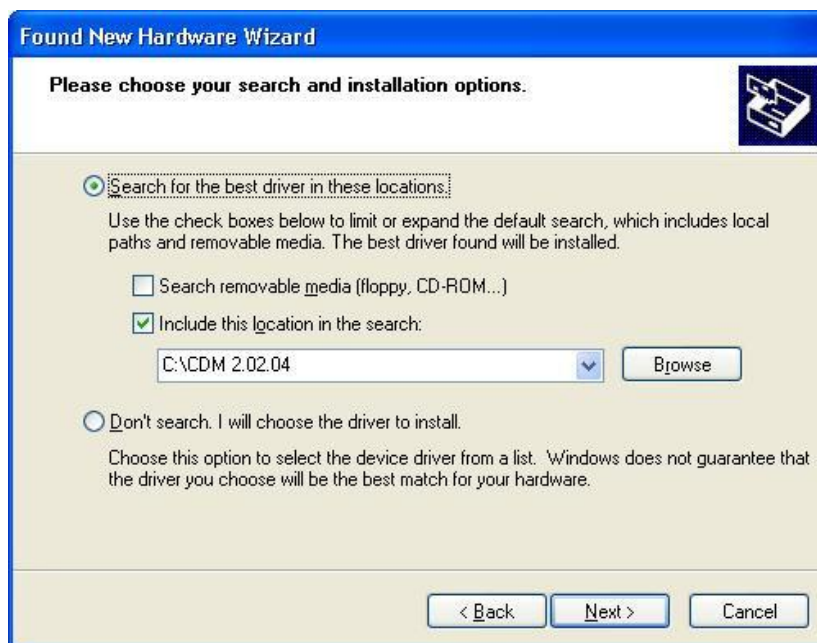


Figure 2. 9

- If Windows XP is configured to warn when unsigned (non-WHQL certified) drivers are about to be installed, the message dialogue shown in Figure 2.10 will be displayed unless installing a Microsoft WHQL certified driver. Click on "Continue Anyway" to continue with the installation. If Windows XP is configured to ignore file signature warnings, no message will appear.



Figure 2. 10

- The screen shown in Figure 2.11 will be displayed as Windows XP copies the required driver files.

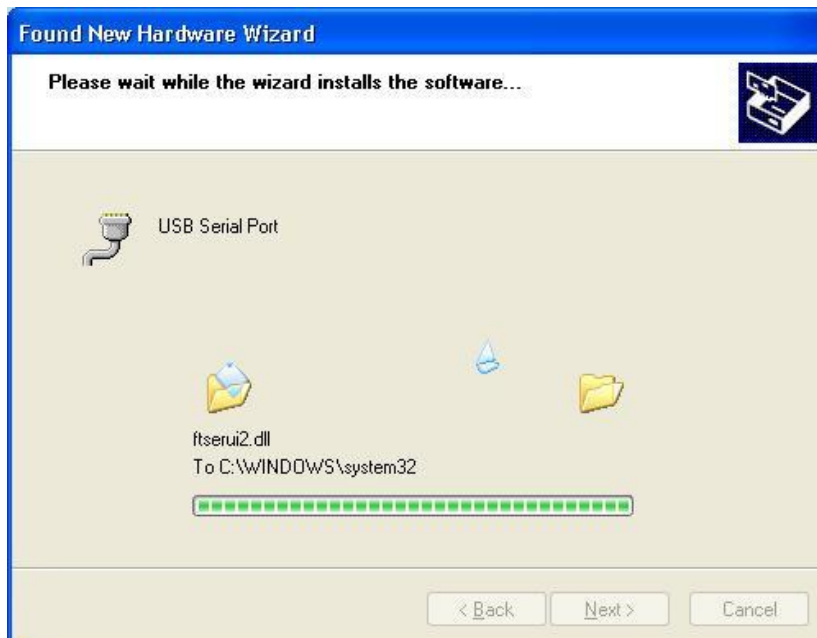


Figure 2. 11

- Windows should then display a message indicating that the installation was successful (Figure 2.12). Click "Finish" to complete the installation for the first

port of the device.



Figure 2. 12

- Open the Device Manager (located in "Control Panel\System") then select the "Hardware" tab and click "Device Manger") and select "View > Devices by Connection", the device appears as a "USB Serial Converter" with an additional COM port with the label "USB Serial Port" (Figure 2.13).

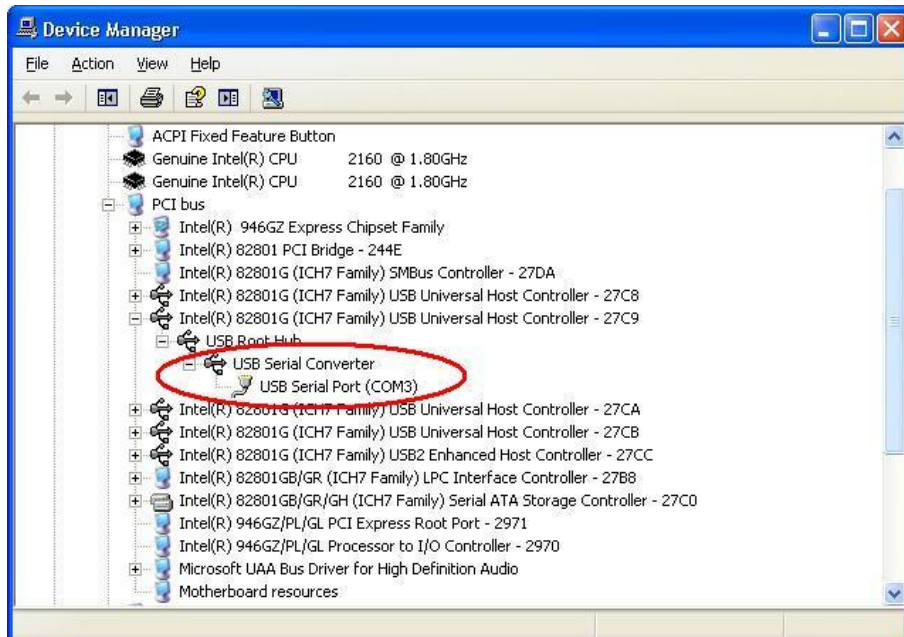


Figure 2. 13

3. Uninstalling drivers

Devices can be removed using the Device Manager by simply right-clicking on the device and selecting "Uninstall". This will delete the associated registry entries for that device only.

Under Windows XP, driver files and OEM INF and PNF files must be removed manually or by using a custom application. OEM INF and PNF files are located in the Windows\Inf directory and can be identified by searching for a VID and PID string matching the device installed e.g. VID_0403&PID_6001. Once the matching OEM INF files are found (e.g. oem10.inf for FTDIBUS.INF and oem11.inf for FTDIPOINT.INF), the corresponding PNF files must also be removed (e.g. oem10.pnf and oem11.pnf). Driver files are located in the Windows\System32 and Windows\System32\Drivers directories.

4. Troubleshooting

4.1. **Windows XP Forces A Reboot After Installing a Device**

This problem can occur if an application is accessing a file while the New Hardware Wizard is trying to copy it. This usually occurs with the FTD2XX.DLL file. Selecting not to restart the computer then unplugging and re-plugging the device may allow the device to function properly without restarting. Restarting the machine will allow the device to work correctly.

4.2. **Driver Installation Fails And Windows XP Gives Error Code 10**

Windows error code 10 indicates a hardware error or failed driver installation. This error may appear if a device has insufficient power to operate correctly (e.g. plugged into a bus powered hub with other devices), or may indicate a more serious hardware problem. Also, it may be indicative of USB root hub drivers being incorrectly installed.

4.3. **Windows XP Displays An Error And Then Terminates Installation**

If the following screen is displayed with this message, Windows XP has been configured to block the installation of any drivers that are not WHQL certified.



Figure 4. 1



Two options are available to successfully install the device. Either a certified version of the driver can be installed (if available) or the driver signing options can be changed to either warn or ignore to allow the installation to complete.

To change the current driver signing setting, go to "Control Panel\System", click on the "Hardware" tab and then click "Driver Signing". The desired signing option may then be selected.

5. Contact Information

Armatix GmbH

Feringastr. 4
D-85774 Unterfoehring
Germany
Tel: +49 (0) 89 4272979 0
Fax: +49 (0) 89 4272979 79
E-Mail: info@armatix.de

Appendix A - Revision History

Version 0.1	First Draft	01/07/2011
-------------	-------------	------------

Appendix B - Reference

Future Technology Devices International Ltd
Application Note AN_104
FTDI Drivers Installation guide for Windows XP
Web: <http://www.ftdichip.com>