

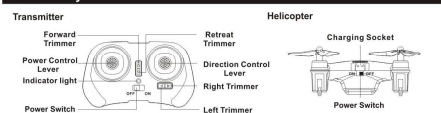
# WINYEA®

## Instruction Manual of the MINI Helicopter

### Part List

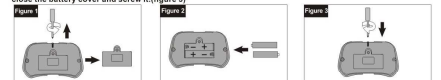


### Part Identify



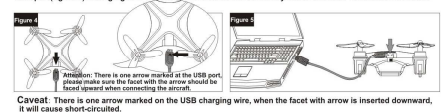
### Battery Installation Method

**Battery Installation Method:**  
Please unscrew the battery cover on the transmitter by using the screwdriver, and then open the battery cover (figure 1). Load the two 1.5V "AAA" battery as per the correct "+" "-" (figure 2) polarity shown. Finally please close the battery cover and screw it (figure 3).



### Charging Ready

**Helicopters charging:**  
Switch off the aircraft (figure 4) and take out the charging wire. One end is connected to the charging port at the back of the aircraft. Another end is connected with the inserting port of the computer or the charger with the USB port (figure 5). Charging time is about more than 25 minutes and you can use it for more than 5 minutes.



**Caution:** There is one arrow marked on the USB charging wire, when the facet with arrow is inserted downward, it will cause short-circuited.

### Instructions

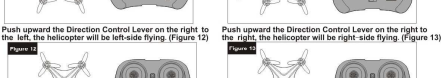
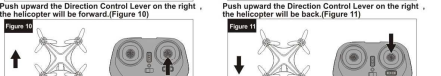
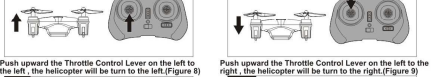
1. Decoding Operation between the transmitter and the helicopter.  
Switch on the aircraft, the indicator will be ON and keep flashing. Place it on the level ground and make it in the stable state. Then switch on the transmitter, the transmitter will send out sound and the indicator of the aircraft will stop flashing and keep the state of eternal bright. Push the throttle lever on the left side of the transmitter to the highest position and then pull it back to the lowest position, the transmitter will send out sound once again, which represents the calibration has been finished. In the meantime, the direction control lever on the right side should be kept in the middle position in order to guarantee the flying stability, the transmitter should be operated like this every time it is switched on.

2. Helicopter Level Calibration. When the aircraft become unstable suddenly during the course of flying, please place it on the level ground, then push both control levers to the left down corner in the same time, the light of the aircraft will be flashing quickly and then enter into the state of eternal bright, the rest of the gyro is thus finished and the aircraft can be flying in the stable state.

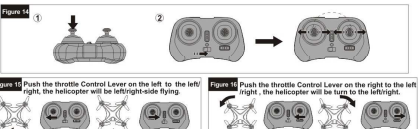
3. Recharging Function of Low Voltage.  
1) When the indicator of the transmitter keeps non-stopped flashing while sending out "ON" sound, this means that it has entered into the state of Low-voltage and insufficient electricity. This time, please push downward slowly the throttle lever on the left to let the aircraft land safely. Then please replace the battery.

2) When the indicator of the aircraft keeps non-stopped flashing, it represents that it has entered into the low-voltage state. This time please let the aircraft land firstly and then you need to charge the aircraft.  
(Prompt: Under the condition of low-voltage, the aircraft can not make tumbling action.)

### Manipulation Instructions



**Rotate / side fly lever position swap**  
Switch on the aircraft first; Keep pressing the control lever on the left side of the transmitter while switching on (figure 14), you can switch between the left steering and the right-side flying (figure 15 16) if you want to switch it for once again, please switch on the aircraft once again, then switch on the power of the transmitter.

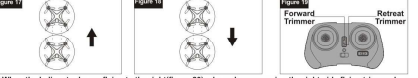


### Switch Operation between the High/Low Speed Mode

Switch on the transmitter, this time it is defaulted as Low Speed Mode. Press the Throttle Lever on the left (As shown in Figure 1), it will switch from Low-speed Mode into High-speed mode. If you want to switch it into Low-Speed Mode, just simply press the Control Lever once again and you can switch it into Low-Speed Mode. Low-speed Mode is defaulted when switching on the transmitter.

### Trimmer

1. When the helicopter keeps flying to the forward or tendency to front (figure 17), please keep pressing the retreat flying trimmer key (figure 18).  
2. When the helicopter keeps flying to the back or tendency to rear (figure 18), please keep pressing the forward flying trimmer key (figure 19).



### Somersault Performing The Action



### Matters needing attention

**Attention!** Please read the instructions carefully before use. The packaging must retained, contains important information.  
-For the battery, don't overcharge, excessive charge will cause fire or explosion. When the battery is not charging, please immediately stop charging, can only use the designated charger.  
-Slowly forbidden to children under the age of 14 helicopters. In the use of aircraft, to ensure that the aircraft has a certain distance from you, about 15m, to avoid the supervision of adults.  
-Not charging the battery cannot be recharged. Before charging the product must be removed first rechargeable batteries.  
-When charging the battery, shall be carried out under strict supervision, different types of batteries or old and new battery cannot be mixed.  
-Can only use the same or similar types of batteries, battery should be in the correct polarity.  
-Running out of battery should be removed from the product, the power supply terminals should not be short circuit.  
-Advice and no obstruction in the open places of remote control helicopters.  
-If the helicopter power is too low, will affect the use, please recharge. If long time not to use the remote control, please put the battery in order to avoid battery leakage, damage.

### Safety regulations

- When not in use, turn off the product and the power of the remote control.
- Ensure that the product in your line of sight range, you may at any time control.
- Advise parents when using in the guidance.
- The remote control should use new alkaline batteries.
- Avoid the products replace the battery power completely exhausted.
- Users should keep this manual for reference.
- Users should strictly comply with the factory operating the direction of this toy.

### Battery Cautions

- Non-rechargeable batteries are not to be recharged
- Rechargeable batteries are to be removed from the transmitter before being charged (Transmitter only).
- Rechargeable batteries are only to be charged by an adult
- If different types of batteries or new and used batteries are not to be mixed (Transmitter only).
- Only batteries of the same or equivalent type as recommended are to be used.
- Batteries are to be inserted with correct polarity
- Exhausted batteries are to be removed from the transmitter
- The supply terminals are not to be short-circuited.
- Do not mix old and new batteries (Transmitter only)
- Do not mix alkaline (manganese) and/or rechargable (nickel-cadmium) batteries (Transmitter only)

### Maintenance And Repair

- It keep time not to spray this product, you must remove the battery (applicable to the remote control).
- Commonly used wet cloth to clean this product.
- Don't let this toy is immersed in the water, because it will damage electronic components.

### Problem solving instruction

Problem	Reason	Processing method
No power supply remote control	1. The ON/OFF switch in the "OFF" position. 2. No battery in the battery. 3. The battery run out. 4. Remote control the power light is flashing.	1. The ON/OFF switch in the "ON" position. 2. Check the battery. 3. Replace the new battery. 4. Replace the battery.
Can't remote control	3. The wind is too big.	3. Don't flying under the condition of the wind, its wind may cause limitation of aircraft, or get to the edge of your control the flight.
Helicopter can't fly	1. The rotor rotational speed is too slow. 2. The helicopter has not fully charged.	1. The throttle button to push up. 2. As the helicopter is fully charged.
Helicopter landing slow	Set the throttle back and forth as fast.	Slowly back to the constitution that play for helicopter.
Helicopter did not respond	Aircraft gyroscopic system is not open.	Close the switch after the restart, and the plane flat in a stable state.
The helicopter loses control	Too far distance the transmitter' s controlling distance.	It is highly recommended to keep the helicopter flying within 20 meters away from the transmitter.

### Safety Warning

- Model after the launch, please do not contact model of high speed rotating parts (including main blades, etc.) they can cause damage.
- Model using modification after use, the motor will produce a high temperature, please don't touch, stop using will be gradually cooled down.
- Can not be used under high voltage line operation, cannot be used in the thunderstorm days operation, so as not to cause safety accidents.
- Warning: please do not alter any product, may result in product failure, or won't be able to control.

Warning: Changes or modifications to this unit not expressly approved by the party responsible for compliance could void the user's authority to operate the equipment.

NOTE: This equipment has been tested and found to comply with the limits for a Class B digital device, pursuant to Part 15 of the FCC Rules. These limits are designed to provide reasonable protection against harmful interference in a residential installation. This equipment generates, uses and can radiate radio frequency energy and, if not installed and used in accordance with the instructions, may cause harmful interference to radio communications.

However, there is no guarantee that interference will not occur in a particular installation. If this equipment does cause harmful interference to radio or television reception, which can be determined by turning the equipment off and on, the user is encouraged to try to correct the interference by one or more of the following measures:

- Reorient or relocate the receiving antenna.
  - Increase the separation between the equipment and receiver.
  - Connect the equipment into an outlet on a circuit different from that to which the receiver is connected.
  - Consult the dealer or an experienced radio/TV technician for help.
- This device complies with Part 15 of the FCC Rules. Operation is subject to the following two conditions: (1) This device may not cause harmful interference, and (2) This device must accept any interference received, including interference that may cause undesired operation.
- WANYA TOYS LIMITED, declares that this [type of equipment] is in compliance with the essential requirements and other relevant provisions of Directive 1990/53/EEC.