

Product Similarity Declaration

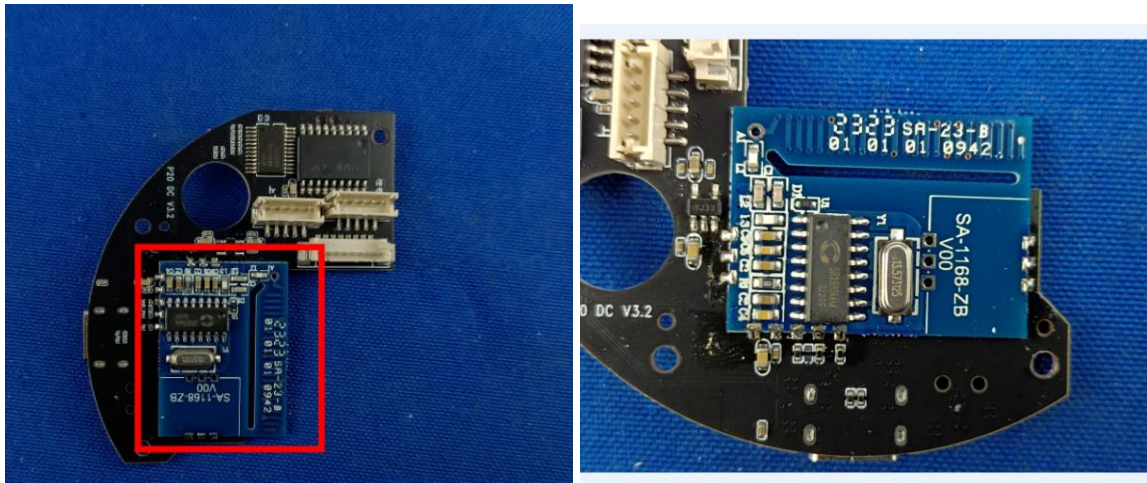
Product name: iBaby Monitor i20

Model name: i20, i20 Pro, i20 Plus, i20S, i20L, P20i

FCC ID: ZUXIBB-I20

We (iBaby Labs, Inc.) hereby state that all the models are electrical identical including the same software parameter and hardware design (i.e., circuit design, PCB Layout, RF module/circuit, antenna type(s) and antenna location, components on PCB, etc.), same mechanical structure and design (including product enclosure, materials, etc.), the only difference is the model name and 433 RX features. (The i20S and P20i are equipped with the 433 RX function (433 Reception is added to the hardware module.), other models do not come with it.)

i20S&P20i: 433 Reception is added to the hardware module, The specific location is on the power supply board. (As shown below)



Signature:

David Ma

Name: David Ma

iBaby Labs, Inc.

Title: Technical Support Engineer

Date: 8.26.2024