



Gobi3000™ Module Regulatory Internal Photos

80-N2162-206 Rev. B

July 23, 2010

**Submit technical questions to:
regulatory.support@qualcomm.com**

QUALCOMM is a registered trademark of QUALCOMM Incorporated in the United States and may be registered in other countries. Other product and brand names may be trademarks or registered trademarks of their respective owners. CDMA2000 is a registered certification mark of the Telecommunications Industry Association, used under license, ARM is a registered trademark of ARM Limited. QDSP is a registered trademark of QUALCOMM Incorporated in the United States and other countries.

This technical data may be subject to U.S. and international export, re-export, or transfer ("export") laws. Diversion contrary to U.S. and international law is strictly prohibited.

QUALCOMM Incorporated
5775 Morehouse Drive
San Diego, CA 92121-1714
U.S.A.

Copyright © 2010 QUALCOMM Incorporated.
All rights reserved.

QUALCOMM®
2011.02.23 at 02:52:25 PST
generic-option.com

July 23, 2010

Gobi3000™ Module Regulatory Internal Photos
80-N2162-206 Rev. B

Revision History

Date	Change Description	Revision	Editor(s)
07/14/2010	Initial Release	A	Paul Jayne
7/23/2010	New Photos	B	John Forrester

Figure 1 Gobi3000 Module Top View Internal Photograph (Shield Removed)

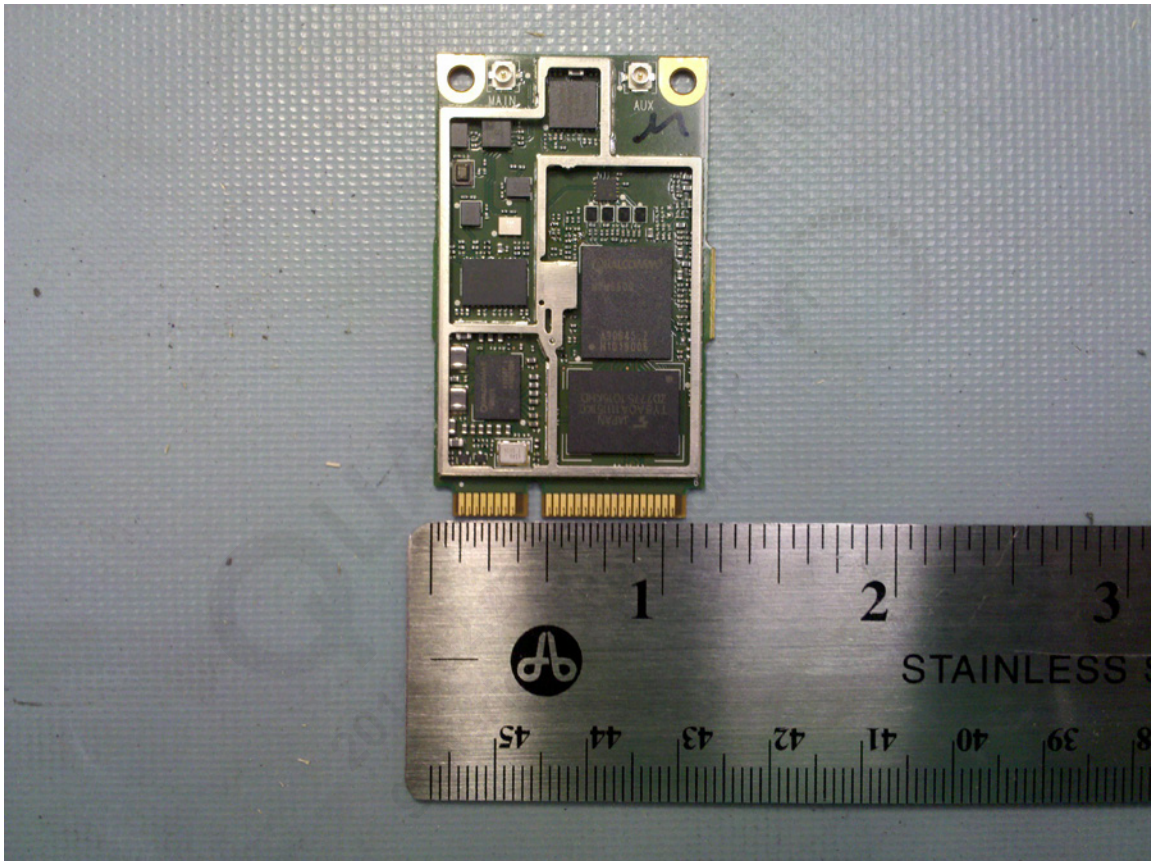


Figure 2 Gobi3000 Module Bottom View External Photograph (Label Removed)