

KÄRCHER

RCV 3 Robot Vacuum Cleaner



**Register
your product**
www.kaercher.com/welcome



97781860 (01/24)

Contents

ROBOT VACUUMS AND MOPS OPERATOR MANUAL	2	Initial commissioning	10
IMPORTANT SAFETY INSTRUCTIONS	2	Initial startup	12
Customer Service	6	Operation	14
Accessories and spare parts	6	Transport	18
Technical data	6	Storage	19
Environmental protection	7	Care and service	19
Description of the device	8	Troubleshooting guide	23
Functional description	9	Disposal	26

ROBOT VACUUMS AND MOPS OPERATOR MANUAL

IMPORTANT SAFETY INSTRUCTIONS

When using this product basic precautions should always be followed, including the following:

READ ALL INSTRUCTIONS BEFORE USING THIS MACHINE

This device is exclusively intended for private household use.

In addition to the notes in the operating instructions, the general safety regulations and accident prevention guidelines applicable by law must be adhered to.

The laser radar of the device complies with IEC 60825-1:2014 for Class 1 laser product safety and does not produce laser radiation that is hazardous to the human body.

DANGER

Read all safety warnings and all instructions. Failure to follow the warnings and instructions may result in electric shock, fire and/or serious injury.

To reduce the risk of fire, electric shock, or injury:

DANGER

- Suffocation hazard. Keep packaging film out of the reach of children.
- Operation in potentially explosive areas is prohibited.
- Do not operate the device in rooms where the air contains flammable gases from petrol, heating oil, paint thinner, solvents, petroleum or spirit (risk of explosion).
- Do not operate the device in rooms with a burning fire or embers in an open fireplace without supervision.
- Do not operate the device in rooms with burning candles without supervision.
- Connect the device only to an AC power supply. The voltage indicated on the type plate must match the mains voltage of the power source.
- For safety reasons we recommend operating the device only via a fault current circuit breaker (maximum 30 mA).
- Never touch the mains plug or outlet when your hands are wet.

WARNING

- Persons with reduced physical, sensory or mental abilities or a lack of ex-

perience and knowledge may only use the device if they are properly supervised or if they have been instructed in the safe use of the device by a person responsible for their safety and if they are familiar with the resulting use of the device and understand the dangers.

- Children from a minimum age of 8 years may operate the device if they are properly supervised or have been instructed in its use by a person responsible for their safety, and if they have understood the resultant hazards involved.
- Supervise children to ensure they do not play with the device.
- Children may only carry out cleaning and user maintenance under supervision.
- The device contains electrical components - do not clean the device under running water.
- Switch off the device and unplug the mains plug before starting any care or maintenance work.
- Do not open the battery pack. Have repairs carried out by qualified personnel only.
- The RCV 3 cleaning robot may only be charged on the charger of a charging station with the part number 9.773-007.0.
- Only connect the device to an electrical connection that has been installed by a qualified electrician in accordance with IEC 60364-1.
- Check that the mains voltage corresponds with the voltage stated on the type plate of the charger.
- Short circuit hazard. Keep conductive objects (e.g. screwdrivers or similar tools) away from the charging contacts.

- Short circuit hazard. Only clean the charging contacts of the charging station dry.
- Charge the device only with the supplied original charger or a charger approved by KÄRCHER.
- Danger of explosion. Do not charge any non-rechargeable battery.
- Only affects RCV 3 devices: Only the cleaning robot model "RCV 3" may be charged.
- Check the power cable for damage each time before operating the device. Do not use a damaged power cable. If the power cable is damaged, replace it with an approved replacement. You can obtain a suitable replacement from KÄRCHER or one of our service partners.

CAUTION

- Have repair work and work on electrical components carried out only by authorized Customer Service personnel.
- Switch off the device and unplug the mains plug before performing cleaning/maintenance.
- Risk of injury when loose fitting clothing, hair or jewelry is caught by moving parts of the device. Keep clothing and jewelry away from moving parts of the machine. Tie long hair back.
- Danger of injury. Never touch the rotating roller brush of the device with fingers or tools during operation.
- Be aware of the risk of tripping due to the cleaning robot moving around.
- Risk of accident and injury. Observe the weight of the unit during transport and storage, see chapter *Technical data* in the operating instructions.
- Safety devices are provided for your own protection. Never modify or bypass safety devices.

ATTENTION

- Do not use scouring agents, glass or multi-purpose cleaner for cleaning.
- Do not operate the device at temperatures below 32 °F (0 °C).
- Use the device indoors only.
- Do not operate the device in rooms that are secured with an alarm system or motion sensor.
- Protect the device from extreme weather conditions, moisture and heat.
- Operate the device only at temperatures between 32 °F (0 °C) to 95 °F (35 °C).
- Damage to the device. Do not stand on the device or place children, objects or pets on it.
- Objects, e.g. on tables or small pieces of furniture, can fall over if the device bumps into the furniture.
- The device can get caught in hanging electric cables, tablecloths, cords, etc. and knock over objects.
- Pick up all cables from the floor before using the device to prevent it from dragging them when cleaning.
- Pick up any fragile or loose objects from the floor, such as vases, to prevent the device from bumping into them and causing damage.
- Do not use the device in an area that is above the floor, e.g. on a sofa.
- Cordon off all areas where there is a risk of falling for the device. E.g. stairways or galleries without barriers.
- Do not use the device on floors with liquids or sticky substances.
- Do not use the device for cleaning high pile carpets.
- Damage to the laser radar (LiDAR). Do not place the device upside down (the housing of the laser radar (Li-

DAR) should never touch the ground or hard surfaces).

- Do not carry the device by the cover of the laser radar (LiDAR).
- Do not use the device to pick up any sharp or large objects, such as glass shards, gravel or toy parts.
- Do not spray any liquids into the device and make sure the dust container is dry before fitting it.
- Store the device fully charged and switched off in a cool and dry place.
- Use the charging station indoors only.
- Do not place the charging station near heat sources, e.g. heaters.
- Store the charging station indoors only, in a cool, dry place.
- Charge the cleaning robot at least once a month to avoid deep discharge of the battery.
- Switch off the charging station before all care and maintenance work.

Note

- Black carpets can have a negative influence on the driving behavior.
- This equipment has been tested and found to comply with the limits for a class B digital device, pursuant to part 15 of the FCC rules.
- These limit values are designed to provide adequate protection against harmful interference in residential areas.
- This equipment generates, uses and can radiate radio frequency electricity. If it is not installed and used in accordance with the instructions, this can cause harmful interference to radio communications.
- However, there is no guarantee that interference will not occur in a particular application.

- If the device causes interference to radio or television reception, which can be determined by turning the device off and on, we recommend that you eliminate the interference by one or more of the following measures:

- Change the orientation or location of the receiving antenna.
- Increase the separation between the equipment and the receiver.
- Connect the equipment into an outlet on a circuit different from that to which the receiver is connected.
- Contact a specialist dealer or an experienced radio / television technician.

- The device must not be co-located or operated in conjunction with any other antenna or transmitter.

- To maintain compliance with the FCC/IC rules, the device must be installed at a minimum distance of 20 cm from nearby persons.

- This device/appliance complies with Part 15 of the FCC Rules and Industry Canada licence-exempt RSS standard(s).

Operation is subject to the following two conditions:

- 1 This device/appliance may not cause harmful interference, and
- 2 This device/appliance must accept any interference received, including interference that may cause undesired operation.

Note

Changes or modifications made to this equipment not expressly approved by Kärcher may void the FCC authorization to operate this equipment.

- This Class B digital apparatus complies with Canadian ICES-003.

SAVE THESE INSTRUCTIONS

Hazard levels

⚠ DANGER

- Indication of an imminent threat of danger that will lead to severe injuries or even death.

⚠ WARNING

- Indication of a potentially dangerous situation that may lead to severe injuries or even death.

⚠ CAUTION

- Indication of a potentially dangerous situation that may lead to minor injuries.

ATTENTION

- Indication of a potentially dangerous situation that may lead to damage to property.

Owner/User Responsibility

The owner and/or user must have an understanding of the manufacturer's operating instructions and warnings before using this device.

Warning information should be emphasized and understood.

If the operator is not fluent in English, the manufacturer's instructions and warnings shall be read to and discussed with the operator in the operator's native language by the purchaser/owner, making sure that the operator comprehends its contents. Owner and/or user must study and maintain for future reference the manufacturer's instructions.

Intended use

The device consists of two units, a charging station and a battery-powered cleaning robot.

- The device is intended for fully automatic cleaning of textile and hard floor coverings indoors. It can be used for autonomous, continuous maintenance cleaning on all common floor coverings.
- This device has been developed for use in private households and is not intended for the load imposed by commercial use.

You will find a QR[®] code to call up the online operating instructions in:



Trademark

QR-Code[®] is a registered trademark of DENSO WAVE INCORPORATED.

Customer Service

Registration

Your device must be registered in order to help with any questions or issues that you have. You can register your device at **www.karcher-register.com** if located in the U.S.A., **www.karcher.ca** if located in Canada, or **www.karcher.com/mx** if located in Mexico.

Warranty

In the case of a warranty claim, you can contact customer support. Please see the contact information listed below for either the USA, Canada or Mexico. You **MUST** provide your proof of purchase in order to file a warranty claim either via e-mail, phone or fax.

USA Customer Service

You can contact our Customer Service department by phone at **1-800-537-4129** or via the website at **www.karcher-help.com**.

Mexico Customer Service

You can contact our Customer Service department by phone at **01-800-024-1313** or via the website at **www.karcher.com/mx**.

Canada Customer Service

You can contact our Customer Service department by phone at **1-800-465-4980** or via the website at **www.karcher.com/ca/support**.

Scope of delivery

The scope of delivery for the appliance is shown on the packaging. During unpacking, check the contents for completeness. If any accessories are missing or in the event of any shipping damage, please notify our Customer Service department as stated above either by phone or via the website.

Accessories and spare parts

Only use original accessories and original spare parts. They ensure that the appliance will run fault-free and safely. Information on accessories and spare parts can be found at **www.karcher.com**.

Technical data

Electrical connection

Nominal power	W	33
Nominal voltage of battery	V	14.8
Battery pack types		Li-ION
Nominal voltage of charger	V	100-240

Nominal current of charger	A	0.6
Battery capacity	mAh	3000
Operating time at normal operation when battery fully charged	min	120
Wireless connections	IEEE 802.11b/g/n 2.4 GHz	
Frequency	MHz	2400-2483.5
Max. signal strength, WLAN	dBm	<20
Capacities of 2-in-1 dust container with water reservoir		
Dry dirt	oz (ml)	10.1 (300)
Liquid	oz (ml)	5.7 (170)
Dust container capacity		
Dry dirt	oz (ml)	16.9 (500)
Cleaning robot dimensions and weights		
Weight	lbs (kg)	8.2 (3.7)
Length x width x height	in (mm)	13.8 (350) x 13.8 (350) x 3.7 (94)
Charging station dimensions and weights		
Weight	lbs (kg)	0.6 (0.27)

Length x width x height	in (mm)	3.1 (80) x 5.9 (150) x 4.1 (102)
-------------------------	---------	----------------------------------

Subject to technical changes without notice.

Environmental protection



The packing materials can be recycled. Please do not throw the packaging into the household waste, but recycle it.

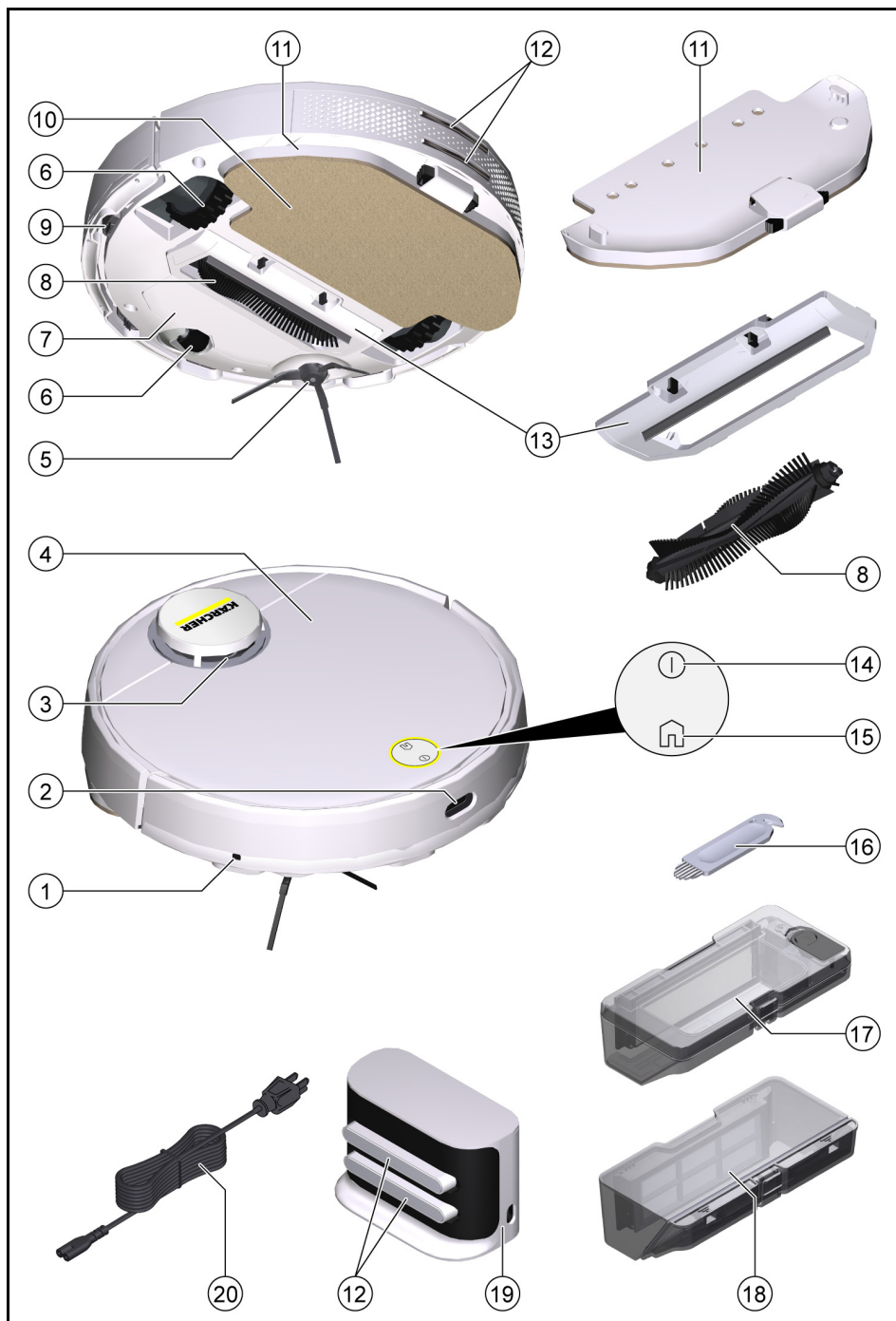
Old devices contain valuable recyclable materials that should be sent for recycling. Batteries and battery packs contain substances that must not be released into the environment. Please dispose of old devices, batteries and battery packs via suitable collection systems.

Observe the legal recommendations when handling lithium-ion batteries. Dispose of used and defective battery packs according to the applicable regulations.

Notes on the content materials (REACH)

Current information on content materials can be found at: www.kaercher.de/REACH

Description of the device



- ① Collision sensor
- ② Infrared sensor
- ③ Laser sensor (LiDAR)
- ④ Top cover
- ⑤ Side brush
- ⑥ Steering roller
- ⑦ Battery compartment
- ⑧ Brush
- ⑨ Fall sensor
- ⑩ Wiper cloth
- ⑪ Wiper cloth holder
- ⑫ Battery terminals
- ⑬ Brush cover
- ⑭ On / Off button
- ⑮ "Back to charging station" button
- ⑯ Cleaning tool
- ⑰ 2-in-1 dust container with water reservoir
- ⑱ Dust container
- ⑲ Charging station
- ⑳ Power cord

Functional description

The device consists of a charging station and a battery-powered cleaning robot.

The mobile cleaning robot obtains its energy from a built-in rechargeable battery. The cleaning robot can clean for up to 120 minutes with a single battery charge. It automatically returns to the charging station to recharge when the battery charge decreases.

The cleaning robot moves systematically. It scans the room with a laser sensor (LiDAR) and then cleans the room step-by-step. It avoids obstacles that are at least as high as the LiDAR tower.

The flat design of the cleaning robot allows it to clean under furniture such as beds, sofas and cupboards.

The cleaning robot has fall sensors that detect stairs and steps and can prevent falls, as well as collision sensors that detect and avoid obstacles.

The battery for the cleaning robot is charged in the charging station. If the cleaning robot starts the cleaning work from the charging station, it returns to the charging station when the battery charge is insufficient. As soon as the charging process is finished, the cleaning robot automatically leaves the charging station and continues the cleaning work. The cleaning robot also returns to the charging station when it has finished cleaning.

Status displays

LED display	Status
Lights blue	Drives autonomously
Flashes blue slowly	Autonomous driving is paused
Flashes blue quickly	WLAN connection mode
Flashes green slowly	Cleaning robot is charging
Lights green	Cleaning robot is fully charged or successfully connected
Flashes red slowly	Battery is too empty to start
Flashes red quickly	Error case

Functions

Sleep mode

The cleaning robot automatically switches to sleep mode after 5 minutes of inactivity. Press any key to wake it up.

- The cleaning robot does not switch to sleep mode when it is on the charging station.
- The cleaning robot turns off automatically if it is in sleep mode for more than 6 hours

Error mode

If the cleaning robot encounters an error during operation, the display flashes red and a signal sounds.

For a solution, see chapter *Troubleshooting guide*.

If no action is taken within 5 minutes, the cleaning robot automatically switches to sleep mode.

"Do not disturb" mode

The "Do not disturb" mode is set by default. In the "Do not disturb" mode, the cleaning robot does not resume an interrupted cleaning, does not perform scheduled cleanings, and does not issue audible warnings.

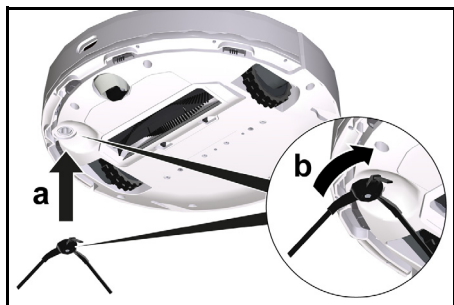
The "Do not disturb" mode can be disabled in the app. Downloading the app is described in the chapter *Connecting the cleaning robot to WLAN and the app*.

Low power consumption mode

- Press and hold the "Back to charging station" button for 10 seconds to activate the low power consumption mode.
- Press and hold the On / Off button for 1 second to deactivate the low power consumption mode.

Initial commissioning

Installing the side brush



1. Turn the cleaning robot over.

Note

To avoid damage, do not place the robot on the laser sensor (LiDAR).

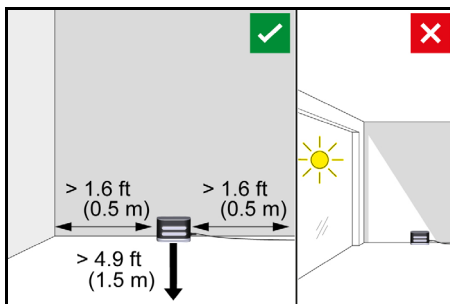
2. Insert the side brush.

Setting up the charging station

⚠ WARNING

The RCV 3 cleaning robot may only be charged on the charger of a charging station with the part number 9.773-007.0.

- Select the location so that the cleaning robot can easily reach the charging station.
 - Ensure a distance of at least 1.6 ft (0.5 m) to the left and right of the charging station and a distance of at least 4.9 ft (1.5 m) in front of the charging station.
 - The location must not be exposed to direct sunlight.
1. Set up the charging station.

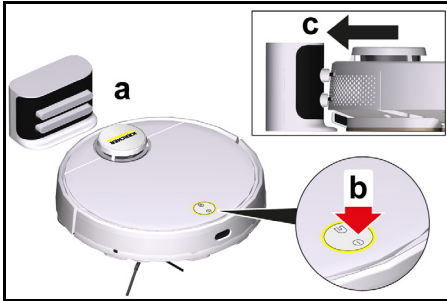


2. Plug the power cord into the cable holder on the side of the charging station.



3. Connect the power cord.

Connecting the cleaning robot to the charging station



1. Place the cleaning robot on the floor in front of the charging station.
2. Press and hold the on/off switch for 3 seconds.
The cleaning robot switches on.
3. As soon as the indicator lights up, manually place the cleaning robot on the charging station and ensure that the charging contacts have good contact.

After the initial start-up, the cleaning robot automatically moves to the charging station.

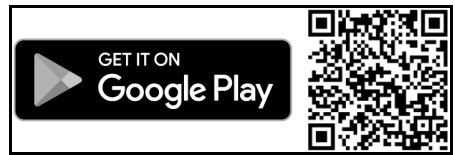
Connecting the cleaning robot to WLAN and the app

The cleaning robot can be controlled directly via buttons on the device or via the app using a WLAN enabled mobile device. To be able to use all the available functions, it is recommended to control the cleaning robot via the Kärcher Home Robots app.

Before you download the app, make sure you have the following:

- The mobile device is connected to the Internet.
- The router's 2.4 GHz WLAN is enabled.
- Sufficient WLAN coverage is guaranteed.

Download the Kärcher Home Robots app from the Apple App Store® or from the Google Play™ Store.



- Google Play™ and Android™ are trademarks or registered trademarks of Google Inc.
- Apple® and App store® are trademarks or registered trademarks of Apple Inc.

The Kärcher Home Robots app offers the following main functions, among others:

- Mapping of the rooms and several floors
- Setting schedules
- Definition of no-go zones and virtual walls
- Notes on errors or malfunctions and the cleaning progress
- Setting cleaning preferences (suction modes)
- Establishment of cleaning zones
- Activation / deactivation of the "Do not disturb" mode
- FAQ with detailed troubleshooting guide
- Contact details for the KÄRCHER Service Centers

Connecting the cleaning robot to the Kärcher Home Robots app and WLAN:

1. Download the Kärcher Home Robots app from the Apple App Store or the Google Play Store.
2. Open the Kärcher Home Robots app.
3. Create an account (if you are not already registered).

4. Add the desired cleaning robot.
5. Follow the step by step instructions of the app.

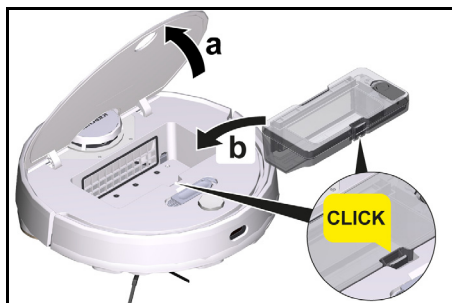
Initial startup

Installing the 2-in-1 dust container with water reservoir

The 2-in-1 dust container with water reservoir may contain a small amount of residual water due to quality control. This is normal.

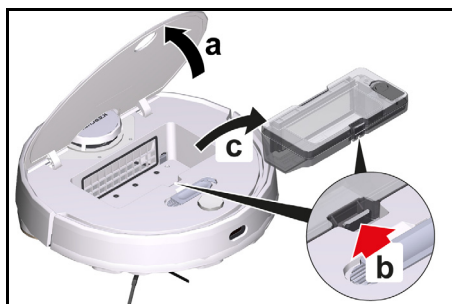
Use the 2-in-1 dust container with water reservoir when you want to clean both dry and wet.

Remove the wiper cloth and wiper cloth holder for dry cleaning, see chapter *Removing the wiper cloth holder with wiper cloth*.



1. Open the cover at the top.
2. Press the 2-in-1 dust container with water reservoir into position until it audibly clicks into place.
3. Close the cover at the top.

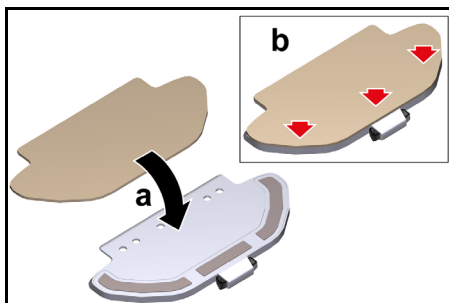
Removing the 2-in-1 dust container with water reservoir



1. Open the cover at the top.
2. Press the clamp.
3. Remove the 2-in-1 dust container with water reservoir.

Installing the wiper cloth holder with wiper cloth

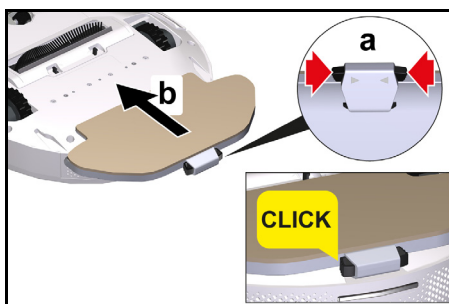
1. Attach the wiper cloth to the wiper cloth holder.



a Press the wiper cloth onto the wiper cloth holder.

b Press on the Velcro tape.

2. Install the wiper cloth holder.

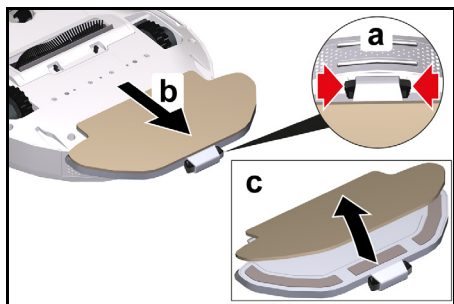


a Press the clamps together.

b Push the wiper cloth holder horizontally into the cleaning robot until it audibly engages.

Removing the wiper cloth holder with wiper cloth

1. Press any key.
The cleaning robot stops.
2. Remove the wiper cloth holder.

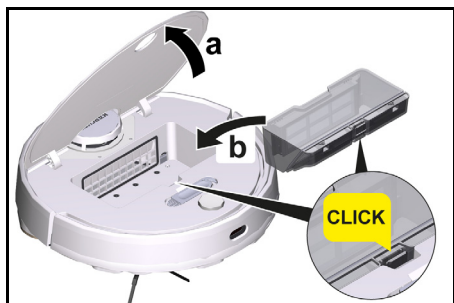


- a Press the clamps together.
- b Remove the wiper cloth holder.
- c Pull the wiper cloth off the wiper cloth holder.

Installing the dust container

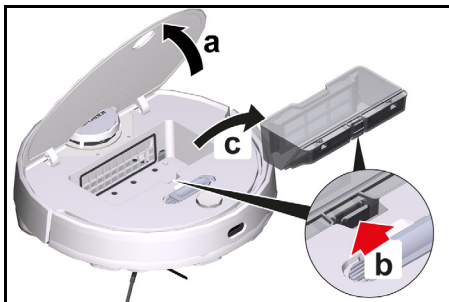
Insert the dust container if you want to clean dry only.

Remove the wiper cloth and wiper cloth holder for dry cleaning, see chapter *Removing the wiper cloth holder with wiper cloth*.



1. Open the cover at the top.
2. Press the dust container into position until it audibly clicks into place.
3. Close the cover at the top.

Removing the dust container



1. Open the cover at the top.
2. Press the clamp.
3. Remove the dust container.

Resetting the WLAN connection

If you switch to a new router or change your WLAN password, you must reset the cleaning robot's WLAN connection.

Note

Only 2.4 GHz WLAN networks are supported.

1. Switch on the cleaning robot, see chapter *Switching on the cleaning robot*.
2. Press the On / Off button and the "Return to charging station" button simultaneously for 7 seconds until a voice says: "Resetting the WLAN connection and entering the network configuration mode".
3. Connect the cleaning robot to the charging station, see chapter *Connecting the cleaning robot to the charging station*.

Restoring the factory settings

1. Press and hold the "Back to charging station" button for 5 seconds until a signal sounds.
2. Press and hold the "Return to charging station" button again for 5 seconds until a signal sounds. The factory settings are restored.

Setting up cleaning zones

The cleaning robot cleans only within the selected area.

Cleaning zones can only be set up with the app. Downloading the app is described in the chapter *Connecting the cleaning robot to WLAN and the app*.

- Follow the step by step instructions of the app.

Setting up virtual walls

Virtual walls and restricted areas prevent the cleaning robot from entering areas that should not be cleaned.

Virtual walls can only be set up with the app. Downloading the app is described in the chapter *Connecting the cleaning robot to WLAN and the app*.

- Follow the step by step instructions of the app.

Activating mapping

The cleaning robot starts from the charging station and automatically updates its map after completing a cleaning task and after charging.

Mapping can only be set up with the app. Downloading the app is described in the chapter *Connecting the cleaning robot to WLAN and the app*.

Note

To avoid losing the map, wait a few seconds after the first mapping until the map is saved.

- Follow the step by step instructions of the app.

Operation

ATTENTION

Damage due to moisture

Remove the wiper cloth with the wiper cloth holder before charging and when not in use, see chapter *Removing the wiper cloth holder with wiper cloth*.

Remove the 2-in-1 dust container with water reservoir before charging and when not in use, see chapter *Removing the 2-in-1 dust container with water reservoir*.

Protect carpets with virtual walls, see chapter *Setting up virtual walls*.

Switching on the cleaning robot

Note

Place the cleaning robot directly on the charging station if it cannot be switched on due to a low charge level, see chapter *Initial commissioning*.

1. Keep the On / Off button pressed when the cleaning robot is in standby and not on the charging station. The signal light flashes for approx. 15 seconds while the cleaning robot starts up and then lights up continuously. The cleaning robot emits an acoustic signal after the start-up is completed.
2. Place the cleaning robot directly on the charging station.
3. Press the On / Off button. During initial start-up, the cleaning robot starts mapping. In operation, the cleaning robot starts cleaning.

Setting the cleaning modes

Cleaning modes can only be set up with the app. Downloading the app is described in the chapter *Connecting the cleaning robot to WLAN and the app*.

The following cleaning modes are available:

- Dry cleaning
- Combo cleaning
- Wet cleaning

In each of the cleaning modes, the suction performance and the amount of water can be adjusted.

Suction performance:

- Quiet
- Standard
- Medium
- Turbo

Water quantity:

- Low
- Medium
- High

Switching off the cleaning robot

Note

The cleaning robot cannot be switched off when it is on the charging station.

Note

Fully charge the cleaning robot before longer work stoppages.

ATTENTION

Damage due to moisture

Remove the wiper cloth with the wiper cloth holder, see chapter *Removing the wiper cloth holder with wiper cloth*.

Remove the 2-in-1 dust container with water reservoir, see chapter *Removing the 2-in-1 dust container with water reservoir*.

1. Keep the On / Off button pressed when the cleaning robot is in stand-by and not on the charging station. The cleaning robot switches off.

Interrupting the cleaning

1. Press any key during cleaning. The cleaning robot stops.
2. Press the On / Off button. The cleaning process continues.
3. Press the "Back to charging station" key. Cleaning is canceled and the cleaning robot returns to the charging station.

Manually send the cleaning robot for recharging

1. If the cleaning robot is moving, press any key. The cleaning robot stops.
2. Press the "Back to charging station" key. The cleaning robot moves to the charging station for recharging. The cleaning robot automatically returns to the charging station for recharging when it has completed a cleaning task or when it is low on energy during a cleaning operation.

Dry wiping

1. If necessary, empty the dust container, see chapter *Emptying the 2-in-1 dust container with water reservoir*.
2. Insert the dry wiper cloth into the wiper cloth holder, see chapter *Installing the wiper cloth holder with wiper cloth*.
3. Press the On / Off button. The cleaning robot starts cleaning.

Wet wiping

Note

After emptying the water reservoir, drops may remain in the hoses. If the cleaning robot is started with an empty water reservoir, these drops can be discharged.

ATTENTION

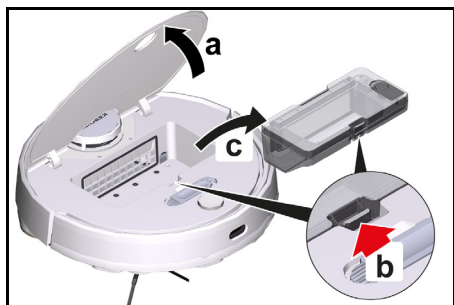
Damage to the 2-in1 dust container due to corrosion and chemical ingredients

Do not fill cleaning agents, disinfectants or other cleaning products into the 2-in-1 dust container.

Do not pour hot water into the 2-in-1 dust container.

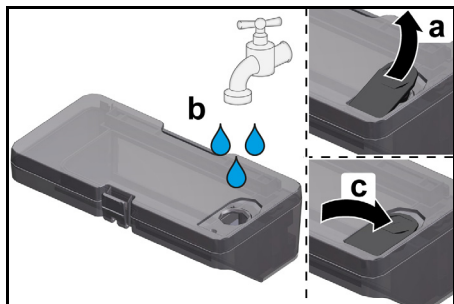
Do not immerse the 2-in-1 dust container in water.

1. Press any key.
The cleaning robot stops.
2. Remove the 2-in-1 dust container with water reservoir.



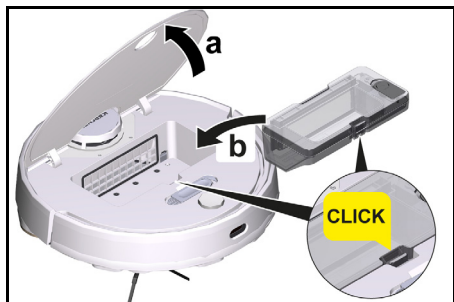
- a Open the cover at the top.
- b Press the clamp.
- c Remove the 2-in-1 dust container with water reservoir.

3. Refill water.



- a Pull up the rubber tab.
- b Fill with water.
- c Press the rubber tab down.

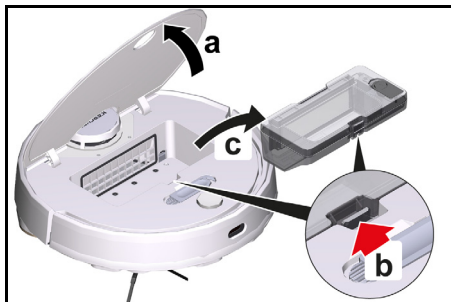
4. Install the 2-in-1 dust container with water reservoir.



- a Press the 2-in-1 dust container with water reservoir into position until it audibly clicks into place.
 - b Close the cover at the top.
5. Dampen the wiper cloth under running water and wring out to remove excess water.
 6. Install the wiper cloth, see chapter *Removing the wiper cloth holder with wiper cloth*.
 7. Press the On / Off button.
The cleaning robot starts cleaning.

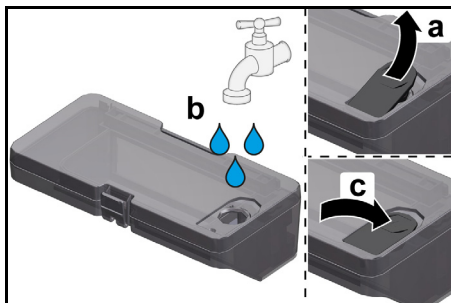
Refilling water

1. Press any key.
The cleaning robot stops.
2. Remove the 2-in-1 dust container with water reservoir.



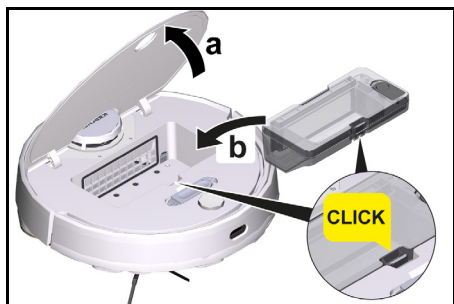
- a Open the cover at the top.
- b Press the clamp.
- c Remove the 2-in-1 dust container with water reservoir.

3. Refill water.



- a Pull up the rubber tab.
- b Fill with water.
- c Press the rubber tab down.

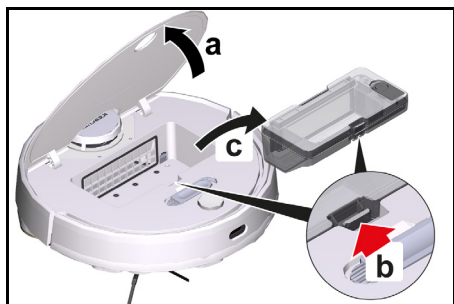
4. Install the 2-in-1 dust container with water reservoir.



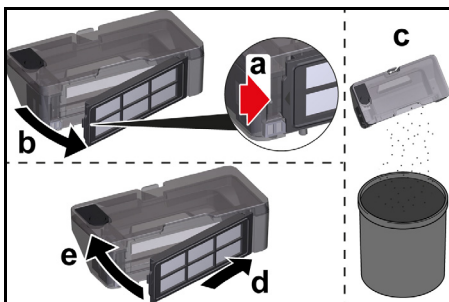
- a Press the 2-in-1 dust container with water reservoir into position until it audibly clicks into place.
 - b Close the cover at the top.
5. Press the On / Off button.
The cleaning process continues.

Emptying the 2-in-1 dust container with water reservoir

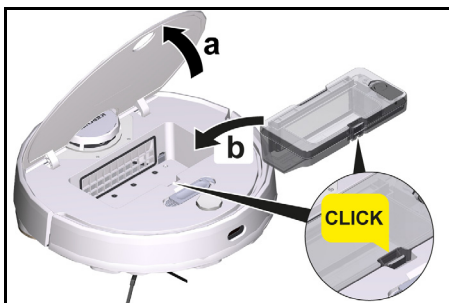
1. Press any key.
The cleaning robot stops.
2. Remove the 2-in-1 dust container with water reservoir.



- a Open the cover at the top.
 - b Press the clamp.
 - c Remove the 2-in-1 dust container with water reservoir.
3. Empty the 2-in-1 dust container with water reservoir.



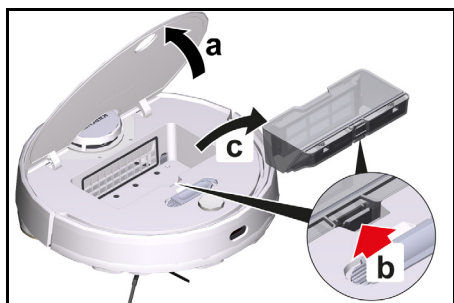
- a Open the filter flap.
 - b Remove the filter flap.
 - c Empty the 2-in-1 dust container with water reservoir.
 - d Insert the filter flap.
 - e Close the filter flap.
4. Install the 2-in-1 dust container with water reservoir.



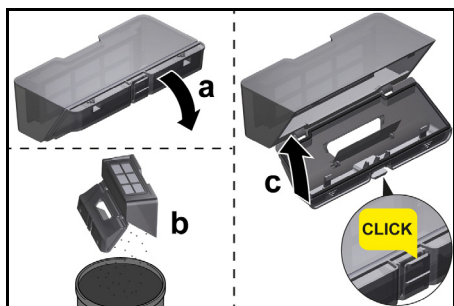
- a Press the 2-in-1 dust container with water reservoir into position until it audibly clicks into place.
 - b Close the cover at the top.
5. Press the On / Off button.
The cleaning process continues.

Emptying the dust container

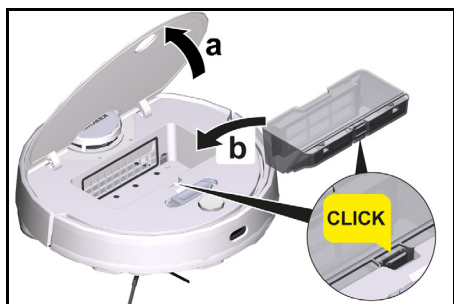
1. Press any key.
The cleaning robot stops.
2. Remove the dust container.



- a Open the cover at the top.
 - b Press the clamp.
 - c Remove the dust container.
3. Empty the dust container.



- a Fold the flap down.
 - b Empty the dust container.
 - c Fold the flap upwards until it audibly engages.
4. Install the dust container.

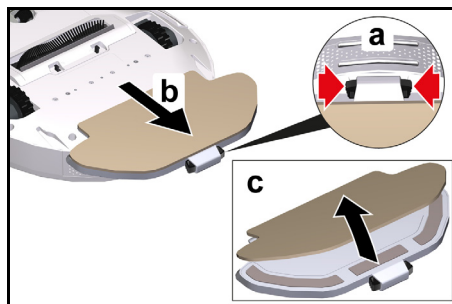


- a Press the dust container into position until it audibly clicks into place.
 - b Close the cover at the top.
5. Press the On / Off button.
The cleaning process continues.

Cleaning the wiper cloth

The wiper cloth can be cleaned during a cleaning process.

1. Press any key.
The cleaning robot stops.
2. Remove the wiper cloth holder.



- a Press the clamps together.
 - b Remove the wiper cloth holder.
 - c Pull the wiper cloth off the wiper cloth holder.
3. Clean the wiper cloth.
 4. Install the wiper cloth, see chapter *Installing the wiper cloth holder with wiper cloth*.
 5. Press the On / Off button.
The cleaning process continues.

Transport

If possible, only transport or return the device in its original packaging. If the original packaging is not available, please contact our service.

Safety instructions for transport

The lithium-ion battery is subject to the requirements of dangerous goods regulations.

An undamaged and functional battery can be transported by the user in public traffic areas without any further requirements.

When shipping via third parties (transport companies), observe the special requirements for packaging and labeling.

Observe the national regulations.

Storage

ATTENTION

Damage to the cleaning robot due to incorrect storage

Do not store the cleaning robot upside down. The housing of the laser radar (LiDAR) should never come into contact with the ground or objects.

Do not place any objects on the cleaning robot.

Store the cleaning robot fully charged and switched off in a cool and dry place.

Note

To avoid deep discharge of the battery, fully recharge the cleaning robot after 5 months at the latest.

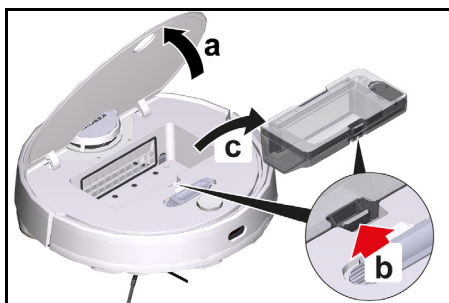
1. Clean the cleaning robot, see chapter *Cleaning*.
2. Fully charge the cleaning robot, see chapter *Manually send the cleaning robot for recharging*.
3. Unplug the charger from the power outlet and the station.
4. Switch off the cleaning robot, see chapter *Switching off the cleaning robot*.
5. Store the cleaning robot in a cool and dry place.

Care and service

Cleaning

Cleaning the 2-in-1 dust container

1. Press any key.
The cleaning robot stops.
2. Remove the 2-in-1 dust container.

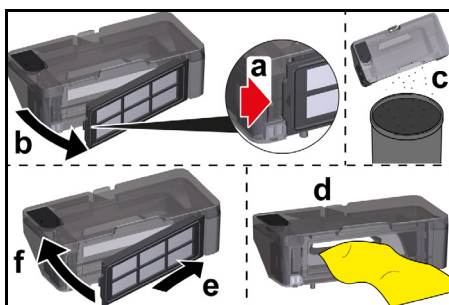


a Open the cover at the top.

b Press the clamp.

c Remove the 2-in-1 dust container.

3. Clean the 2-in-1 dust container with water reservoir.



a Open the filter flap.

b Remove the filter flap.

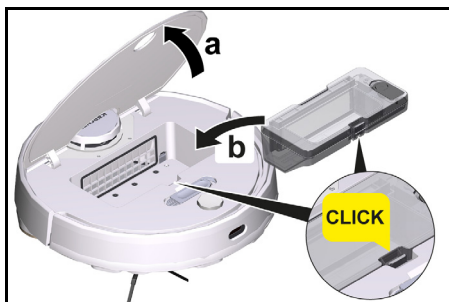
c Empty the 2-in-1 dust container with water reservoir.

d Clean the 2-in-1 dust container with water reservoir.

e Insert the filter flap.

f Close the filter flap.

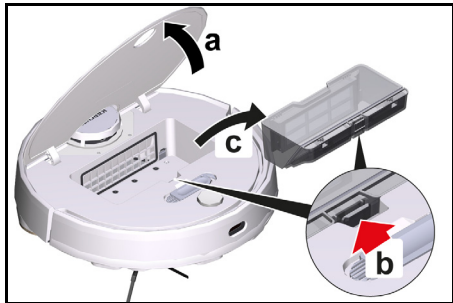
4. Install the 2-in-1 dust container.



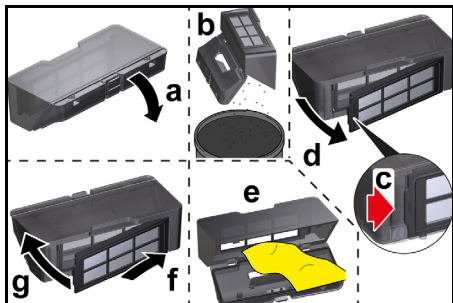
- a Press the 2-in-1 dust container into position until it audibly clicks into place.
- b Close the cover at the top.
5. Press the On / Off button.
The cleaning process continues.

Cleaning the dust container

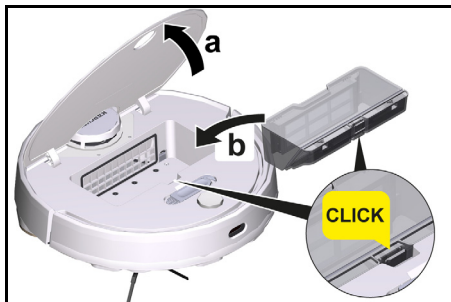
1. Press any key.
The cleaning robot stops.
2. Remove the dust container.



- a Open the cover at the top.
- b Press the clamp.
- c Remove the dust container.
3. Clean the dust container.



- a Fold the flap down.
- b Empty the dust container.
- c Open the filter flap.
- d Remove the filter flap.
- e Clean the dust container.
- f Insert the filter flap.
- g Close the filter flap.
- h Fold the flap upwards until it audibly engages.
4. Install the dust container.

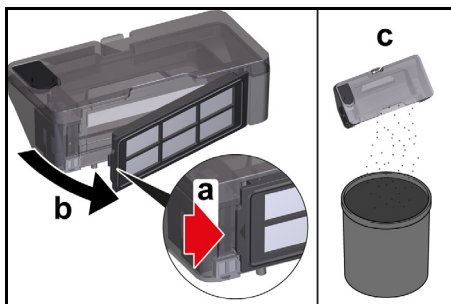


- a Press the dust container into position until it audibly clicks into place.
- b Close the cover at the top.
5. Press the On / Off button.
The cleaning process continues.

Cleaning the filter

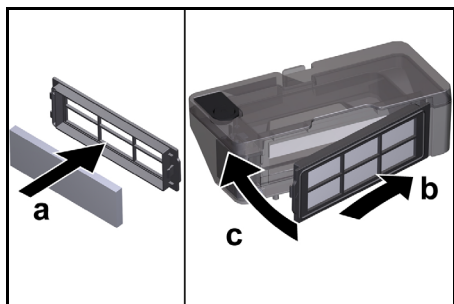
We recommend cleaning the filter regularly. This prevents it from becoming clogged.

1. Press any key.
The cleaning robot stops.
2. Remove the 2-in-1 dust container with water reservoir or the dust container, see chapter *Removing the 2-in-1 dust container with water reservoir* or *Removing the dust container*.
3. Remove the filter.



- a Open the filter flap.
- b Remove the filter flap.
- c Empty the 2-in-1 dust container with water reservoir or the dust container.
4. Clean the filter under running water using the cleaning tool provided.

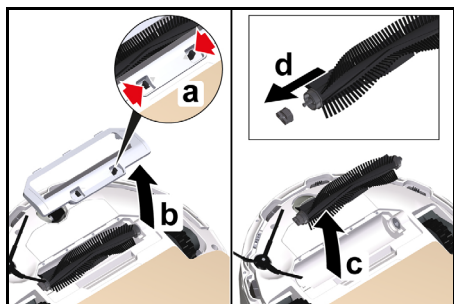
5. Allow the filter to dry completely.
6. Install the filter.



- a Insert the filter.
 - b Insert the filter flap.
 - c Close the filter flap.
7. Install the 2-in-1 dust container with water reservoir or the dust container, see chapter *Installing the 2-in-1 dust container with water reservoir* or *Installing the dust container*.
 8. Press the On / Off button.
The cleaning process continues.

Cleaning the brush

1. Remove the brush.



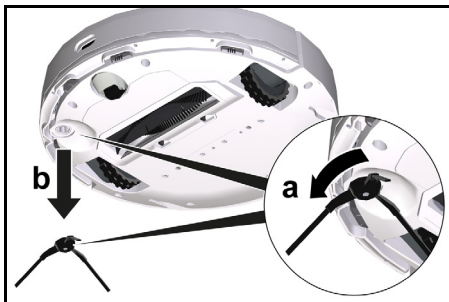
- a Press the clamps together.
 - b Remove the brush cover.
 - c Remove the brush.
 - d Remove the brush bearing.
2. Clean the brush and brush bearings with the supplied cleaning tool.
 3. Install the brush.



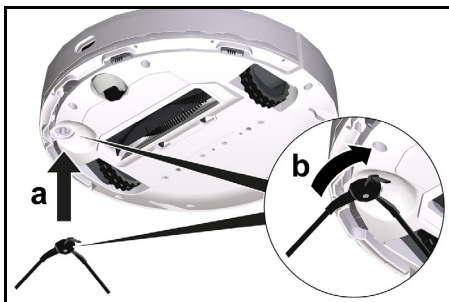
- a Fit the brush bearing.
- b Insert the brush.
- c Put on the brush cover and press it down until it audibly clicks into place.

Cleaning the side brush

1. Remove the side brush.

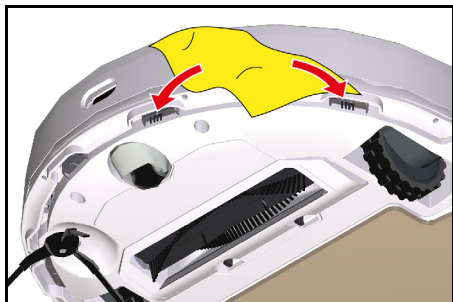


2. Clean the side brush.
3. Install the side brush.



Cleaning the fall sensors

Clean the fall sensors monthly.



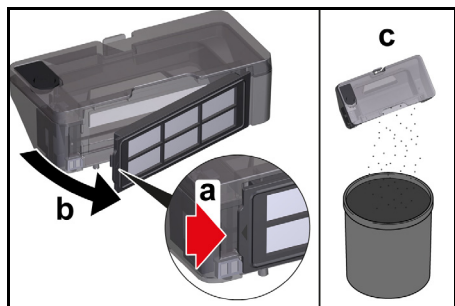
1. Wipe the fall sensors with a soft cloth.

Replace

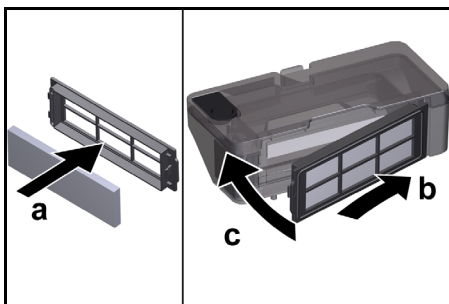
Replacing the filter

We recommend replacing the filter after 3 to 6 months.

1. Press any key.
The cleaning robot stops.
2. Remove the 2-in-1 dust container with water reservoir or the dust container, see chapter *Removing the 2-in-1 dust container with water reservoir* or *Removing the dust container*.
3. Remove the filter.



- a Open the filter flap.
 - b Remove the filter flap.
 - c Remove the filter.
4. Install the new filter.

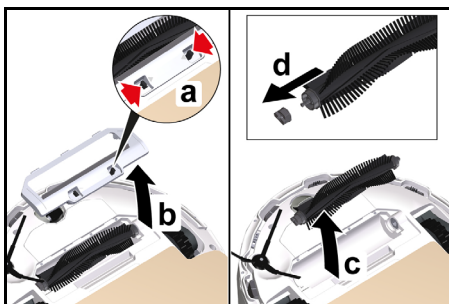


- a Insert the filter.
 - b Insert the filter flap.
 - c Close the filter flap.
5. Install the 2-in-1 dust container with water reservoir or the dust container, see chapter *Installing the 2-in-1 dust container with water reservoir* or *Installing the dust container*.
 6. Press the On / Off button.
The cleaning process continues.

Replacing the brush

We recommend replacing the brush after 6 to 12 months.

1. Remove the brush.



- a Press the clamps together.
 - b Remove the brush cover.
 - c Remove the brush.
 - d Remove the brush bearing.
2. Install the new brush.



- a Fit the brush bearing.
- b Fit the brush.
- c Fit the brush cover and press it down until it audibly latches into place.

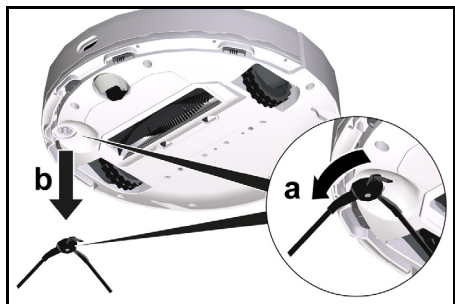
Replacing the side brush

We recommend replacing the side brush after 3 to 6 months.

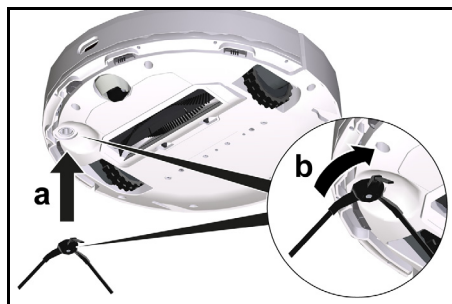
Note

To avoid damage, do not place the robot on the laser sensor (LiDAR).

1. Turn the cleaning robot over.
2. Remove the side brush.



3. Install the new side brush.



Replacing the battery

The battery has reached the end of its service life if the cleaning robot constantly travels to the station for charging after a short cleaning operation.

1. Switch off the cleaning robot, see chapter *Switching off the cleaning robot*.
2. Send the cleaning robot to Customer Service. Observe the regulations for shipping lithium-ion batteries, see chapter *Transport*.

Troubleshooting guide

Malfunctions often have simple causes that you can remedy yourself using the following overview. When in doubt, or in the case of malfunctions not mentioned here, please contact your authorized Customer Service.

Error	Cause	Rectification
Battery does not charge	Charging contacts dirty.	1. Wipe the charging contacts on both the charging station and the cleaning robot with a dry cloth.
	Ambient temperature is below 32 °F (0 °C) or above 95 °F (35 °C).	1. Use the cleaning robot at temperatures above 32 °F (0 °C) and below 95 °F (35 °C).
The cleaning robot does not return to the charging station	The battery is discharged.	1. Manually place the cleaning robot on the charging station and allow it to fully charge.
	The cleaning robot is too far away from the charging station.	1. Move the cleaning robot closer to the charging station. 2. Manually place the cleaning robot on the charging station.
	There is too little space around the charging station.	1. Ensure that there is sufficient space around the charging station, see chapter <i>Setting up the charging station</i> .
	There are too many obstacles around the charging station.	1. Place the charging station in a more open area, see chapter.
	The cleaning robot remaps its environment when it has been moved over a large distance.	1. Manually place the cleaning robot on the charging station.
	The cleaning robot was not started from the charging station. In this case, it only returns to the place from which it was started.	1. Manually place the cleaning robot on the charging station.
The cleaning robot makes unusual sounds	A foreign object could be caught in the brush, the side brush or in a wheel.	1. Switch off the cleaning robot. 2. Remove the foreign object.
The cleaning robot does not resume cleaning	The cleaning robot is in "Do not disturb" mode.	1. Ensure that the cleaning robot is not in "Do not disturb" mode.
	The cleaning robot is charged manually or has been placed in the charging station.	1. Wait until the cleaning robot is fully charged.

Error	Cause	Rectification
The cleaning robot does not start	Ambient temperature is below 32 °F (0 °C) or above 95 °F (35 °C).	1. Use the cleaning robot at temperatures above 32 °F (0 °C) and below 95 °F (35 °C).
	Charging state is too low.	1. Charge the cleaning robot.
	Laser distance sensor (LiDAR) is blocked.	1. Clean the laser distance sensor with a dry cloth. 2. Remove obstacles blocking the laser distance sensor. 3. Move the cleaning robot to another location and start it.
	Collision sensor is dirty or too close to the virtual wall.	1. Remove foreign objects by carefully tapping on the collision sensor. 2. Move the cleaning robot to another location and start it.
	Fall sensors are dirty.	1. Clean the fall sensors with a dry cloth.
	2-in-1 dust container with water reservoir or dust container is not installed or incorrectly installed.	1. Make sure that the 2-in-1 dust container with water reservoir or the dust container is installed and correctly latched into place, see chapter <i>Installing the 2-in-1 dust container with water reservoir</i> . <i>Installing the dust container</i>
	Filter not installed or incorrectly installed.	1. Make sure that the filter is correctly installed.
	Filter dirty.	1. Clean the filter, see chapter <i>Cleaning the filter</i> . 2. If the error persists, replace the filter, see chapter <i>Replacing the filter</i> .
	Wiper cloth or wiper cloth holder not or incorrectly installed.	1. Ensure that the wiper cloth holder and wiper cloth are correctly installed, see chapter <i>Installing the wiper cloth holder with wiper cloth</i> .
	The cleaning robot is jammed or stuck.	1. Remove obstacles.
	The cleaning robot or one of its wheels has no floor contact.	1. Place the cleaning robot on a flat surface.

Error	Cause	Rectification
The cleaning robot does not clean efficiently or leaves dust behind	The 2-in-1 dust container with water reservoir or the dust container is full.	1. Empty the 2-in-1 dust container with water reservoir or the dust container, see chapter <i>Emptying the 2-in-1 dust container with water reservoir</i> or. <i>Emptying the dust container</i>
	The filter is clogged.	1. Clean the filter, see chapter <i>Cleaning the filter</i>
	A foreign object has become caught in the brush	1. Clean the brush, see chapter <i>Cleaning the brush</i> . 2. Clean the side brush, see chapter <i>Cleaning the side brush</i> .
The cleaning robot cannot connect to WLAN / The cleaning robot goes offline	The cleaning robot is not connected to the network or is not within range of the WLAN signal.	1. Ensure that the cleaning robot is connected to the network and is within range of the WLAN signal. 2. Make sure the WLAN password is correct. 3. Reset the WLAN and connect again (5 GHz WLAN networks are not supported).
	The WLAN signal is too weak.	1. Ensure that the cleaning robot is within range of the WLAN signal.

Disposal



WARNING

This device contains Lithium-Ion rechargeable batteries. The Lithium-Ion batteries must be removed and disposed of in accordance with the applicable federal and state regulations.

Please note the following RBRC™ SEAL information.



THE RBRC SEAL™

The RBRC seal™ (Rechargeable Battery Recycling Corporation) seal on the Li-Ion battery (or battery pack) indicates that KÄRCHER has already paid

the costs for recycling the battery (or battery pack) at the end of its service life. In collaboration with KÄRCHER and other battery manufacturers, the RBRC™ has established a program in the USA making it easier to collect used Li-Ion batteries. Help to protect our environment and preserve our natural resources by bringing the used battery to an authorized KÄRCHER Service Center or your local recycling company. RBRC™ is a registered trademark of the Rechargeable Battery Recycling Corporation.

- Remove the rechargeable battery from the device before disposal.
- Do not throw the battery into a fire or into water.

- The device can be recycled because KÄRCHER devices are made of high-quality recyclable materials.
- The batteries must be recycled or disposed of in accordance with the local laws and regulations.



THANK YOU!

MERCI! ¡GRACIAS!



Register your product and benefit from many advantages.

Enregistrer votre produit et bénéficier de nombreux avantages.

Registre su producto y aproveche de muchas ventajas.

www.kaercher.com/welcome



Rate your product and tell us your opinion.

Évaluer votre produit et donner votre opinion.

Reseñe su producto y díganos su opinión.

Karcher North America Inc.,
6398 N. Karcher Way
Aurora, CO 80019
Tel: 1-800-537-4129

Kärcher Canada Inc.,
275 Pendant Drive, Mississauga,
Ontario L5T 2SW9
Tel: +1-800-465-4980

Karcher México S.A. de C.V.,
Circuito Poetas 68.
Col Ciudad Satélite, Naucalpan de Juárez,
Estado de México C.P. 53100, México
Tel: +52-55-2629-4900

www.kaercher.com/service

