

Test Laboratory: UL CCS SAR Lab C

CDMA BC0

Communication System: CDMA2000; Frequency: 824.7 MHz; Duty Cycle: 1:1

Phantom section: RF Section

DASY4 Configuration:

- Probe: ER3DV6 - SN2339; ConvF(1, 1, 1); Calibrated: 1/20/2012

- Sensor-Surface: (Fix Surface)

- Electronics: DAE4 Sn1257; Calibrated: 10/25/2011

- Phantom: HAC Test Arch with AMCC; Type: SD HAC P01 BB

- Measurement SW: DASY52, Version 52.8 (0); SEMCAD X Version 14.4.5 (3634)

E-Field, RC3 SO55/L ch/Hearing Aid Compatibility Test (101x101x1): Measurement grid:

dx=5mm, dy=5mm

Maximum value of peak Total field = 80.936 V/m

Probe Modulation Factor = 0.950

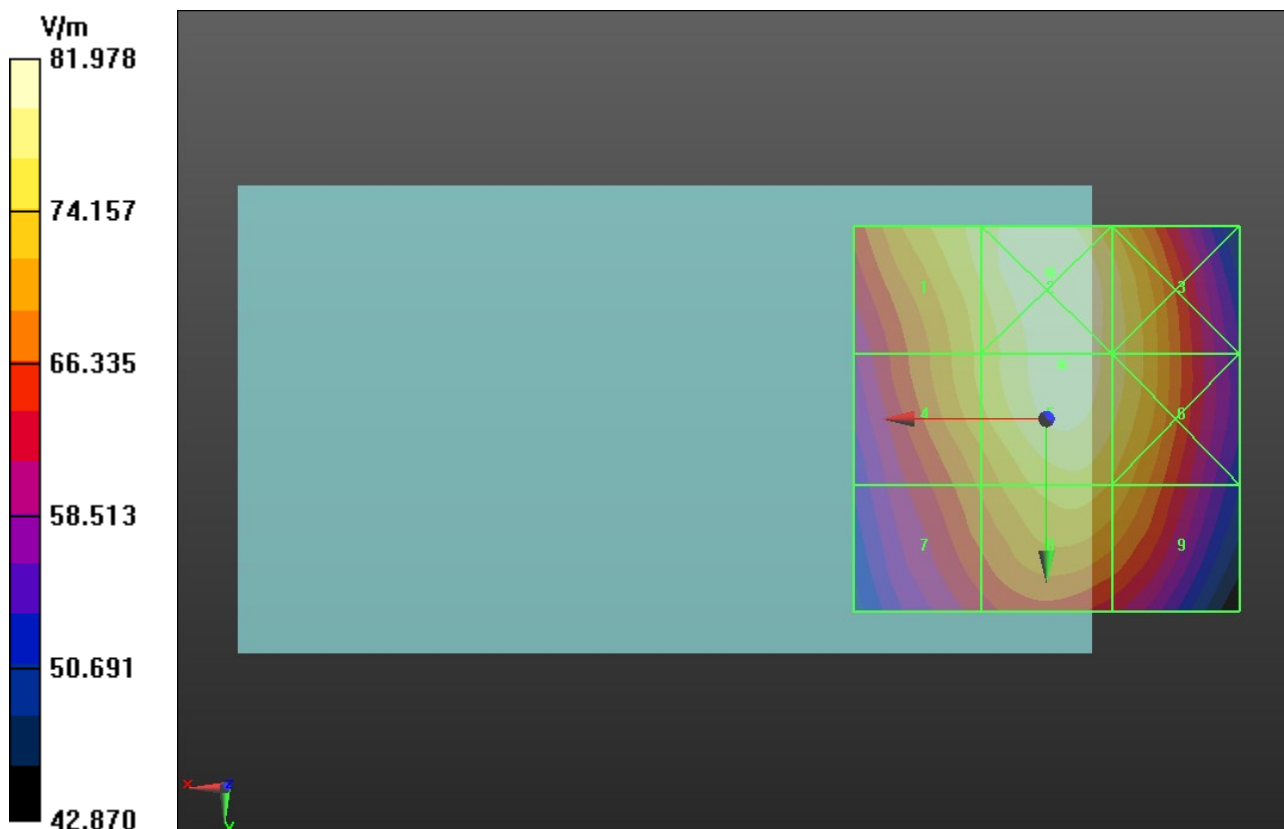
Device Reference Point: 0, 0, -6.3 mm

Reference Value = 107.1 V/m; Power Drift = -0.04 dB

Hearing Aid Near-Field Category: M4 (AWF 0 dB)

Peak E-field in V/m

Grid 1 77.949 M4	Grid 2 81.978 M4	Grid 3 78.545 M4
Grid 4 74.939 M4	Grid 5 80.936 M4	Grid 6 78.477 M4
Grid 7 69.522 M4	Grid 8 75.841 M4	Grid 9 73.859 M4



Test Laboratory: UL CCS SAR Lab C

CDMA BC0

Communication System: CDMA2000; Frequency: 836.52 MHz; Duty Cycle: 1:1

Phantom section: RF Section

DASY4 Configuration:

- Probe: ER3DV6 - SN2339; ConvF(1, 1, 1); Calibrated: 1/20/2012
- Sensor-Surface: (Fix Surface)
- Electronics: DAE4 Sn1257; Calibrated: 10/25/2011
- Phantom: HAC Test Arch with AMCC; Type: SD HAC P01 BB
- Measurement SW: DASY52, Version 52.8 (0); SEMCAD X Version 14.4.5 (3634)

E-Field, RC3 SO55/M ch/Hearing Aid Compatibility Test (101x101x1): Measurement grid:

dx=5mm, dy=5mm

Maximum value of peak Total field = 75.893 V/m

Probe Modulation Factor = 0.950

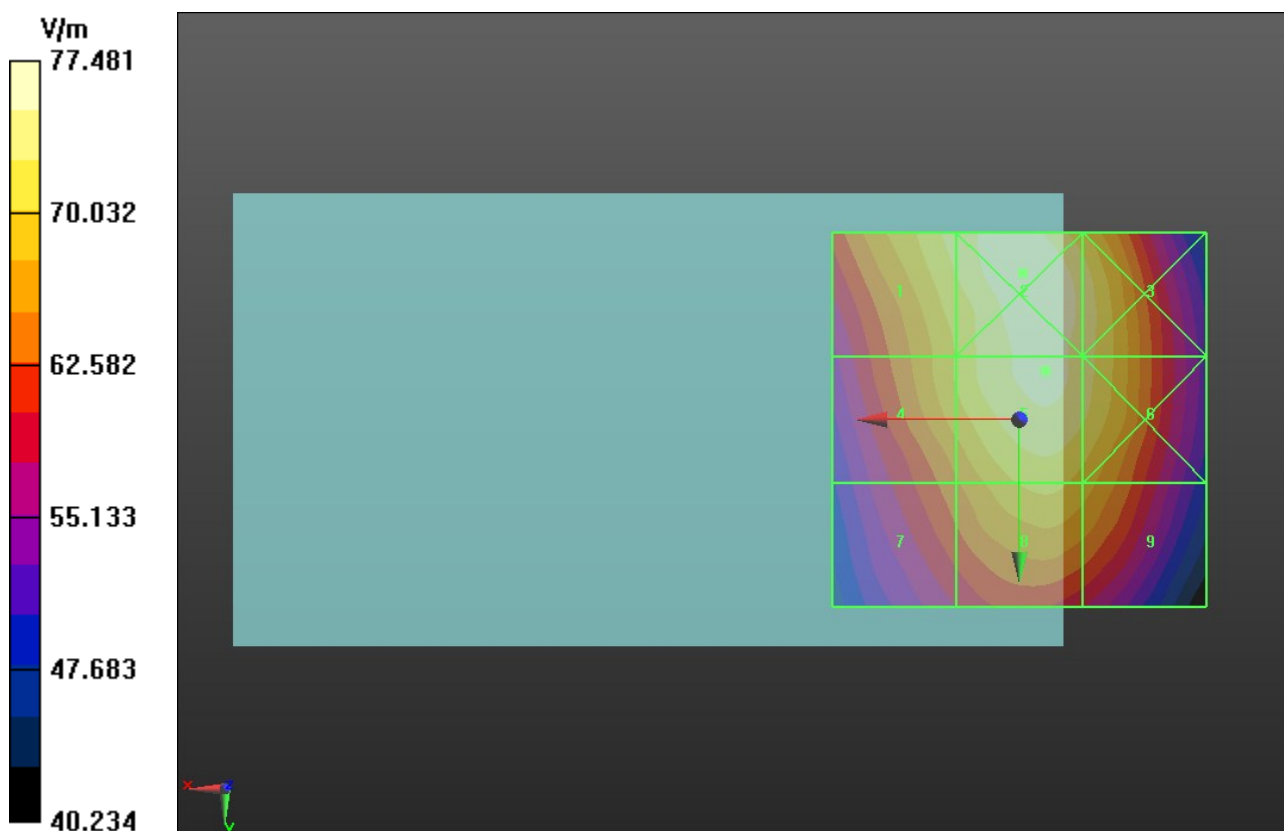
Device Reference Point: 0, 0, -6.3 mm

Reference Value = 99.350 V/m; Power Drift = 0.01 dB

Hearing Aid Near-Field Category: M4 (AWF 0 dB)

Peak E-field in V/m

Grid 1 73.633 M4	Grid 2 77.481 M4	Grid 3 74.354 M4
Grid 4 70.313 M4	Grid 5 75.893 M4	Grid 6 73.889 M4
Grid 7 64.625 M4	Grid 8 70.816 M4	Grid 9 68.916 M4



Test Laboratory: UL CCS SAR Lab C

CDMA BC0

Communication System: CDMA2000; Frequency: 848.31 MHz; Duty Cycle: 1:1

Phantom section: RF Section

DASY4 Configuration:

- Probe: ER3DV6 - SN2339; ConvF(1, 1, 1); Calibrated: 1/20/2012

- Sensor-Surface: (Fix Surface)

- Electronics: DAE4 Sn1257; Calibrated: 10/25/2011

- Phantom: HAC Test Arch with AMCC; Type: SD HAC P01 BB

- Measurement SW: DASY52, Version 52.8 (0); SEMCAD X Version 14.4.5 (3634)

E-Field, RC3 SO55/H ch/Hearing Aid Compatibility Test (101x101x1): Measurement grid:

dx=5mm, dy=5mm

Maximum value of peak Total field = 65.973 V/m

Probe Modulation Factor = 0.950

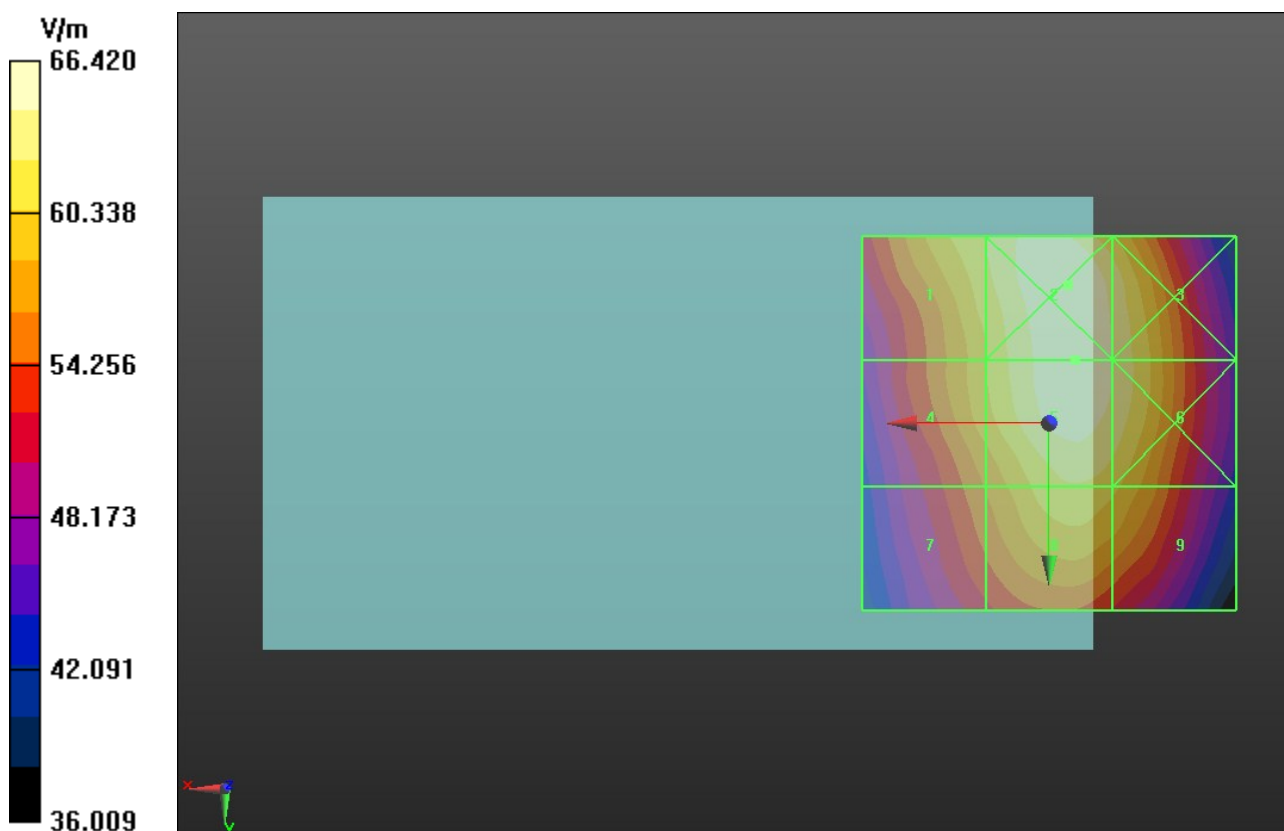
Device Reference Point: 0, 0, -6.3 mm

Reference Value = 86.448 V/m; Power Drift = -0.02 dB

Hearing Aid Near-Field Category: M4 (AWF 0 dB)

Peak E-field in V/m

Grid 1 62.460 M4	Grid 2 66.420 M4	Grid 3 64.396 M4
Grid 4 60.215 M4	Grid 5 65.973 M4	Grid 6 64.424 M4
Grid 7 56.477 M4	Grid 8 62.175 M4	Grid 9 60.875 M4



Test Laboratory: UL CCS SAR Lab C

CDMA BC1

Communication System: CDMA2000; Frequency: 1851.25 MHz; Duty Cycle: 1:1

Phantom section: RF Section

DASY4 Configuration:

- Probe: ER3DV6 - SN2339; ConvF(1, 1, 1); Calibrated: 1/20/2012

- Sensor-Surface: (Fix Surface)

- Electronics: DAE4 Sn1257; Calibrated: 10/25/2011

- Phantom: HAC Test Arch with AMCC; Type: SD HAC P01 BB

- Measurement SW: DASY52, Version 52.8 (0); SEMCAD X Version 14.4.5 (3634)

E-Field, RC3 SO55/L ch/Hearing Aid Compatibility Test (101x101x1): Measurement grid:

dx=5mm, dy=5mm

Maximum value of peak Total field = 30.391 V/m

Probe Modulation Factor = 0.950

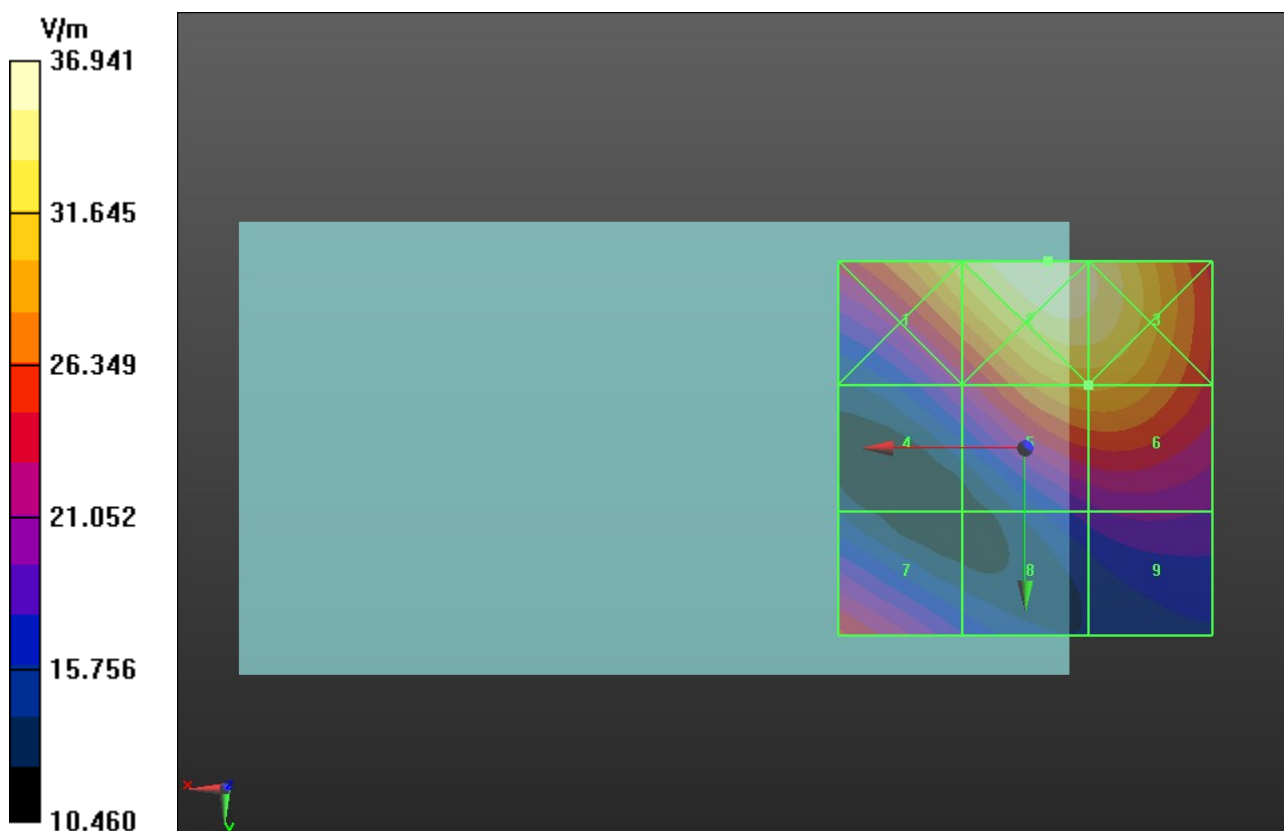
Device Reference Point: 0, 0, -6.3 mm

Reference Value = 27.085 V/m; Power Drift = -0.10 dB

Hearing Aid Near-Field Category: M4 (AWF 0 dB)

Peak E-field in V/m

Grid 1 32.997 M4	Grid 2 36.941 M4	Grid 3 35.704 M4
Grid 4 21.674 M4	Grid 5 30.391 M4	Grid 6 30.391 M4
Grid 7 25.168 M4	Grid 8 18.642 M4	Grid 9 19.887 M4



Test Laboratory: UL CCS SAR Lab C

CDMA BC1

Communication System: CDMA2000; Frequency: 1880 MHz; Duty Cycle: 1:1

Phantom section: RF Section

DASY4 Configuration:

- Probe: ER3DV6 - SN2339; ConvF(1, 1, 1); Calibrated: 1/20/2012

- Sensor-Surface: (Fix Surface)

- Electronics: DAE4 Sn1257; Calibrated: 10/25/2011

- Phantom: HAC Test Arch with AMCC; Type: SD HAC P01 BB

- Measurement SW: DASY52, Version 52.8 (0); SEMCAD X Version 14.4.5 (3634)

E-Field, RC3 SO55/M ch/Hearing Aid Compatibility Test (101x101x1): Measurement grid:

dx=5mm, dy=5mm

Maximum value of peak Total field = 26.529 V/m

Probe Modulation Factor = 0.950

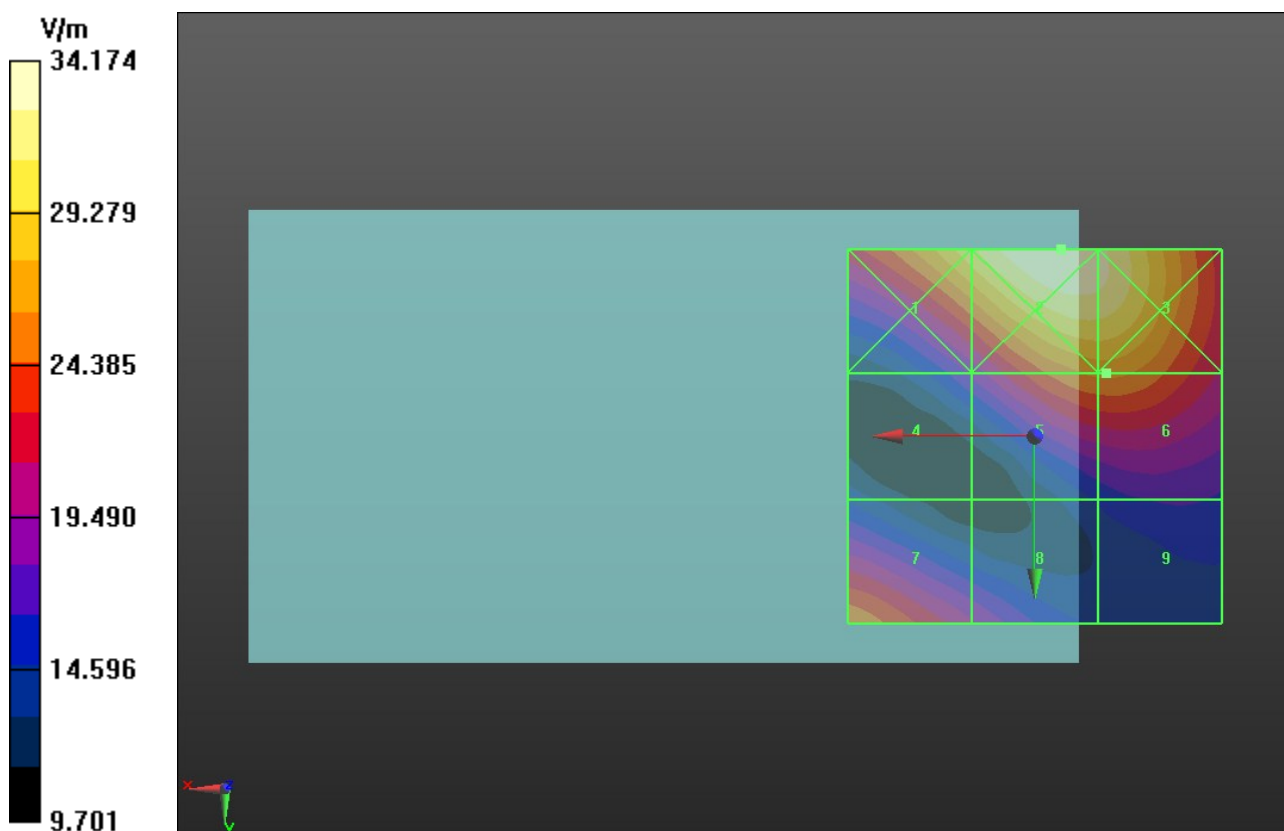
Device Reference Point: 0, 0, -6.3 mm

Reference Value = 21.359 V/m; Power Drift = -0.14 dB

Hearing Aid Near-Field Category: M4 (AWF 0 dB)

Peak E-field in V/m

Grid 1 30.537 M4	Grid 2 34.174 M4	Grid 3 33.126 M4
Grid 4 18.343 M4	Grid 5 26.481 M4	Grid 6 26.529 M4
Grid 7 26.048 M4	Grid 8 19.817 M4	Grid 9 16.505 M4



Test Laboratory: UL CCS SAR Lab C

CDMA BC1

Communication System: CDMA2000; Frequency: 1908.75 MHz; Duty Cycle: 1:1

Phantom section: RF Section

DASY4 Configuration:

- Probe: ER3DV6 - SN2339; ConvF(1, 1, 1); Calibrated: 1/20/2012

- Sensor-Surface: (Fix Surface)

- Electronics: DAE4 Sn1257; Calibrated: 10/25/2011

- Phantom: HAC Test Arch with AMCC; Type: SD HAC P01 BB

- Measurement SW: DASY52, Version 52.8 (0); SEMCAD X Version 14.4.5 (3634)

E-Field, RC3 SO55/H ch/Hearing Aid Compatibility Test (101x101x1): Measurement grid:

dx=5mm, dy=5mm

Maximum value of peak Total field = 33.653 V/m

Probe Modulation Factor = 0.950

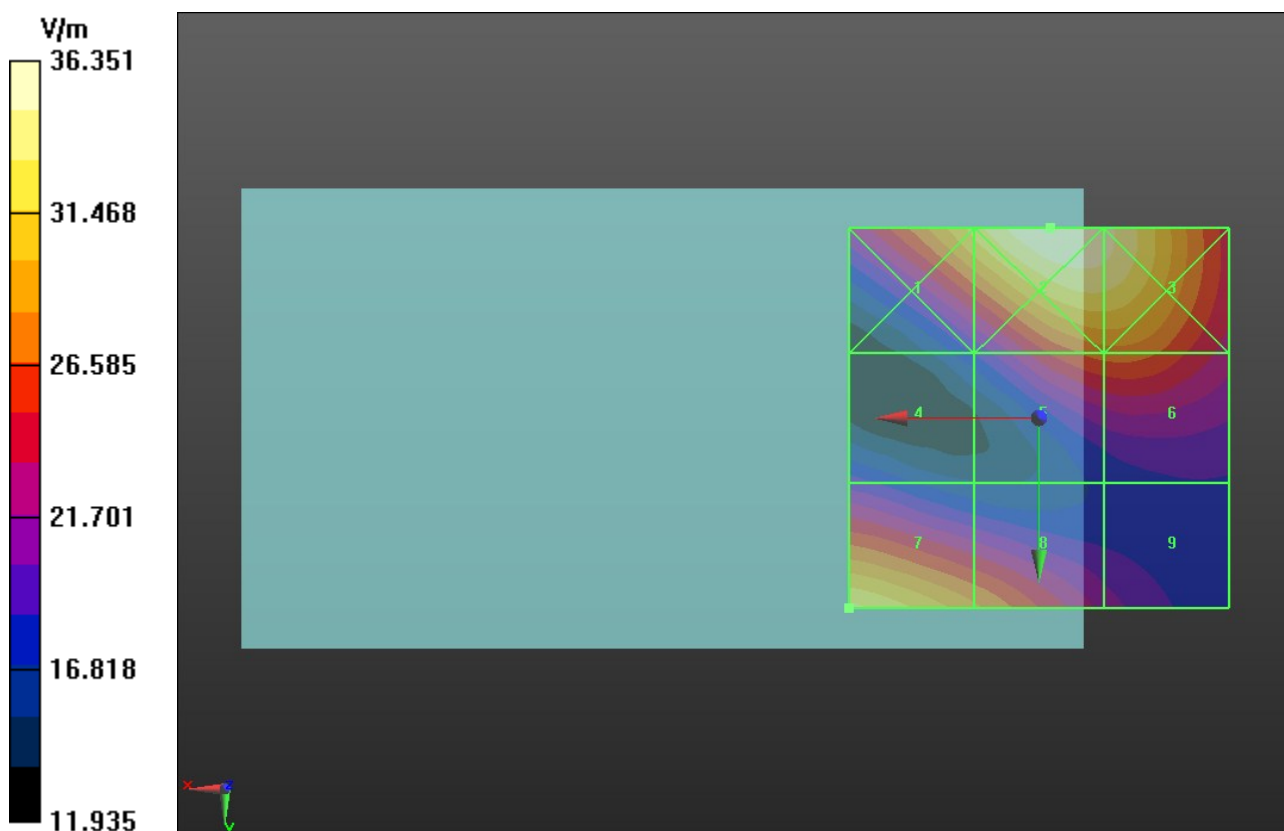
Device Reference Point: 0, 0, -6.3 mm

Reference Value = 20.266 V/m; Power Drift = -0.08 dB

Hearing Aid Near-Field Category: M4 (AWF 0 dB)

Peak E-field in V/m

Grid 1 32.246 M4	Grid 2 36.351 M4	Grid 3 35.300 M4
Grid 4 19.428 M4	Grid 5 27.367 M4	Grid 6 27.499 M4
Grid 7 33.653 M4	Grid 8 28.661 M4	Grid 9 21.191 M4



Test Laboratory: UL CCS SAR Lab C

CDMA BC15

Communication System: CDMA2000; Frequency: 1711.25 MHz; Duty Cycle: 1:1

Phantom section: RF Section

DASY4 Configuration:

- Probe: ER3DV6 - SN2339; ConvF(1, 1, 1); Calibrated: 1/20/2012

- Sensor-Surface: (Fix Surface)

- Electronics: DAE4 Sn1257; Calibrated: 10/25/2011

- Phantom: HAC Test Arch with AMCC; Type: SD HAC P01 BB

- Measurement SW: DASY52, Version 52.8 (0); SEMCAD X Version 14.4.5 (3634)

E-Field, RC3 SO55/L ch/Hearing Aid Compatibility Test (101x101x1): Measurement grid:

dx=5mm, dy=5mm

Maximum value of peak Total field = 34.965 V/m

Probe Modulation Factor = 0.960

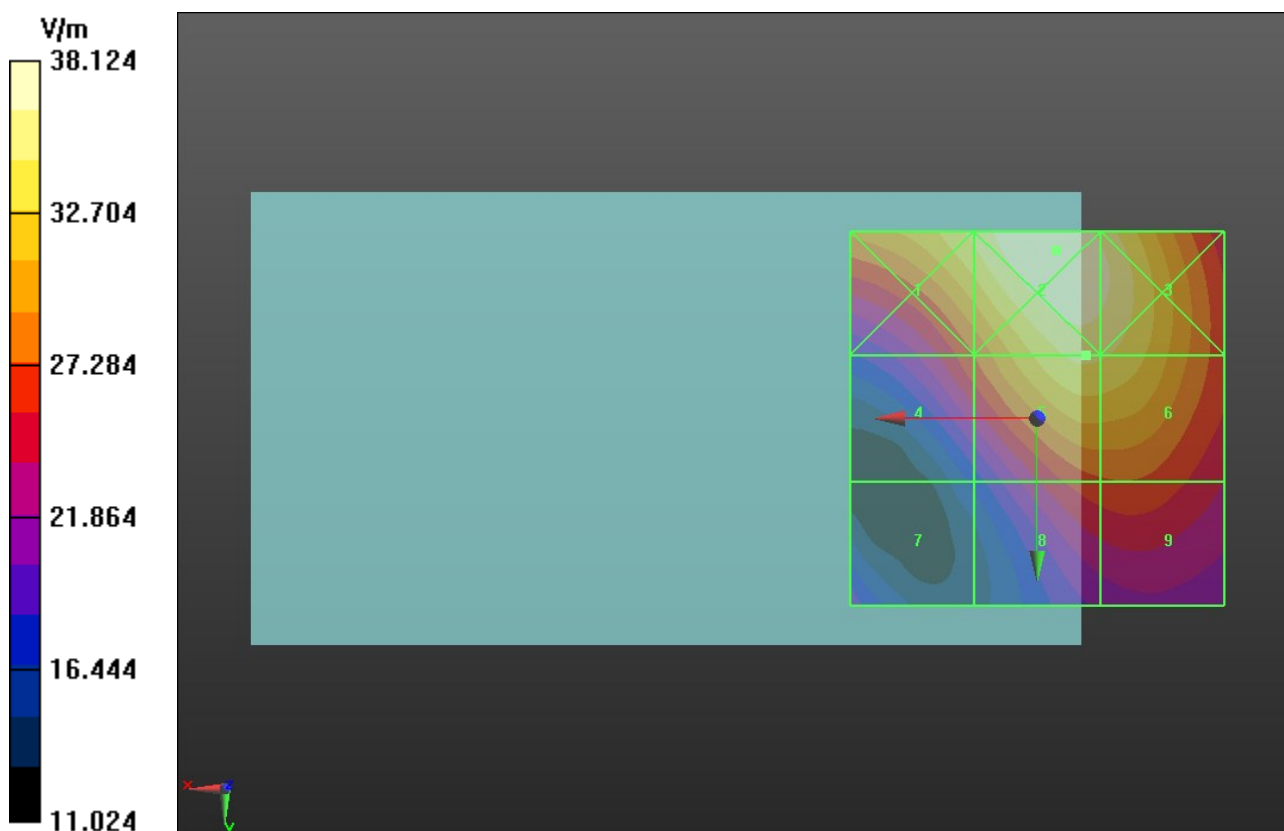
Device Reference Point: 0, 0, -6.3 mm

Reference Value = 39.228 V/m; Power Drift = -0.09 dB

Hearing Aid Near-Field Category: M4 (AWF 0 dB)

Peak E-field in V/m

Grid 1 35.084 M4	Grid 2 38.124 M4	Grid 3 36.877 M4
Grid 4 27.335 M4	Grid 5 34.965 M4	Grid 6 34.745 M4
Grid 7 19.855 M4	Grid 8 26.999 M4	Grid 9 27.252 M4



Test Laboratory: UL CCS SAR Lab C

CDMA BC15

Communication System: CDMA2000; Frequency: 1732.5 MHz; Duty Cycle: 1:1

Phantom section: RF Section

DASY4 Configuration:

- Probe: ER3DV6 - SN2339; ConvF(1, 1, 1); Calibrated: 1/20/2012
- Sensor-Surface: (Fix Surface)
- Electronics: DAE4 Sn1257; Calibrated: 10/25/2011
- Phantom: HAC Test Arch with AMCC; Type: SD HAC P01 BB
- Measurement SW: DASY52, Version 52.8 (0); SEMCAD X Version 14.4.5 (3634)

E-Field, RC3 SO55/M ch/Hearing Aid Compatibility Test (101x101x1): Measurement grid:

dx=5mm, dy=5mm

Maximum value of peak Total field = 29.578 V/m

Probe Modulation Factor = 0.960

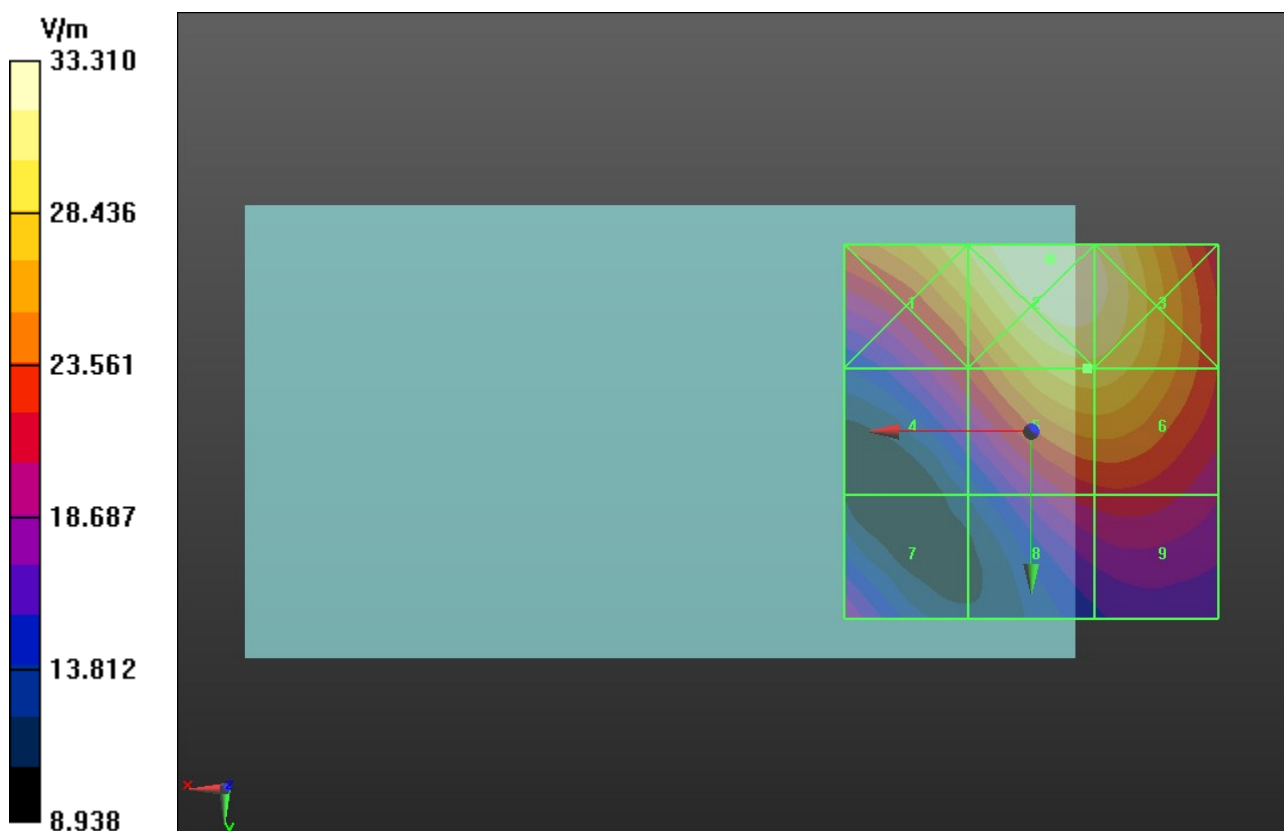
Device Reference Point: 0, 0, -6.3 mm

Reference Value = 31.355 V/m; Power Drift = -0.08 dB

Hearing Aid Near-Field Category: M4 (AWF 0 dB)

Peak E-field in V/m

Grid 1 30.362 M4	Grid 2 33.310 M4	Grid 3 32.366 M4
Grid 4 22.299 M4	Grid 5 29.578 M4	Grid 6 29.549 M4
Grid 7 18.801 M4	Grid 8 21.281 M4	Grid 9 21.587 M4



Test Laboratory: UL CCS SAR Lab C

CDMA BC15

Communication System: CDMA2000; Frequency: 1753.75 MHz; Duty Cycle: 1:1

Phantom section: RF Section

DASY4 Configuration:

- Probe: ER3DV6 - SN2339; ConvF(1, 1, 1); Calibrated: 1/20/2012

- Sensor-Surface: (Fix Surface)

- Electronics: DAE4 Sn1257; Calibrated: 10/25/2011

- Phantom: HAC Test Arch with AMCC; Type: SD HAC P01 BB

- Measurement SW: DASY52, Version 52.8 (0); SEMCAD X Version 14.4.5 (3634)

E-Field, RC3 SO55/H ch/Hearing Aid Compatibility Test (101x101x1): Measurement grid:

dx=5mm, dy=5mm

Maximum value of peak Total field = 37.209 V/m

Probe Modulation Factor = 0.960

Device Reference Point: 0, 0, -6.3 mm

Reference Value = 36.751 V/m; Power Drift = 0.11 dB

Hearing Aid Near-Field Category: M4 (AWF 0 dB)

Peak E-field in V/m

Grid 1 38.161 M4	Grid 2 42.573 M4	Grid 3 41.459 M4
Grid 4 26.948 M4	Grid 5 37.209 M4	Grid 6 37.209 M4
Grid 7 26.938 M4	Grid 8 25.673 M4	Grid 9 26.420 M4

