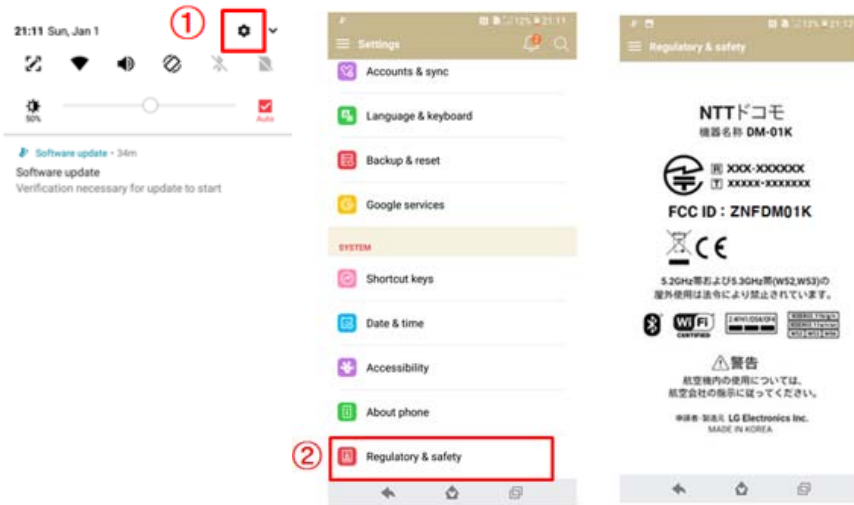


Description of E-Label on the ZNFDM01K

FCC ID is applied by E-Label on the device



Step 1	Settings
Step 2	Regulatory & Safety

Instruction of E-Label on the user manual

**Regulatory information
(FCC ID number, etc.)**

For regulatory details, operate from the Home screen, ► "Settings" ► "Regulatory & Safety" on your phone.

FCC ID is applied on packaging Label

Model No : DM-01K
 FCC ID : ZNFDM01K
 Made in XXXX
 IMEI : XXXXXXXXXXXXXXXXX

Note!

We, LG Electronics MobileComm USA, state that at the time of purchase, the FCC ID is readily and physically visible to the purchaser on the packaging Label per 2.925(d). So, The FCC ID will be able to survive normal shipping and handling so it is visible for inspection at the time of import. We have programmed the e-label and it is not able to be modified by any third party. Also, SIM Card in is not required to access the FCC ID number.