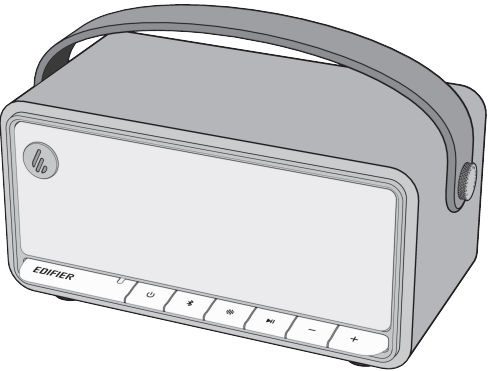


MP330
Portable Bluetooth Speaker



— Quick Start Guide —

Model: EDF100094

Manual Edition 0.1, February 2025

For more information, please visit our website:

www.edifier.com



@Edifierglobal



@Edifier_Global



@Edifier_Global

EDIFIER ConneX app



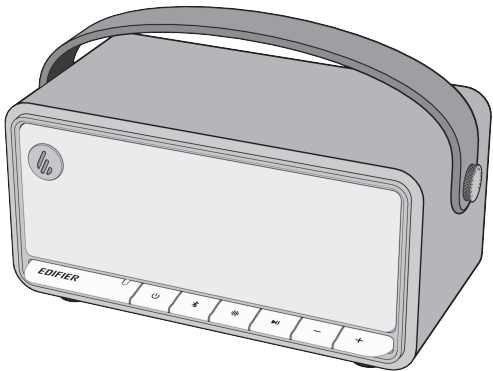
Edifier International Limited
P.O. Box 6264
General Post Office
Hong Kong

Tel: +852 2522 6989
Fax: +852 2522 1989
www.edifier.com
© 2025 Edifier International Limited. All rights reserved.
Printed in China

NOTICE:
For the need of technical improvement and system upgrade, information contained herein may be subject to change from time to time without prior notice.
Products of EDIFIER will be customized for different applications. Pictures and illustrations shown on this manual may be slightly different from actual product. If any difference is found, the actual product prevails.



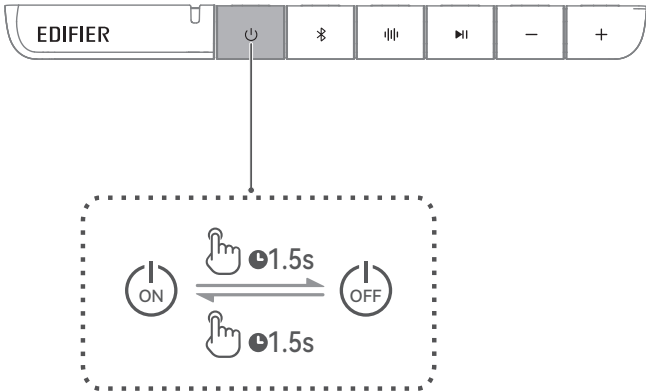
What's in the box?



Note:
• Images are for illustrative purpose only and may differ from the actual product.
• For the need of technical improvement and system upgrade, information and specifications contained herein may be slightly different from actual product. If any difference is found, the actual product prevails.



Power on/off

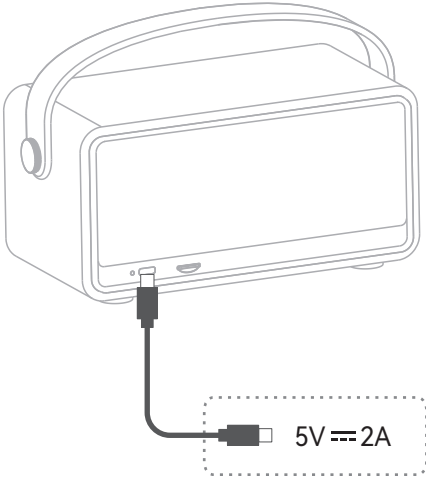


Press and hold the "⏻" button for 1.5 seconds to power on/off the product.

Power saving function
Note: When the speaker is not under charging, it will automatically power off if there are no audio playback and operation for 30 minutes. This function is enabled by default. You can disable it in the menu of "Settings" > "Power saving mode" on EDIFIER ConneX App.



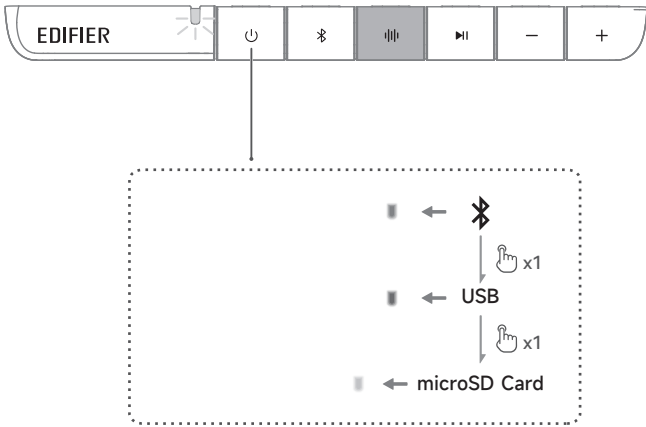
Charging



Note: * Power input: 5 V = 2A
* This plug type is meant for illustrative purpose only.
• You can play music on the speaker while charging.



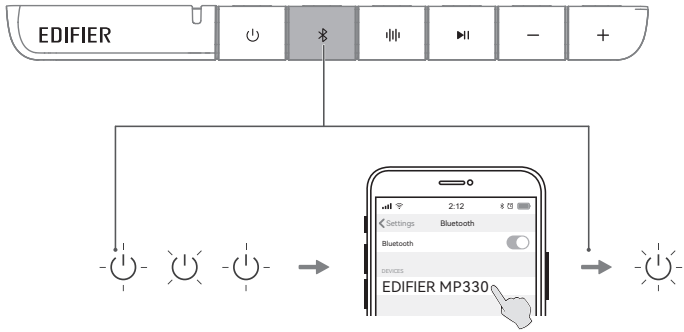
Source selection



Input	Bluetooth	USB	microSD Card
Indicator	Blue	Red	Yellow



Bluetooth connection



This speaker supports the simultaneous connection of two Bluetooth devices.

Connect to a device

1. Press the "⏻" button to witch to Bluetooth input mode. If no device is connected, the speaker will auto-enter Bluetooth pairing mode (LED blinking in blue). If not, press and hold the "🔗" button for 1.5 seconds.
 2. On your device, select "EDIFIER MP330" in its Bluetooth device list to connect, and the blue LED will be steady lit when the connection is established.
- To disconnect from the current Bluetooth device, press and hold the "🔗" button for 1.5 seconds.

Connect to two devices

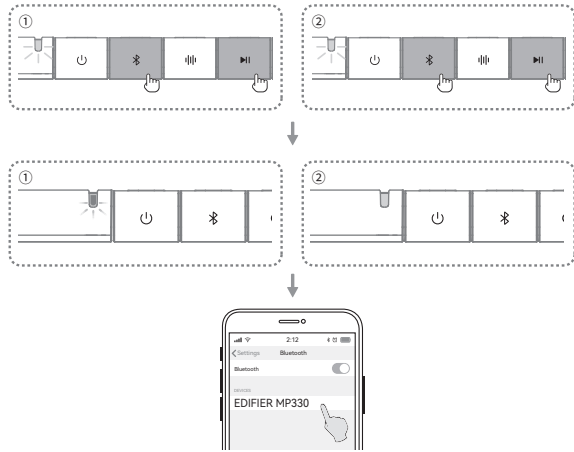
1. Connect to a device, and then press and hold the "🔗" button for 1.5 seconds (LED blinking in blue).
 2. On the second device, select "EDIFIER MP330" in its Bluetooth device list to connect, and the blue LED will be steady lit when the connection is established.
 3. On the first device, select "EDIFIER MP330" in its Bluetooth device list to reconnect.
- Pause or stop playback on the current Bluetooth device before streaming audio from the second one.

Note:

- Pin code for connection is "0000" if needed.
- To enjoy all Bluetooth functions of this speaker, make sure that your audio source device supports A2DP and AVRCP profiles.
- If no device is connected in 10 minutes, the speaker will switch to Bluetooth hidden mode. The blue indicator will in breathing pattern. In this mode, (1) new devices cannot find the speaker, but (2) for a device that exists in the pairing record of this speaker, you can select "EDIFIER MP330" from its Bluetooth device list to reconnect. To exit from Bluetooth hidden mode, press the "🔗" or "⏻" button on the speaker.
- After switched to Bluetooth input, the speaker will reconnect to the last connected devices automatically.



Bluetooth stereo pairing



Pair two MP330 speakers to enjoy stereo sound.

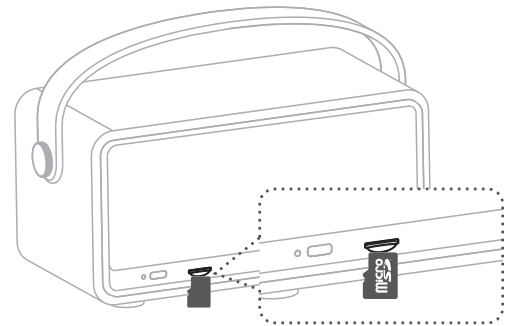
1. Press and hold the "🔗" and "▶️" buttons on the first MP330. The white LED will be in breathing pattern.
 2. Press and hold the "🔗" and "▶️" buttons on the second MP330. The white LED will be in breathing pattern.
- During pairing, you can press the "🔗" or "⏻" button to exit pairing mode.
 - Once the connection is established, the blue LED on the first MP330 will be steady lit or blink fast, and the white LED on the second MP330 will be steady lit.
3. Connect the first MP330 to your Bluetooth device and start playing.
- To exit the stereo mode, press and hold the "🔗" and "⏻" buttons.

Note:

- The first MP330 will work as the master speaker. You can control play on the first MP330.
- The first MP330 will deliver right channel audio and the second one is for the left channel audio.



microSD card mode



Note:

- When a microSD card is inserted, the speaker will automatically switch to microSD card mode.
- If no microSD card is present, the speaker cannot be manually set to microSD card mode.
- In microSD card mode, the speaker will automatically switch to Bluetooth mode once the microSD card is removed.

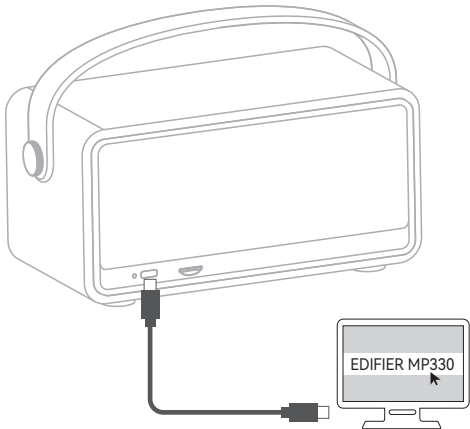
Manage card files

In microSD card mode, you can easily manage files using the USB cable that is connected between the speaker and your computer.

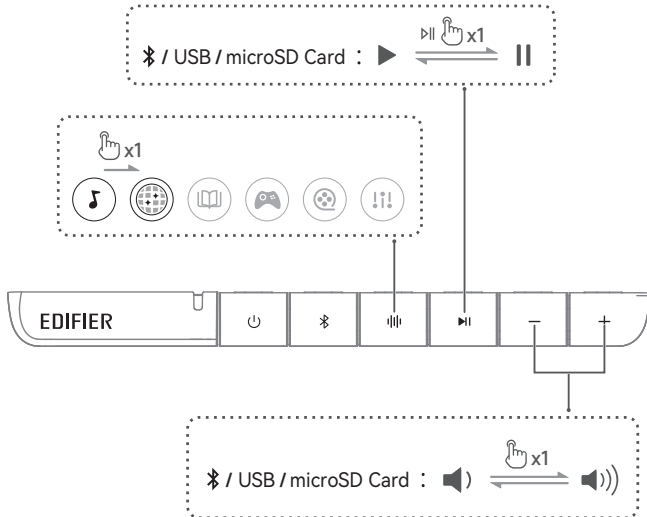
1. Make sure that the USB cable is securely connected between the speaker and your computer.
2. Press the "⏻" button to switch to microSD card mode (the yellow indicator steady lit), and then press and hold the "▶️" and "+" buttons for 1.5 seconds (the yellow indicator in breathing pattern).
3. Add or delete files on the card.
4. Press the "⏻" button to return to microSD card mode (the yellow indicator steady lit).



USB connection



Play control



Note:

- The following operating systems support USB audio streaming: Windows 11, Windows 10, Windows 8, and Windows 7.
- When a USB cable is connected, the speaker will automatically switch to USB audio streaming mode.
- If no USB cable is connected, the USB audio streaming mode cannot be manually activated.
- In USB audio streaming mode, the speaker will automatically switch to Bluetooth mode once the USB cable is disconnected.

Note:

- In USB audio streaming mode, volume sync is not supported. To adjust the volume, adjust on the speaker and your device separately.
- You can press the "🔊" button to toggle through two sound effects by default. On the EDIFIER ConneX App, you can assign up to three preset or customized sound effects to the button.



EDIFIER ConneX mobile app

1. With your smart device, scan the QR code on the quick start guide or the packaging.
- You can also search for "EDIFIER ConneX" in Apple App Store (iOS devices) or Google Play (Android devices).
2. Download and install the app.
3. Connect your smart device with the speaker via Bluetooth.
4. In Bluetooth mode, open EDIFIER ConneX App on your smart device.
5. Tap the menu for settings and playback control.

Note: The BLE connection between your smart device and the speaker remains active when the speaker is switched to USB or microSD card mode.

Total output power (RMS): 18W (Mid-bass) + 11W (Tweeter) + 11W (Tweeter)
Frequency response: 53Hz-40kHz

Declaration for EU
Frequency Band (Bluetooth): 2.402GHz ~ 2.480GHz
RF Power Output (Bluetooth): ≤ 10 dBm (EIRP)
There is no restriction of use.

Manufacturer: Edifier International Limited
Address: P.O. Box 6264 General Post Office Hong Kong

This product meets the requirements of the restriction of hazardous substances in electrical and electronic equipment (2011/65/EU Directive and 2015/863 Directive) issued by European Parliament and EU Council on March 31, 2015.

Hereby, Edifier International Limited declares that the radio equipment is in compliance with Directive 2014/53/EU. The full text of the EU declaration of conformity is available at the following internet address: <https://www.edifier.com/global/eu-doc>

To learn more about EDIFIER, please visit www.edifier.com

For EDIFIER warranty queries, please visit the relevant country page on www.edifier.com and review the section titled Warranty Terms. USA and Canada: service@edifier.ca
South America: Please visit www.edifier.com (English) or www.edifierla.com (Spanish/Portuguese) for local contact information.