

# Request for Class II Permissive Change

FCC ID: **YZZGVC3200**

Date: Nov 8<sup>th</sup>, 2015

TO: Federal Communication Commission

Please be notified that we, the under signed, Grandstream Networks, Inc. hereby declare that the reasons for this Class II permissive change are as below:

GVC3202 is GVC3200 derivative. The main difference is that GVC3202 main board removed the HDMI OUT3 Interface and replaced the OLYMPUS lens with UNION len.

1. Removed the HDMI OUT3 socket J1201; Removed the HDMI transmitter U1201;  
Removed the HDMI OUT3 TVS array.
2. Removed the FPGA DDR3 memory U1702.
3. replaced the OLYMPUS len with UNION's.
4. The fixing holes on the sensor board moved 3mm further away from the PCB edge in the horizontal direction.
5. The socket CON1 on the lens-driver board moved 3mm further to the near PCB edge in the vertical direction.
6. Wireless module and it's antenna is exactly identical as before.

Anything else are the same as before.(pls see EUT photos below)

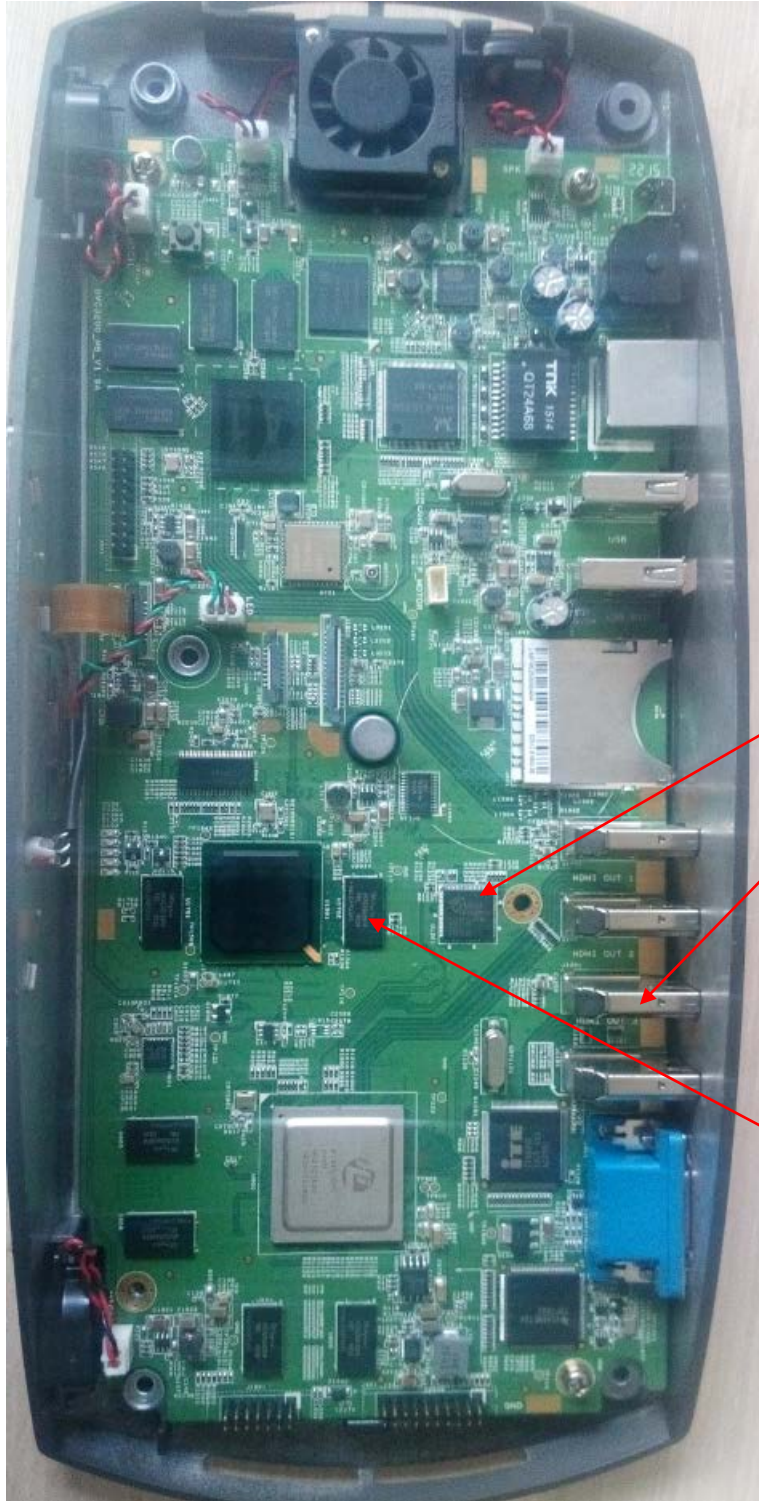
Grandstream Networks, Inc.

4<sup>th</sup> Floor, Rainbow Technology Building #16 New  
West Rd, Nanshan Science & Technology Park  
(North District), Shenzhen, China 518057

Web site: <http://www.grandstream.com.cn>  
Email: [Nwei@grandstream.com](mailto:Nwei@grandstream.com)

Tel:86-755-26014600  
Fax:86-755-26014601

### Original main board photo



Grandstream Networks, Inc.

4<sup>th</sup> Floor, Rainbow Technology Building #16 New  
West Rd, Nanshan Science & Technology Park  
(North District), Shenzhen, China 518057

Web site: <http://www.grandstream.com.cn>  
Email: [Nwei@grandstream.com](mailto:Nwei@grandstream.com)

Tel:86-755-26014600  
Fax:86-755-26014601

---

### New main board photo





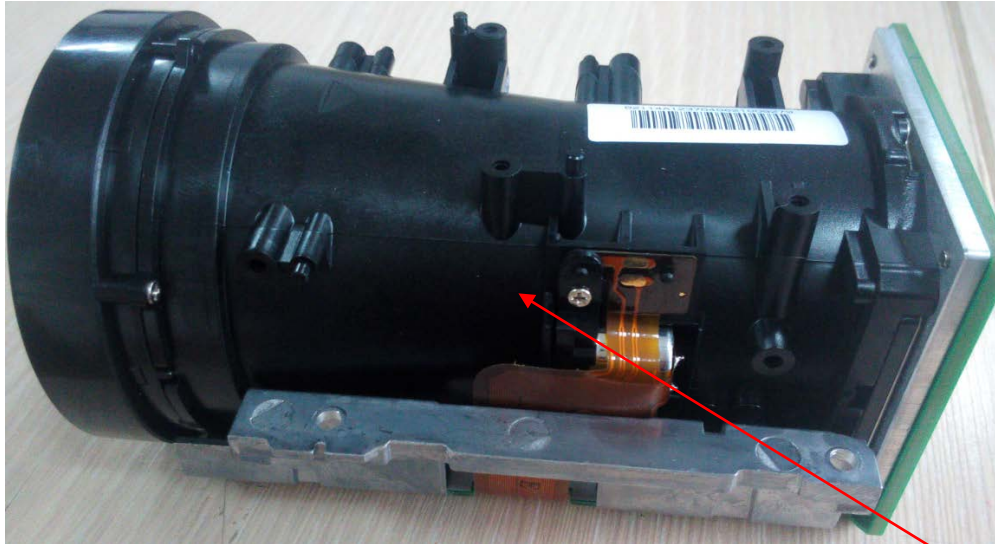
Grandstream Networks, Inc.

4<sup>th</sup> Floor, Rainbow Technology Building #16 New  
West Rd, Nanshan Science & Technology Park  
(North District), Shenzhen, China 518057

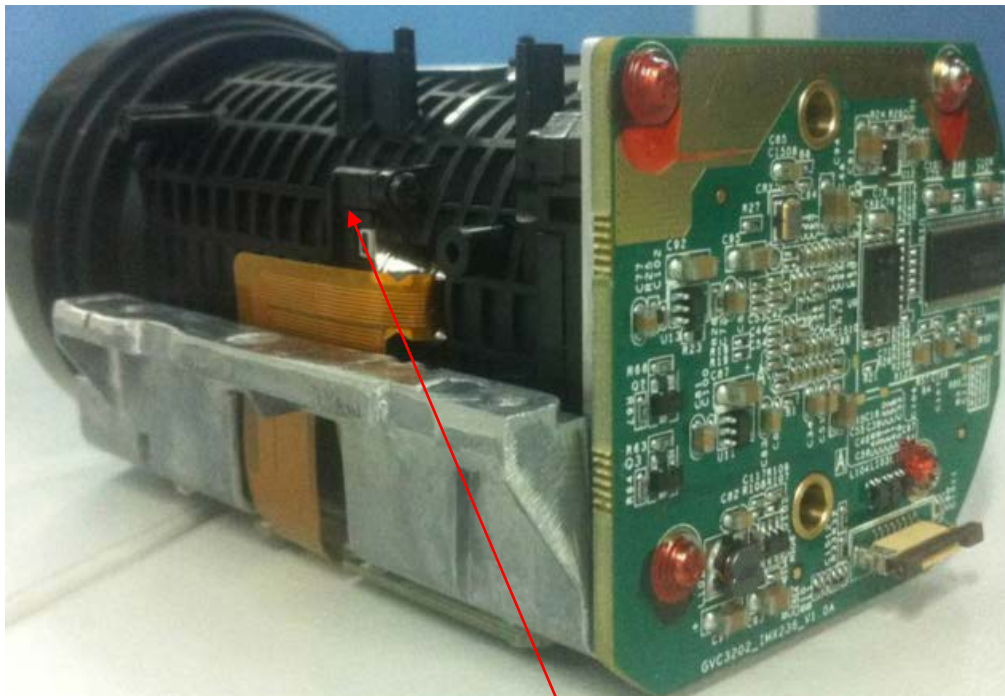
Web site: <http://www.grandstream.com.cn>  
Email: [Nwei@grandstream.com](mailto:Nwei@grandstream.com)

Tel:86-755-26014600  
Fax:86-755-26014601

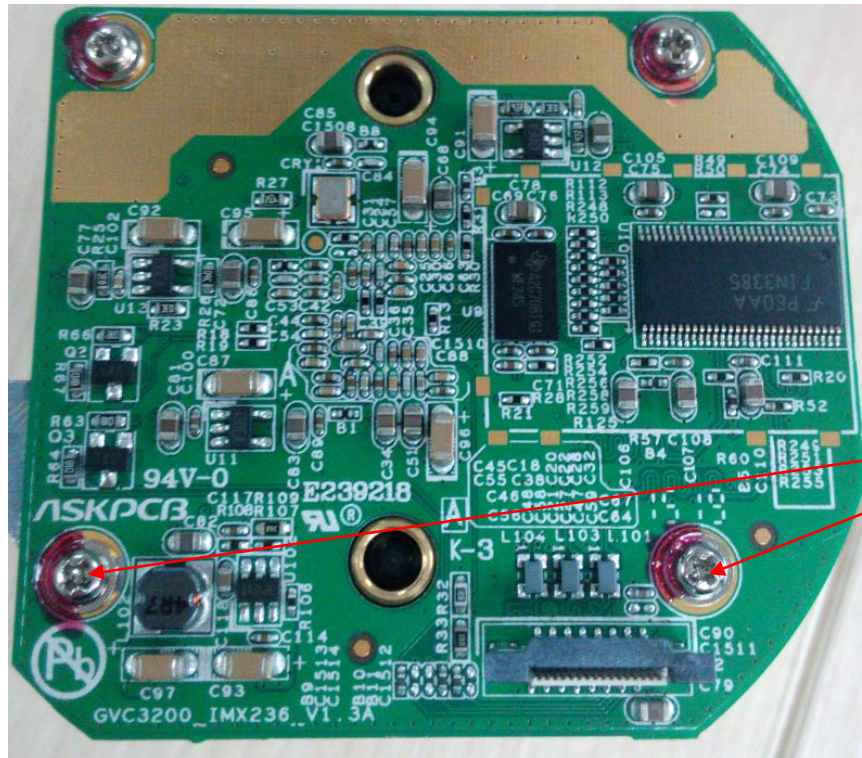
### Original EUT len photo



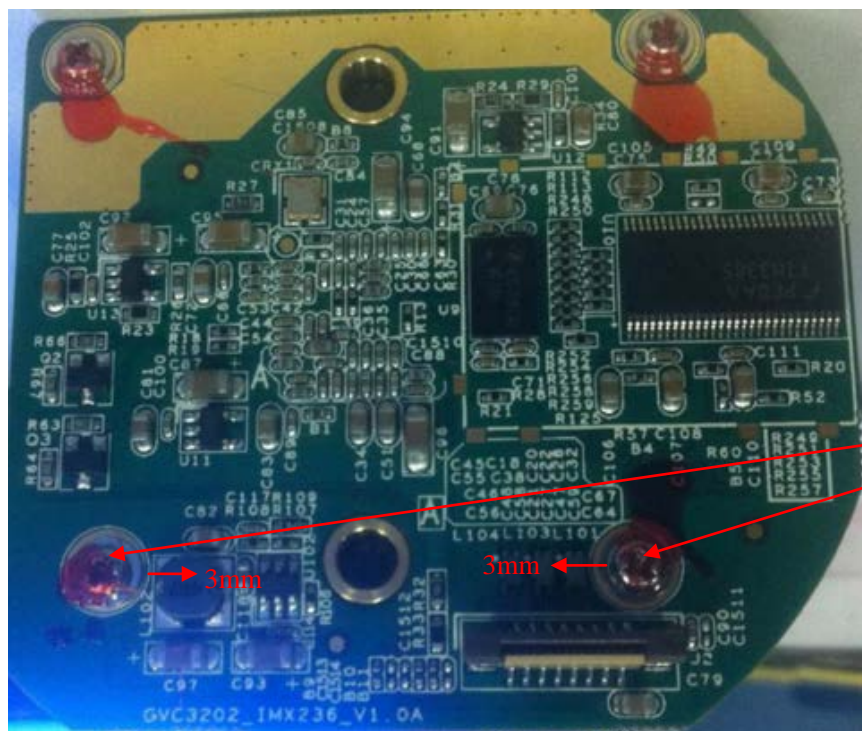
### New EUT len photo



### Original EUT sensor board photo



### New EUT sensor board photo

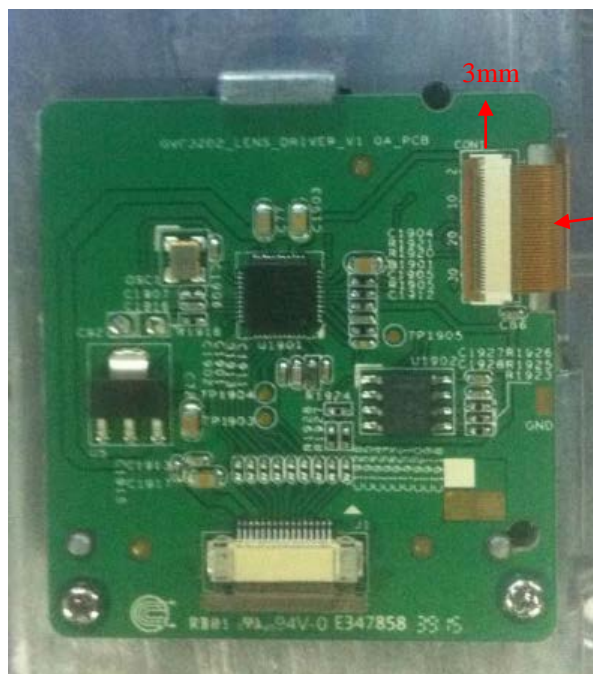




### Original EUT lens-driver board photo



### New EUT lens-driver board photo



Grandstream Networks, Inc.

4<sup>th</sup> Floor, Rainbow Technology Building #16 New  
West Rd, Nanshan Science & Technology Park  
(North District), Shenzhen, China 518057

Web site: <http://www.grandstream.com.cn>  
Email: [Nwei@grandstream.com](mailto:Nwei@grandstream.com)

Tel:86-755-26014600  
Fax:86-755-26014601

---

Sincerely,

A handwritten signature in blue ink, appearing to read 'Ning Wei', is written over a blue circular stamp. The stamp contains the text 'GRANDSTREAM NETWORKS INCORPORATED' around the perimeter and 'GRANDSTREAM' in the center.

Ning Wei /Deputy managemet

Phone:0755-26014600

FAX:0755-26014601

Email:[Nwei@grandstream.com](mailto:Nwei@grandstream.com)