

# FCC TEST REPORT

Under:  
FCC Part 15, Class B

Prepared For :

## **Grandstream Networks, Inc.**

4th Floor, Rainbow Technology Building #16 New West Rd, Nanshan Science & Technology Park  
(North District), Shenzhen, China 518057

<b>FCC ID: YZZDP750</b>
<b>EUT: DECT Cordless VoIP Phone</b>
<b>Model: DP720</b>

January 28, 2016
<b>Issue Date:</b>
Original Report
<b>Report Type:</b>
<i>Eric Guo</i>
<b>Test Engineer:</b> Eric Guo
<i>Apollo Liu</i>
<b>Review By:</b> Apollo Liu / Manager

The test report consists 25 pages in total. It may be duplicated completely for legal use with the allowance of the applicant. It shall not be reproduced except in full, without the written approval of Ke Mei Ou Laboratory Corporation. The test result in the report only applied to the tested sample.

## TABLE OF CONTENTS

<b>1. General Information .....</b>	<b>3</b>
1. 1 Notes .....	3
1. 2 Testing Laboratory .....	3
1. 3 Details of Applicant .....	3
1. 4 Application Details .....	3
1. 5 Test Item .....	3
1. 6 Test Standards .....	3
<b>2. Technical Test .....</b>	<b>4</b>
2. 1 Summary of Test Results .....	4
<b>3. EUT Modifications .....</b>	<b>4</b>
<b>4. Conducted Power Line Test.....</b>	<b>5</b>
4. 1 Test Equipment .....	5
4. 2 Test Procedure .....	5
4. 3 Test Setup .....	5
4. 4 Configuration of The EUT.....	6
4. 5 EUT Operating Condition.....	7
4. 6 Conducted Power Line Emission Limits .....	7
4. 7 Conducted Power Line Test Result.....	8
<b>5. Radiated Emission Test.....</b>	<b>10</b>
5. 1 Test Equipment .....	10
5. 2 Test Procedure .....	10
5. 3 Radiated Test Setup .....	10
5. 4 Configuration of The EUT.....	11
5. 5 EUT Operating Condition.....	11
5. 6 Radiated Emission Limit .....	11
5. 7 Radiated Emission Test Result.....	12
<b>6. Photo of Testing.....</b>	<b>15</b>
6.1 Emission test view.....	15
6.2 Photograph - EUT.....	17
<b>7. FCC ID Label.....</b>	<b>24</b>
<b>8. Test Equipment.....</b>	<b>25</b>

## 1. General Information

### 1.1 Notes

The test results of this report relate exclusively to the test item specified in 1.5. The KMO Lab does not assume responsibility for any conclusions and generalizations drawn from the test results with regard to other specimens or samples of the type of the equipment represented by the test item. The test report may only be reproduced or published in full. Reproduction or publication of extracts from the report requires the prior written approval of the KMO Lab.

### 1.2 Testing Laboratory

#### Ke Mei Ou Laboratory Co., Ltd.

ANSI-ASQ National Accreditation Board/ACCLASS ISO/IEC 17025 Accredited Lab for telecommunication standards. The Registration Number is AT-1532. The testing quality system meets with ISO/IEC-17025 requirements, This approval results is accepted by MRA of ILAC.

FCC Test Site Registration Number: 962205

IC Test Site Registration Number: 4986A-2

Internet: [www.kmolab.com](http://www.kmolab.com)

### 1.3 Details of Applicant

Name : Grandstream Networks, Inc.

Address : 4th Floor, Rainbow Technology Building #16 New West Rd, Nanshan Science & Technology Park (North District), Shenzhen, China 518057

### 1.4 Application Details

Date of Receipt of Application : October 28, 2015

Date of Receipt of Test Item : October 28, 2015

Date of Test : December 14, 2015~January 28, 2016

### 1.5 Test Item

Manufacturer : Same as applicant

Address : Same as applicant

Trade Name : Grandstream

Model No.(Base) : DP720

Model No.(Extension) : N/A

Description : DECT Cordless VoIP Phone

### Additional Information

Frequency : 1921.536~1928.448MHz

RF Power : PP-72.61mW; FP- Ant0: 72.61mW, Ant1:93.97mW(Conducted Peak)

Number of Channels : 5

Type of Modulation : GFSK

Power Supply : DC 5V/1A(Adapter model: F06US0500100A)

DC 5V/1A(Adapter model: NBS05B050100VU)

Antenna : PP-Internal (0dBi); FP-Internal Ant0&Ant1 (0dBi)

UPCS Channel	Frequency (MHz)
Upper Band Edge	1930.000
0 (Highest)	1928.448
1	1926.720
2	1924.992
3	1923.264
4 (Lowest)	1921.536
Lower Band Edge	1920.000

Requirement: FCC15.303(d),(g) Within 1920~1930 MHz band for isochronous devices.

### 1.6 Test Standards

FCC Part 15, Class B

Note: All radiated measurements were made in all three orthogonal planes. The values reported are the maximum values.

## 2. Technical Test

### 2.1 Summary of Test Results

The EUT has been tested according to the following specifications:

Standard	Test Type	Result	Notes
FCC Part 15, Paragraph 15.107	Conducted Test	PASS	Complies
FCC Part 15, Paragraph 15.109	Radiated Test	PASS	Complies

## 3. EUT Modifications

No modification by test lab.

## 4. Conducted Power Line Test

### 4.1 Test Equipment

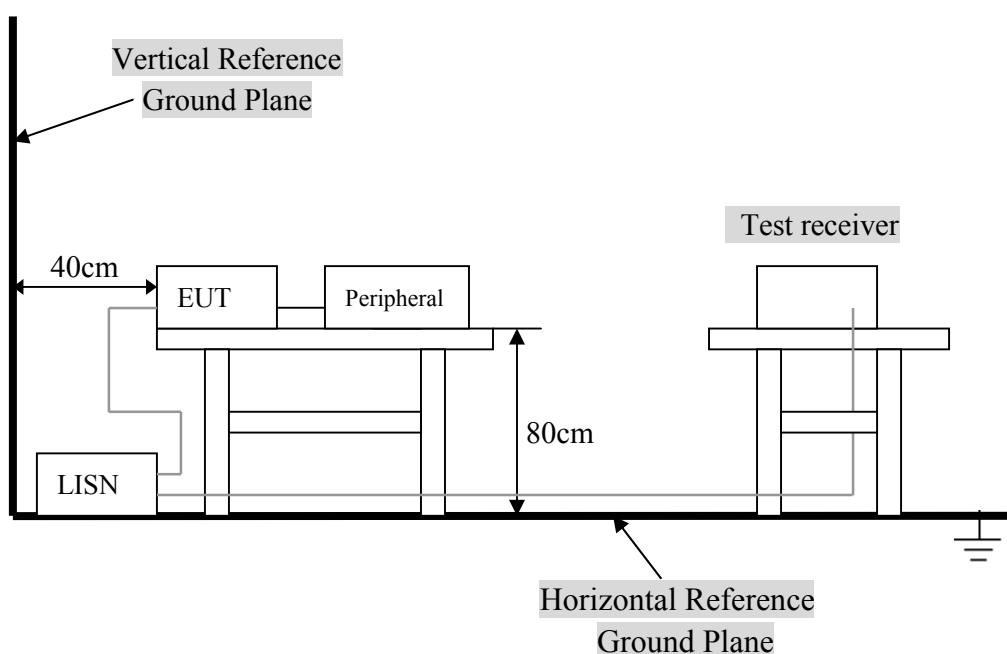
Please refer to Section 8 this report.

### 4.2 Test Procedure

The EUT and simulators are connected to the main power through a line impedance stabilization network (L.I.S.N.). This provides a 50 ohm/50uH coupling impedance for the measuring equipment. The peripheral devices are also connected to the main power through a LISN that provides a 50ohm/50uH coupling impedance with 50ohm termination.

Both sides of A.C. line are checked for maximum conducted interference. In order to find the maximum emission., the relative positions of equipment and all of the interface cables must be changed according to ANSI C63.4:2014 on conducted measurement. Conducted emissions were investigated over the frequency range from 0.15MHz to 30MHz using a receiver bandwidth of 9kHz.

### 4.3 Test Setup



For the actual test configuration, Please refer to the related items – Photos of Testing.

#### 4. 4 Configuration of The EUT

The EUT was configured according to ANSI C63.4:2014. All interface ports were connected to the appropriate peripherals. All peripherals and cables are listed below.

##### A. EUT

Device	Manufacturer	Model #	FCC ID
DECT Cordless VoIP Phone	Same as applicant	DP720	YZZDP720

##### B. Internal Devices

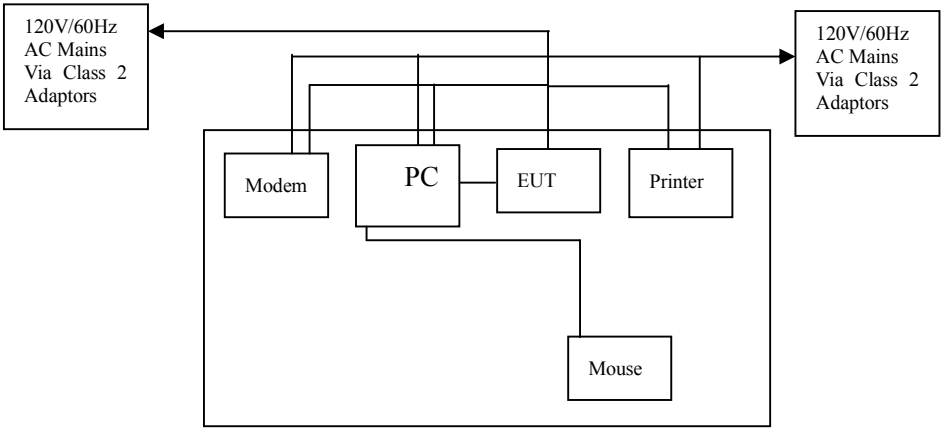
Device	Manufacturer	Model #	FCCID / DoC
N/A			

##### C. Peripherals

Device	Manufacturer	Model # Serial #	FCC ID/ DoC	Cable
Printer	HP	HP930C	DoC	1.5m unshielded power cord 1.2m unshielded data cable.
Modem	GVC	N/A	DoC	1.5m unshielded power cord 1.2m unshielded data cable.
Notebook	DELL	PP10L	DoC	1.5m unshielded power cord
PC	Dell	2400n	DoC	1.5m unshielded power cord

4. 5 EUT Operating Condition

- Operating condition is according to ANSI C63.4:2014.
- A. Setup the EUT and simulators as shown on follow.
  - B. Enable RF signal and confirm EUT active.
  - A. Modulate output capacity of EUT up to specification.



4. 6 Conducted Power Line Emission Limits

Frequency Range (MHz)	Class A QP/AV (dBuV)	Class B QP/AV (dBuV)
0.15 – 0.5	79/66	66 –56/56 –46
0.5 – 5.0	73/60	56/46
5.0 – 30	73/60	60/50

**Note:** In the above table, the tighter limit applies at the band edges.

## 4. 7 Conducted Power Line Test Result

Product	: DECT Cordless VoIP Phone	Test Mode	: Normal Link / Auto
Test Item	: Conducted Emission Data	Temperature	: 25 °C
Test Voltage	: DC 5V	Humidity	: 56%RH
Test Result	: <b>PASS</b>	Adapter Model	:

The frequency spectrum from 0.15 MHz to 30 MHz was investigated. All readings are quasi -peak values with a resolution bandwidth of 9 KHz.

- Temperature : 26 °C
- Humidity : 53 % RH

FP:

Adapter model: F06US0500100A

FCC Part 15 Paragraph 15.107							
Frequency (MHz)	Emission (dBuV)		LINE/ NEUTRAL	Limit (dBuV)		Margin (dB)	
	QP	AV		QP	AV	QP	AV
0.154	43.45	30.52	Line	65.78	55.78	-22.33	-25.26
0.530	42.78	34.91	Neutral	56.00	46.00	-13.22	-11.09
0.166	41.43	29.72	Line	65.16	55.16	-23.73	-25.44
11.270	48.51	36.43	Neutral	60.00	50.00	-11.49	-13.57
0.534	43.34	37.45	Line	56.00	46.00	-12.66	-8.55
12.678	48.98	37.67	Neutral	60.00	50.00	-11.02	-12.33

Note: NF = No Significant Peak was Found.

Adapter model: NBS05B050100VU

FCC Part 15 Paragraph 15.107							
Frequency (MHz)	Emission (dBuV)		LINE/ NEUTRAL	Limit (dBuV)		Margin (dB)	
	QP	AV		QP	AV	QP	AV
0.154	43.43	30.69	Line	65.78	55.78	-22.35	-25.09
0.166	41.15	30.09	Neutral	65.16	55.16	-24.01	-25.07
0.166	41.48	30.01	Line	65.16	55.16	-23.68	-25.15
0.210	38.65	29.84	Neutral	63.21	53.21	-24.56	-23.37
0.178	40.07	29.98	Line	64.58	54.58	-24.51	-24.60
0.498	40.98	30.83	Neutral	56.03	46.03	-15.05	-15.20

Note: NF = No Significant Peak was Found.

Note:

- 1.Uncertainty in conducted emission measured is <+/- 2dB.
- 2.The emission levels of other frequencies were very low against the limit.
- 3.All Reading Levels are Quasi-Peak and Average value.
- 4.Emission = Meter Reading + Factor; Factor = Insertion Loss + Cable Loss.
- 5.Margin Value = Emission Level - Limit Value.



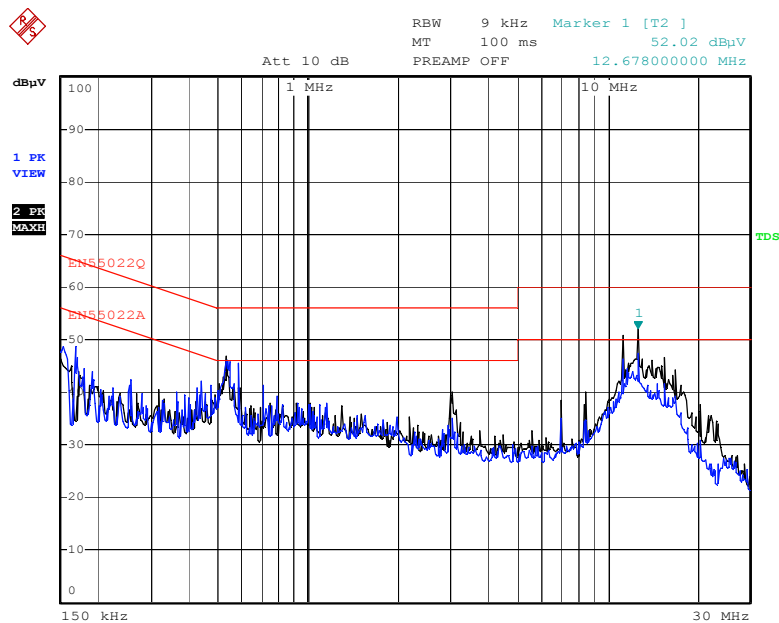
**Conducted Emission****FCC 15.107**

Test Specification: LINE&amp;NEUTRAL

Comment:

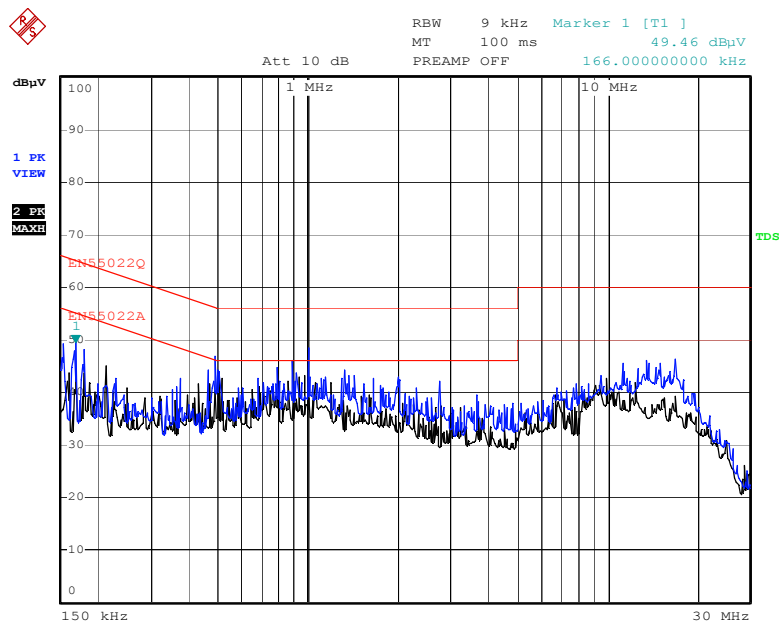
FP:

Adapter model: F06US0500100A



Date: 15.DEC.2015 13:53:00

Adapter model: NBS05B050100VU



Date: 15.DEC.2015 14:00:00

## 5. Radiated Emission Test

### 5.1 Test Equipment

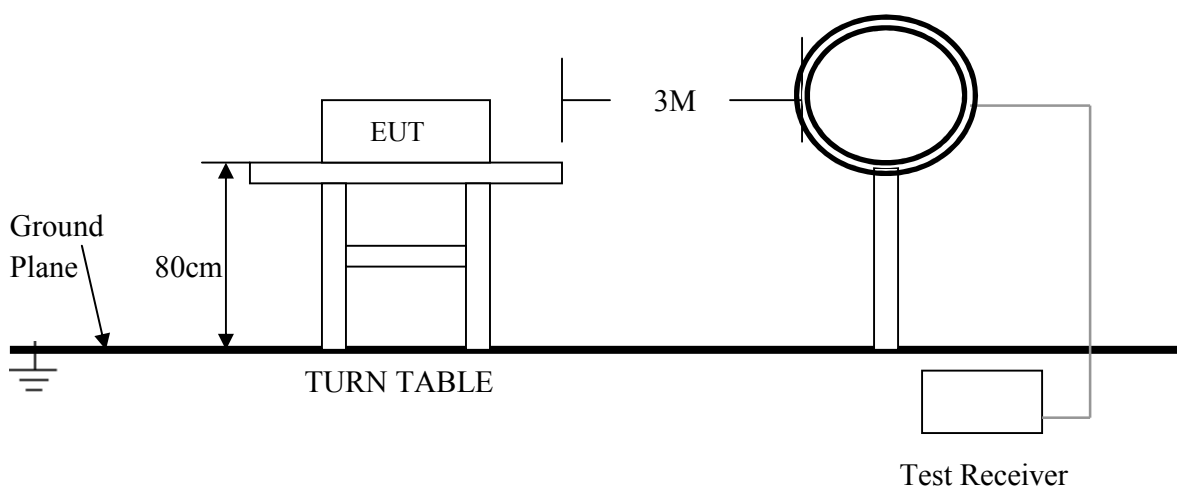
Please refer to Section 8 this report.

### 5.2 Test Procedure

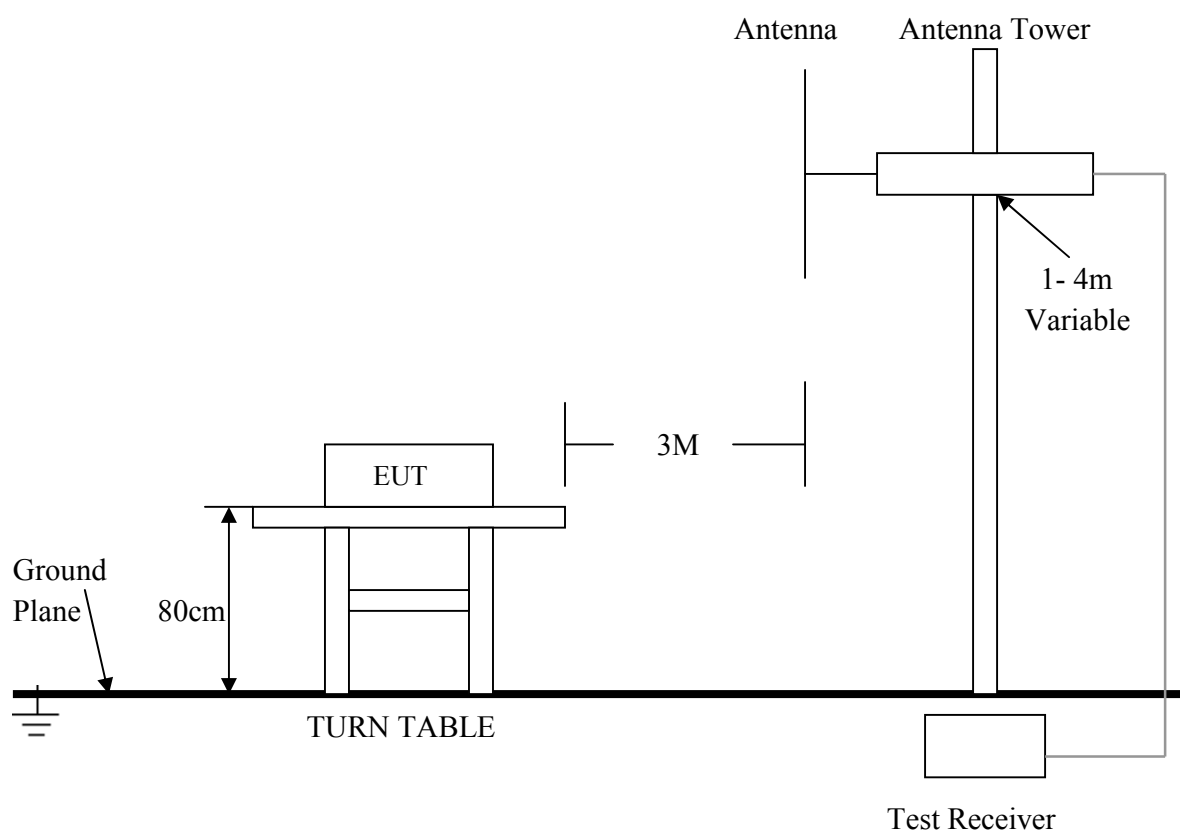
1. The EUT was tested according to ANSI C63.4:2014.
2. The EUT, peripherals were put on the turntable which table size is 1m x 1.5 m, table high 0.8 m, and which is 1.5 m high for above 1 GHz. All set up is according to ANSI C63.4:2014 .
3. The frequency spectrum from 9 kHz to 25 GHz was investigated. All readings from 9 kHz to 150 kHz are quasi-peak values with a resolution bandwidth of 200 Hz. All readings from 150 kHz to 30 MHz are quasi-peak values with a resolution bandwidth of 9 KHz. All readings from 30 MHz to 1 GHz are quasi-peak values with a resolution bandwidth of 120 KHz. All readings are above 1 GHz , peak values with a resolution bandwidth of 1 MHz . Measurements were made at 3 meters.
4. The emissions from the EUT were measured continuously at every azimuth by rotating the turntable. The Receiving antenna high is varied from 1 m to 4 m high to find the maximum emission for each frequency. Emissions below 30MHz were measured with a loop antenna while emission above 30MHz were measured using a broadband E-field antenna.
5. Maximizing procedure was performed on the six (6) highest emissions to ensure EUT compliance is with all installation combinations. All data was recorded in the peak detection mode. Quasi-peak readings was performed only when an emission was found to be marginal (within -4 dB of specification limit), and are distinguished with a "QP" in the data table.
6. Each emission was to be maximized by changing the polarization of receiving antenna both horizontal and vertical. In order to find out the max. emission, the relative positions of this transmitter(EUT) was rotated through three orthogonal axes according to the requirements in Section 8 and 13 of ANSI C63.4:2014

### 5.3 Radiated Test Setup

For Frequencies below 30 MHz



For the actual test configuration , please refer to the related items – Photos of Testing

**For Frequencies above 30 MHz**

For the actual test configuration , please refer to the related items – Photos of Testing

**5. 4 Configuration of The EUT**

Same as section 4.4 of this report

**5. 5 EUT Operating Condition**

Same as section 4.5 of this report

**5. 6 Radiated Emission Limit**

All emission from a digital device, including any network of conductors and apparatus connected thereto, shall not exceed the level of field strength specified below:

Frequencies in restricted band are complied to limit on Paragraph 15.109.

Frequency (MHz)	Distance (m)	Field Strength (dBuV/m)
30 - 88	3	40.0
88 - 216	3	43.5
216 - 960	3	46.0
Above 960	3	54.0

**Note:**

1. In the emission tables above, the tighter limit applies at the band edges.
2. Distance refers to the distance between measuring instrument, antenna, and the closest point of any part of the device or system.
3. The lower limit shall apply at the transition frequencies.

## 5.7 Radiated Emission Test Result

Product	: DECT Cordless VoIP Phone	Test Mode	: Normal Link / Auto
Test Item	: Fundamental Radiated Emission Data	Temperature	: 25 °C
Test Voltage	: DC 5V	Humidity	: 56%RH
Test Result	: <b>PASS</b>	Model	:

### For Frequency below 30MHz

Freq. (MHz)	Emission (dBuV/m) QP Detector	HORIZ / VERT	Limits (dBuV/m)	Margin (dB)
N/A				
N/A				
N/A				
N/A				
N/A				
N/A				

**Note:**

- (1) All Readings below 1GHz are Quasi-Peak, above are performed with peak and/or average measurements as necessary.
- (2) "N/A" remark, if no specific emissions from the EUT are recorded (ie: margin>20dB from the applicable limit) and considered that's already beyond the background noise floor.
- (3) Emission Level = Reading Level + Probe Factor + Cable Loss.

### For Frequency from 30MHz to 1GHz

Adapter model: F06US0500100A

Freq. (MHz)	Emission (dBuV/m) QP Detector	HORIZ / VERT	Limits (dBuV/m)	Margin (dB)
300.000	39.48	HORZ	46.0	-6.52
60.200	31.12	VERT	40.0	-8.88
400.040	38.31	HORZ	46.0	-7.69
156.280	30.54	VERT	43.5	-12.96
750.480	35.79	HORZ	46.0	-10.21
500.040	39.37	VERT	46.0	-6.63

Adapter model: NBS05B050100VU

Freq. (MHz)	Emission (dBuV/m) QP Detector	HORIZ / VERT	Limits (dBuV/m)	Margin (dB)
300.040	37.04	HORZ	46.0	-8.96
143.320	32.45	VERT	43.5	-11.05
450.040	44.18	HORZ	46.0	-1.82
300.040	36.59	VERT	46.0	-9.41
500.040	38.83	HORZ	46.0	-7.17
450.040	43.87	VERT	46.0	-2.13

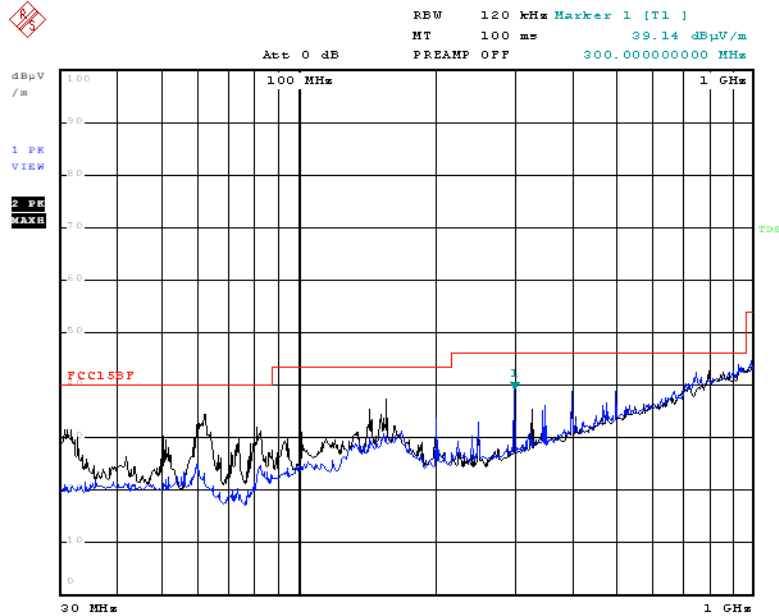
**Note:**

- (1) All Readings below 1GHz are Quasi-Peak, above are performed with peak and/or average measurements as necessary.
- (2) "N/A" remark, if no specific emissions from the EUT are recorded (ie: margin>20dB from the applicable limit) and considered that's already beyond the background noise floor.
- (3) Emission Level = Reading Level + Probe Factor + Cable Loss.

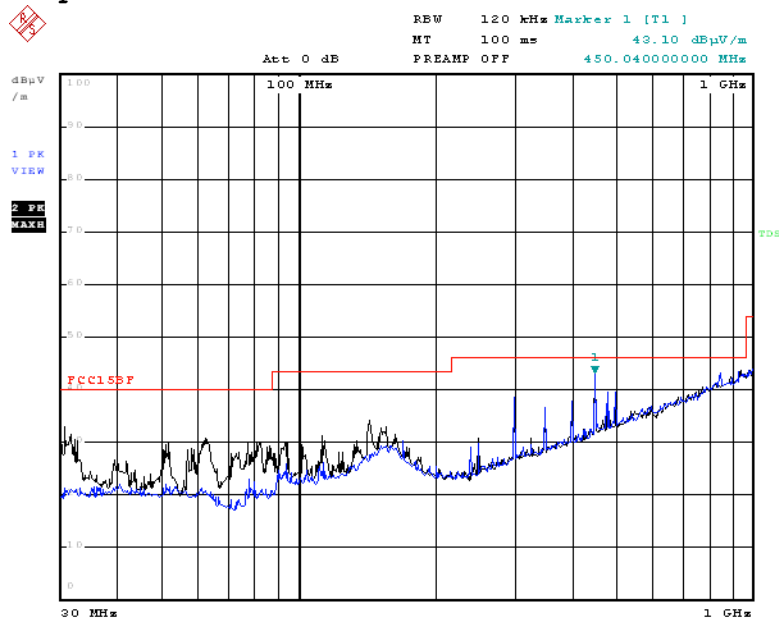
**Frequency above 1 GHz**

Freq. (MHz)	Emission (dBuV/m)		HORIZ / VERT	Limits (dBuV/m)		Margin(dB)	
	PK	AV				PK	AV
2121.200	42.53	26.16	HORZ	74	54	-31.47	-27.84
1735.600	50.11	32.21	VERT	74	54	-23.89	-21.79
2330.000	39.34	24.25	HORZ	74	54	-34.66	-29.75
3052.000	52.13	38.36	VERT	74	54	-21.87	-15.64
3857.600	59.11	40.61	HORZ	74	54	-14.89	-13.39
4433.600	55.12	39.04	VERT	74	54	-18.88	-14.96

- Note:**
- (1) All Readings below 1GHz are Quasi-Peak, above are performed with peak and/or average measurements as necessary.
  - (2) Emission Level = Reading Level + Probe Factor + Cable Loss.

**Radiated Emission****FCC 15.109****For Frequency from 30MHz to 1GHz****Adapter model: F06US0500100A**

Date: 15.DEC.2015 09:29:58

**Adapter model: NBS05B050100VU**

Date: 15.DEC.2015 09:48:23

## 6. Photo of Testing

### 6.1 Emission test view

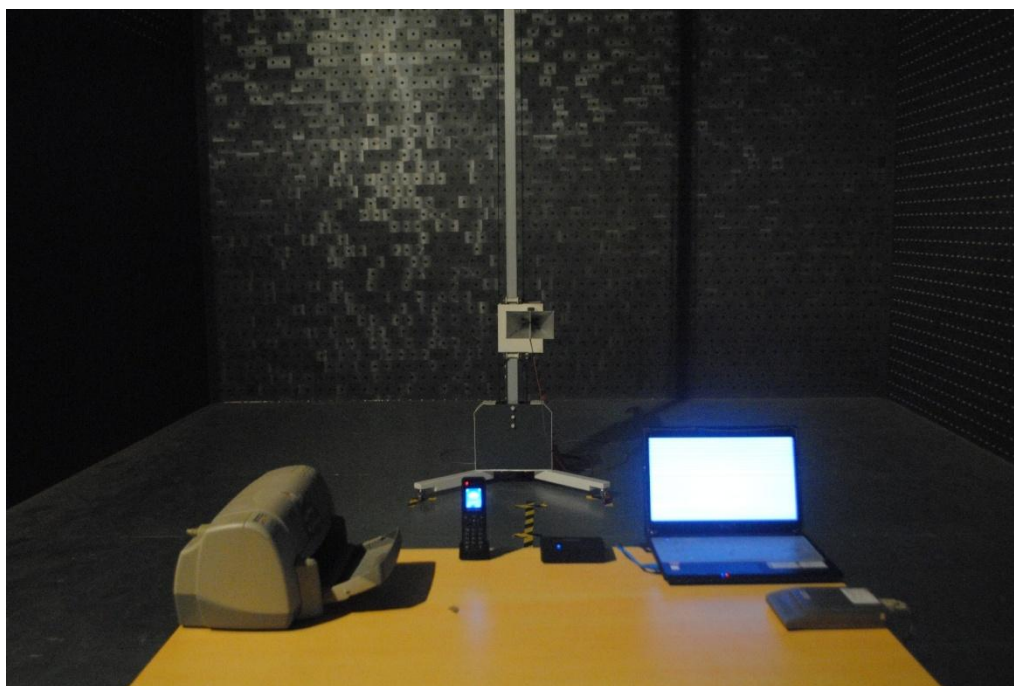
FP Conducted Emission test view



Radiated Emission test view (Frequency from 30MHz to 1GHz)



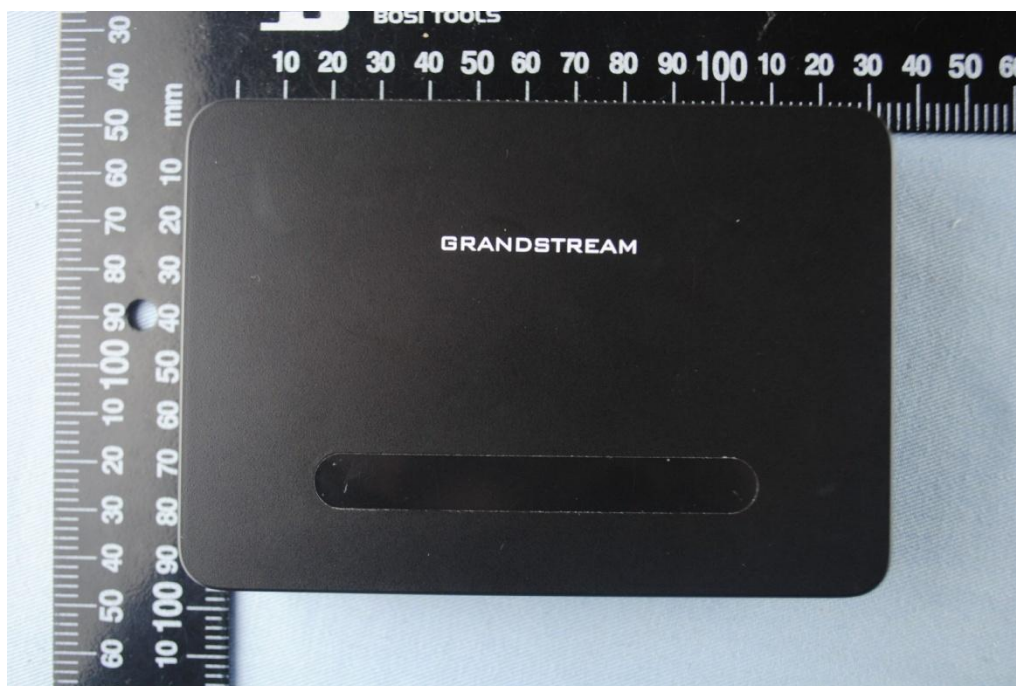
Radiated Emission test view (Frequency above 1GHz)





## 6.2 Photograph - EUT

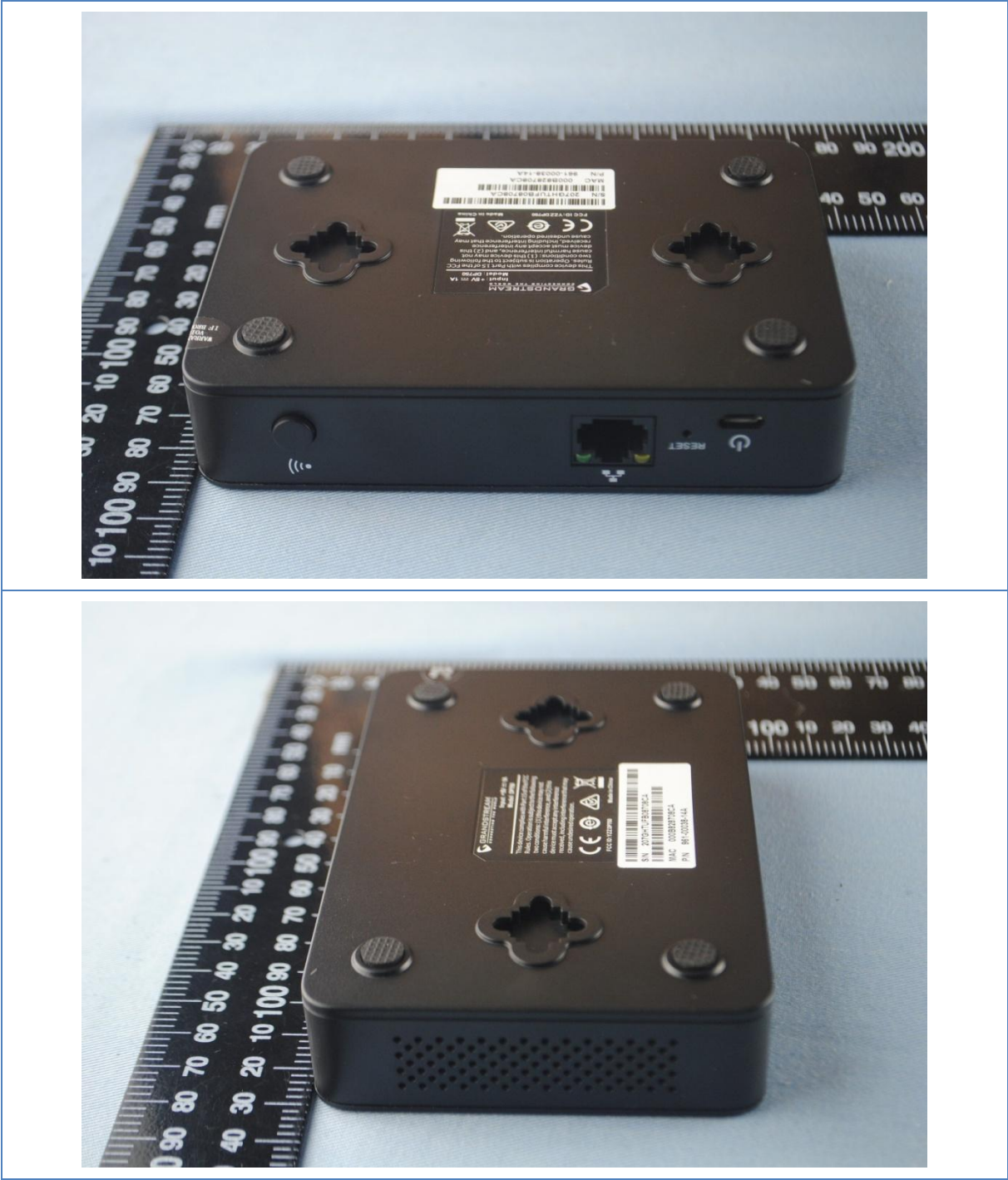
FP EUT top view





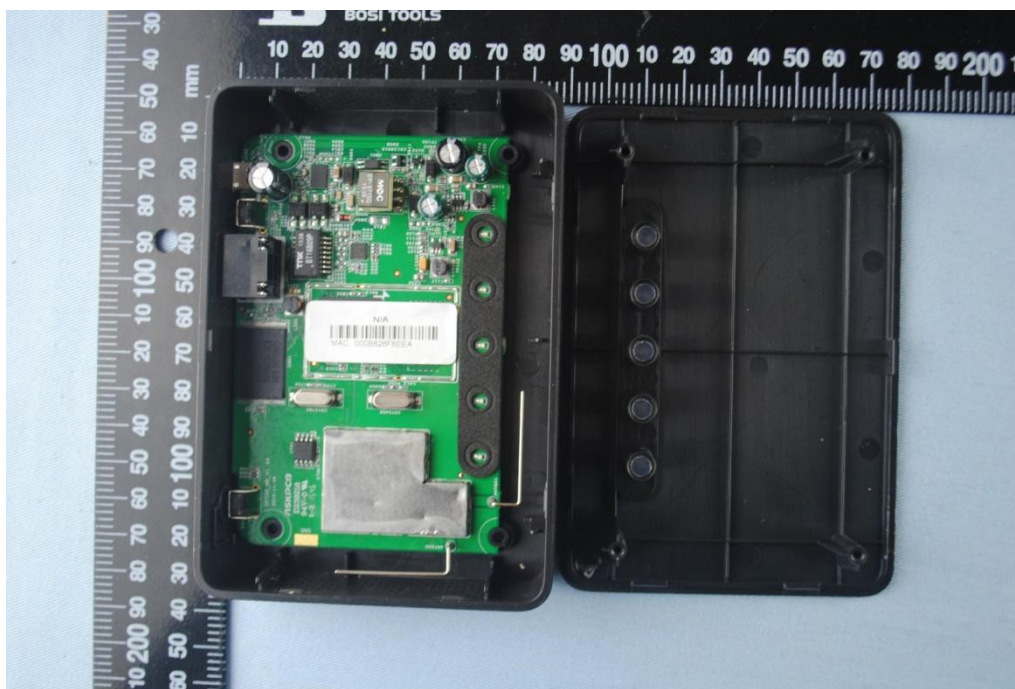
EUT bottom view



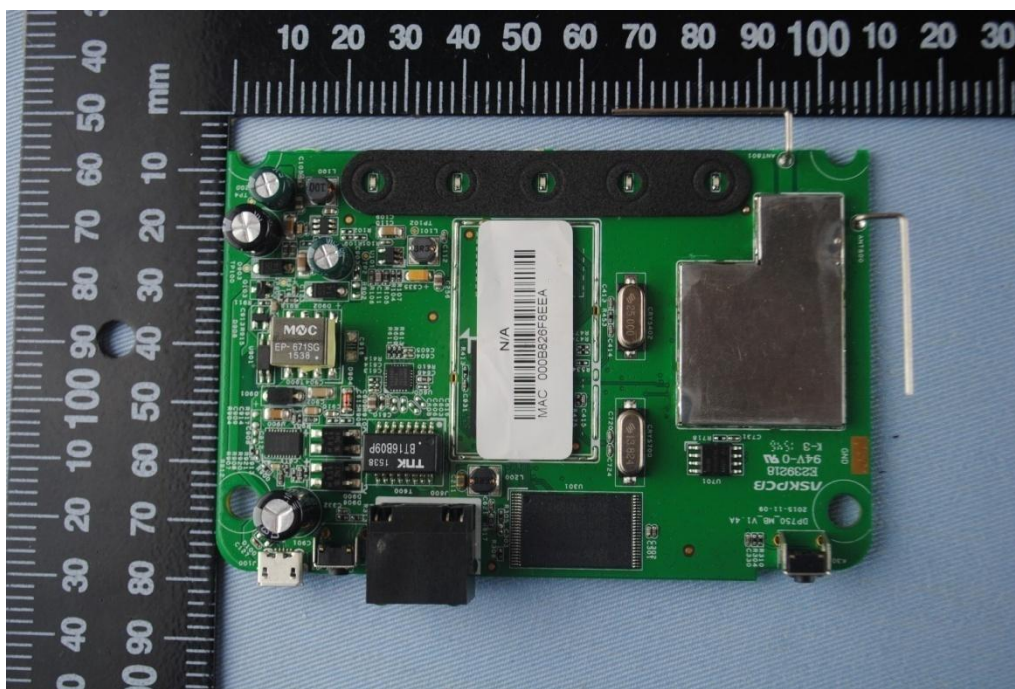




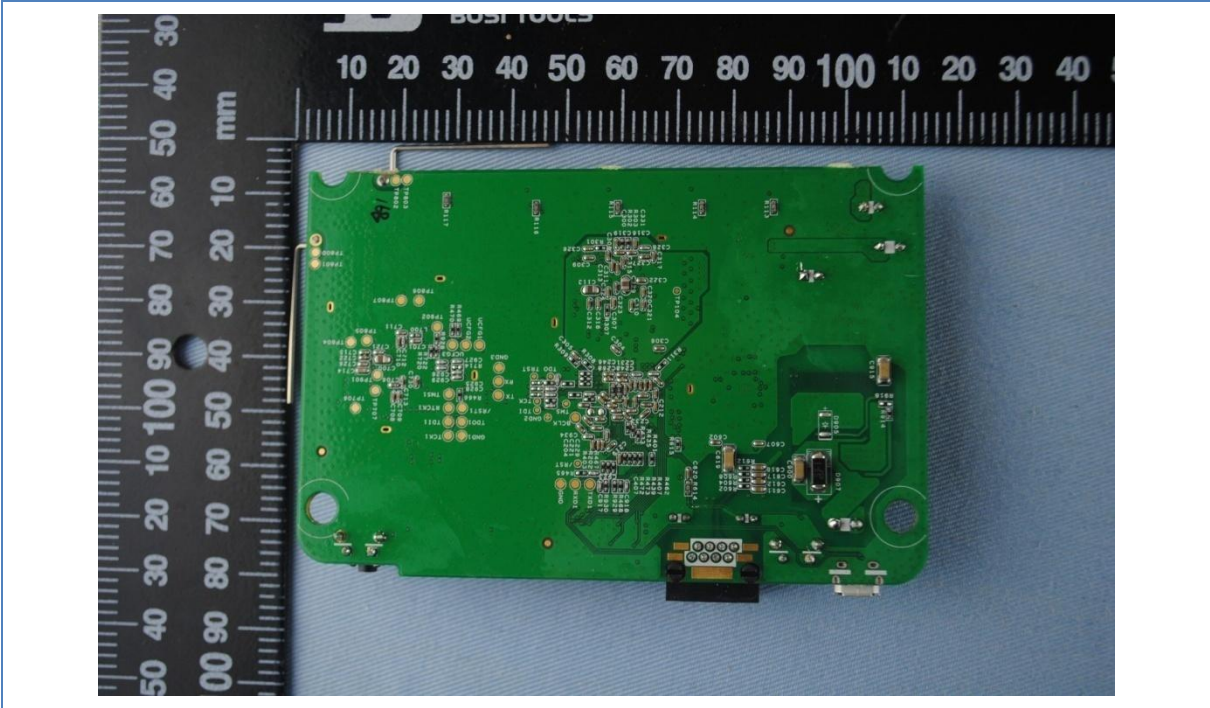
EUT inside whole view



Main board component side

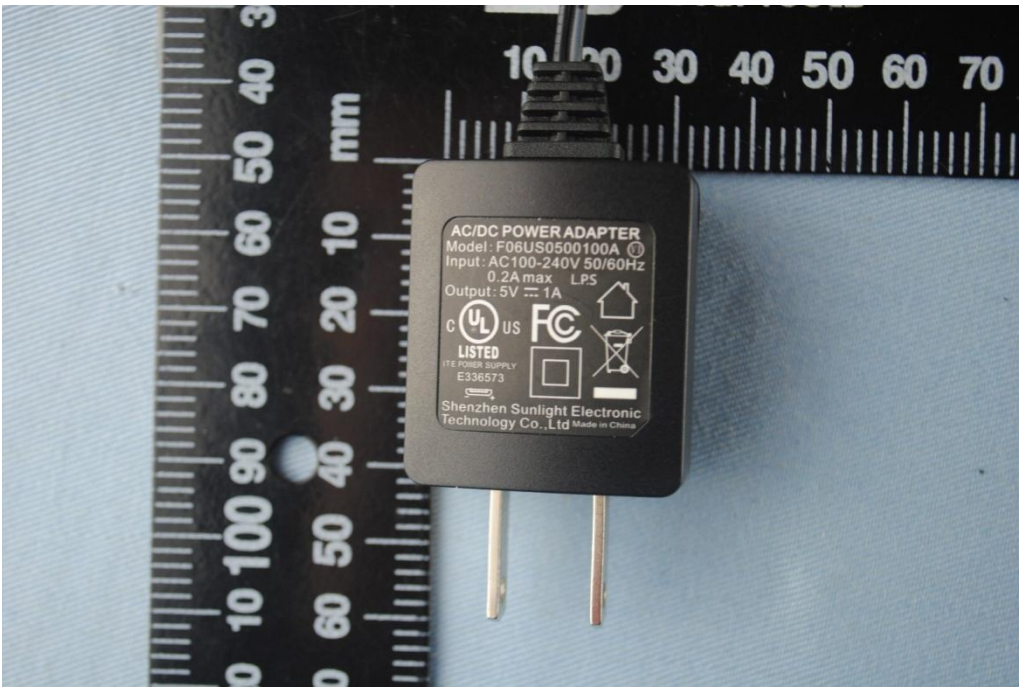


Main board solder side





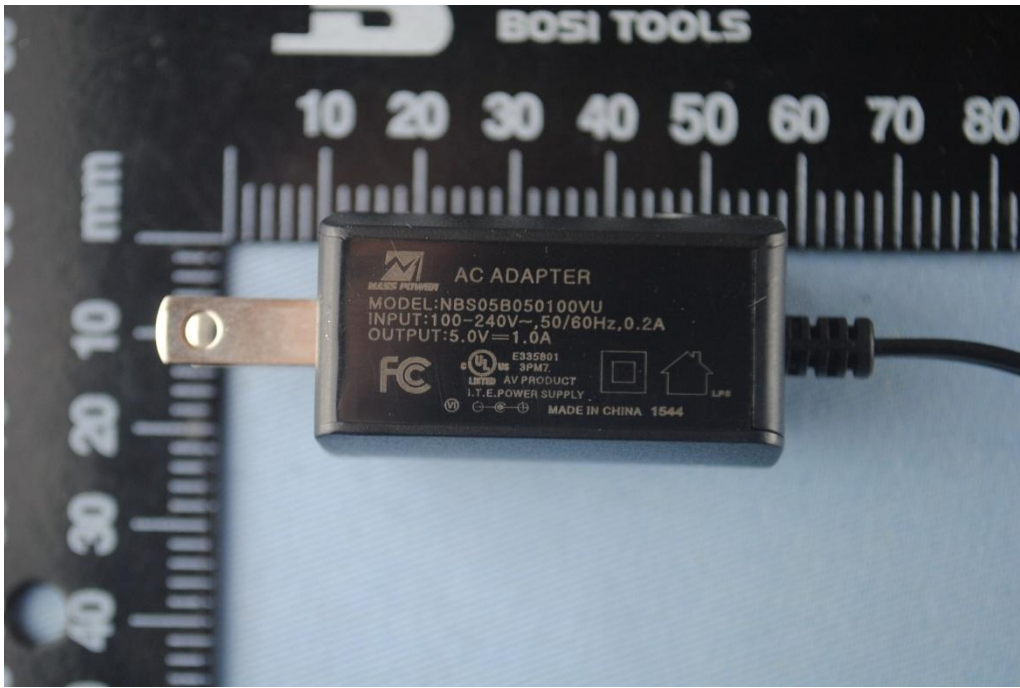
FCC Adapter top view SUNLIGHT



Adapter side view



FCC Adapter top view MASS



Adapter side view



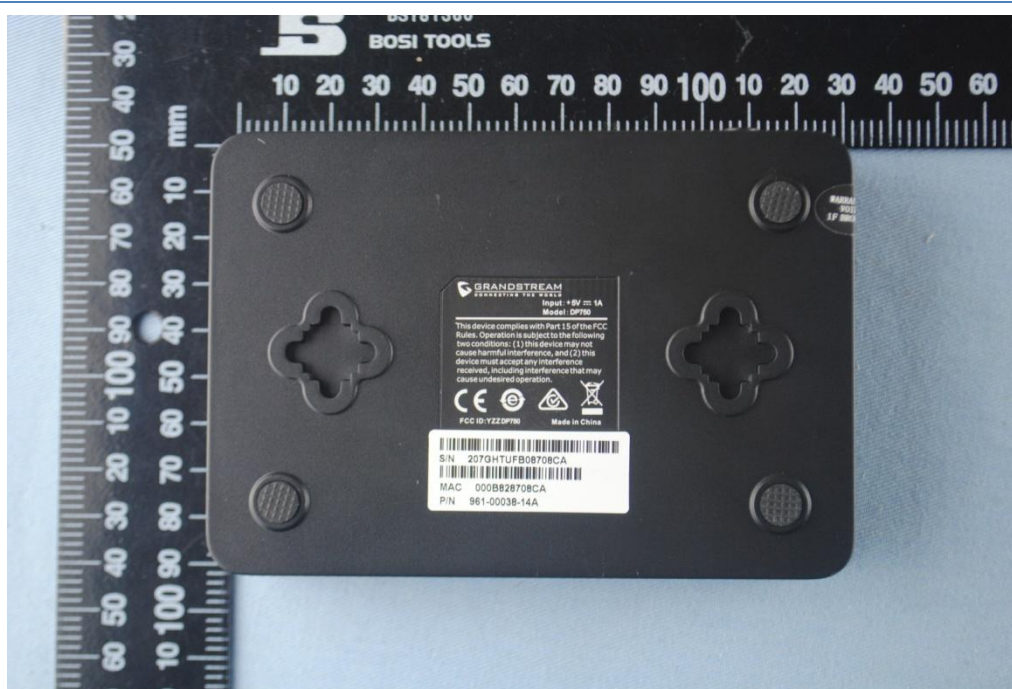
## 7. FCC ID Label



The following note shall be conspicuously placed in the users manual: “Operation is subject to the following two conditions: (1) this device may not cause interference, and (2) this device must accept any interference, including interference that may cause undesired operation of this device.”

The Label must not be a stick-on paper label. The Label on these products must be permanently affixed to the product and readily visible at the time of purchase and must last the expected lifetime of the equipment not be readily detachable.

Proposed Label Location on EUT





## 8. Test Equipment

The following test equipments were used during the radiated & conducted emission test:

Equipment/ Facilities	Manufacturer	Model #	Serial No.	Due Date
Turntable	Innco systems GmbH	CT-0801	KMO-SZ114	NCR
Antenna Tower	Innco systems GmbH	MM4000-PP	KMO-SZ115	NCR
Controller	Innco systems GmbH	CO2000	KMO-SZ116	NCR
Pre-Amplifier	Agilent	87405C	KMO-SZ155	Dec.6, 2015
Pre-Amplifier	Com-Power	PAM-840	KMO-SZ156	Dec.6, 2015
Horn Antenna	Com-Power	AH-840	KMO-SZ157	Dec.6, 2015
EMI Test Receiver	Rohde & Schwarz	ESPI7	KMO-SZ002	June 27, 2016
Spectrum Analyzer	Rohde & Schwarz	FSP40	KMO-SZ003	June 27, 2016
Signal Generator	FLUKE	PM5418+Y/C	KMO-SZ020	May 27, 2016
Loop Antenna	Rohde & Schwarz	HFH2-Z2	KMO-SZ004	August 19, 2018
Trilog-Super Broadband Antenna	SCHWARZBECK	VULB9161	KMO-SZ005	August 27, 2018
Trilog-Super Broadband Antenna	SCHWARZBECK	VULB9161	KMO-SZ006	August 19, 2018
Broad-Band Horn Antenna	SCHWARZBECK	BBHA 9120D	KMO-SZ007	August 19, 2018
Broad-Band Horn Antenna	SCHWARZBECK	BBHA 9120D	KMO-SZ008	August 19, 2018
AMN	Rohde & Schwarz	ESH3-Z5	KMO-SZ009	June 27, 2016
Pulse Limiter	SCHWARZBECK	VTSD 9561-F	KMO-SZ077	Nov.29, 2015
ISN	SCHWARZBECK	NTFM 8158 CAT3	KMO-SZ070	Nov.19, 2016
ISN	SCHWARZBECK	NTFM 8158 CAT5	KMO-SZ071	Nov.19, 2016
ISN	SCHWARZBECK	NTFM 8158 CAT6	KMO-SZ072	Nov.19, 2016
KMO Shielded Room	KMO	KMO-001	KMO-SZ036	NCR
Coaxial Cable with N-Connectors	SCHWARZBECK	AK9515H	KMO-SZ037	Sep.18, 2016
AC Power Source / Analyzer	Agilent	6813B	KMO-SZ166	July 22, 2016
Power Meter	Rohde & Schwarz	OSP-B157	KMO-HK015	Nov.6, 2016
Digital Radio Communication Tester	Rohde & Schwarz	CMD60	KMO-SZ169	April 10, 2016
Universal Radio Communication Tester	Rohde & Schwarz	CMU200	KMO-SZ170	April 10, 2016
Regulatory Test System 30 MHz to 40 GHz	Rohde & Schwarz	TS8997	KMO-HK015	Nov.6, 2016
Program Control Telephone Exchanger	Excelltel	CDX8000-M	KMO-SZ221	NCR
3m Anechoic Chamber	KMO	KMO-3AC	KMO-3AC-1	Nov.12, 2016
Temperature Chamber	TABAI	PSL-4GTW	N/A	Feb.10, 2016