

Module Instruction

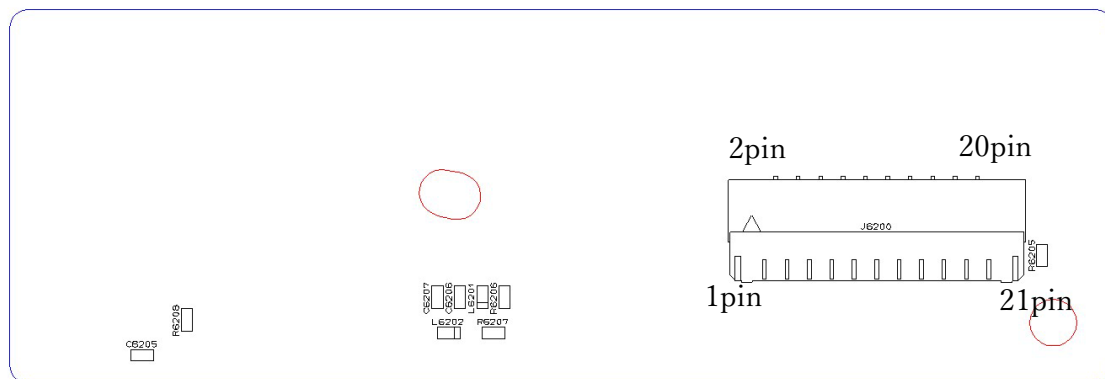
Model name: S0123WIFI-PCA

FCC ID: YSKW123

IC No.: 4763E-W123

[1.1 Pin Layout of connector]

Pin No	Pin No Terminal Name
1	GND
2	SDIO_D3
3	SDIO_CMD
4	SDIO_D2
5	SDIO_D0
6	SDIO_CLK
7	SDIO_D1
8	BT_UART_CTS_N
9	BT_UART_RTS_N
10	BT_UART_TXD
11	BT_UART_RXD
12	BT_HOST_WAKE
13	BT_REG_ON
14	LPO_IN
15	WL_HOST_WAKE
16	WL_REG_ON
17	VIO
18	VBAT
19	VBAT
20	GND
21	GND



[1.2 Operation Condition]

Operating Voltage	VBAT	DC3.8V (3.35V to 4.2V)
	VDDIO	DC1.8V (1.782V to 1.818V)
Operating Temperature		-10 deg.C to +42 deg. C

[2.1 General]

This user manual describes the integration procedure per Sec. 2.2 to 2.12 of KDB 996369 D03.

[2.2 List of applicable FCC rules]

This device complies with below part 15 of the FCC Rules.
Part 15 Subpart C

[2.3 Summarize the specific operational use conditions]

Not applicable

[2.4 Limited module procedures]

Not applicable

[2.5 Trace antenna designs]

- Trace design layout Not Applicable
- Parts list (BOM) See Parts List
- Antenna Not Applicable
- Connector Not Applicable
- Insulation requirements Not Applicable

Fine tuning of return loss etc. can be performed using a matching network.

However, it is required to check "Class1 change" and "Class2 change"

which the authorities define then.

[2.6 RF exposure considerations]

The following statements must be described on the user manual of the host device of this module;

[for FCC]

This transmitter must not be co-located or operated in conjunction with any other antenna or transmitter.

This equipment complies with FCC radiation exposure limits set forth for an uncontrolled environment and meets the FCC radio frequency (RF) Exposure Guidelines. This equipment should be installed and operated keeping the radiator at least 20cm or more away from person's body.

This equipment complies with FCC radiation exposure limits set forth for an uncontrolled environment and meets the FCC radio frequency (RF) Exposure Guidelines. This equipment should be installed and operated keeping the radiator at least 20cm or more away from person's body.

[for ISED]

This equipment complies with ISED radiation exposure limits set forth for an uncontrolled environment and meets RSS-102 of the ISED radio frequency (RF) Exposure rules as this equipment has very low levels of RF energy.

Cet équipement est conforme aux limites d'exposition aux rayonnements énoncées pour un environnement non contrôlé et respecte les règles d'exposition aux fréquences radioélectriques (RF) CNR-102 de l'ISDE puisque cet appareil a une niveau tres bas d'energie RF.

This equipment complies with ISED radiation exposure limits set forth for an uncontrolled environment and meets RSS-102 of the ISED radio frequency (RF) Exposure rules. This equipment should be installed and operated keeping the radiator at least 20cm or more away from person's body.

Cet équipement est conforme aux limites d'exposition aux rayonnements énoncées pour un environnement non contrôlé et respecte les règles d'exposition aux fréquences radioélectriques (RF) CNR-102 de l'ISDE. Cet équipement doit être installé et utilisé en gardant une distance de 20 cm ou plus entre le radiateur et le corps humain.

The equipment may only be mounted on the host under grant conditions. For use in any other

way permitted, additional evaluation, measurement and application for change to Class 2 is required.

[2.7 Antennas]

The device is designed to use the antennas listed below. Do not modify the antenna or any other part of the module. Any modifications will invalidate the modular certifications and require new approvals for the host system.

Model No.	Condition	Antenna Type	Antenna Gain
S0123WIFI-PCA	1	Inverted L	-2.4 dBi

[2.8 Label and compliance information]

Following information must be indicated on the host device of this module.

[for FCC]

Contains Transmitter Module FCC ID: YSKW123

or

Contains FCC ID: YSKW123

This device complies with part 15 of the FCC Rules. Operation is subject to the following two conditions: (1) This device may not cause harmful interference, and (2) this device must accept any interference received, including interference that may cause undesired operation.

*If it is difficult to describe this statement on the host device due to the size, please describe in the user's manual and also either describe on the device packaging or on a removable label attached to the device.

[for ISED(IC)]

Contains IC: 4763E-W123

The following statements must be described on the user manual of the host device of this module;

FCC CAUTION
Changes or modifications not expressly approved by the party responsible for compliance could void the user's authority to operate the equipment.

[2.9 Information on test modes and additional testing requirements]

Test modes should take into consideration different operational conditions for a stand-alone modular transmitter in a host, as well as for multiple simultaneously transmitting modules or other transmitters in a host product.

[2.10 Additional testing, Part 15 Subpart B disclaimer]

The modular transmitter is only FCC authorized for the specific rule parts (i.e., FCC transmitter rules) listed on the grant, and the host product manufacturer is responsible for compliance to any other FCC rules that apply to the host not covered by the modular transmitter grant of certification.

The final host product still requires Part 15 Subpart B compliance testing with the modular transmitter installed.

[2.11 Note EMI Considerations]

We recommend to use "best practice" RF design engineering testing and evaluation in case non-linear interactions generate additional non-compliant limits due to module placement to host components or properties. The host manufacturer is responsible for ensuring compliance with the applicable FCC rules for the transmitters operating individually and simultaneously. This includes compliance for the summation of all emissions from all outputs occupying the same or overlapping frequency ranges, as defined by the applicable rules.

[2.12 How to make changes]

Only the grantee is permitted to make permissive changes. Please contact us at +81-42-642-2457.