

Wireless 2.4G 

T@blet

User Manual
Model XPW-6370

Xp-pen®

Index

Usage Precautions	1.
Before Use	5.
Connections	7.
Tablet Part Name	8.
How to Setup	11.
Replacing the pen battery	13.
Replacing the pen nibs	14.
Description of tablet Hot Key Function	15.
Check Tablet	16.
Operating tablet	17.

How to connect more tablets	21.
How it work with Ink Application	25.
Info XPPEN -Write over any application	31.
Troubleshooting	32.
Product Specifications	34.

Usage Precautions

About radio waves used by this product

This product uses radio waves on the 2.4 GHz band. When using this product, a radio station license is not necessary. However, please note the following cautions.

Do not use near the following:

- Microwave ovens, industrial, scientific or medical equipment, such as pacemakers
- In-factory radio stations for mobile unit identification systems (radio stations that require a license) used in production lines of factories.
- Specified low power radio stations (radio stations that do not require a license)
- IEEE802.11g/b wireless LAN units

When this unit is used near any of the equipment mentioned above, it is possible that electric wave interference could occur.

About wireless equipment used on the 2.4 GHz band

This frequency bandwidth is the same as for industrial, scientific, and medical equipment such as microwave ovens, mobile unit identification systems (radio stations that require a license) used in factory production lines, and specified low-power radio stations (radio stations that do not require a license).

- Before using this device, check that there are no radio stations for mobile unit identification systems or specified low-power radio stations nearby.
- If this product emits radio waves which interfere with in-factory radio stations for mobile unit identification systems, cease use immediately and stop generating the radio waves. For information on countermeasures, etc. (for example, erecting partitions), contact one of our sales departments whose details are provided at the end of this manual.
- If this unit emits radio waves which interfere with specified low-power radio stations used for mobile unit identification systems, or causes similar problems, contact one of our sales departments whose details are provided at the end of this manual.

Replacing the battery

If the unit can only be used for an extremely short time or the power does not come on, the alkaline battery has reached the end of its service life.

Please purchase a new battery from your local store -- alkaline battery (AA size) or (AAA size).

About the operating environment and storage

This model is for indoor use only. It cannot be used outdoors.

- Do not place the product in a damp or dusty location, in a location exposed to the sea breeze, or in an area exposed to high vibration.

The operating environment conditions are as follows.

Temperature: 0 to 40°C

Humidity: 30 to 90% (no condensation)

- Do not store in a location exposed to direct sunlight or near to heating equipment. Discoloration, Browning or deformation or malfunctions could result.

Maintenance

Remove the connected cable and the alkaline battery, and store this product in a location that is not subject to humidity or moisture.

- Remove any dirt from the product with a soft, dry cloth.
- To remove stubborn dirt, dilute some detergent in water, dip a soft cloth in the water, and then ring it out before using it to wipe away the dirt. Do not use any volatile solvents such as thinner or benzene.

Before Use

Thank you very much for purchasing this product.

Please read this manual carefully to make suitable use of this product. Also, please be sure to refer to any supplemental information included with this product.

This product is an educational tool for making lessons using XP-PEN more enjoyable and easier to understand.

The product has various indispensable features for teaching more effective lessons.

Because you can draw directly onto the computer or any projector image, you can directly communicate the important points that cannot be explained fully just by display.

The USB wireless communication, you are free to draw up to 15 meters away from the computer.

System requirements

Computer model: IBM PC/AT compatible

Operating system: Microsoft Windows XP Home Edition / Professional SP2 (32bit)

Microsoft Windows Vista Home Basic / Home Premium / Business /

Enterprise / Ultimate SP1 (32bit)

Microsoft Windows 7 Starter / Home Premium / Professional / Ultimate (32bit)

CPU: Intel Core 2 Duo 2 GHz equivalent or higher

Memory: 2 GB or higher

Hard disk: 1 GB or higher

Video Board: Correspond to Microsoft DirectX 9.0c

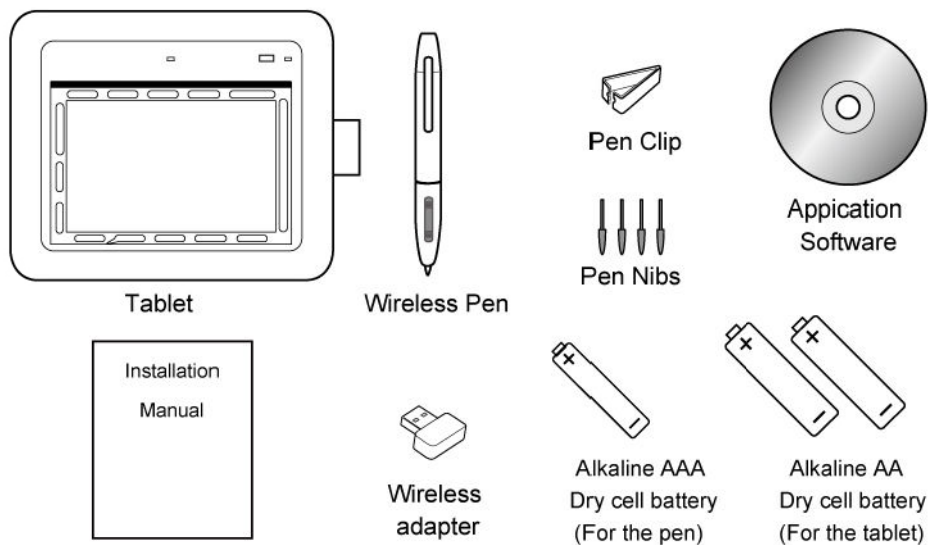
USB: USB 2.0

Caution:

- If a sound device cannot be used, some of the functions may not operate.
- Operation is not guaranteed for all computer environments.

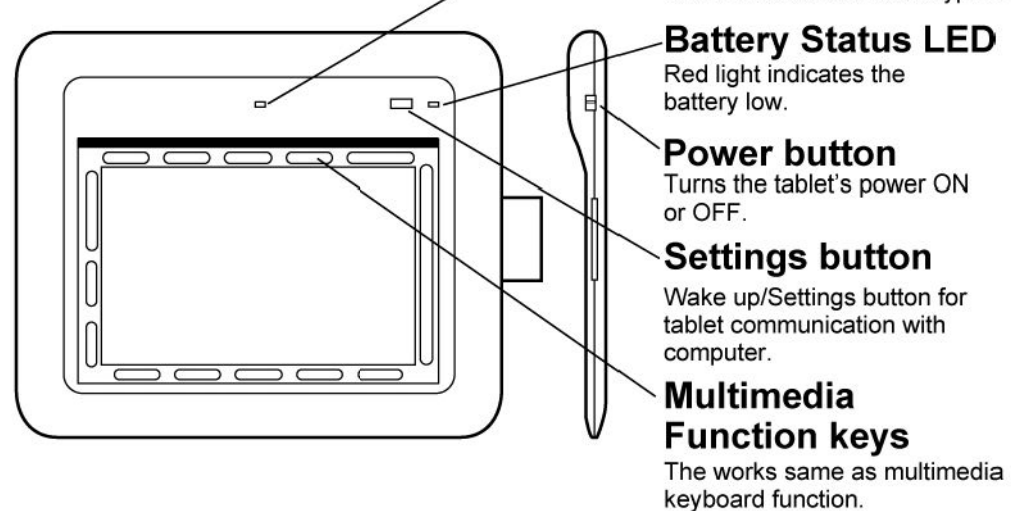
Connections

The product's package has the following contents. Contact your dealer if any of the following items are not included in the package you purchased.



Tablet Part Name

Tablet



Tablet base

Power port

Connect the computer for the tablet's power via a USB cable.

Battery box

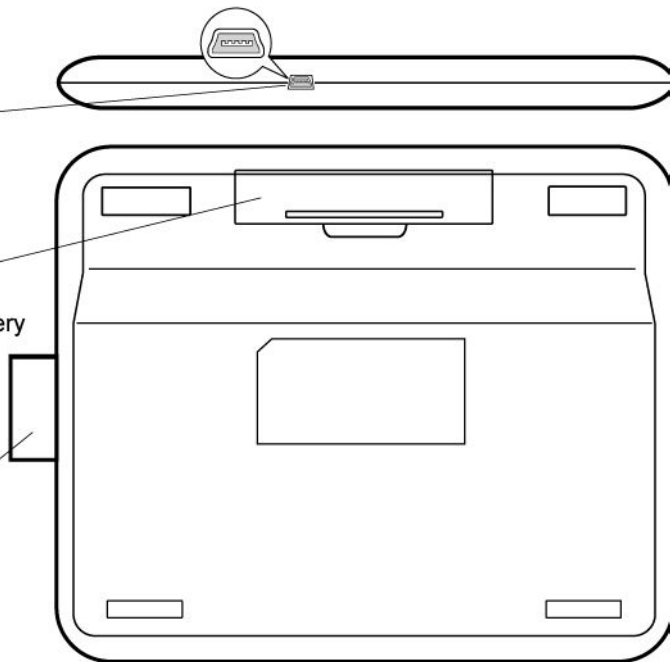
Only install an alkaline battery made for this product.

Caution:

Only open when absolutely necessary.

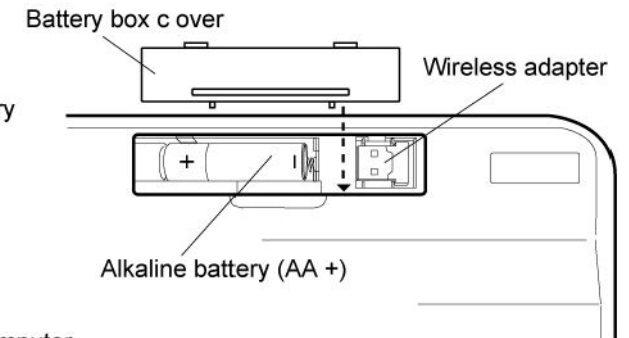
Pen Holds

Holds the pen.



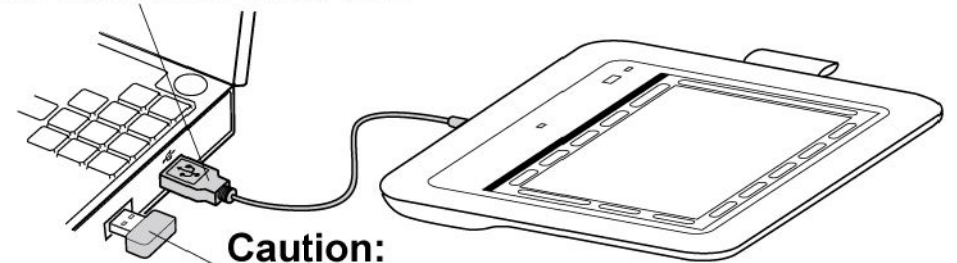
Change battery

Install the supplied alkaline battery in the battery box on the base of the tablet.



Battery low

When battery low connect the computer and the tablet via a USB cable for power.

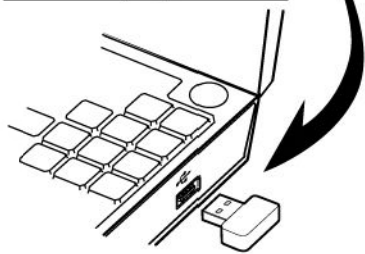
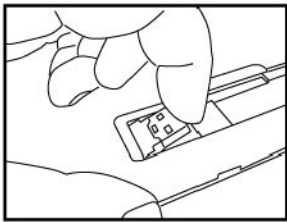


Caution:

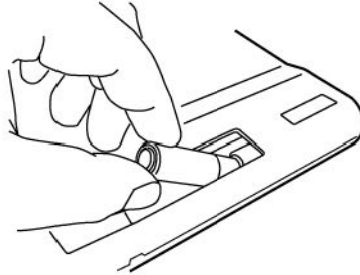
Do not remove wireless adapter.

How to Setup :

- ① Connect the wireless adapter to the computer's USB port form box on the base of the tablet.



- ② Install the supplied two alkaline (AA+) battery in the battery box on the base of the tablet.



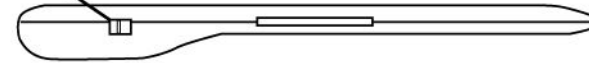
Caution:

Note the insertion direction of the alkaline battery. Only open the battery box when necessary.

Remove the dry cell battery if the tablet or pen will not be used for a long time.

Turn on the tablet.

- ③ When you switch the power button on right side of tablet.

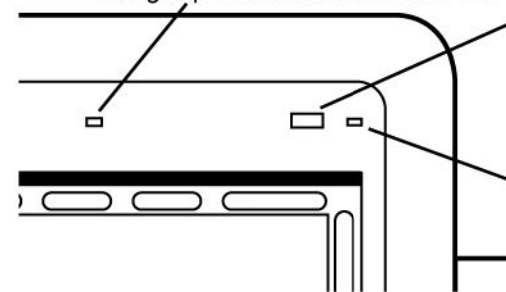


ON ← → OFF

Caution:

Please to follow direction to turn ON or OFF tablet's power.

- ③ The "Status LED" flashes at high speed. When Power turn "ON"



- ④ Press "Wake up/Wireless settings" button for tablet communication with computer.

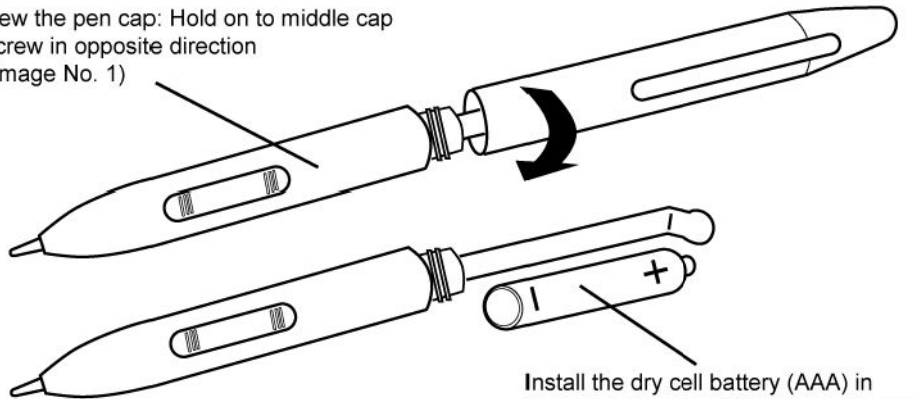
** The "Status LED" on the tablet is on flashes repeatedly. That tablet is communication with computer.

** If the Power LED is lit (RED), there is not enough charge in the battery. Change the battery.

Replacing the pen battery

This occurs when the batteries run low and need replacing. Remove the top of the pen and replace the batteries with fresh ones, negative pole first (as shown). Replace the pen top.

Unscrew the pen cap: Hold on to middle cap and screw in opposite direction (See image No. 1)

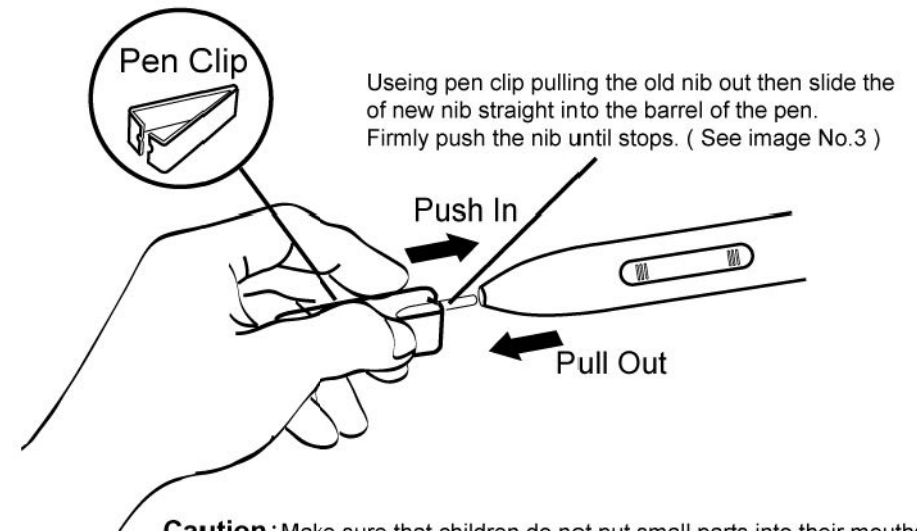


Install the dry cell battery (AAA) in the pen before use. (See image No. 2)

**** Pay attention to the polarity (+/-) of the dry cell battery.**

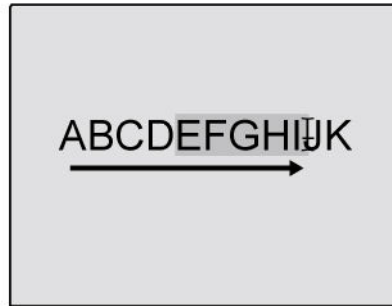
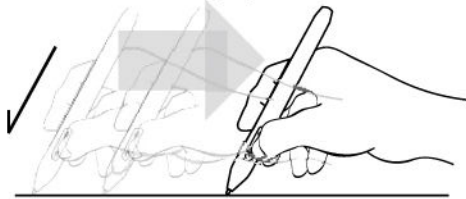
Replacing the pen nibs

The pen tip (nib) will wear with normal use. Excessive pressures will cause it to wear sooner. Replace the nib when it gets too short.



Select Text

To select text within a document, move the screen cursor to the beginning of a text line, then drag the pen across the tablet to highlight the text.



Pen Pressures

Select a pressures-sensitive tool from application tool palette. The draw along the surface of tablet while applying various amounts of pressures downward on the tip of the pen. Press the lower pen switch hard for thick lines or dense color, and press gently for thin line or softer color.



⚠ Caution:

Tablet pen pressure follow Microsoft technology. It work base on Win 7, Vista's application such as paint, Office 2007 and other support tablet pc software (e.g ArtRage, Autodesk SketchBook Pro)

ArtRage

Check link for product information

<http://www.artrage.com>

Autodesk SketchBook Pro

Check link for product information

<http://usa.autodesk.com>

How to connect more tablets:

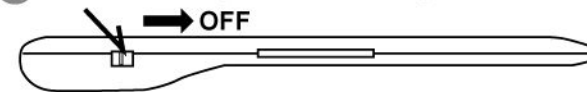
- **First step:** To make sure all of tablets power is turn off.
- **Second step:** Switch “ OFF” number 1 tablet’s power.
- **Third step:** Unplug wireless adapter within 2 or 3 seconds then plug with computer again.
- **Fourt:** Switch “ ON “ the number 2 table’s power and press the “ Wireless settings button” on the front tablet.
- **Fifth step:** Make sure the “ Status LED ” flashes at high speed.
- **Sixth step:** Check move the pen on the tablet’s operating area, the cursor on computer screen moves and the operation status is active.
- **Seventh step:** Switch” OFF “ the number 2 tablet’s power then repeatedly s number 3, 4, 5....more!



Caution: When finish setting tablet must switch off power immediately.

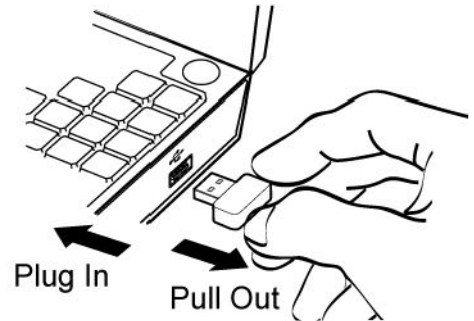
Turn “ OFF ” all the tablet’s Power.

- ① WTo switch the power button on right side of tablet.



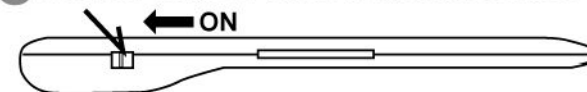
Unplug wireless adapter

- ② Unplug wireless adapter within 2 or 3 seconds then plug with computer again.



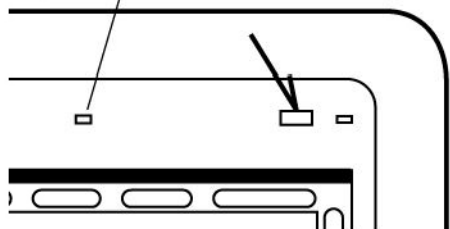
Turn “ ON ” all the tablet’s Power.

- ③ To switch the power button on right side of tablet.

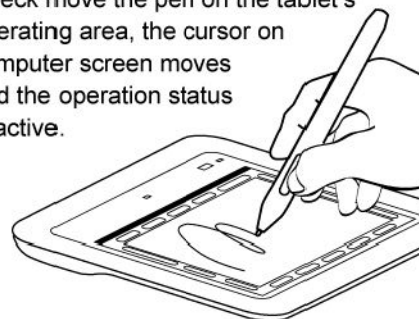


- 4 Press "Wake up/Wireless settings" button for tablet communication with computer.

** The "Status LED" on the tablet is on flashes repeatedly. That tablet is communication with computer.

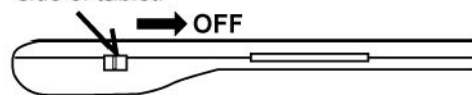


- 5 Check move the pen on the tablet's operating area, the cursor on computer screen moves and the operation status is active.

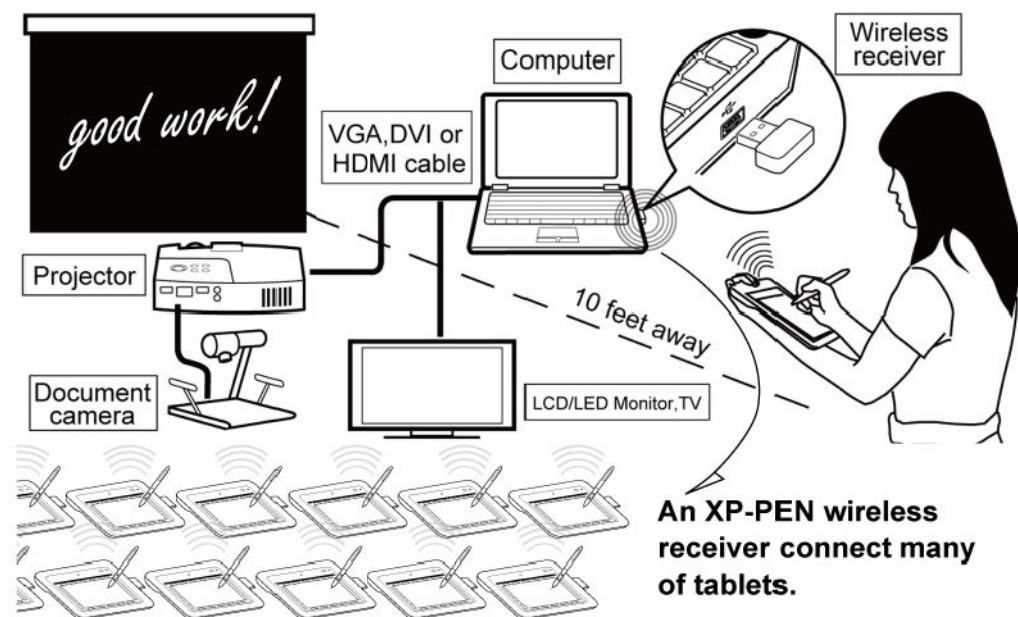


Turn "OFF" all the tablet's Power.

- 6 To switch the power button on right side of tablet.



How does it work

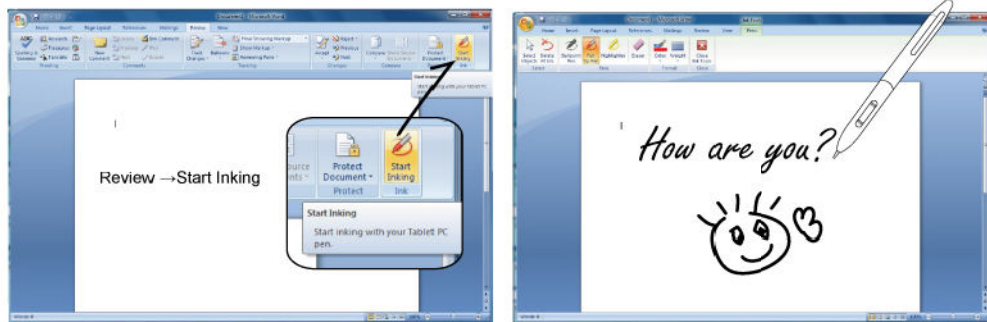


Note: Using tablet one by one. It can't be use all tablet at same time with one computer.

How it work with Ink features

The following document describes Windows Vista,Win 7 Ink application and the usage with Pegasus Digital Tablet Pen. To use Vista,Win7 Ink features, your Tablet Pen must be installed.

Once your Tablet Pen is plugged into a USB port, Vista or Win 7 will enable its Ink features. The 'Input Panel' will be enabled, as well as Microsoft Office Ink features. You can use all of these applications with Pegasus Tablet Pen.



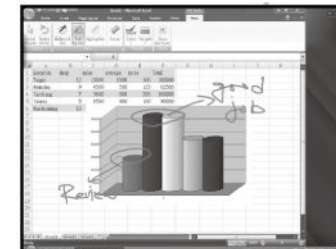
Caution:

Office 2007 Word, Excel, and Power Point
Path: Review → Start Inking

Office 2007 Out Look
Path: Message → Start Inking

Pen feature is build-in at Office 2007 Word, Excel, Outlook and Power Point, You can easily make any inking with your office documents or a handwriting letter directly in Outlook.

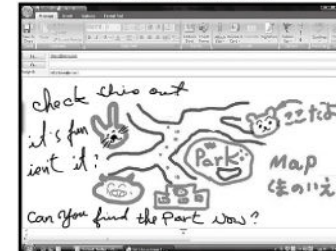
Microsoft® Excel 2007



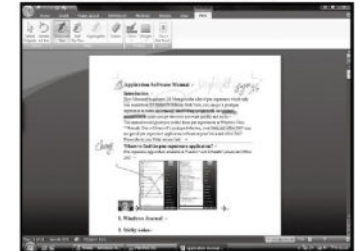
Microsoft® Power Point 2007



Microsoft® Outlook 2007

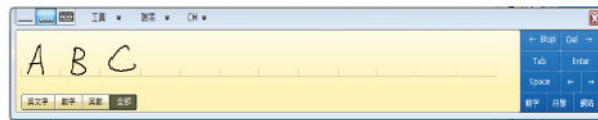
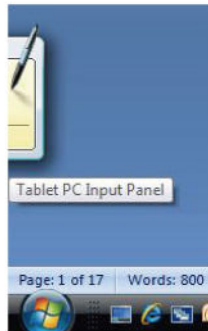


Microsoft® Word 2007



Using Input Panel in Windows Vista

The following section describes the usage of Windows Vista input panel with Pegasus Tablet Pen. Once you have your Tablet Pen plugged into your PC, Windows Vista 'Tablet PC Input Panel' is docked on the left side of the screen by default



Note: You can change the initial location of the 'Tablet PC Input Panel' by dragging it to any spot on the left or right of the screen.

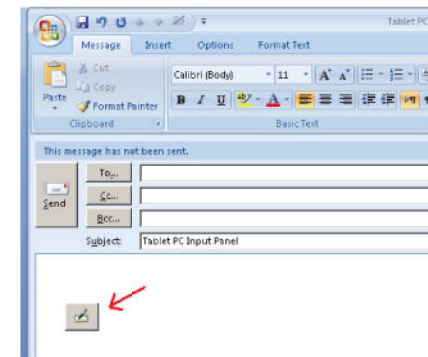
Note: This feature is only supported in the following Vista editions: Windows Vista Home Premium, Windows Vista Business, Windows Vista Enterprise,

To use the 'Tablet PC Input Panel', place your cursor in a data entry field in an application, such as an Outlook Email message, a word processor, spreadsheet or Web browser.

A small 'Floating' Icon of the Input panel will appear.



To start using it, simply click it using your Pen.

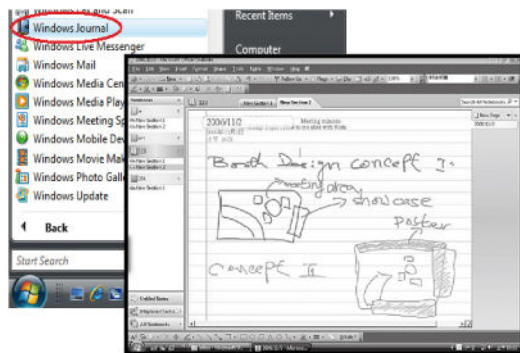


Entering text

The 'Tablet PC Input' Panel is divided into three sections, accessible by selecting the tabs simulating a Writing Pad, a slotted Character Pad and a Keyboard. Freeform writing is used on the Writing Pad, which shows the recognized text on the line directly below. Characters are entered on the Character Pad, which also shows the recognized text. The on-screen Keyboard simulates a standard QWERTY layout.

Using Tablet Pen in Windows Journal

Use your Tablet Pen to Ink inside any Journal file. You can use your Tablet Pen as a mouse, to use any of the Journal tools, such as Lasso, rectangle, colors and more.



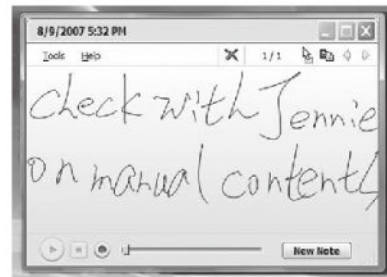
** Journal page showing sketching and annotation

Use your Tablet Pen to Ink on the page, and select any of the Journal tools

Using Ink in Sticky Notes

You can use the Sticky Notes accessory to write and store short notes, phone numbers, and other reminders.

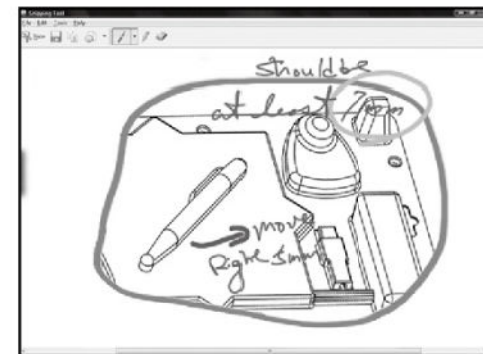
You can place sticky notes directly on your desktop as quick reminders or in any OLE-enabled program, such as Word, to add electronic comments or reminders to your documents.



Using Ink in Windows Snipping Tool

Use your Tablet Pen to Ink inside any capture done by the Vista, Win 7 Snipping Tool.

Open the Snipping tool, capture anything you need. Now use your Pen to Ink/Annotate on top of the capture.



Using Ink with MSN

You can use your Tablet Pen as a mouse, to use any of Messenger tool. Also can sketching and annotation on Messenger. That is very easy and fun to communicate with your family and friend.

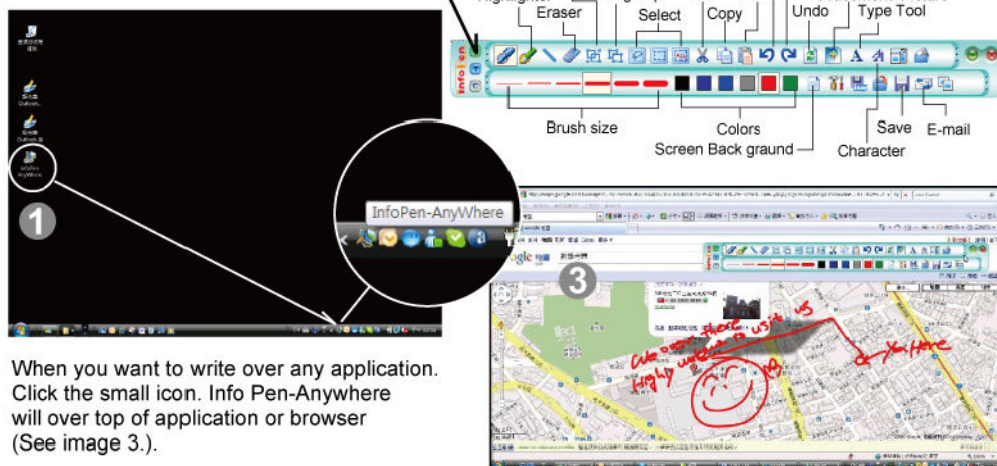


Write over any application.

How it work with Info-XPEN software

Please install Info-XPEN software before using. First step to click " Info Pen - AnyWhere " icon on computer then will have small icon on bottun of screen side(See image 1.).

2 Info-XPEN Tool



When you want to write over any application. Click the small icon. Info Pen-Anywhere will over top of application or browser (See image 3.).

Troubleshooting

Tablet Power does not turn ON	
Is the battery installed	Check that the batteries is inserted correctly
Cannot use the tablet / The cursor does not move	
Is the wireless adapter connected to the computer?	Check that the wireless adapter is connected to the computer being used. Caution: Connect the wireless adapter directly to the USB port on the computer. It may not operate correctly if a USB hub is used.
Is the pen's dry cell battery AAA or AA size?	The pen's dry cell battery AAA size. The tablet's dry cell battery AA size.
Communication is not possible.	If wireless devices or electronic equipment are used near the product, communication between the tablet and wireless adapter may be unstable due to interference from radio waves. Do not use equipment that causes interference when using this product.

LED status OFF	30 mints not using tablet will tablet will automatically enter to sleep mode. Press “ Wake up/Settings ” button for tablet communication with computer again.
When you turn on your computer, the tablet is not on.	Verify the USB connector of the tablet is properly connected to an available USB port. Make sure the USB port is available.
Is third-party tablet software installed?	If third-party tablet software is operating, it may conflict with the operations of this product. Do not operate third-party tablet software while using this product.

Product Specifications

Model Name	XPW-6370
Active Area	6" X 3.7" (152.4mmX94mm)
Resolution	2000 LPI (Min)
Position Accuracy	0.25 mm (0.01 inch)
Report Rate	At least 160 rps
Interface	USB Wireless
Pen Pressure Level	1024 Level
Wireless Band Used	2.4 GHz
Communication Range	Approx. 15 m (differs depending on the usage conditions)
Tablet Power Supply	Two AA size alkaline battery

Pen Power Supply	One AAA size alkaline battery
Continuous Operation Time	Approx. 40 hours (differs depending on the usage conditions)
Auto Sleep Mode	Approx. 30 minute
Consumption Current	When using USB 5 V 500 mA
Computer Model	IBM compatible computer equipped with a standard USB port . (Operation is not guaranteed for all computer environments.)
Compatible OS	Windows 7 / Vista / XP
Dimensions	240 X 210 X 19mm
Product Weight	360g(ref)

Federal Communication Commission Interference Statement

This equipment has been tested and found to comply with the limits for a Class B digital device, pursuant to Part 15 of the FCC Rules. These limits are designed to provide reasonable protection against harmful interference in a residential installation.

This equipment generates, uses and can radiate radio frequency energy and, if not installed and used in accordance with the instructions, may cause harmful interference to radio communications. However, there is no guarantee that interference will not occur in a particular installation. If this equipment does cause harmful interference to radio or television reception, which can be determined by turning the equipment off and on, the user is encouraged to try to correct the interference by one of the following measures:

- . Reorient or relocate the receiving antenna.
- . Increase the separation between the equipment and receiver.
- . Connect the equipment into an outlet on a circuit different from that to which the receiver is connected.
- . Consult the dealer or an experienced radio/TV technician for help.

FCC Caution: To assure continued compliance, any changes or modifications not expressly approved by the party responsible for compliance could void the user's authority to operate this equipment. (Example - use only shielded interface cables when connecting to computer or peripheral devices).

FCC Radiation Exposure Statement

This transmitter must not be co-located or operating in conjunction with any other antenna or transmitter.