

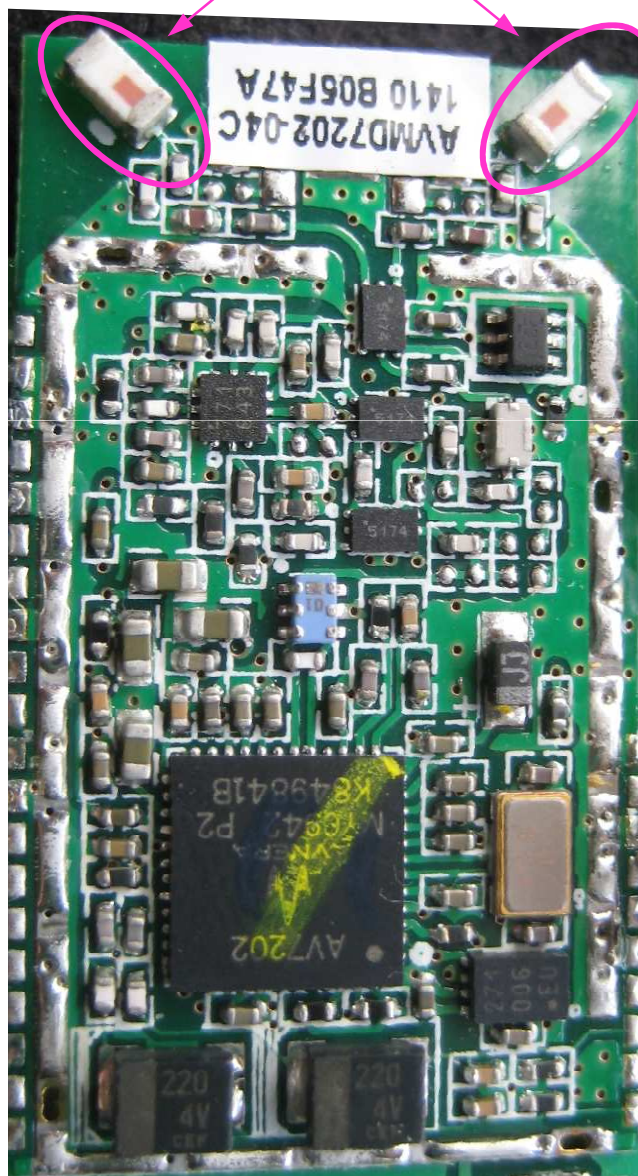
## **Antenna information for Avnera AVMD7202 wireless audio transceiver product**

The AVMD7202 transceiver uses a pair of permanently mounted Johanson 2450AT18A100 ceramic chip antennas as shown in the photo on Slide 2, below.

The antennas are soldered to the transceiver printed circuit board, which circuit board is later mated to the OEM system board buried within the plastic enclosure; as such the antennas are not accessible to the end user.

## Avnera AVMD7202 module showing permanent antenna placement

Soldered-in-place “Chip” antennas:  
Johanson P/N 2450AT18A100 (2 places) \*



\* Peak gain = +0.5dBi, average gain = -0.5dBi