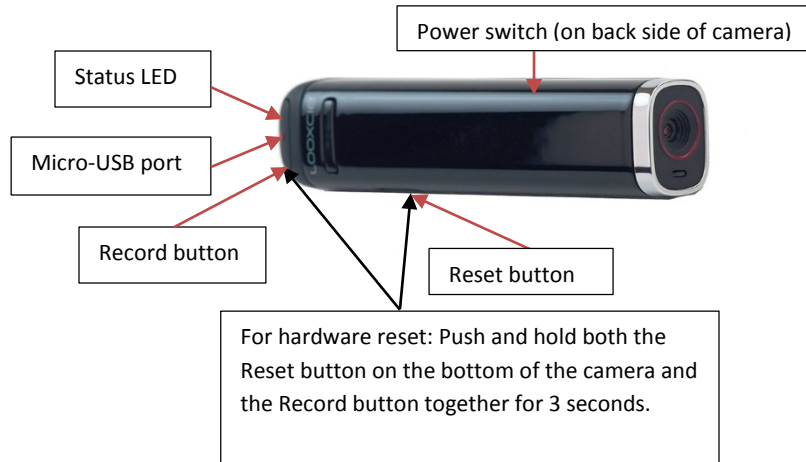


Lookout User's Guide

The Looxcie Lookout is a lightweight, wearable camera that allows you to stream live video from your point of view without interfering with your ability to perform your work. The Lookout should already be preconfigured to use a WiFi connection to stream your live video to a secure Vidcie domain for remote viewing by your colleagues. (If not, have your Vidcie tech use the Vidcie Cam Configurator tool to configure your camera for your WiFi.)



This guide explains how to:

- Charge the Looxcie Lookout battery.
- Turn the camera on and off.
- Understand the LED status light.
- Record on-camera (if that functionality is enabled for your Lookout).
- Troubleshoot the camera.

Charging the Lookout Battery

Full charge the Lookout battery before first use.

To charge the battery:

1. Verify the power switch is OFF (switch is pushed toward rear of camera)
2. Plug the USB cable into the camera's micro-USB port.
3. Plug the other end of the cable into a USB port on your computer or other USB charger.

Average charge time is 3-4 hours. The camera's status light flashes green while charging. It turns solid green when the battery is fully charged.

Turning the Camera On and Off

To turn the camera on:

- Slide the Power switch, located on the side of the camera, toward the front of the camera.

When you turn the camera on, it immediately seeks a WiFi connection and begins streaming live video to your secure server.

To turn the camera off:

- Slide the Power switch toward the rear of the camera, away from the lens.

Reading the LED Status Light

The Looxcie Lookout has a single LED status light, located at the rear of the camera beside the micro-USB port. Depending on what state the camera is in, the status light has different meanings:

POWER TOGGLE ON	
Blinking GREEN	Booting, seeking WiFi connection
Solid GREEN	Connected to WiFi for streaming video
ON USB CABLE	
Blinking GREEN	Battery is charging
Solid GREEN	Battery is fully charged

Recording On-Camera

Your Vidcie domain supervisor may have optionally enabled on-camera recording for your Looxcie Lookout. If this feature is enabled, the Lookout can both stream live video and record video locally for later download to a computer. Your Vidcie domain supervisor should let you know if this feature is enabled for your camera.

To record on-camera:

Push the *Record* button, the button with the dot on it, located at the rear edge of the camera, next to the micro-USB port. **To stop recording:**

- Push the *Record* button again.

Troubleshooting

My camera does not turn on.

Press and briefly hold the Record and Reset buttons at the same time. If that does not work, charge the camera's battery.

My camera does not connect to WiFi (the LED status light continues to blink GREEN).

Check to see if your WiFi network is on. If it is, you may try powering the WiFi device off and on again to reset it. If your camera still does not connect, make sure you are within range of your WiFi device. If you are within range, but the camera still does not connect, have your Vidcie tech check your camera's configuration.

How do I tell if I'm streaming live video successfully?

If your Vidcie domain supervisor gives you video viewing privileges, you can log in to your Vidcie portal from any web browser with your username and password to check your video stream. For more information, see the *Vidcie Viewer's Guide*.

My camera is not working properly or Windows does not recognize my camera when it's connected via USB.

Try a manual hardware reset. Hold down both the Record button (next to the USB port) and the Reset button (located on the side of the camera) for 3 seconds.

FCC Statement

This device complies with part 15 of the FCC Rules. Operation is subject to the following two conditions: (1) This device may not cause harmful interference, and (2) this device must accept any interference received, including interference that may cause undesired operation.

This equipment has been tested and found to comply with the limits for a Class B digital device, pursuant to part 15 of the FCC Rules. These limits are designed to provide reasonable protection against harmful interference in a residential installation. This equipment generates, uses and can radiate radio frequency energy and, if not installed and used in accordance with the instructions, may cause harmful interference to radio communications. However, there is no guarantee that interference will not occur in a particular installation. If this equipment does cause harmful interference to radio or television reception, which can be determined by turning the equipment off and on, the user is encourage to try to correct the interference by one or more of the following measures:

--Reorient or relocate the receiving antenna.

--Increase the separation between equipment and receiver.

--Connect the equipment into an outlet on a circuit different from that to which the receiver is connected.

--Consult the dealer or an experienced radio/TV technician for help.

The FCC requires the user to be notified that any changes or modifications made to this device that are not expressly approved by Looxcie, Inc., may void the user's authority to operate the equipment.