
Antenna Specification

Manufacture: GUANGDONG ROULE ELECTRONICS CO. , LTD

Product Name: RL-WS200 Antenna

Antenna Type: PCB

Test Date: 2023.09.07

Content

1.General Description	3
2.Test Configurations	4
2.1 Test Environment.....	4
2.2 Test Equipment.....	4
2.3 Test Principle	4
3.Test Results	5
3.1 Gain and Efficiency	5
3.2 Radiation Pattern	5
4.Antenna Dimensions	6
5.EUT Photo	7
6.Test Setup Photo	7

1.General Description

Manufacturer	GUANGDONG ROULE ELECTRONICS CO., LTD
Address	No. 12, Pingdong 3rd Road, Nanping Science and Technology Park, Zhuhai City, Guangdong Province
Test Location	Room 201, Building 1, No. 12, Pingdong 3rd Road, Nanping Science and Technology Park, Zhuhai City, Guangdong Province
Product Name	RL-WS200 Antenna
Product model	RL-WS200
Antenna Type	PCB Antenna
Test Items	Gain; Efficiency; Radiation Pattern
Test Frequency	433MHz
Test Standard	ANSI/IEEE Std 149-1979

2. Test Configurations

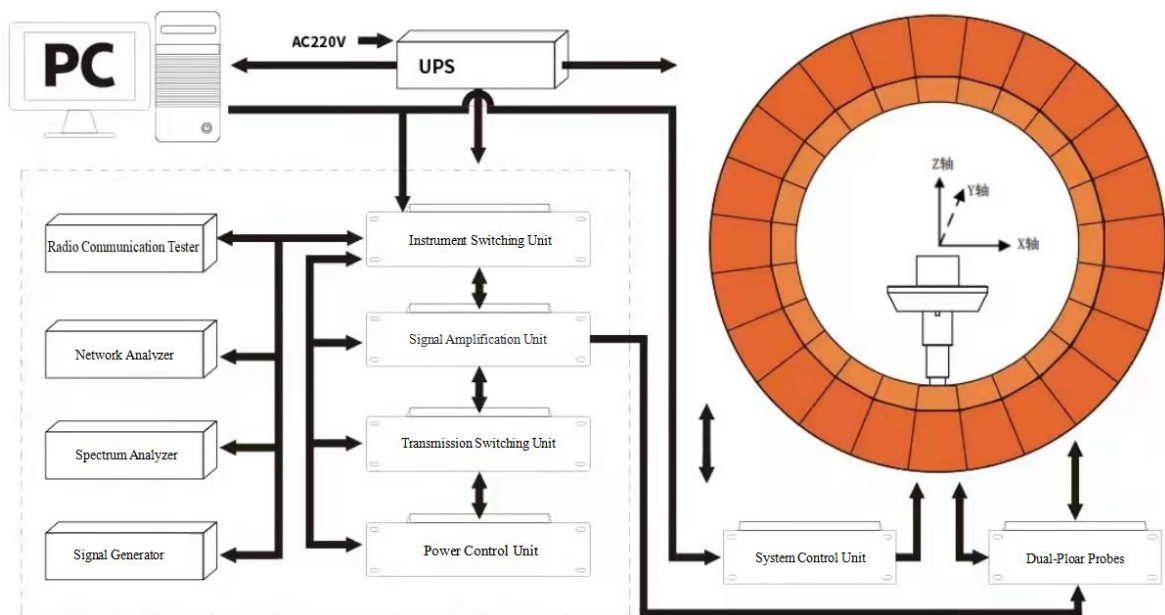
2.1 Test Environment

Temperature (°C)	25
Humidity (%RH)	60
Atmospheric Pressure (kPa)	100.5

2.2 Test Equipment

Test System	TEM 24 Multi-probe Microwave Chamber
Test Instrument	Agilent E5071B

2.3 Test Principle

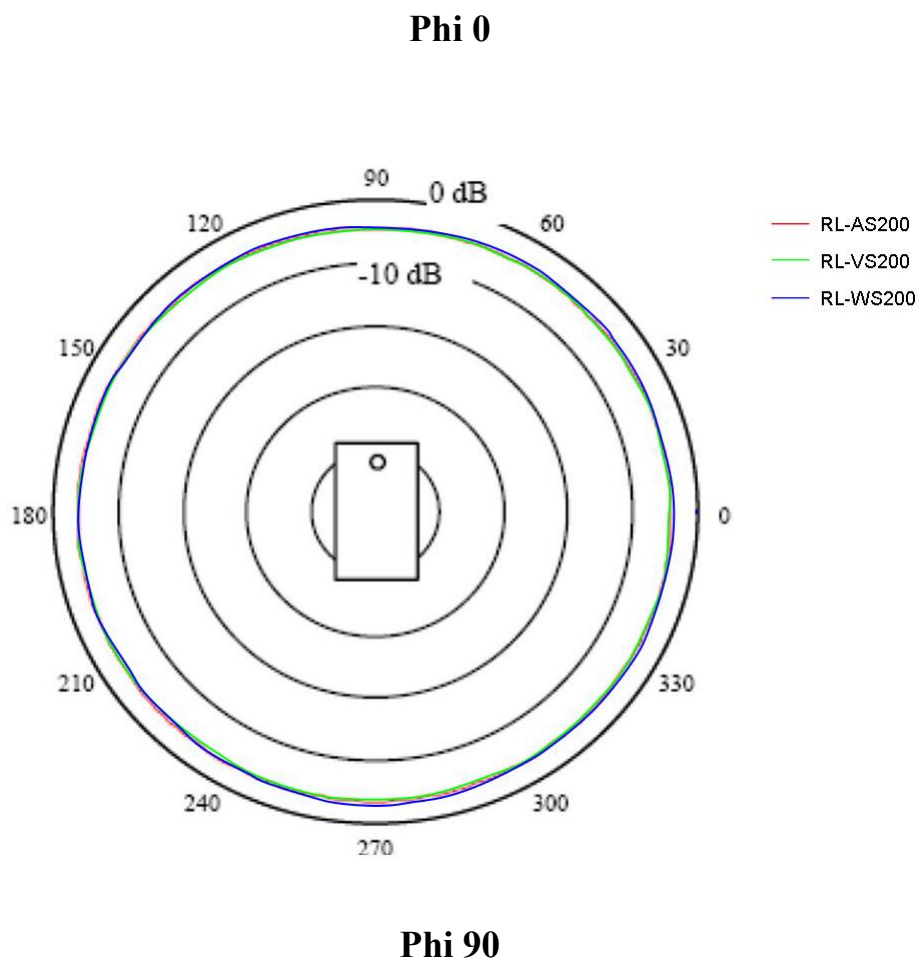


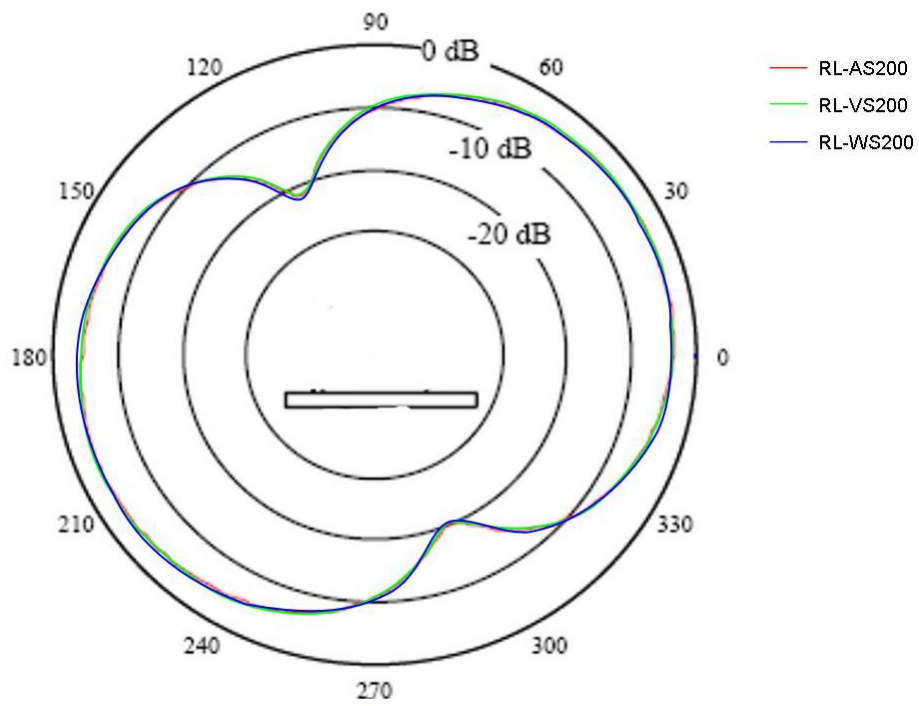
3. Test Results

3.1 Gain and Efficiency

Frequency (MHz)	Peak Gain (dBi)	Efficiency (%)
433	2	44.36

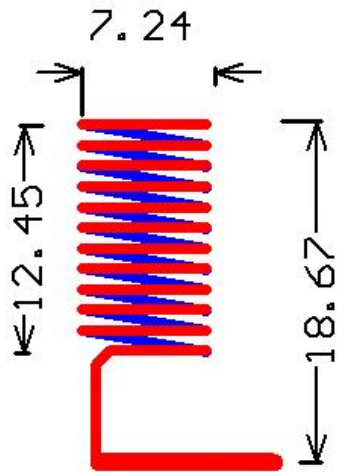
3.2 Radiation Pattern





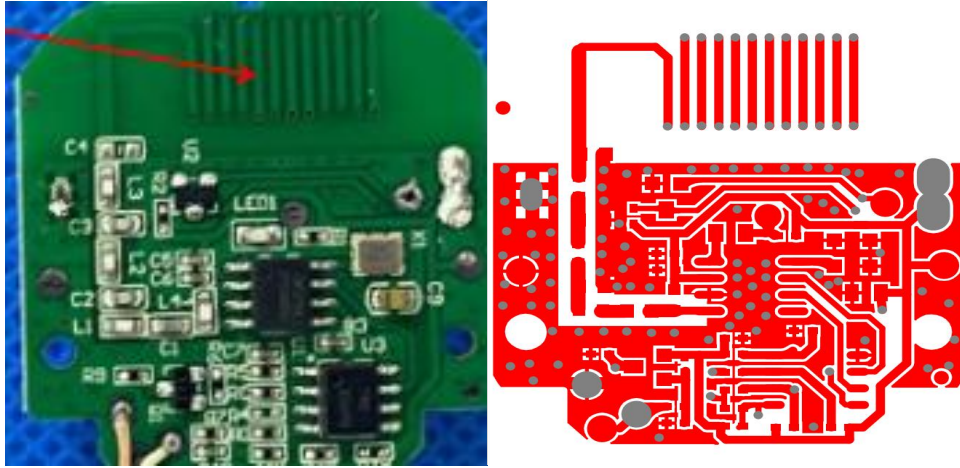
4. Antenna Dimensions

RL-WS200: L: 18.67mm W:7.24mm



5.EUT Photo

RL-WS200



6.Test Setup Photo

