

Appendix B

Detailed Test Results

Bluetooth for Body
WIFI 2.4G for Body
WIFI 5G for Body



SGS-SAR LabDate: 2024-08-30

DT312RP Bluetooth DH5 78CH Bottom side 0mm Ant1

Communication System: ISM 2.4 GHz Band; Frequency: 2480.000

Medium: Head Simulating Liquid. Medium parameters used: $f = 2480.000$ MHz; $\sigma = 1.80$ S/m; $\epsilon_r = 38.3$

DASY8 Configuration:

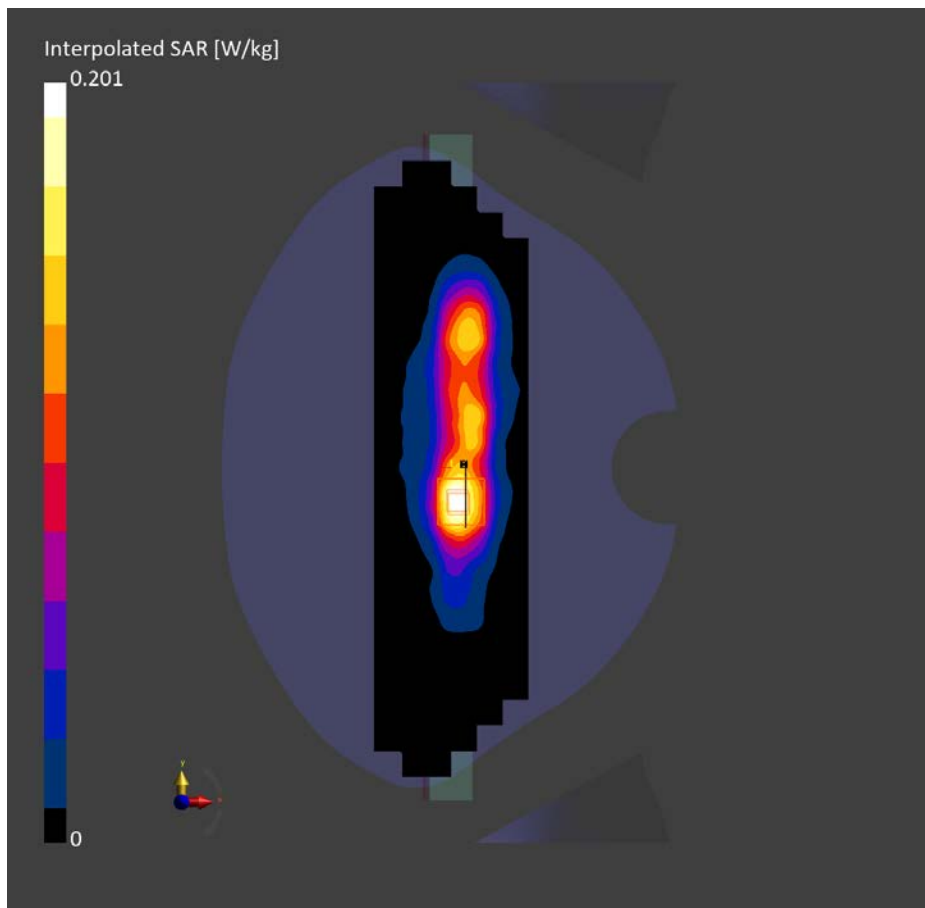
- Probe: EX3DV4 - SN7838; ConvF(7.4, 7.32, 7.42); Calibrated: 2023-09-11
- Sensor-Surface: 1.4 mm
- Electronics: DAE4ip Sn1803; Calibrated: 2024-08-08
- Phantom: Twin-SAM V8.0 (30deg probe tilt); Serial: 2146
- Measurement Software: cDASY8 V16.2.4.2524

Area Scan (72.0 mm x 360.0 mm): Measurement Grid: 12.0 mm x 12.0 mm
SAR (1g) = 0.097 W/kg; SAR (10g) = 0.049 W/kg;

Zoom Scan (30.0 mm x 30.0 mm x 30.0 mm): Measurement Grid: 5.0 mm x 5.0 mm x 5.0 mm

Power Drift = -0.03 dB

SAR (1g) = 0.104 W/kg; SAR (10g) = 0.051 W/kg;



SGS-SAR LabDate: 2024-08-30

DT312RP WIFI 2.4G 802.11b 1CH Top side 0mm Ant2

Communication System: WLAN 2.4GHz; Frequency: 2412.000

Medium: Head Simulating Liquid. Medium parameters used: $f = 2412.000$ MHz; $\sigma = 1.76$ S/m; $\epsilon_r = 38.5$

DASY8 Configuration:

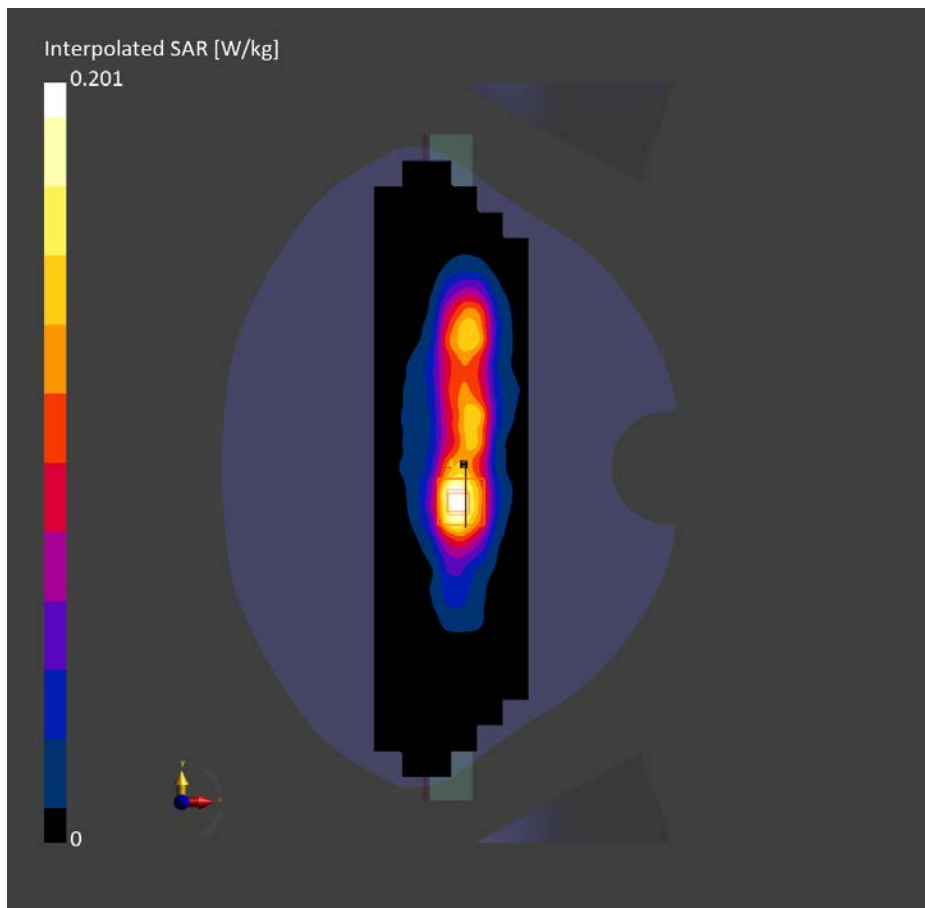
- Probe: EX3DV4 - SN7838; ConvF(7.4, 7.32, 7.42); Calibrated: 2023-09-11
- Sensor-Surface: 1.4 mm
- Electronics: DAE4ip Sn1803; Calibrated: 2024-08-08
- Phantom: Twin-SAM V8.0 (30deg probe tilt); Serial: 2146
- Measurement Software: cDASY8 V16.2.4.2524

Area Scan (72.0 mm x 240.0 mm): Measurement Grid: 12.0 mm x 12.0 mm
SAR (1g) = 0.995 W/kg; SAR (10g) = 0.500 W/kg;

Zoom Scan (30.0 mm x 30.0 mm x 30.0 mm): Measurement Grid: 5.0 mm x 5.0 mm x 5.0 mm

Power Drift = -0.12 dB

SAR (1g) = 1.12 W/kg; SAR (10g) = 0.535 W/kg;



SGS-SAR LabDate: 2024-10-10

DT312RP WIFI 5G 802.11ac 80M 155CH Top side 0mm MIMO

Communication System: WLAN 5GHz; Frequency: 5775.000
Medium: Head Simulating Liquid. Medium parameters used: $f = 5775.000$ MHz; $\sigma = 5.20$ S/m; $\epsilon_r = 35.4$

DASY8 Configuration:

- Probe: EX3DV4 - SN7636; ConvF(5.16, 5.16, 5.16); Calibrated: 2024-07-17
- Sensor-Surface: 1.4 mm
- Electronics: DAE4 Sn1267; Calibrated: 2024-01-03
- Phantom: Twin-SAM V8.0 (30deg probe tilt); Serial: 2156
- Measurement Software: cDASY8 V16.2.4.2524

Area Scan (80.0 mm x 170.0 mm): Measurement Grid: 10.0 mm x 10.0 mm
SAR (1g) = 0.833 W/kg; SAR (10g) = 0.263 W/kg;

Zoom Scan (24.0 mm x 24.0 mm x 22.0 mm): Measurement Grid: 4.0 mm x 4.0 mm x 2.0 mm

Power Drift = -0.19 dB

SAR (1g) = 0.988 W/kg; SAR (10g) = 0.264 W/kg;

