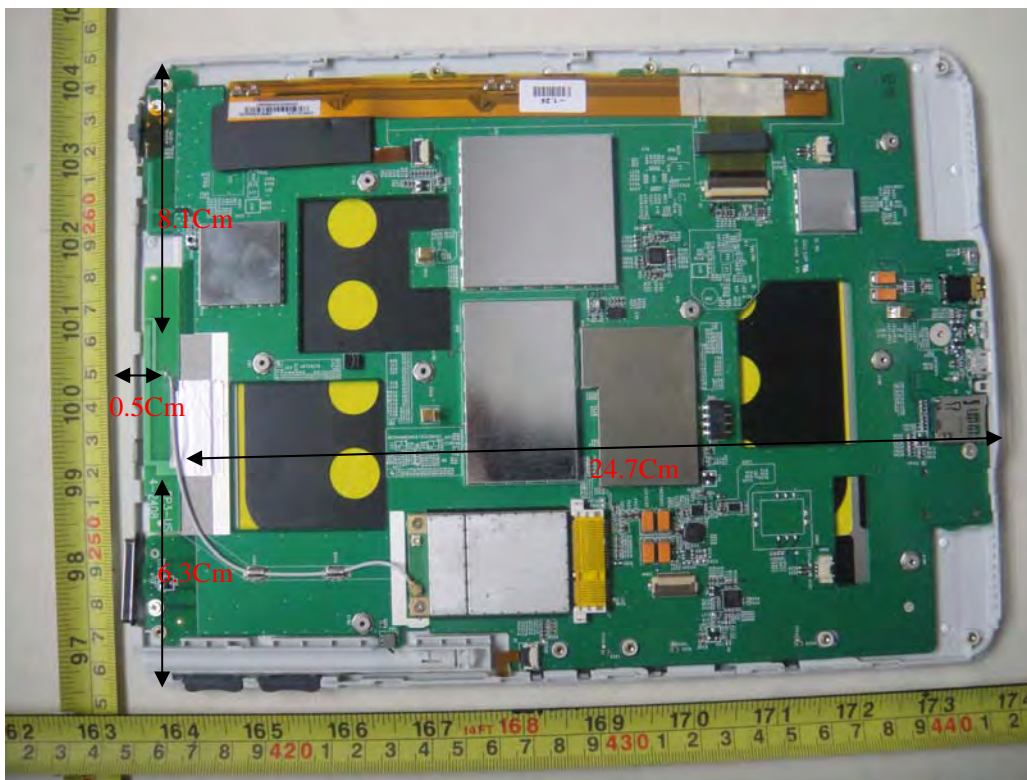


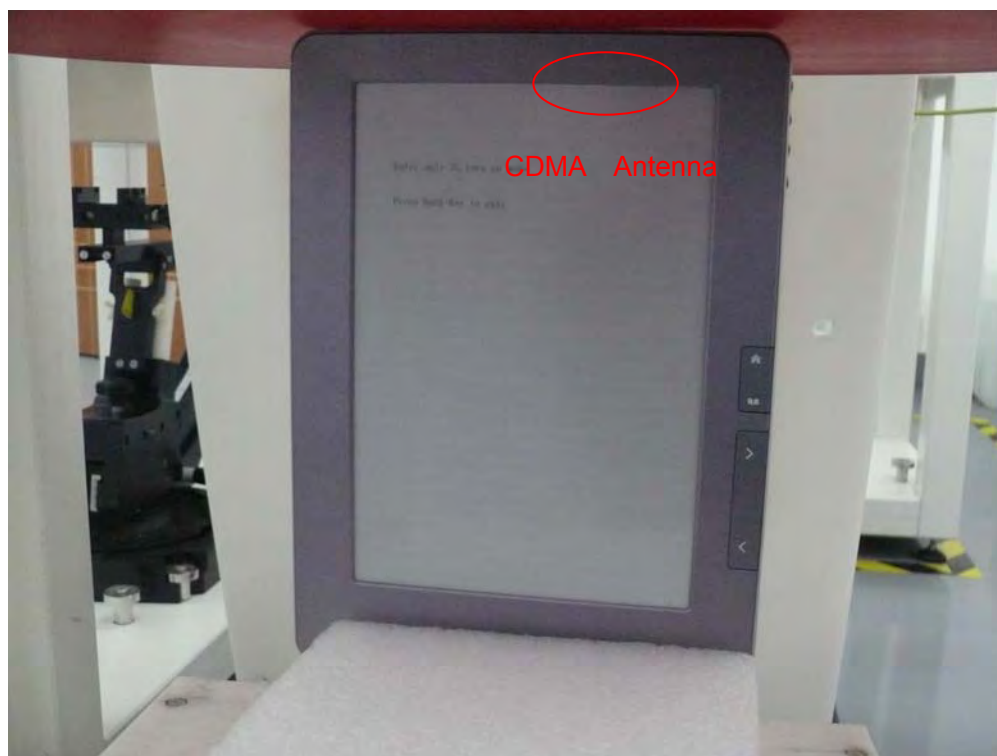
ANNEX H: The EUT Appearances



Picture 4: Constituents of the EUT



Picture 5: Test position 1



Picture 6: Test position 2



Picture 7: Test position 3

(This is not the most conservative antenna - to - user distance at edge mode. According to KDB 447498 4) ii) (2) –SAR is required only the edge with the most conservative exposure conditions, No SAR)



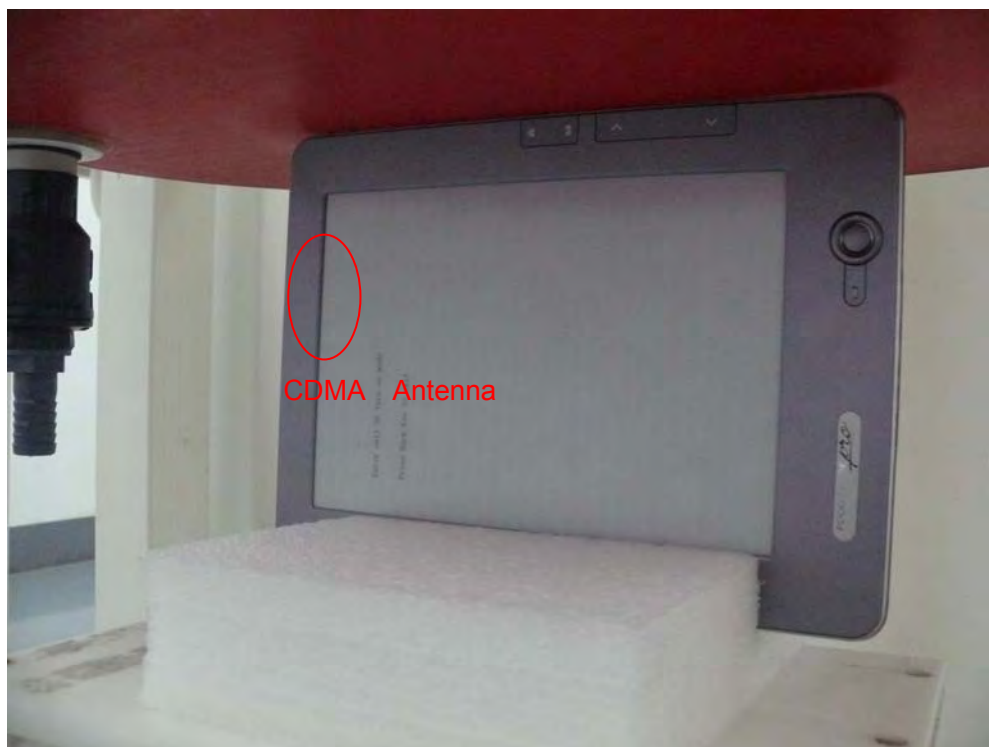
Picture 8: Test position 4

(This is not the most conservative antenna - to - user distance at edge mode. According to KDB 447498 4) ii) (2) –SAR is required only the edge with the most conservative exposure conditions, No SAR)

TA Technology (Shanghai) Co., Ltd.
Test Report

Report No. RZA1012-2019SAR

Page 93 of 93



Picture 9: Test position 5