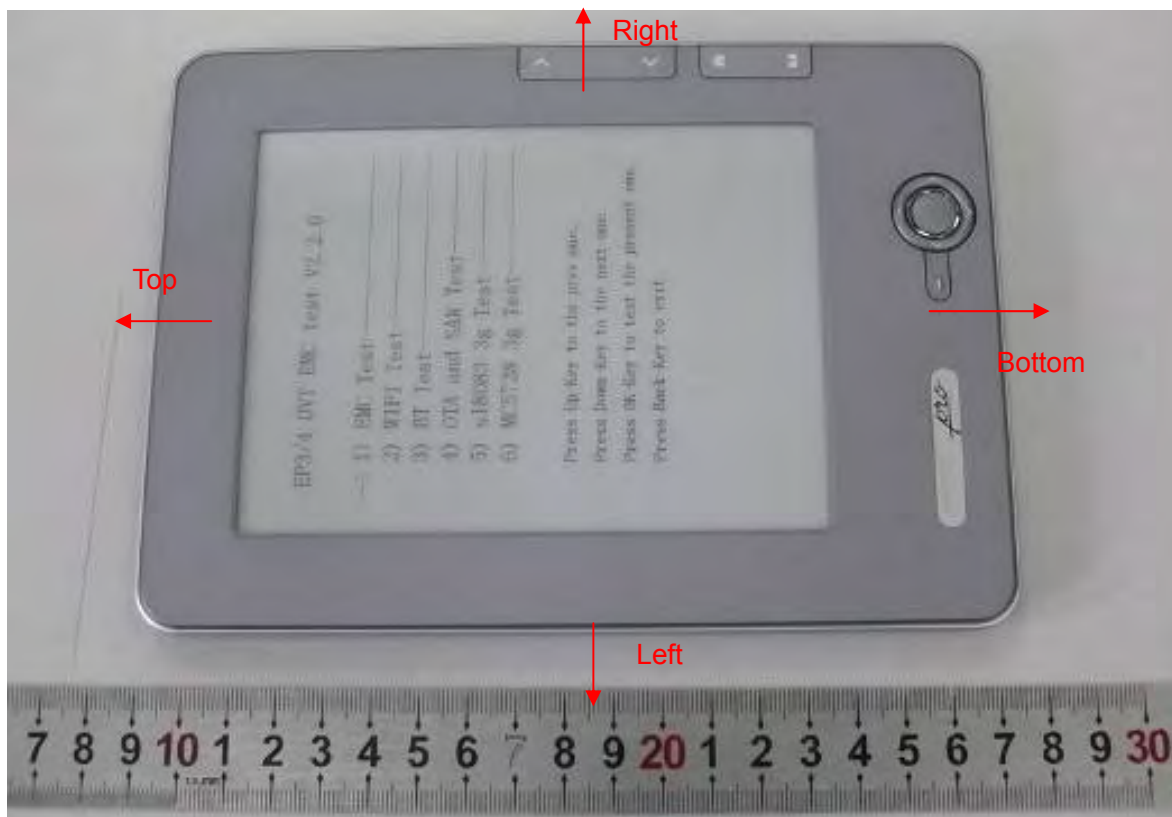
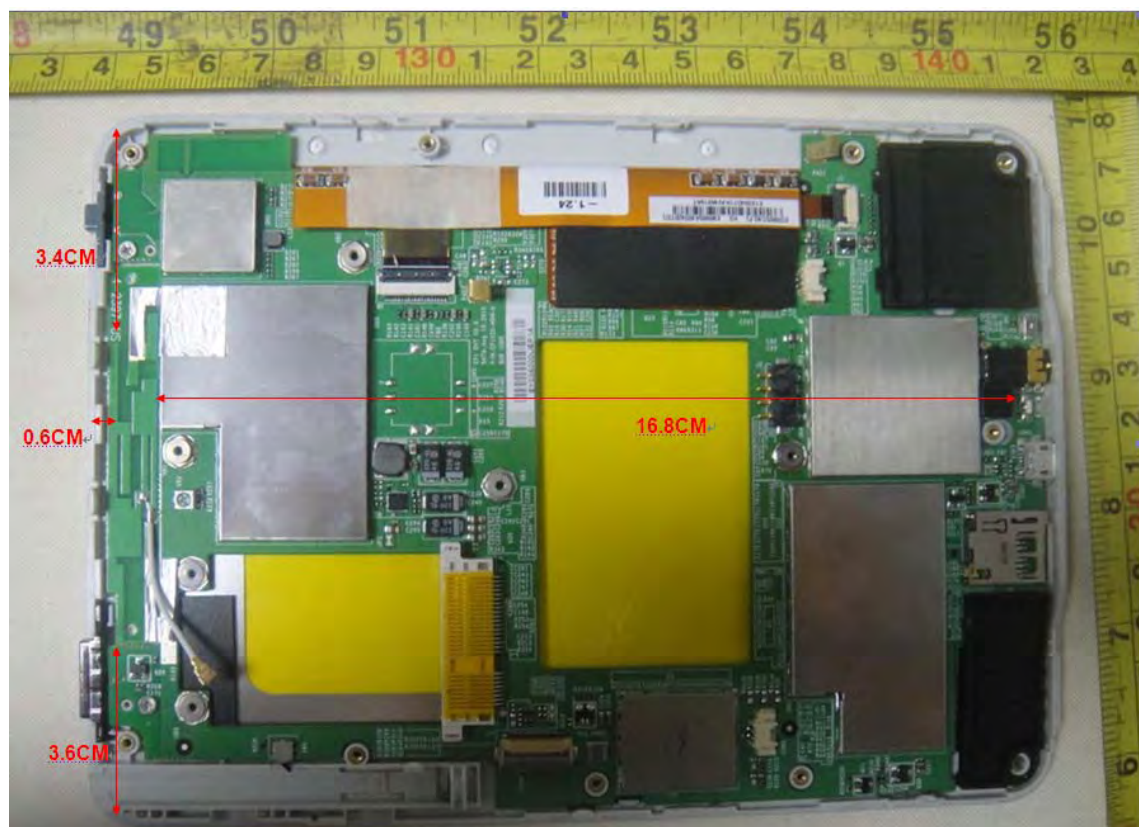


ANNEX H: The EUT Appearances



Picture 4-a: Front Side

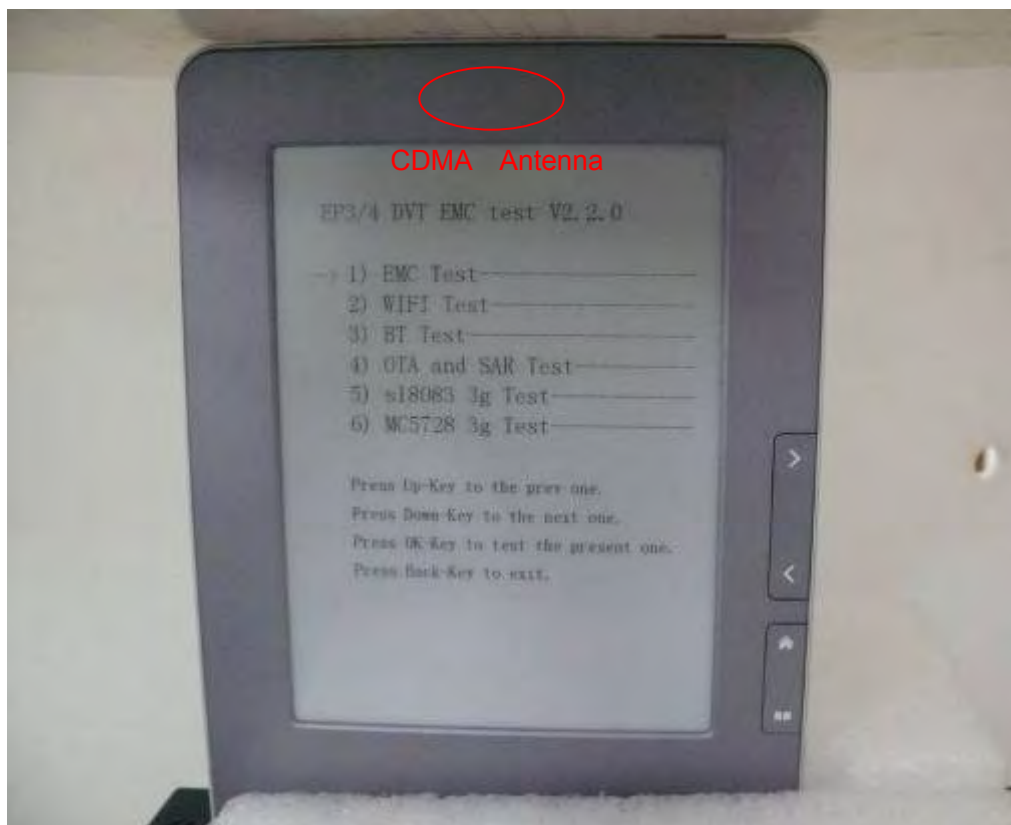


Picture 4-b: Back Side

Picture 4: Constituents of the EUT



Picture 5: Test position 1

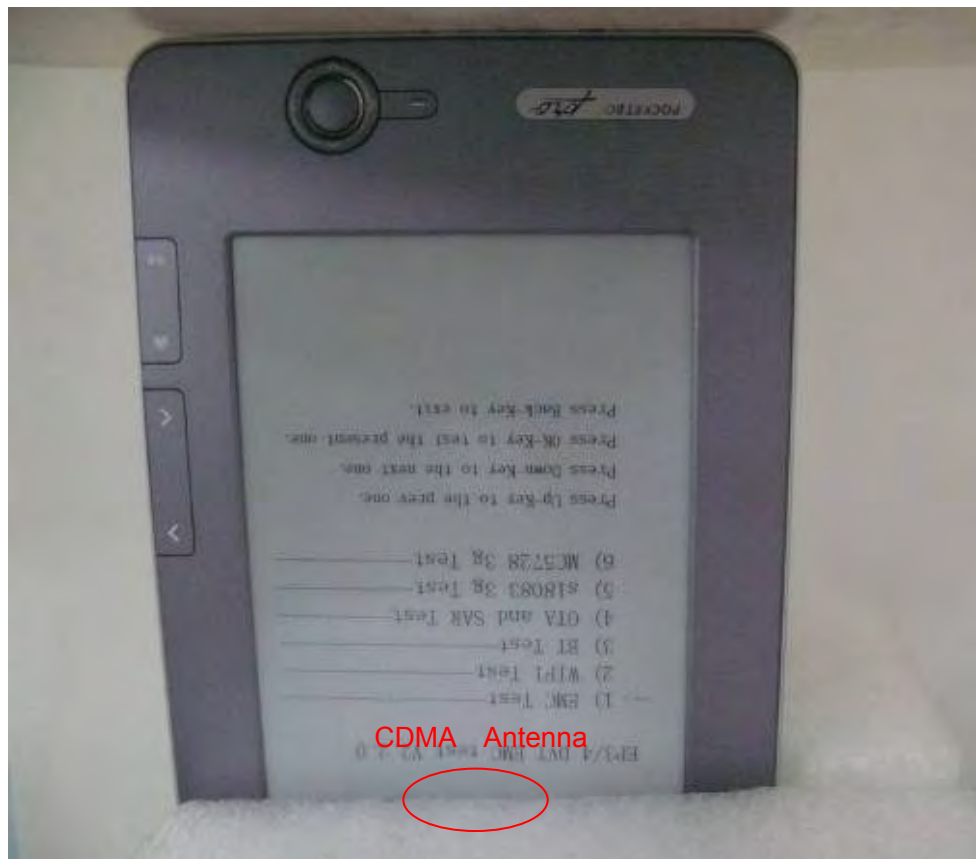


Picture 6: Test position 2

TA Technology (Shanghai) Co., Ltd.
Test Report

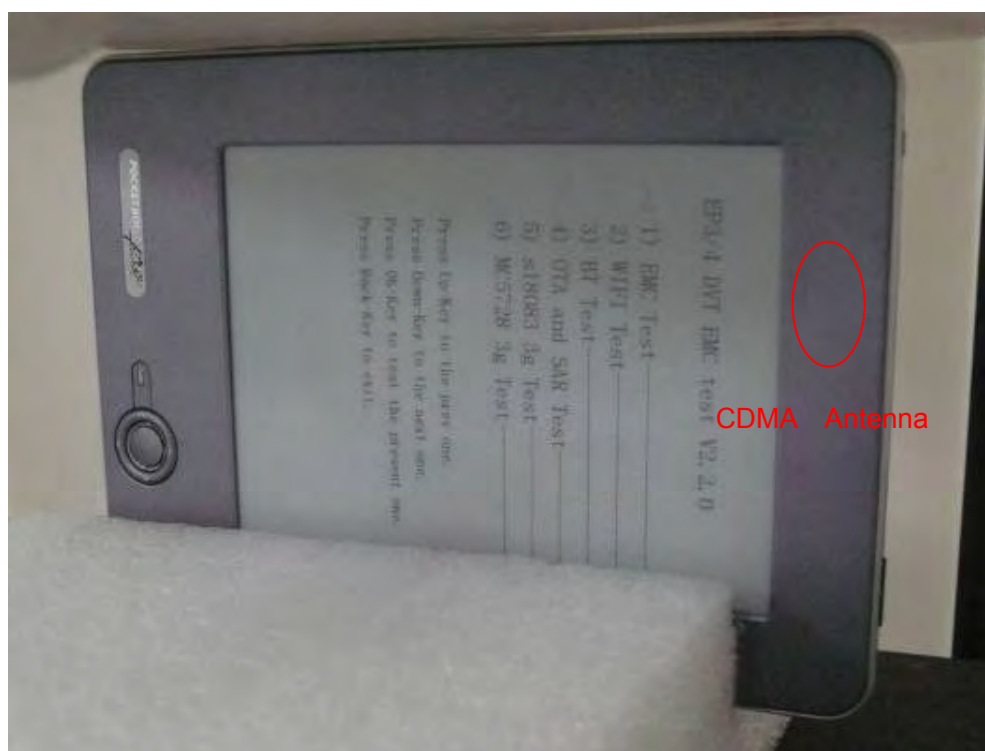
Report No. RZA1012-1933SAR

Page 90 of 91

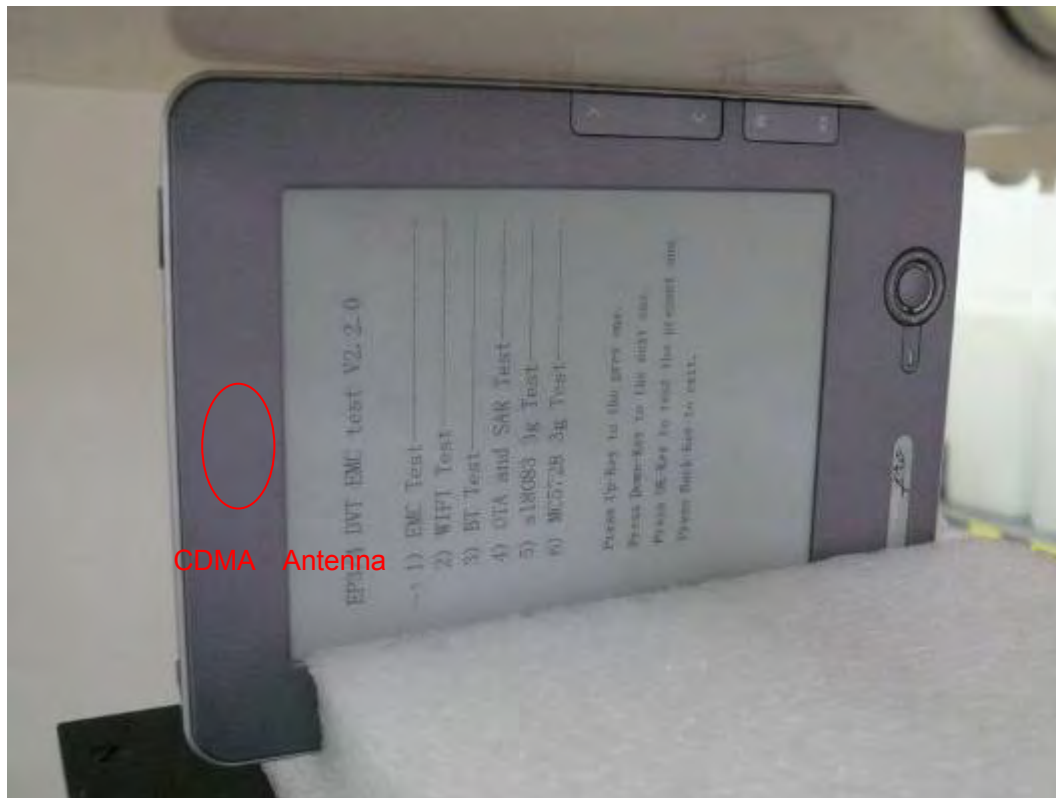


Picture 7: Test position 3

(This is not the most conservative antenna - to - user distance at edge mode. According to KDB 447498 4) ii) (2) –SAR is required only the edge with the most conservative exposure conditions, No SAR)



Picture 8: Test position 4



Picture 9: Test position 5

(This is not the most conservative antenna - to - user distance at edge mode. According to KDB 447498 4) ii) (2) –SAR is required only the edge with the most conservative exposure conditions, No SAR)