

AirKIT_R01B
User Guide Book

Thank you for purchasing the AirKIT !

- LAONEX CO., LTD.

CONTENTS

- A. General information
 - 1. Specifications ----- 1
 - 2. Components ----- 2
 - 3. Parts names ----- 3

- B. Installation
 - 1. Equipments ----- 4
 - 2. Connection ----- 5

- C. Recharging ----- 7

- D. Operation
 - 1. Soft-control ----- 8
 - 2. Key-input ----- 9
 - 3. Dragging ----- 10
 - 4. Scrolling -----11

- D. Cautions ----- 12

- E. Warranty and customer service -- 13

1. SPECIFICATIONS

Model Name	AirKIT-R01B [Remote Controller] RCV01B [USB Receiver]
Radio Frequency	2.4GHz (2.402~2.477GHz)
Comm. Protocol	USB
Effective Distance	About 10(m), but depend on environments
Number of keys	58 keys
Power Supply	Lithium Polymer [Rechargeable]
Size	AirKIT : 140 x 80 x 19 (mm) Receiver : 34 x 18 x 8 (mm)
Weight	100 (g)

2. COMPONENTS



AirKIT [R01B]



User Guide Book

MANUAL



CHARGING CABLE [USB]

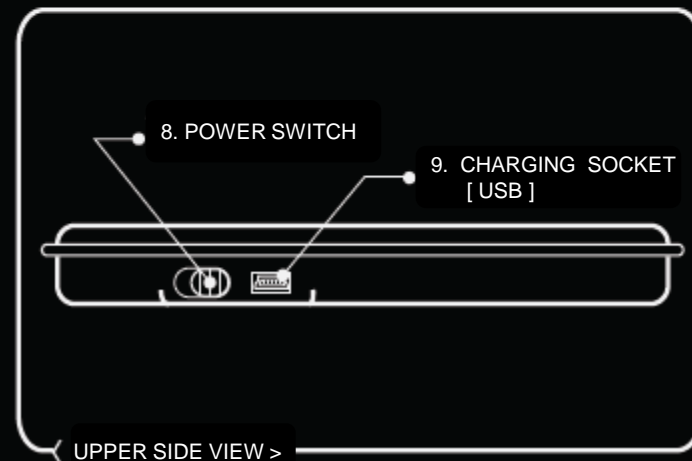
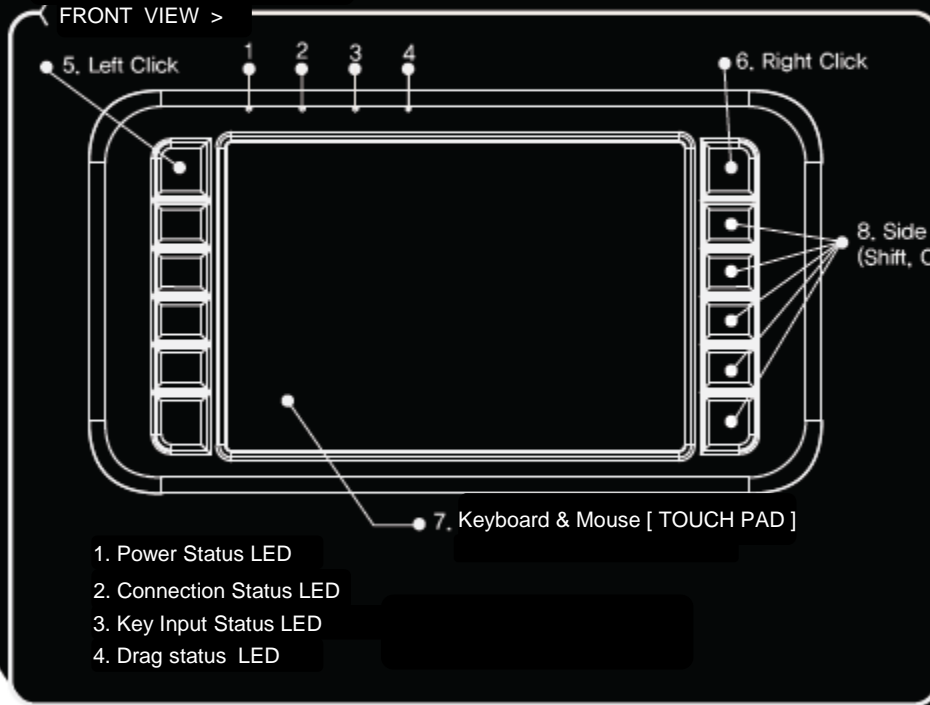


AirKIT Receiver
[RCV01B]



3. PART NAMES

FRONT VIEW >



1. EQUIPMENTS

ONE.



< AirKIT >

TWO.



< USB Receiver >

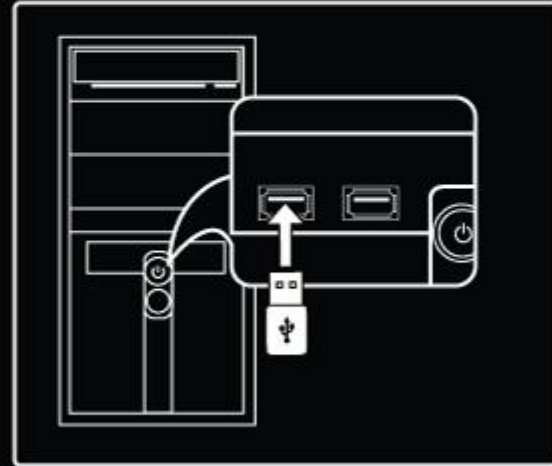
THREE.



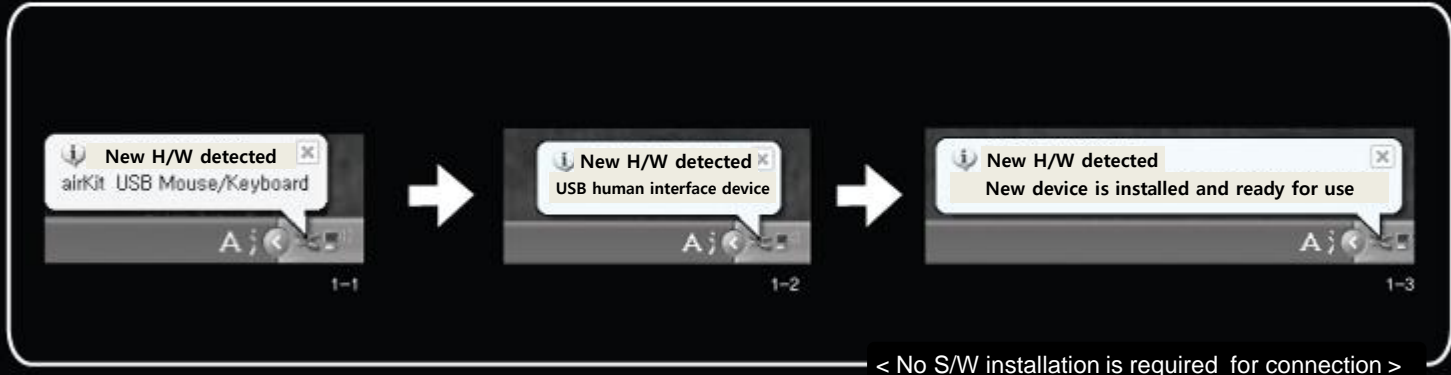
< PC >

2. CONNECTION

ONE. Connect the USB Receiver to PC

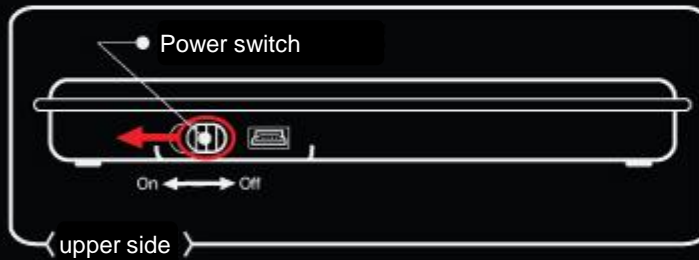


TWO. Confirm device installation as following pop-up messages after the USB Receiver is connected to PC

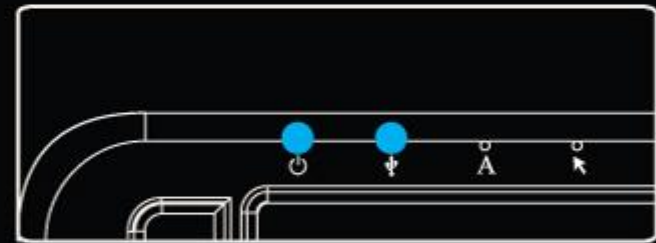


* Above messages and images are a little different according to OS

Three. Turn on the power switch on the upper side



Four. Confirm the ready signal for mouse & keyboard operation as following two LED status for power and USB connection

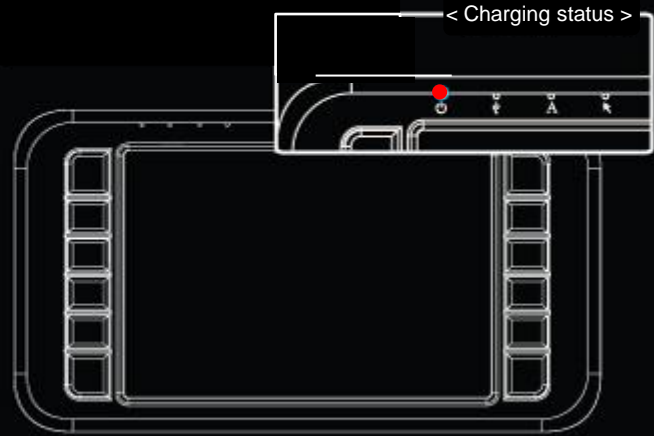
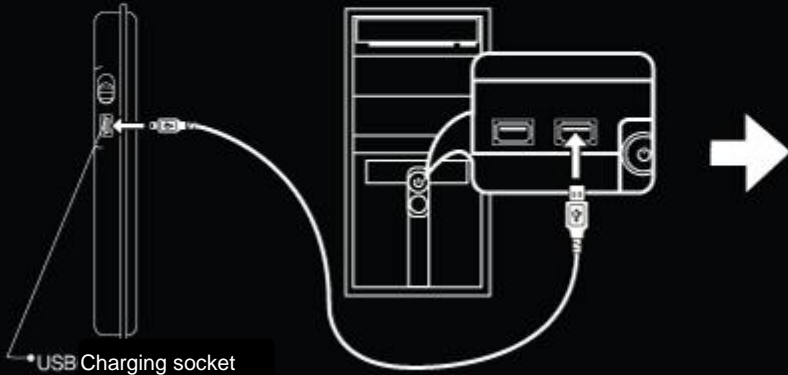


* Perform the pairing process if USB LED is off near PC (< 1m)

Pairing : **Fn** & **Enter** , keep on pressing during 3 seconds

RECHARGING

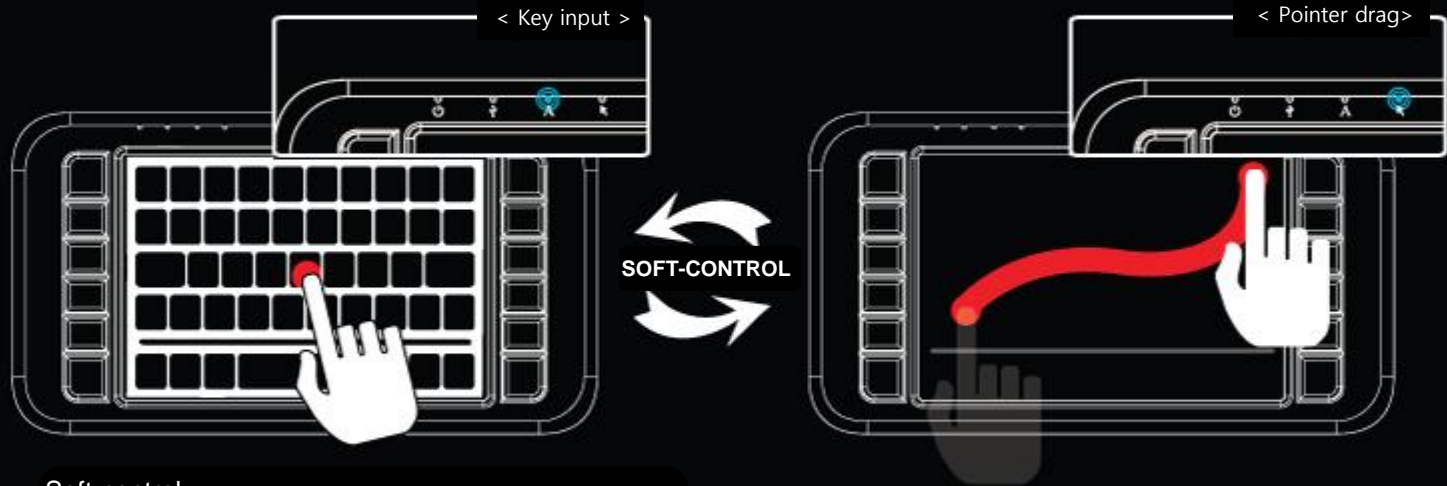
ONE. Connect using the charging cable presented between the USB charging socket of AirKIT and the terminal of PC



TWO. Confirm charging status as LED color turns on 'red'
(It takes 2~3 hours for full charging)


* LED light flicker if residual quantity lack

1. UNIFIED MOUSE & KEYBOARD - Soft-control



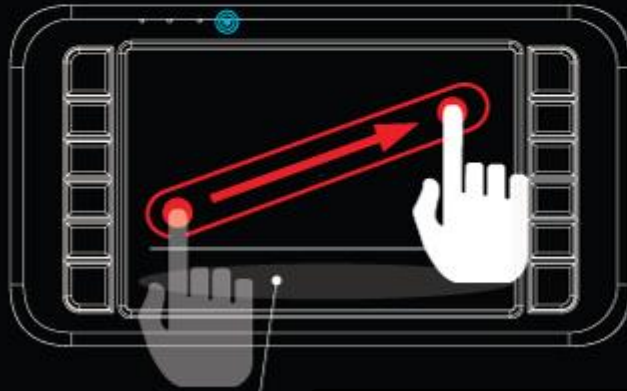
Soft-control :

New TOUCH technology recognizing automatically the operation status between key-input and mouse drag, so user can use each function without switching.

* The light of text-input LED (A) and pointer drag LED () show input mode

2. UNIFIED MOUSE & KEYBOARD - Dragging

ONE. Drag using finger on touch pad



• No area for mouse dragging

TWO. Confirm the mouse pointer on the screen responding to finger moving



3. UNIFIED MOUSE & KEYBOARD - Key input

ONE. Character is inputted when finger is released on touch pad



> Special Function <

Fn + **Alt** = : Key sound ON/OFF
Fn + **Enter** + **3sec** = **Pairing**

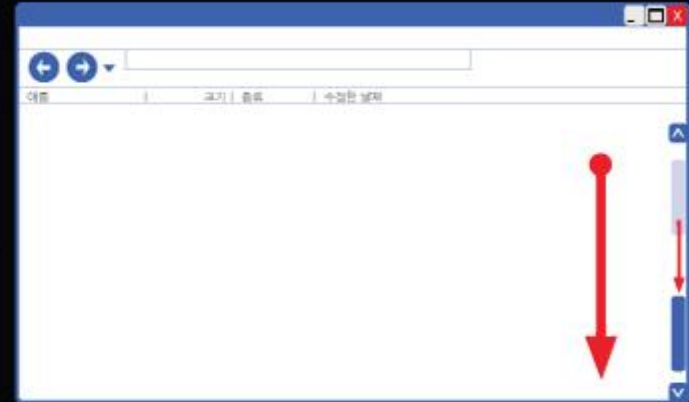
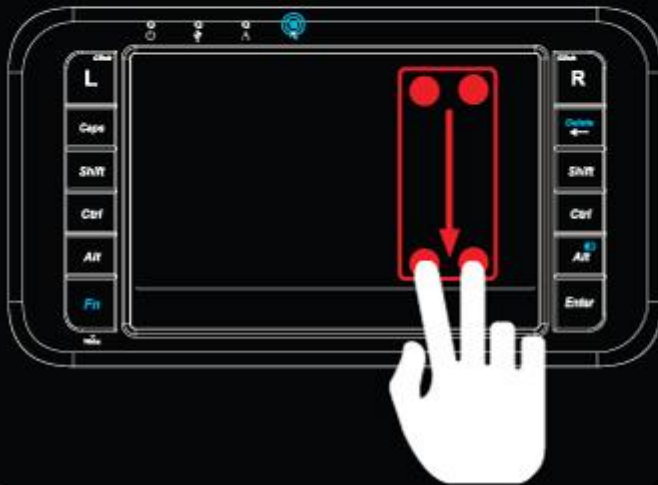
TWO. Additional special KEY is inputted with 'Fn' button on the left and low side



Fn or **Enter** = **Wake** : Wake up the sleep status of the device

4. UNIFIED MOUSE & KEYBOARD - Scrolling

ONE. Move up and down using two fingers



TWO. Confirm scroll bar on the screen

* Scroll with '**Ctrl**' button is used for zooming in / out

FCC Information to User

This equipment has been tested and found to comply with the limits for a Class B digital device, pursuant to Part 15 of the FCC Rules. These limits are designed to provide reasonable protection against harmful interference in a residential installation. This equipment generates, uses and can radiate radio frequency energy and, if not installed and used in accordance with the instructions, may cause harmful interference to radio communications. However, there is no guarantee that interference will not occur in a particular installation. If this equipment does cause harmful interference to radio or television reception, which can be determined by turning the equipment off and on, the user is encouraged to try to correct the interference by one of the following measures:

- Reorient or relocate the receiving antenna.
- Increase the separation between the equipment and receiver.
- Connect the equipment into an outlet on a circuit different from that to which the receiver is connected.
- Consult the dealer or an experienced radio/TV technician for help.

Caution

Modifications not expressly approved by the party responsible for compliance could void the user's authority to operate the equipment.

FCC Compliance Information

This device complies with Part 15 of the FCC Rules. Operation is subject to the following two conditions:

- (1) This device may not cause harmful interference, and
- (2) this device must accept any interference received, including interference that may cause undesired operation

MODEL NAME : R01B / RCV01B
CERTIFICATION NO. : Y6V-R01B / Y6V-RCV01B
RADIO FREQUENCY : 2418 ~ 2478 MHz
COMPANY / COUNTRY : LAONEX CO., LTD. / SOUTH KOREA

Contact information :

TEL : +82-70-7759-5164
FAX : +82 505- 953-5164
Website : www.laonex.com

WARRANTY

1. Warranty periods : 1 year

airKit

LAONEX

LAONEX CO., LTD.