

Wireless Media Box User Manual

(4TV)

Content

- 1 Important Information**
 - 1.1 Safety Precautions**
 - 1.2 Declaration of Conformity**
 - 1.3 Special notice**
 - 1.4 Cleaning**
- 2 Product Overview**
 - 2.1 Product Specifications**
 - 2.2 Product Feature**
 - 2.3 Packing Content**
 - 2.4 Operating Principle**
 - 2.4.1 AP mode**
 - 2.4.2 LAN mode**
 - 2.5 Functional Interface Description**
 - 2.5.1 Front Panel Description**
 - 2.5.2 Back Panel Description**
 - 2.5.3 Right Panel Description**
- 3 Installation**
 - 3.1 Device Connection**
- 4. Operation**
 - 4.1 Device Operation**
 - 4.1.1 Remote Control User Guide**
 - 4.1.2 Booting Screen**
 - 4.1.3 Home Screen**
 - 4.1.4 Setup Menu**
 - 4.2 Windows Control Application User Guide**
 - 4.3 Android control application**
 - 4.4 DLNA software**
- 5 Software update**
- 6 Troubleshooting**
- 7 Other information**

1 Important Information

Before you use wireless media box, it is important that you read this user manual carefully to get important information and instructions regarding this device.

Thank you for buying this quality product. Any defects or malfunctions occurring during a specific period will be rectified or repaired free of charge, but this warranty may not apply to following cases:

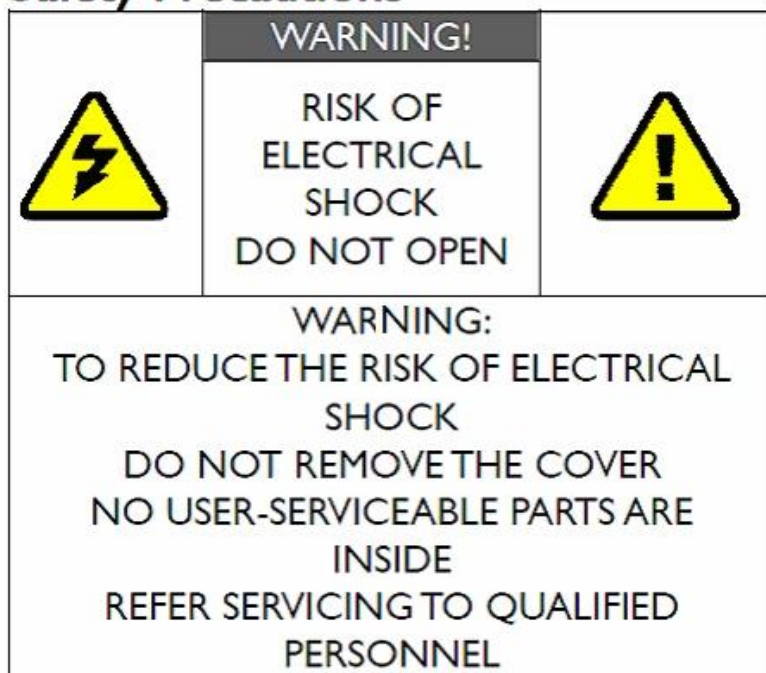
- Unauthorized modification to the products or repair by an unauthorized

technician.

- Breakage caused by accidents such as but not limited to fire, water immersion and moisture.
- Use on incorrect voltage, use contrary to operating instructions.
- Product number got altered, removed or made illegible.

1.1 Safety Precautions

Safety Precautions



Danger: Electricity Hazard

- Power must be switched off when not in use, any power adaptors connected AV devices and TV should be plugged out.
- Power outlet: To prevent electricity shock, please check if the mains lead used on the receiver and transmitter corresponds to the power outlet.
- Mains lead: Stepping or putting heavy stuffs on mains lead is prohibited.
- Power overloading: Do not overload the power outlets, otherwise electric shock or fire could happen. If the power is overly loaded, please extend the mains lead.
- Lighting stroke: Disconnect the power adaptor when product is not used for a long time or in lighting stroke weather.
- Switch off the power when product is not in use to prevent electric shock or fire.



Warning:

- Keep the product away from objects with liquids and splashing or dripping on this product is strictly prohibited.

- Put the product in a well-ventilated space and keep it away from direct sunlight or any source of heat.
- Do not expose the product to rain or moisture.

1.2 Declaration of Conformity

R&TTE This product complies with Part 15C and Part 15E of FCC Rules.
Part 15: Subpart C—Radiated Emission Limits, Additional Provisions.
Part 15: Subpart E---Unlicensed National Information Infrastructure Devices.

This device complies with relative criteria CE Certification.

EN 60950-1:2006

Information Technology

Equipment ---Safety---

Part 1: General Requirements

EN 300440-01(V1.6.1)

Electromagnetic Compatibility and Radio Spectrum Matters (ERM)

Short Range Devices.

Radio equipment to be used in the 1GHz to 40GHz frequency.

Part 1: Technical Characteristics and Test Methods

EN 301489-03(V1.4.1)

Electromagnetic Compatibility and Radio Spectrum Matters (ERM);

Part 3: Specific conditions for Short-Range Device (SRD)

Operating on frequency between 9 kHz and 40 GHz

EN 301489-17(V2.1)

Electromagnetic Compatibility (EMC) Standard for Radio Equipment and Services;

Part 17: Specific conditions for Broadband Data Transmission Systems

EN 301893(V1.5.1)

Broadband Radio Access Network (BRAN)

5 GHz high performance RLAN

Harmonized EN covering the essential requirements of article 3.2 of the R&TTE Directive

1.3 Special Notice

Do not use this device nearby an aircraft or medical facilities otherwise interference and undesired operation may occur. Place this device carefully to prevent abnormal video/audio.

Keep this device away from metal furniture and explosive products. Don't put it on unsteady places. Ensure there is no danger hazard on joints of wires.

Do not put it on dusty or damp environment. Keep it away from too low or too high temperature or any source of heat.

This device should be powered by direct current. Ensure battery used on it meets the standard of 5V 2.5A.

Putting heavy stuffs on this device is strictly prohibited. Place it on a well-invented area. Do not block vent area.

Please turn power off and pull power adaptor out of socket for energy saving.

Restart the device when undesired problems occurred. If problems still exist, please consult professionals for maintenance.

- This device has been manufactured and tested to comply with each country's safety regulations. It doesn't guarantee that interference would never happen in some specific environment. If interference does occur, please increase the separation between transmitter and receiver.
- This product tends to be interfered by wireless device with 5GHz frequency, such as a router or other wireless device. If you have 802.11n router, configure it to use the 2.4GHz rather than 5GHz.
- The optimal operation distance between receiver and transmitter is from 1 meter to 30 meters.

1.4 Cleaning

Turn the power off and wipe the device using a soft cloth or a cloth moistened with alcohol.

Do not use chemical detergent and ensure all cleaning is conducted when power is off.

- ✧ Do not dismantle this device or conduct maintenance or cleaning when it is powered
- ✧ Maintenance should be conducted by authorized technician.
- ✧ Dripping or splashing on this device is strictly prohibited.
- ✧ Keep it away from fire or any source of heat.
- ✧ Do not let kids play with it.

2 Product Overview

2.1 Product Specifications

Model	DF-DL08
Supported video frequency	480p、720p、1080p
HDMI port	Support HDMI1.3 audio and video format
Transmission distance	With transmission distance of 10 meters in space free of obstacles
Wireless connection	Wi-Fi 802.11 b/g/n
Network port	Ethernet 10M/100M
Antenna	Built out antenna
Operating frequency	2.4 GHz
Power	100~240V alternating current input, 5V 2.5A

	direct current output adaptor
Certificates	FCC、 CE
Audio port	Lotus base (L/R), digital optical
Operating temperature	0℃ - 50℃
Dimensions	127mm (L) × 96mm (W) × 28mm (H)
Weight	260g

2.2 Product Feature

- Support 1080P HD video
- With operating frequency of 2.4GHz
- With a transmission distance of 10 meters
- Built-out antenna
- Designed with functions as a wireless router
- Available to play video and audio files from U flash disk

2.3 Packing Content

Please check if the following items are present at package box, if any of them is missed or damaged, please contact distributor.

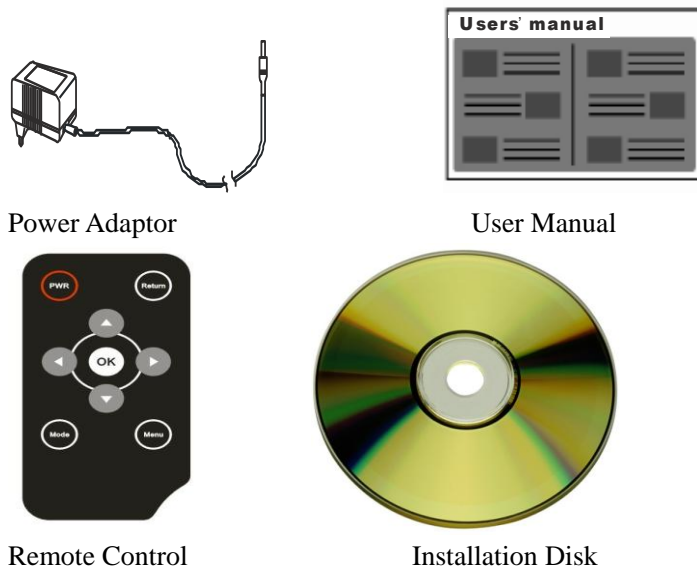
Main part:



Picture 1 Real Object

Supplied Accessories:

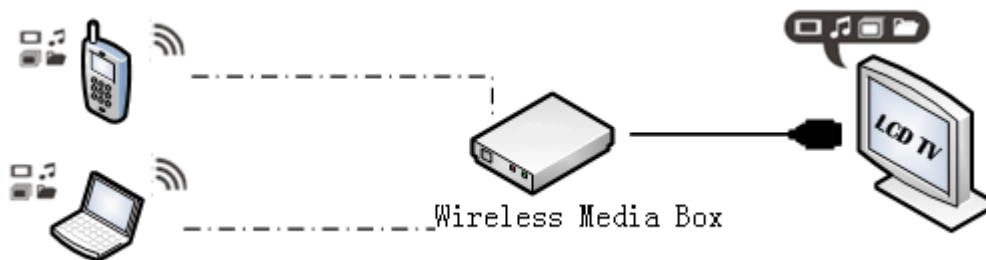
One user manual, one power adaptor, one infrared remote control, one installation disk



2.4 Operating Principles

This device can be operated under two network connection mode

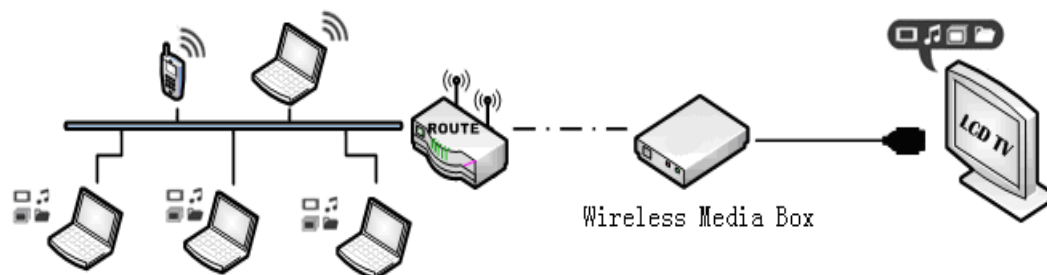
2.4.1 AP mode



Picture 2 AP mode

The 4TV acts as a wireless access point. Your Windows computer or smart device can be connect ed to 4TV directly. This setup constructs a temporary wireless network for a non wireless environment, as illustrated by picture 2.

2.4.2 LAN Mode



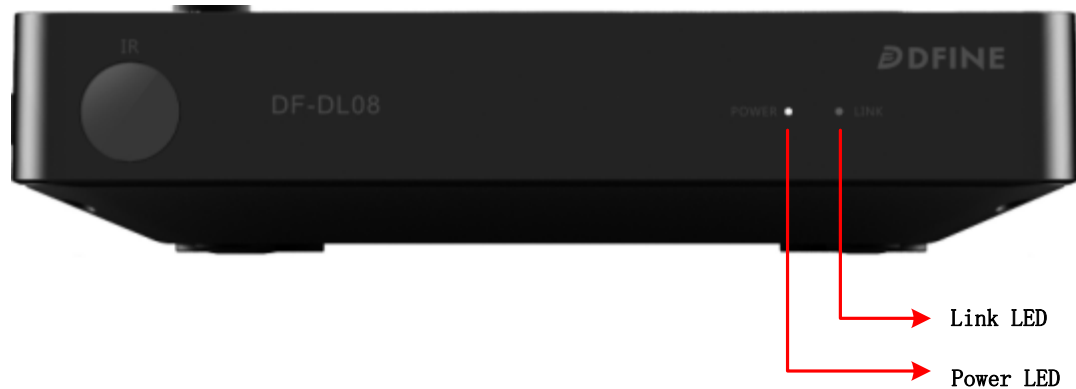
Picture 3 LAN mode

The 4TV and your Windows computer or smart device connects to a same wireless network.

This setup provides capability for remote operation and internet connection, as illustrated by picture 3.

2.5 Functional Interface Description

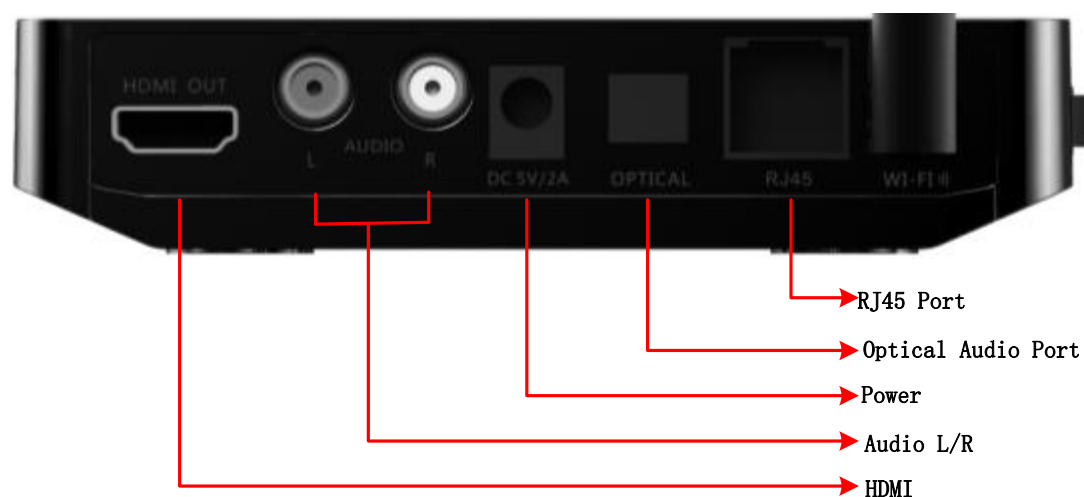
2.5.1 Front Panel Description



Picture 4 Front Panel

- Link LED : indicates connection status
- Power LED: indicates power supply status

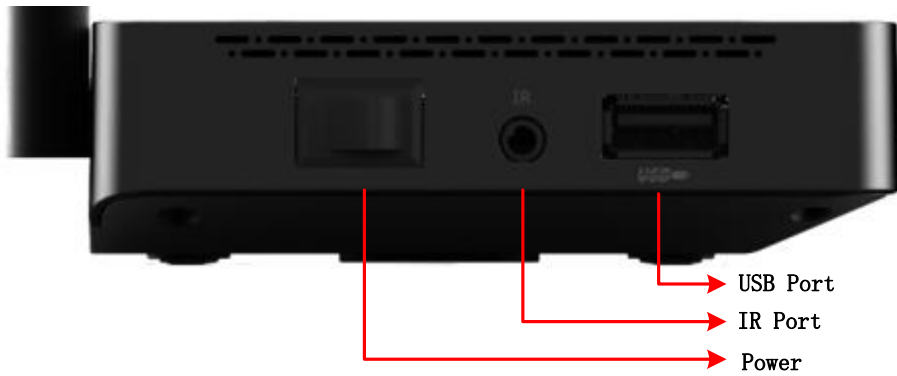
2.5.2 Back Panel Description



Picture 5 Back Panel

- HDMI port: for connecting 4TV to display equipment
- Right and Left Channel Audio Port: for connecting 4TV to audio player
- Mains Port: to connect 5V 2.5A power adaptor
- Optical Audio Port: for connecting 4TV to optical audio player

2.5.3 Right Panel Description

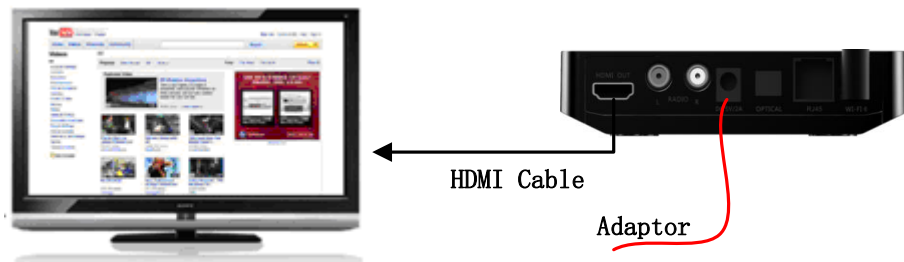


Picture 6 Right Panel

- Power Switch Button: to switch power on and off
- Infrared Extension Port: to connect infrared wire
- USB port: to connect USB flash disk

3 Installation

3.1 Connection



Picture 7 Device Connection

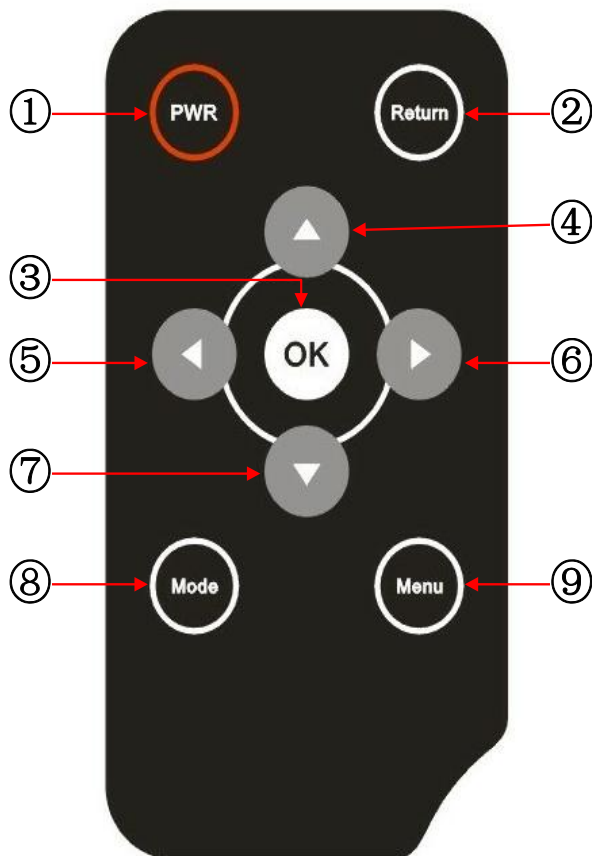
- a) Connect 4TV to display equipment by HDMI cable, such as LED.
- b) Plug power adaptor in and device will be powered on.

Please note: make sure wireless router is correctly configured.

4 Operation

4.1 Device User Guide

4.1.1 Remote control button description



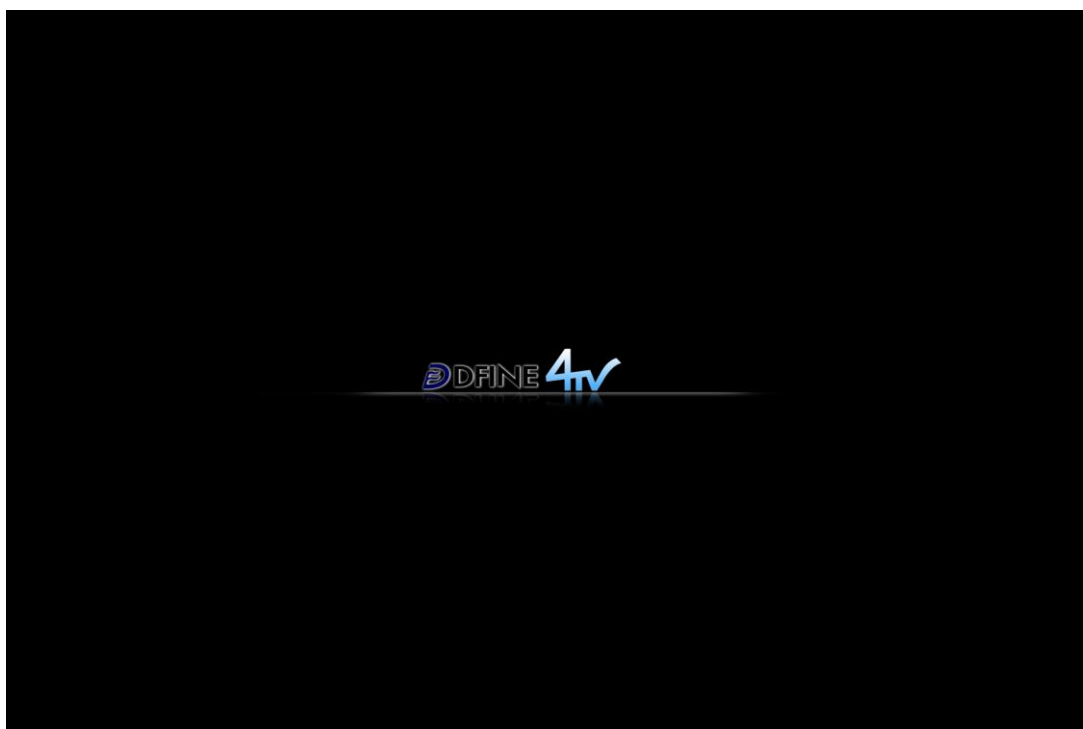
Picture 8 Infrared Remote Control

Table 1 Remote Control Button Description

Number	Name	Function description
①	PWR	Standby button
②	Return	To return to previous interface
③	OK	To confirm
④	△	Up
⑤	◁	Left
⑥	▷	Right
⑦	▽	Down
⑧	Mode	To select desired mode
⑨	Menu	To show all items

4.1.2 Boot Screen

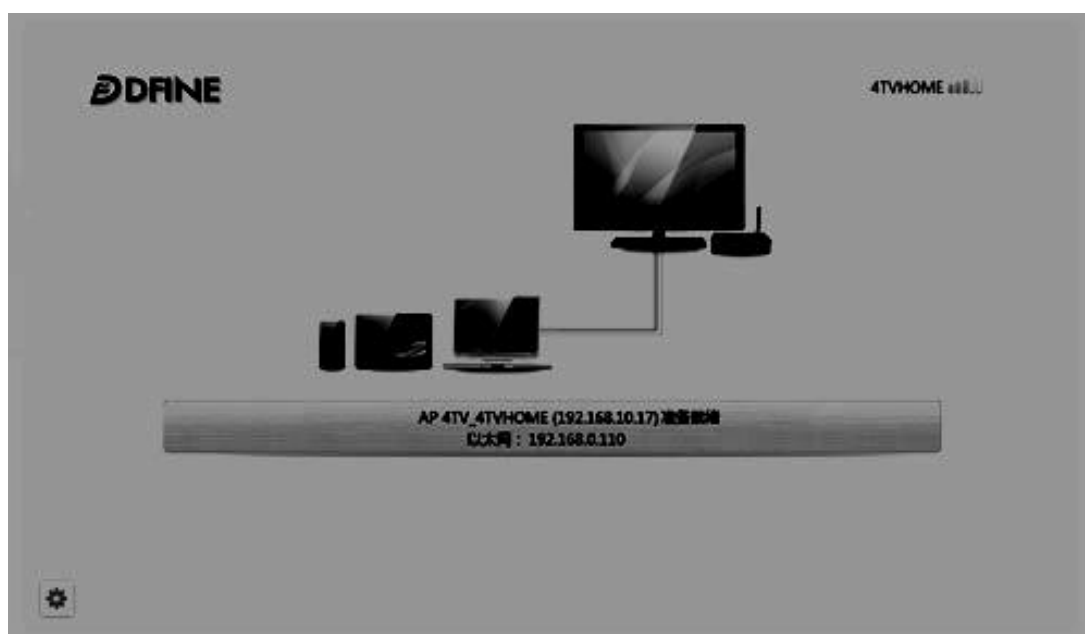
After connected correctly and got powered on, the device will start to boot and boot screen will be shown as follows at display equipments (LED, TV)



Picture 9 Boot Screen

4.1.3 Home Screen

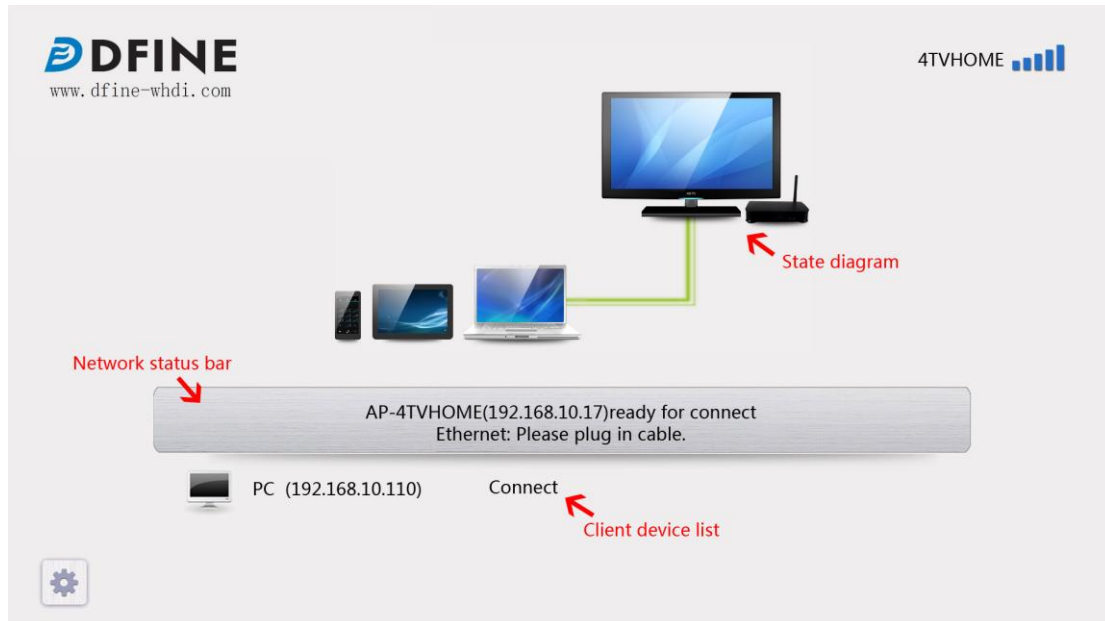
Home screen shows the current network connection mode and the client device connection status.



Picture 10 Home Screen

Device information: to show device name and wireless network status.

Connection status: as illustrated by picture 11, you can know link status such as network IP address, connection process and connected output devices.



Picture 11 Device Connection Status

4.1.3.1 AP mode

If 4TV runs in AP mode and device is trying to access network, home screen will be shown as below:

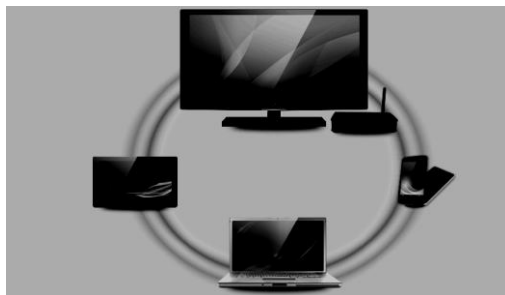
- a) Accessing network video will be shown.
- b) Wireless network information will be displayed in network status bar

When wireless network is connected successfully, home screen will be shown as illustrated by picture 12.

- a) System will alert network is successfully connected.
- b) Wireless network information will be displayed in network status bar.



Picture 12 Successful Connection under AP Mode



Picture 13 Successful Connection under LAN Mode

4.1.3.2 LAN mode

If wireless media box runs in LAN mode and device is trying to access network, home screen will be shown as below:

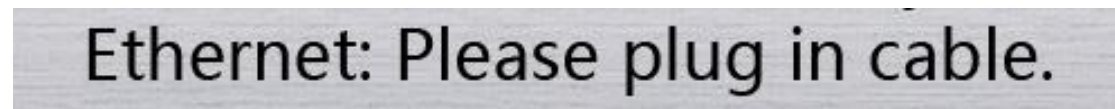
- a) System is trying to access network.
- b) Wireless network information will be shown at network status bar.

When wireless network is connected successfully, home screen will be displayed as below:

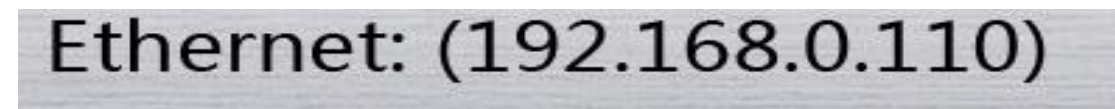
- a) System alerts network is successfully connected.
- b) WiFi information and IP information will be shown at network status bar.

4.1.3.3 Ethernet mode

- a) When device is waiting for Ethernet to connect, home screen will be shown as illustrated by picture 14
- b) When Ethernet is connected successfully, home screen will show IP address, as illustrated by picture 15.



Picture 14 Systems is Waiting for Ethernet Network to Connect



Picture 15 Ethernet is Successfully Connected

4.1.3.4 Client Control Application Connection Status

4TV supports client control application and DLNA DMC.

4TV client control application connection status:

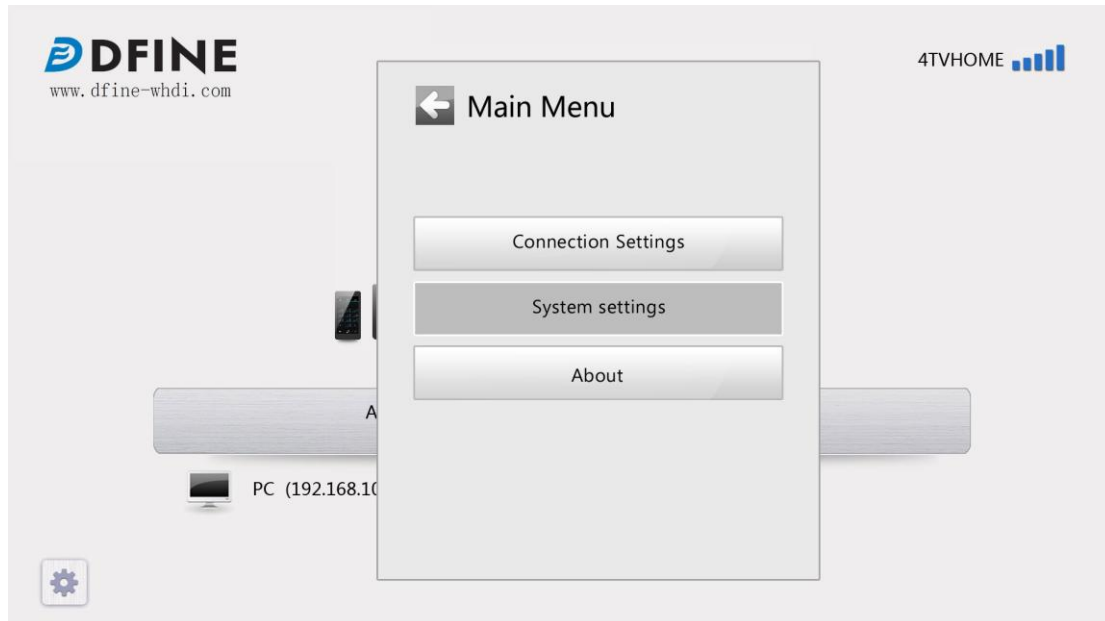
- a) When input device is successfully connected by client control application, it will be shown on device list on display equipment.
- b) Buffering information is shown on display equipments when device is trying to play video items.
- c) Playing status is shown on display equipments when 4TV is playing audio items.

4.1.3.5 DLNA DMC Device Connection Status

When DLNA DMC is playing media files, device list will show playing status.

4.1.4 Setup Menu

Press "menu" button on remote control to show setup item.



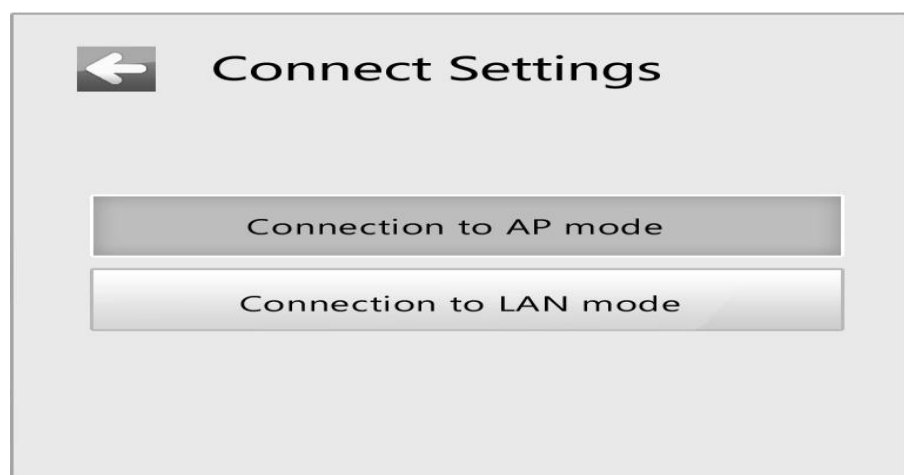
Picture 16 Setup Menu

Setup menu can help you configure wireless network, switch network mode, modify device name and change audio output mode and set language.

4.1.4.1 Switch network mode

You can switch network mode by the following steps:

- a) Ensure home screen is displayed;
- b) Press **【Menu】** button on remote control to show setup item;
- c) Use navigation button **【up】****【down】** to locate “connection setup” item;
- d) Press **【OK】** button on remote control to show subsidiary menu.
 - 1) If system is under “AP mode”, subsidiary menu will show “switch to LAN mode”.
 - 2) If system is under “LAN mode”, submenu will show “switch to AP mode”.



Picture 17 Connection Settings

4.1.4.2 Wireless Network Configuration

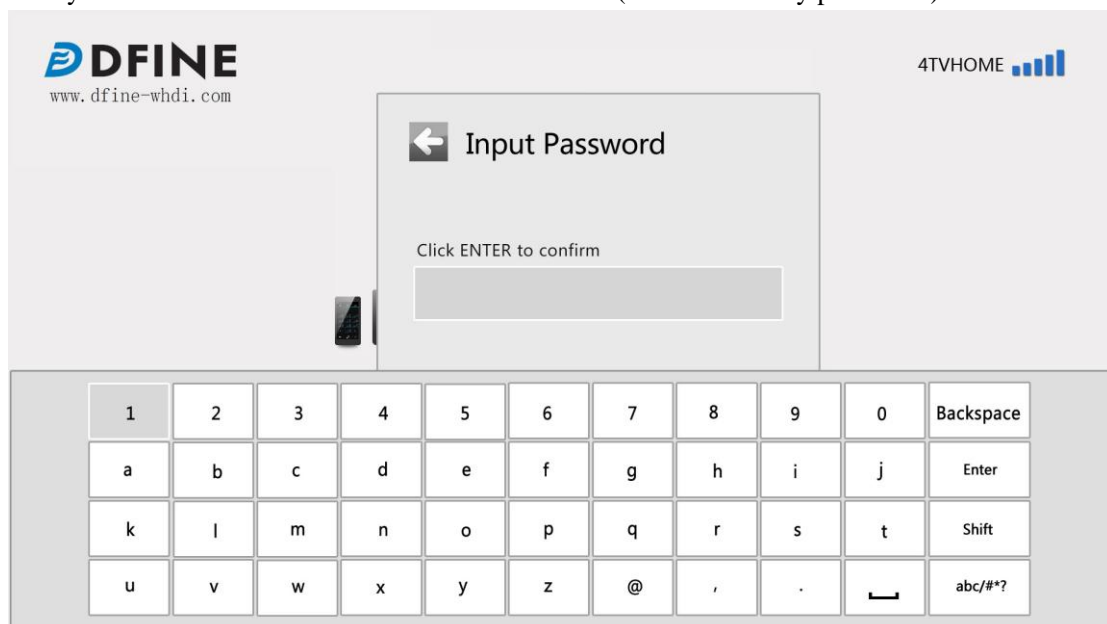
You can configure network by the following steps:

- a) Use remote control to go to setup item.
- b) Use navigation button **【up】** and **【down】** to locate “WIFI” item(as illustrated by picture 18);



Picture 18 Wireless Network List

- c) Use navigation button **【up】** and **【down】** to locate desired wireless network;
- d) Press OK button to confirm;
 - 1) If the wireless network that you want to connect is protected with a password, the password input screen will be shown. Use the navigation buttons to move the selection cursor and press the **【OK】** button to input the selected character. Submit password and system will connect to selected wireless network. (As illustrated by picture 19).



Picture 19 Password Input Screen

- 2) If desired wireless network had been connected successfully before or is not protected by

- a password, system will connect automatically.
- 3) Use **【Return】** button on remote control to close password input screen and cancel wireless network connection.
 - e) When system is trying to connect wireless network, connection video and network status will be shown on the screen.
 - f) When network is successfully connected, connection mode will be switched to LAN mode.
- 1) If system prompts wrong password, please input password again.
 - 2) If wireless network connection is failed, system will try to connect other wireless network that has been connected successfully before. If system cannot connect any wireless network ,system will switch to AP mode automatically

4.1.4.3 Device Name Modification

Wireless media box had been set to a default name when it was manufactured. Users can rename the device using the remote control:

- a) Ensure system is on home screen.
- b) Press **【Menu】** button on the remote control to show the setup menu.
- c) Select subsidiary “system setting “item.
- d) Press **【OK】** button to show subsidiary item of system setting.(As illustrated by picture 20)
- e) Use the navigation buttons to move the selection cursor and press ok button to input the selected character. After name input is complete, use the navigation button to locate the enter key and press the **【OK】** button to submit the name.
- f) 4TV box will return to home screen and the new name will be shown on the top right corner.



Picture 20 Device Name Modification

Please note: you can press **【Return】** button on remote control to cancel setup operation.

4.1.4.4 Change Audio Output

You can set audio output mode by remote control and switch it between HDMI, microphone

and SPDIF as follows:

- a) Ensure home screen is displayed.
- b) Press **【Menu】** button on remote control to show setup items;
- c) Use navigation button to locate **【system setup】** item;
- d) Press **【OK】** button to enter into subsidiary items;
- e) Use navigation buttons to locate 'Audio Output Selection' item, and press **【OK】** button to show audio output setting interface;



Picture 21 Audio Output Setting

- f) Use navigation buttons on the remote control to move the selection bar to select the targeted output mode.

4.1.4.5 Language Setting

The wireless media box supports multiple languages. Currently it supports English, Simplified Chinese, Traditional Chinese, and Japanese. You can change the system language using the remote control.

- a) Make sure home screen is displayed.
- b) Press **【Menu】** button on remote control to show setup menu.
- c) Use navigation button on remote control to locate “system setting” item.
- d) Press **【OK】** button to show subsidiary item.
- e) Use navigation button to locate “language setting” item and press **【OK】** button to show language setting interface.



Picture 22 Language Setting

- f) Use navigation button to choose desired language and press **【OK】** to confirm.

4.1.4.6 Device Information Search

you can click **【about device】** to get to know device information by the following procedures:

- Ensure home screen is displayed;
- Press **【Menu】** button on remote control to show setup items;
- Use navigation button to locate **【about device】** item;
- Press **【OK】** button to show system information.



Picture 23 Device Information Interface

4.1.4.7 Screen Keyboard User Guide

Screen keyboard will be displayed automatically when you configure wireless network and modify device name.

1	2	3	4	5	6	7	8	9	0	backspace
a	b	c	d	e	f	g	h	i	j	enter
k	l	m	n	o	p	q	r	s	t	shift
u	v	w	x	y	z	@	,	.	⏏	abc/#*?

Picture 24 Screen Keyboard

Infrared remote control user guide

- Press navigation button **【up】** **【down】** to move cursor .
- Press **【OK】** to submit selected item.

Other buttons description:

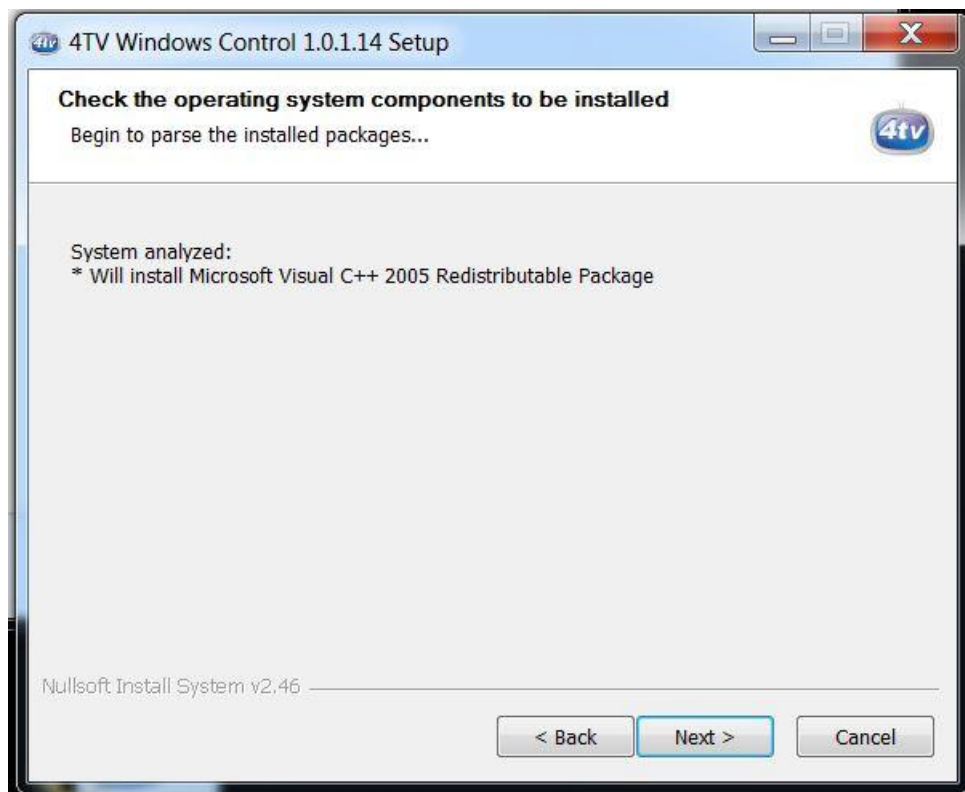
- Backspace **backspace** : to delete previous character;
- Enter **enter** : to submit
- Shift **shift** :to switch capitalized character and lowercase.
- abc/#*?** : To switch English characters and symbols.

4.2 Windows Client Control Application User Guide

Windows client control application is software that runs on windows computer. It can help users to play Windows computer media items on display equipment or you can transmit all contents filled Windows computer screen to display equipments through Mirror Function.

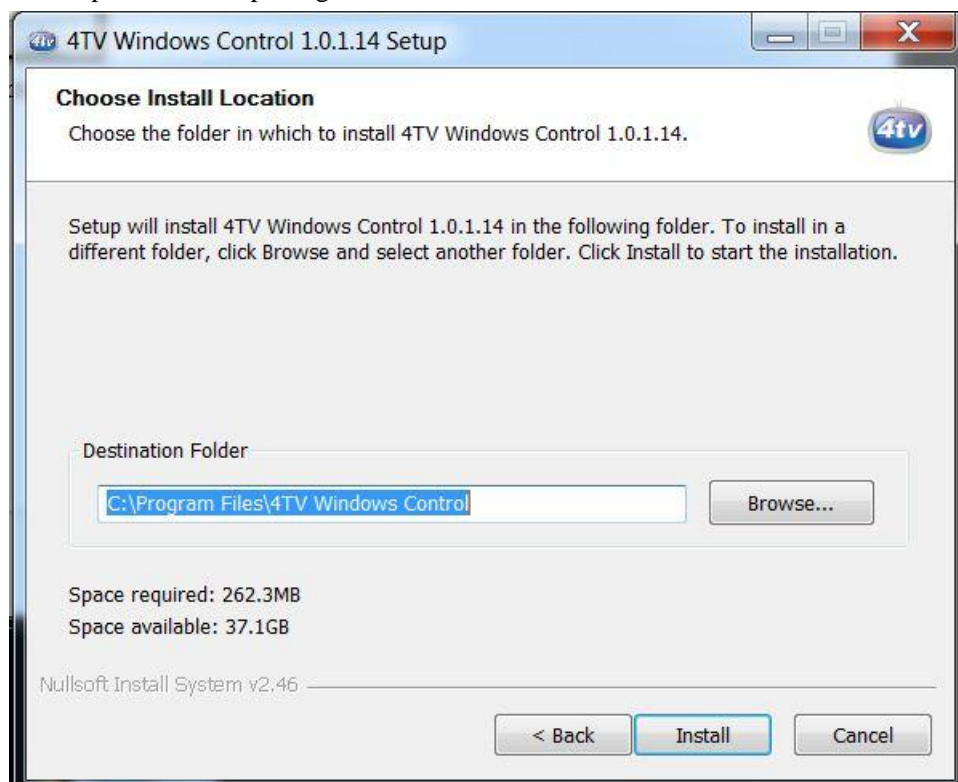
4.2.1 Software Installation

- Double click 4TV windows application to run it.
- If your computer's OS is Windows 7 or Vista and UAC alerts you that the setup application needs permission to run it, click the **【YES】** button to continue.
- You can select the installation language to guide your operation.
- Click **【Next】** to continue your installation.
- When the license information is displayed, click the **【I AGREE】** button to continue.
- System will check if Visual C++ 2005 Redistributable Package, if it needs to be installed, screen will be shown as follows:



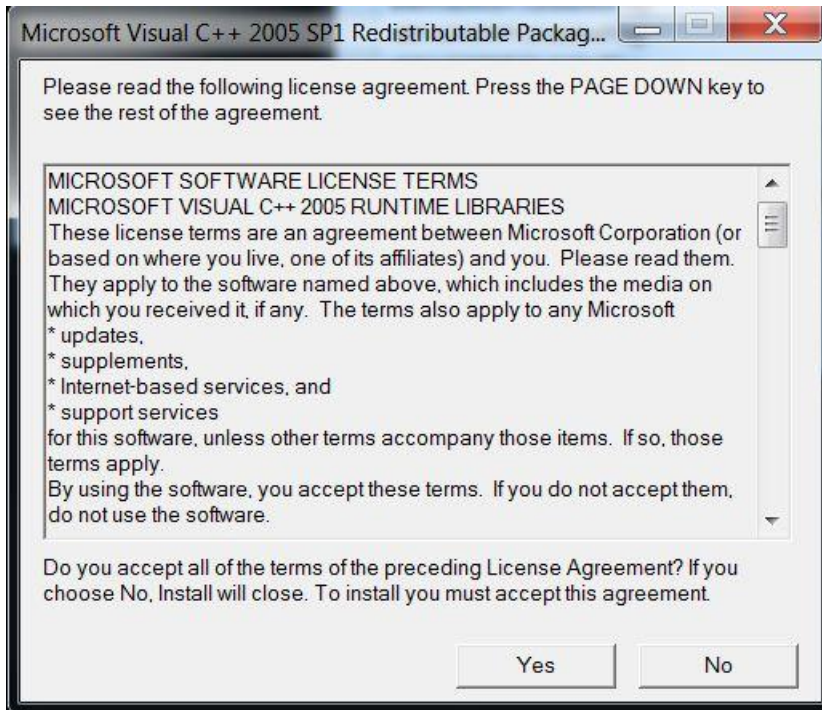
Picture 25 System didn't Install VC Package

- g) Select path to install package, and click **【Installation】** to continue;



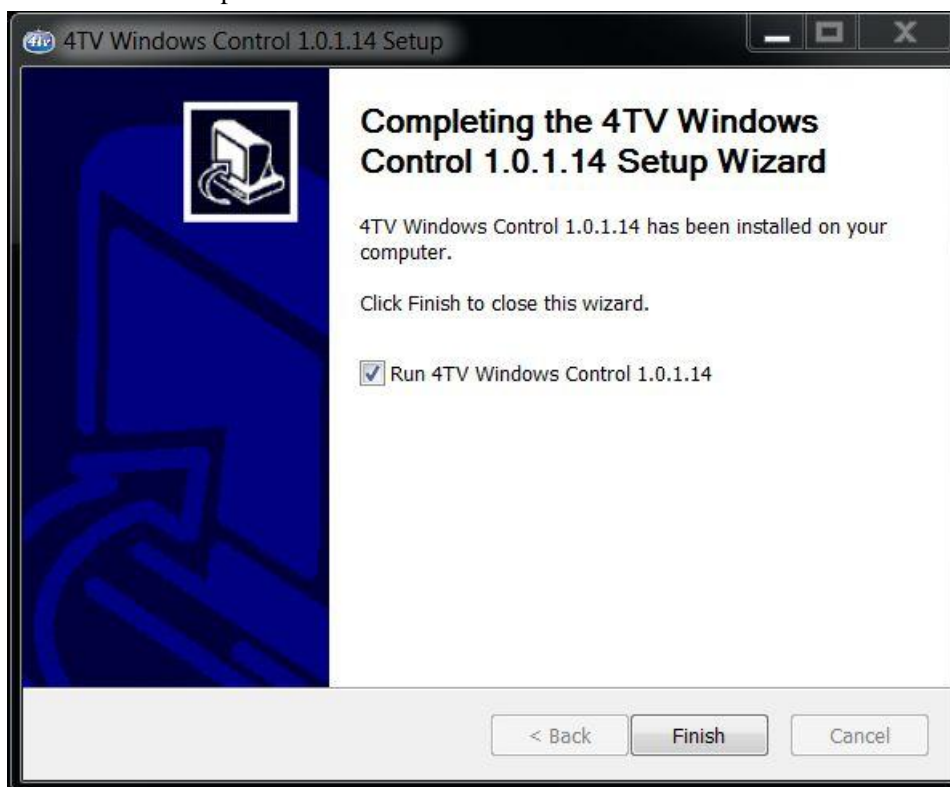
Picture 26 Select Installation Path

- h) If system don't have VC package, system will prompts install it or not .click **【Yes】** to continue;



Picture 27 Installation of VC Package

- i) Installation is complete



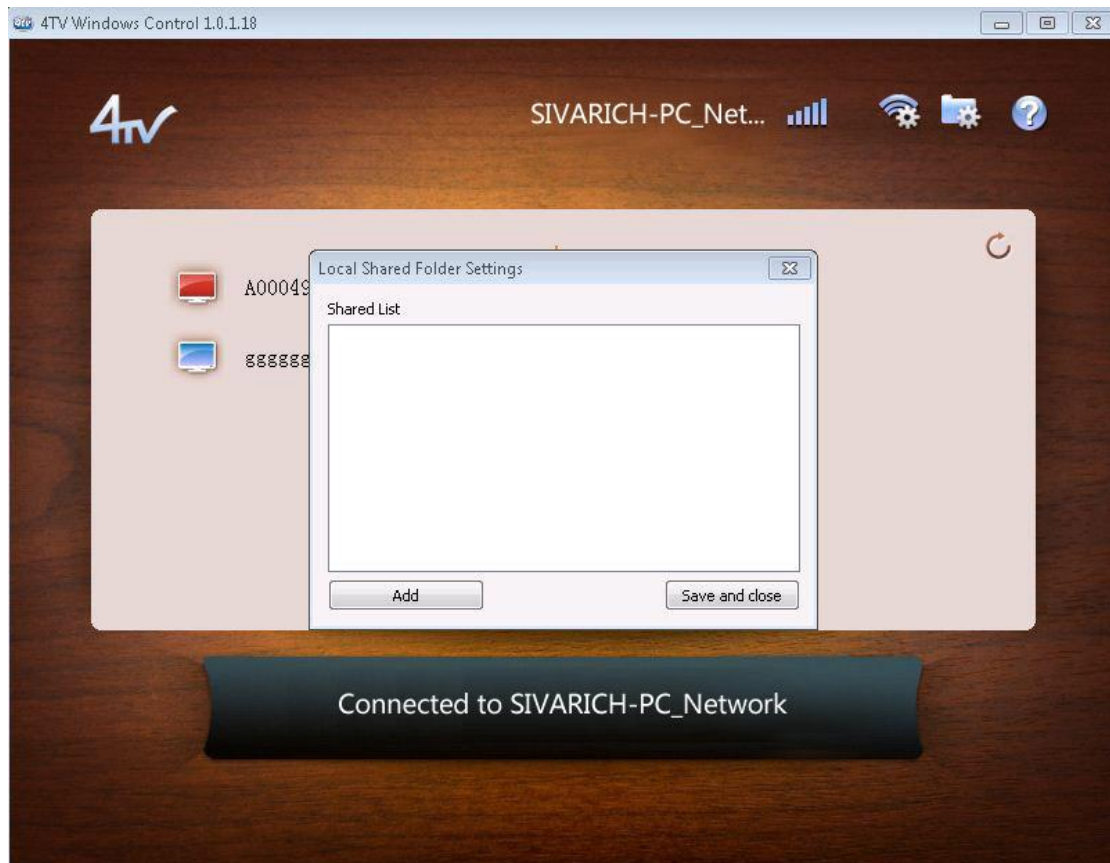
Picture 28 Installation is Complete

4.2.2 Connection and Operation

You can double click the "4TV Windows Control" shortcut icon to run the application manually.

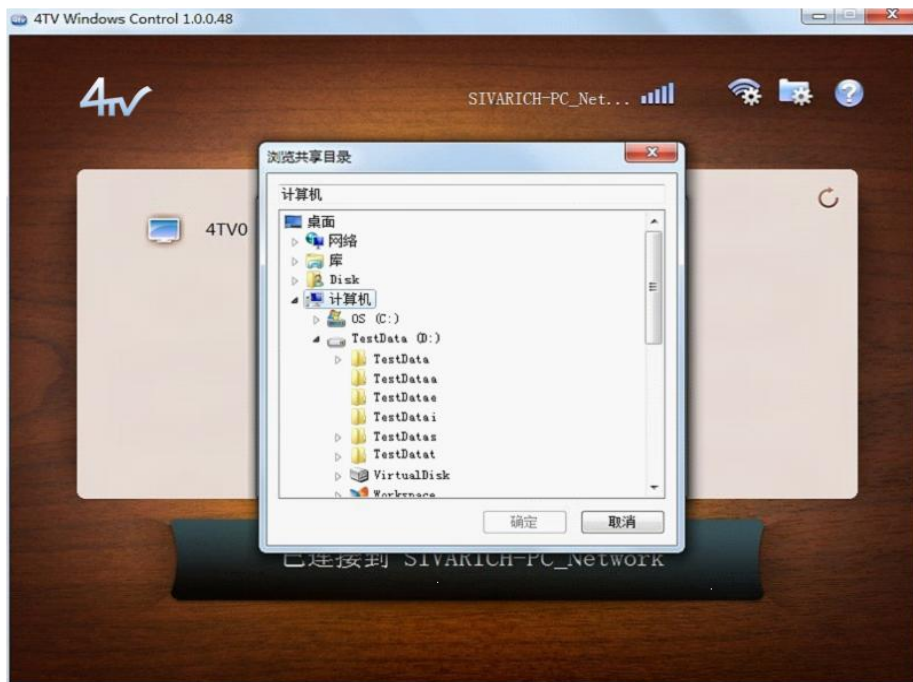
You can follow steps listed below to run the application exemplified by Windows 7.

- a) Ensure devices are connected to wireless network..
- b) Ensure it is the same wireless network.
- c) Run 4TV windows control. If the windows firewall or other third party firewall allocations alert that the 4TV windows control requires network access , you should click the **【YES】** button to allow the application to connect to the network.
- d) For first time users, the “Local Shared Folder Setting” window will be shown automatically. In the “Local Shared Folder Setting” window, you can add or remove the folder that contains media files you want to play remotely.




Picture 29 Local Sharing Folder Setting

- e) You can also set the sharing folder by clicking the **【sharing folder management】** button while the 4TV Windows Control application is running and select desired folder by clicking **【add sharing folder】** .



Picture 30 Add Sharing Folders

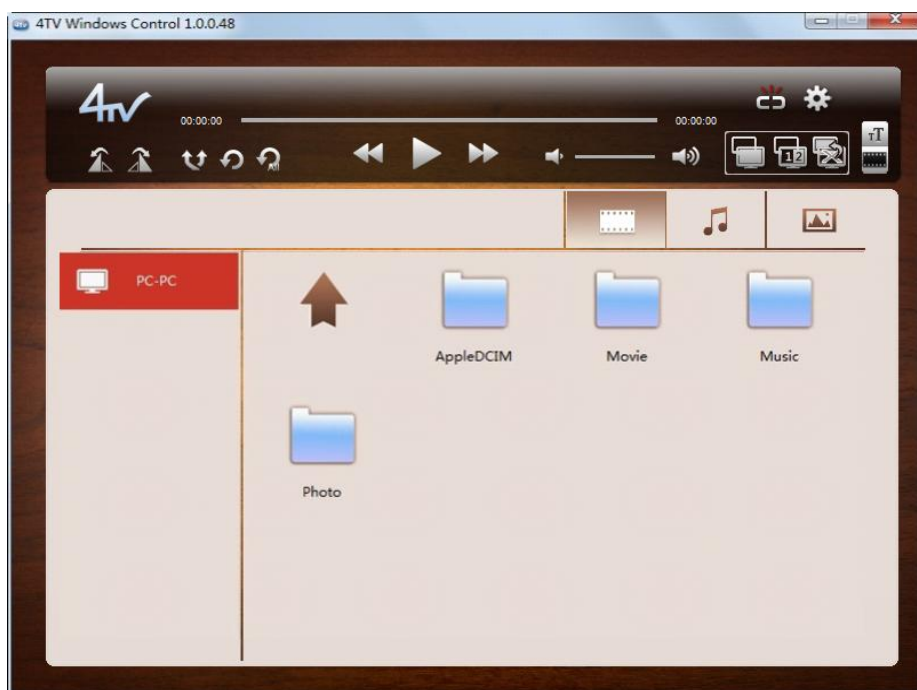
f) 4TV Windows Control Display Information:

Blue icon (): indicates this device is available;

Red icon (): indicates this device is occupied.

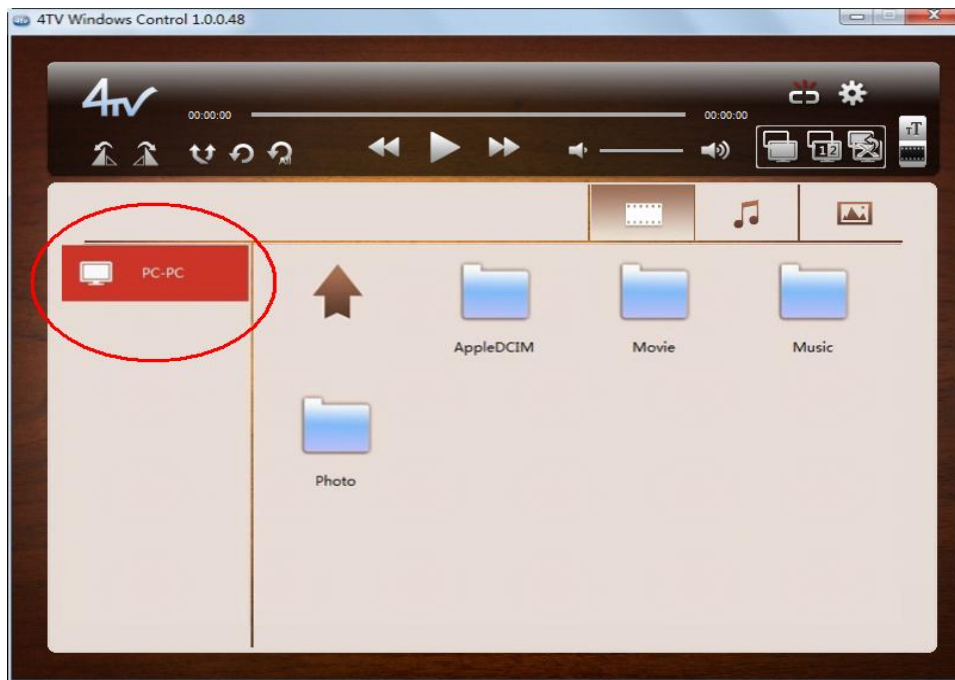
Move mouse cursor to 4TV control application icons, its information will be shown.

g) Double click available device icon to connect. The play window will be displayed after the device is connected to the 4TV device.



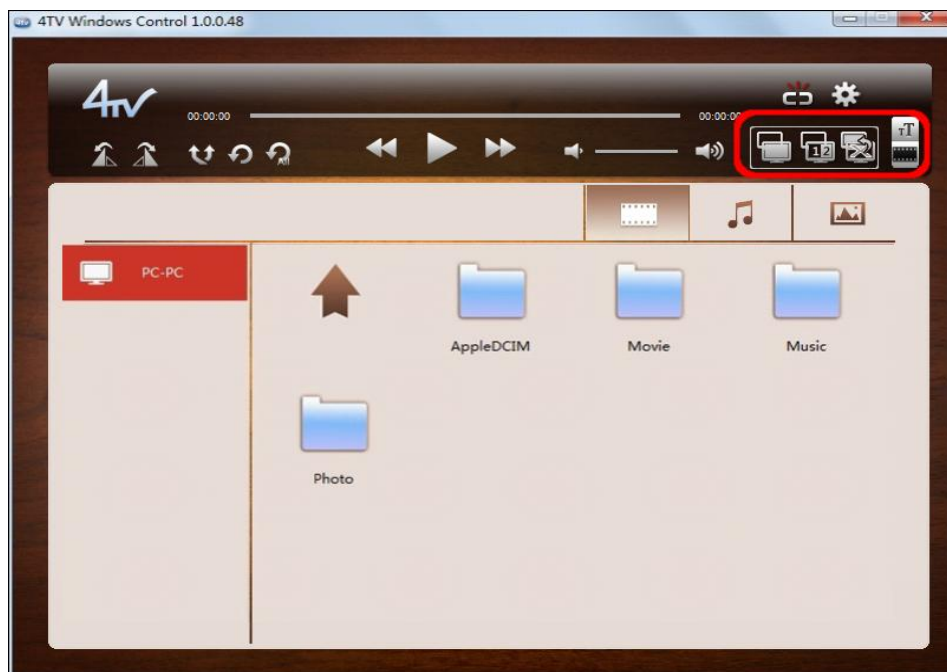
Picture 31 Play Screen

- h) You can select local media files to play in this window;



Picture 32 Media Files Selection

- i) Click the category tab buttons to change the media category (movie/music/photo).
j) Double click preferred video files to play.
k) In the “Play” window, you can click the mirror button (marked by red circle) to show all the contents in your Windows computer on the 4TV device.



Picture 33 Mirror Function

Please note: main type and extend type can be only operated on windows7 operating system.

- l) Click specific mirror button to exit mirror function and home screen will be shown.
m) In the “play” window, you can disconnect the 4TV device by clicking the **【Disconnect】**

button.

Please note: the above operation procedure is based on LAN mode. If system is under AP MODE, procedure is almost the same.



4.2.3 Operation Interface Description

4.2.3.1 Device List Interface



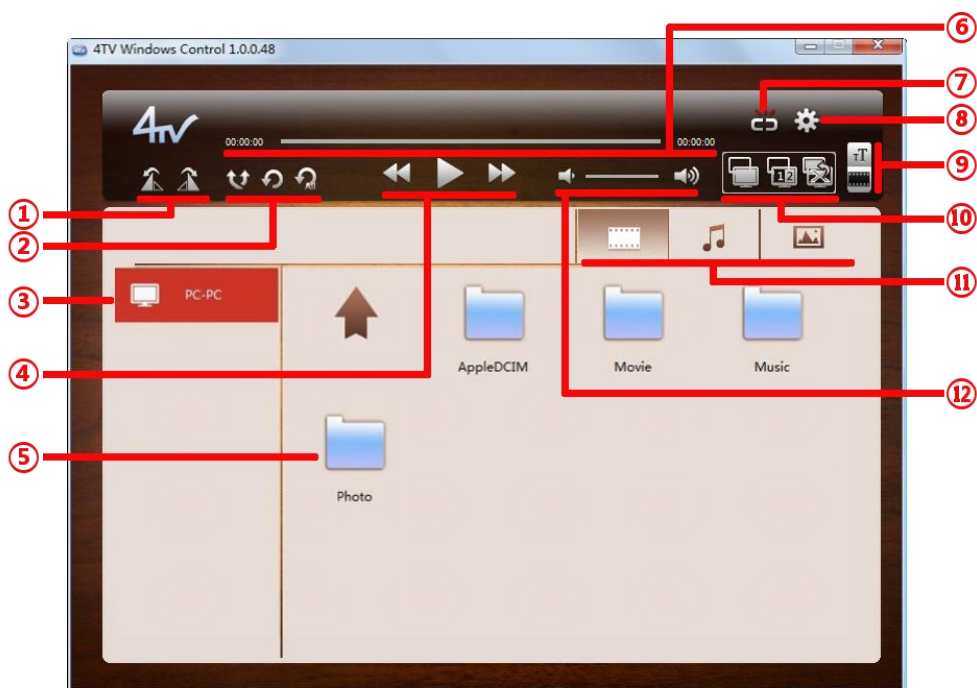
Picture 34 Device List Interface

Table 1 Description of Device List Interface

Number	Function	Description
①	Device list	1) To display devices that have connected to a same wireless network 2) Device icon:  — available;  — device is occupied.
②	Status information	To display network status, process of connection, wrong information.
③	Local sharing folder setup	To show local sharing folder setup screen
④	Help	A link to website
⑤	Wireless network configuration	To show all wireless network and switch wireless network
⑥	Refresh device	Refresh devices list that connected to a same






	list	wireless network
⑦	Network information	To display connected network information







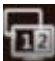
4.2.3.2 Playing Screen



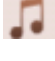

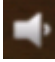
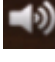


Picture 35 Playing Screen

Table 2 Description of Playing Screen

Number	Function	Description
①	Picture rotating	To rotate picture: <ul style="list-style-type: none"> ●  rotating to left 90 degrees ●  rotating to right 90 degrees
②	Play mode setting	To set play mode. You can play desired audio item by clicking its icon. <ul style="list-style-type: none"> ●  play at random ●  loop mode ●  media items list circulating
③	Media item list	<ul style="list-style-type: none"> ● To show all the available media items. Default item is the first one.

		<ul style="list-style-type: none"> ● It also includes the entire item in U flash disk that connected to device. ● Click media item to switch to other media items.
④	Process control	<ul style="list-style-type: none"> ●  to play previous media items ●  to play or pause a media item ●  to play next media items
⑤	Media item list	<ul style="list-style-type: none"> ● All items that are listed in device that are connected to system ● Click this icon to select media item ● Double click this icon to play it <p>Please note: mirror function will be automatically off when to play a media file.</p>
⑥	Process information	<p>To show playing process and control process</p> <p>Please note: no information when picture is playing</p>
⑦	Disconnect device	<p>Disconnect Windows control application and back to device list screen</p>
⑧	Setup	<p>To show setup screen and configure device information, such as device name modification, switch network mode</p>
⑨	Mirror function	<p>Switch mirror mode , default mode is video mode</p> <ul style="list-style-type: none"> ● : text mode , for text input and display. ● : video mode , for video display. <p>Please note :</p> <ol style="list-style-type: none"> 1) This buttons are effect when mirror function is on 2) When device is connected to mouse, it will switch to text mode automatically.
⑩	Mirror function display	<p>Enter into or get out of mirror function.</p> <ul style="list-style-type: none"> ● : main type: If main type is selected, the main screen content will be outputted to the 4Tv device ● : Extent type: if extend type is selected, an extend screen will be enabled on the Windows PC and its content will be outputted to the display

		<p>equipments. (only available in Windows 7 OS).</p> <ul style="list-style-type: none"> ● : beamer type: It will transmit all contents in Windows device screen to display equipments(only for windows 7 OS) <p>Please note:</p> <ol style="list-style-type: none"> 1) It can control windows devices by USB mouse. 2) No video will be outputted in windows XP system
⑪	Media category	<p>You can select the media server by tapping on the corresponding item. All media files under the root directory of the media server will be listed.</p> <ul style="list-style-type: none"> ● : to show video items. ● : to show audio items. ● : to show picture items.
⑫	Volume control	<ul style="list-style-type: none"> ● : volume down. ● : volume up.

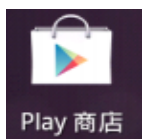
4.3 Android control application user guide

You can use client control application on Android devices and transmit files on Android device to display equipment by 4TV.

4.3.1 Software Installation

You can download free 4TV Android control application at Android app market. The following operation procedures are under HTC DesireHD (Android OS 2, 2).

- Run mobile network connection and click play shop application icon.



Picture 36 Play Store

- Category screen will be shown and click search icon.



Picture 37 Application Category

- C) Input “4TV” in search and press enter to start searching.
- d) Click “4TV-Android Controller” item.

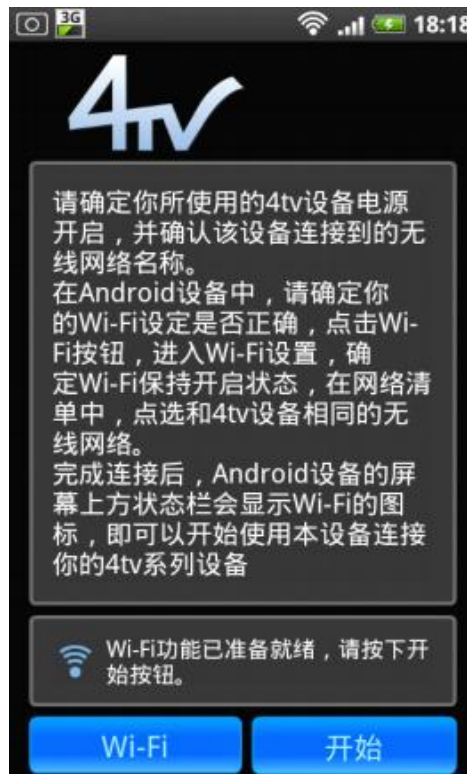


Picture 38 Searching Results

- e) Click download to download control application.
- f) System will start downloading.
- g) Installation will be conducted automatically after downloading.

4.3.2 Connection and Operation

- a) Click 4TV-DMC icon to run application.
- b) 4TV Android application starts booting.
- c) When the application starts, the “network connection guide” will be shown first. It will guide you on how to check the connected wireless network and how to connect to a specific wireless network.



Picture 39 Wireless Network Connection

- 1) If you want to switch wireless network, press **【WI-FI】** button to enter into Android wireless network control screen to set.
 - 2) If the WIFI is connected, click **【Start】** button to continue.
 - 3) If something got wrong with wireless network or it is not connected, **【Start】** button will be shown as red.
- d) You can find all the devices that connected to the same wireless network as the Android phone.



Picture 40 Device List

- 1) Green device icon indicates device is available. If it is occupied, color of icon would be red.
- 2) If no device is detected by system, prompting information will appear.
- 3) Click **【Refresh】** to refresh device list.
- e) Click device icon to connect desired device.



Picture 41 Device Connection

You can click **【Cancel】** button to exit device connection

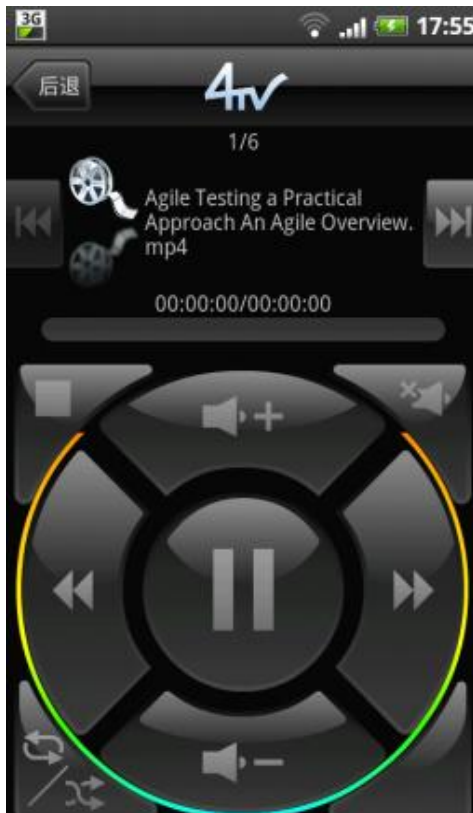
- f) Media files list will be shown after connection and you can select desired media files to play.









Picture 42 Media Server List

- g) You can select the media server by tapping on the corresponding item. All media files under the root directory will be listed.
- 1) Category button: video/music/photo

- 2) Item list below video, audio, picture category
- h) When you tap on a video or music item, the playing screen will be shown.



Picture 43 Playing Interface

- 1) : to control the media item playback or pause.
- 2) : stop playing media files.
- 3) : volume control.
- 4) : to control the media item playback.
- 5) : to play previous/next media item.
- 6) : click the loop buttons to switch the loop mode.

4.4 DLNA support

Apart from 4TV Control Application (Windows/Android/iOS), Wireless Media Box also supports applications that are compliant with DLNA standard.

There are many third party application that compliant with DLNA standard at the market, such as Windows Media Player, Clear.fi running at Windows Operating system ; iMediaShare, Tencent Video running at Android system; iMediaShareLite running at iOS system. You can choose whatever you like to visit 4TV device.

5. Software Update

User can get software updated by the following procedures(a U flash disk is needed):

- a) Get official update package named autoup.rom. If it is compressed file, decompress it and get ROM files.
- b) Ensure U flash disk system is FAT or FAT32. if it not, format U disk and select FAT or FAT32;
- c) Copy autoup.rom file to your U flash.
- d) Insert the U flash to device when device is off.
- e) Turn the device on and system will get updated automatically. Please note: power should not be off when update.
- f) Update information will be shown.

6. Troubleshooting

Before you follow the steps, please check if power is switched on and device is correctly connected.

- Why can't my 4TV device be connected to the wireless network automatically?
For first time users, the 4TV device works in AP mode by default. You need to configure the wireless network setting for it.
- Why windows system will alert users to choose network for the first time in AP mode?
When windows system is connected to device for the first time, it's the same as accessing a new network, so windows system will alert users to choose network.
Please select family network in network setup screen.
- Why can't I find my 4TV device on the 4TV Windows control application?
Please make sure your windows computer and the 4TV device have been connected to the same wireless network. Otherwise, the 4TV Windows control application can not find the device.
- Why can't I play my media file on the 4TV device using the 4TV windows control application?
If you did not authorize the 4TV Windows control application to connect to the network, the Windows firewall or other third party firewall application will block the communication between the application and the wireless media box.
When you used it the first time, there should have been an alert that the windows control application is requiring access to the network. If you did not authorize before, you need to run the firewall application and add exception settings for the 4TV windows control application.
- Why is it so hard for my wireless media box to connect with the windows control application?
When the 4TV device works in LAN mode, the connection would be vulnerable to any interference in WIFI signal. Please check the WIFI signal is too weak; please change to another wireless network.
- Why is video playback not fluent?
The communication quality depends on the status of the wireless network. If the network is

heavily overloaded, the playback operation will suffer interference.

- Why isn't the mirror function fluent on Windows device?
Windows control application will get screen parameter automatically. On most windows devices, this parameter will work, but they might be needed to be adjusted in some devices.
- Does the device can be connected to a U flash disk with a format NTFS?
The system can read U flash disk with format NTFS, but can't use it for software update.
- Why is my CPU get overloaded when play HD video?
It concerns with video code stream and computer configuration. If video code stream is more than 15M, windows control application will occupy a lot of CPU.
- Why does buffering take a lot of time when system is plying 1080p video?
Please check the configuration of your router and wireless networking card. If they are adjusted to 802.11g, buffering will take a lot of time. Please configure them to 802.11n.
- Why does extend mirror function and beamer mirror function not work on my Windows computer and no sound is outputted?
Extend function and beamer mirror function can be only operated under Windows7 operating system.
- Why can't my system get updated automatically?
First please check if version number of update package is the same as the system version. U flash disk should be FAT or FAT32. Make sure U flash disk is correctly inserted into 4TV devices, then restart the device and run update software again.

7 FCC ID warning

Changes or modifications not expressly approved by the party responsible for compliance could void the user's authority to operate the equipment.

This equipment has been tested and found to comply with the limits for a Class B digital device, pursuant to Part 15 of the FCC Rules. These limits are designed to provide reasonable protection against harmful interference in a residential installation. This equipment generates, uses and can radiate radio frequency energy and, if not installed and used in accordance with the instructions, may cause harmful interference to radio communications. However, there is no guarantee that interference will not occur in a particular installation.

If this equipment does cause harmful interference to radio or television reception, which can be determined by turning the equipment off and on, the user is encouraged to try to correct the interference by one or more of the following measures:

- Reorient or relocate the receiving antenna.
- Increase the separation between the equipment and receiver.
- Connect the equipment into an outlet on a circuit different from that to which the receiver is connected.
- Consult the dealer or an experienced radio/TV technician for help.

This equipment complies with FCC radiation exposure limits set forth for an uncontrolled

environment. This equipment should be installed and operated with a minimum distance of 20cm between the radiator & your body. This transmitter must not be co-located or operating in conjunction with any other antenna or transmitter.

This device complies with Part 15 of the FCC Rules. Operation is subject to the following two conditions: (1) this device may not cause harmful interference, and (2) this device must accept any interference received, including interference that may cause undesired operation.

8 Other Information

We suggest a comprehensive read about this manual before you get started to use this product.

Software update package and user manual can be accessed on website

www.define-WHDI.com

If any problem occurs, please feel free to contact us at:

Mail: support@dfine-WHDI.com

Telephone: +86-28-85306133