

WASHING INSTRUCTIONS

1. Remove batteries & heater from vest
2. Hand was recommended in cold water
3. Do not wring out heat element- only drip dry

WARNING-DO NOT

1. Leave batteries connected whilst not in use
2. Wear whilst sleeping
3. Leave watch turned on when not in use- this will flatten watch battery
4. Connect batteries if connectors are wet

BATTERIES

1. Watch battery uses 3v – lithium coin battery- recommend to use watch repairer to replace
2. Lithium polymer batteries – 7.4v per pack – 2 packs per unit – charge these every month
When not in use- this will preserve life.
3. Have overcharge protection fitted - OCP

QUICK PROBLEM FIXES

1. Signal failure – if you cannot get signal to work with vest – try step 3 again
2. Signal failure – if you cannot change setting or turn off whilst wearing –
Press button & hold arm outstretched to the side of body

MAINTENANCE

1. Ensure to spray 2 pin connectors after use with wd-40 or similar product
If using in saltwater- this will preserve the life of pins
2. Ensure watch is turned off when not in use

WATERPROOF LIMITS

The watch is rated to 10 mts underwater
The heater is rated to 30 mts underwater
Watch can be left on shore or boat after turning on vest

WARNING

***GOLF VEST - DOES NOT INCLUDE WATERPROOF BATTERIES- UPGRADE
TO WATERPROOF BATTERIES IF REQUIRED FOR UNDERWATER USE

***NOT RECOMMENDED FOR CHILDREN UNDER 15 YEARS



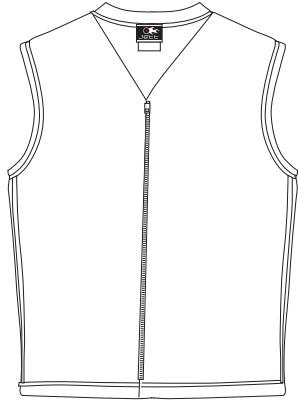
JETT Australia
www.jett.com.us
sales@jett.us.com

Ph. +61 3 9877 7855
Fx. +61 9877 3599

12 Months Warranty on, Heat Element, Watch & connectors
6 Months Warranty on, Rechargeable Battery

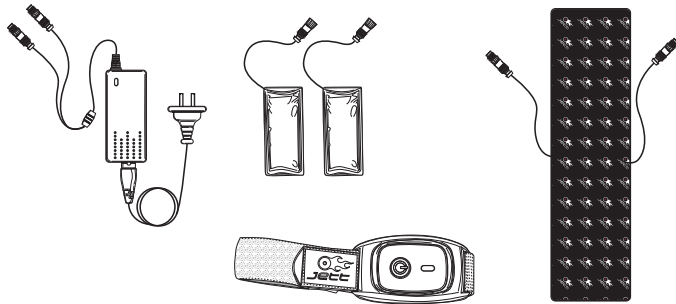


REMOTE HEAT VEST USER MANUAL



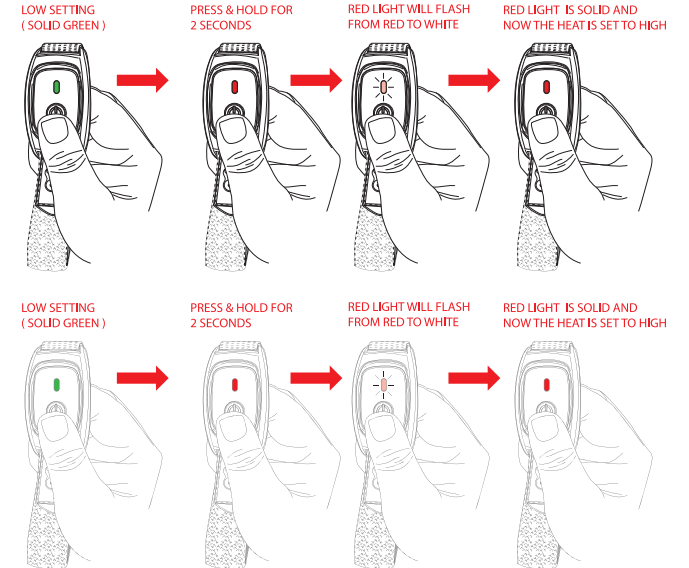
**Unpack Contents from Box.
You should have the following content :**

- 1 x Heat Vest
- 1 x Heat Element
- 2 x Rechargeable Battery Packs
- 1 x Remote Control unit
- 1 x Wall Charging Unit



**STEP 4 CHANGING HEAT SETTINGS
2 SETTINGS – HIGH & LOW**

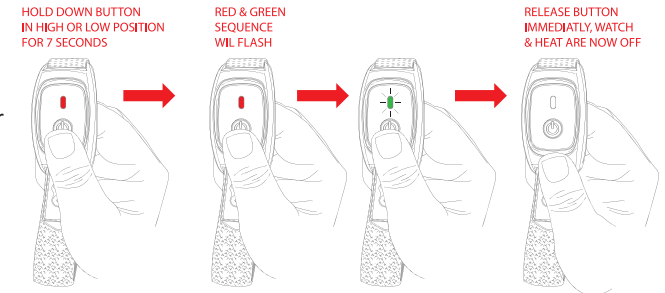
1. Press watch button down again for approximately 2 seconds only, “red” light will flash
2. Flashing red light will then turn solid red, this is “high” setting
3. Repeat this procedure to change back to “low” setting
4. This is how to change settings from high to low & low to high



****PLEASE NOTE THAT SOLID LED LIGHT WILL AUTOMATICALLY START TO FLASH AFTER 20 SECONDS –THIS WILL CONSERVE BATTERY CONSUMPTION IN WATCH**

STEP 5 TURNING HEAT “OFF”

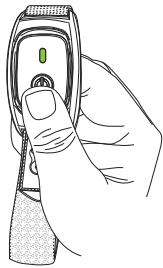
1. Hold button down on watch for approximately 7 seconds, “Red & green” sequence will appear
2. Release button immediately
3. Watch & heat should now turn off



STEP 3 PAIRING WATCH TO HEAT ELEMENT (Continued) (SHOULD BE A ONCE ONLY OPERATION)

4. Immediately stop pressing button & connect batteries to heat vest connectors

5. Wait until a green light starts flashing & then turns solid green on watch led

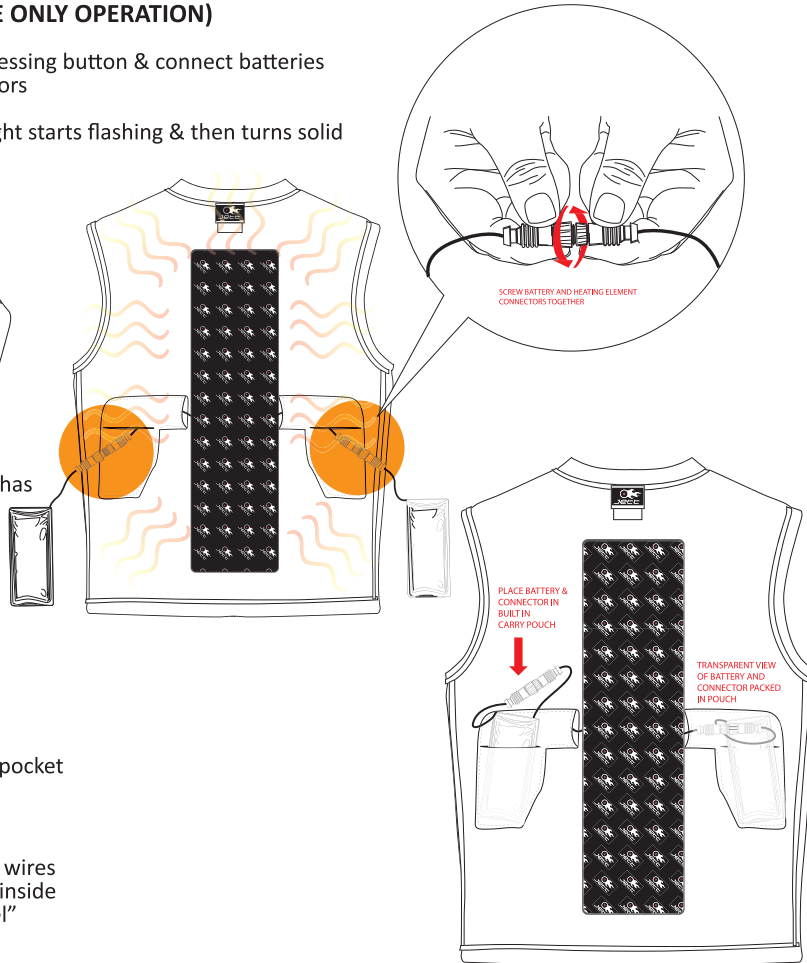


6. This means the vest has successfully paired with watch

7. Feel heat element & you should be able to feel the heat, this is "low setting"

8. Squeeze batteries though pocket slits & inside pocket

9. Adjust connectors & wires to slide comfortably inside upper pocket "tunnel"



STEP 1 CHARGING BATTERIES CONNECT BATTERIES TO CHARGER

1. Align 2 pin battery connectors with charger Connectors they will fit in slot when aligned.

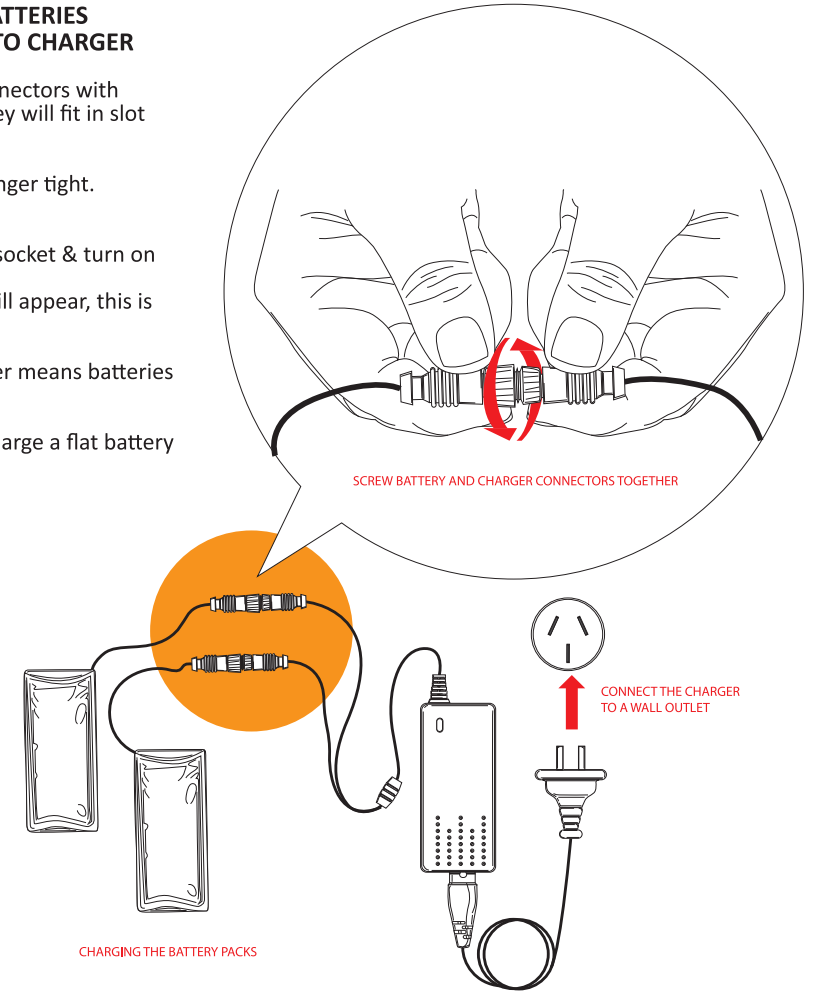
2. Screw together until finger tight.
Do not force!

3. Plug charger into wall socket & turn on

4. Red light on charger will appear, this is charging mode

5. A green light on charger means batteries are fully charged.

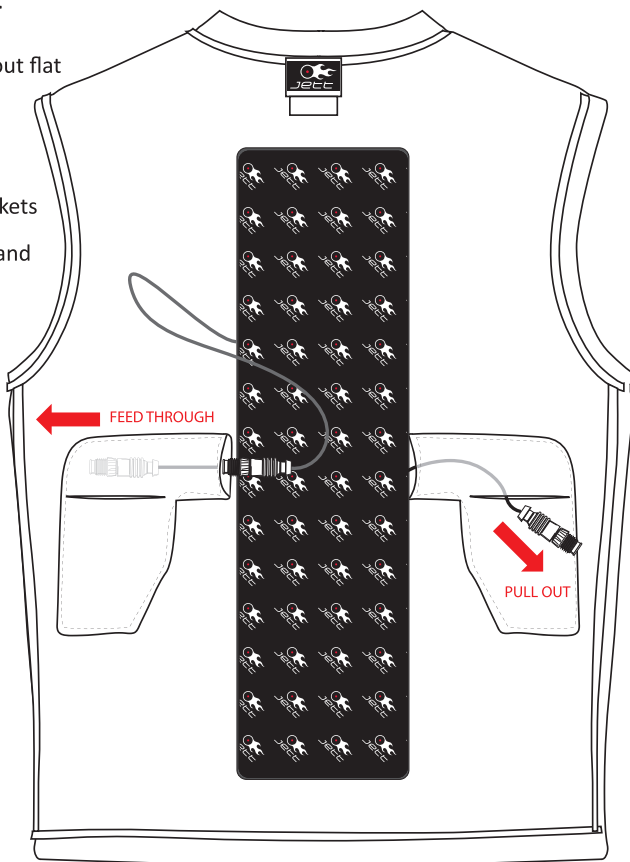
It takes 3-4 Hours to charge a flat battery





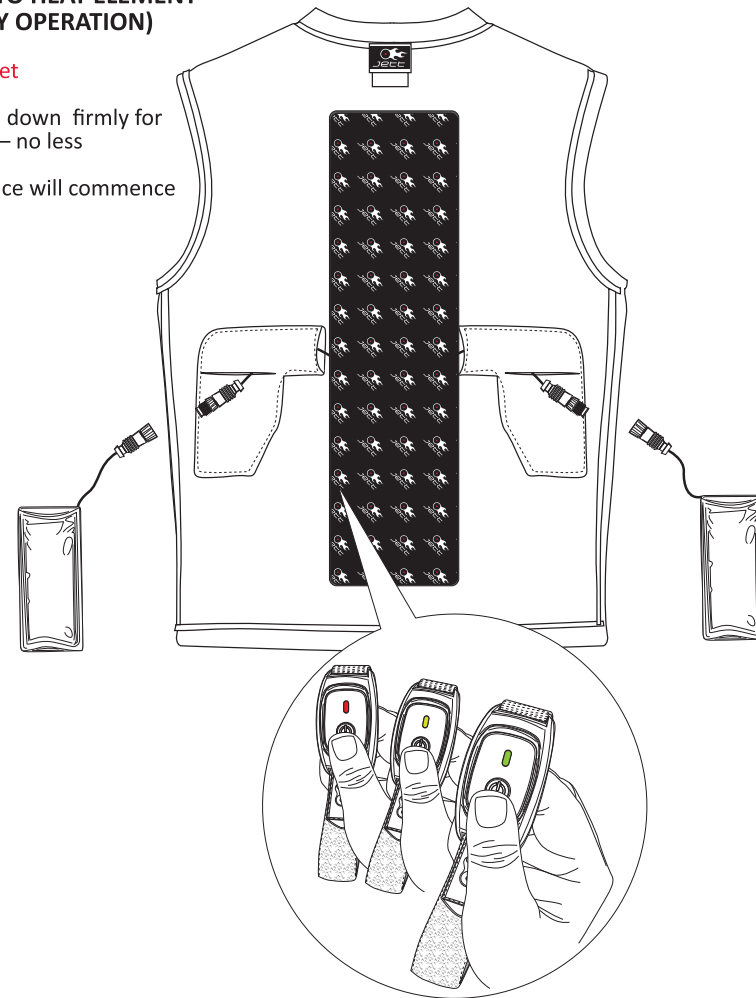
STEP 2 INSERTING HEAT ELEMENT INTO VEST PLACE HEATING ELEMENT DOWN ONTO THE SPINAL COLUMN OF THE HEAT VEST

1. Remove vest from packaging and lay out flat
2. Turn vest inside out & lay flat with battery pockets side facing up
3. Hold element over vest first & align connectors with "tunnel" ends on pockets
4. Place element flat between pockets and press firmly so velcro sticks securely
5. Thread connectors & wires through "tunnels", make connectors poke out of Pocket slits
6. You are now ready for pairing the watch with heat element



STEP 3 PAIRING WATCH TO HEAT ELEMENT (SHOULD BE A ONCE ONLY OPERATION)

1. Do not connect batteries yet
2. Hold watch & press button down firmly for approximately 17 seconds – no less
3. A green & red light sequence will commence on watch led



FCC Caution: Any changes or modifications not expressly approved by the party responsible for compliance could void the user's authority to operate this equipment.

This device complies with Part 15 of the FCC Rules. Operation is subject to the following two conditions: (1) This device may not cause harmful interference, and (2) this device must accept any interference received, including interference that may cause undesired operation.

This device and its antenna(s) must not be co-located or operating in conjunction with any other antenna or transmitter.

This equipment has been tested and found to comply with the limits for a Class B digital device, pursuant to part 15 of the FCC Rules. These limits are designed to provide reasonable protection against harmful interference in a residential installation. This equipment generates, uses and can radiate radio frequency energy and, if not installed and used in accordance with the instructions, may cause harmful interference to radio communications. However, there is no guarantee that interference will not occur in a particular installation. If this equipment does cause harmful interference to radio or television reception, which can be determined by turning the equipment off and on, the user is encouraged to try to correct the interference by one or more of the following measures:

- Reorient or relocate the receiving antenna.
- Increase the separation between the equipment and receiver.
- Connect the equipment into an outlet on a circuit different from that to which the receiver is connected.
- Consult the dealer or an experienced radio/TV technician for help.