

USB Flash Drive

User's Manual

V1.3.8

Introduction

Thank you for your purchasing the USB Drive. This manual will guide you through the usages of the USB Drive and of all management tools coming with it.

USB drive is a storage device with features such as light-weighted, shock-tolerable, and plug-and-play. By plugging it into the USB port of your PC or MAC computer, you can easily copy or move your data or files around without any external power supply.

The USB drive also supports security protection and can be formatted as a USB ZIP Drive, or as a boot-disk with Hard Disk Drive (HDD) format. With the help of the tools, you are able to partition a general purpose, or secure, or a boot USB disk. You can also readjust the capacities of each partition.

Features of the USB Drive:

- Support USB 2.0 specification
- Provide Hardware + Software dual level data protection
- 3 bytes (24 bit) real time hardware ECC to correct data errors
- Provide secure functionality
- Only Support administrator level security
- Provide both USB HDD boot and USB ZIP boot functionality (need PC motherboard's support)
- Support partition of general purpose, secure, or USB boot disk
- Support capacity readjustment of partitioned USB disk
- Provide Read/Write protection switch
- Work on both PC and MAC computers
- No driver needed (except windows 98)
- Plug and play, hot-removable
- No external power supply required
- Small size, light-weighted, shock-tolerable, portable
- Working environment: 0 °C ~45 °C
- Working power supply: 5V DC (supplied by computer through USB port)
- Operating Current: $\leq 80\text{mA}$

Precautions of Use

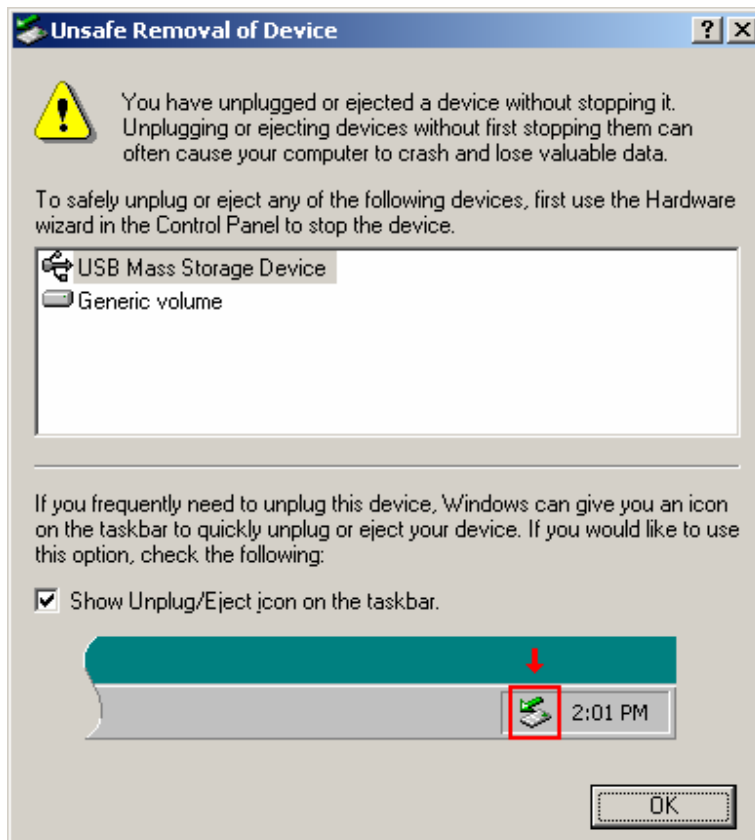
Please read this manual carefully before using this USB drive and all its accompany application tools in order for you to safely use this USB drive.

The following items will tell you how to operate this product correctly and safely. Please read carefully and make sure you understand the items before reading any other portion of this manual.



WARNING!

- Do not attempt to disassemble or change any part of this product. This manual does not include any information on disassembling or changing any part of the product.
- Do not immerse this product into water or any other fluid. In case water or any other fluid is purred onto this product, please pull it out immediately from the computer. Otherwise, the liquid may cause short of electrical connections and may further cause fire.
- Do not plug or unplug this product with wet hand since that may cause short of electrical connections and may further cause fire.
- Do not put this product close to fire or at locations with high temperatures.
- Do not put this product close to electromagnetical interference sources. Putting the product under electromagnetical interference may cause malfunction or data error or even lose of data of this product.



System Requirements:

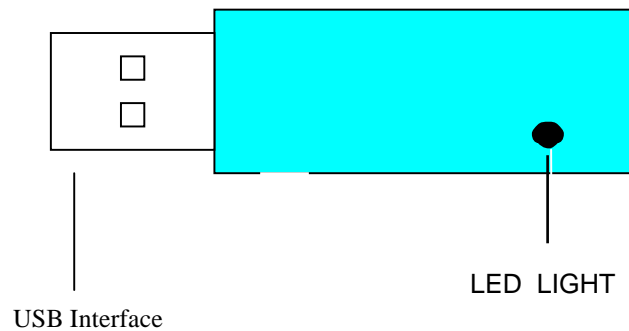
The followings are required for properly using this product or installing the software coming with it:

- Computer: IBM PC/AT or compatible, Power Macintosh, PowerBook, iMAC or iBook
- Operation System: Windows 98, Windows ME, Windows 2000, Windows XP, Windows Vista , Linux 2.4 and up, MAC OS 9.2 or up.
- Connection port: USB
- Minimum Hard Disk Drive space: 3 MB

Important Notice:

- Since there is no built-in Mass Storage Driver coming with Windows 98, you must install the driver which comes with this product in order to properly use the product under Windows 98.
- You can directly use this product on most of the platforms currently available. But, to properly use the application tools coming together with the product, you have to run the setup program which comes with this product. The setup program will automatically install the drivers required by the applications.
- All software programs coming together with this product can be run under Microsoft Windows OS, MAC OS, and Linux OS.
- The basic functions of the USB drive can be used under Microsoft Windows OS.

Descriptions of the Parts of the USB Drive:



- USB Interface: This is the connector to be plugged into the computer
- - when you stick USB into computer and the computer finds it, LED lights will light up once
- - after this, when the USB stick reads or writes data the lights will light up
- - the lights won't burn continuously

Installation

1. MS Windows 98 OS

- i. Start up your computer
- ii. Insert the accompanied CD-ROM disc into your CD-ROM drive of the computer
- iii. Plug the USB drive into a USB port of the computer
- iv. Windows will display the message “Find new hardware”. Please follow the windows steps to install the expected software from the CBUMSS directory of the CD-ROM drive until the process finishes.

2. MS Windows ME/2000/XP Vista OS

- i. Start up your computer
- ii. Plug the USB drive into a USB port of the computer
- iii. Windows will display the “find New Hardware” dialogue box and will indicate that the system will automatically install related drivers. You only need to click the OK button and let the computer find and install the proper driver for you.

3. MAC OS 9.2 or up

- i. Start up your computer
- ii. Plug the USB drive into a USB port of the computer
- iii. MAC OS will automatically detect the USB drive and install it

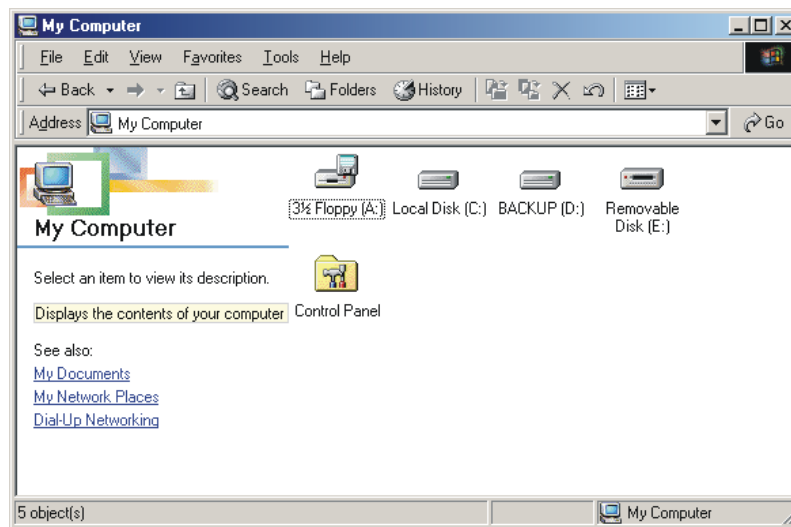
4. Linux Kernel 2.4 or up

- i. Start up your computer
- ii. Get into the root directory of your computer OS system
- iii. Plug the USB drive into a USB port of the computer
- iv. For installing the USB drive, please enter “mount/dev/sda1/mnt”
- v. For uninstalling the USB drive, please enter “umount/mnt”

Basic Operations

1. Plug In

After plugging the drive into the USB port of your computer, you can see the icon of the removable disk drive from the file system manager Windows Explorer, as shown in the following figure.



2. Read Data or Files

You can do any kind of operations on this USB drive just as you work on any Hard Disk Drive, such as file read, write, copy, or delete.

3. Unplug

After finishing your operations, you can unplug the device when the LED on the device is not quick flashing.

But for Windows WE and Windows 2000, you'd better follow the steps here to safely unplug your USB drive from your computer:

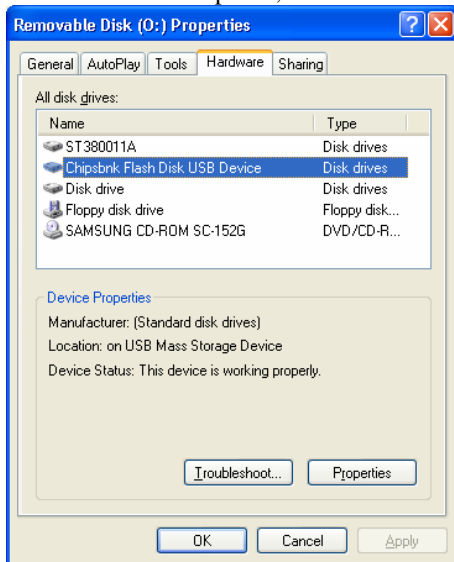
When you plug the device into the USB port of your computer, you can see the icon as shown in the following figure:



- Double clicking this icon, the “Safely Remove Hardware” dialogue box will show up.
- Select the device from the list in the box and press the “STOP” button. Then, the OS will promote you to confirm the removing operation.
- Click the “OK” button and you will see the “Safe to Remove Hardware” message. Now you are safe to unplug the device from your computer.

4、Improve Flash Disk Performance under Windows XP

1、Select Removable Disk device, click mouse right button, Select “Properties” button, and then Select “hardware” Option ;



(view 1)



(view 2)

2、Select Flash Disk Device and click “Properties” button, and then Select “Policies” Option; Then you can Select “Optimize for performance” option ;

3、Click “OK” button, you will Improve Flash Disk copy files speed.

Frequently Asked Questions

1. **Q:** When you insert the USB drive into your computer the first time, the system can not automatically find the device.
A: First, check whether you have tightly inserted the device into the port or not. If the connection is ok, one possibility is that, the port may not have been enabled by the settings in your computer's BIOS. Restart your computer and go into the BIOS Setup procedure and enable the USB port. Another possibility is that the USB driver in your computer system was not correctly installed, or the driver was correctly installed but has not been activated. In this case, please check the relevant user's manual and re-install the driver correctly if necessary.
2. **Q:** Does the USB drive have to be connected to a USB 2.0 port on the computer?
A: No. USB flash drive is downward compatible. You can use a USB 2.0 drive on USB 1.1/1.0 port, but the data transfer rate will be slowed.
3. **Q:** My computer has only a USB 1.1/1.0 port, how to access a USB drive with high speed data rate?
A: You can buy a USB 2.0 PCI card and install it onto your computer. Then use this new port to access your USB 2.0 drive with high speed data rate. You are still able to use your USB 2.0 drive on a USB 1.1/1.0 port with slower data transfer rate.
4. **Q:** When I first time insert the drive into my computer, the system recognizes the device as "Unknown Device" or other device. When I second time insert the drive into my computer, the installation prompt no longer shows up. So, how do I correctly install the driver software?
A: You only need to go into the "Device Manager" program, and remove the "Unknown Device" from there and then click the "Refresh" button. The system will return to normal shortly.
5. **Q:** What should I pay attention to when I plug or unplug the flash drive?
A: Do not unplug the drive just after you plug it into the USB port. Especially, do not repeatedly quickly plug and unplug the drive. Keep the interval between plug and unplug at least 5 seconds long.
6. **Q:** I am using Windows 2000, why there is only one partitioned flash disk drive icon on my computer?
A: Go to the relevant website and download the Windows 2000 Service Pack 3 and Service Pack 4 and install them into your computer. Then the two icons will show up.

- 7 、 If you need format the Flash Disk from Secure Disk to Secure Disk,At first you need formatted it to general Disk.,and then you can format it to Secure Disk.
- 8 、 If you need format the Flash Disk from Secure Disk to Boot Disk or Secure Disk,At first you need formatted it to general Disk.,and then you can format it to Secure Disk or Boot Disk.

FCC Statement

This device complies with Part 15 of the FCC Rules. Operation is subject to the following two conditions: (1) this device may not cause harmful interference, and (2) this device must accept any interference received, including interference that may cause undesired operation.

changes or modifications not expressly approved by the party responsible for compliance could void the user's authority to operate the equipment.

NOTE: This equipment has been tested and found to comply with the limits for a Class B digital device, pursuant to Part 15 of the FCC Rules. These limits are designed to provide reasonable protection against harmful interference in a residential installation. This equipment generates, uses and can radiate radio frequency energy and, if not installed and used in accordance with the instructions, may cause harmful interference to radio communications. However, there is no guarantee that interference will not occur in a particular installation. If this equipment does cause harmful interference to radio or television reception, which can be determined by turning the equipment off and on, the user is encouraged to try to correct the interference by one or more of the following measures:

- Reorient or relocate the receiving antenna.
- Increase the separation between the equipment and receiver.
- Connect the equipment into an outlet on a circuit different from that to which the receiver is connected.
- Consult the dealer or an experienced radio/TV technician for help.