

Quick Start Guide

RE Series by ATEL



5G Indoor CPE

Model: RE600

ATEL
PASSION FOR INNOVATION

Version 1.0

About your RE600

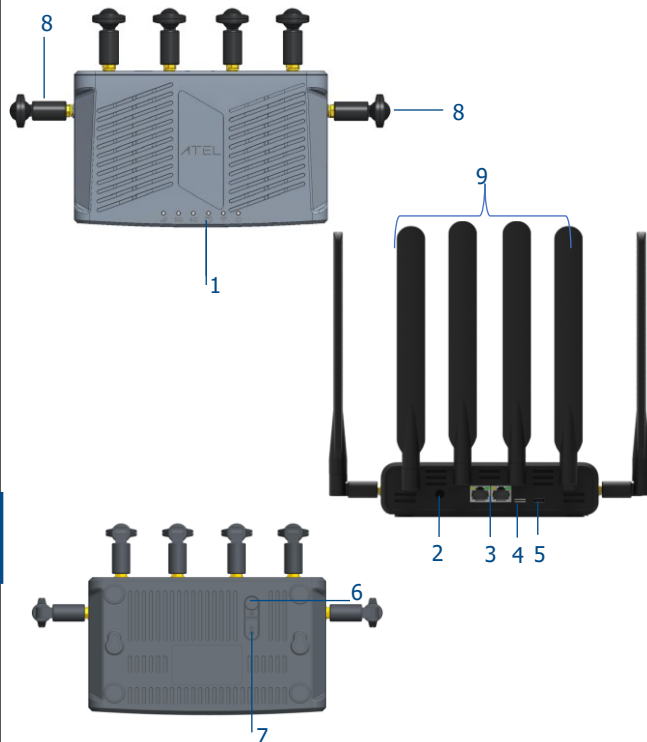


Figure 1. LEDs & Ports Location

PW550 Ports & LED Interface

1	LEDs Provides several information about your RE600. Refer to LED definition for more details.	6	WPS Press this button for 5 seconds to activate the WPS feature. This helps connect wireless devices without entering the WiFi Password.
2	DC Connects to the Power adapter for power supply.	7	Reset Key Press this button for your RE600 configurations to factory defaults
3	Ethernet RJ45 Ports Establish local connection over Ethernet.	8	2.4/5GHz WiFi1/WiFi2 SMA Female Antennas for 2.4&5GHz WiFi Radio.
4	SIM Slots (SIM1 & SIM2) Nano (4FF) SIM cards need to be inserted as directed	9	CELL (Cellular) SMA male Antennas for Cellular Radio.
5	USB Type C USB Port for Diagnosis & Engineering Purposes Only.		

Table 1. Ports & Interface Definition

LED Description

Signal	On	Green	Good signal, RSRP > = -95dBm
	On	Blue	Normal signal, -95dBm > RSRP >=-115dBm
	On	Red	Weak signal -115dBm > RSRP >=-125dBm
	Blinking	Red	Error, Due to No SIM card or Failed to detect SIM card.
	Off	---	No Signal
5G Network	On	Green	Device is in connected state with 5G Network
	Off	---	Device is in disconnected state with 5G Network
4G Network	On	Green	Device is in connected state with 4G Network
	Off	---	Device is in disconnected state with 4G Network
LAN	On	Green	Client is connected over LAN
	Off	---	No Client is connected over LAN
WiFi	On	Green	WiFi is Enabled
	Off	---	WiFi is Disabled
Power	On	Green	Indicates Device is powered on.
	Off	---	No input power to the RE600

Package Contents

- RE600 Indoor CPE
- Power Adaptor
- Quick Start Guide
- External Antennas
 - SMA Female antennas for WiFi x 2
 - SMA Male antennas for Cellular x 4

Note:

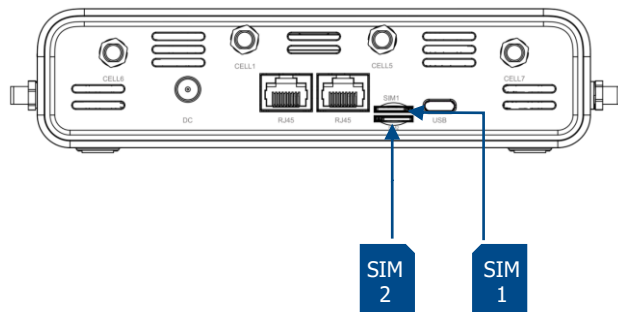
- Use only the provided accessories as mentioned above.
- If you find anything missing from Package contents as listed above, kindly contact your distributor.

Setting up your RE600 5G CPE

Install SIM Cards

1. Install the SIM cards as directed

NOTE: Use Nano SIM (4FF) Card Size

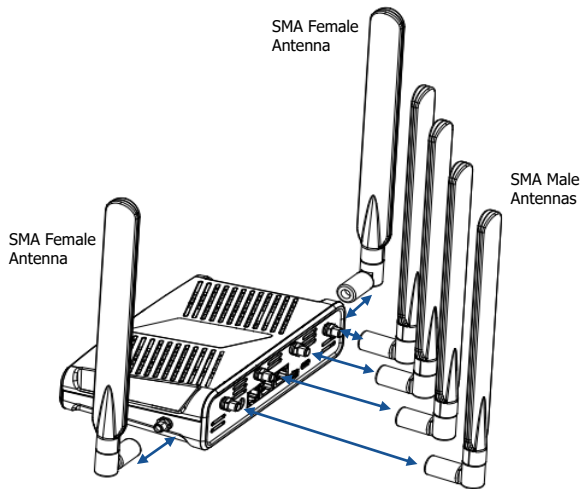


2. To remove a SIM, press the edge of the SIM inward and the SIM will pop outward from the SIM slot.

Connect WiFi & Cellular Antennas

3. Connect 2 SMA Female antennas to WiFi Antenna ports in clockwise direction.

4. Connect 4 SMA Male antennas to Cellular Antenna ports in clockwise direction.
Make sure to keep Antenna tighten enough.

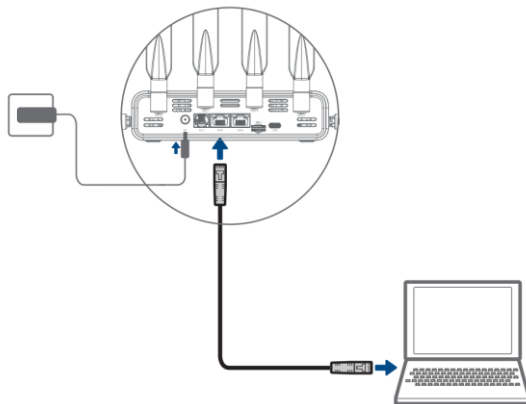


Connect with Wired or Wireless Clients

5. Use LAN port to connect your wired client using an Ethernet cable.
6. To connect over WiFi, scan the WiFi SSID name as mentioned on your RE600 label and input the password key for authentication on your wireless device.

Connect Power Adaptor

7. Connect your Power adaptor to wall outlets.
8. Connect Power Adaptor output with DC Port of your RE600. You will find Power LED is turned On.



WARNING! Please only use the provided Power adaptor. The use of other incompatible adapters may cause damage to RE600 and void the warranty.

Online Device Management Portal

You can access your RE600 5G CPE Online Portal to view your RE600 status, change your RE600 settings, and perform manual software upgrades.

1. While you are connected with RE600 5G CPE over WiFi or LAN. Use any web browser and enter <http://192.168.0.1> in the URL address bar.
2. The login username is "admin" and password can be found on the your RE600 label. Click on Sign In button to login.



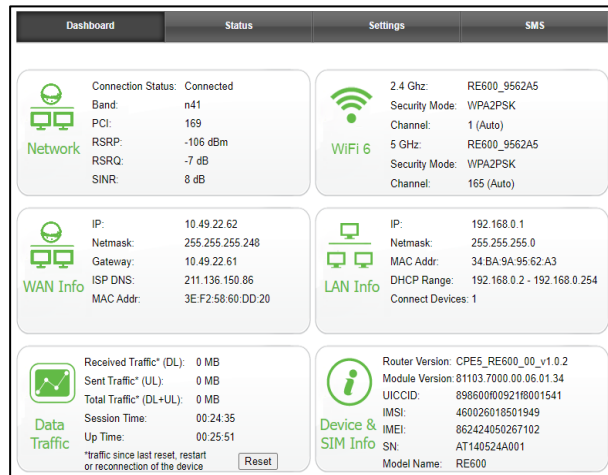
Login

Username:

Password:

Login Clear

3. From the Dashboard menu, you can view your several information and network status like Signal quality, Network name.
4. If Network status is showing Connected and you can see IP addresses in WAN Info. That indicates that CPE is connected with network and ready to use.



5. For WiFi related settings i.e. SSID Name and Password, go to SETTINGS > Wi-Fi Settings.

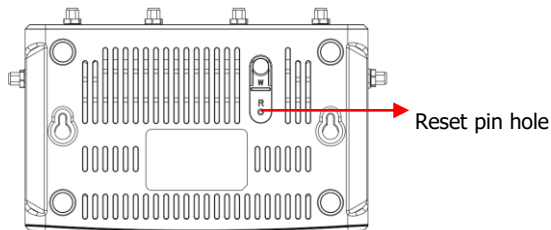
For more details, please refer to User Manual.

Factory Resetting of Your RE600 5G CPE

You can reset your RE600 5G CPE to factory default settings in two ways

● Using Reset Button

1. Make sure your RE600 5G CPE is powered on.
2. Insert a pin into the Reset pin hole, Push down and hold up to 5 seconds, then it will help restore your RE600 with the factory default settings.



● Using Online Portal (webGUI)

1. Make sure your RE600 5G CPE is powered on and you have access to webGUI.
2. Go to Settings > Basic: Management > Factory Reset, Click on **Restore** button.
The device will then restore to the factory defaults settings.

Note: Factory Reset or Restart process, make sure power adaptor is connected with RE600 to ensure uninterrupted power supply.

FAQ:

The Power LED indicator is not ON.

- Check if the Power adapter is plugged properly into AC socket.
- Check power adapter is connected to CPE properly.

Note: Use only provided Power Adaptor comes with packaging along with your RE600.

Web Based Utility (WebGUI) cannot be accessed

- Ensure that the CPE is powered on.
- Ensure that your wireless client is connected and acquired the IP address from CPE over Wired or wireless connection.
- Check with another web browser or try reset the browser cache memory
- Try Reboot or factory reset your RE600.

Device cannot access the network

- Ensure your USIM card is valid and active.
- Check 5G/4G LED, it should be On. In case, if it is off then login to webGUI and check the Network details available on home page.
- Network status should be showing Connected. If it is showing disconnected or connecting, Kindly check network parameters RSRP, SINR values.
SINR value (dB) should be Positive.
RSRP value must be greater than -115dBm. Preferred value should be around -90 dBm.
- Try Reboot or factory reset your RE600.

For any support & query, Kindly connect with us.

Our Website: www.asiatelco.com

Contact us at: sales@asiatelco.com.

© 2024 Asiatelco Technologies Co. All Rights Reserved

FCC Regulations

ATEL 4G/5G Wi-Fi Router complies with part 15 of the FCC Rules. Operation is subject to the following two conditions: (1) This device may not cause harmful interference, and (2) this device must accept any interference received, including interference that may cause undesired operation.

This equipment has been tested and found to comply with the limits for a Class B digital device, under Part 15 of the FCC Rules. These limits are designed to provide reasonable protection against harmful interference in a residential installation.

This equipment generates, uses, and can radiate radio frequency energy and, if not installed and used by the instructions, may cause harmful interference to radio communications.

However, there is no guarantee that interference will not occur in a particular installation. If this equipment does cause harmful interference to radio or television reception, which can be determined by turning the equipment off and on, the user is encouraged to try to correct the interference by one or more of the following measures:

- Reorient or relocate the receiving antenna.
- Increase the separation between the equipment and receiver.
- Connect the equipment into an outlet on a circuit different from that to which the receiver is connected.
- Consult the dealer or an experienced radio/TV technician for help.

FCC RF Radiation Exposure Statement

This equipment complies with FCC radiation exposure limits set forth for an uncontrolled environment. To comply with FCC RF exposure compliance requirements, this grant applies to only Mobile Configurations. The antennas used for the transmitter must be installed to provide a separation distance of at least 20cm from all persons and must not be co-located or operating in conjunction with any other antenna or transmitter.