



Air Keyboard Conqueror User Manual

Safety Information

- ✗ 1. Do not use this product near water or moisture.
- ✗ 2. This product is NOT weatherproof.
- ✗ 3. Clean only with a dry lint-free cloth. Disconnect the power source before cleaning. Do not use any chemicals or cleaners.
- ✗ 4. Do not install or use near any open flame or heat sources, such as radiators, heat registers, stoves, grills, or other devices that produce heat.
- ⚠ 5. Do not expose to direct sunlight.
- ⚠ 6. Only use accessories specified by the manufacturer.

Important Safety Instructions

1. Read and Keep this manual
2. Always consider the environmental issues and follow local regulations when disposing of batteries. If you will not use the product for a long period of time, please remove the battery.
3. Refer all servicing to qualified service personnel. Servicing is required when the unit has been damaged in any way, such as liquid had been spilled or objects have fallen into the product, the product has been exposed to rain or moisture, does not operate normally, or has been dropped.

Product & Accessory

1. Air Keyboard Conqueror*1
2. Dongle receiver*1
3. Mini USB Cable *1
4. CD Software for Definable Buttons*1
5. Lithium-ion rechargeable battery*1
6. User Manual*1

Feature

- Ergonomic design for ultra comfort and control
- Two analog joysticks with digital buttons
- 4 axis 10 fire buttons
- Trusty 8-way D-pad
- Plug-and-play convenience
- Power saving function
- User definable buttons
- Charging via mini USB port
- Motion sensing air mouse.
- Left and Right mouse buttons.

Specification

Frequency Range: 2403MHz ~ 2475MHz
 Built-in Lithium-ion rechargeable battery
 Operation time: > 20hrs for constant usage
 Charging time: 3 ~ 4 hours
 Supported OS: PC: Windows 98/ME/2000/XP/Vista/Windows 7
 Transmission range: up to 10 meters 2403MHz ~ 2475MHz
 Dimension : 149(L) x 126(W) x 47(H)mm
 *Self customizable buttons are only for Microsoft Windows system and may not work normally in Mac OS or Linux system.

Installation Guide

1. Battery & Charging

1. Before using the device for the first time, you must charge Air Keyboard via mini USB port for approximately 3 hours.
2. When fully charged, the battery provides approximately 20 hours of operation time (actual performance may vary according to user habit and battery condition).
3. When the battery is low, the green LED light will flash slowly. (Please refer to Section 5 below for LED indicator).
4. If you intend not to use the product for a long period of time, remove the battery.

Fig 1: The compartment of rechargeable battery

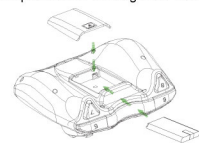
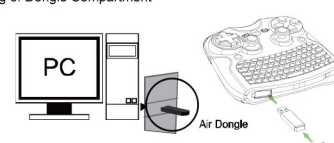


Fig 2: USB Power Connector



Fig 3: Dongle Compartment



2. Installation

- 1) Connect Air Dongle to the computer. (Make sure the blue LED on Air Dongle is blinking before turn on the Air Keyboard Power).
- 2) To avoid interference, if you are using more than one wireless dongle at a time, the distance between each dongle should be more than 50cm.
- 3) Press the power button once to turn on the power of Air Keyboard. After idling for 1 minutes, Air Keyboard will switch off to save power, press the power button to turn it on again.
- 4) After connecting the Air Dongle to the USB port of the computer, the system will automatically search for Air Keyboard and establish connection.

3. User definable buttons (Applies to Windows OS)

Get quick access to the media, programs, and files you use most often with definable buttons.

- 1) Please insert the Driver CD and follow steps on screen to install.
- 2) Please select the device name which you bought from the pull down menu.

Block 1

Buttons: Select the button you want to define one at a time.

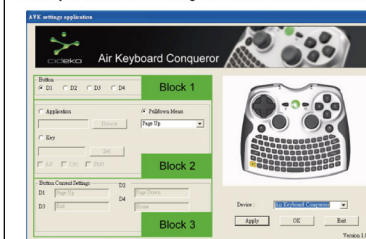
Block2:

The access buttons could be customized with one of the 3 different methods.

- 1) Application: Click the Browse button, find the file or software you want to access with definable button.
- 2) Pull down menu: Select the program or command from the pull down menu.
- 3) Key: Specify the combinations of keys to be executed with a definable button.

Block 3:

Show you the current settings of each definable buttons.



Note:

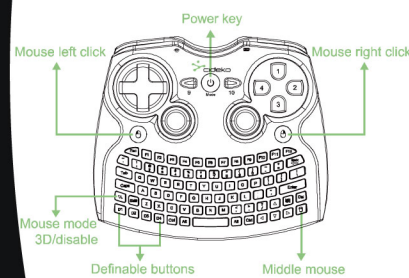
Press Apply to confirm the setting.
 Press OK to finish the setting.
 Press Exit to quit the function of quick access.

4. Function of Keyboard Buttons

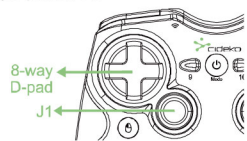
- 1) Please use the button to select the mouse mode. The mode switches in a cycle (enable 3D mouse/disable mouse function).

Under 3D mode:
 Move Air Keyboard to control the gyro mouse and use the mouse left click and mouse right click buttons for left/right click.

	Windows
	Middle mouse
	Definable Button
	Definable Button
	Definable Button
	Definable Button
	Mode Switch: 1. Enable 3D mouse function 2. Disable
	Power Key

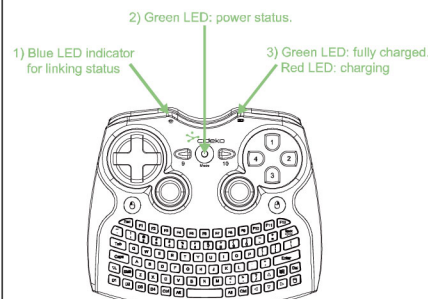


- 2) Press the power key for 1.5 sec. to switch the function of 8-way D-pad and J1.



5. LED Indicators

- 1) Connecting: Blue LED flashes once for each command.
- 2) Power Key
 Sufficient power: Green LED on.
 Low battery: Green LED flashes slowly.
- 3) Charging indicator
 Charging completed: Green LED light stays on.
 Charging: Red LED on.



Troubleshooting:

If Air Keyboard does not work properly, please follow these troubleshooting methods.

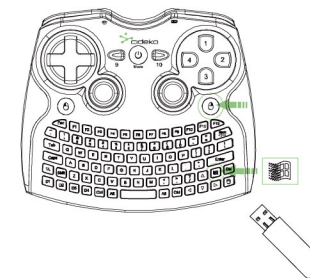
- 1) Make sure the battery is properly installed and the battery contain enough power. When the remaining power is insufficient, the power status indicator will be blinking; the battery needs to be charged otherwise the Air Keyboard will power off automatically.
- 2) If Air Keyboard does not work properly even with sufficient power, make sure Air Keyboard is turned on and try these steps:
 - a) Remove Air Dongle. Then, reconnect Air Dongle and try again.
 - b) Try a different port or environment:
 Try to connect the Air Dongle to a different USB port. Then, check the operation of Air Keyboard. By trying Air Dongle in a different port, you can eliminate any issues caused by the port.
 - c) Test the device on a different computer

If the issue continues to occur, test the keyboard on a different computer in a different environment.

- 3) The pairing between Air Dongle and Air Keyboard was completed before shipment

If the above steps do not solve your issue, it might be that the pairing was lost, perform the following pairing steps again:

- 1) Connect Air Dongle to the computer.
- 2) Bring Air Keyboard next to Air Dongle within 30cm.
 Press the "Windows" and "mouse right click" buttons at the same time for 5 seconds. Air Keyboard will search for Air Dongle and the Air Dongle LED indicator will be blinking. When the pairing is completed, Dongle LED will no longer blink and you can start using Air Keyboard.
 If Air Keyboard does not work correctly after the above steps are performed 3 times, please consult your dealer.



Warranty Information:

Air Keyboard comes with 2 year limited warranty. Please contact your dealer for details in case of warranty claims. The warranty will void in the case that the defect has been caused by misuse, neglect, improper installation, repair, alteration or accident. Cideko bears no responsibility for failure or defect caused by any third party product or components whether authorized or not.



FCC statement in User's Manual (for class B)

"Federal Communications Commission (FCC) Statement

This Equipment has been tested and found to comply with the limits for a class B digital device, pursuant to Part 15 of the FCC rules. These limits are designed to provide reasonable protection against harmful interference in a residential installation. This equipment generates, uses and can radiate radio frequency energy and, if not installed and used in accordance with the instructions, may cause harmful interference to radio communications. However, there is no guarantee that interference will not occur in a particular installation. If this equipment does cause harmful interference to radio or television reception, which can be determined by turning the equipment off and on, the user is encouraged to try to correct the interference by one or more of the following measures:

- Reorient or relocate the receiving antenna.
- Increase the separation between the equipment and receiver.
- Connect the equipment into an outlet on a circuit different from that to which the receiver is connected.
- Consult the dealer or an experienced radio/TV technician for help.

FCC Caution:

1. The device complies with Part 15 of the FCC rules. Operation is subject to the following two conditions:
 - (1) This device may not cause harmful interference, and
 - (2) this device must accept any interference received, including interference that may cause undesired operation.

2. This device and its antenna(s) must not be co-located or operating in conjunction with any other antenna or transmitter.

3. Changes or modifications to this unit not expressly approved by the party responsible for compliance could void the user authority to operate the equipment.