

Launch Tech Co., Ltd.

March 26, 2025

Federal Communications Commission
Equipment Authorization Division
7435 Oakland Mills Road
Columbia, MD 21046
USA

Attn: OET Dept.

Ref: FCC Class II Permissive change for FCC ID: XUJCRP349PLUS

Applicant: Launch Tech Co., Ltd.

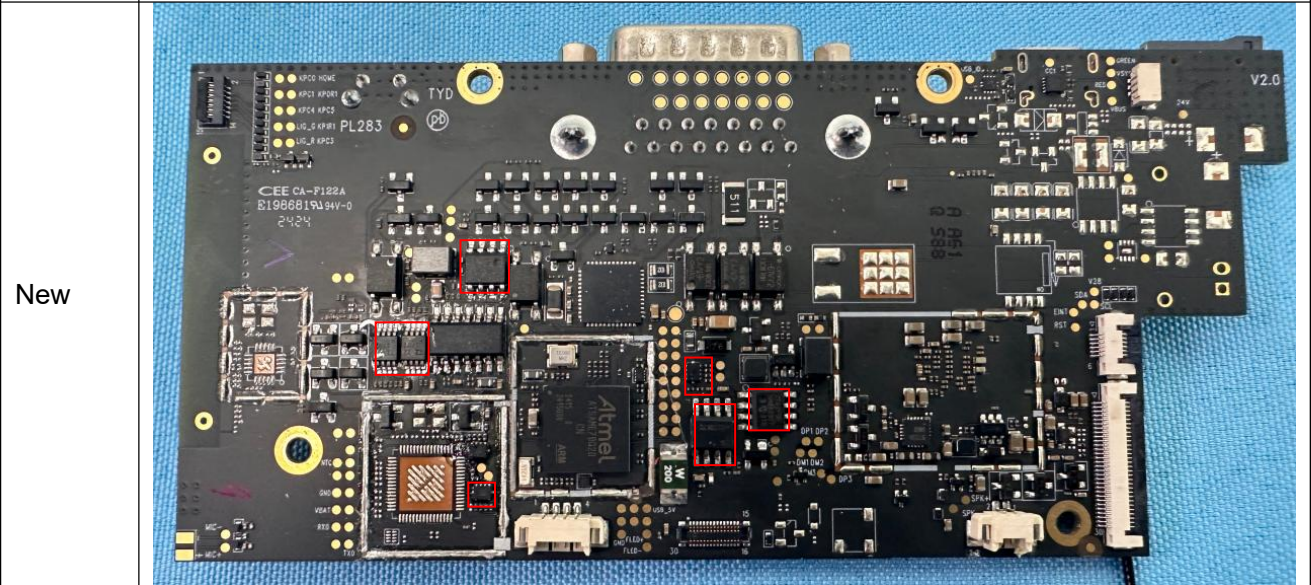
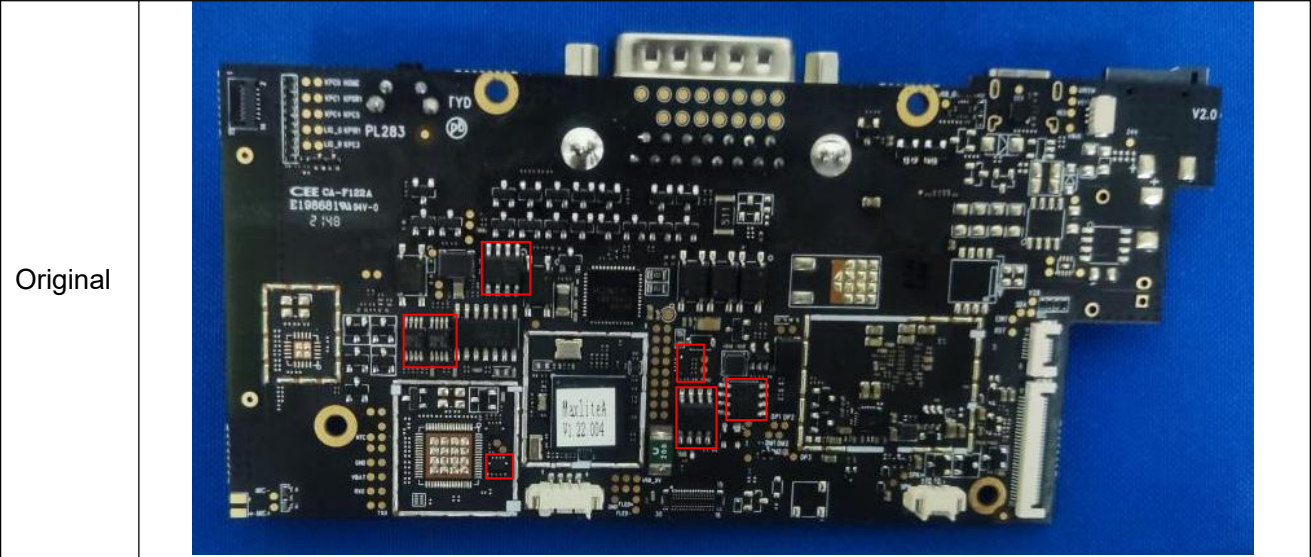
Dear Examiner,

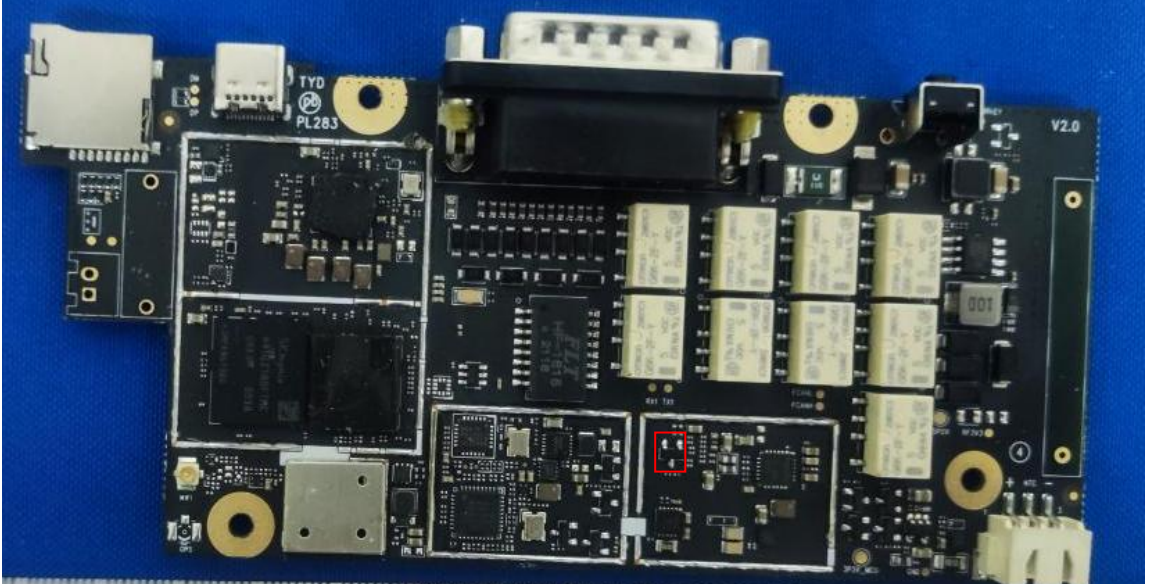
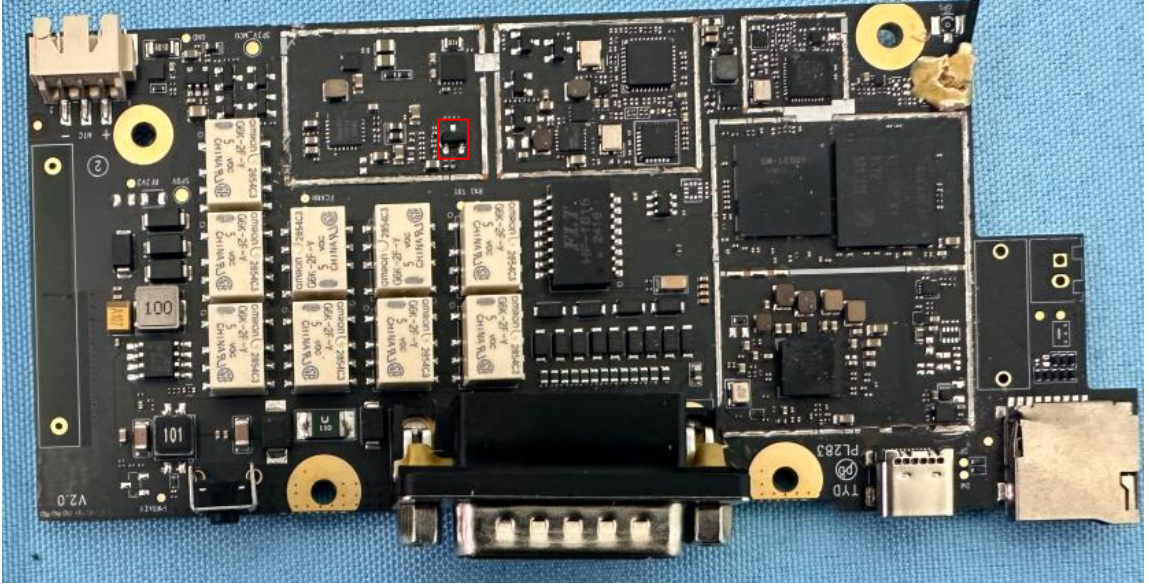
This is to request a Class II Permissive change for FCC ID: XUJCRP349PLUS originally granted on 2022/05/26.



The change under this application is to:

1. The motherboard and PCB layout remain unchanged, but the electronic materials are replaced with substitute materials. The packaging and specifications of the substitute materials are the same as the original main materials.
2. Add the Model No.: 59582.
3. Change the battery capacity to "6000mAh".
4. Delete factory information from the report.
5. Update the EUT Photograph.
6. Change the company address of Applicant and Manufacturer in the report.

1. Electronic materials. As shown in the figure, the only difference is the material.



Original	 A photograph of a printed circuit board (PCB) assembly, labeled 'Original'. The board is populated with various electronic components, including a central microcontroller, several memory modules, and various passive components. A red box highlights a specific component on the board. The board is marked with 'TYD PL283' and 'V2.0'.
New	 A photograph of a printed circuit board (PCB) assembly, labeled 'New'. This board is populated with a different set of components, including a central microcontroller, several memory modules, and various passive components. A red box highlights a specific component on the board. The board is marked with 'TYD PL283' and 'V2.0'.

2.	Battery capacity
Original	 <p>The image shows an original blue cylindrical battery with a black label. The label contains the following text: <ul style="list-style-type: none"> - EPT 18650 6100mAh + 3.7V 22.57Wh 200910 The battery is connected to a white ribbon cable and is housed in a red plastic enclosure. A white connector is visible on the left side. </p>
New	 <p>The image shows a new blue cylindrical battery with a black label. The label contains the following text: <ul style="list-style-type: none"> - EPT 18650 1S2P 6000mAh +3.7V 22.2Wh 231114 The battery is connected to a black PCB with various components. A white ribbon cable is also visible. The battery is housed in a red plastic enclosure. A warning label on the top of the battery reads: <ul style="list-style-type: none"> explosion risk To avoid injury consumers MUST NEVER care </p>

I attest that the certified device will not be capable of ad-hoc mode operation outside of the grant conditions.

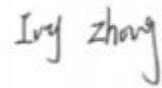
Sincerely,

Name: Ivy Zhong

Date: 3/26/2025

Title: Manager

Signature of applicant

A handwritten signature in black ink that reads "Ivy Zhong". The signature is written in a cursive style with a loop at the end of the "g".