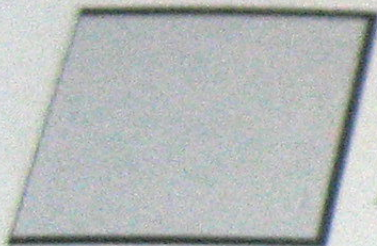




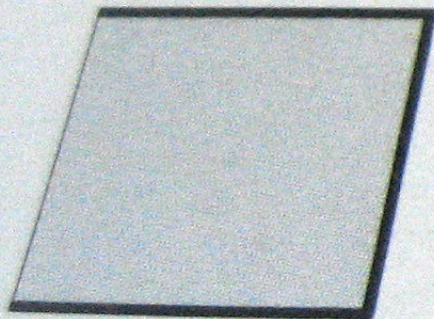
4



3



2



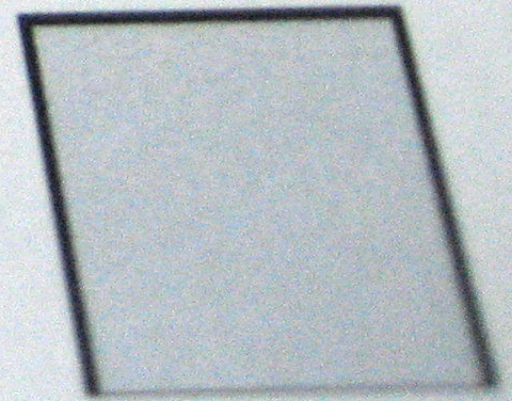
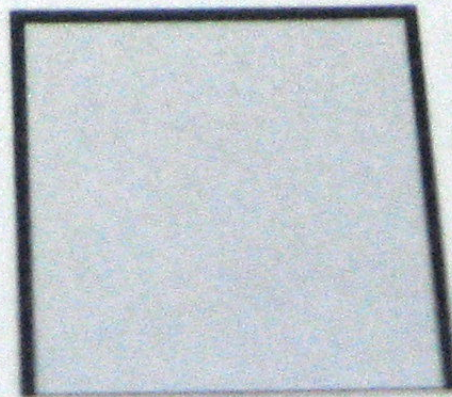
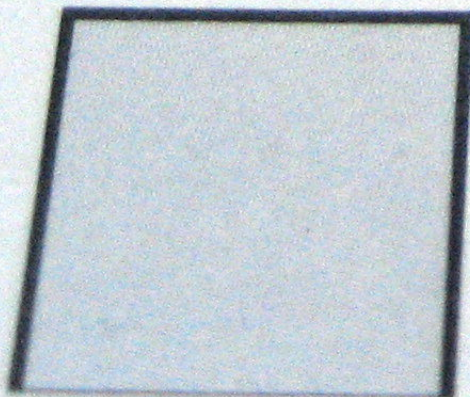
1



1

2

3



RFD21712 LMA
FCC ID: X06-DJ2MOD1
IC: 8558A-DJ2MOD1

RFD21712 LMA
FCC ID: X06-DJ2MOD1
IC: 8558A-DJ2MOD1

RFD21712 LMA
FCC ID: X06-DJ2MOD1
IC: 8558A-DJ2MOD1

RFD21712 LMA
FCC ID: X06-DJ2MOD1
IC: 8558A-DJ2MOD1

RFD21712 LMA
FCC ID: X06-DJ2MOD1
IC: 8558A-DJ2MOD1

RFD21712 LMA
FCC ID: X06-DJ2MOD1
IC: 8558A-DJ2MOD1

RFD21712 LMA
FCC ID: X06-DJ2MOD1
IC: 8558A-DJ2MOD1

RFD21712 LMA
FCC ID: X06-DJ2MOD1
IC: 8558A-DJ2MOD1

RFD21712 LMA
FCC ID: X06-DJ2MOD1
IC: 8558A-DJ2MOD1

RFD21712 LMA
FCC ID: X06-DJ2MOD1
IC: 8558A-DJ2MOD1

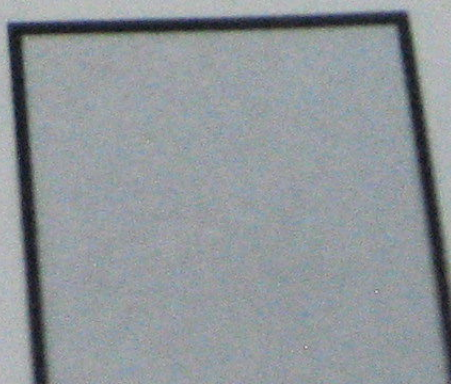
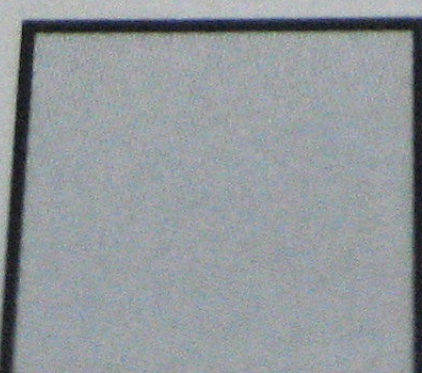
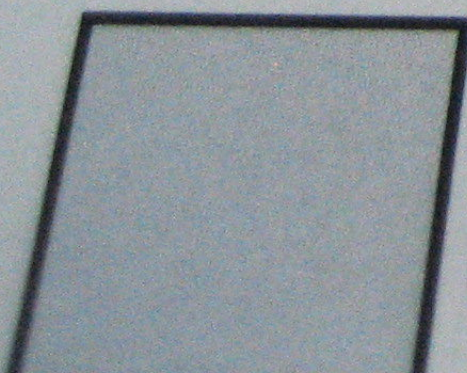


3

4

5

6



Wireless LED Fixture Controller



Giulio Lighting
Model LC-001
Assy 35-00008-00

24 VDC 1.5 A
max
- - +

Power

RF Activity

RF Error

Contains FCC ID: X06-DJ2MOD1
IC: 8558A-DJ2MOD1
This device complies with part 15 of the FCC Rules.
Operation is subject to the following two conditions: (1)
This device may not cause harmful interference, and (2) this
device must accept any interference received, including
interference that may cause undesired operation.

Low Voltage
Lighting System



DRY LOCATIONS ONLY.
CONNECT ONLY TO CLASS 2
OR LPS CIRCUITS.
Connect only to LEDdrive devices.

↑
ORIENT TO
WALL

LEDdrive

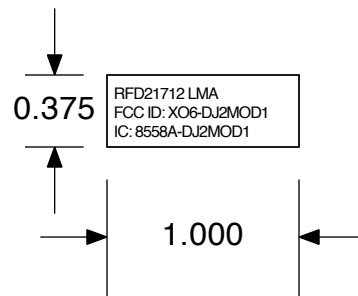
Fixture Configuration

- White-only
- RGBW
- RGBA
- RGB

Prog

24-00002-01

Patents Pending. Designed/Manufactured in USA



Label P/N: 24-00015-00
 Label Material: 2 mil matte white polyester
 Adhesive backing (Ziptape LSR-10-600 or equiv)
 Ink(s): Black 6C or equivalent

danjuliodesigns, LLC	
TITLE: nRF24L01+ Module FCC Label	
File: 20-00050-00.ezdraw	
Document #: 20-00050	Rev: 00
Date: Apr. 05, 2010	Page: 1 of 1