

EG060K Series(EA,LA,NA)

Hardware Design

LTE-A Module Series

Version: 1.0.0

Date: 2024-01-26

Status: Preliminary



At Quectel, our aim is to provide timely and comprehensive services to our customers. If you require any assistance, please contact our headquarters:

Quectel Wireless Solutions Co., Ltd.

Building 5, Shanghai Business Park Phase III (Area B), No.1016 Tianlin Road, Minhang District, Shanghai 200233, China

Tel: +86 21 5108 6236

Email: info@quectel.com

Or our local offices. For more information, please visit:

<http://www.quectel.com/support/sales.htm>.

For technical support, or to report documentation errors, please visit:

<http://www.quectel.com/support/technical.htm>.

Or email us at: support@quectel.com.

Legal Notices

We offer information as a service to you. The provided information is based on your requirements and we make every effort to ensure its quality. You agree that you are responsible for using independent analysis and evaluation in designing intended products, and we provide schematic designs for illustrative purposes only. Before using any hardware, software or service guided by this document, please read this notice carefully. Even though we employ commercially reasonable efforts to provide the best possible experience, you hereby acknowledge and agree that this document and related services hereunder are provided to you on an “as available” basis. We may revise or restate this document from time to time at our sole discretion without any prior notice to you.

Use and Disclosure Restrictions

License Agreements

Documents and information provided by us shall be kept confidential, unless specific permission is granted. They shall not be accessed or used for any purpose except as expressly provided herein.

Copyright

Our and third-party products hereunder may contain copyrighted material. Such copyrighted material shall not be copied, reproduced, distributed, merged, published, translated, or modified without prior written consent. We and the third party have exclusive rights over copyrighted material. No license shall be granted or conveyed under any patents, copyrights, trademarks, or service mark rights. To avoid ambiguities, purchasing in any form cannot be deemed as granting a license other than the normal non-exclusive, royalty-free license to use the material. We reserve the right to take legal action for noncompliance with abovementioned requirements, unauthorized use, or other illegal or malicious use of the material.

Trademarks

Except as otherwise set forth herein, nothing in this document shall be construed as conferring any rights to use any trademark, trade name or name, abbreviation, or counterfeit product thereof owned by Quectel or any third party in advertising, publicity, or other aspects.

Third-Party Rights

This document may refer to hardware, software and/or documentation owned by one or more third parties ("third-party materials"). Use of such third-party materials shall be governed by all restrictions and obligations applicable thereto.

We make no warranty or representation, either express or implied, regarding the third-party materials, including but not limited to any implied or statutory, warranties of merchantability or fitness for a particular purpose, quiet enjoyment, system integration, information accuracy, and non-infringement of any third-party intellectual property rights with regard to the licensed technology or use thereof. Nothing herein constitutes a representation or warranty by us to either develop, enhance, modify, distribute, market, sell, offer for sale, or otherwise maintain production of any our products or any other hardware, software, device, tool, information, or product. We moreover disclaim any and all warranties arising from the course of dealing or usage of trade.

Privacy Policy

To implement module functionality, certain device data are uploaded to Quectel's or third-party's servers, including carriers, chipset suppliers or customer-designated servers. Quectel, strictly abiding by the relevant laws and regulations, shall retain, use, disclose or otherwise process relevant data for the purpose of performing the service only or as permitted by applicable laws. Before data interaction with third parties, please be informed of their privacy and data security policy.

Disclaimer

- a) We acknowledge no liability for any injury or damage arising from the reliance upon the information.
- b) We shall bear no liability resulting from any inaccuracies or omissions, or from the use of the information contained herein.
- c) While we have made every effort to ensure that the functions and features under development are free from errors, it is possible that they could contain errors, inaccuracies, and omissions. Unless otherwise provided by valid agreement, we make no warranties of any kind, either implied or express, and exclude all liability for any loss or damage suffered in connection with the use of features and functions under development, to the maximum extent permitted by law, regardless of whether such loss or damage may have been foreseeable.
- d) We are not responsible for the accessibility, safety, accuracy, availability, legality, or completeness of information, advertising, commercial offers, products, services, and materials on third-party websites and third-party resources.

Copyright © Quectel Wireless Solutions Co., Ltd. 2024. All rights reserved.

Safety Information

The following safety precautions must be observed during all phases of operation, such as usage, service or repair of any terminal or mobile incorporating the module. Manufacturers of the terminal should notify users and operating personnel of the following safety information by incorporating these guidelines into all manuals of the product. Otherwise, Quectel assumes no liability for your failure to comply with these precautions.



Full attention must be paid to driving at all times in order to reduce the risk of an accident. Using a mobile while driving (even with a handsfree kit) causes distraction and can lead to an accident. Please comply with laws and regulations restricting the use of wireless devices while driving.



Switch off the terminal or mobile before boarding an aircraft. The operation of wireless appliances in an aircraft is forbidden to prevent interference with communication systems. If there is an Airplane Mode, it should be enabled prior to boarding an aircraft. Please consult the airline staff for more restrictions on the use of wireless devices on an aircraft.



Wireless devices may cause interference on sensitive medical equipment, so please be aware of the restrictions on the use of wireless devices when in hospitals, clinics or other healthcare facilities.



Terminals or mobiles operating over radio signal and cellular network cannot be guaranteed to connect in certain conditions, such as when the mobile bill is unpaid or the (U)SIM card is invalid. When emergency help is needed in such conditions, use emergency call if the device supports it. In order to make or receive a call, the terminal or mobile must be switched on in a service area with adequate cellular signal strength. In an emergency, the device with emergency call function cannot be used as the only contact method considering network connection cannot be guaranteed under all circumstances.



The terminal or mobile contains a transceiver. When it is ON, it receives and transmits radio frequency signals. RF interference can occur if it is used close to TV sets, radios, computers or other electric equipment.



In locations with explosive or potentially explosive atmospheres, obey all posted signs and turn off wireless devices such as mobile phone or other terminals. Areas with explosive or potentially explosive atmospheres include fuelling areas, below decks on boats, fuel or chemical transfer or storage facilities, and areas where the air contains chemicals or particles such as grain, dust or metal powders.

About the Document

Revision History

Version	Date	Author	Description
-	2024-01-26	Iyukee SHEN/ Nancy SHAO/ Jacen HUANG	Creation of the document
1.0.0	2024-01-26	Iyukee SHEN/ Nancy SHAO/ Jacen HUANG	Preliminary

Contents

Safety Information.....	3
About the Document.....	4
Contents	5
Table Index.....	8
Figure Index	10
1 Introduction	12
1.1. Special Marks	12
2 Product Overview	14
2.1. Frequency Bands and Functions.....	14
2.2. Key Features	14
2.3. Functional Diagram	17
2.4. Pin Assignment.....	18
2.5. Pin Definitions.....	19
2.6. EVB Kit.....	27
3 Operating Characteristics	28
3.1. Operating Modes	28
3.1.1. Sleep Mode	29
3.1.1.1. UART Application.....	29
3.1.1.2. USB Application	30
3.1.2. Airplane Mode	32
3.2. Power Supply.....	33
3.2.1. Power Supply Pins	33
3.2.2. Reference Design for Power Supply.....	34
3.2.3. Power Supply Voltage Monitoring.....	35
3.3. Turn On.....	35
3.4. Turn Off.....	38
3.4.1. Turn Off with PWRKEY	38
3.4.2. Turn Off with AT Command	38
3.5. Reset.....	39
4 Application Interfaces	40
4.1. (U)SIM Interfaces.....	41
4.2. USB Interface	43
4.3. UART Interfaces	45
4.3.1. Main UART Interface.....	46
4.3.2. Debug UART Interface.....	46
4.3.3. Bluetooth UART Interface*	46
4.3.4. UART Application	47
4.4. SPI	49
4.5. PCM and I2C Interfaces	50

4.6.	ADC Interfaces	52
4.7.	Status Indication	53
4.7.1.	Network Status Indication	53
4.7.2.	Module Status Indication.....	54
4.8.	RI	55
4.9.	PCIe Interface.....	56
4.10.	SDIO Interface	58
4.11.	Antenna Tuner Control Interfaces*	60
4.12.	USB_BOOT Interface	60
5	RF Specifications.....	61
5.1.	Cellular Network	61
5.1.1.	Antenna Interface & Frequency Bands.....	61
5.1.2.	Tx Power	63
5.1.3.	Rx Sensitivity.....	63
5.1.4.	Reference Design	66
5.2.	GNSS.....	67
5.2.1.	Antenna Interface & Frequency Bands.....	67
5.2.2.	GNSS Performance	68
5.2.3.	Passive Antenna Reference Design	69
5.2.4.	Active Antenna Reference Design.....	70
5.3.	RF Routing Guidelines	71
5.4.	Antenna Design Requirements	73
5.5.	RF Connector Recommendation.....	74
6	Electrical Characteristics and Reliability	76
6.1.	Absolute Maximum Ratings.....	76
6.2.	Power Supply Ratings	77
6.3.	Power Consumption	77
6.4.	Digital I/O Characteristics.....	82
6.5.	ESD Protection	83
6.6.	Operation and Storage Temperatures	84
6.7.	Thermal Dissipation.....	84
7	Mechanical Information.....	86
7.1.	Mechanical Dimensions.....	86
7.2.	Recommended Footprint.....	88
7.3.	Top and Bottom Views	89
8	Storage, Manufacturing & Packaging.....	90
8.1.	Storage Conditions	90
8.2.	Manufacturing and Soldering	91
8.3.	Packaging Specification	93
8.3.1.	Carrier Tape	93
8.3.2.	Plastic Reel	94
8.3.3.	Mounting Direction	94

8.3.4.	Packaging Process	95
9	Appendix References	96

Table Index

Table 1: Special Marks.....	12
Table 2: Frequency Bands and GNSS Types.....	14
Table 3: Key Features.....	15
Table 4: Parameter Definition	20
Table 5: Pin Description	20
Table 6: Overview of Operating Modes	28
Table 7: Pin Description of W_DISABLE#	32
Table 8: RF Function Status	32
Table 9: VBAT and GND Pins.....	33
Table 10: PWRKEY Pin Description	35
Table 11: RESET_N Pin Description	39
Table 12: Pin Description of (U)SIM Interfaces	41
Table 13: Pin Description of USB Interface	43
Table 14: USB Trace Length Inside the Module.....	45
Table 15: Pin Description of Main UART Interface	46
Table 16: Pin Definition of Debug UART Interface	46
Table 17: Pin Description of Bluetooth UART Interface	47
Table 18: Pin Description of SPI	49
Table 19: Pin Description of PCM and I2C Interfaces	51
Table 20: Pin Description of the ADC Interface	52
Table 21: Characteristics of ADC Interfaces.....	53
Table 22: Pin Description of NET_MODE and NET_STATUS.....	53
Table 23: Working Status of NET_MODE and NET_STATUS.....	53
Table 24: Pin Description of STATUS.....	54
Table 25: Default Behaviors of MAIN_RI.....	55
Table 26: Pin Description of PCIe Interface.....	56
Table 27: PCIe Trace Length Inside the Module	57
Table 28: Pin Description of SDIO Interface.....	58
Table 29: Pin Description of RFFE Interfaces	60
Table 30: Pin Description of USB_BOOT Interface	60
Table 31: Pin Description of the Main/Rx-diversity Antenna Interfaces	61
Table 32: Frequency Bands	61
Table 33: Tx Power	63
Table 34: EG060K-EA Dual-Antenna Conducted RF Rx Sensitivity	63
Table 35: EG060K-NA Dual-Antenna Conducted RF Rx Sensitivity	64
Table 36: EG060K-LA Dual-Antenna Conducted RF Rx Sensitivity	65
Table 37: Pin Description of GNSS Antenna Interface.....	67
Table 38: GNSS Frequency	67
Table 39: GNSS Performance	68
Table 40: Antenna Design Requirements	73
Table 41: Absolute Maximum Ratings	76

Table 42: Power Supply Ratings.....	77
Table 43: EG060K-EA Power Consumption.....	77
Table 44: EG060K-NA Power Consumption.....	79
Table 45: EG060K-LA Power Consumption	80
Table 46: 1.8 V I/O Requirements	82
Table 47: USIM_VDD High/Low-voltage I/O Requirements.....	82
Table 48: SDIO_VDD 1.8 V I/O Requirements.....	82
Table 49: SDIO_VDD 3.0 V I/O Requirements.....	83
Table 50: Electrostatic Discharge Characteristics (Temperature: 25–30 °C, Humidity: 40 ±5 %).....	83
Table 51: Operating and Storage Temperatures.....	84
Table 52: Recommended Thermal Profile Parameters	92
Table 53: Carrier Tape Dimension Table (Unit: mm).....	93
Table 54: Plastic Reel Dimension Table (Unit: mm).....	94
Table 55: Related Documents.....	96
Table 56: Term and Abbreviation.....	96

Figure Index

Figure 1: Functional Diagram.....	18
Figure 2: Pin Assignment (Top View)	19
Figure 3: DRX Run Time and Power Consumption in Sleep Mode.....	29
Figure 4: Sleep Mode Application via UART Interfaces	30
Figure 5: Sleep Mode Application with USB Remote Wake-up.....	30
Figure 6: Sleep Mode Application with Suspend function	31
Figure 7: Sleep Mode Application without Suspend Function	31
Figure 8: Power Supply Limits during Burst Transmission	33
Figure 9: Star Structure of the Power Supply	34
Figure 10: Reference Circuit of Power Supply.....	35
Figure 11: Turn On the Module with a Driving Circuit.....	36
Figure 12: Turn On the Module With a Button	36
Figure 13: Power-up Timing.....	37
Figure 14: Power-down Timing	38
Figure 15: Reference Circuit of RESET_N with a Driving Circuit	39
Figure 16: Reset Timing.....	39
Figure 17: Reference Circuit of (U)SIM Interfaces with an 8-Pin (U)SIM Card Connector	42
Figure 18: Reference Circuit of (U)SIM Interfaces with a 6-Pin (U)SIM Card Connector	42
Figure 19: Reference Circuit of USB Application.....	44
Figure 20: Reference Circuit with Translator Chip (Main UART)	47
Figure 21: Reference Circuit with Transistor Circuit (Main UART).....	48
Figure 22: Reference Circuit of PCM and SPI Application with SLIC.....	49
Figure 23: Primary Mode Timing.....	50
Figure 24: Auxiliary Mode Timing	51
Figure 25: Reference Circuit of PCM and I2C Application with Audio Codec.....	52
Figure 26: Reference Circuit of the Network Indicator.....	54
Figure 27: Reference Circuits of STATUS.....	54
Figure 28: PCIe Interface Reference Circuit (RC Mode)	57
Figure 29: Reference Circuit of SD Card Application	59
Figure 30: Reference Circuit of USB_BOOT	60
Figure 31: Reference Circuit of RF Antenna Interfaces.....	66
Figure 32: Reference Circuit of GNSS Passive Antenna Interface	69
Figure 33: Reference Circuit of GNSS Active Antenna Interface	70
Figure 34: Microstrip Line Design on a 2-layer PCB	71
Figure 35: Coplanar Waveguide Line Design on a 2-layer PCB	71
Figure 36: Coplanar Waveguide Line Design on a 4-layer PCB (Layer 3 as Reference Ground).....	71
Figure 37: Coplanar Waveguide Line Design on a 4-layer PCB (Layer 4 as Reference Ground).....	72
Figure 38: Dimensions of the Receptacle (Unit: mm).....	74
Figure 39: Specifications of Mated Plugs	74
Figure 40: Space Factor of Mated Connectors (Unit: mm).....	75
Figure 41: Placement and Fixing of the Heatsink.....	85

Figure 42: Module Top and Side Dimensions.....	86
Figure 43: Module Bottom Dimensions (Bottom View).....	87
Figure 44: Recommended Footprint	88
Figure 45: Top and Bottom Views of EG060K-EA.....	89
Figure 46: Top and Bottom Views of EG060K-NA.....	89
Figure 47: Top and Bottom Views of EG060K-LA	89
Figure 48: Reflow Soldering Thermal Profile	91
Figure 49: Carrier Tape Dimension Drawing	93
Figure 50: Plastic Reel Dimension Drawing	94
Figure 51: Mounting Direction.....	94
Figure 52: Packaging Process	95

1 Introduction

This document defines EG060K series modules and describes their air and hardware interfaces which are connected to your applications.

With this document, you can quickly understand module interfaces, electrical and mechanical specifications, as well as other related information of the modules. The document, coupled with application notes and user guides, makes it easy to design and sets up mobile applications with the modules.

1.1. Special Marks

Table 1: Special Marks

Mark	Definition
*	Unless otherwise specified, an asterisk (*) after a function, feature, interface, pin name, command, argument, and so on indicates that it is under development and currently not supported; and the asterisk (*) after a model indicates that the model sample is currently unavailable.
[...]	Brackets ([...]) used after a pin enclosing a range of numbers indicate all pins of the same type. For example, SDIO_DATA [0:3] refers to all four SDIO pins: SDIO_DATA0, SDIO_DATA1, SDIO_DATA2, and SDIO_DATA3.

With this document, you can quickly understand module interface specifications, electrical and mechanical details, as well as other related information of the module. The document, coupled with application notes and user guides, makes it easy to design and set up mobile applications with the module.

Hereby, Quectel Wireless Solutions Co., Ltd. declares that the radio equipment type EG060K are in compliance with Directive 2014/53/EU.

The full text of the EU declaration of conformity is available at the following internet address:
<http://www.quectel.com/support/technical.htm>

Disposal of old electrical appliances

The European directive 2012/19/EU on Waste Electrical and Electronic Equipment (WEEE), requires that old household electrical appliances must not be disposed of in the normal unsorted municipal waste stream. Old appliances must be collected separately in order to optimize the recovery and recycling of the materials they contain, and reduce the impact on human health and the environment.

The crossed out "wheeled bin" symbol on the product reminds you of your obligation, that when you dispose of the appliance, it must be separately collected.

Consumers should contact their local authority or retailer for information concerning the correct disposal of their old appliance.

The device could be used with a separation distance of 20cm to the human body.

This product can be used across EU member states.

2 Product Overview

The module is an LTE/WCDMA wireless communication module with receiving diversity. It provides data connectivity on LTE-FDD, LTE-TDD, DC-HSDPA, HSPA+, HSDPA, HSUPA and WCDMA networks.

The module supports embedded operating systems such as Windows, Linux and Android. It also provides GNSS to meet specific application demands.

2.1. Frequency Bands and Functions

The following table shows the frequency bands and GNSS systems supported by the module.

Table 2: Frequency Bands and GNSS Types

Mode	EG060K-EA	EG060K-NA	EG060K-LA
LTE-FDD (with Rx-diversity)	B1/B3/B5/B7/ B8/B20/B28/ B32 ²	B2/B4/B5/B7/ B12/B13/B14/ B25/B26/B29 ² / B30/B66/B71	B2/B4/B5/B7/B8/B25/B28/ B66
LTE-TDD (with Rx-diversity)	B38/B40/B41	B41/B48	B42/B43
WCDMA (with Rx-diversity)	B1/B3/B5/B8	-	B2/B4/B5/B8
GNSS	GPS, GLONASS, BDS, Galileo	GPS, GLONASS, BDS, Galileo	GPS, GLONASS, BDS, Galileo

With a compact profile of 37.0 mm × 39.5 mm × 2.8 mm, the module is an SMD type module and can be embedded in applications through its 299 LGA pins.

2.2. Key Features

² LTE-FDD B32 and B29 support Rx only and are only for secondary component carrier.

Table 3: Key Features

Feature	Details
Power Supply	<ul style="list-style-type: none"> ● Supply voltage range: 3.3–4.4 V ● Typical supply voltage: 3.8 V
Transmitting Power	<ul style="list-style-type: none"> ● Class 3 (23 dBm \pm2 dB) for LTE bands ● Class 3 (23 dBm \pm2 dB) for WCDMA bands
LTE Features	<ul style="list-style-type: none"> ● EG060K-EA ● Supports 3GPP Rel-12 Cat 6 LTE-FDD and LTE-TDD ● Supports UL QPSK and 16QAM modulations ● Supports DL QPSK, 16QAM and 64QAM modulations ● Supports 1.4/3/5/10/15/20 MHz RF bandwidths ● LTE-FDD: Max. 300 Mbps (DL)/50 Mbps (UL) ● LTE-TDD: Max. 226 Mbps (DL)/28 Mbps (UL) ● EG060K-NA ● Supports 3GPP Rel-12 Cat 6 LTE-FDD and LTE-TDD ● Supports UL QPSK and 16QAM modulations ● Supports DL QPSK, 16QAM and 64QAM modulations ● Supports 1.4/3/5/10/15/20 MHz RF bandwidths ● LTE-FDD: Max. 300 Mbps (DL)/50 Mbps (UL) ● LTE-TDD: Max. 226 Mbps (DL)/28 Mbps (UL) ● EG060K-LA ● Supports 3GPP Rel-12 Cat 6 LTE-FDD and LTE-TDD ● Supports UL QPSK and 16QAM modulations ● Supports DL QPSK, 16QAM and 64QAM modulations ● Supports 1.4/3/5/10/15/20 MHz RF bandwidths ● LTE-FDD: Max. 300 Mbps (DL)/50 Mbps (UL) ● LTE-TDD: Max. 226 Mbps (DL)/28 Mbps (UL)
UMTS Features	<ul style="list-style-type: none"> ● Supports 3GPP Rel-9 DC-HSDPA, HSPA+, HSDPA, HSUPA and WCDMA ● Supports QPSK, 16QAM and 64QAM modulations ● Max. transmission data rates: DC-HSDPA: 42 Mbps (DL) HSUPA: 5.76 Mbps (UL) WCDMA: 384 kbps (DL)/384 kbps (UL)
Internet Protocol Features	Supports QMI/MBIM/NITZ/HTTP/HTTPS/FTP/LwM2M*/PING* protocols
SMS	<ul style="list-style-type: none"> ● Text and PDU modes ● Point-to-point MO and MT ● SMS cell broadcast ● SMS storage: ME by default
(U)SIM Interfaces	<ul style="list-style-type: none"> ● Supports (U)SIM card: 1.8/3.0 V ● Supports Dual (U)SIM Single Standby

eSIM	Optional
USB Interface	<ul style="list-style-type: none"> Complies with USB 3.0 and 2.0 specifications, with max. transmission rates up to 5 Gbps on USB 3.0 and 480 Mbps on USB 2.0 Used for AT command communication, data transmission, firmware upgrade, software debugging, GNSS NMEA sentence output Supports USB serial drivers: Windows 8/8.1/10/11, Linux 2.6–6.5, Android 4.x–13.x
UART Interfaces	<p>Main UART interface:</p> <ul style="list-style-type: none"> Used for AT command communication and data transmission Baud rate reaches up to 921600 bps, 115200 bps by default Supports RTS and CTS hardware flow control <p>Debug UART interface:</p> <ul style="list-style-type: none"> Used for Linux console and log output 115200 bps baud rate <p>Bluetooth UART interface*:</p> <ul style="list-style-type: none"> Multiplexed from SPI Used for Bluetooth communication 115200 bps baud rate
SPI	<ul style="list-style-type: none"> Works in master mode only Max. clock frequency rate: 50 MHz
Audio Features	<ul style="list-style-type: none"> Provides one digital audio interface: PCM interface LTE: AMR/AMR-WB Supports echo cancellation and noise suppression
PCM Interface	<ul style="list-style-type: none"> Used for audio function with an external codec or SLIC Supports 16-bit linear data format Supports long and short frame synchronization Supports master and slave modes, but the module must work as master in long frame synchronization
PCIe Interface	<ul style="list-style-type: none"> Complies with <i>PCI Express Base Specification Revision 2.0</i> PCIe x 1, supporting 5 Gbps per lane Used for data transmission RC mode only For WLAN, Ethernet functions
Antenna Interfaces	<ul style="list-style-type: none"> ANT [0:1] ANT_GNSS 50 Ω impedance
Rx-diversity	Supports LTE/WCDMA Rx-diversity
GNSS Features	<ul style="list-style-type: none"> Supports GPS, GLONASS, BDS, and Galileo Protocol: NMEA 0183 Data update rate: 1 Hz
AT Commands	<ul style="list-style-type: none"> Complies with <i>3GPP TS 27.007</i> and <i>3GPP TS 27.005</i> Quectel enhanced AT commands

Network Indication	<ul style="list-style-type: none"> ● NET_MODE ● NET_STATUS ● For network connectivity status indication
Physical Characteristics	<ul style="list-style-type: none"> ● Dimensions: (37.0 ±0.2) mm × (39.5 ±0.2) mm × (2.8 ±0.2) mm ● Package: LGA ● Weight: approx. 9.1 g
Temperature Ranges	<ul style="list-style-type: none"> ● Operating temperature range: -25 to +75 °C ³ ● Extended temperature range: -30 to +85 °C ⁴ ● Storage temperature range: -40 to +90 °C
Firmware Upgrade	<ul style="list-style-type: none"> ● USB 2.0 interface ● DFOTA
RoHS	All hardware components are fully compliant with EU RoHS directive

2.3. Functional Diagram

The following figure shows a block diagram of the module and illustrates the major functional parts.

- Power management

³ To meet the normal operating temperature range requirements, it is necessary to ensure effective thermal dissipation, e.g., by adding passive or active heatsinks, heat pipes, vapor chambers. Within this operation temperature range, the module can meet 3GPP specifications.

⁴ To meet the extended operating temperature range requirements, it is necessary to ensure effective thermal dissipation, e.g., by adding passive or active heatsinks, heat pipes, vapor chambers. Within this extended temperature range, the module remains the ability to establish and maintain functions like SMS, without any unrecoverable malfunction. Radio spectrum and radio network are not influenced, while one or more specifications, such as P_{out}, may undergo a reduction in value, exceeding the specified tolerances of 3GPP. When the temperature returns to the normal operating temperature level, the module will meet 3GPP specifications again.

- Baseband
- LPDDR2 SDRAM + NAND flash
- Radio frequency
- Peripheral interfaces

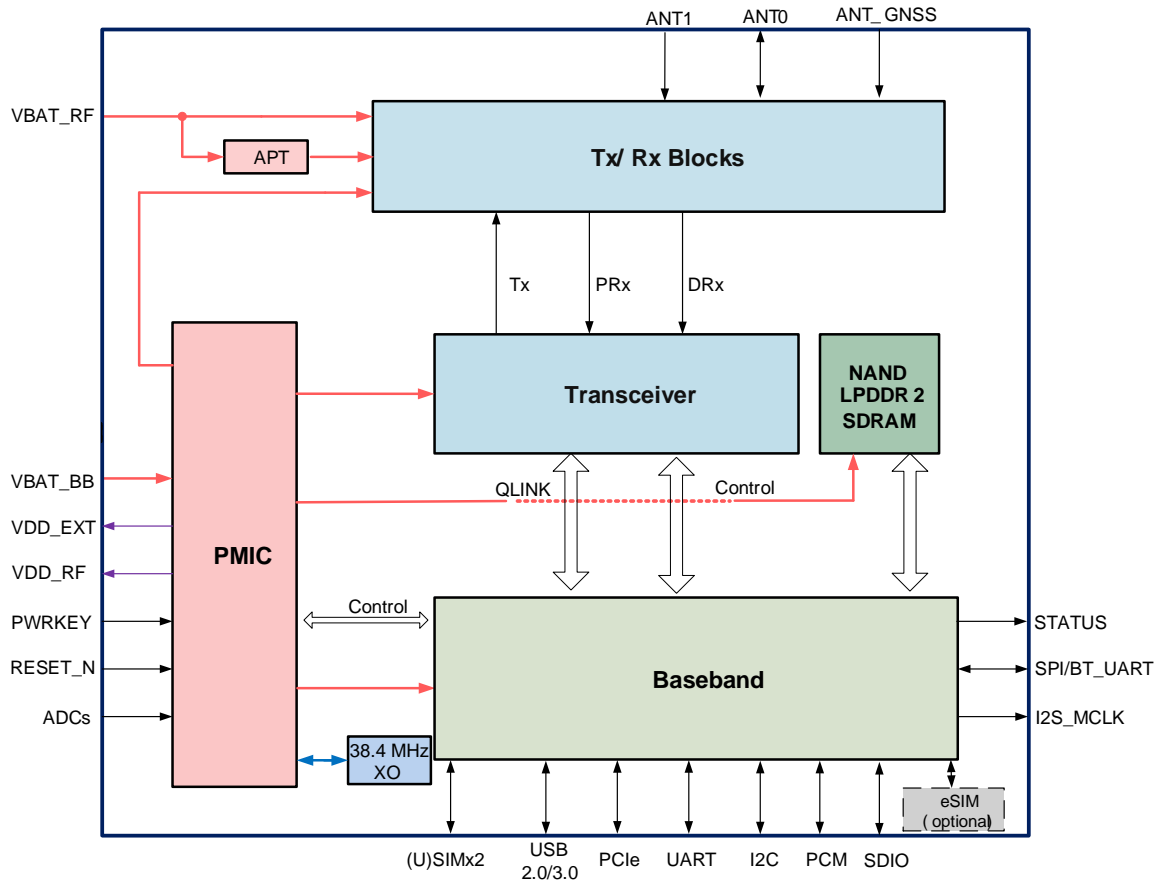


Figure 1: Functional Diagram

2.4. Pin Assignment

The following figure illustrates the pin assignment of the module.

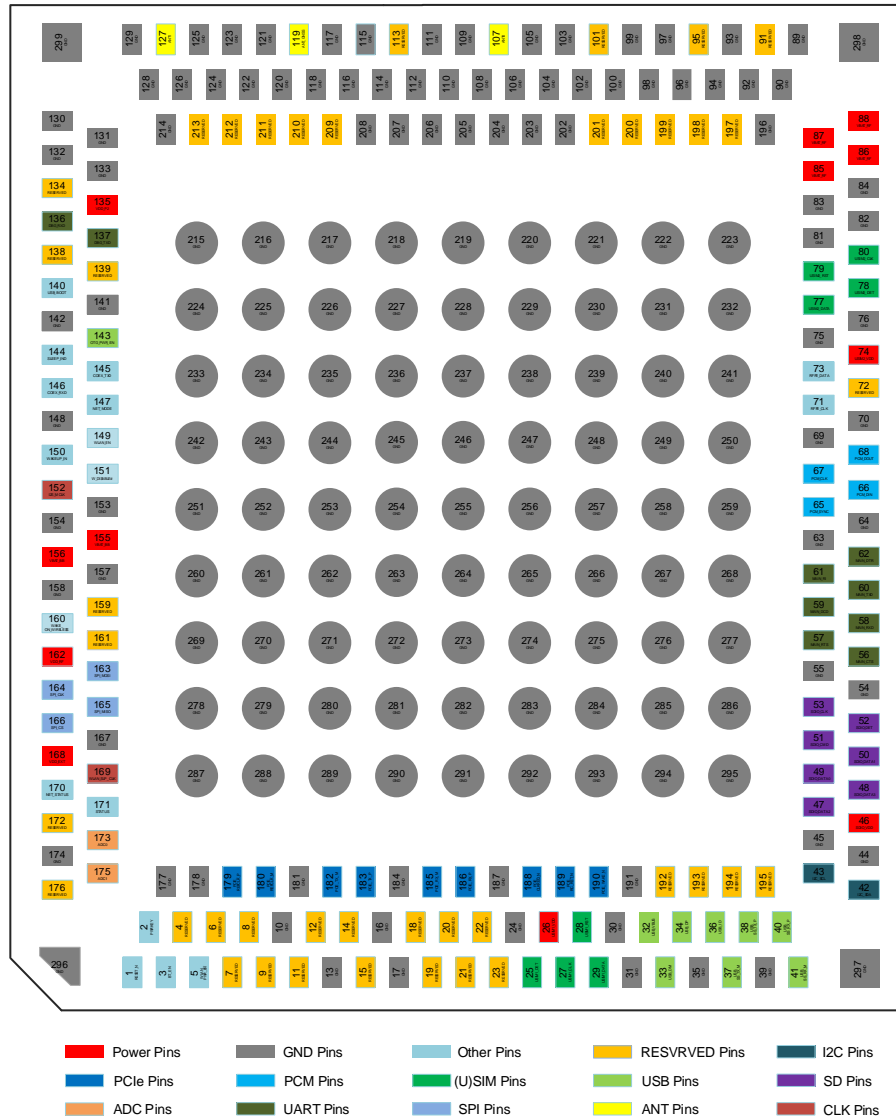


Figure 2: Pin Assignment (Top View)

NOTE

1. Keep all RESERVED pins and unused pins open.
2. GND pins should be connected to ground in the design.
3. Ensure that the pull-up power supply of the module's pins is VDD_EXT or controlled by VDD_EXT, and there is no current sink on the module's pins before the module turns on. For more details, contact Quectel Technical Support.

2.5. Pin Definitions

Table 4: Parameter Definition

Parameter	Description
AI	Analog Input
AO	Analog Output
AIO	Analog Input/Output
DI	Digital Input
DO	Digital Output
DIO	Digital Input/Output
OD	Open Drain
PI	Power Input
PO	Power Output

DC characteristics include power domain and rated current.

Table 5: Pin Description

Power Supply					
Pin Name	Pin No.	I/O	Description	DC Characteristics	Comment
VBAT_BB	155, 156	PI	Power supply for the module's baseband part	Vmax = 4.4 V Vmin = 3.3 V Vnom = 3.8 V	Sufficient current up to 1 A is requisite.
VBAT_RF	85–88	PI	Power supply for the module's RF part		A transmitting burst requires a sufficient current up to 1.2 A.
VDD_EXT	168	PO	Provide 1.8 V for external circuit	Vnom = 1.8 V Iomax = 50 mA	A test point is recommended to be reserved.
VDD_RF	162	PO	Provide 2.85 V for external RF circuit	Vnom = 2.7 V Iomax = 120 mA	If unused, keep it open.
GND	10, 13, 16, 17, 24, 30, 31, 35, 39, 44, 45, 54, 55, 63, 64, 69, 70, 75, 76, 81–84, 89, 90, 92–94, 96–100, 102–106, 108–112, 114–118, 120–126, 128–133, 141, 142, 148, 153, 154, 157, 158, 167, 174, 177, 178, 181, 184, 187, 191, 196, 202–208, 214–299				

Turn On/Off

Pin Name	Pin No.	I/O	Description	DC Characteristics	Comment
RESET_N	1	DI	Reset the module	$V_{IHmin} = 1.17\text{ V}$ $V_{ILmax} = 0.54\text{ V}$	Pulled up to 1.8 V internally. Active low. A test point is recommended to be reserved if unused.
PWRKEY	2	DI	Turn on/off the module		Pulled up to 1.8 V internally. Active low.

Status Indication

Pin Name	Pin No.	I/O	Description	DC Characteristics	Comment
NET_MODE	147	DO	Indicate the module's network registration mode	VDD_EXT	If unused, keep them open.
NET_STATUS	170	DO	Indicate the module's network activity status		
STATUS	171	DO	Indicate the module's operation status		
SLEEP_IND	144	DO	Indicate the module's sleep mode		

(U)SIM Interfaces

Pin Name	Pin No.	I/O	Description	DC Characteristics	Comment
USIM1_DET	25	DI	(U)SIM1 card hot-swap detect	VDD_EXT	If unused, keep it open.
USIM1_VDD	26	PO	(U)SIM1 card power supply	High-voltage: $V_{max} = 3.05\text{ V}$ $V_{nom} = 2.85\text{ V}$ $V_{min} = 2.7\text{ V}$ Low-voltage: $V_{max} = 1.95\text{ V}$ $V_{nom} = 1.8\text{ V}$ $V_{min} = 1.65\text{ V}$	

USIM1_CLK	27	DO	(U)SIM1 card clock		
USIM1_RST	28	DO	(U)SIM1 card reset	USIM1_VDD	
USIM1_DATA	29	DIO	(U)SIM1 card data		
USIM2_VDD	74	PO	(U)SIM2 card power supply	High-voltage: Vmax = 3.05 V Vnom = 2.85 V Vmin = 2.7 V Low-voltage: Vmax = 1.95 V Vnom = 1.8 V Vmin = 1.65 V	If (U)SIM2 interface is unused, keep it open.
USIM2_DATA	77	DIO	(U)SIM2 card data	USIM2_VDD	If (U)SIM2 interface is unused, keep it open.
USIM2_DET	78	DI	(U)SIM2 card detect	VDD_EXT	If (U)SIM2 interface is unused, keep it open.
USIM2_RST	79	DO	(U)SIM2 card reset	USIM2_VDD	If (U)SIM2 interface is unused, keep them open.
USIM2_CLK	80	DO	(U)SIM2 card clock		

USB Interface

Pin Name	Pin No.	I/O	Description	DC Characteristics	Comment
USB_VBUS	32	DI	USB connection detect		Detection threshold: Vmin = 3.3 V Vnom = 5 V Vmax = 5.25 V A test point must be reserved.
USB_DM	33	AIO	USB 2.0 differential data (-)		Comply with USB 2.0 specifications. Require differential impedance of 90 Ω.
USB_DP	34	AIO	USB 2.0 differential data (+)		Test points must be reserved.
USB_SS_TX_M	37	AO	USB 3.0 super-speed transmit (-)		Comply with USB 3.0 specifications.
USB_SS_TX_P	38	AO	USB 3.0 super-speed transmit (+)		Require differential impedance of 90 Ω.

USB_SS_RX_P	40	AI	USB 3.0 super-speed receive (+)	VDD_EXT	If unused, keep them open.
USB_SS_RX_M	41	AI	USB 3.0 super-speed receive (-)		
USB_ID*	36	DI	USB ID detect		
OTG_PWR_EN*	143	DO	OTG power control		

SDIO Interface

Pin Name	Pin No.	I/O	Description	DC Characteristics	Comment
VDD_P2	135	PI	Power input for SDIO interface		If a SD card is used, connect VDD_P2 to SDIO_VDD. If unused, connect VDD_P2 to VDD_EXT.
SDIO_VDD	46	PO	SD card application: SDIO pull up power supply	High-voltage: Vmax = 3.05 V Vnom = 2.85 V Vmin = 2.7 V Low-voltage: Vmax = 1.95 V Vnom = 1.8 V Vmin = 1.65 V	Cannot work as SD card power supply. SD card must be powered by an external power supply.
SDIO_DATA0	49	DIO	SDIO data bit 0	SDIO_VDD	If unused, keep them open.
SDIO_DATA1	50	DIO	SDIO data bit 1		
SDIO_DATA2	47	DIO	SDIO data bit 2		
SDIO_DATA3	48	DIO	SDIO data bit 3		
SDIO_CMD	51	DIO	SDIO command		
SDIO_CLK	53	DO	SDIO clock		
SDIO_DET	52	DI	SD card detect	VDD_EXT	If unused, keep it open.

Main UART Interface

Pin Name	Pin No.	I/O	Description	DC Characteristics	Comment
----------	---------	-----	-------------	--------------------	---------

MAIN_CTS	56	DO	Main UART clear to send	VDD_EXT	Connect to the peripheral's CTS. If unused, keep it open.
MAIN_RTS	57	DI	Main UART request to send		Connect to the peripheral's RTS. If unused, keep it open.
MAIN_RXD	58	DI	Main UART receive		
MAIN_DCD	59	DO	Main UART data carrier detect		If unused, keep them open.
MAIN_TXD	60	DO	Main UART transmit		
MAIN_RI	61	DO	Main UART ring indication		
MAIN_DTR	62	DI	Main UART data terminal ready		Pulled up by default. Pulling low will awaken the module. If unused, keep it open. Sleep mode control.

Debug UART Interface

Pin Name	Pin No.	I/O	Description	DC Characteristics	Comment
DBG_RXD	136	DI	Debug UART receive	VDD_EXT	Test points must be reserved.
DBG_TXD	137	DO	Debug UART transmit		

SPI Interface

Pin Name	Pin No.	I/O	Description	DC Characteristics	Comment
SPI_MOSI	163	DO	SPI master-out slave-in	VDD_EXT	If unused, keep it open. It can be multiplexed into BT_TXD*.
SPI_CLK	164	DO	SPI clock		If unused, keep it open. It can be multiplexed into BT_CTS*.
SPI_MISO	165	DI	SPI master-in slave-out		If unused, keep it open. It can be multiplexed into BT_RXD*.
SPI_CS	166	DO	SPI chip select		If unused, keep it open. It can be multiplexed into BT_RTS*.

PCM and I2C Interfaces

Pin Name	Pin No.	I/O	Description	DC Characteristics	Comment
I2C_SDA	42	OD	I2C serial data (for an external codec)	VDD_EXT	An external pull-up resistor is requisite.
I2C_SCL	43	OD	I2C serial clock (for an external codec)		If unused, keep them open.
PCM_SYNC	65	DIO	PCM data frame sync		Output signal in master mode. Input signal in slave mode. If unused, keep it open.
PCM_DIN	66	DI	PCM data input		If unused, keep it open.
PCM_CLK	67	DIO	PCM clock		Output signal in master mode. Input signal in slave mode. If unused, keep it open.
PCM_DOUT	68	DO	PCM data output		If unused, keep it open.
I2S_MCLK	152	DO	Clock output for codec		Provide a digital clock output for an external codec. If unused, keep it open.

Antenna Interfaces

Pin Name	Pin No.	I/O	Description	DC Characteristics	Comment
ANT0	107	AIO	Main antenna interface		50 Ω impedance.
ANT1	127	AI	Rx-diversity antenna interface		50 Ω impedance If unused, keep them open.
ANT_GNSS	119	AI	GNSS antenna interface		

WLAN Control Interface*

Pin Name	Pin No.	I/O	Description	DC Characteristics	Comment
WLAN_PWR_EN	5	DO	WLAN power supply enable control	VDD_EXT	If unused, keep them open.

COEX_TXD	145	DO	LTE/WLAN coexistence transmit		
COEX_RXD	146	DI	LTE/WLAN coexistence receive		
WLAN_EN	149	DO	WLAN function enable control		Active high. If unused, keep it open.
WAKE_ON_WIRELESS	160	DI	Awaken the host (the module) via an external Wi-Fi module		Active low. If unused, keep it open.
WLAN_SLP_CLK	169	DO	WLAN sleep clock		If unused, keep it open.

ADC Interfaces

Pin Name	Pin No.	I/O	Description	DC Characteristics	Comment
ADC0	173	AI	General-purpose ADC interface	0–1.875 V	If unused, keep them open.
ADC1	175	AI			

PCIe Interface

Pin Name	Pin No.	I/O	Description	DC Characteristics	Comment
PCIE_REFCLK_P	179	AO	PCIe reference clock (+)	VDD_EXT	Require differential impedance of 95 Ω. If unused, keep them open.
PCIE_REFCLK_M	180	AO	PCIe reference clock (-)		
PCIE_TX_M	182	AO	PCIe transmit (-)		
PCIE_TX_P	183	AO	PCIe transmit (+)		
PCIE_RX_M	185	AI	PCIe receive (-)		
PCIE_RX_P	186	AI	PCIe receive (+)		
PCIE_CLKREQ_N	188	DI	PCIe clock request	VDD_EXT	Input signal in master mode. If unused, keep it open.
PCIE_RC_RST_N	189	DO	PCIe RC reset		Output signal in master mode. If unused, keep it open.
PCIE_WAKE_N	190	DI	PCIe awake		Input signal, in master

mode only.
If unused, keep it open.

Antenna Tuner Control Interfaces* (RFFE Interface)

Pin Name	Pin No.	I/O	Description	DC Characteristics	Comment
RFFE_CLK	71	DO	Used for external MIPI IC control	VDD_EXT	If unused, keep them open.
RFFE_DATA	73	DIO	Used for external MIPI IC control		

Other Pins

Pin Name	Pin No.	I/O	Description	DC Characteristics	Comment
USB_BOOT	140	DI	Force the module into download mode	VDD_EXT	Active high. A test point is recommended to be reserved.
BT_EN*	3	DO	Bluetooth function enable control		If unused, keep it open.
WAKEUP_IN	150	DI	Wake up the module		Pulled up by default. Low level awakens the module. If unused, keep it open.
W_DISABLE#	151	DI	Airplane mode control		Pulled up by default. In low level, the module will enter airplane mode. If unused, keep it open.

RESERVED Pins

Pin Name	Pin No.	Comment
RESERVED	4, 6–9, 11, 12, 14, 15, 18–23, 72, 91, 95, 101, 113, 134, 138, 139, 159, 161, 172, 176, 192–195, 197–201, 209–213	Keep these pins open.

2.6. EVB Kit

Quectel supplies an evaluation board (UMTS & LTE EVB R2.0) with accessories to develop and test the module. For more details, see **document [2]**.

3 Operating Characteristics

3.1. Operating Modes

Table 6: Overview of Operating Modes

Mode	Details
Full Functionality Mode	Idle Software is active. The module has registered on the network, and it is ready to send and receive data.
	Data Network is connected. In this mode, the power consumption is decided by network setting and data transmission rate.
Minimum Functionality Mode	AT+CFUN=0 sets the module to minimum functionality mode without removing the power supply. In this case, both RF function and (U)SIM card are invalid.
Airplane Mode	AT+CFUN=4 or driving W_DISABLE# low will set the module to airplane mode. In this case, the RF function is invalid.
Sleep Mode	When AT+QSCLK=1 is executed and the host's USB bus enters Suspend state, the module will enter sleep mode. The module keeps receiving paging messages, SMS and TCP/UDP data from the network with its power consumption reducing to the minimal level.
Power Down Mode	In this mode, the power management unit shuts down the power supply. Software is inactive, all application interfaces are inaccessible, and the operating voltage (connected to VBAT_RF and VBAT_BB) remains applied.

NOTE

See *document [3]* for details about **AT+CFUN=0**, **AT+CFUN=4** and **AT+QSCLK=1**.

3.1.1. Sleep Mode

DRX can reduce the power consumption of the module to an ultra-low level during sleep mode, and DRX cycle index values are broadcasted by the wireless network. The figure below shows the relationship between the DRX run time and the power consumption in sleep mode. The longer the DRX cycle is, the lower the power consumption will be.

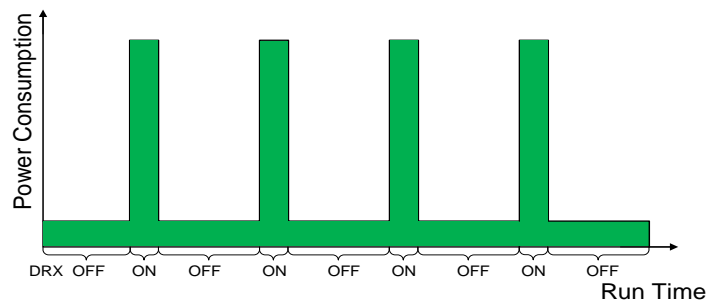


Figure 3: DRX Run Time and Power Consumption in Sleep Mode

NOTE

DRX cycle values are transmitted over the wireless network.

The following part of this section presents the power saving procedure and sleep mode of the module.

3.1.1.1. UART Application

If the host communicates with the module via UART interfaces, the following two conditions must be met simultaneously to bring the module into sleep mode.

- Execute **AT+QSCCLK=1**.
- Drive MAIN_DTR high.

The following figure shows the connection between the module and the host.

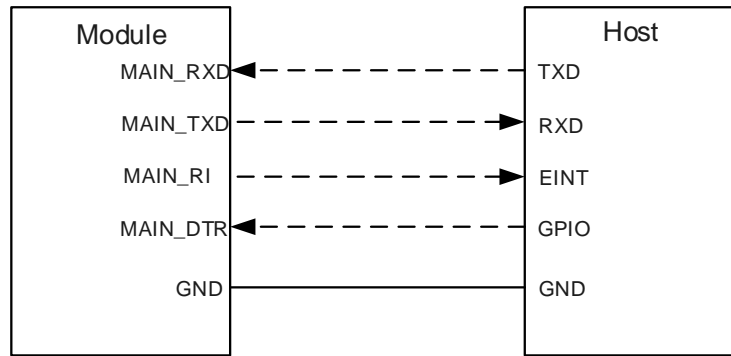


Figure 4: Sleep Mode Application via UART Interfaces

Driving MAIN_DTR low will wake up the module. When the module has a URC to report, MAIN_RI signal will wake up the host. See **Chapter 4.8** for details about MAIN_RI behavior.

3.1.1.2.USB Application

USB application can be applied with USB remote wake-up function or USB Suspend/Resume and RI functions.

If the host supports USB Suspend/Resume and remote wake-up function, meeting the following three requirements will bring the module into sleep mode.

- Execute **AT+QSCLK=1**.
- Keep MAIN_DTR high (pulled up by default).
- The host's USB bus, connected to the module's USB interface, has entered Suspend state.

The following figure shows the above-mentioned connection between the module and the host.

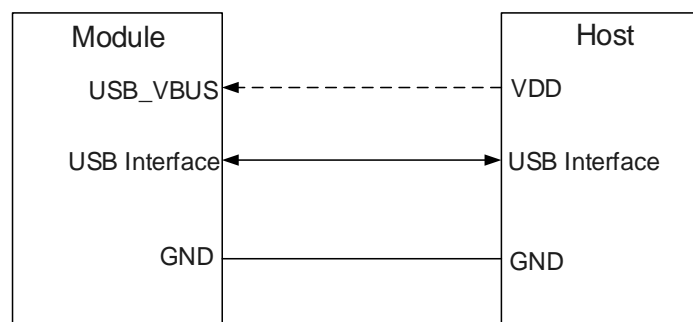


Figure 5: Sleep Mode Application with USB Remote Wake-up

Sending data to the module through USB will wake up the module. When the module has a URC to report, the module will send remote wake-up signals via USB bus to awaken the host.

If the host supports USB Suspend/Resume but does not support remote wake-up function, meeting the following three requirements will bring the module into sleep mode.

- Execute **AT+QSCCLK=1**.
- Keep MAIN_DTR high (pulled up by default).
- The host's USB bus, connected with the module's USB interface, has entered Suspend state.

The following figure shows the connection between the module and the host.

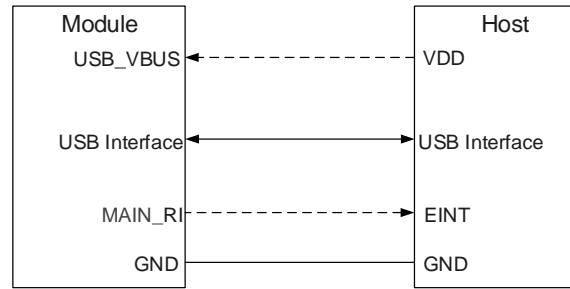


Figure 6: Sleep Mode Application with Suspend function

Sending data to the module through USB will awaken the module. When the module has a URC to report, MAIN_RI will wake up the host.

If the host does not support USB Suspend function, USB_VBUS should be disconnected with an external control circuit to bring the module into sleep mode.

- Execute **AT+QSCCLK=1**.
- Keep MAIN_DTR high (pulled up by default).
- Disconnect USB_VBUS.

The following figure shows the above-mentioned connection between the module and the host.

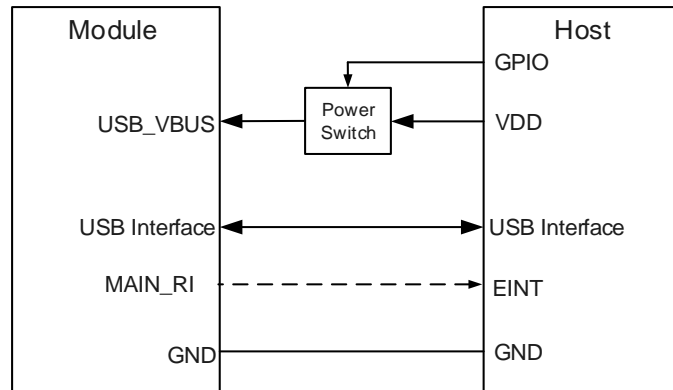


Figure 7: Sleep Mode Application without Suspend Function

To awaken the module, power USB_VBUS by turning on the power switch.

NOTE

Pay attention to the level match shown in dotted line between the module and the host.

3.1.2. Airplane Mode

The module provides W_DISABLE# to disable or enable airplane mode via hardware operation. W_DISABLE# is pulled up by default. Driving it low will bring the module into airplane mode.

Table 7: Pin Description of W_DISABLE#

Pin Name	Pin No.	I/O	Description	Comment
W_DISABLE#	151	DI	Airplane mode control	Pulled up by default. In low level, the module will enter airplane mode. If unused, keep it open.

In airplane mode, the RF function is disabled by default, but it can also be enabled or disabled through AT commands. The following table shows the RF function status of the module.

Table 8: RF Function Status

W_DISABLE# Logic Level	AT Command	RF Function Status	Operating Mode
High Level	AT+CFUN=1	Enable	Full functionality mode
	AT+CFUN=0	Disable	Minimum functionality mode
	AT+CFUN=4	Disable	Airplane mode
Low Level	AT+CFUN=0	Disable	Airplane mode
	AT+CFUN=1		
	AT+CFUN=4		

NOTE

1. W_DISABLE# for airplane mode control function is disabled by default.
2. The execution of **AT+CFUN** will not affect GNSS function.
3. See **document [3]** for details about related AT commands mentioned in the above table.

3.2. Power Supply

3.2.1. Power Supply Pins

The module provides six VBAT pins dedicated to the connection to an external power supply. There are two separate voltage domains for VBAT.

- Four VBAT_RF pins for module's RF part.
- Two VBAT_BB pins for module's baseband part.

The following table shows details of VBAT pins and ground pins.

Table 9: VBAT and GND Pins

Pin Name	Pin No.	I/O	Description	Min.	Typ.	Max.	Unit
VBAT_RF	85–88	PI	Power supply for the module's RF part	3.3	3.8	4.4	V
VBAT_BB	155, 156	PI	Power supply for the module's baseband part	3.3	3.8	4.4	V
GND	10, 13, 16, 17, 24, 30, 31, 35, 39, 44, 45, 54, 55, 63, 64, 69, 70, 75, 76, 81–84, 89, 90, 92–94, 96–100, 102–106, 108–112, 114–118, 120–126, 128–133, 141, 142, 148, 153, 154, 157, 158, 167, 174, 177, 178, 181, 184, 187, 191, 196, 202–208, 214–299						

The power supply of the module ranges from 3.3 V to 4.4 V. Make sure the input voltage never drops below 3.3 V, otherwise the module will be turned off automatically. The following figure shows the voltage drop during Tx power in 3G/4G networks.

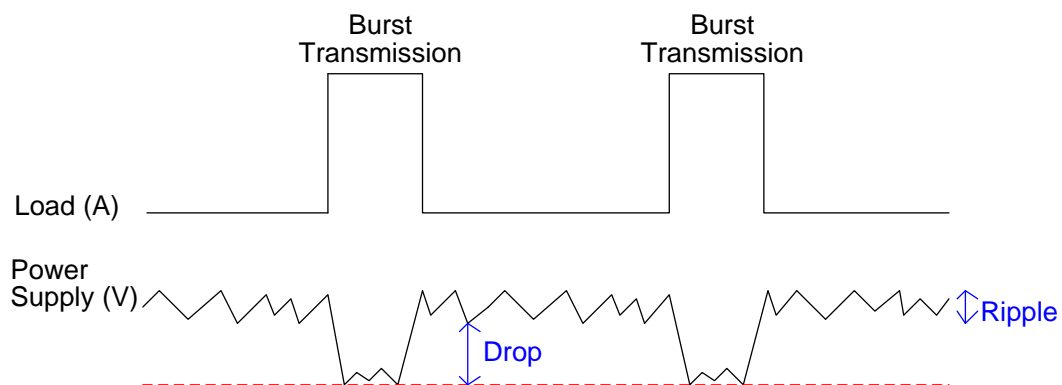


Figure 8: Power Supply Limits during Burst Transmission

To decrease voltage's drop, one bypass capacitor of about 100 μF with low ESR should be used, and a multi-layer ceramic chip (MLCC) capacitor array should also be reserved due to their ultra-low ESR. It is recommended to adopt ceramic capacitors for composing the MLCC array, and place these capacitors close to VBAT pins. The main power supply from an external application must be a single voltage source which can be expanded to two sub paths with star structure. The width of VBAT_BB trace should be not less than 2 mm, and the width of VBAT_RF should be not less than 2 mm. In principle, the longer the VBAT trace is, the wider it should be.

In addition, for stable power supply, it is necessary to add a high-power TVS near VBAT_BB and VBAT_RF. The star structure of the power supply is shown below.

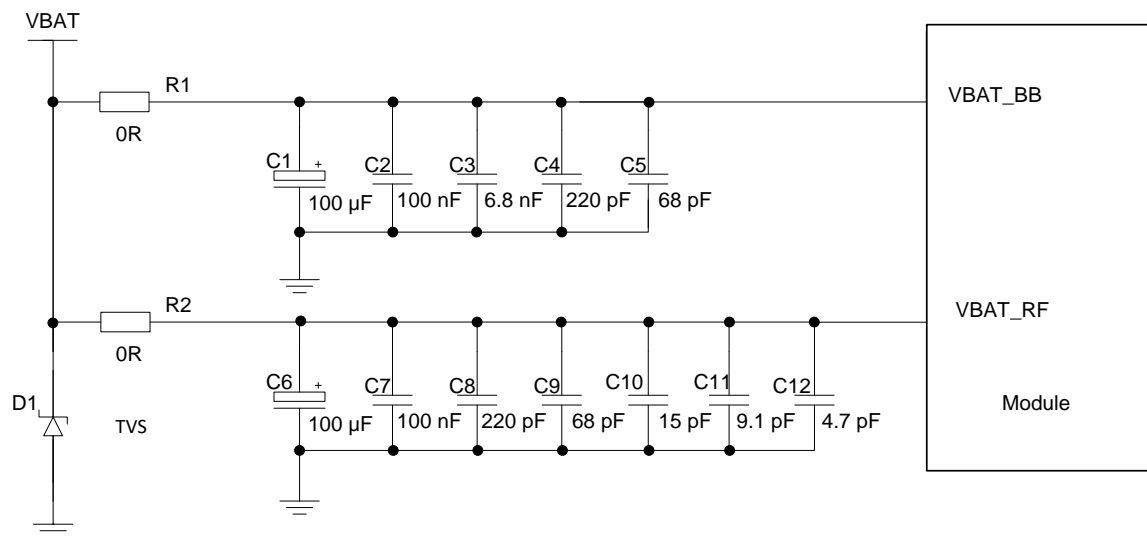


Figure 9: Star Structure of the Power Supply

3.2.2. Reference Design for Power Supply

The performance of the module largely depends on the power supply design. The continuous current of the power supply should be at least 2 A and the peak current should be at least 3 A.

The following figure shows a reference design for +5 V input power source. In this design, the typical power supply output is about 3.8 V.

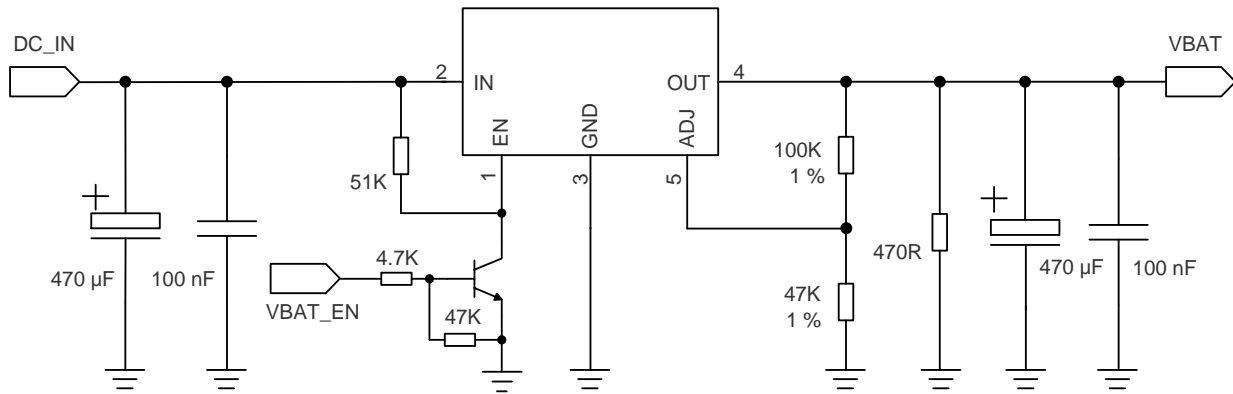


Figure 10: Reference Circuit of Power Supply

NOTE

To avoid corrupting the data in the internal flash, do not switch off the power supply when the module works normally. Only after shutting down the module with PWRKEY or AT command can you cut off the power supply.

3.2.3. Power Supply Voltage Monitoring

AT+CBC can monitor the VBAT_BB voltage value. See [document \[3\]](#) for details.

3.3. Turn On

The module can be turned on via PWRKEY.

Table 10: PWRKEY Pin Description

Pin Name	Pin No.	I/O	Description	Comment
PWRKEY	2	DI	Turn on/off the module	Pulled-up internally. Active low.

When the module is in turn-off mode, it can be turned on by driving PWRKEY low for at least 500 ms. It is recommended to control PWRKEY with an open drain/collector driver. After STATUS outputs a high level, PWRKEY can be released. A simple reference circuit is given below.

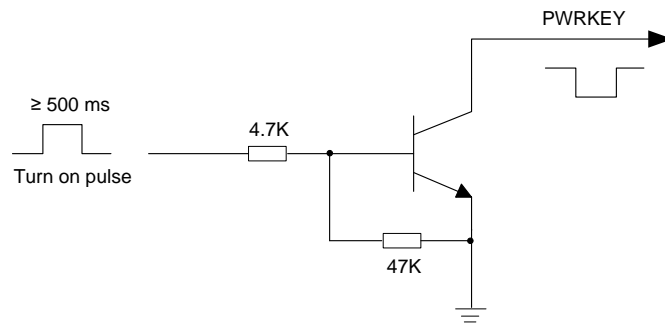


Figure 11: Turn On the Module with a Driving Circuit

Another way to control the PWRKEY is using a button directly. When you are pressing the key, electrostatic strike may be generated from finger. Therefore, it is necessary to place a TVS component nearby the button for ESD protection. A reference circuit is shown in the following figure.

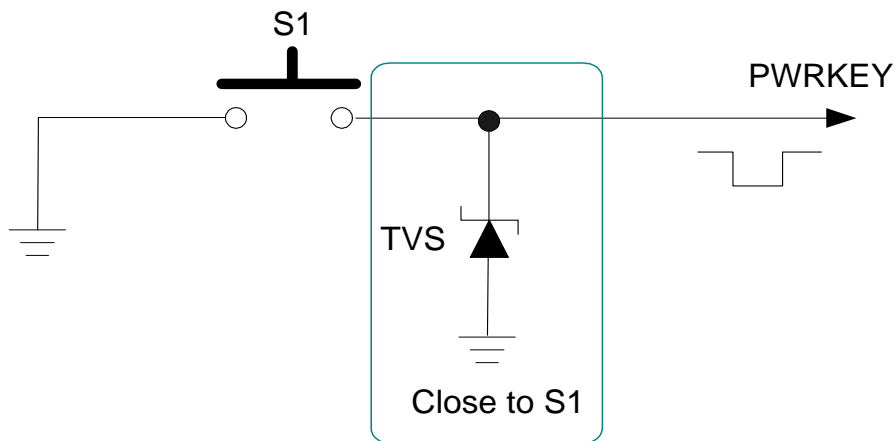


Figure 12: Turn On the Module With a Button

The turn-on timing is illustrated in the following figure.

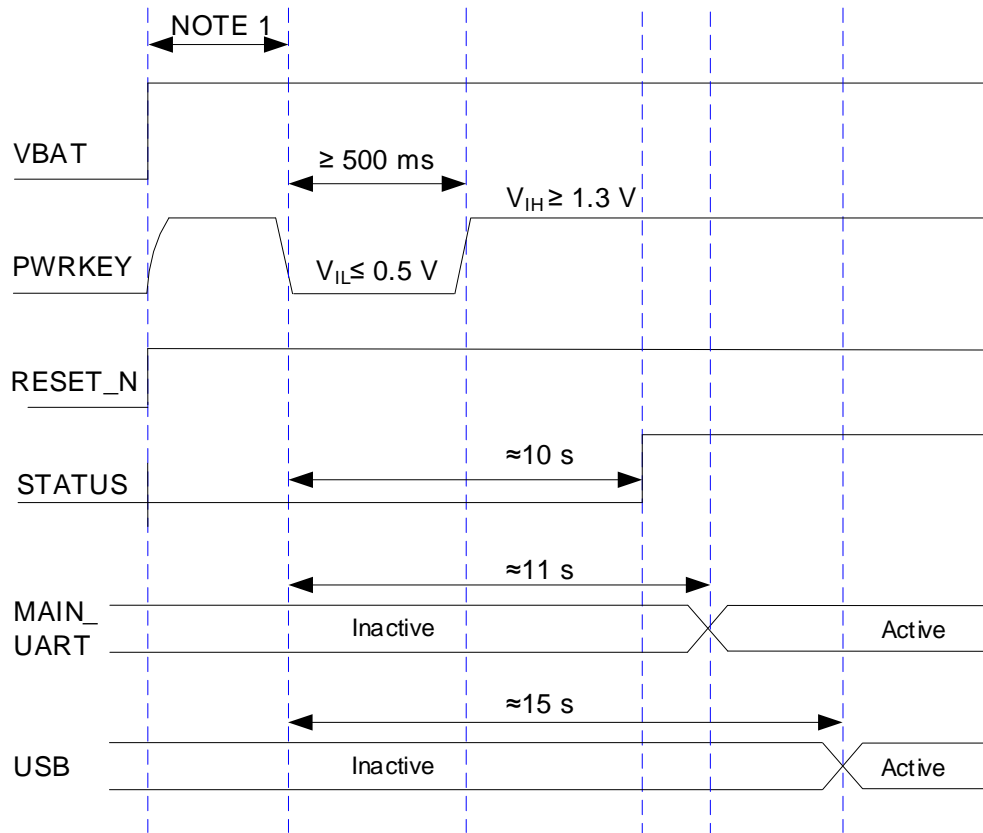


Figure 13: Power-up Timing

NOTE

1. Make sure VBAT has been stable for over 30 ms before pulling down PWRKEY pin.
2. If the module needs to be turned on automatically and turn-off is not needed, PWRKEY can be pulled down directly to GND with a recommended 10 kΩ resistor.
3. Make sure there is no large capacitance on PWRKEY and RESET_N pins.

3.4. Turn Off

The module can be turned off normally via two methods: using PWRKEY or executing **AT+QPOWD**. See [document \[3\]](#) for details about the AT command.

3.4.1. Turn Off with PWRKEY

Drive PWRKEY low for at least 800 ms, the module will execute the power-down procedure after PWRKEY is released. The turn-off timing is illustrated in the following figure.

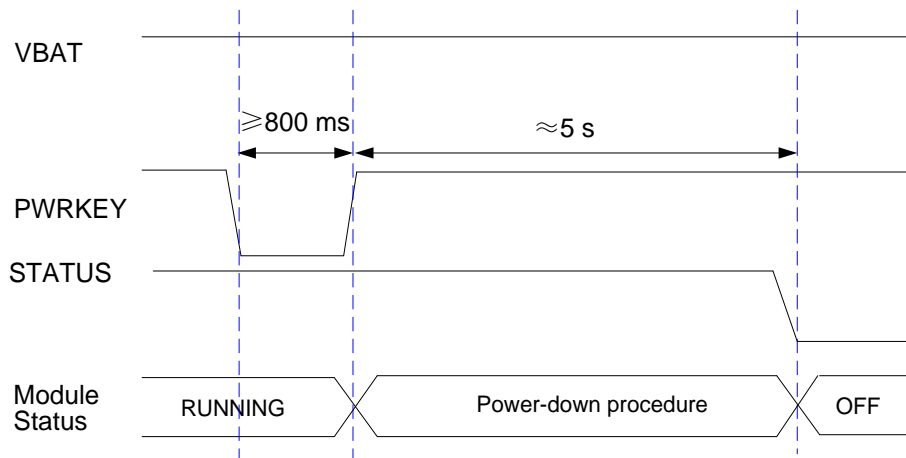


Figure 14: Power-down Timing

3.4.2. Turn Off with AT Command

It is also a safe manner to turn off the module via **AT+QPOWD**. When turning off module with the AT command, keep PWRKEY at high level after the execution of the command. Otherwise the module will be turned on again after a successfully turn-off. See [document \[3\]](#) for details about the AT command.

NOTE

1. To avoid corrupting the data in the internal flash, do not switch off the power supply when the module works normally. Only after turning off the module with PWRKEY or AT command can you cut off the power supply.
2. When turning off module with the AT command, keep PWRKEY at high level after the execution of the command. Otherwise the module will be turned on again after successfully turn-off.

3.5. Reset

The module can be reset by driving RESET_N low for 250-600 ms and then releasing it.

Table 11: RESET_N Pin Description

Pin Name	Pin No.	I/O	Description	Comment
RESET_N	1	DI	Reset the module	Pulled up internally. Active low. A test point is recommended to be reserved if unused.

The recommended circuit is similar to the PWRKEY control circuit. You can use an open drain/collector driver or button to control RESET_N.

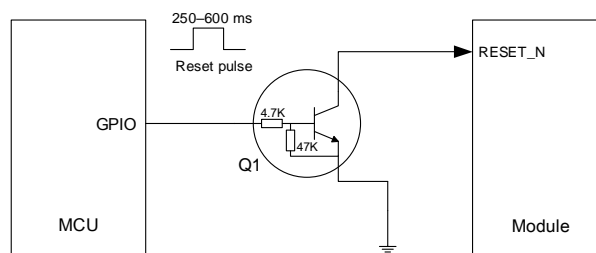


Figure 15: Reference Circuit of RESET_N with a Driving Circuit

The reset timing is illustrated in the following figure.

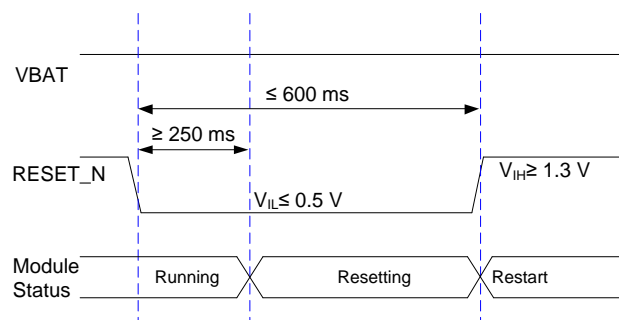


Figure 16: Reset Timing

NOTE

1. Use RESET_N only when you fail to turn off the module with the **AT+QPOWD** and PWRKEY.
2. Ensure that there is no large capacitance on PWRKEY and RESET_N pins.

4 Application Interfaces

The module is designed with 299 LGA pins that can be connected to cellular application platform. This chapter mainly describes the following application interfaces and indication signals of the module:

- (U)SIM interfaces
- USB interface
- UART interfaces
- SPI ⁵
- PCM and I2C interfaces
- ADC interfaces
- Network status indication
- Module status indication
- RI
- PCIe interface
- SDIO interface
- Antenna tuner control interfaces*
- USB_BOOT interface

⁵ SPI can be multiplexed as Bluetooth UART interface*.

4.1. (U)SIM Interfaces

The module provides two (U)SIM interfaces. The circuitry of (U)SIM interfaces meets ETSI and IMT-2000 requirements. Both 1.8 V and 3.0 V (U)SIM cards are supported, and Dual SIM Single Standby function is supported. (U)SIM card hot-swap is enabled by **AT+QUIMSL0T**. See **document [3]** for details about the AT command.

Table 12: Pin Description of (U)SIM Interfaces

Pin Name	Pin No.	I/O	Description	Comment
USIM1_DET	25	DI	USIM1 card hot-swap detect	If unused, keep it open.
USIM1_VDD	26	PO	USIM1 card power supply	
USIM1_CLK	27	DO	USIM1 card clock	
USIM1_RST	28	DO	USIM1 card reset	
USIM1_DATA	29	DIO	USIM1 card data	
USIM2_VDD	74	PO	USIM2 card power supply	If USIM2 interface is unused, keep it open.
USIM2_DATA	77	DIO	USIM2 card data	If USIM2 interface is unused, keep it open.
USIM2_DET	78	DI	USIM2 card hot-swap detect	If USIM2 interface is unused, keep it open.
USIM2_RST	79	DO	USIM2 card reset	If USIM2 interface is unused, keep them open.
USIM2_CLK	80	DO	USIM2 card clock	

The module supports (U)SIM card hot-swap via USIM_DET pins, and both high and low level detection are supported. The function is disabled by default, and see **AT+QSIMDET** in **document [3]** for more details.

The following figure shows a reference design for (U)SIM interfaces with an 8-pin (U)SIM card connector.

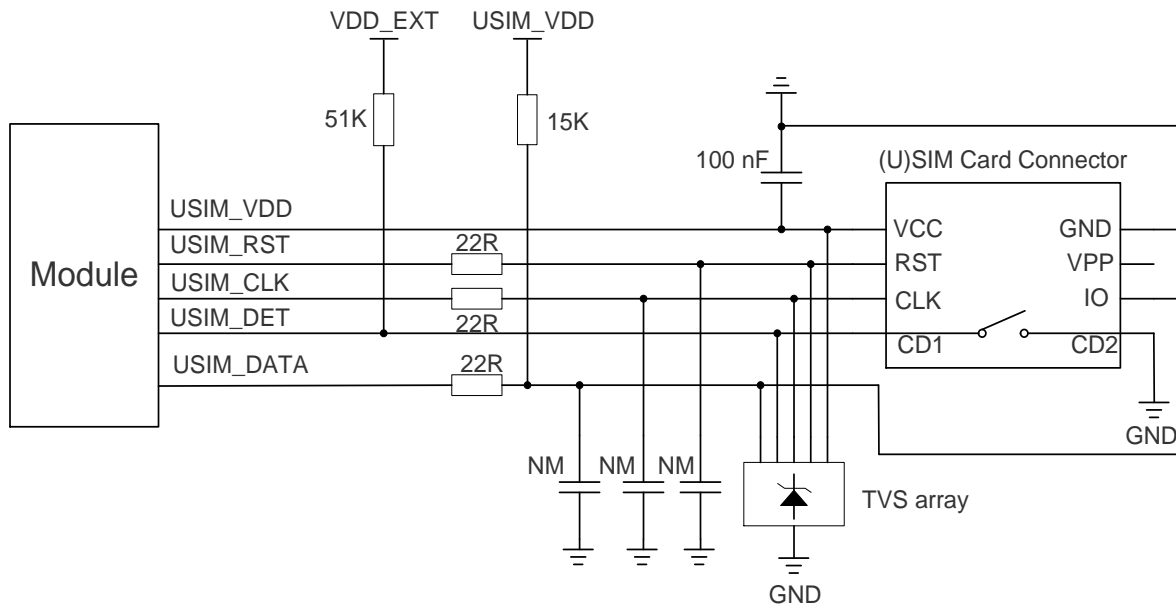


Figure 17: Reference Circuit of (U)SIM Interfaces with an 8-Pin (U)SIM Card Connector

If (U)SIM card detection function is unnecessary, keep USIM_DET open. A reference circuit for (U)SIM interfaces with a 6-pin (U)SIM card connector is illustrated in the following figure.

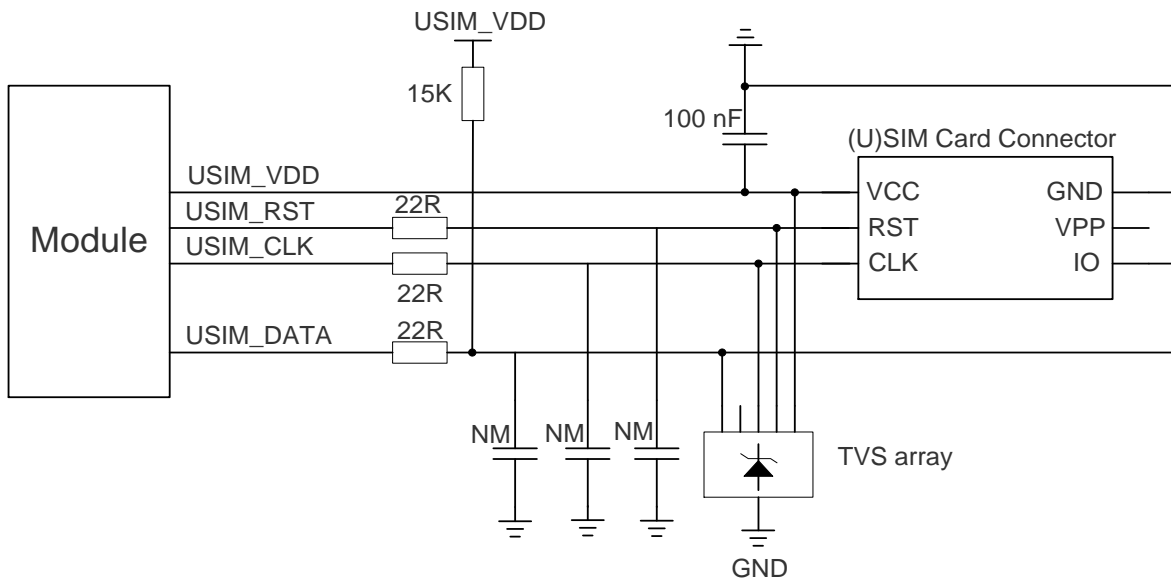


Figure 18: Reference Circuit of (U)SIM Interfaces with a 6-Pin (U)SIM Card Connector

For better reliability and availability of the (U)SIM card in applications, follow the criteria below in the (U)SIM circuit design:

- Put the (U)SIM card connector as close as possible to the module. Keep the trace length as short as possible, at most 200 mm.
- Keep (U)SIM card signals away from RF and VBAT traces.
- Make sure the ground between the module and the (U)SIM card connector is short and wide. Keep the trace width of ground and USIM_VDD not less than 0.5 mm to maintain the same electric potential.
- To avoid cross-talk between USIM_DATA and USIM_CLK, keep them away from each other and shield them with surrounded ground.
- For better ESD protection, it is recommended to add an ESD protection component of which parasitic capacitance should be less than 50 pF. 22 Ω resistors should be added in series between the module and the (U)SIM card connector to facilitate debugging. The (U)SIM peripheral circuit should be close to the (U)SIM card connector.
- The pull-up resistor on USIM_DATA trace can improve anti-jamming capability with the application of long layout trace and sensitive occasions, and it should be close to the (U)SIM card connector.

4.2. USB Interface

The module provides one integrated USB (Universal Serial Bus) interface which complies with the USB 3.0 and 2.0 specifications and supports SuperSpeed (5 Gbps) mode on USB 3.0 and high-speed (480 Mbps) and full-speed (12 Mbps) modes on USB 2.0. The USB interface is used for AT command communication, data transmission, GNSS NMEA sentence output, software debugging, firmware upgrade.

Table 13: Pin Description of USB Interface

Pin Name	Pin No.	I/O	Description	Comment
USB_VBUS	32	DI	USB connection detect	Typical 5.0 V A test point must be reserved.
USB_DP	34	AIO	USB 2.0 differential data (+)	Comply with USB 2.0 specifications. Require differential impedance of 90 Ω .
USB_DM	33	AIO	USB 2.0 differential data (-)	Test points must be reserved.
USB_SS_TX_M	37	AO	USB 3.0 super-speed transmit (-)	Comply with USB 3.0

USB_SS_TX_P	38	AO	USB 3.0 super-speed transmit (+)	specifications. Require differential impedance of 90 Ω .
USB_SS_RX_P	40	AI	USB 3.0 super-speed receive (+)	
USB_SS_RX_M	41	AI	USB 3.0 super-speed receive (-)	
USB_ID*	36	DI	USB ID detect	If unused, keep it open.
OTG_PWR_EN*	143	DO	OTG power control	

For more details about the USB 2.0 and USB 3.0 specifications, visit <http://www.usb.org/home>.

The USB 2.0 interface must be reserved for firmware upgrade in your designs. The following figure shows a reference circuit of USB 2.0 and USB 3.0 interfaces.

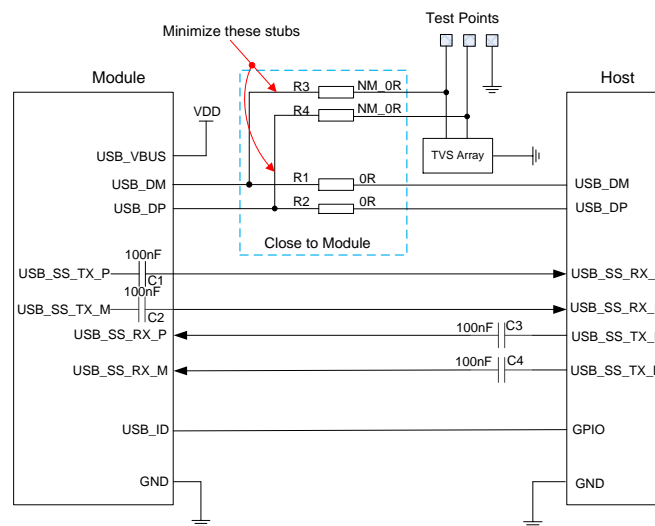


Figure 19: Reference Circuit of USB Application

To ensure the signal integrity of USB data traces, C1, and C2 have already been integrated in the module; C3 and C4 must be placed close to the host; and R1 to R4 should be placed close to each other. The extra stubs of trace must be as short as possible.

The following principles of USB interface should be followed during USB interface design to meet USB 2.0 and USB 3.0 specifications.

- Route the USB 2.0 and USB 3.0 signal traces as differential pairs with ground surrounded. The impedance of USB differential trace is 90 Ω .
- For USB 2.0 signal traces, the trace should be shorter than 120 mm, and the differential data pair matching should be less than 2 mm. For USB 3.0 signal traces, the maximum length of each differential data pair (Tx/Rx) is recommended to be less than 100 mm, and each differential data pair matching should be less than 0.7 mm. While the matching between Tx and Rx should be less

than 15.24 mm.

- Do not route signal traces under crystals, oscillators, magnetic devices, PCIe and RF signal traces. It is vital to route the USB differential traces in inner-layers of the PCB, and surround the traces with ground on that layer and with ground planes above and below.
- If a USB connector is used, keep the ESD protection components as close to the USB connector as possible.
- Pay attention to the selection of the ESD protection component since the component's junction capacitance may cause influences on USB data traces. Typically, the stray capacitance should be less than 2.0 pF for USB 2.0, and less than 0.4 pF for USB 3.0.
- If possible, reserve a 0 Ω resistor on USB_DP and USB_DM traces respectively.

Table 14: USB Trace Length Inside the Module

Pin No.	Pin Name	Length (mm)	Length Difference (P-M) (mm)
34	USB_DP	16.02	0.32
33	USB_DM	16.34	
37	USB_SS_TX_M	20.57	0.36
38	USB_SS_TX_P	20.21	
40	USB_SS_RX_P	19.62	0.16
41	USB_SS_RX_M	19.46	

4.3. UART Interfaces

The module provides three UART interfaces: one main UART interface, one debug UART interface, and one Bluetooth UART interface* (multiplexed from SPI). Features of these interfaces are shown as below:

- Main UART interface supports 4800 bps, 9600 bps, 19200 bps, 38400 bps, 57600 bps, 115200 bps (default), 230400 bps, 460800 bps and 921600 bps baud rates. This interface is used for data transmission and AT command communication.
- Debug UART interface supports 115200 bps baud rate. It is used for Linux console and log output.
- Bluetooth UART interface supports 115200 bps baud rate. It is used for Bluetooth communication and can be multiplexed from SPI.

4.3.1. Main UART Interface

Table 15: Pin Description of Main UART Interface

Pin Name	Pin No.	I/O	Description	Comment
MAIN_CTS	56	DO	Main UART clear to send	Connect to the peripheral's CTS. If unused, keep it open.
MAIN_RTS	57	DI	Main UART request to send	Connect to the peripheral's RTS. If unused, keep it open.
MAIN_RXD	58	DI	Main UART receive	
MAIN_DCD	59	DO	Main UART data carrier detect	
MAIN_TXD	60	DO	Main UART transmit	
MAIN_RI	61	DO	Main UART ring indication	
MAIN_DTR	62	DI	Main UART data terminal ready	Pulled up by default. Pulling low will awaken the module. If unused, keep it open. Sleep mode control.

4.3.2. Debug UART Interface

Table 16: Pin Definition of Debug UART Interface

Pin Name	Pin No.	I/O	Description	Comment
DBG_RXD	136	DI	Debug UART receive	Test points must be reserved.
DBG_TXD	137	DO	Debug UART transmit	

4.3.3. Bluetooth UART Interface*

The module provides one Bluetooth UART interface multiplexed from SPI. The following table shows the Bluetooth UART interface pin definition.

Table 17: Pin Description of Bluetooth UART Interface

Pin Name	Pin No.	Multiplexed Function	I/O	Description	Comment
BT_EN	3	-	DO	Bluetooth function enable control	If unused, keep it open.
SPI_MOSI	163	BT_TXD	DO	Bluetooth UART transmit	
SPI_CLK	164	BT_CTS	DO	Clear to send signal from the module	Connect to the peripheral's CTS.
SPI_MISO	165	BT_RXD	DI	Bluetooth UART receive	
SPI_CS	166	BT_RTS	DO	Request to send signal to the module	Connect to the peripheral's RTS.

4.3.4. UART Application

The module provides 1.8 V UART interfaces. A level-shifting circuit should be used if the application is equipped with a 3.3 V UART interface. A voltage-level translator TXS0108EPWR provided by Texas Instruments is recommended. The following figure shows a reference design.

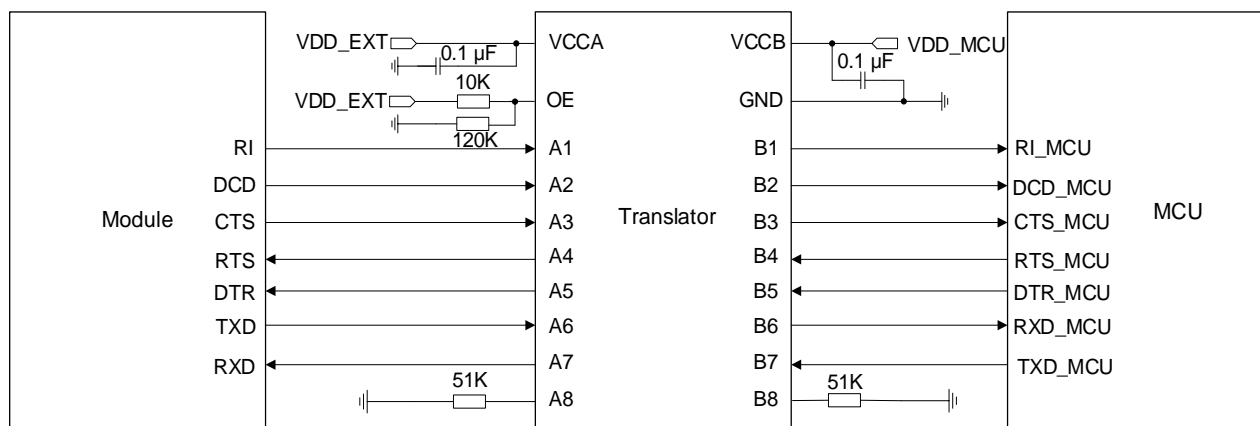


Figure 20: Reference Circuit with Translator Chip (Main UART)

Please visit <http://www.ti.com> for more information.

Another example with a transistor circuit is shown below. For the design of circuits shown in dotted lines, see that shown in solid lines, but pay attention to the direction of the connection.

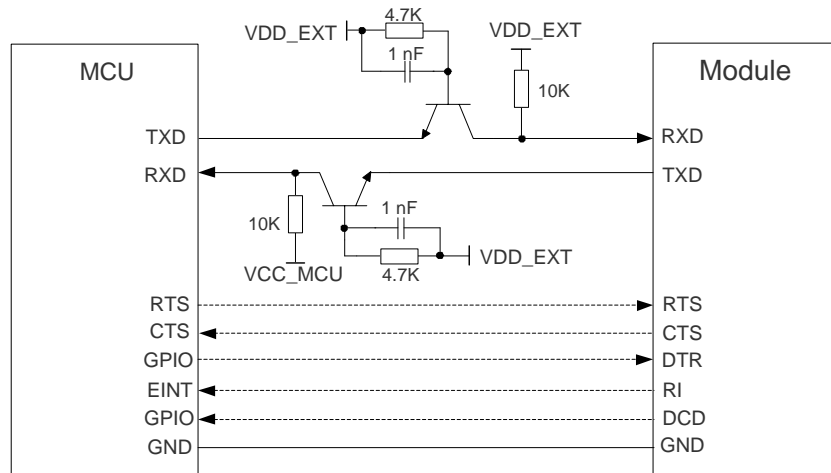


Figure 21: Reference Circuit with Transistor Circuit (Main UART)

NOTE

1. Transistor circuit solution is not suitable for applications with high baud rates over 460 kbps.
2. Please note that the module's CTS is connected to the MCU/Wi-Fi&Bluetooth module's CTS, and the module's RTS is connected to the MCU/Wi-Fi&Bluetooth module's RTS.
3. The level-shifting circuits (**Figure 20** and **Figure 21**) take the main UART as an example. The circuits of the debug UART and the Bluetooth UART are connected in the same way as the main UART, but the Bluetooth UART is connected to the Wi-Fi&Bluetooth module.

4.4. SPI

The module provides one SPI which only supports master mode with a maximum clock frequency up to 50 MHz.

Table 18: Pin Description of SPI

Pin Name	Pin No.	I/O	Description	Comment
SPI_MOSI	163	DO	SPI master output slave input	Master only.
SPI_CLK	164	DO	SPI clock	
SPI_MISO	165	DI	SPI master input slave output	
SPI_CS	166	DO	SPI chip select	

The following figure shows a reference design of PCM interface and SPI with an external SLIC IC. The dotted line in the figure below means an optional connection since some SLIC ICs need RST while some do not.

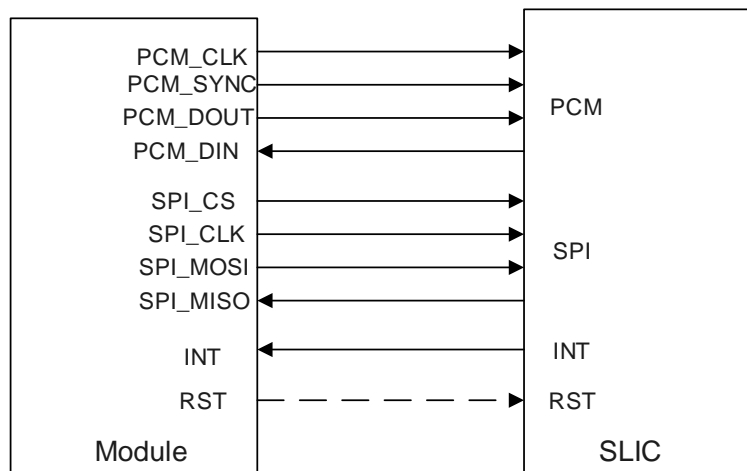


Figure 22: Reference Circuit of PCM and SPI Application with SLIC

4.5. PCM and I2C Interfaces

The module supports audio communication via PCM (Pulse Code Modulation) digital interface and I2C interfaces. The PCM interface supports the following modes:

- Primary mode (short frame synchronization): the module works as both master and slave.
- Auxiliary mode (long frame synchronization): the module works as master only.

In primary mode, the data is sampled on the falling edge of PCM_CLK and transmitted on the rising edge. The falling edge of PCM_SYNC represents the MSB. In this mode, the PCM interface supports 256 kHz, 512 kHz, 1024 kHz or 2048 kHz PCM_CLK when PCM_SYNC is 8 kHz, and the PCM interface supports 4096 kHz PCM_CLK when PCM_SYNC is 16 kHz.

In auxiliary mode, the data is sampled on the falling edge of the PCM_CLK and transmitted on the rising edge. The rising edge of PCM_SYNC represents the MSB. In this mode, the PCM interface operates with 256 kHz PCM_CLK and 8 kHz, 50 % duty cycle PCM_SYNC only.

The module supports 16-bit linear data format. The following figures show the primary mode's timing relationship with 8 kHz PCM_SYNC and 2048 kHz PCM_CLK, as well as the auxiliary mode's timing relationship with 8 kHz PCM_SYNC and 256 kHz PCM_CLK.

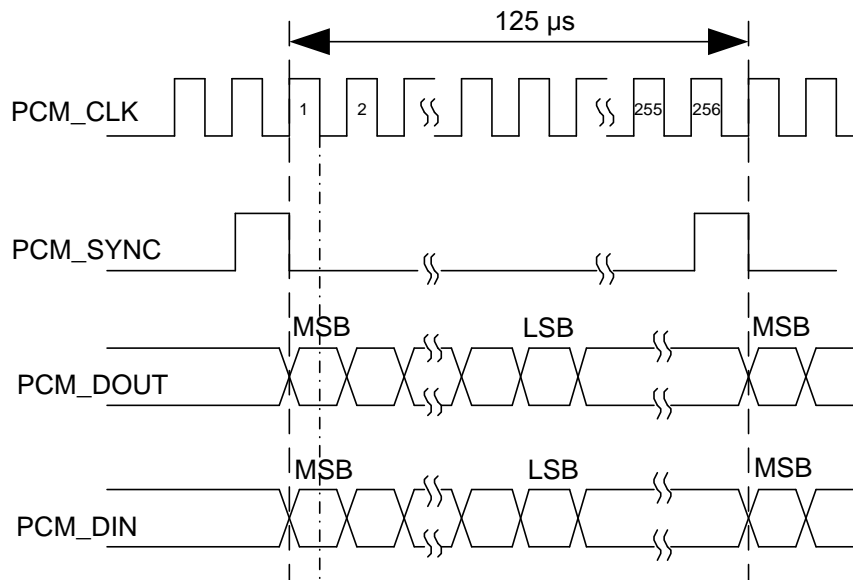


Figure 23: Primary Mode Timing

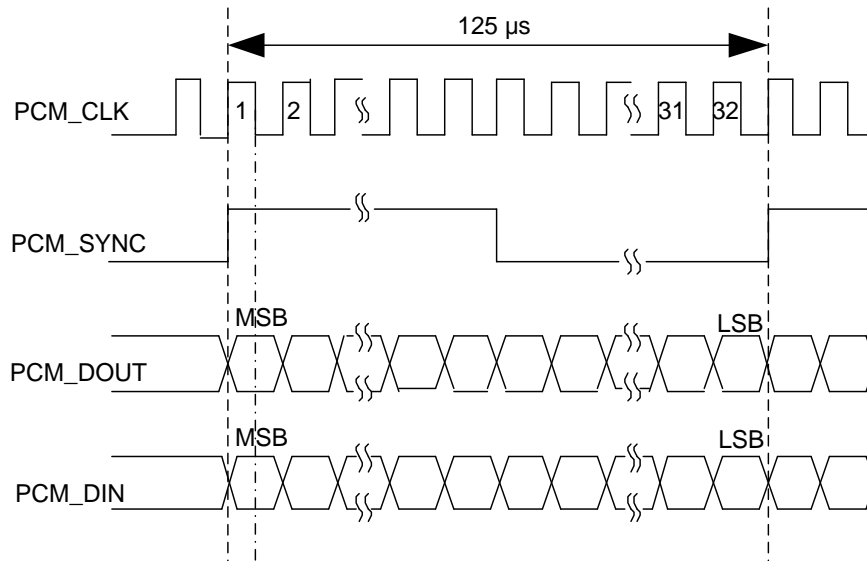


Figure 24: Auxiliary Mode Timing

The following table shows the pin definition of the PCM interface and I2C interface, both of which can be applied to audio codec design.

Table 19: Pin Description of PCM and I2C Interfaces

Pin Name	Pin No.	I/O	Description	Comment
PCM_DIN	66	DI	PCM data input	If unused, keep them open.
PCM_DOUT	68	DO	PCM data output	
PCM_SYNC	65	DIO	PCM data frame sync	Output signal in master mode. Input signal in slave mode.
PCM_CLK	67	DIO	PCM clock	If unused, keep them open.
I2C_SDA	42	OD	I2C serial data (for an external codec)	An external pull-up resistor is requisite. If unused, keep them open.
I2C_SCL	43	OD	I2C serial clock (for an external codec)	
I2S_MCLK	152	DO	Clock output for codec	Provide a digital clock output for an external audio codec. If unused, keep it open. Master only.

Clock and mode can be configured by **AT+QDAI**, and the default configuration is master mode using short frame synchronization format with 2048 kHz PCM_CLK and 8 kHz PCM_SYNC. See **document [3]** for details about the AT command.

The following figure shows a reference design of PCM and I2C interfaces with an external codec IC.

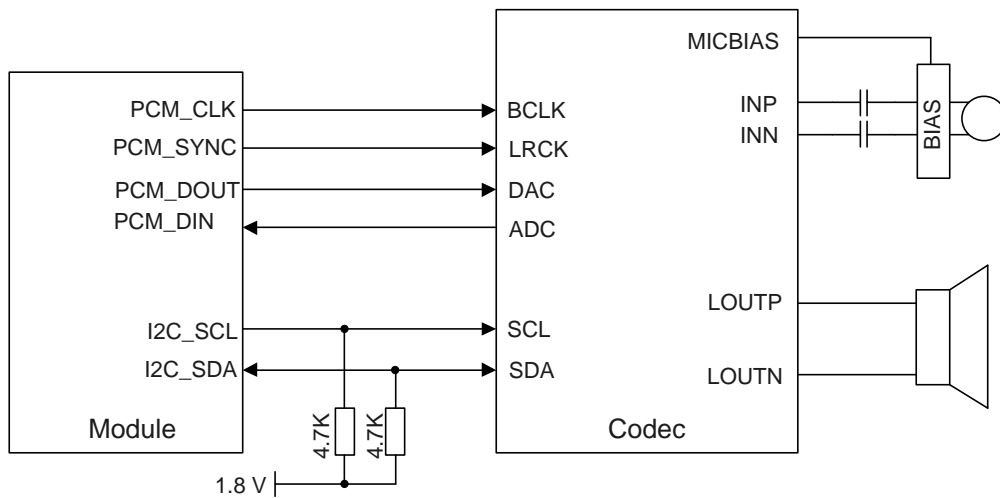


Figure 25: Reference Circuit of PCM and I2C Application with Audio Codec

NOTE

The module works as a master device pertaining to I2C interface.

4.6. ADC Interfaces

The module provides two ADC (Analog-to-Digital Converter) interfaces. Execute **AT+QADC=0** to read the voltage value on ADC0. Execute **AT+QADC=1** to read the voltage value on ADC1. See **document [3]** for details about these AT commands.

For higher accuracy of ADC, the trace of ADC should be surrounded by ground.

Table 20: Pin Description of the ADC Interface

Pin Name	I/O	Pin No.	Description	Comment
ADC0	AI	173	General-purpose ADC interface	0–1.875 V. If unused, keep them open.
ADC1	AI	175		

Table 21: Characteristics of ADC Interfaces

Parameter	Min.	Typ.	Max.	Unit
ADC0 Voltage Range	0	-	1.875	V
ADC1 Voltage Range	0	-	1.875	V
ADC Resolution	-	114.441	-	μV

NOTE

1. The input voltage of ADC should not exceed 1.875 V.
2. It is prohibited to supply any voltage to ADC pins without VBAT.
3. It is recommended to use a resistor divider circuit for ADC application.

4.7. Status Indication

4.7.1. Network Status Indication

The network indication pins NET_MODE and NET_STATUS can be used to drive network status indication LEDs. Their definitions and logic level change upon the switch of network mode/status, which is described in the following tables.

Table 22: Pin Description of NET_MODE and NET_STATUS

Pin Name	Pin No.	I/O	Description	Comment
NET_MODE	147	DO	Indicate the module's network registration mode	If unused, keep them open.
NET_STATUS	170	DO	Indicate the module's network activity status	

Table 23: Working Status of NET_MODE and NET_STATUS

Pin Name	Status	Description
NET_MODE	Always High	Registered on network
	Always Low	Others
NET_STATUS	Blink slowly (200 ms High/1800 ms Low)	Network searching
	Blink slowly (1800 ms High/200 ms Low)	Idle
	Blink quickly (125 ms High/125 ms Low)	Data transmission ongoing
	Always High	-

A reference circuit is shown in the following figure.

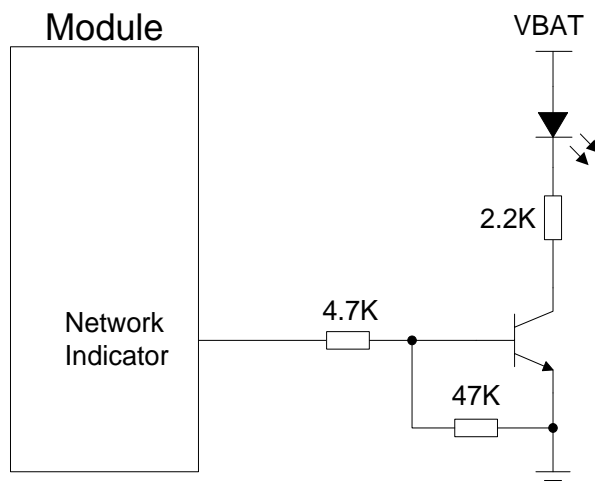


Figure 26: Reference Circuit of the Network Indicator

4.7.2. Module Status Indication

The STATUS pin is set as the module's status indicator. It outputs high-level voltage when the module is turned on.

Table 24: Pin Description of STATUS

Pin Name	Pin No.	I/O	Description	Comment
STATUS	171	DO	Indicate the module's operation status	If unused, keep it open.

A reference circuit is shown as below.

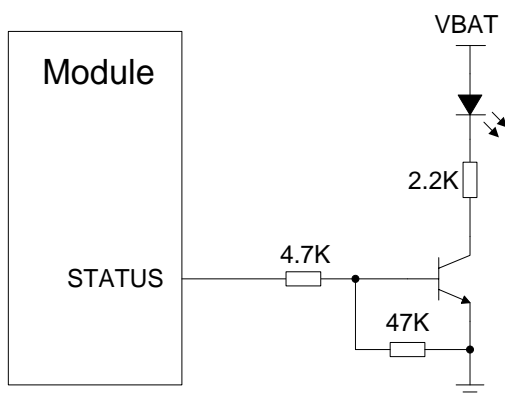


Figure 27: Reference Circuits of STATUS

4.8. RI

Execute **AT+QCFG="risignalttype","physical"** to configure MAIN_RI behavior. No matter on which port a URC is presented, the URC will trigger the behavior of MAIN_RI. The behavior of MAIN_RI can be altered by executing **AT+QCFG="urc/ri/ring"**. See **document [3]** for details about these AT commands.

In addition, MAIN_RI behavior can be configured flexibly. The default behavior of the MAIN_RI is shown as below.

Table 25: Default Behaviors of MAIN_RI

State	Response
Idle	MAIN_RI keeps at a high level.
URC	MAIN_RI outputs 120 ms low pulse when a new URC returns.

NOTE

The URC can be output from UART port, USB AT port (by default) and USB modem port by executing **AT+QURCCFG**. See **document [3]** for details about the AT command.

4.9. PCIe Interface

The module provides one integrated PCIe (Peripheral Component Interconnect Express) interface which can transmit data. The module supports PCIe Root Complex (RC) mode only.

- PCI Express Base Specification Revision 2.0 compliant
- Data rate up to 5 Gbps/lane
- Can be connected to an external Ethernet IC (MAC and PHY) or WLAN IC

Table 26: Pin Description of PCIe Interface

Pin Name	Pin No.	I/O	Description	Comment
PCIE_REFCLK_P	179	AO	PCIe reference clock (+)	
PCIE_REFCLK_M	180	AO	PCIe reference clock (-)	
PCIE_TX_M	182	AO	PCIe transmit (-)	Require differential impedance of 95 Ω . If unused, keep them open.
PCIE_TX_P	183	AO	PCIe transmit (+)	
PCIE_RX_M	185	AI	PCIe receive (-)	
PCIE_RX_P	186	AI	PCIe receive (+)	
PCIE_CLKREQ_N	188	DI	PCIe clock request	Input signal in master mode. If unused, keep it open.
PCIE_RC_RST_N	189	DO	PCIe RC reset	Output signal in master mode. If unused, keep it open.
PCIE_WAKE_N	190	DI	PCIe awake	Input signal, in master mode only. If unused, keep it open.

To enhance the reliability and availability in applications, follow the criteria below in the PCIe interface circuit design:

- Keep the PCIe data and control signals away from sensitive circuits and signals, such as RF, audio, and clock signals.
- Add a capacitor in series on Rx traces to prevent any DC bias.
- Keep the maximum trace length less than 300 mm.
- Keep the length matching of each differential data pair (Tx/Rx/REFCLK) less than 0.7 mm for PCIe routing traces.
- Keep the differential impedance of PCIe data trace as 85 $\Omega \pm 10\%$.
- Do not route PCIe data traces under components or cross them with other traces.

The module only supports Root Complex (RC) mode. In this mode, the module is configured to act as a PCIe RC device. The following figure shows a reference circuit of PCIe RC mode.

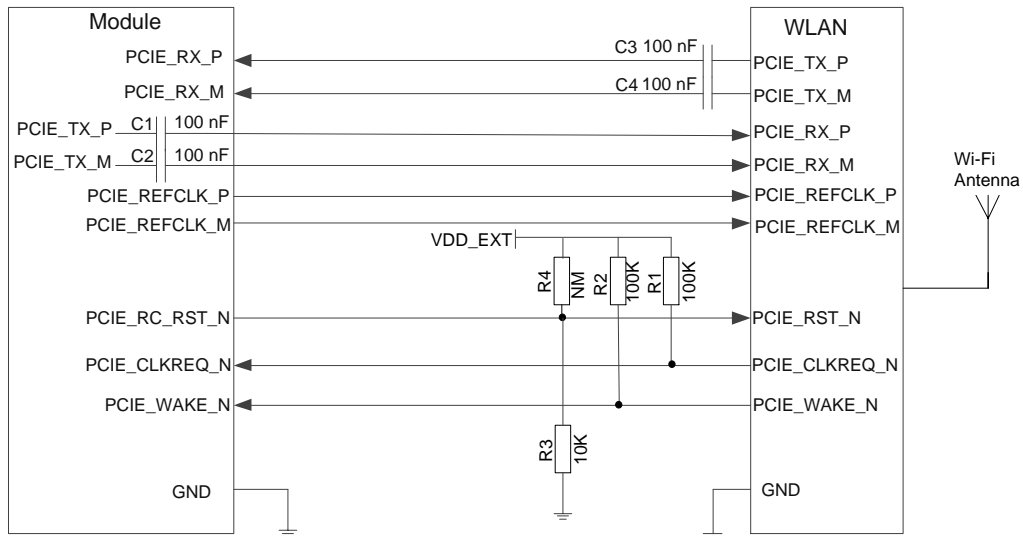


Figure 28: PCIe Interface Reference Circuit (RC Mode)

Table 27: PCIe Trace Length Inside the Module

Pin No.	Pin Name	Length (mm)	Length Difference (P-M) (mm)
179	PCIE_REFCLK_P	22.24	0.10
180	PCIE_REFCLK_M	22.14	
182	PCIE_TX_M	17.99	0.08
183	PCIE_TX_P	17.91	
185	PCIE_RX_M	13.91	0.07
186	PCIE_RX_P	13.98	

4.10. SDIO Interface

The module provides one SDIO interface which supports SD 3.0 protocol. The following table shows the pin definition.

Table 28: Pin Description of SDIO Interface

Pin Name	Pin No.	I/O	Description	Comment
VDD_P2	135	PI	Power input for SDIO interface	If a SD card is used, connect VDD_P2 to SDIO_VDD. If unused, connect VDD_P2 to VDD_EXT.
SDIO_VDD	46	PO	SD card application: SDIO pull up power source	Cannot work as SD card power supply. SD card must be powered by an external power supply.
SDIO_DATA3	48	DIO	SDIO data bit 3	If unused, keep them open.
SDIO_DATA2	47	DIO	SDIO data bit 2	
SDIO_DATA1	50	DIO	SDIO data bit 1	
SDIO_DATA0	49	DIO	SDIO data bit 0	
SDIO_CMD	51	DIO	SDIO command	
SDIO_DET	52	DI	SD card detect	
SDIO_CLK	53	DO	SDIO clock	

The following figure shows an SDIO interface reference design.

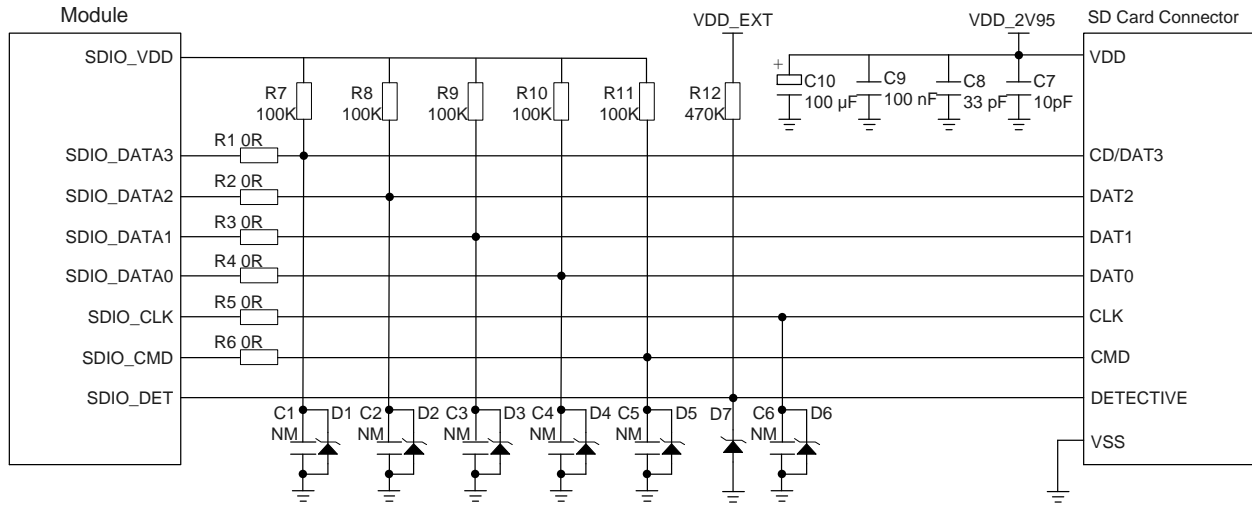


Figure 29: Reference Circuit of SD Card Application

Follow the principles below in the SD card circuit design:

- The voltage of SD power supply ranges from 2.7 V to 3.6 V and a sufficient current up to 0.8 A should be provided. As the maximum output current of SDIO_VDD is 50 mA which can only work as SDIO pull-up resistors, the SD card needs an external power supply.
- To avoid the jitter, resistors R7 to R11 are needed to pull up the SDIO signals to SDIO_VDD. The values of these resistors range from 10 kΩ to 100 kΩ and the preferred value is 100 kΩ.
- To improve signal quality, it is recommended to add resistors R1 to R6 of 0 Ω in series between the module and the SD card connector. The bypass capacitors C1 to C6 are reserved and not mounted by default. All resistors and bypass capacitors should be placed close to the module.
- For better ESD protection, it is recommended to add a TVS array on each SD signal trace.
- It is important to route the SDIO signal traces with ground. The impedance of SDIO data trace is 50 Ω (± 10 %).
- Keep SDIO signals far away from other sensitive circuits/signals such as RF circuits, and analog signals, as well as noise signals such as clock signals and DC-DC signals.
- It is recommended to keep the trace length difference between SDIO_CLK and SDIO_DATA/SDIO_CMD within 1 mm and the total routing length less than 50 mm. The trace inside the module is 25 mm long in total, so the exterior trace should be less than 25 mm in total.
- Make sure the adjacent trace spacing is twice the trace width and the load capacitance of SDIO bus should be less than 15 pF.

4.11. Antenna Tuner Control Interfaces*

The module supports external antenna tuner control through the RFFE interface. The following is the pin definition of the RFFE interfaces.

Table 29: Pin Description of RFFE Interfaces

Pin Name	Pin No.	I/O	Description	Comment
RFFE_CLK	71	DO	Used for external MIPI IC control	If unused, keep them open.
RFFE_DATA	73	DIO	Used for external MIPI IC control	

4.12. USB_BOOT Interface

The module provides one USB_BOOT pin. Pull up USB_BOOT to VDD_EXT before turning on the module, then the module will enter emergency download mode when turned on. In this mode, the module supports firmware upgrade over USB 2.0 interface.

Table 30: Pin Description of USB_BOOT Interface

Pin Name	Pin No.	I/O	Description	Comment
USB_BOOT	140	DI	Force the module into download mode	Active high. A test point is recommended to be reserved.

The following figure shows a reference circuit of USB_BOOT.

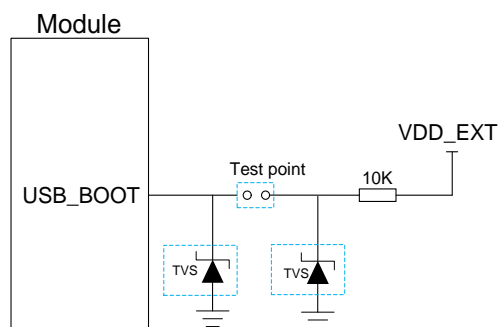


Figure 30: Reference Circuit of USB_BOOT

5 RF Specifications

The module provides one main antenna interface, one Rx-diversity antenna interface, and one GNSS antenna interface. The impedance of antenna port is 50 Ω .

Appropriate antenna type and design should be used with matched antenna parameters according to specific application. It is required to perform a comprehensive functional test for the RF design before mass production of terminal products. The entire content of this chapter is provided for illustration only. Analysis, evaluation and determination are still necessary when designing target products.

5.1. Cellular Network

5.1.1. Antenna Interface & Frequency Bands

The pin definition of main antenna interface and Rx-diversity antenna interface are shown as below.

Table 31: Pin Description of the Main/Rx-diversity Antenna Interfaces

Pin Name	Pin No.	I/O	Description	Comment
ANT0	107	AIO	Main antenna interface	50 Ω impedance
ANT1	127	AI	Rx-diversity antenna interface	

Table 32: Frequency Bands

3GPP Band	Transmit	Receive	Unit
WCDMA B1	1920–1980	2110–2170	MHz
WCDMA B2	1850–1910	1930–1990	MHz
WCDMA B3	1710–1785	1805–1880	MHz
WCDMA B4	1710–1755	2110–2155	MHz

WCDMA B5	824–849	869–894	MHz
WCDMA B8	880–915	925–960	MHz
LTE B1	1920–1980	2110–2170	MHz
LTE B2	1850–1910	1930–1990	MHz
LTE B3	1710–1785	1805–1880	MHz
LTE B4	1710–1755	2110–2155	MHz
LTE B5	824–849	869–894	MHz
LTE B7	2500–2570	2620–2690	MHz
LTE B8	880–915	925–960	MHz
LTE B12	699–716	729–746	MHz
LTE B13	777–787	746–756	MHz
LTE B14	788–798	758–768	MHz
LTE B20	832–862	791–821	MHz
LTE B25	1850–1915	1930–1995	MHz
LTE B26	814–849	859–894	MHz
LTE B28	703–748	758–803	MHz
LTE B29	-	717–728	MHz
LTE B30	2305–2315	2350–2360	MHz
LTE B32	-	1452–1496	MHz
LTE B38	2570–2620	2570–2620	MHz
LTE B40	2300–2400	2300–2400	MHz
LTE B41	2496–2690	2496–2690	MHz
LTE B48	3550–3700	3550–3700	MHz
LTE B66	1710–1780	2110–2200	MHz
LTE B71	663–698	617–652	MHz

5.1.2. Tx Power

Table 33: Tx Power

Frequency Band	Max. RF Output Power	Min. RF Output Power
WCDMA bands	23 dBm \pm 2 dB	< -50 dBm
LTE bands	23 dBm \pm 2 dB	< -40 dBm

5.1.3. Rx Sensitivity

Table 34: EG060K-EA Dual-Antenna Conducted RF Rx Sensitivity

Frequency Band	Primary	Diversity	SIMO ⁶	3GPP (SIMO)	Unit
WCDMA B1	TBD	TBD	TBD	-106.7	dBm
WCDMA B3	TBD	TBD	TBD	-103.7	dBm
WCDMA B5	TBD	TBD	TBD	-104.7	dBm
WCDMA B8	TBD	TBD	TBD	-103.7	dBm
LTE-FDD B1 (10 MHz)	TBD	TBD	TBD	-96.3	dBm
LTE-FDD B3 (10 MHz)	TBD	TBD	TBD	-93.3	dBm
LTE-FDD B5 (10 MHz)	TBD	TBD	TBD	-94.3	dBm
LTE-FDD B7 (10 MHz)	TBD	TBD	TBD	-94.3	dBm
LTE-FDD B8 (10 MHz)	TBD	TBD	TBD	-93.3	dBm
LTE-FDD B20 (10 MHz)	TBD	TBD	TBD	-93.3	dBm
LTE-FDD B28 (10 MHz)	TBD	TBD	TBD	-94.8	dBm
LTE-FDD B32 (10 MHz) ⁷	TBD	TBD	TBD	-96.3	dBm
LTE-TDD B38 (10 MHz)	TBD	TBD	TBD	-96.3	dBm
LTE-TDD B40 (10 MHz)	TBD	TBD	TBD	-96.3	dBm
LTE-TDD B41 (10 MHz)	TBD	TBD	TBD	-94.3	dBm

⁶ SIMO is a smart antenna technology that uses a single antenna at the transmitter side and multiple (Primary + Diversity) antennas at the receiver side, which can improve Rx performance.

⁷ The test results are based on CA_20A-32A.

Table 35: EG060K-NA Dual-Antenna Conducted RF Rx Sensitivity

Frequency Band	Primary	Diversity	SIMO ⁶	3GPP (SIMO)	Unit
LTE-FDD B2 (10 MHz)	TBD	TBD	TBD	-94.3	dBm
LTE-FDD B4 (10 MHz)	TBD	TBD	TBD	-96.3	dBm
LTE-FDD B5 (10 MHz)	TBD	TBD	TBD	-94.3	dBm
LTE-FDD B7 (10 MHz)	TBD	TBD	TBD	-94.3	dBm
LTE-FDD B12 (10 MHz)	TBD	TBD	TBD	-93.3	dBm
LTE-FDD B13 (10 MHz)	TBD	TBD	TBD	-93.3	dBm
LTE-FDD B14 (10 MHz)	TBD	TBD	TBD	-93.3	dBm
LTE-FDD B25 (10 MHz)	TBD	TBD	TBD	-92.8	dBm
LTE-FDD B26 (10 MHz)	TBD	TBD	TBD	-93.8	dBm
LTE-FDD B29 (10 MHz) ⁸	TBD	TBD	TBD	-93.3	dBm
LTE-FDD B30 (10 MHz)	TBD	TBD	TBD	-95.3	dBm
LTE-FDD B66 (10 MHz)	TBD	TBD	TBD	-95.8	dBm
LTE-FDD B71 (10 MHz)	TBD	TBD	TBD	-94.3	dBm
LTE-TDD B41 (10 MHz)	TBD	TBD	TBD	-94.3	dBm
LTE-TDD B48 (10 MHz)	TBD	TBD	TBD	-95	dBm

⁸ The test results are based on CA_2A-29A.

Table 36: EG060K-LA Dual-Antenna Conducted RF Rx Sensitivity

Frequency Band	Primary	Diversity	SIMO ⁶	3GPP (SIMO)	Unit
WCDMA B2	TBD	TBD	TBD	-104.7	dBm
WCDMA B4	TBD	TBD	TBD	-106.7	dBm
WCDMA B5	TBD	TBD	TBD	-104.7	dBm
WCDMA B8	TBD	TBD	TBD	-103.7	dBm
LTE-FDD B2 (10 MHz)	TBD	TBD	TBD	-94.3	dBm
LTE-FDD B4 (10 MHz)	TBD	TBD	TBD	-96.3	dBm
LTE-FDD B5 (10 MHz)	TBD	TBD	TBD	-94.3	dBm
LTE-FDD B7 (10 MHz)	TBD	TBD	TBD	-94.3	dBm
LTE-FDD B8 (10 MHz)	TBD	TBD	TBD	-93.3	dBm
LTE-FDD B25 (10 MHz)	TBD	TBD	TBD	-92.8	dBm
LTE-FDD B28 (10 MHz)	TBD	TBD	TBD	-94.8	dBm
LTE-FDD B66 (10 MHz)	TBD	TBD	TBD	-96.5	dBm
LTE-TDD B42 (10 MHz)	TBD	TBD	TBD	-95	dBm
LTE-TDD B43 (10 MHz)	TBD	TBD	TBD	-95	dBm

5.1.4. Reference Design

A reference design of ANT0, ANT1 interfaces is shown as below. It requires a π -type matching circuit for better RF performance. The π -type matching components (R1/C1/C2, R2/C3/C4,) should be placed as close to the antennas as possible and are mounted according to the actual debugging. C1 to C4 are not mounted and a 0 Ω resistor is mounted on R1 to R2 respectively by default.

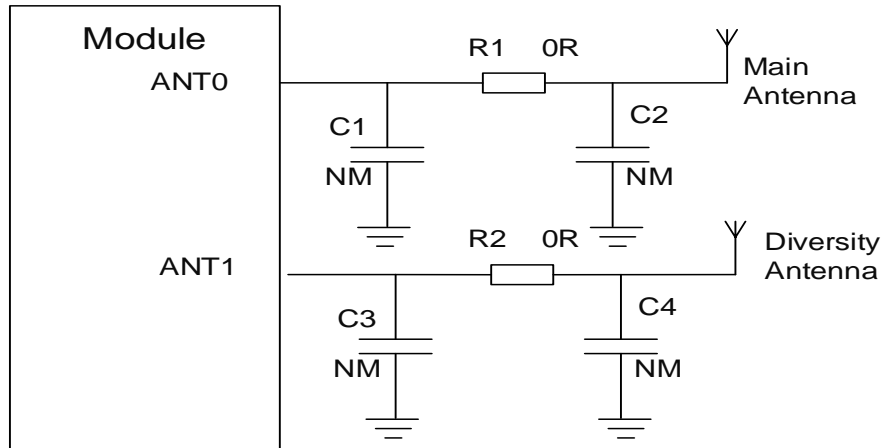


Figure 31: Reference Circuit of RF Antenna Interfaces

NOTE

Keep a proper distance between the main antenna and the Rx-diversity antenna to improve the receiving sensitivity.

5.2. GNSS

5.2.1. Antenna Interface & Frequency Bands

The module includes a fully integrated global navigation satellite system solution that supports GPS, GLONASS, BDS, and Galileo. The module supports standard NMEA 0183 protocol, and outputs NMEA sentences at 1 Hz data update rate via USB interface by default.

By default, the module GNSS engine is off. It must be switched on via AT command. For more details, see [document \[3\]](#).

Table 37: Pin Description of GNSS Antenna Interface

Pin Name	Pin No.	I/O	Description	Comment
ANT_GNSS	119	AI	GNSS antenna interface	50 Ω impedance. If unused, keep it open.

Table 38: GNSS Frequency

Type	Frequency	Unit
GPS	1575.42 \pm 1.023	MHz
GLONASS	1597.5–1605.8	MHz
Galileo	1575.42 \pm 2.046	MHz
BDS	1561.098 \pm 2.046	MHz

5.2.2. GNSS Performance

Table 39: GNSS Performance

Parameter	Description	Condition	Typ.	Unit
Sensitivity	Acquisition	Autonomous	TBD	dBm
	Reacquisition	Autonomous	TBD	dBm
	Tracking	Autonomous	TBD	dBm
TTFF	Cold start @ open sky	Autonomous	TBD	s
		XTRA start	TBD	s
	Warm start @ open sky	Autonomous	TBD	s
		XTRA start	TBD	s
	Hot start @ open sky	Autonomous	TBD	s
		XTRA start	TBD	s
Accuracy	CEP-50	Autonomous @ open sky	TBD	m

NOTE

1. Tracking sensitivity: the minimum GNSS signal power at which the module can maintain lock (keep positioning for at least 3 minutes continuously).
2. Reacquisition sensitivity: the minimum GNSS signal power required for the module to maintain lock within 3 minutes after loss of lock.
3. Acquisition sensitivity: the minimum GNSS signal power at which the module can fix position successfully within 3 minutes after executing cold start command.

5.2.3. Passive Antenna Reference Design

GNSS Antenna interface supports passive ceramic antenna or other types of passive antennas. The reference design of GNSS passive antenna is shown as below.

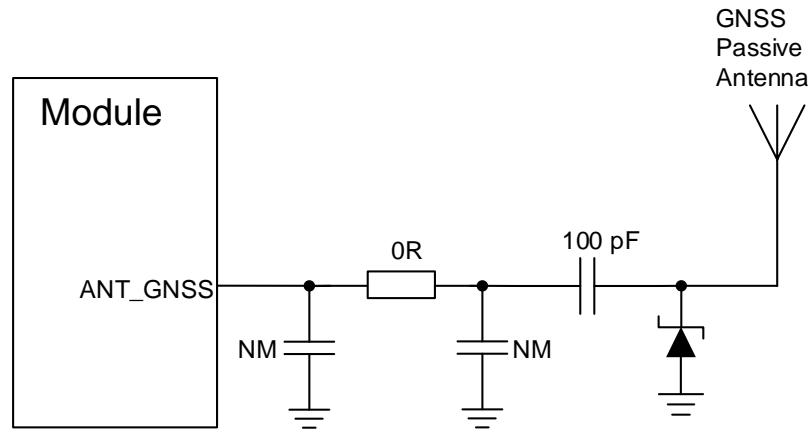


Figure 32: Reference Circuit of GNSS Passive Antenna Interface

NOTE

1. An external LDO can be used to supply power according to the active antenna requirements.
2. The VDD circuit is unnecessary if the module is equipped with a passive antenna.
3. It is not recommended to add an external LNA when using a passive GNSS antenna.

5.2.4. Active Antenna Reference Design

GNSS Antenna interface also supports active antenna. In any case, it is recommended to use a passive antenna. However, If an active antenna is needed in your application, it is recommended to reserve a π -type attenuation circuit and use a high-performance LDO in the power system design. The reference design of GNSS active antenna is shown as below.

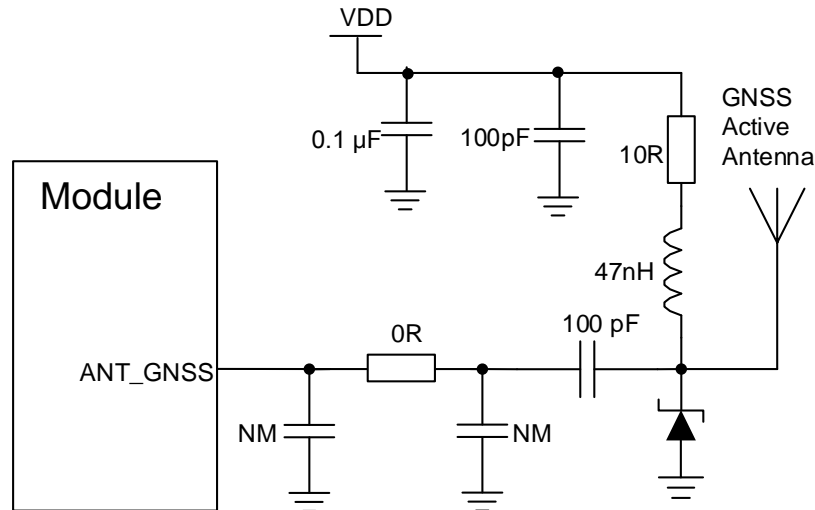


Figure 33: Reference Circuit of GNSS Active Antenna Interface

NOTE

It is recommended to use a passive GNSS antenna when LTE B13 or B14 is supported, as the use of active antenna may generate harmonics which will affect the GNSS performance.

5.3. RF Routing Guidelines

For the PCB, control the characteristic impedance of all RF traces to $50\ \Omega$. The impedance of the RF traces is usually determined by the trace width (W), the materials' dielectric constant, the height from the reference ground to the signal layer (H), and the spacing between RF traces and grounds (S). Microstrip or coplanar waveguide is typically used in RF layout to control characteristic impedance. The following are reference designs of microstrip or coplanar waveguide with different PCB structures.

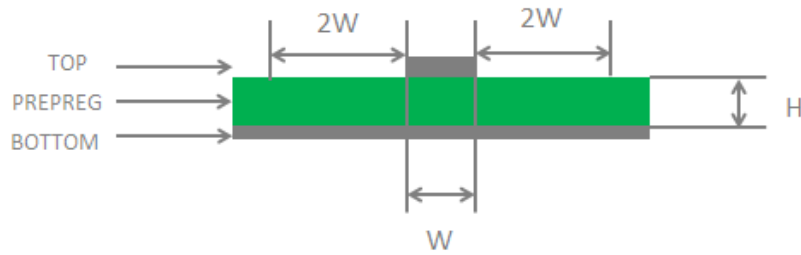


Figure 34: Microstrip Line Design on a 2-layer PCB

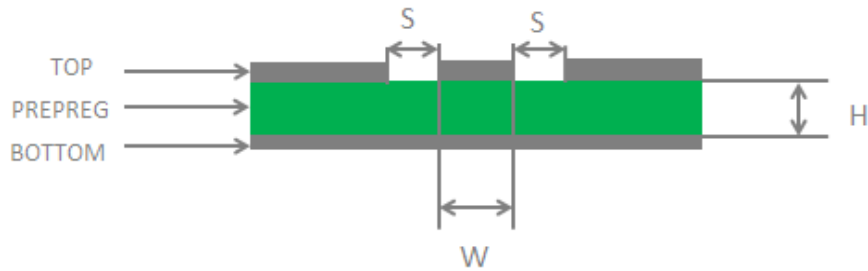


Figure 35: Coplanar Waveguide Line Design on a 2-layer PCB

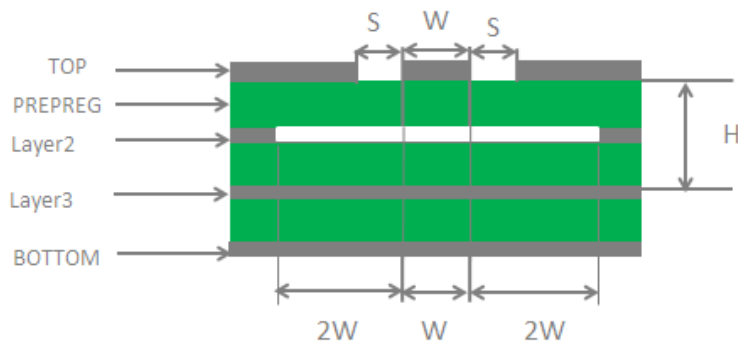


Figure 36: Coplanar Waveguide Line Design on a 4-layer PCB (Layer 3 as Reference Ground)

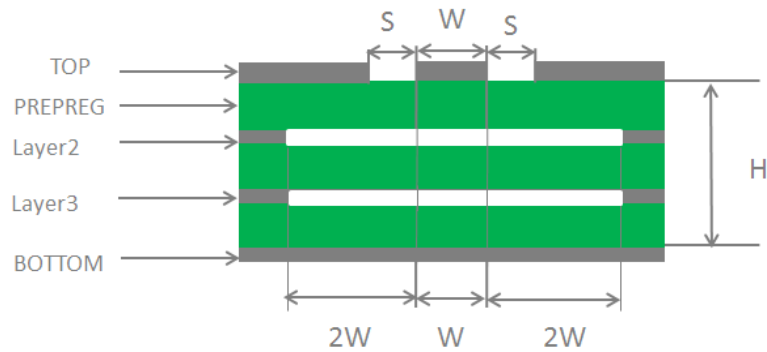


Figure 37: Coplanar Waveguide Line Design on a 4-layer PCB (Layer 4 as Reference Ground)

To ensure RF performance and reliability, follow the principles below in RF layout design:

- Use an impedance simulation tool to accurately control the characteristic impedance of RF traces to 50 Ω .
- The GND pins adjacent to RF pins should not be designed as thermal relief pads, and should be fully connected to ground.
- The distance between the RF pins and the RF connector should be as short as possible and all the right-angle traces should be changed to curved ones. The recommended trace angle is 135°.
- Reserve clearance under the signal pin of the antenna connector or solder joint.
- The reference ground of RF traces should be complete. Meanwhile, adding some ground vias around RF traces and the reference ground could help to improve RF performance. The distance between the ground vias and RF traces should be at least twice of the width of RF signal traces ($2 \times W$).
- Keep RF traces away from interference sources, and avoid intersection and paralleling between traces on adjacent layers.

For more details about RF layout, see **document [4]**.

5.4. Antenna Design Requirements

The following table shows the requirements on main antenna, Rx-diversity antenna and GNSS antenna.

Table 40: Antenna Design Requirements

Antenna Type	Requirements
GNSS	<ul style="list-style-type: none"> ● Frequency range: 1559–1609 MHz ● Polarization: RHCP or linear ● VSWR: ≤ 2 (Typ.)
	For passive antenna usage: Passive antenna gain: > 0 dBi
	For active antenna usage: Active antenna noise figure: < 1.5 dB
Cellular	<ul style="list-style-type: none"> ● VSWR: ≤ 2 ● Efficiency: $> 30\%$ ● Max input power: 50 W ● Input impedance: $50\ \Omega$ ● Cable insertion loss: <ul style="list-style-type: none"> – < 1 dB: LB (< 1 GHz) – < 1.5 dB: MB (1–2.3 GHz) – < 2 dB: HB (> 2.3 GHz)

NOTE

It is recommended to use a passive GNSS antenna when LTE B13 or B14 is supported, as the use of active antenna may generate harmonics which will affect the GNSS performance.

5.5. RF Connector Recommendation

If RF connector is used for antenna connection, it is recommended to use the U.FL-R-SMT connector provided by Hirose.

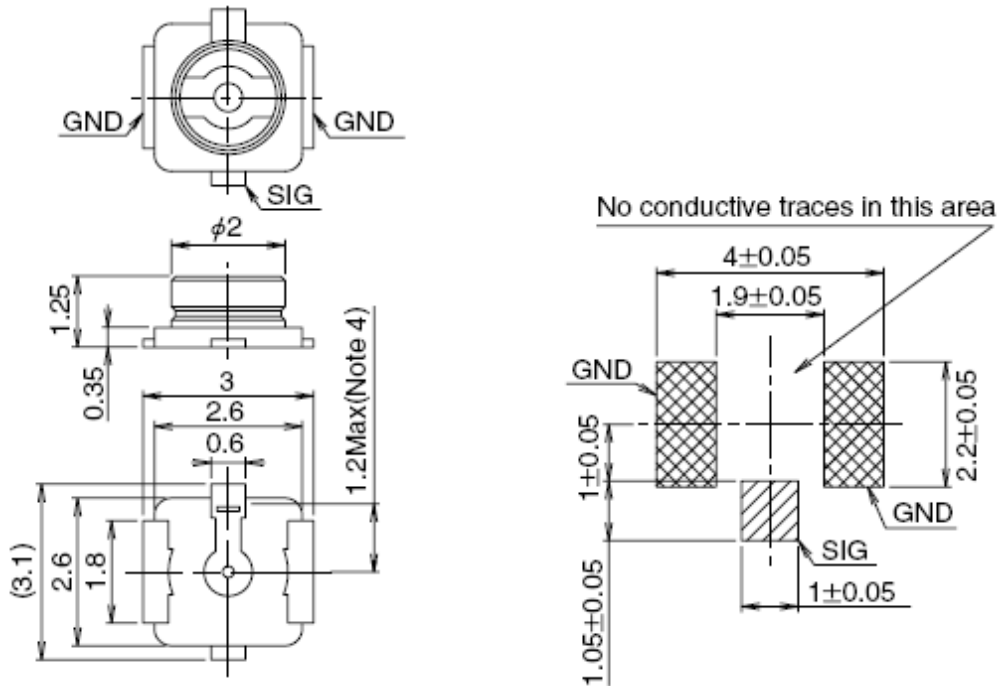


Figure 38: Dimensions of the Receptacle (Unit: mm)

U.FL-LP series mated plugs listed in the following figure can be used to match the U.FL-R-SMT.

Part No.	U.FL-LP-040	U.FL-LP-066	U.FL-LP(V)-040	U.FL-LP-062	U.FL-LP-088
Mated Height	2.5mm Max. (2.4mm Nom.)	2.5mm Max. (2.4mm Nom.)	2.0mm Max. (1.9mm Nom.)	2.4mm Max. (2.3mm Nom.)	2.4mm Max. (2.3mm Nom.)
Applicable cable	Dia. 0.81mm Coaxial cable	Dia. 1.13mm and Dia. 1.32mm Coaxial cable	Dia. 0.81mm Coaxial cable	Dia. 1mm Coaxial cable	Dia. 1.37mm Coaxial cable
Weight (mg)	53.7	59.1	34.8	45.5	71.7
RoHS	YES				

Figure 39: Specifications of Mated Plugs

The following figure describes the space factor of mated plugs.

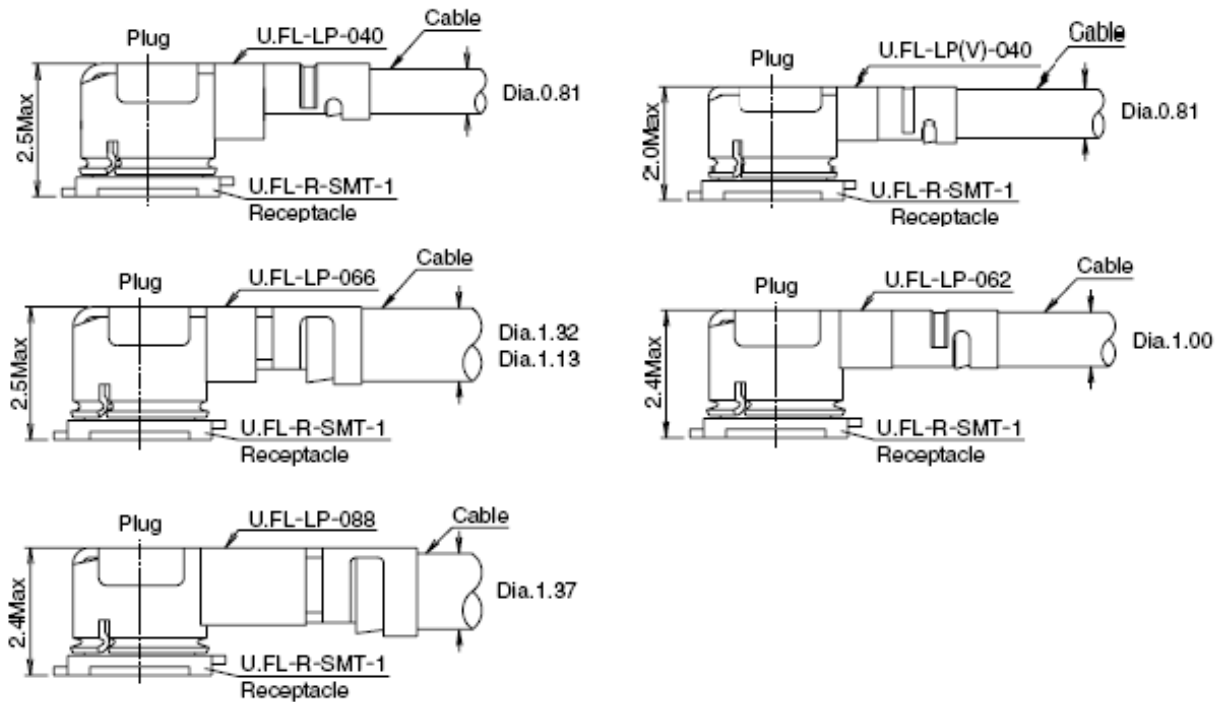


Figure 40: Space Factor of Mated Connectors (Unit: mm)

For more details, please visit <http://www.hirose.com>.

6 Electrical Characteristics and Reliability

6.1. Absolute Maximum Ratings

Absolute maximum ratings for power supply and voltage on digital and analog pins of the module are listed in the following table.

Table 41: Absolute Maximum Ratings

Parameter	Min.	Max.	Unit
VBAT_RF/VBAT_BB	-0.3	6.0	V
USB_VBUS	-0.3	5.5	V
Peak Current of VBAT_BB	-	1.0	A
Peak Current of VBAT_RF	-	1.2	A
Voltage at Digital Pins	-0.3	2.3	V
Voltage at ADC	-0.5	2.3	V

6.2. Power Supply Ratings

Table 42: Power Supply Ratings

Parameter	Description	Condition	Min.	Typ.	Max.	Unit
VBAT	VBAT_BB and VBAT_RF	The actual input voltages must be kept between the minimum and maximum values.	3.3	3.8	4.4	V
USB_VBUS	USB connection detection	-	3.3	5.0	5.25	V

6.3. Power Consumption

Table 43: EG060K-EA Power Consumption

Description	Condition	Typ.	Unit
OFF state	Power down	TBD	μA
Sleep state	AT+CFUN=0 (USB disconnected)	TBD	mA
	WCDMA PF = 64 (USB disconnected)	TBD	mA
	WCDMA PF = 128 (USB disconnected)	TBD	mA
	WCDMA PF = 512 (USB disconnected)	TBD	mA
	LTE-FDD PF = 32 (USB disconnected)	TBD	mA
	LTE-FDD PF = 64 (USB disconnected)	TBD	mA
	LTE-FDD PF = 128 (USB disconnected)	TBD	mA
	LTE-TDD PF = 32 (USB disconnected)	TBD	mA
	LTE-TDD PF = 64 (USB disconnected)	TBD	mA
	LTE-TDD PF = 128 (USB disconnected)	TBD	mA
Idle state	WCDMA PF = 64 (USB disconnected)	TBD	mA
	WCDMA PF = 64 (USB 2.0 connected)	TBD	mA

	LTE-FDD PF = 64 (USB disconnected)	TBD	mA
	LTE-FDD PF = 64 (USB 2.0 connected)	TBD	mA
	LTE-TDD PF = 64 (USB disconnected)	TBD	mA
	LTE-TDD PF = 64 (USB 2.0 connected)	TBD	mA
WCDMA data transmission (GNSS OFF)	WCDMA B1 HSDPA CH10700 @ 22.22 dBm	TBD	mA
	WCDMA B1 HSUPA CH10700 @ 21.34 dBm	TBD	mA
	WCDMA B3 HSDPA CH1338 @ 22.31 dBm	TBD	mA
	WCDMA B3 HSUPA CH1338 @ 21.53 dBm	TBD	mA
	WCDMA B5 HSDPA CH4407 @ 22.29 dBm	TBD	mA
	WCDMA B5 HSUPA CH4407 @ 21.49 dBm	TBD	mA
	WCDMA B8 HSDPA CH3012 @ 22.27 dBm	TBD	mA
	WCDMA B8 HSUPA CH3012 @ 21.62 dBm	TBD	mA
LTE data transmission (GNSS OFF)	LTE-FDD B1 CH300 @ 22.81 dBm	TBD	mA
	LTE-FDD B3 CH1575 @ 23.42 dBm	TBD	mA
	LTE-FDD B5 CH2525 @ 22.94 dBm	TBD	mA
	LTE-FDD B7 CH3100 @ 23.18 dBm	TBD	mA
	LTE-FDD B8 CH3625 @ 22.91 dBm	TBD	mA
	LTE-FDD B20 CH6300 @ 22.95 dBm	TBD	mA
	LTE-FDD B28 CH27460 @ 22.93 dBm	TBD	mA
	LTE-TDD B38 CH38000 @ 23.21 dBm	TBD	mA
	LTE-TDD B40 CH39150 @ 23.14 dBm	TBD	mA
	LTE-TDD B41 CH40740 @ 23.06 dBm	TBD	mA
WCDMA	WCDMA B1 CH10700 @ 23.12 dBm	TBD	mA
	WCDMA B3 CH1338 @ 23.17 dBm	TBD	mA
	WCDMA B5 CH4407 @ 23.24 dBm	TBD	mA
	WCDMA B8 CH3012 @ 23.23 dBm	TBD	mA

Table 44: EG060K-NA Power Consumption

Description	Condition	Typ.	Unit
OFF state	Power down	TBD	μA
Sleep state	AT+CFUN=0 (USB disconnected)	TBD	mA
	LTE-FDD PF = 32 (USB disconnected)	TBD	mA
	LTE-FDD PF = 64 (USB disconnected)	TBD	mA
	LTE-FDD PF = 128 (USB disconnected)	TBD	mA
	LTE-FDD PF = 256 (USB disconnected)	TBD	mA
	LTE-TDD PF = 32 (USB disconnected)	TBD	mA
	LTE-TDD PF = 64 (USB disconnected)	TBD	mA
	LTE-TDD PF = 128 (USB disconnected)	TBD	mA
	LTE-TDD PF = 256 (USB disconnected)	TBD	mA
	LTE-FDD PF = 64 (USB disconnected)	TBD	mA
Idle state	LTE-FDD PF = 64 (USB 2.0 connected)	TBD	mA
	LTE-TDD PF = 64 (USB disconnected)	TBD	mA
	LTE-TDD PF = 64 (USB 2.0 connected)	TBD	mA
	LTE-FDD B2 CH1100 @ 22.82 dBm	TBD	mA
LTE data transmission (GNSS OFF)	LTE-FDD B4 CH2050 @ 22.74 dBm	TBD	mA
	LTE-FDD B5 CH2525 @ 23.0 dBm	TBD	mA
	LTE-FDD B7 CH3100 @ 22.61 dBm	TBD	mA
	LTE-FDD B12 CH5095 @ 22.95 dBm	TBD	mA
	LTE-FDD B13 CH5230 @ 22.84 dBm	TBD	mA
	LTE-FDD B14 CH5330 @ 22.97 dBm	TBD	mA
	LTE-FDD B25 CH8590 @ 22.83 dBm	TBD	mA
	LTE-FDD B26 CH8765 @ 22.94 dBm	TBD	mA

	LTE-FDD B30 CH9820 @ 22.5 dBm	TBD	mA
	LTE-TDD B41 CH40620 @ 22.75 dBm	TBD	mA
	LTE-TDD B48 CH55340 @ 22.67 dBm	TBD	mA
	LTE-FDD B66 CH66536 @ 23.07 dBm	TBD	mA
	LTE-FDD B71 CH68686 @ 22.94 dBm	TBD	mA

Table 45: EG060K-LA Power Consumption

Description	Condition	Typ.	Unit
OFF state	Power down	TBD	μA
Sleep state	AT+CFUN=0 (USB disconnected)	TBD	mA
	WCDMA PF = 64 (USB disconnected)	TBD	mA
	WCDMA PF = 128 (USB disconnected)	TBD	mA
	WCDMA PF = 512 (USB disconnected)	TBD	mA
	LTE-FDD PF = 32 (USB disconnected)	TBD	mA
	LTE-FDD PF = 64 (USB disconnected)	TBD	mA
	LTE-FDD PF = 128 (USB disconnected)	TBD	mA
	LTE-TDD PF = 32 (USB disconnected)	TBD	mA
	LTE-TDD PF = 64 (USB disconnected)	TBD	mA
	LTE-TDD PF = 128 (USB disconnected)	TBD	mA
	WCDMA PF = 64 (USB disconnected)	TBD	mA
Idle state	WCDMA PF = 64 (USB 2.0 connected)	TBD	mA
	LTE-FDD PF = 64 (USB disconnected)	TBD	mA
	LTE-FDD PF = 64 (USB 2.0 connected)	TBD	mA
	LTE-TDD PF = 64 (USB disconnected)	TBD	mA
	LTE-TDD PF = 64 (USB 2.0 connected)	TBD	mA
	WCDMA B2 HSDPA CH9537 @ 22.1 dBm	TBD	mA
WCDMA data transmission (GNSS OFF)	WCDMA B2 HSUPA CH9263 @ 21.38 dBm	TBD	mA
	WCDMA B4 HSDPA CH1313 @ 22.12 dBm	TBD	mA
	WCDMA B4 HSUPA CH1313 @ 20.34 dBm	TBD	mA
	WCDMA B5 HSDPA CH4232 @ 22.33 dBm	TBD	mA

LTE data transmission (GNSS OFF)	WCDMA B5 HSUPA CH4232 @ 22.58 dBm	TBD	mA
	WCDMA B8 HSDPA CH2862 @ 22.44 dBm	TBD	mA
	WCDMA B8 HSUPA CH2862 @ 22 dBm	TBD	mA
	LTE-FDD B2 CH900 @ 22.88 dBm	TBD	mA
	LTE-FDD B4 CH2175 @ 22.79 dBm	TBD	mA
	LTE-FDD B5 CH2525 @ 23.07 dBm	TBD	mA
	LTE-FDD B7 CH3100 @ 22.43 dBm	TBD	mA
	LTE-FDD B8 CH3625 @ 22.76 dBm	TBD	mA
	LTE-FDD B25 CH8365 @ 22.91 dBm	TBD	mA
	LTE-FDD B28 CH27460 @ 23.11 dBm	TBD	mA
	LTE-TDD B66 CH66786 @ 22.91 dBm	TBD	mA
	LTE-TDD B42 CH42590 @ 22.46 dBm	TBD	mA
WCDMA	LTE-TDD B43 CH44590 @ 22.8 dBm	TBD	mA
	WCDMA B2 CH9537 @ 23.15 dBm	TBD	mA
	WCDMA B4 CH1313 @ 23.22 dBm	TBD	mA
	WCDMA B5 CH4232 @ 23.31 dBm	TBD	mA
	WCDMA B8 CH2862 @ 23.36 dBm	TBD	mA

6.4. Digital I/O Characteristics

Table 46: 1.8 V I/O Requirements

Parameter	Description	Min.	Max.	Unit
V _{IH}	High-level input voltage	0.7 × VDD_EXT	VDD_EXT + 0.3	V
V _{IL}	Low-level input voltage	-0.3	0.3 × VDD_EXT	V
V _{OH}	High-level output voltage	VDD_EXT - 0.45	VDD_EXT	V
V _{OL}	Low-level output voltage	0	0.45	V

Table 47: USIM_VDD High/Low-voltage I/O Requirements

Parameter	Description	Min.	Max.	Unit
V _{IH}	High-level input voltage	0.7 × USIM_VDD	USIM_VDD + 0.3	V
V _{IL}	Low-level input voltage	-0.3	0.2 × USIM_VDD	V
V _{OH}	High-level output voltage	0.8 × USIM_VDD	USIM_VDD	V
V _{OL}	Low-level output voltage	0	0.4	V

Table 48: SDIO_VDD 1.8 V I/O Requirements

Parameter	Description	Min.	Max.	Unit
V _{IH}	High-level input voltage	1.27	2.0	V
V _{IL}	Low-level input voltage	-0.3	0.58	V
V _{OH}	High-level output voltage	1.4	SDIO_VDD	V
V _{OL}	Low-level output voltage	0	0.45	V

Table 49: SDIO_VDD 3.0 V I/O Requirements

Parameter	Description	Min.	Max.	Unit
V _{IH}	High-level input voltage	0.625 × SDIO_VDD	SDIO_VDD + 0.3	V
V _{IL}	Low-level input voltage	-0.3	0.25 × SDIO_VDD	V
V _{OH}	High-level output voltage	0.75 × SDIO_VDD	SDIO_VDD	V
V _{OL}	Low-level output voltage	0	0.125× SDIO_VDD	V

6.5. ESD Protection

Static electricity occurs naturally and it may damage the module. Therefore, applying proper ESD countermeasures and handling methods is imperative. For example, wear anti-static gloves during the development, production, assembly and testing of the module; add ESD protection components to the ESD sensitive interfaces and points in the product design.

Table 50: Electrostatic Discharge Characteristics (Temperature: 25–30 °C, Humidity: 40 ±5 %)

Tested Points	Contact Discharge	Air Discharge	Unit
VBAT, GND	±5	±10	kV
Antenna Interfaces	±4	±8	kV
Other Interfaces	±0.5	±1	kV

6.6. Operation and Storage Temperatures

Table 51: Operating and Storage Temperatures

Parameter	Min.	Typ.	Max.	Unit
Operating Temperature Range ¹⁰	-25	+25	+75	°C
Extended Operation Range ¹¹	-30	-	+85	°C
Storage Temperature range	-40	-	+90	°C

6.7. Thermal Dissipation

The module offers the best performance when all internal IC chips are working within their operating temperatures. When the IC chip reaches or exceeds the maximum junction temperature, the module may still work but the performance and function (such as RF output power, data rate) will be affected to a certain extent. Therefore, the thermal design should be maximally optimized to ensure all internal IC chips always work within the recommended operating temperature range.

The following principles for thermal consideration are provided for reference:

- Keep the module away from heat sources on your PCB, especially high-power components such as processor, power amplifier, and power supply.
- Maintain the integrity of the PCB copper layer and drill as many thermal vias as possible.
- Follow the principles below when the heatsink is necessary:
 - Do not place large size components in the area where the module is mounted on your PCB to reserve enough place for heatsink installation.
 - Attach the heatsink to the shielding cover of the module; In general, the base plate area of the heatsink should be larger than the module area to cover the module completely;
 - Choose the heatsink with adequate fins to dissipate heat;
 - Choose a TIM (Thermal Interface Material) with high thermal conductivity, good softness and good wettability and place it between the heatsink and the module;

¹⁰ To meet the normal operating temperature range requirements, it is necessary to ensure effective thermal dissipation, e.g., by adding passive or active heatsinks, heat pipes, vapor chambers. Within this range, the module can meet 3GPP specifications.

¹¹ To meet the extended operating temperature range requirements, it is necessary to ensure effective thermal dissipation, e.g., by adding passive or active heatsinks, heat pipes, vapor chambers. Within this extended temperature range, the module remains the ability to establish and maintain functions such as SMS, emergency call*, without any unrecoverable malfunction. Radio spectrum and radio network are not influenced, while one or more specifications, such as P_{out}, may undergo a reduction in value, exceeding the specified tolerances of 3GPP. When the temperature returns to the normal operating temperature level, the module will meet 3GPP specifications again.

- Fasten the heatsink with four screws to ensure that it is in close contact with the module to prevent the heatsink from falling off during the drop, vibration test, or transportation.

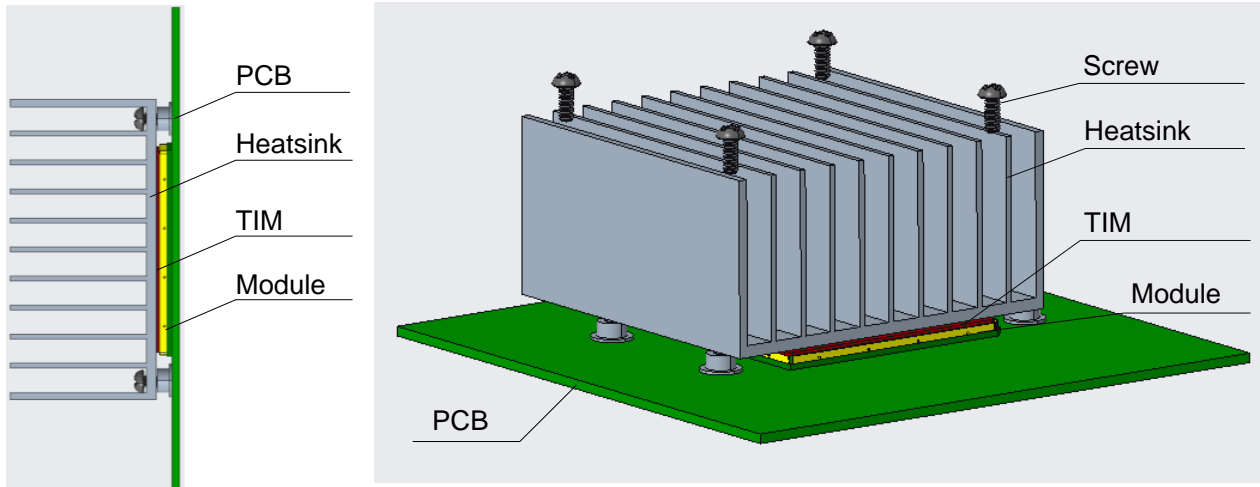


Figure 41: Placement and Fixing of the Heatsink

7 Mechanical Information

This chapter describes the mechanical dimensions of the module. All dimensions are measured in millimeter (mm), and the dimensional tolerances are ± 0.2 mm unless otherwise specified.

7.1. Mechanical Dimensions

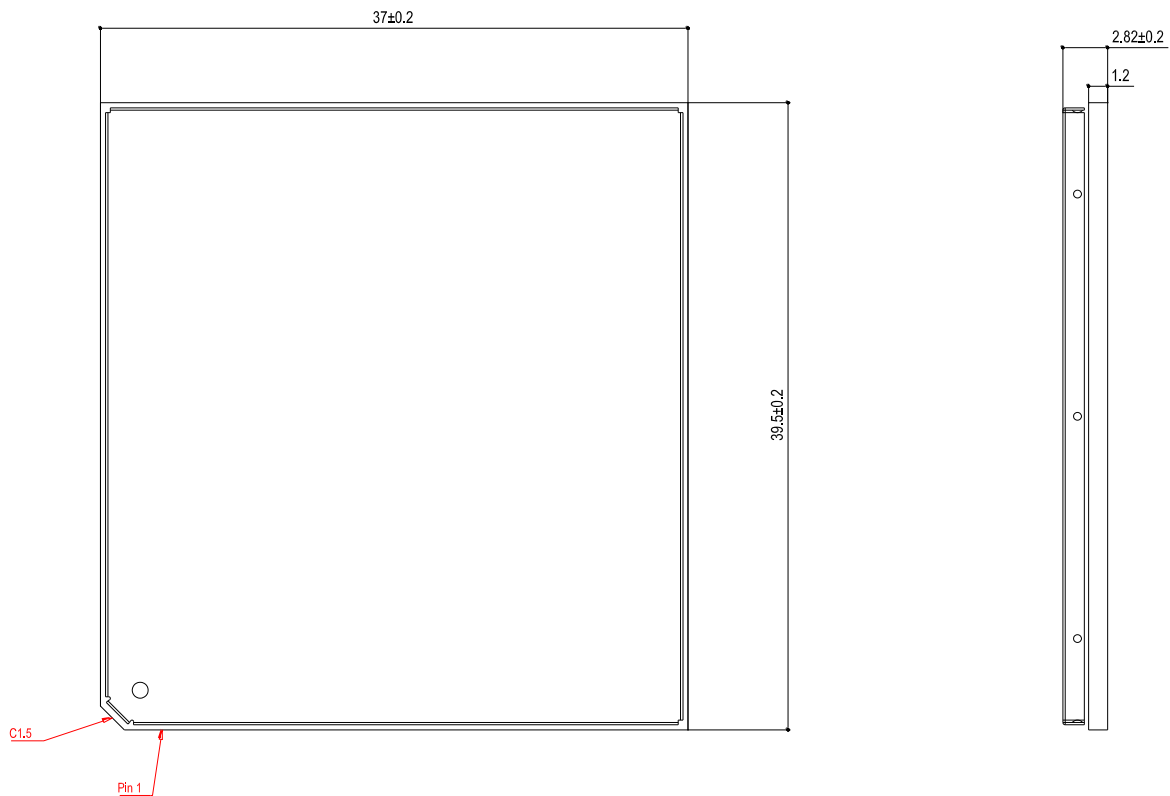


Figure 42: Module Top and Side Dimensions

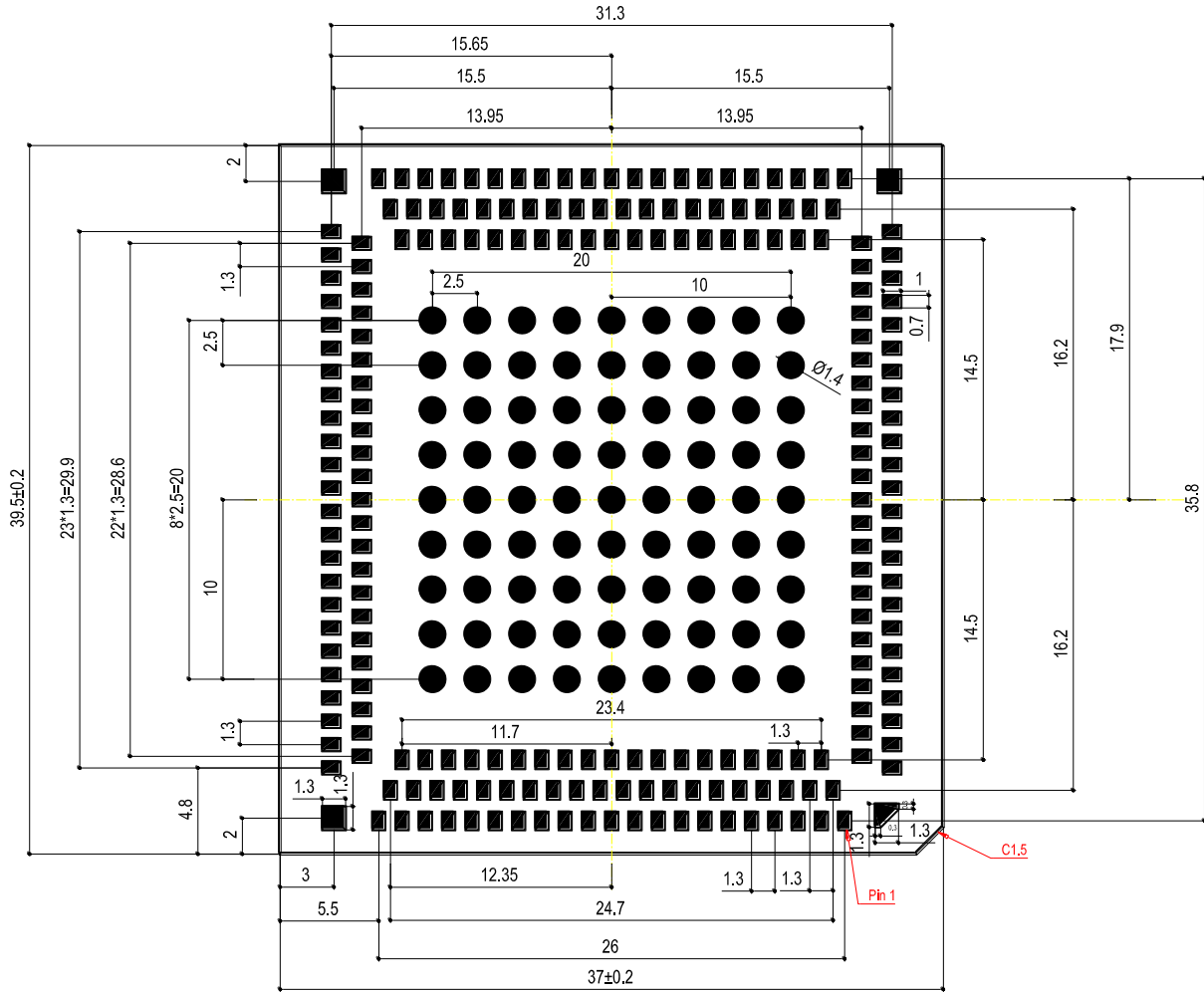


Figure 43: Module Bottom Dimensions (Bottom View)

NOTE

The package warpage level of the module refers to the *JEITA ED-7306* standard.

7.2. Recommended Footprint

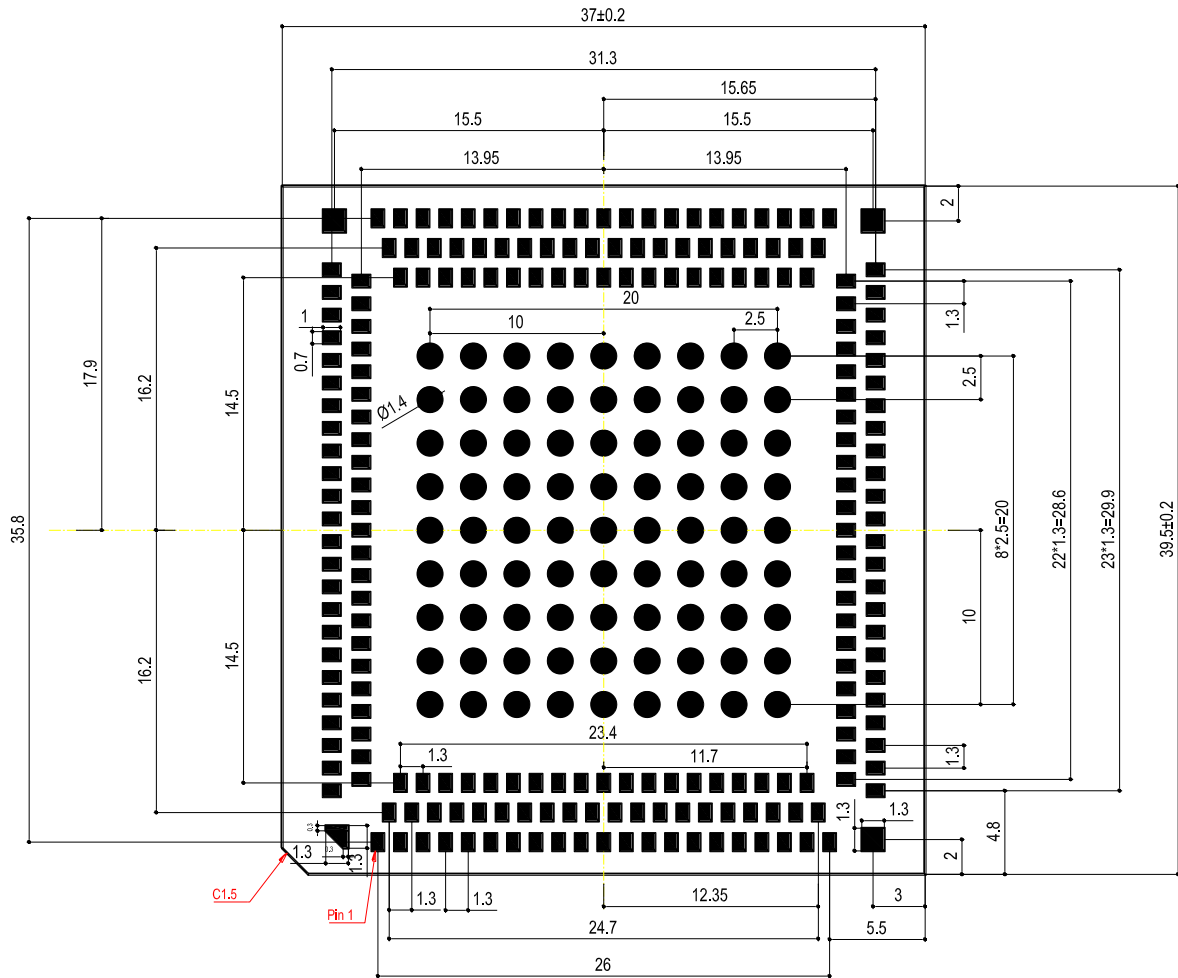


Figure 44: Recommended Footprint

NOTE

Keep at least 3 mm between the module and other components on the motherboard to improve soldering quality and maintenance convenience.

7.3. Top and Bottom Views

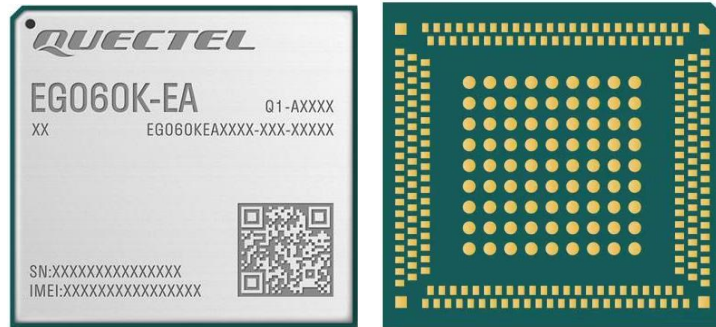


Figure 45: Top and Bottom Views of EG060K-EA



Figure 46: Top and Bottom Views of EG060K-NA



Figure 47: Top and Bottom Views of EG060K-LA

NOTE

Images above are for illustration purpose only and may differ from the actual module. For authentic appearance and label, see the module received from Quectel.

8 Storage, Manufacturing & Packaging

8.1. Storage Conditions

The module is provided with vacuum-sealed packaging. MSL of the module is rated as 3. The storage requirements are shown below.

1. Recommended Storage Condition: the temperature should be 23 ± 5 °C and the relative humidity should be 35–60 %.
2. Shelf life (in a vacuum-sealed packaging): 12 months in Recommended Storage Condition.
3. Floor life: 168 hours ¹² in a factory where the temperature is 23 ± 5 °C and relative humidity is below 60 %. After the vacuum-sealed packaging is removed, the module must be processed in reflow soldering or other high-temperature operations within 168 hours. Otherwise, the module should be stored in an environment where the relative humidity is less than 10 % (e.g., a dry cabinet).
4. The module should be pre-baked to avoid blistering, cracks and inner-layer separation in PCB under the following circumstances:
 - The module is not stored in Recommended Storage Condition;
 - Violation of the third requirement mentioned above;
 - Vacuum-sealed packaging is broken, or the packaging has been removed for over 24 hours;
 - Before module repairing.
5. If needed, the pre-baking should follow the requirements below:
 - The module should be baked for 8 hours at 120 ± 5 °C;
 - The module must be soldered to PCB within 24 hours after the baking, otherwise it should be put in a dry environment such as in a dry cabinet.

¹² This floor life is only applicable when the environment conforms to *IPC/JEDEC J-STD-033*. It is recommended to start the solder reflow process within 24 hours after the package is removed if the temperature and moisture do not conform to, or are not sure to conform to *IPC/JEDEC J-STD-033*. Do not unpack the modules in large quantities until they are ready for soldering.

NOTE

1. To avoid blistering, layer separation and other soldering issues, extended exposure of the module to the air is forbidden.
2. Take out the module from the package and put it on high-temperature-resistant fixtures before baking. If shorter baking time is desired, see IPC/JEDEC J-STD-033 for the baking procedure.
3. Pay attention to ESD protection, such as wearing anti-static gloves, when touching the modules.

8.2. Manufacturing and Soldering

Push the squeegee to apply the solder paste on the surface of stencil, thus making the paste fill the stencil openings and then penetrate to the PCB. Apply proper force on the squeegee to produce a clean stencil surface on a single pass. To guarantee module soldering quality, the thickness of stencil for the module is recommended to be 0.13–0.18 mm. For more details, see **document [5]**.

The peak reflow temperature ranges from 235–246 °C, with 246 °C as the absolute maximum reflow temperature. To avoid damage to the module caused by repeated heating, it is strongly recommended that the module should be mounted only after reflow soldering for the other side of PCB has been completed. The recommended reflow soldering thermal profile (lead-free reflow soldering) and related parameters are shown below.

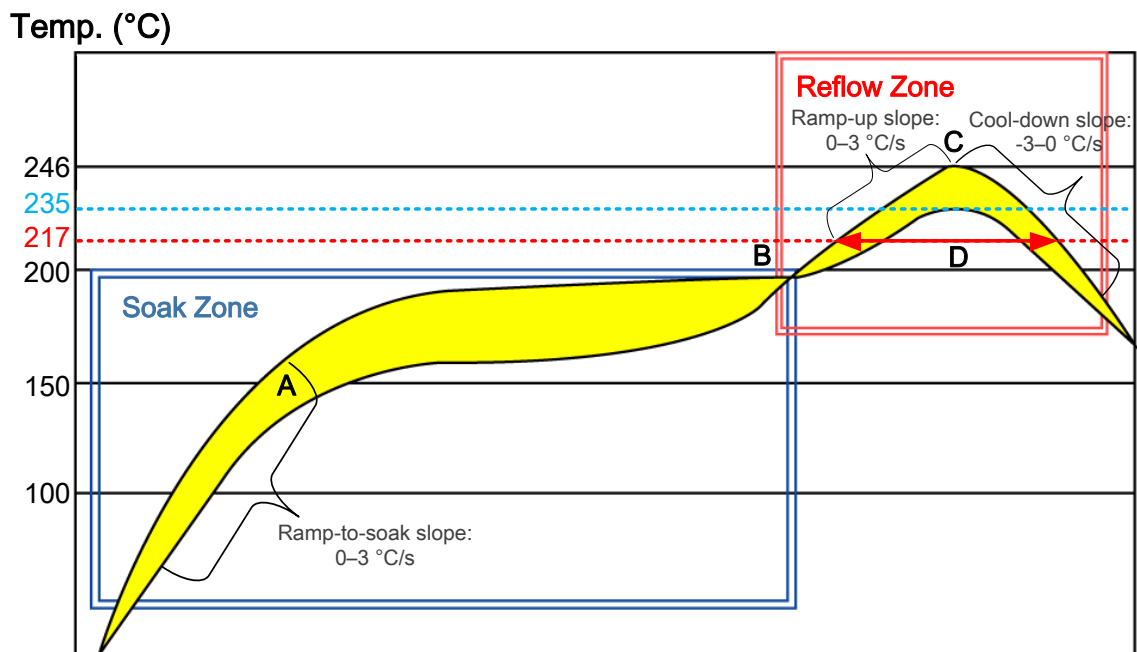


Figure 48: Reflow Soldering Thermal Profile

Table 52: Recommended Thermal Profile Parameters

Factor	Recommended Value
Soak Zone	
Ramp-to-soak Slope	0–3 °C/s
Soak Time (between A and B: 150 °C and 200 °C)	70–120 s
Reflow Zone	
Ramp-up Slope	0–3 °C/s
Reflow Time (D: over 217°C)	40–70 s
Max Temperature	235–246 °C
Cool-down Slope	-3–0 °C/s
Reflow Cycle	
Max Reflow Cycle	1

NOTE

1. The above profile parameter requirements are for the measured temperature of the solder joints. Both the hottest and coldest spots of solder joints on the PCB should meet the above requirements.
2. If a conformal coating is necessary for the module, do not use any coating material that may chemically react with the PCB or shielding cover, and prevent the coating material from flowing into the module.
3. Avoid using ultrasonic technology for module cleaning since it can damage crystals inside the module.
4. Avoid using materials that contain mercury (Hg), such as adhesives, for module processing, even if the materials are RoHS compliant and their mercury content is below 1000 ppm (0.1 %).
5. Due to the complexity of the SMT process, please contact Quectel Technical Supports in advance for any situation that you are not sure about, or any process (e.g. selective soldering, ultrasonic soldering) that is not mentioned in **document [5]**.

8.3. Packaging Specification

This chapter describes only the key parameters and process of packaging. All figures below are for reference only. The appearance and structure of the packaging materials are subject to the actual delivery.

The module adopts carrier tape packaging and details are as follow:

8.3.1. Carrier Tape

Dimension details are as follow:

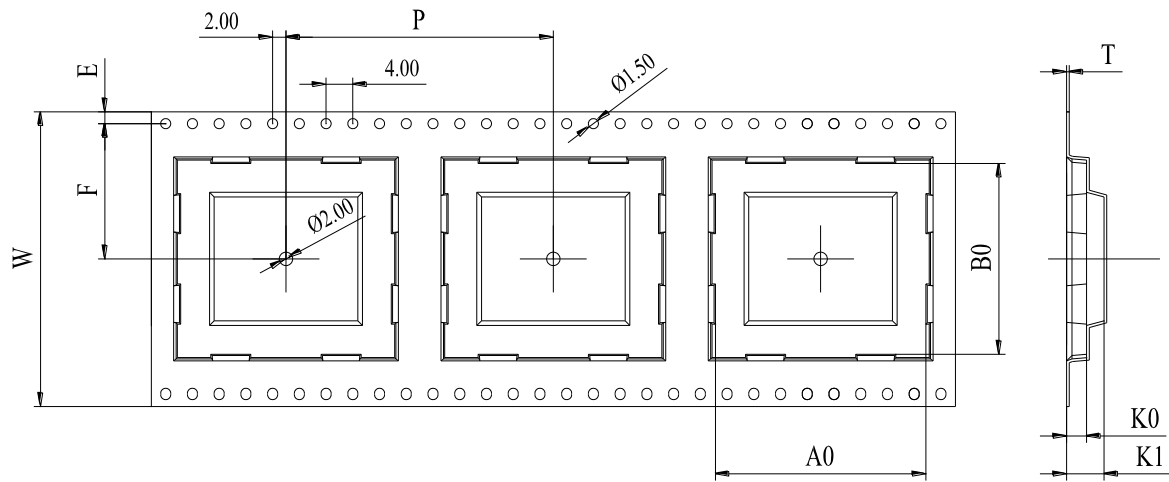


Figure 49: Carrier Tape Dimension Drawing

Table 53: Carrier Tape Dimension Table (Unit: mm)

W	P	T	A0	B0	K0	K1	F	E
56	48	0.35	40	37.5	3.9	5.3	26.2	1.75

8.3.2. Plastic Reel

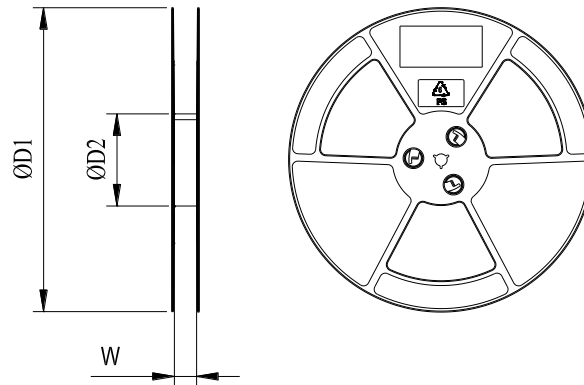


Figure 50: Plastic Reel Dimension Drawing

Table 54: Plastic Reel Dimension Table (Unit: mm)

ØD1	ØD2	W
330	100	56.5

8.3.3. Mounting Direction

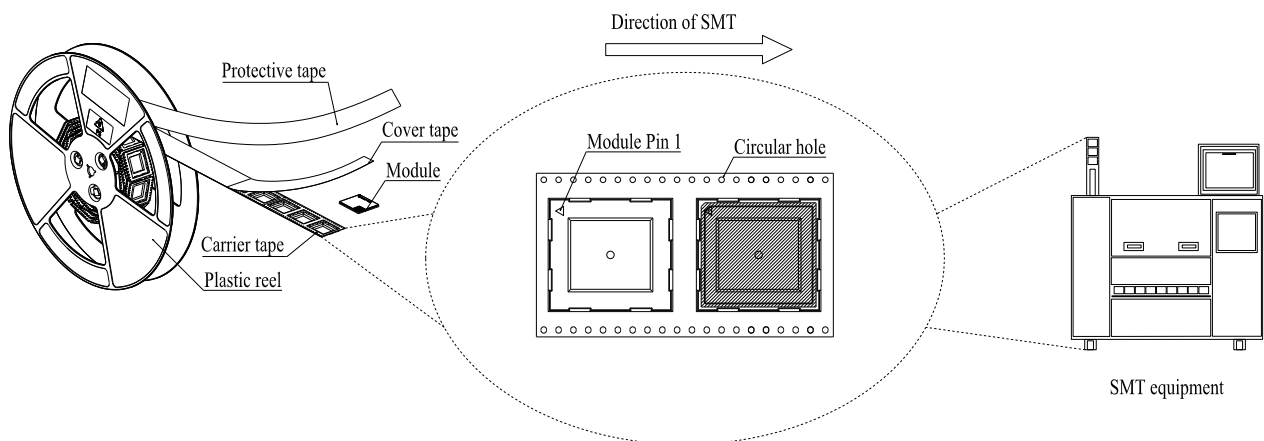
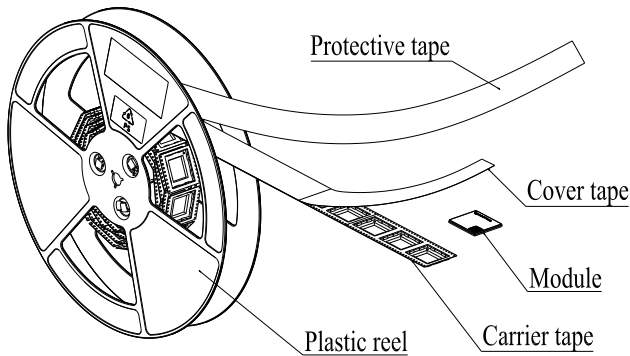


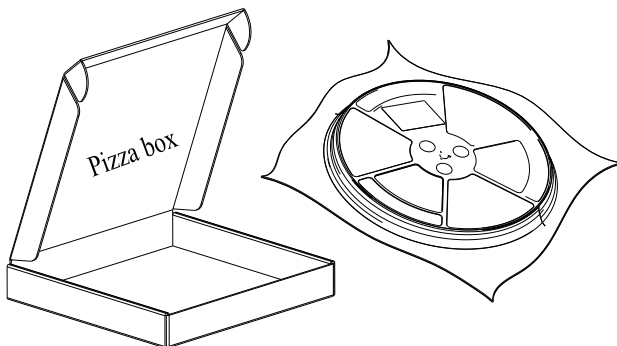
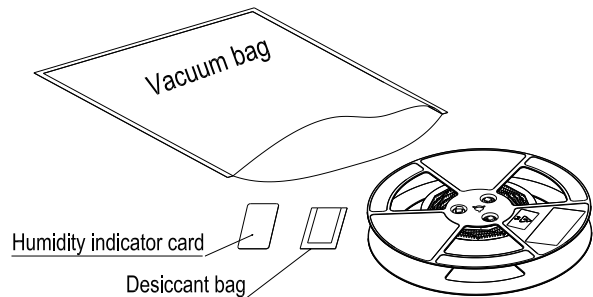
Figure 51: Mounting Direction

8.3.4. Packaging Process



Place the module into the carrier tape and use the cover tape to cover it; then wind the heat-sealed carrier tape to the plastic reel and use the protective tape for protection. 1 plastic reel can load 200 modules.

Place the packaged plastic reel, 1 humidity indicator card and 1 desiccant bag into a vacuum bag, vacuumize it.



Place the vacuum-packed plastic reel into the pizza box.

Put 4 packaged pizza boxes into 1 carton box and seal it. 1 carton box can pack 800 modules.

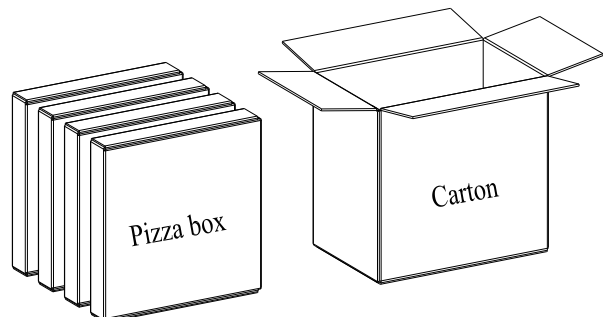


Figure 52: Packaging Process

9 Appendix References

Table 55: Related Documents

Document Name
[1] Quectel_EG060K_Series(EA,LA,NA)_CA_Feature
[2] Quectel_UMTS<E_EVB_R2.0_User_Guide
[3] Quectel_EG06xK&Ex120K&EM060K_Series_AT_Commands_Manual
[4] Quectel_RF_Layout_Application_Note
[5] Quectel_Module_Secondary_SMT_Application_Note

Table 56: Term and Abbreviation

Abbreviation	Description
ADC	Analog-to-Digital Converter
AMR	Adaptive Multi-Rate
AMR-WB	Adaptive Multi-Rate Wideband
BDS	BeiDou Navigation Satellite System
bps	bit(s) per second
CA	Carrier Aggregation
CHAP	Challenge-Handshake Authentication Protocol
CPE	Customer Premise Equipment
CS	Coding Scheme
CTS	Clear To Send

DC-HSDPA	Dual-carrier High Speed Downlink Packet Access
DFOTA	Delta Firmware Upgrade Over-the-Air
DL	Downlink
DRX	Discontinuous Reception
DTR	Data Terminal Ready
DTX	Discontinuous Transmission
EFR	Enhanced Full Rate
ESD	Electrostatic Discharge
ESR	Equivalent Series Resistance
EVB	Evaluation Board
FDD	Frequency Division Duplex
FR	Full Rate
GLONASS	Global Navigation Satellite System (Russia)
GMSK	Gaussian Minimum Shift Keying
GND	Ground
GNSS	Global Navigation Satellite System
GPS	Global Positioning System
HR	Half Rate
HSDPA	High Speed Downlink Packet Access
HSUPA	High Speed Uplink Packet Access
HSPA+	Evolved High Speed Packet Access
I/O	Input/Output
LDO	Low-dropout Regulator
LED	Light Emitting Diode
LGA	Land Grid Array

LNA	Low-Noise Amplifier
LTE	Long-Term Evolution
M2M	Machine to Machine
ME	Mobile Equipment
MLCC	Multi-layer Ceramic Capacitor
MIMO	Multiple Input Multiple Output
MO	Mobile Originated
MOSFET	Metal-Oxide-Semiconductor Field-Effect Transistor
MS	Mobile Station
MT	Mobile Terminated
NAND	NON-AND
NMEA	National Marine Electronics Association
OTG	On-The-Go
PAP	Password Authentication Protocol
PC	Personal Computer
PCB	Printed Circuit Board
PCM	Pulse Code Modulation
PDA	Personal Digital Assistant
PDU	Protocol Data Unit
POS	Point of Sale
PPP	Point-to-Point Protocol
QAM	Quadrature Amplitude Modulation
QPSK	Quadrature Phase Shift Keying
RTS	Ready To Send/Request to Send
RF	Radio Frequency

RHCP	Right Hand Circular Polarization
Rx	Receive
SD Card	Secure Digital Card
SDIO	Secure Digital Input/Output
SIMO	Single Input Multiple Output
SPI	Serial Peripheral Interface
SIMO	Single Input Multiple Output
SLIC	Subscriber Line Interface Circuit
SMD	Surface Mount Device
SMS	Short Message Service
SMT	Surface Mount Technology
TCP	Transmission Control Protocol
TDD	Time Division Duplex
TIM	Thermal Interface Material
TTFF	Time to First Fix
TVS	Transient Voltage Suppressor
Tx	Transmit
UART	Universal Asynchronous Receiver/Transmitter
UDP	User Datagram Protocol
UL	Uplink
UMTS	Universal Mobile Telecommunications System
URC	Unsolicited Result Code
(U)SIM	(Universal) Subscriber Identity Module
VBAT	Voltage at Battery
Vmax	Maximum Voltage

Vnom	Nominal Voltage
Vmin	Minimum Voltage
V _{IH} max	Maximum High-level Input Voltage
V _{IH} min	Minimum High-level Input Voltage
V _{IL} max	Maximum Low-level Input Voltage
VSWR	Voltage Standing Wave Ratio
WCDMA	Wideband Code Division Multiple Access

Important Notice to OEM integrators

1. This module is limited to OEM installation ONLY.
2. This module is limited to installation in mobile or fixed applications, according to Part 2.1091(b).
3. The separate approval is required for all other operating configurations, including portable configurations with respect to Part 2.1093 and different antenna configurations
4. For FCC Part 15.31 (h) and (k): The host manufacturer is responsible for additional testing to verify compliance as a composite system. When testing the host device for compliance with Part 15 Subpart B, the host manufacturer is required to show compliance with Part 15 Subpart B while the transmitter module(s) are installed and operating. The modules should be transmitting and the evaluation should confirm that the module's intentional emissions are compliant (i.e. fundamental and out of band emissions). The host manufacturer must verify that there are no additional unintentional emissions other than what is permitted in Part 15 Subpart B or emissions are complaint with the transmitter(s) rule(s). The Grantee will provide guidance to the host manufacturer for Part 15 B requirements if needed.

Important Note

notice that any deviation(s) from the defined parameters of the antenna trace, as described by the instructions, require that the host product manufacturer must notify to Quectel that they wish to change the antenna trace design. In this case, a Class II permissive change application is required to be filed by the USI, or the host manufacturer can take responsibility through the change in FCC ID XMR2024EG060KLA procedure followed by a Class II permissive change application.

End Product Labeling

When the module is installed in the host device, the FCC ID label must be visible through a window on the final device or it must be visible when an access panel, door or cover is easily re-moved. If not, a second label must be placed on the outside of the final device that contains the following text: "Contains FCC ID: XMR2024EG060KLA"

The FCC ID ID can be used only when all FCC compliance requirements are met.

Antenna Installation

- (1) The antenna must be installed such that 20 cm is maintained between the antenna and users,
- (2) The transmitter module may not be co-located with any other transmitter or antenna.
- (3) Only antennas of the same type and with equal or less gains as shown below may be used with this module. Other types of antennas and/or higher gain antennas may require additional authorization for operation.

Antenna Gain	LTE Band 2: 1.59dBi LTE Band 4: 2.00dBi LTE Band 5: 2.29dBi LTE Band 7: 3.00dBi LTE Band 8: 2.98dBi LTE Band 25: 1.59dBi	LTE Band 28: 3.95dBi LTE Band 42: -4.64dBi LTE Band 43: -4.11dBi LTE Band 66: 2.00dBi
---------------------	---	--

In the event that these conditions cannot be met (for example certain laptop configurations or co-location with another transmitter), then the FCC/IC authorization is no longer considered valid and the FCC ID/IC ID cannot be used on the final product. In these circumstances, the OEM integrator will be responsible for re-evaluating the end product (including the transmitter) and obtaining a separate FCC/IC authorization.

Manual Information to the End User

The OEM integrator has to be aware not to provide information to the end user regarding how to install or remove this RF module in the user's manual of the end product which integrates this module. The end user manual shall include all required regulatory information/warning as show in this manual.

List of applicable FCC rules

This module has been tested and found to comply with part 22, part 24, part 27, part 96, requirements for Modular Approval.

The modular transmitter is only FCC authorized for the specific rule parts (i.e., FCC transmitter rules) listed on the grant, and that the host product manufacturer is responsible for compliance to any other FCC rules that apply to the host not covered by the modular transmitter grant of certification. If the grantee markets their product as being Part 15 Subpart B compliant (when it also contains unintentional-radiator digital circuitry), then the grantee shall provide a notice stating that the final host product still requires Part 15 Subpart B compliance testing with the modular transmitter installed.

Integration instructions for host product manufacturers according to KDB 996369 D03 OEM Manual v01

2.2 List of applicable FCC rules

FCC part 22, part 24, part 27, part 96

2.3 Specific operational use conditions

The module can be used for mobile applications with a maximum 3.95dBi antenna. The host manufacturer installing this module into their product must ensure that the final product complies with the FCC requirements by a technical assessment or evaluation to the FCC rules, including the transmitter operation. The host manufacturer has to be aware not to provide information to the end user regarding how to install or remove this RF module in the user's manual of the end product which integrates this module. The end user manual shall include all required regulatory information/warning as shown in this manual.

2.4 Limited module procedures

Not applicable. The module is a Single module and complies with the requirement of FCC Part 15 212.

2.5 Trace antenna designs

Not applicable. The module has its own antenna, and doesn't need a host's printed board micro strip trace antenna etc.

2.6 RF exposure considerations

The module must be installed in the host equipment such that at least 20cm is maintained between the antenna and user's body; and if RF exposure statement or module layout is changed, then the host product manufacturer is required to take responsibility of the module through a change in FCC ID or new application. The FCC ID of the module cannot be used on the final product. In these circumstances, the host manufacturer will be responsible for reevaluating the end product (including the transmitter) and obtaining a separate FCC authorization.

2.7 Antennas

Antenna Specification are as follows:

Type: External Antenna

Gain: 3.95 dBi Max

This device is intended only for host manufacturers under the following conditions: The transmitter module may not be co-located with any other transmitter or antenna; The module shall be only used with the internal antenna(s) that has been originally tested and certified with this module. The antenna must be either permanently attached or employ a "unique" antenna coupler.

As long as the conditions above are met, further transmitter test will not be required. However, the host manufacturer is still responsible for testing their end-product for any additional compliance requirements required with this module installed (for example, digital device emissions, PC peripheral requirements, etc).

2.8 Label and compliance information

Host product manufacturers need to provide a physical or e-label stating "Contains FCC ID: XMR2024EG060KLA" with their finished product.

2.9 Information on test modes and additional testing requirements

Host manufacturer must perform test of radiated & conducted emission and spurious emission, etc. according to the actual test modes for a stand-alone modular transmitter in a host, as well as for

multiple simultaneously transmitting modules or other transmitters in a host product. Only when all the test results of test modes comply with FCC requirements, then the end product can be sold legally.

2.10 Additional testing, Part 15 Subpart B disclaimer

The modular transmitter is only FCC authorized for FCC part 22, part 24, part 27, part 96 and the host product manufacturer is responsible for compliance to any other FCC rules that apply to the host not covered by the modular transmitter grant of certification. If the grantee markets their product as being Part 15 Subpart B compliant (when it also contains unintentional-radiator digital circuitry), then the grantee shall provide a notice stating that the final host product still requires Part 15 Subpart B compliance testing with the modular transmitter installed.

This device is intended only for OEM integrators under the following conditions: (For module device use)

- 1) The antenna must be installed such that 20 cm is maintained between the antenna and users, and
- 2) The transmitter module may not be co-located with any other transmitter or antenna.

As long as 2 conditions above are met, further transmitter test will not be required. However, the OEM integrator is still responsible for testing their end-product for any additional compliance requirements required with this module installed.

Radiation Exposure Statement

This equipment complies with FCC radiation exposure limits set forth for an uncontrolled environment. This equipment should be installed and operated with minimum distance 20 cm between the radiator & your body.