

20MHz Channel Bandwidth - 1RB

Lower Band Edge



Upper Band Edge



25MHz Channel Bandwidth - 1RB

Lower Band Edge



Upper Band Edge



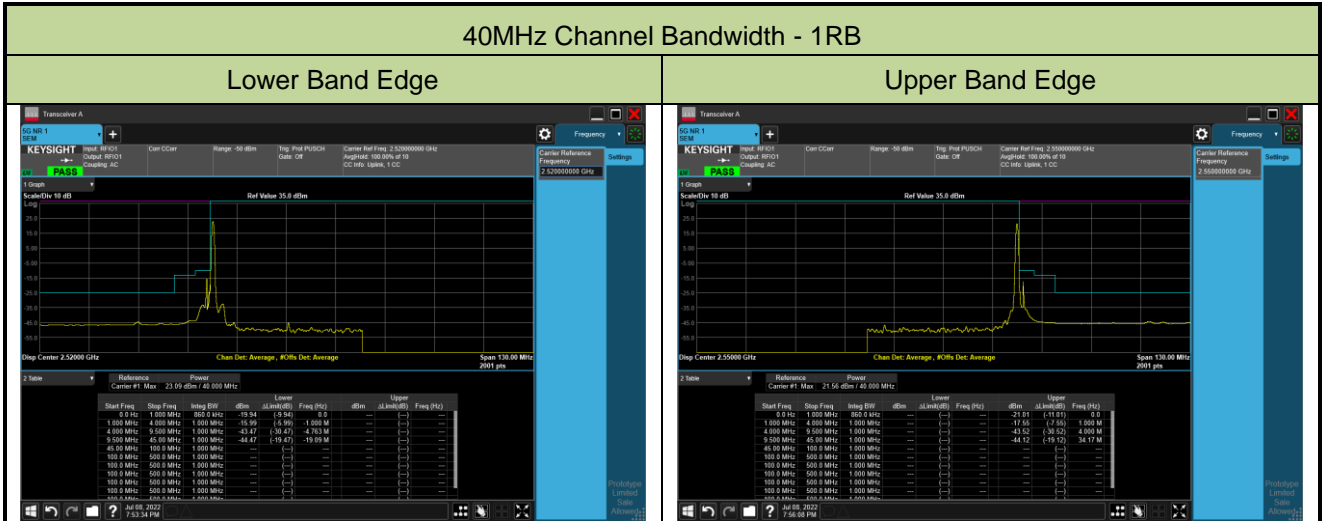
30MHz Channel Bandwidth - 1RB

Lower Band Edge



Upper Band Edge





### 5MHz Channel Bandwidth - Full RB

#### Lower Band Edge



#### Upper Band Edge

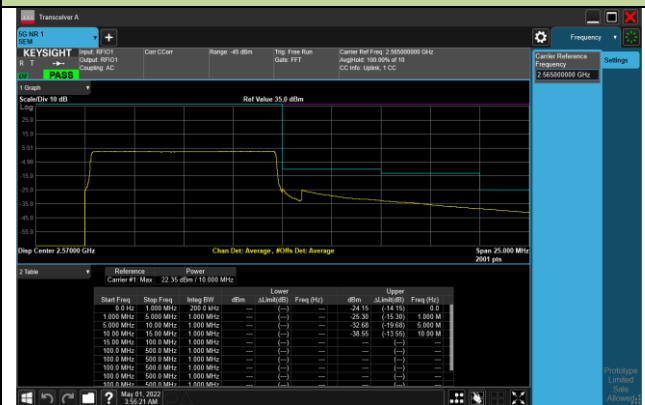


### 10MHz Channel Bandwidth - Full RB

#### Lower Band Edge

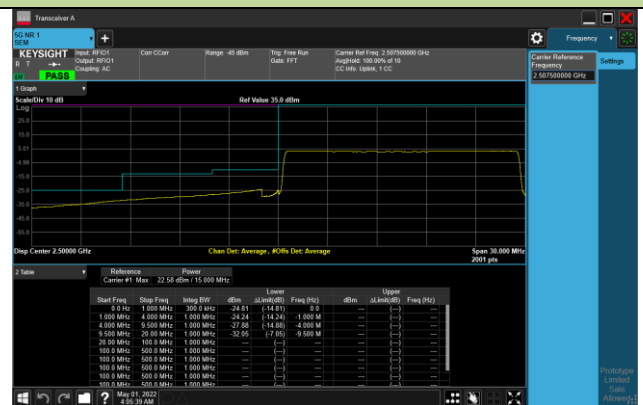


#### Upper Band Edge

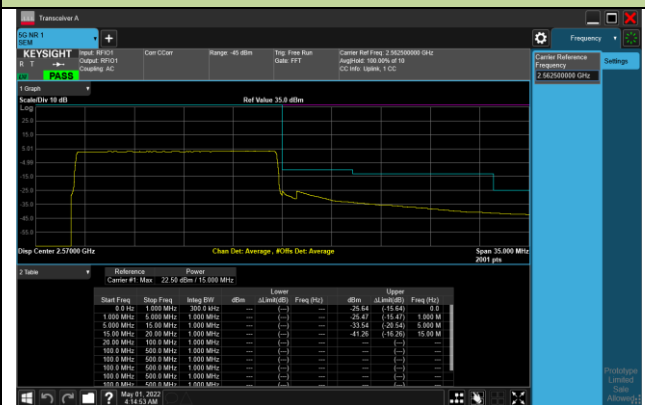


### 15MHz Channel Bandwidth - Full RB

#### Lower Band Edge



#### Upper Band Edge

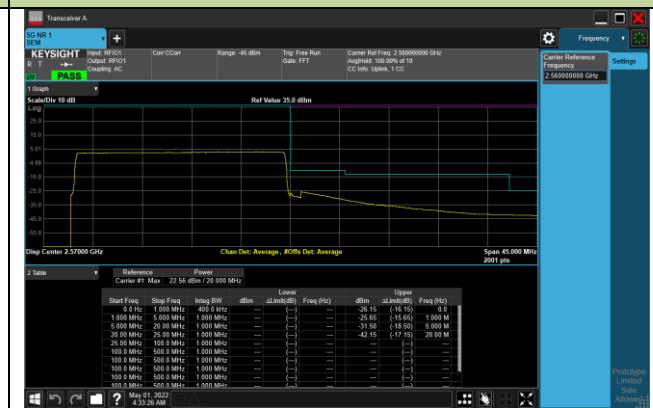


### 20MHz Channel Bandwidth - Full RB

#### Lower Band Edge

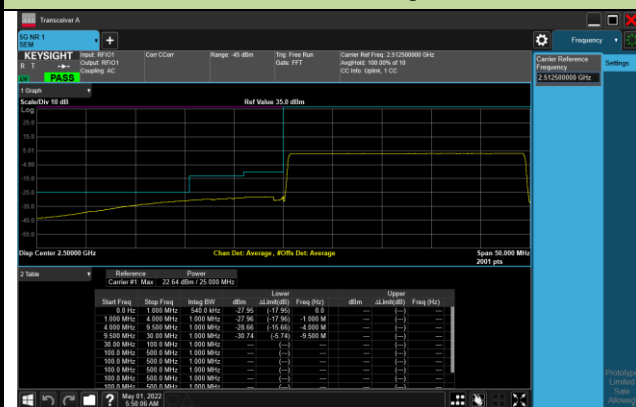


#### Upper Band Edge

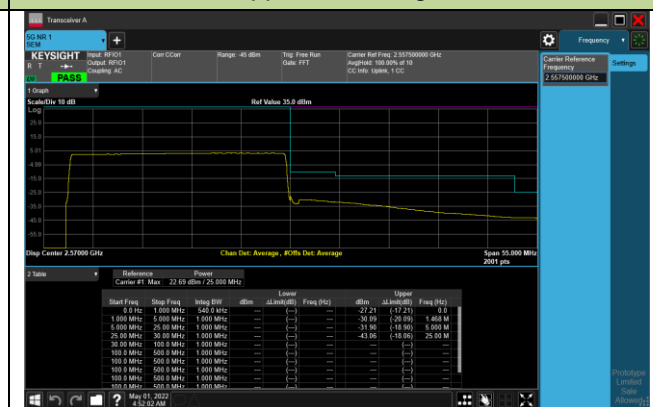


### 25MHz Channel Bandwidth - Full RB

#### Lower Band Edge



#### Upper Band Edge

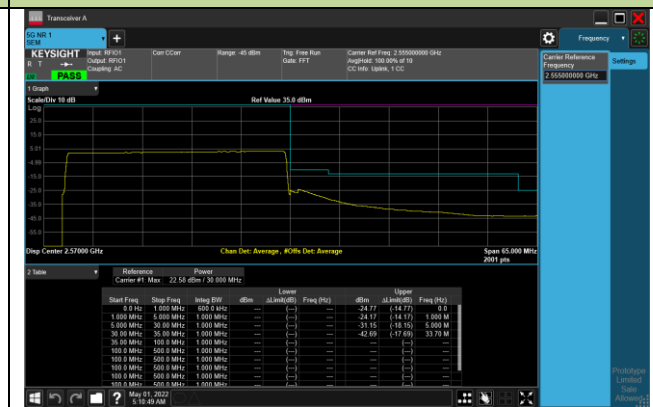


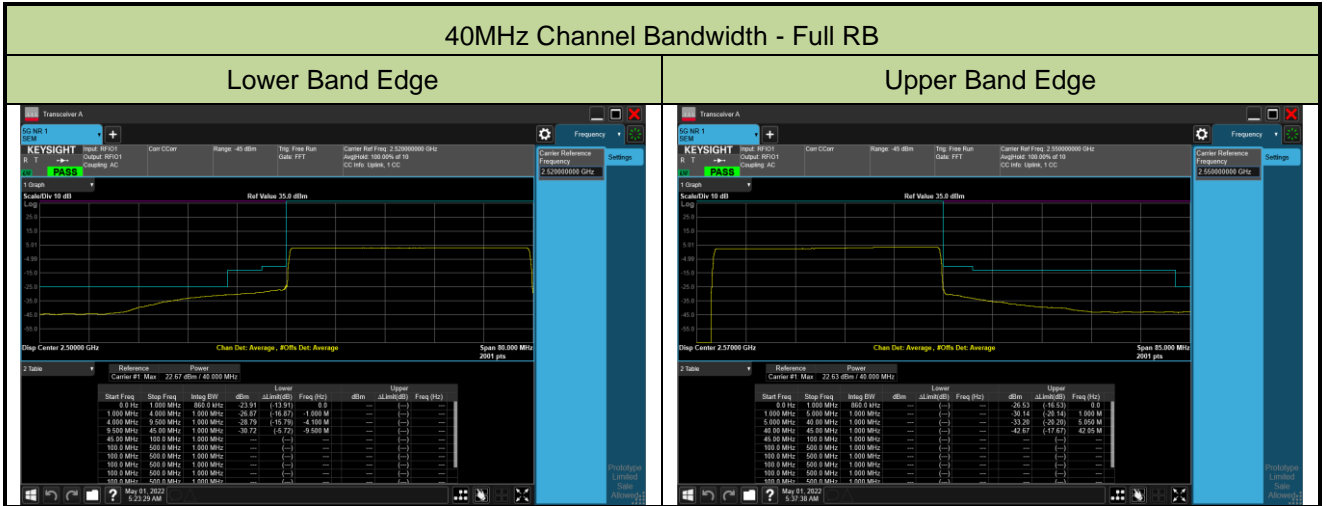
### 30MHz Channel Bandwidth - Full RB

#### Lower Band Edge



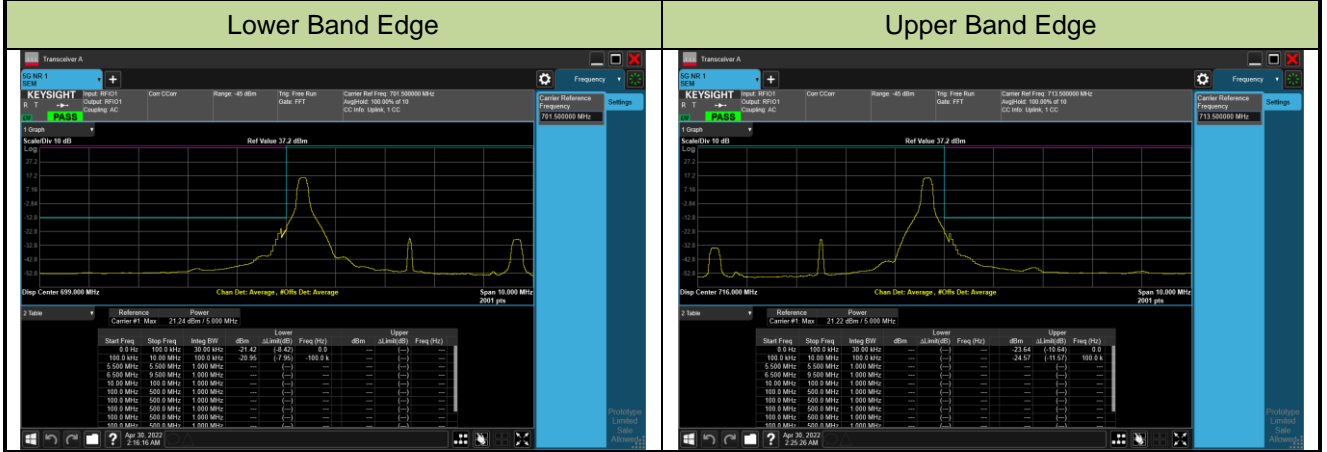
#### Upper Band Edge



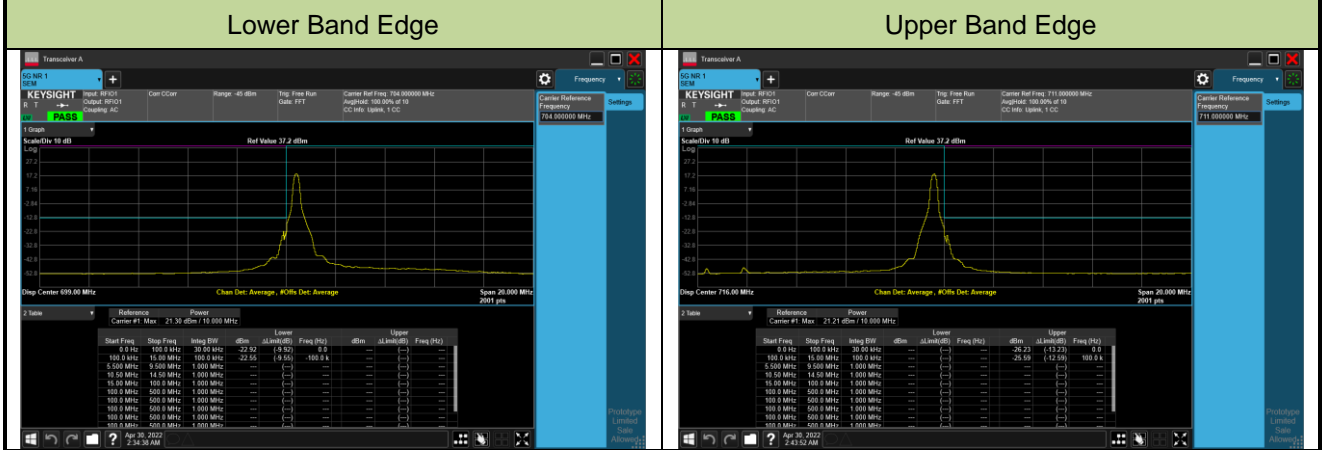


Test Site	SIP-SR1	Test Engineer	Candy Luo
Test Date	2022/04/30	Test Band	n12_SA

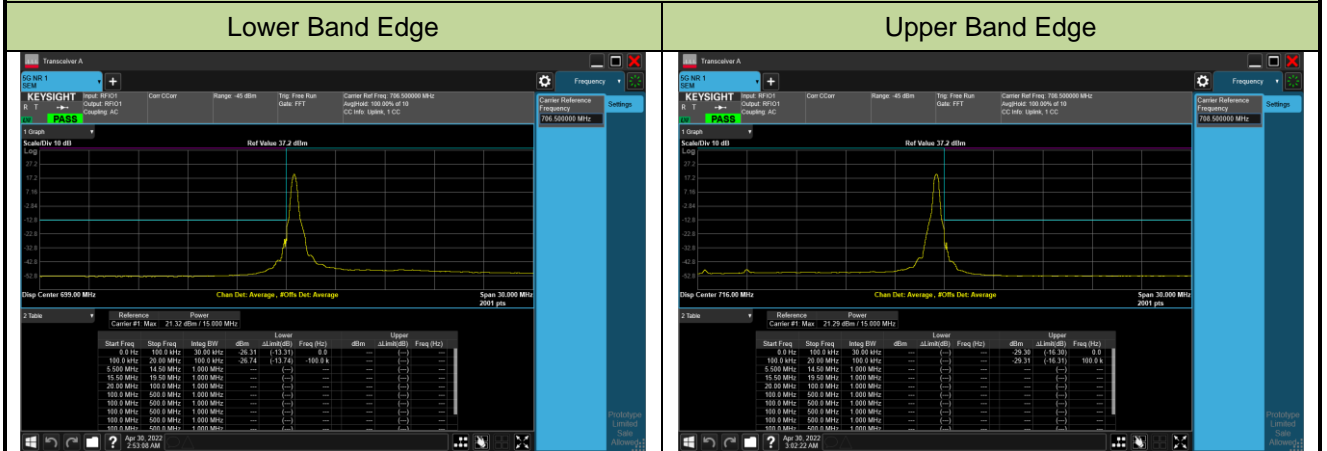
**5MHz Channel Bandwidth - 1RB**



**10MHz Channel Bandwidth - 1RB**

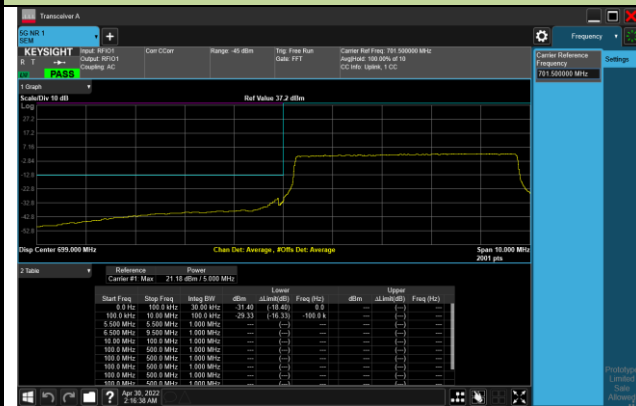


**15MHz Channel Bandwidth - 1RB**



### 5MHz Channel Bandwidth - Full RB

#### Lower Band Edge



#### Upper Band Edge



### 10MHz Channel Bandwidth - Full RB

#### Lower Band Edge

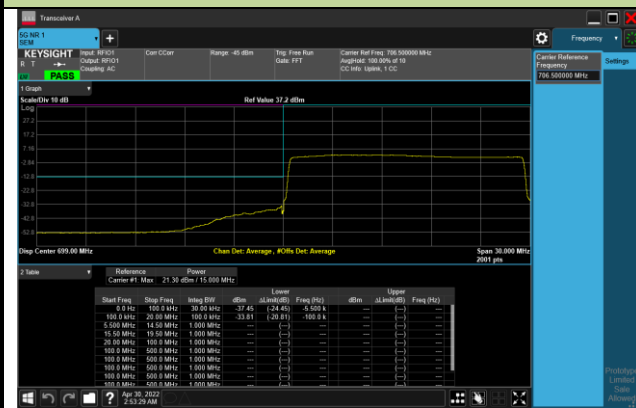


#### Upper Band Edge



### 15MHz Channel Bandwidth - Full RB

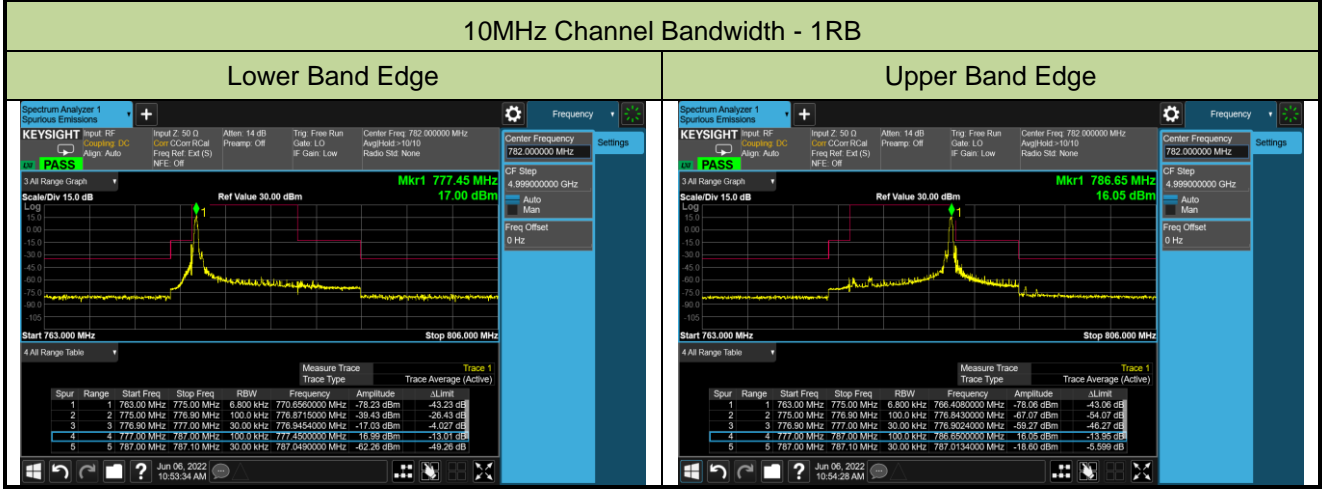
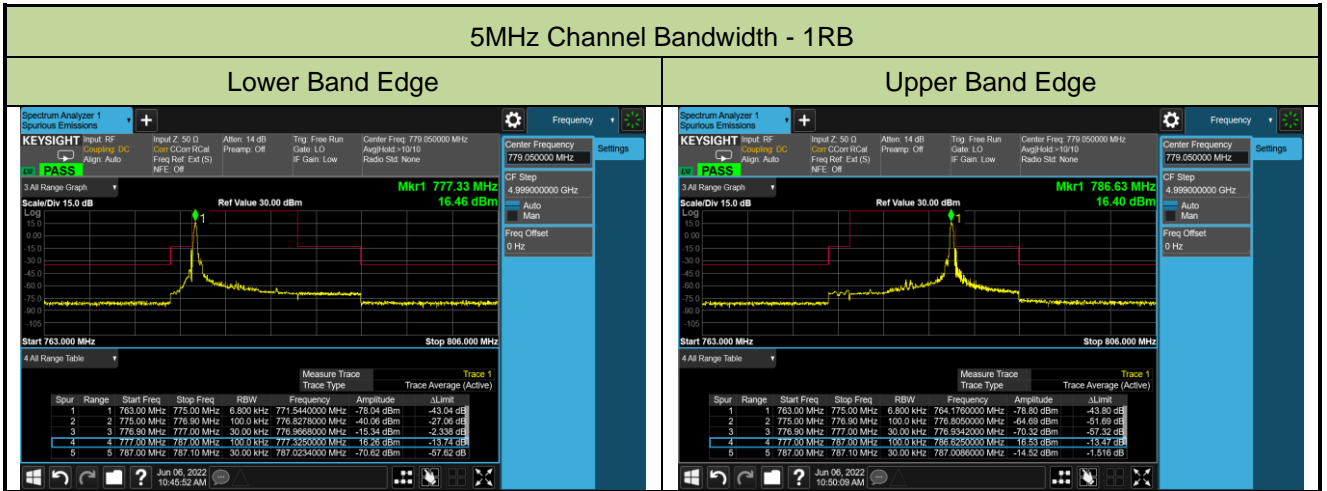
#### Lower Band Edge



#### Upper Band Edge



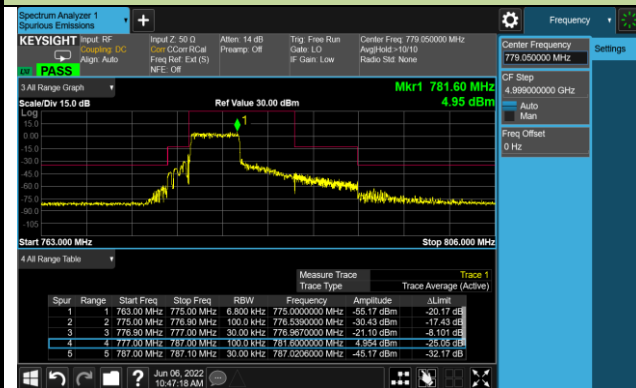
Test Site	SIP-SR1	Test Engineer	Candy Luo
Test Date	2022/06/06	Test Band	n13_SA



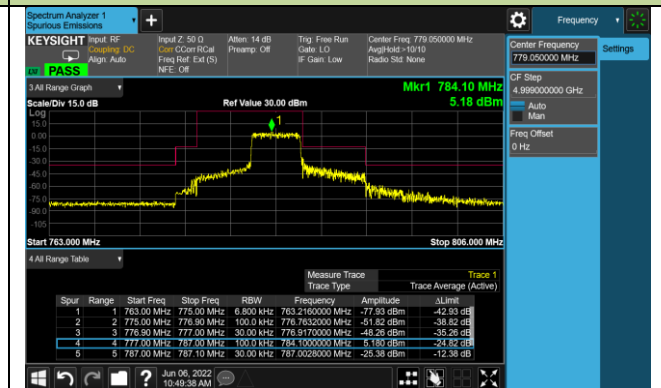


### 5MHz Channel Bandwidth - Full RB

#### Lower Band Edge

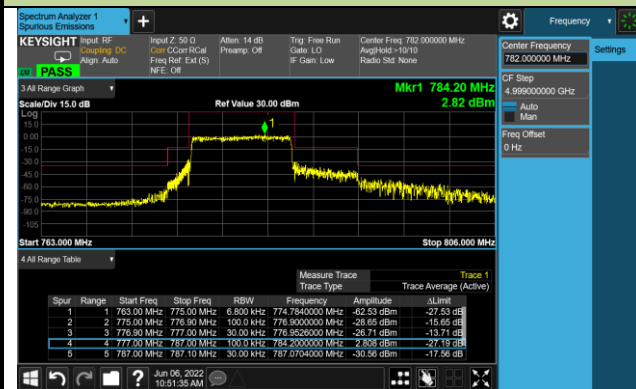


#### Upper Band Edge



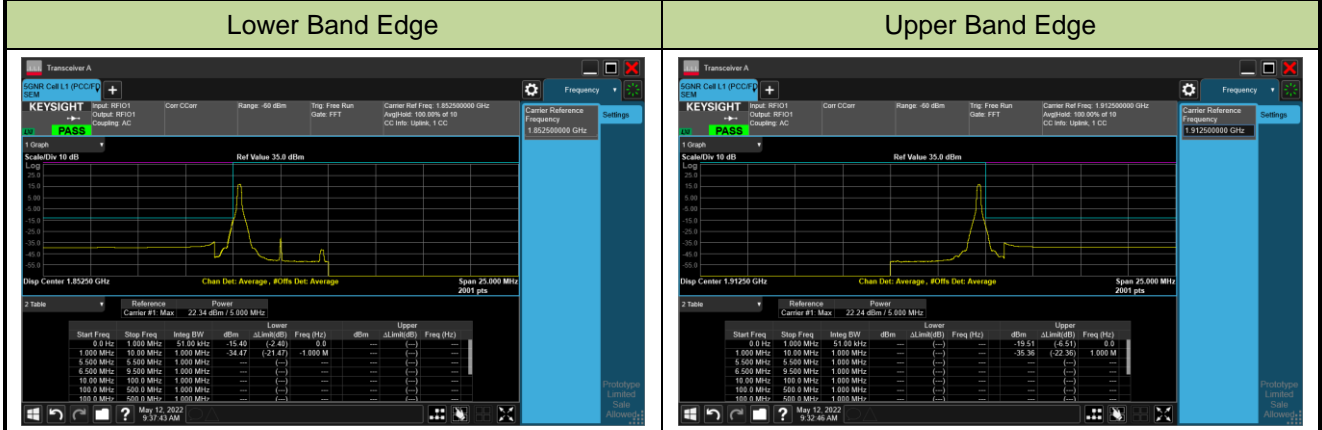
### 10MHz Channel Bandwidth - Full RB

#### Lower Band Edge

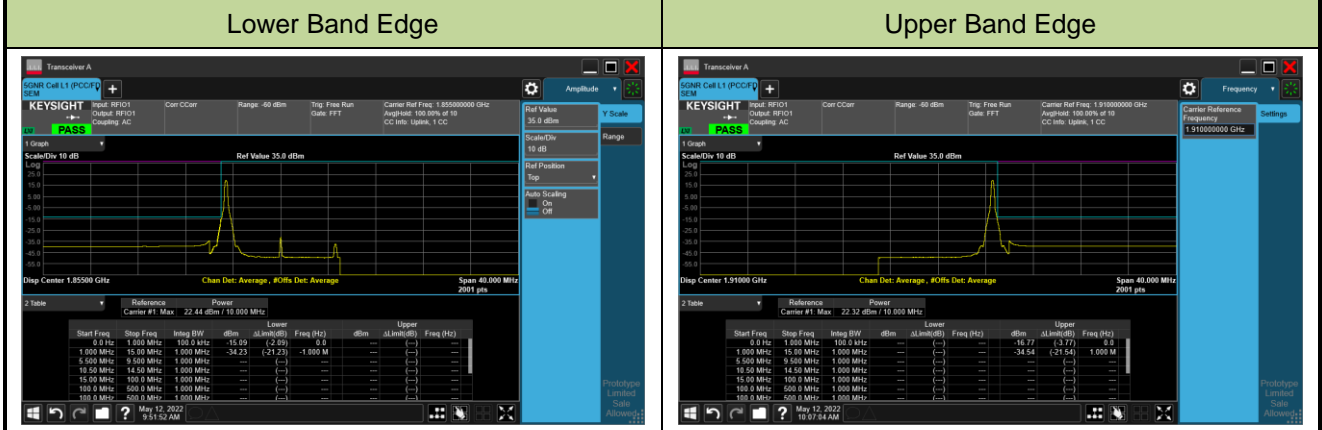


Test Site	SIP-SR1	Test Engineer	Candy Luo
Test Date	2022/05/12	Test Band	n25_SA

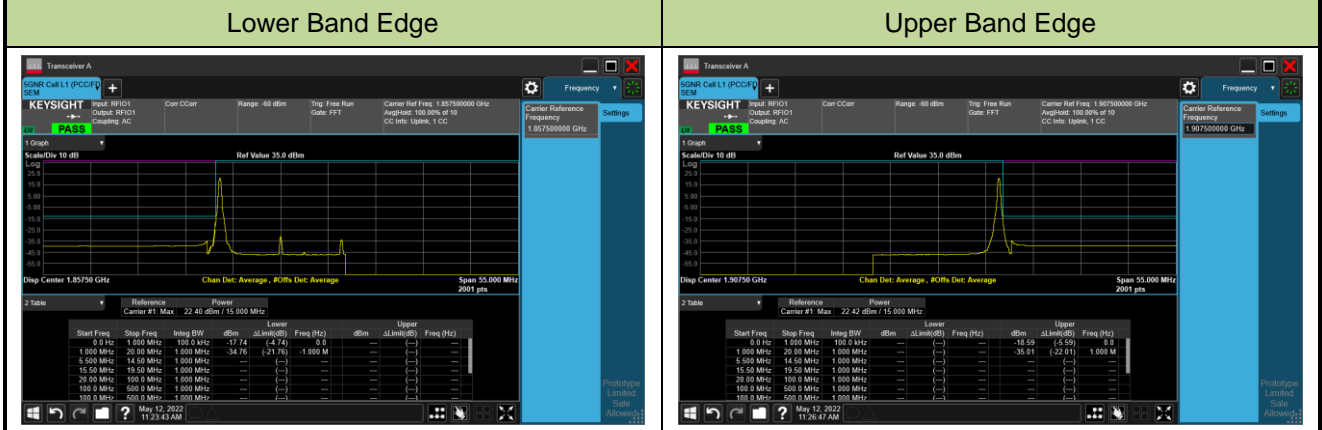
### 5MHz Channel Bandwidth - 1RB



### 10MHz Channel Bandwidth - 1RB

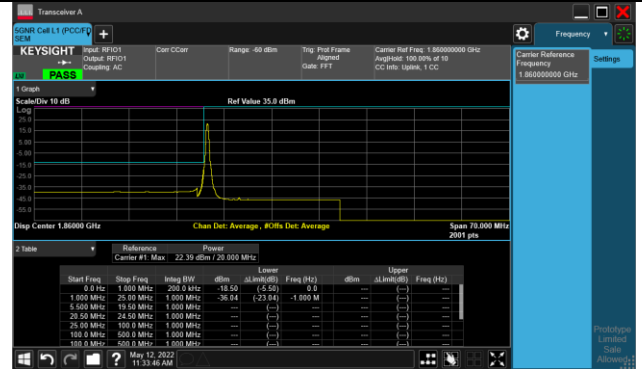


### 15MHz Channel Bandwidth - 1RB

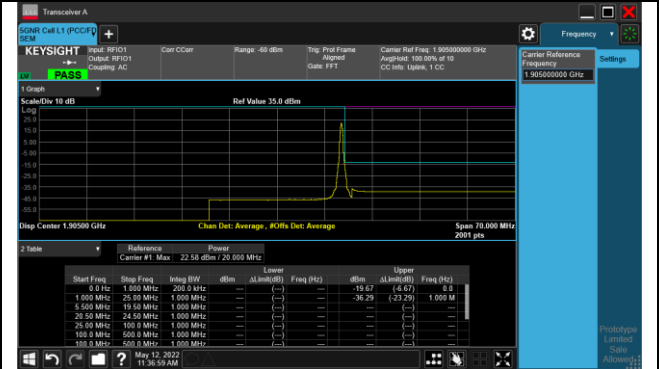


### 20MHz Channel Bandwidth - 1RB

#### Lower Band Edge

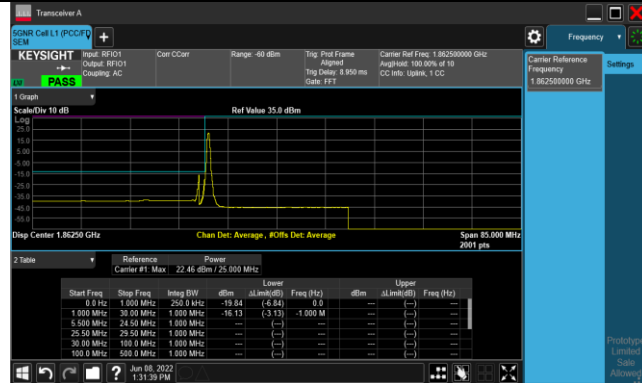


#### Upper Band Edge

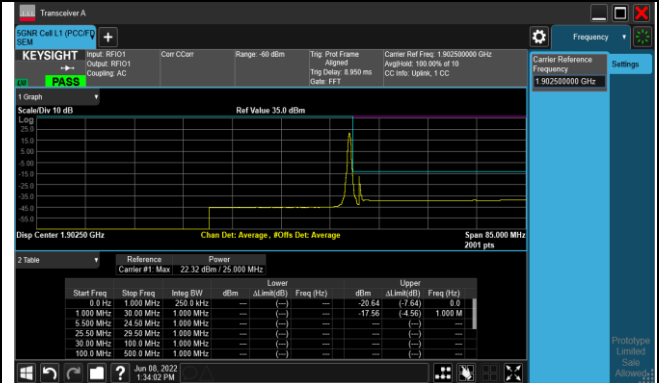


### 25MHz Channel Bandwidth - 1RB

#### Lower Band Edge

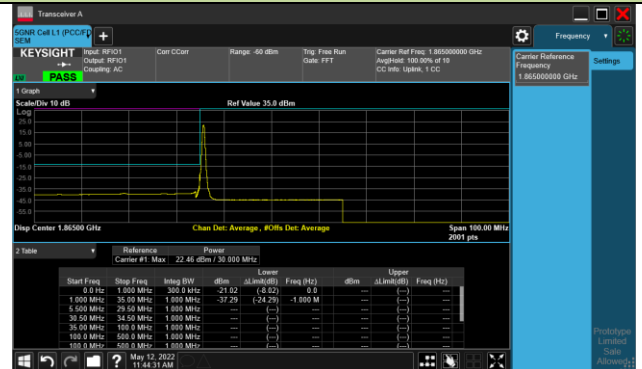


#### Upper Band Edge

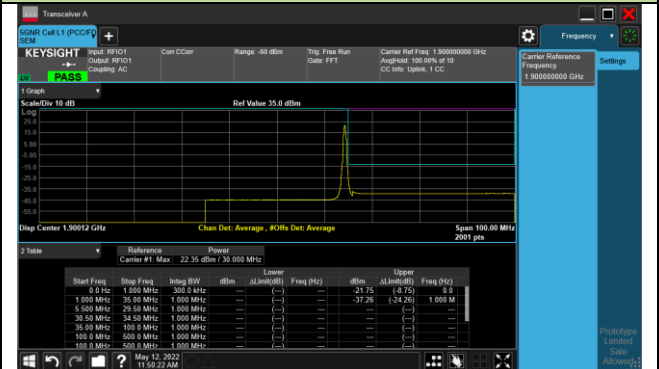


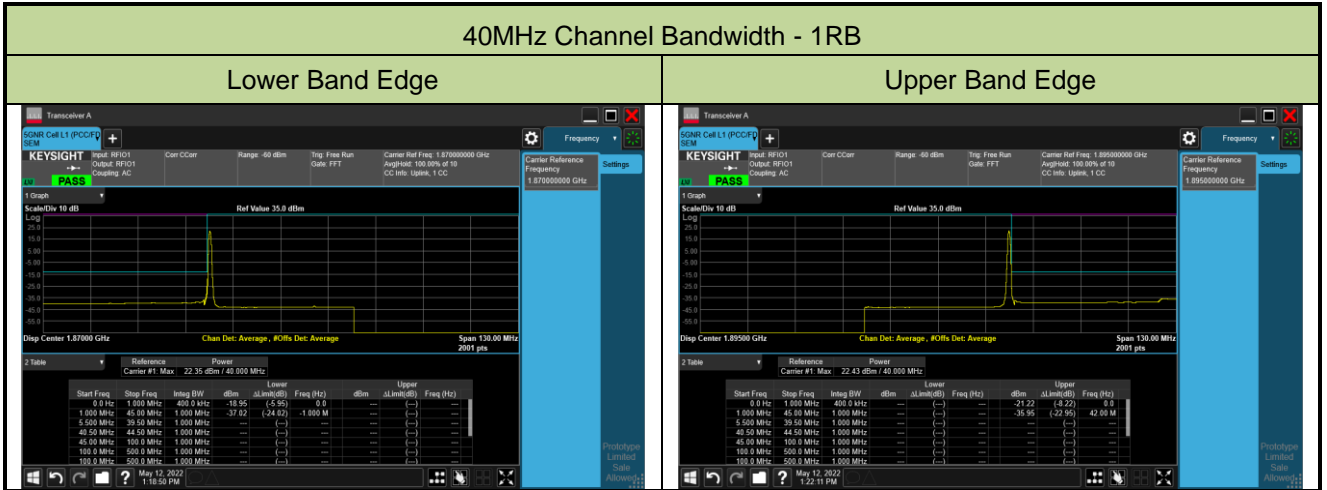
### 30MHz Channel Bandwidth - 1RB

#### Lower Band Edge



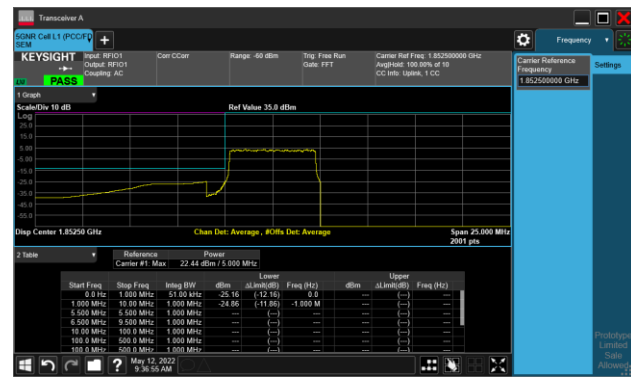
#### Upper Band Edge



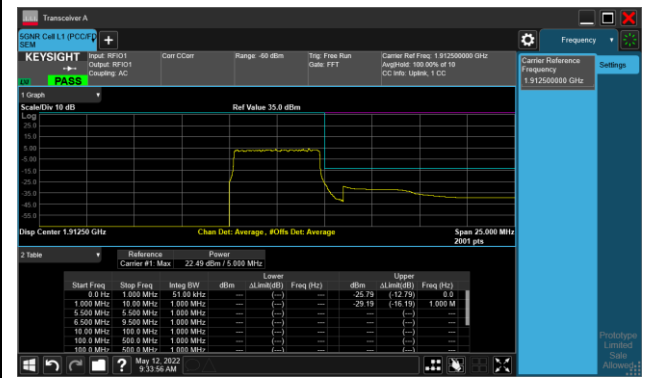


### 5MHz Channel Bandwidth - Full RB

#### Lower Band Edge

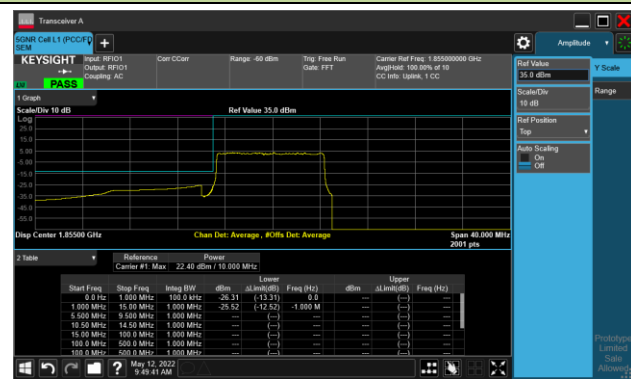


#### Upper Band Edge

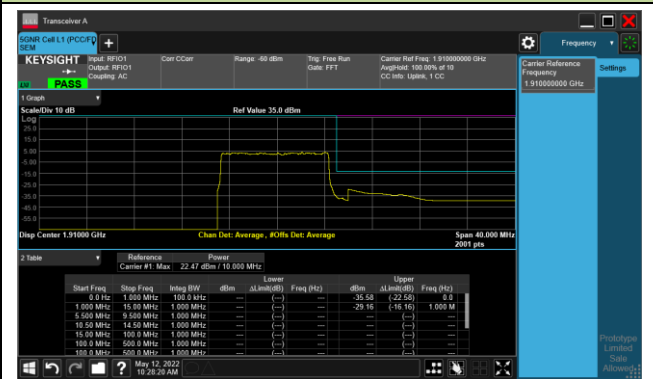


### 10MHz Channel Bandwidth - Full RB

#### Lower Band Edge

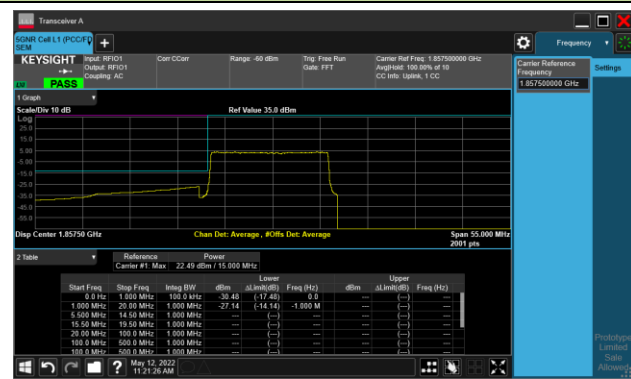


#### Upper Band Edge

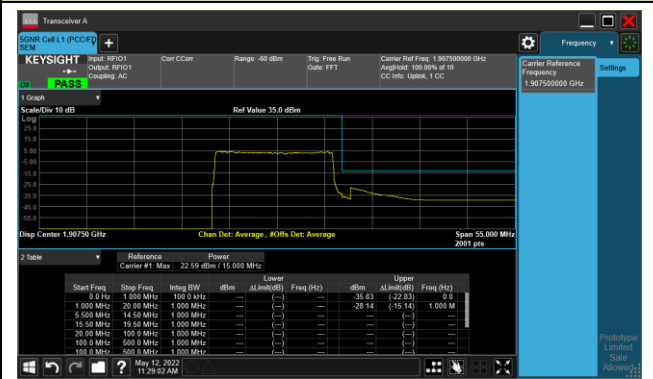


### 15MHz Channel Bandwidth - Full RB

#### Lower Band Edge

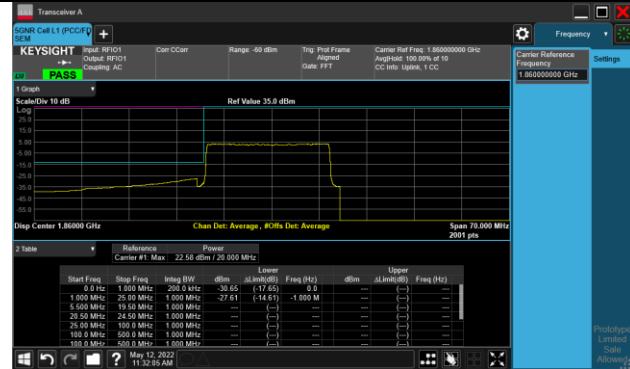


#### Upper Band Edge

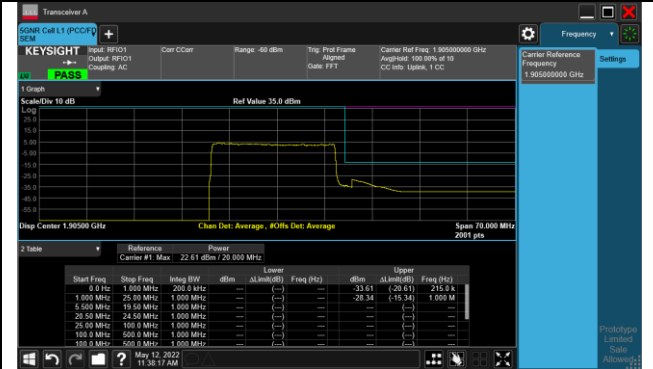


### 20MHz Channel Bandwidth - Full RB

#### Lower Band Edge

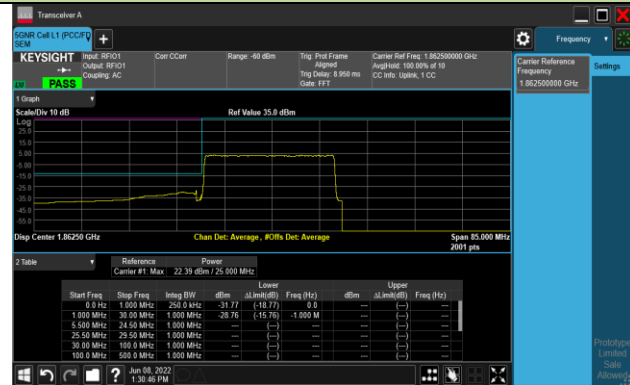


#### Upper Band Edge

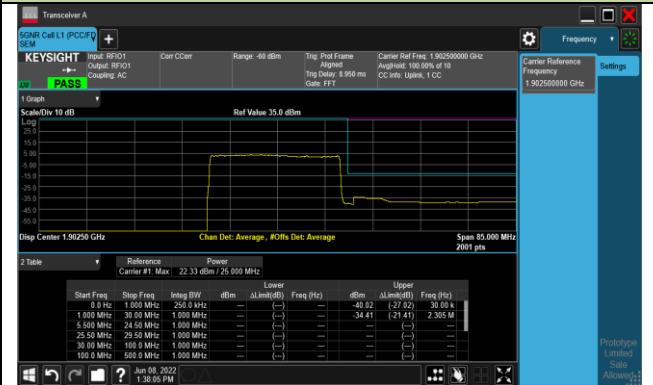


### 25MHz Channel Bandwidth - Full RB

#### Lower Band Edge

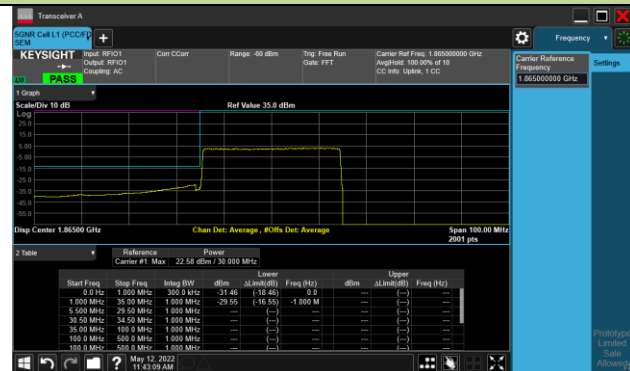


#### Upper Band Edge

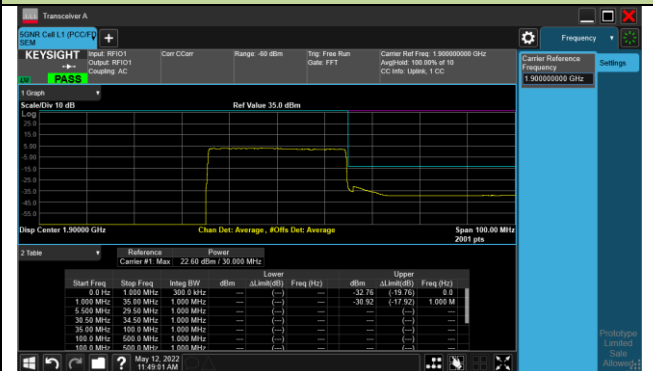


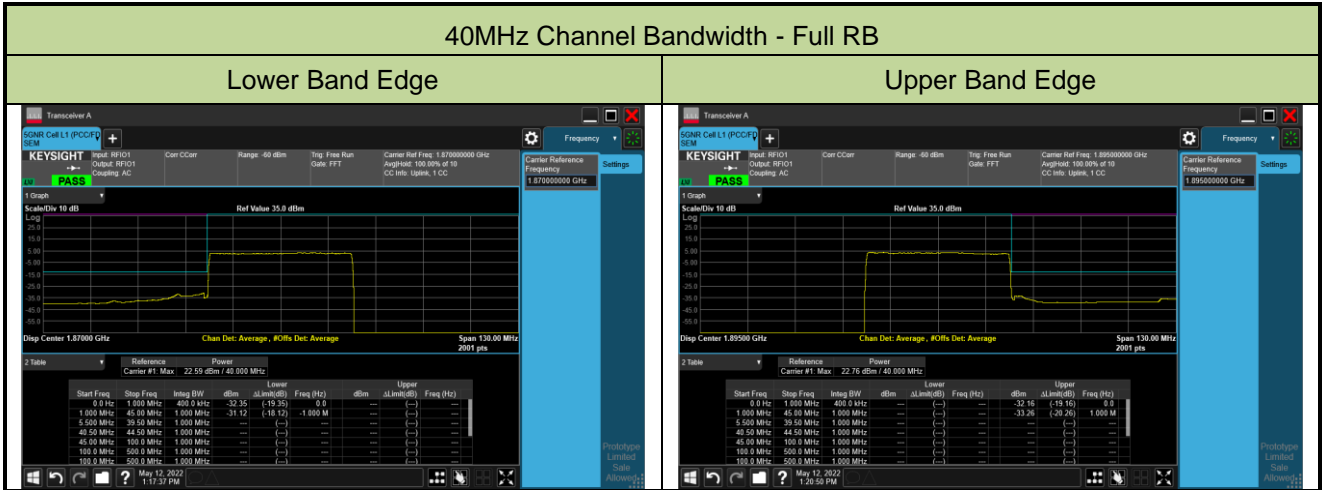
### 30MHz Channel Bandwidth - Full RB

#### Lower Band Edge



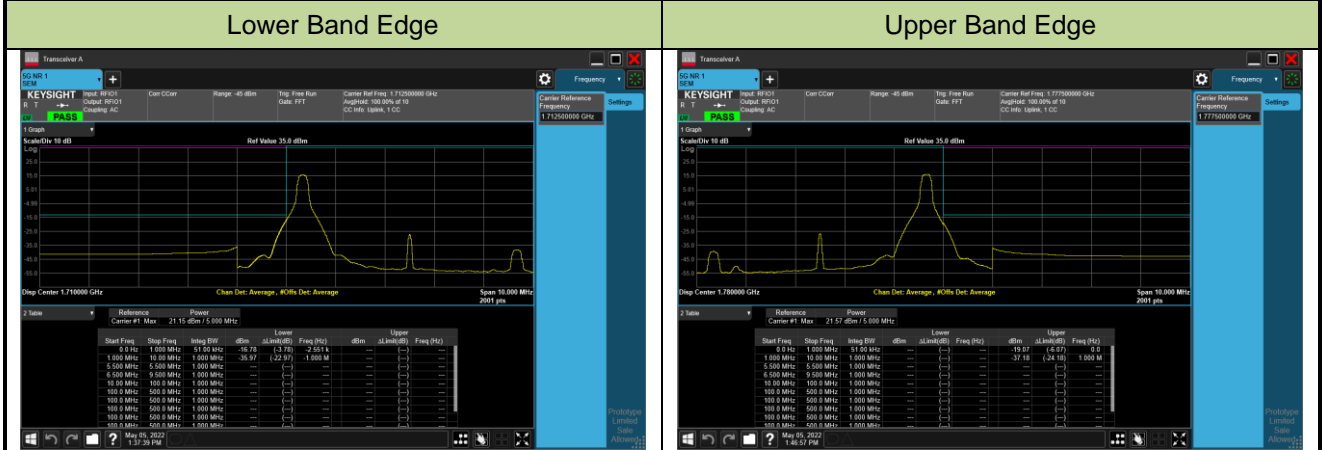
#### Upper Band Edge



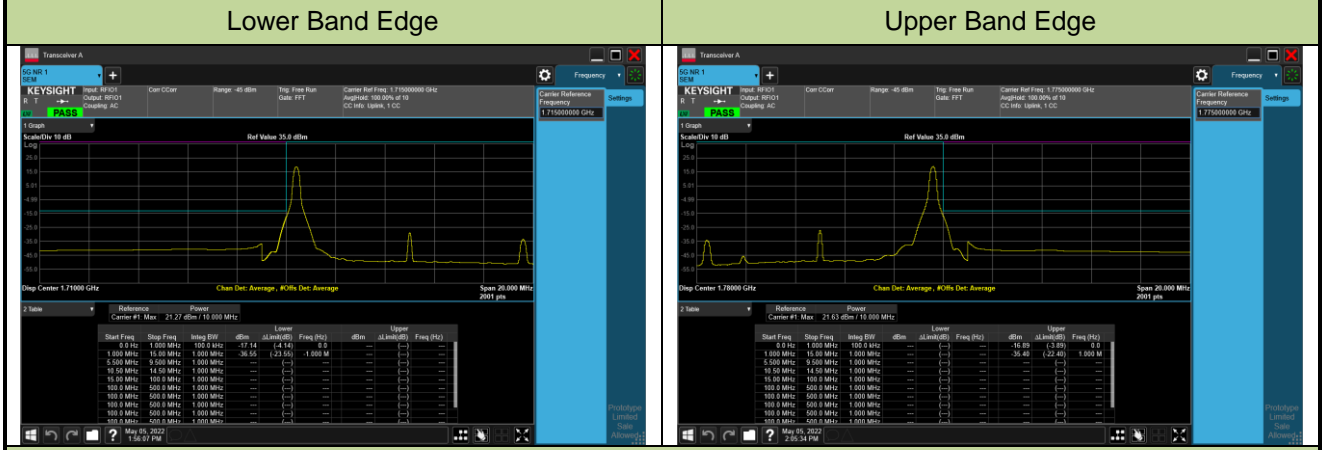


Test Site	SIP-SR1	Test Engineer	Candy Luo
Test Date	2022/05/05	Test Band	n66_SA

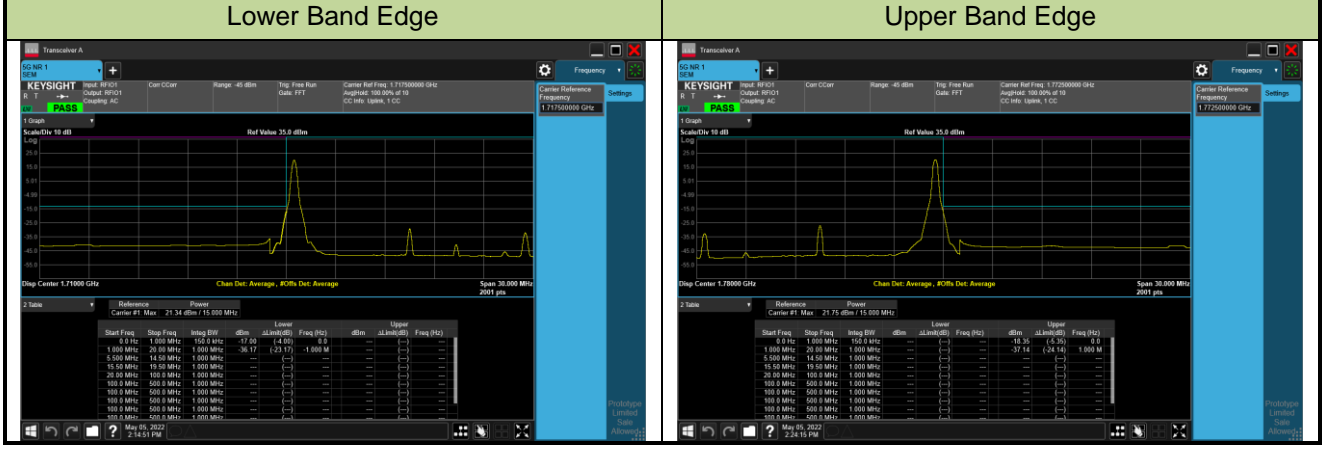
### 5MHz Channel Bandwidth - 1RB



### 10MHz Channel Bandwidth - 1RB



### 15MHz Channel Bandwidth - 1RB





20MHz Channel Bandwidth - 1RB

Lower Band Edge

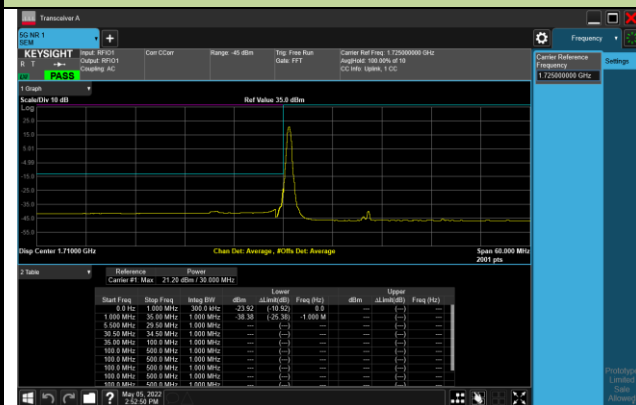


Upper Band Edge



30MHz Channel Bandwidth - 1RB

Lower Band Edge



Upper Band Edge

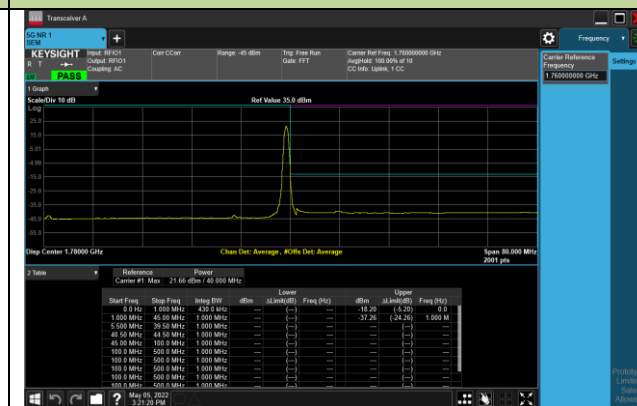


40MHz Channel Bandwidth - 1RB

Lower Band Edge



Upper Band Edge



5MHz Channel Bandwidth - Full RB

Lower Band Edge

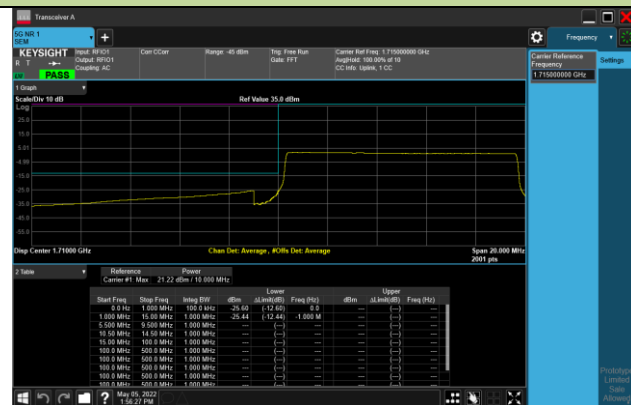


Upper Band Edge



10MHz Channel Bandwidth - Full RB

Lower Band Edge

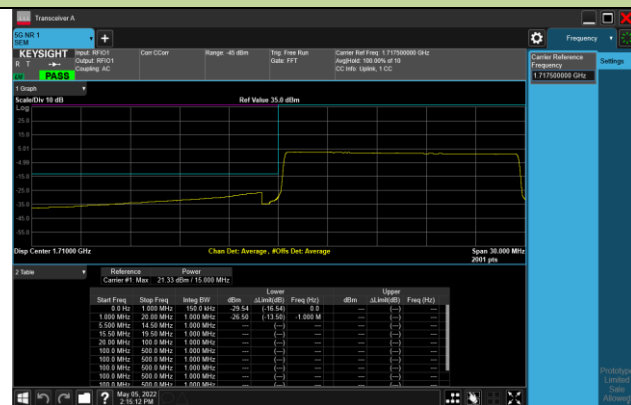


Upper Band Edge



15MHz Channel Bandwidth - Full RB

Lower Band Edge



Upper Band Edge

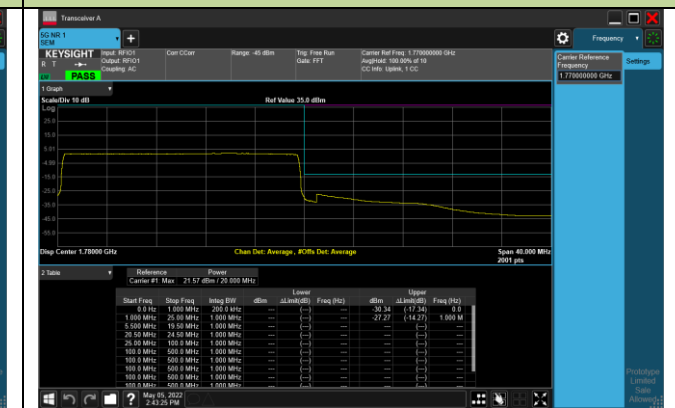


### 20MHz Channel Bandwidth - Full RB

#### Lower Band Edge

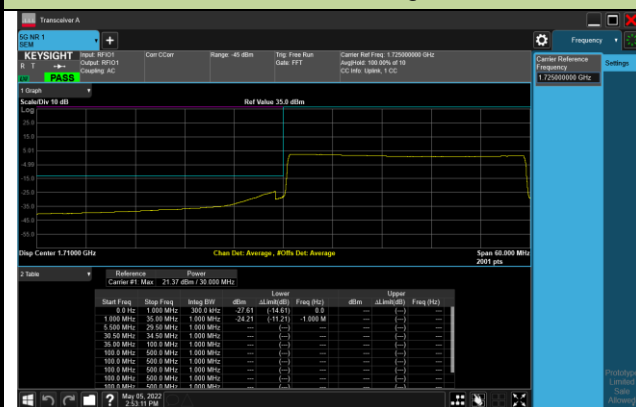


#### Upper Band Edge



### 30MHz Channel Bandwidth - Full RB

#### Lower Band Edge

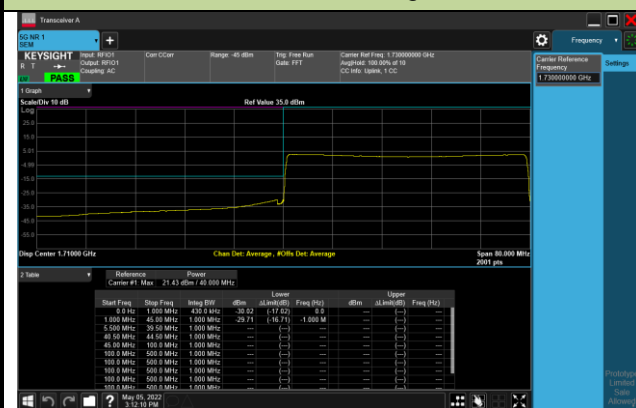


#### Upper Band Edge



### 40MHz Channel Bandwidth - Full RB

#### Lower Band Edge



#### Upper Band Edge

