

Statement

We **Quectel Wireless Solutions Co., Ltd** declare the following models.

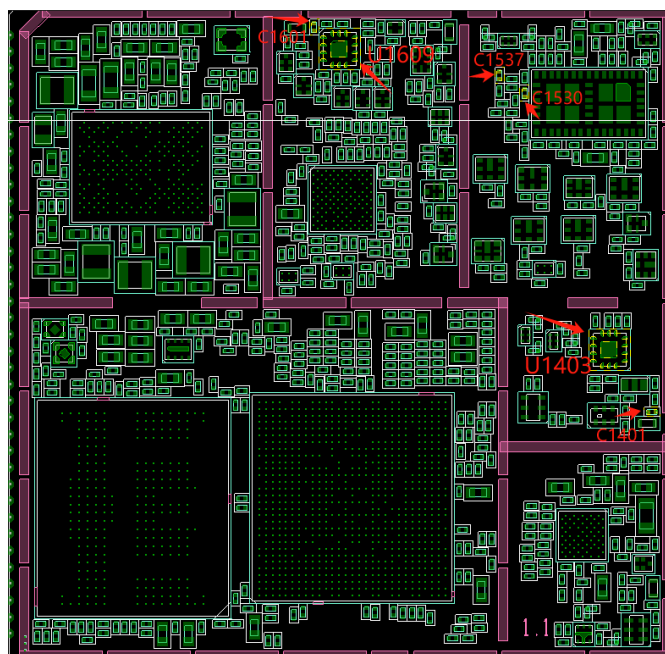
Product Name: Multi-mode Smart LTE Module

Model Number: SC206E-NA

Hardware Version: R1.0

There is no HW and SW design changes, it just changes the RF switch chips of cellular in U1403 and U1609 to a new vendor, and the resistance, capacitance and inductance values are adjusted according to the RF performance requirements.

- **PCB Layout**



R1.0

- **HW Difference Table**

Module	Designator	Original chip	New chip
SC206E-NA R1.0	U1403, U1609	VC1618V	RR13108-41H
	C1401	NM	33NH
	C1601	NM	18NH
	C1530	NM	2.7PF
	C1537	15NH	NM

These changes won't impact the RF performance for same frequency.

Your assistance on this matter is highly appreciated.

Name/Surname:

Position/Title: Certification Manager

Issue Date: May 15,2025