



# MPE TEST REPORT

**Applicant**      Quectel Wireless Solutions Co., Ltd  
**FCC ID**          XMR201907BC66NA  
**Product**        NB-IoT Module  
**Brand**           Quectel  
**Model**          BC66-NA  
**Marketing**      Quectel BC66-NA  
**Report No.**     R1906A0274-M1V1  
**Issue Date**    July 19, 2019

TA Technology (Shanghai) Co., Ltd. tested the above equipment in accordance with the requirements in **FCC 47 CFR Part 1 1.1310**. The test results show that the equipment tested is capable of demonstrating compliance with the requirements as documented in this report.

*Performed by: Yu Wang*

*Approved by: Guangchang Fan*

**TA Technology (Shanghai) Co., Ltd.**

*No.145, Jintang Rd, Tangzhen Industry Park, Pudong Shanghai, China*

*TEL: +86-021-50791141/2/3*

*FAX: +86-021-50791141/2/3-8000*



## Table of Contents

1	Test Laboratory.....	3
1.1	Notes of the Test Report .....	3
1.2	Test facility .....	3
1.3	Testing Location.....	4
1.4	Laboratory Environment.....	4
2	Description of Equipment under Test.....	5
3	Maximum conducted output power (measured) and antenna Gain .....	6
4	Test Result .....	7
	ANNEX A: The EUT Appearance .....	11
	A.1 EUT Appearance .....	11

# 1 Test Laboratory

## 1.1 Notes of the Test Report

This report shall not be reproduced in full or partial, without the written approval of **TA technology (shanghai) co., Ltd.** The results documented in this report apply only to the tested sample, under the conditions and modes of operation as described herein. Measurement Uncertainties were not taken into account and are published for informational purposes only. This report is written to support regulatory compliance of the applicable standards stated above.

## 1.2 Test facility

### **FCC (Designation number: CN1179, Test Firm Registration Number: 446626)**

TA Technology (Shanghai) Co., Ltd. has been listed on the US Federal Communications Commission list of test facilities recognized to perform electromagnetic emissions measurements.

### **IC (recognition number is 8510A)**

TA Technology (Shanghai) Co., Ltd. has been listed by industry Canada to perform electromagnetic emission measurement.

### **VCCI (recognition number is C-4595, T-2154, R-4113, G-10766)**

TA Technology (Shanghai) Co., Ltd. has been listed by industry Japan to perform electromagnetic emission measurement.

### **A2LA (Certificate Number: 3857.01)**

TA Technology (Shanghai) Co., Ltd. has been listed by American Association for Laboratory Accreditation to perform electromagnetic emission measurement.

### 1.3 Testing Location

Company: TA Technology (Shanghai) Co., Ltd.  
Address: No.145, Jintang Rd, Tangzhen Industry Park, Pudong Shanghai, China  
City: Shanghai  
Post code: 201201  
Country: P. R. China  
Contact: Xu Kai  
Telephone: +86-021-50791141/2/3  
Fax: +86-021-50791141/2/3-8000  
Website: <http://www.ta-shanghai.com>  
E-mail: [xukai@ta-shanghai.com](mailto:xukai@ta-shanghai.com)

### 1.4 Laboratory Environment

Temperature	Min. = 18°C, Max. = 25 °C
Relative humidity	Min. = 30%, Max. = 70%
Ground system resistance	< 0.5 $\Omega$
Ambient noise is checked and found very low and in compliance with requirement of standards. Reflection of surrounding objects is minimized and in compliance with requirement of standards.	

## 2 Description of Equipment under Test

### Client Information

<b>Applicant</b>	Quectel Wireless Solutions Co., Ltd
<b>Applicant address</b>	7th Floor, Hongye Building, No.1801 Hongmei Road, Xuhui District, Shanghai 200233, China
<b>Manufacturer</b>	Quectel Wireless Solutions Co., Ltd
<b>Manufacturer address</b>	7th Floor, Hongye Building, No.1801 Hongmei Road, Xuhui District, Shanghai 200233, China

### General Technologies

<b>Model</b>	BC66-NA
<b>IMEI</b>	863405040003730
<b>Hardware Version</b>	R1.0
<b>Software Version</b>	BC66NADAR01A01
<b>Date of Testing:</b>	June 13, 2019~ July 3, 2019

### 3 Maximum conducted output power (measured) and antenna Gain

The numeric gain (G) of the antenna with a gain specified in dB is determined by

Numeric gain (G)=10^(antenna gain/10)

Band	Maximum Conducted Output Power (dBm)	
	(dBm)	(mW)
NB-IOT Band 2	25.00	316.228
NB-IOT Band 4	25.00	316.228
NB-IOT Band 5	25.00	316.228
NB-IOT Band 12	25.00	316.228
NB-IOT Band 13	25.00	316.228
NB-IOT Band 17	25.00	316.228
NB-IOT Band 25	25.00	316.228
NB-IOT Band 66	25.00	316.228
NB-IOT Band 71	25.00	316.228
NB-IOT Band 85	25.00	316.228

## 4 Test Result

According to section 1.1310 of FCC 47 CFR Part 1, limits for maximum permissible exposure (MPE) are as following

TABLE 1 – LIMITS FOR MAXIMUM PERMISSIBLE EXPOSURE (MPE)

Frequency Range (MHz)	Electric Field Strength (V/m)	Magnetic Field Strength (A/m)	Power Density (mW/cm <sup>2</sup> )	Averaging Time (minutes)
(A) Limits for Occupational/Controlled Exposures				
0.3-3.0 .....	614	1.63	*(100)	6
3-30 .....	1842/f	4.89/f	*(900/f <sup>2</sup> )	6
30-300 .....	61.4	0.163	1.0	6
300-1500 .....			f/300	6
1500-100,000 .....			5	6
(B) Limits for General Population/Uncontrolled Exposure				
0.3-1.34 .....	614	1.63	*(100)	30
1.34-30 .....	824/f	2.19/f	*(180/f <sup>2</sup> )	30
30-300 .....	27.5	0.073	0.2	30
300-1500 .....			f/1500	30
1500-100,000 .....			1.0	30

f = frequency in MHz

\* = Plane-wave equivalent power density

Note1: Occupational/controlled limits apply in situations in which persons are exposed as a consequence of their employment provided those persons are fully aware of the potential for exposure and can exercise control over their exposure. Limits for occupational/controlled exposure also apply in situations when an individual is transient through a location where occupational / controlled limits apply provided he or she is made aware of the potential for exposure.

Note2: General population/uncontrolled exposures apply in situations in which the general public may be exposed, or in which persons that are exposed as a consequence of their employment may not be fully aware of the potential for exposure or can not exercise control over their exposure.



The maximum permissible exposure for 300~1500 MHz is  $f/1500$ , for 1500~100,000MHz is 1.0. So

Band	The maximum permissible exposure
NB-IOT Band 2	$1.0\text{mW}/\text{cm}^2$
NB-IOT Band 4	$1.0\text{mW}/\text{cm}^2$
NB-IOT Band 5	$0.55\text{mW}/\text{cm}^2$
NB-IOT Band 12	$0.47\text{mW}/\text{cm}^2$
NB-IOT Band 13	$0.52\text{mW}/\text{cm}^2$
NB-IOT Band 17	$0.47\text{ mW}/\text{cm}^2$
NB-IOT Band 25	$1.0\text{mW}/\text{cm}^2$
NB-IOT Band 66	$1.0\text{mW}/\text{cm}^2$
NB-IOT Band 71	$0.44\text{ mW}/\text{cm}^2$
NB-IOT Band 85	$0.47\text{mW}/\text{cm}^2$



Band	Maximum Conducted Output Power (dBm)	EIRP limit (dBm)	Margin1 (dB)	Power density Limit		Margin2 (dB)	Final Margin (dB)
				(mW/cm <sup>2</sup> )	(dBm)		
NB-IOT Band 2	25.00	33.000	8.000	1.000	37.013	12.013	8.000
NB-IOT Band 4	25.00	30.000	5.000	1.000	37.013	12.013	5.000
NB-IOT Band 5	25.00	40.600	15.600	0.550	34.416	9.416	9.416
NB-IOT Band 12	25.00	36.920	11.920	0.470	33.734	8.734	8.734
NB-IOT Band 13	25.00	36.920	11.920	0.520	34.173	9.173	9.173
NB-IOT Band 17	25.00	36.920	11.920	0.470	33.734	8.734	8.734
NB-IOT Band 25	25.00	33.000	8.000	1.000	37.013	12.013	8.000
NB-IOT Band 66	25.00	30.000	5.000	1.000	37.013	12.013	5.000
NB-IOT Band 71	25.00	36.920	11.920	0.440	33.447	8.447	8.447
NB-IOT Band 85	25.00	36.920	11.920	0.470	33.734	8.734	8.734

Note: 1. The Maximum allowed antenna gain per Band should be less than or equal to the **Final Margin** which is the allowable maximum gain value to comply with limits for maximum permissible exposure (MPE).

2. The Final Margin is determined and selected to the worst-case of Margin1 and Margin2.

3. Margin1=EIRP Limit(dBm)-Maximum Conducted Power (dBm). EIRP limit reference standard part22/ part24/part27and part90 for each band, EIRP = ERP + 2.15 (dB).

4. Margin2=Power density Limit(dBm)-Maximum Conducted Power (dBm). Power density Limit(dBm): The max. obtained by MPE with 20cm.

**IMPORTANT NOTE:** To comply with the FCC RF exposure compliance requirements, the antenna(s) used for this transmitter must be installed to provide a separation distance of at least 20 cm from all persons and must not be co-located or operating in conjunction with any other antenna or transmitter. No change to the antenna or the device is permitted. Any change to the antenna or the device could result in the device exceeding the RF exposure requirements and void user's authority to operate the device.

**RF Exposure Calculations:**

The following information provides the minimum separation distance for the highest gain antenna provided. This calculation is based on the conducted power, considering maximum power and antenna gain. The formula shown in KDB 447498 D01 is used in the calculation.

Equation from KDB 447498 D01 General RF Exposure Guidance v06 (10/23/2015) is:

$$S = PG / 4\pi R^2$$

Where: S = power density (in appropriate units, e.g. mW/cm<sup>2</sup>)

P = Time-average maximum tune up procedure (in appropriate units, e.g., mW)

G = the numeric gain of the antenna

R = distance to the center of radiation of the antenna (20 cm = limit for MPE)

Band	PG (mW)	Test Result (mW/cm <sup>2</sup> )	Limit Value (mW/cm <sup>2</sup> )	Conclusion
NB-IOT Band 2	1995.262	0.397	1.000	Pass
NB-IOT Band 4	1000.000	0.199	1.000	Pass
NB-IOT Band 5	2764.394	0.550	0.550	Pass
NB-IOT Band 12	2362.653	0.470	0.470	Pass
NB-IOT Band 13	2613.966	0.520	0.520	Pass
NB-IOT Band 17	2362.653	0.470	0.470	Pass
NB-IOT Band 25	1995.262	0.397	1.000	Pass
NB-IOT Band 66	1000.000	0.199	1.000	Pass
NB-IOT Band 71	2211.566	0.440	0.440	Pass
NB-IOT Band 85	2362.653	0.470	0.470	Pass
Note: R = 20cm $\pi = 3.1416$ The MPE ratio = Mac Test Result ÷ Limit Value				

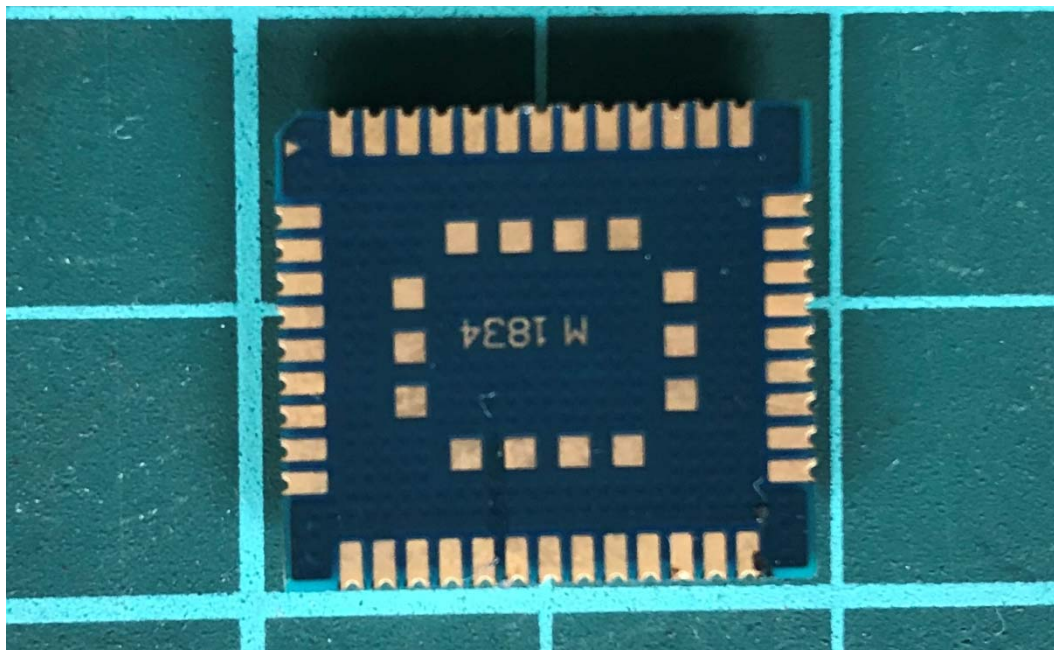
Note: For transmitters, minimum separation distance is 20cm, even if calculations indicate MPE distance is less.

## ANNEX A: The EUT Appearance

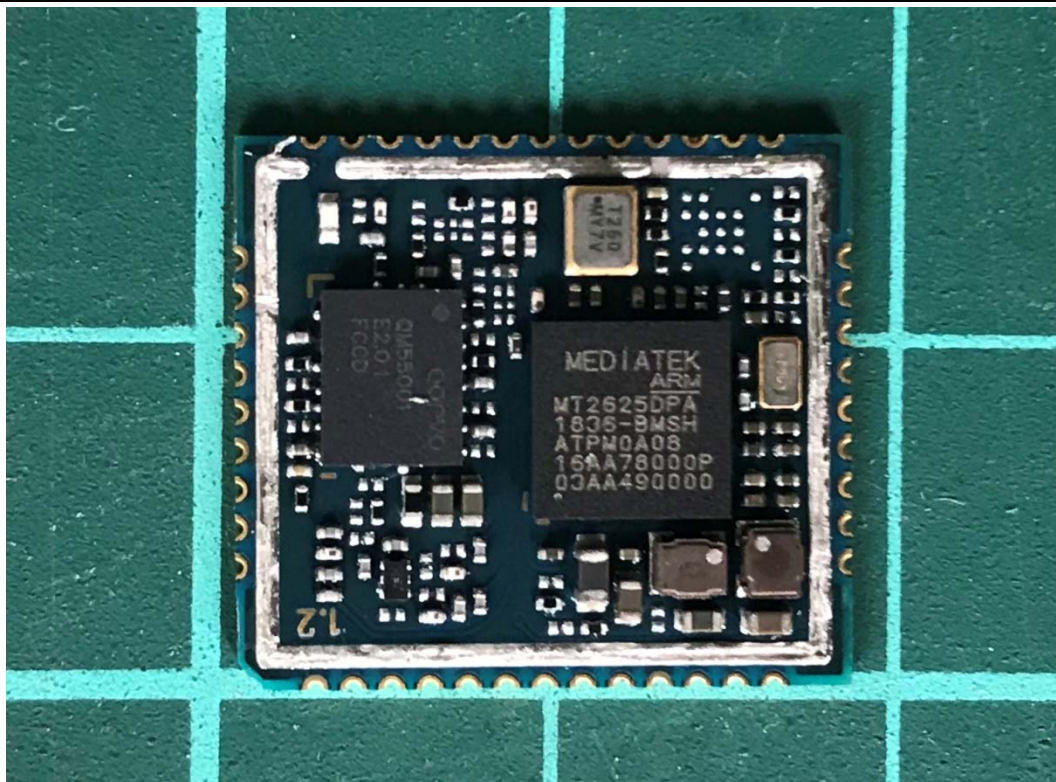
### A.1 EUT Appearance



Front Side



Back Side



Unshielded

a: EUT

Picture 1 EUT