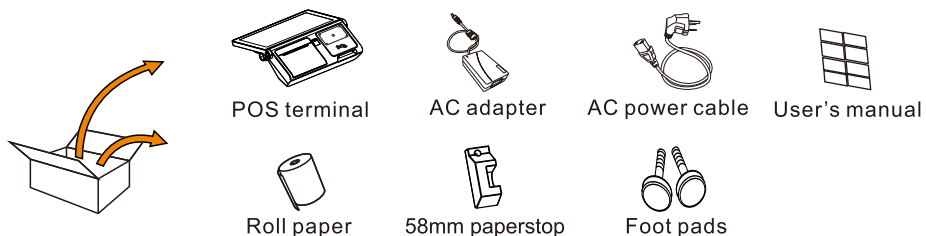
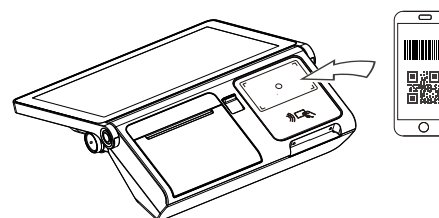


Touch POS Terminal (Brief introduction)

Unpacking

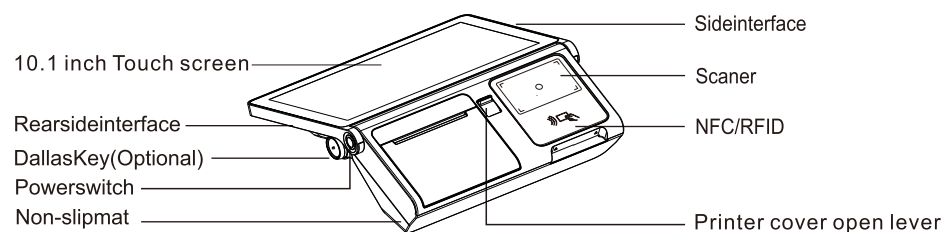


Scanner

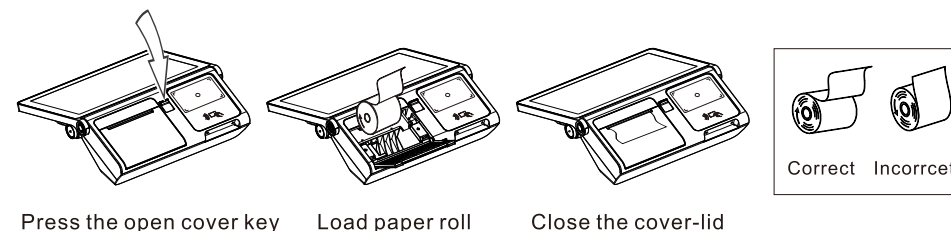


The scanner is support the scanning of one-dimensional bar code and QRcode. The recommended scanning distance is 5 to 20 cm, please adjust the mobile phone brightness while scanning.

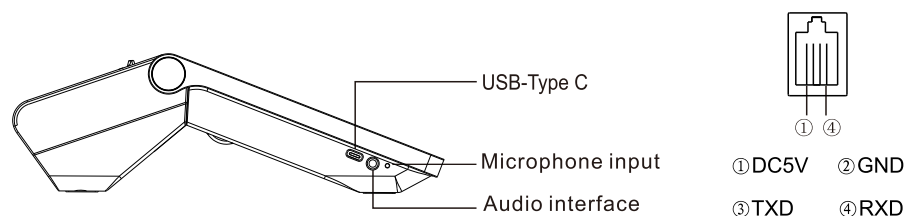
Product introduction



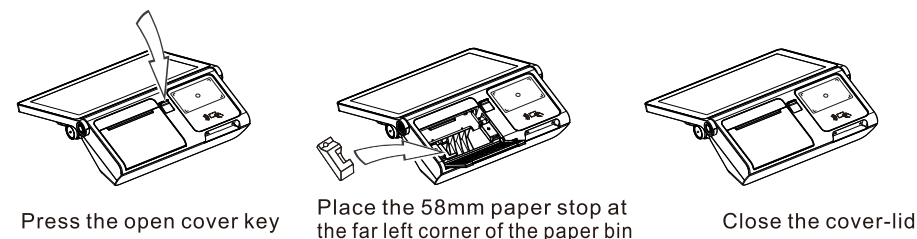
Printer Usage



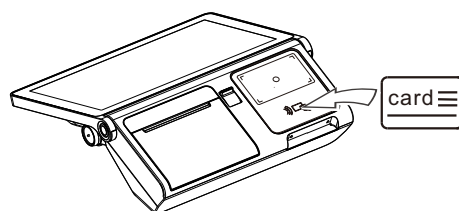
Introduction to Side Interface and Serial Port Definition



58mm paper stop Usage



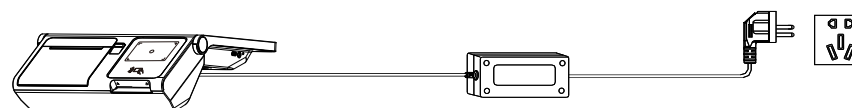
RFID / NFC



Support ISO14443 TYPE A standard, Mifare standard card, the module integrates instructions such as automatic card searching, reading, writing, initializing e-wallet, adding value, reducing value, checking balance, etc. The recommended swiping distance is 0 to 2 cm.

Power on/off

- ① Thread the power plug from the bottom of the machine;
- ② Insert the output head of power adapter into the power port of the machine;
- ③ Insert the other end of the adapter into the electrical socket for power supply;



The descriptions and images involved are subject to the actual product in the box. This information is for reference only. If there is any change, no notice will be given.

VERSION: EN1.2



2204174

FCC Caution.

This device complies with part 15 of the FCC Rules. Operation is subject to the following two conditions:

(1) This device may not cause harmful interference, and

(2) this device must accept any interference received, including interference that may cause undesired operation.

Any Changes or modifications not expressly approved by the party responsible for compliance could void the user's authority to operate the equipment.

Note: This equipment has been tested and found to comply with the limits for a Class B digital device, pursuant to part 15 of the FCC Rules. These limits are designed to provide reasonable protection against harmful interference in a residential installation. This equipment generates uses and can radiate radio frequency energy and, if not installed and used in accordance with the instructions, may cause harmful interference to radio communications. However, there is no guarantee that interference will not occur in a particular installation. If this equipment does cause harmful interference to radio or television reception, which can be determined by turning the equipment off and on, the user is encouraged to try to correct the interference by one or more

- of the following measures:
- Reorient or relocate the receiving antenna.
 - Increase the separation between the equipment and receiver.
 - Connect the equipment into an outlet on a circuit different from that to which the receiver is connected.
 - Consult the dealer or an experienced radio/TV technician for help.

Specific Absorption Rate (SAR) information:

This device meets the government's requirements for exposure to radio waves. The guidelines are based on standards that were developed by independent scientific organizations through periodic and thorough evaluation of scientific studies. The standards include a substantial safety margin designed to assure the safety of all persons regardless of age or health. FCC RF Exposure Information and Statement the SAR limit of USA (FCC) is 1.6 W/kg averaged over one gram of tissue. Device types: Touch POS Terminal (FCC ID: XDQEF60-02) has also been tested against this SAR limit. This device was tested for typical body-worn operations with the back of the device kept 0mm from the body. To maintain compliance with FCC RF exposure requirements, use accessories that maintain a 0mm separation distance between the user's body and the back of the Touch POS Terminal. The use of belt clips, holsters and similar accessories should not contain metallic components in its assembly. The use of accessories that do not satisfy these requirements may not comply with FCC RF exposure requirements, and should be avoided.

WARRANTY CARD

Product model		Serial number	
Sales date		Invoice number	
Distributor		Postal code	
Telephone			
Address			
Customer name		Postal code	
Telephone			
Address			

Warranty content:

.....

After-sale statement:

.....

- [Warranty period]
- The warranty period duration is one year after the day of purchase.
- [Warranty Clauses]
- 1.During this time period,if there is any deficiency caused by quality or usage,customers should present the guarantee card to Local authorized distributors or dealers to have free charge maintenance services according to the stipulated warranty clauses.
 - 2.Free charge maintenance service will not be provided for below circumstances:
 - ① Absence of the valid guarantee card originally issued by local authorized distributors or dealers.
 - ② Logo missed,obliteration on the warranty card.
 - ③ The product model and the serial number does not match the product model and the serial number on product surface.
 - ④ The defects or damages caused by force majeure.
 - ⑤ The defects or damages caused by transportation or transit,taking in water.
 - ⑥ The defects or damages are arising from incorrect usage,incorrect handling accidental lost,abuse,accident,negligence and damages caused directly or indirectly by Customer.
 - ⑦ The defects or damages caused by disassemble,repair or configure by customer or unauthorized maintenance service.
 - ⑧ The consumable parts are not covered by this warranty(such as printer head,ribbon,ribbon box,etc.)
 - ⑨ Damage caused by using unqualified consumable parts.
 - ⑩ Damage caused by plug or unplug the cable while the machine power on.
 - 3.The defective product shall be delivered to the designated services centre together with the warranty card and the freight cost will be on customers account.
 - 4.Please keep this warranty card safely on your hand otherwise we do not have the responsibility to reissue the warranty card.