

Prüfbericht - Nr.:
Test Report No.:

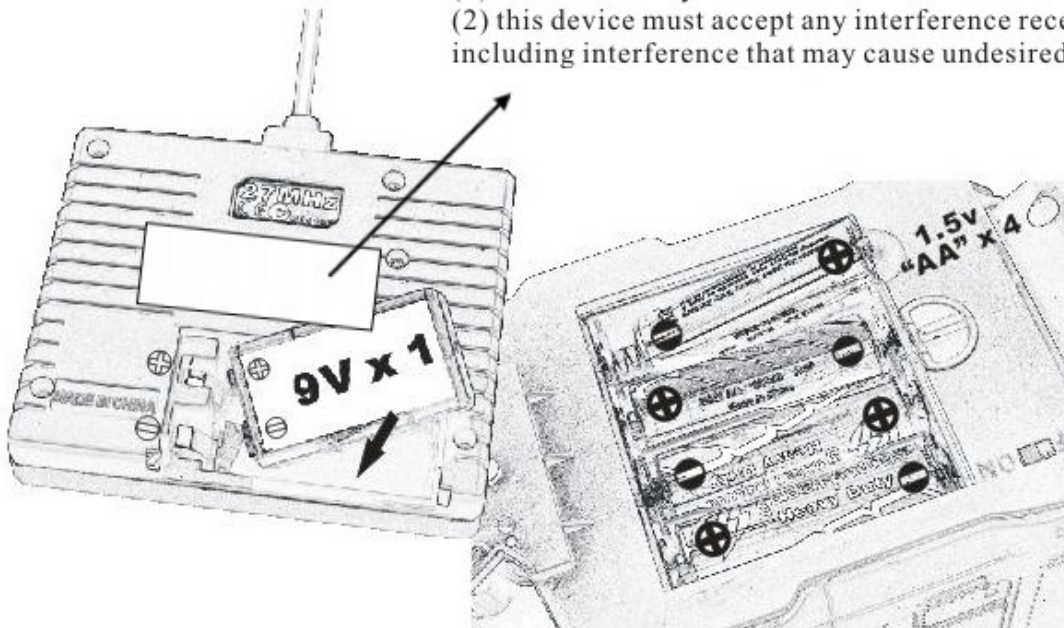
14021147 001

Seite 4 von 8
Page 4 of 8

FCC label and location

FCC ID XCHBT1030L

This device complies with Part 15 of the FCC rules.
Operation is subject to the following two conditions:
(1) this device may not cause harmful interference, and
(2) this device must accept any interference received,
including interference that may cause undesired operation.



Warning: Changes or modifications not expressly approved by the party responsible for compliance could void the user's authority to operate the equipment.

Requires 4 "AA" batteries and 1 "9V" battery (not included).
Do not mix old and new batteries. Do not mix alkaline,
standard (carbon-zinc) or rechargeable (nickel-cadmium) batteries.
IMPORTANT: Be sure that the batteries are installed correctly.
Wrong polarity may damage the unit.
Install batteries according to the instructions included with this product.
Only the recommended batteries or equivalent are to be used.
Remove exhausted batteries from the product. Do not use rechargeable batteries.