



Product Family Declaration – B650 and B650W

To Whom It May Concern:

We, Alltek Marine Electronics Corp., located at 14F-2, No.237, Sec. 1, Datong Rd., Xizhi District, New Taipei City, Taiwan, R.O.C., as the design and manufacturer of AIS Class B SOTDMA Transponder models B650 and B650W, declare that B650 is identical with B650W for PCB layout, components and housing, besides the Wi-Fi function.

The Wi-Fi function of B650W comes from Wi-Fi module integration by FCC ID: WZ7-W151 and IC ID: 9547A-W151.

The photos of B650 and B650W are shown at Appendix hereafter.

Authorized Signature by

A handwritten signature in black ink, appearing to read 'Leo Hsieh', written over a horizontal line.

Leo Hsieh / Assistant Manager

Jul. 18th, 2025

Alltek Marine Electronics Corp.



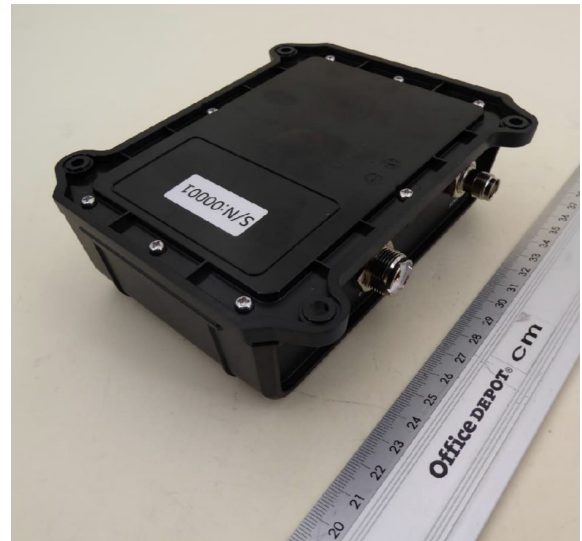
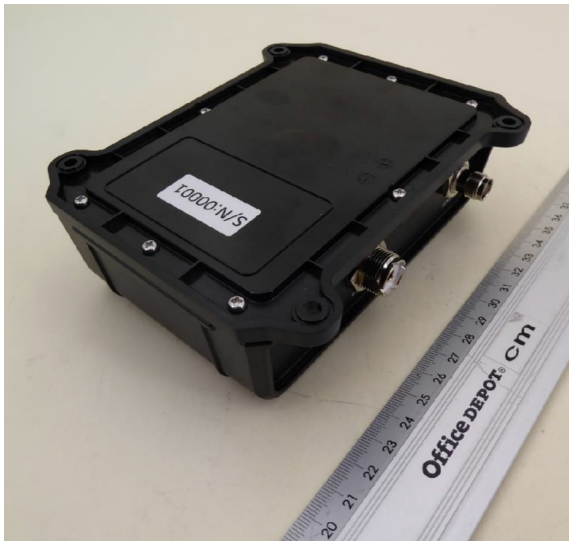
Appendix:

1. External Photos

B650



B650W



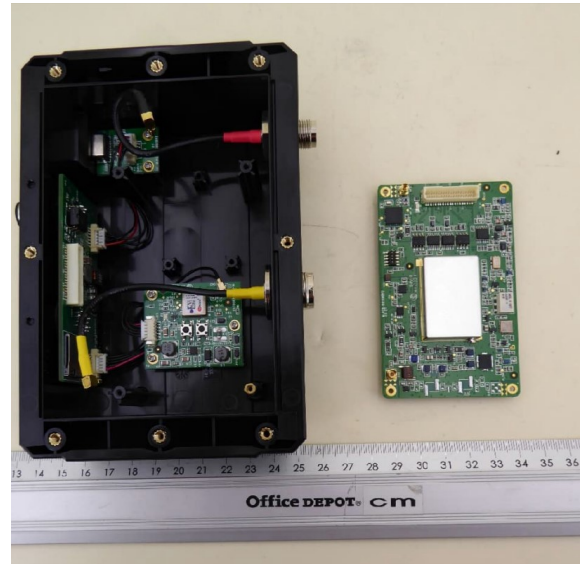
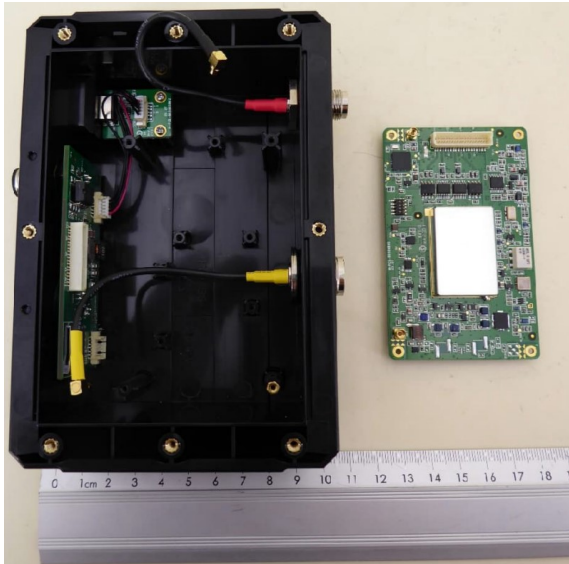


2. Internal Photos

B650



B650W



Alltek Marine Electronics Corp

◆ 14F-2, No.237, Sec. 1, Datong Rd., Xizhi Dist., New Taipei City, Taiwan, 22161 ◆ www.alltkmarine.com