

User manual

Model: Z0003NI

CONTENT

Part 1 Style figure

Part 2 Product Features and Specification

Part 3 Statement

Manufacturer: Faurecia Clarion Electronics (Xiamen) Co., Ltd.

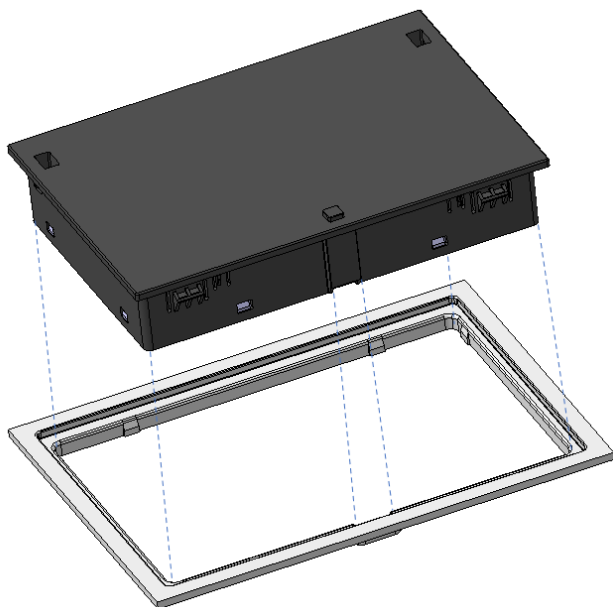
Address: 6F, No. 40, Guanri Road, Software Park Stage II, Xiamen,
China

Part 1 Style figure

1.1 Appearance diagram

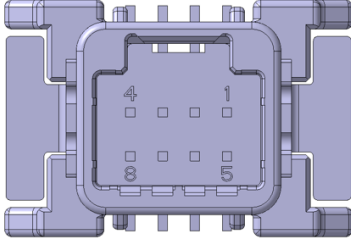


1.2 Installation diagram



Fitting force < 70N

1.3 Pin definition

Pin N°	Description	Tyco:1939403-3
C1	APC+	
C2	CAN+	
C3	(Spare)	
C4	GND	
C5	LED_GND	
C6	CAN-	
C7	LED_GREEN	
C8	LED_ORANGE	

Part 2 Product Features and Sepcification

Feature	Characteristics	Sepcification
Wireless Charging (WPC)	Standard	WPC Ver 1.3
	Max. Received Power	15W
	Max. Efficiency	70% in the Center
	Charging Distance	<4.5 mm (To the rubber mat surface)
	Operating Frequency	120 kHz
	Coil Type	Single Pattern Coil
Mechanical	Size (mm)	136mm x 95mm
	Weight (g)	240 g
NFC	NFC card detection	ISO14443A, ISO14443B, ISO15693 and FeliCa™ ISO 18092 (NFCIP-1) Active P2P
	Operating Frequency	13.56 MHz
EMC/EMF	EMC Regulation	ECE R10.05
	EMF	ICNIRP1998
Electrical	Operating Voltage	9V ~ 16V 12V (Design Voltage)
	Maximum Current	3.89A
	Stand by Current	≤ 130 mA
Temperature	Operating Temp.	-30 ~ 60°C
	Thermal Shutdown @ Surface	60°C
	Foreign Object Detection (FOD)	Support: Q factor and Power loss detection
	Cooling	Passive Cooling
SW	Architecture	AutoSAR 4.3.0
Updating	SW Update	via CAN

Part 3 Statement

warning

The parts must be installed by Plant, can't be assembly by Ending Customer.

FCC warning: This device complies with part 15 of the FCC Rules. Operation is subject to the following two conditions : (1) This device may not cause harmful interference, and (2) this device must accept any interference received, including interference that may cause undesired operation.

CE warning: The distance between user and products should be no less than 20cm.

- 15.105(b):

NOTE: This equipment has been tested and found to comply with the limits for a Class B digital device, pursuant to part 15 of the FCC Rules. These limits are designed to provide a reasonable protection against harmful interference in a residential installation. This equipment generates uses and can radiate radio frequency energy and, if not installed and used in accordance with the instructions, may cause harmful interference to radio communications. However, there is no guarantee that interference will not occur in a particular installation. If this equipment does cause harmful interference to radio or television reception, which can be determined by turning the equipment off and on, the user is encouraged to try to correct the interference by one or more of the following measures:

- Reorient or relocate the receiving antenna.
- Increase the separation between the equipment and receiver.
- Connect the equipment into an outlet on a circuit different from that to which the receiver is connected.
- Consult the dealer or an experienced radio/TV technician for help.

- FCC Part 15.21 information for user

You are cautioned that changes or modifications not expressly approved by the party responsible for compliance could void your authority to operate the equipment.