

System Check_Head_835MHz_090514**DUT: Dipole 835 MHz**

Communication System: CW; Frequency: 835 MHz; Duty Cycle: 1:1

Medium: HSL_850_090514 Medium parameters used: $f = 835$ MHz; $\sigma = 0.896$ mho/m; $\epsilon_r = 41.3$; $\rho = 1000$ kg/m³

Ambient Temperature : 22.5 ; Liquid Temperature : 21.4

DASY4 Configuration:

- Probe: ET3DV6 - SN1788; ConvF(6.55, 6.55, 6.55); Calibrated: 2008/9/23
- Sensor-Surface: 4mm (Mechanical Surface Detection)
- Electronics: DAE4 Sn778; Calibrated: 2008/9/22
- Phantom: SAM-Right; Type: QD 000 P40 C; Serial: TP-1383
- Measurement SW: DASY4, V4.7 Build 80; Postprocessing SW: SEMCAD, V1.8 Build 186

Pin=100mW/Area Scan (61x61x1): Measurement grid: dx=15mm, dy=15mm

Maximum value of SAR (interpolated) = 0.950 mW/g

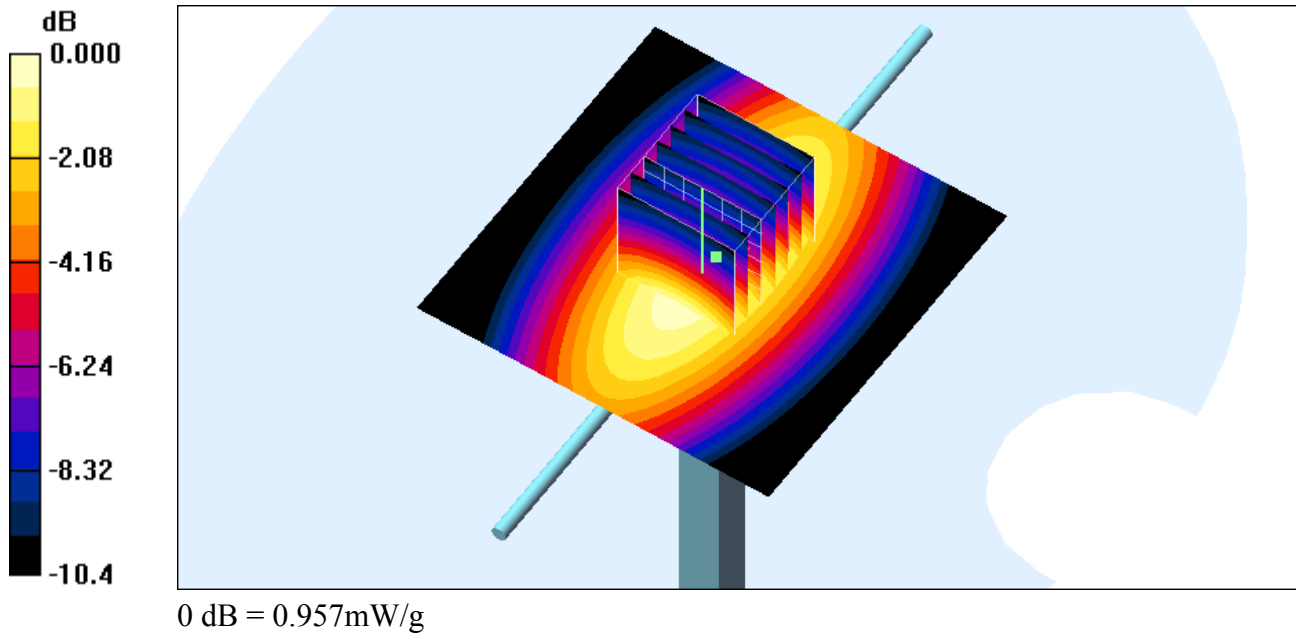
Pin=100mW/Zoom Scan (7x7x7)/Cube 0: Measurement grid: dx=5mm, dy=5mm, dz=5mm

Reference Value = 34.6 V/m; Power Drift = -0.092 dB

Peak SAR (extrapolated) = 1.22 W/kg

SAR(1 g) = 0.882 mW/g; SAR(10 g) = 0.584 mW/g

Maximum value of SAR (measured) = 0.957 mW/g



System Check_Head_1900MHz_090514**DUT: Dipole 1900 MHz**

Communication System: CW; Frequency: 1900 MHz; Duty Cycle: 1:1

Medium: HSL_1900_090514 Medium parameters used: $f = 1900$ MHz; $\sigma = 1.43$ mho/m; $\epsilon_r = 39$; $\rho = 1000$ kg/m³

Ambient Temperature : 22.3 ; Liquid Temperature : 21.5

DASY4 Configuration:

- Probe: EX3DV3 - SN3514; ConvF(8.16, 8.16, 8.16); Calibrated: 2009/1/21
- Sensor-Surface: 4mm (Mechanical Surface Detection)
- Electronics: DAE3 Sn577; Calibrated: 2008/11/12
- Phantom: SAM-Left; Type: QD 000 P40 C; Serial: TP-1477
- Measurement SW: DASY4, V4.7 Build 80; Postprocessing SW: SEMCAD, V1.8 Build 186

Pin=100mW/Area Scan (61x61x1): Measurement grid: dx=15mm, dy=15mm

Maximum value of SAR (interpolated) = 4.72 mW/g

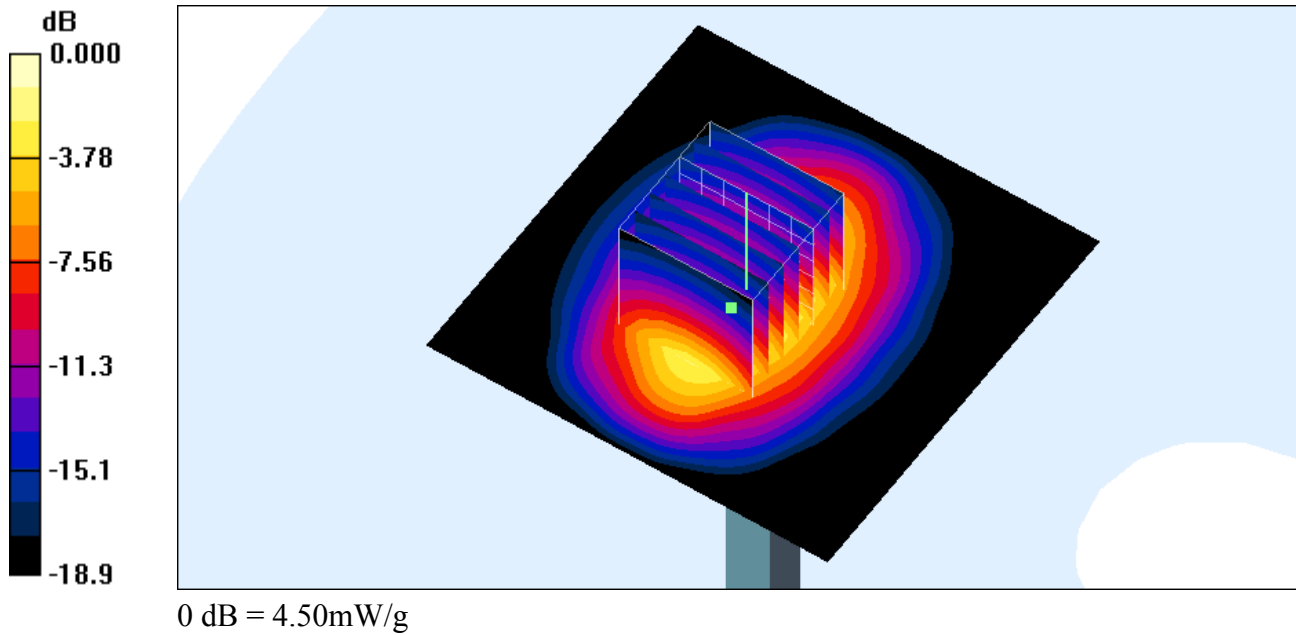
Pin=100mW/Zoom Scan (7x7x7)/Cube 0: Measurement grid: dx=5mm, dy=5mm, dz=5mm

Reference Value = 55.1 V/m; Power Drift = 0.057 dB

Peak SAR (extrapolated) = 7.75 W/kg

SAR(1 g) = 4.02 mW/g; SAR(10 g) = 2.04 mW/g

Maximum value of SAR (measured) = 4.50 mW/g



System Check_Body_835MHz_090519

DUT: Dipole 835 MHz

Communication System: CW; Frequency: 835 MHz; Duty Cycle: 1:1

Medium: MSL_850_090519 Medium parameters used: $f = 835$ MHz; $\sigma = 0.983$ mho/m; $\epsilon_r = 54.4$; $\rho = 1000$ kg/m³

Ambient Temperature : 22.4 °C; Liquid Temperature : 21.7 °C

DASY4 Configuration:

- Probe: EX3DV3 - SN3514; ConvF(9.41, 9.41, 9.41); Calibrated: 2009/1/21
- Sensor-Surface: 4mm (Mechanical Surface Detection)
- Electronics: DAE3 Sn577; Calibrated: 2008/11/12
- Phantom: SAM-Left; Type: QD 000 P40 C; Serial: TP-1477
- Measurement SW: DASY4, V4.7 Build 80; Postprocessing SW: SEMCAD, V1.8 Build 186

Pin=100mW/Area Scan (61x61x1): Measurement grid: dx=15mm, dy=15mm

Maximum value of SAR (interpolated) = 1.02 mW/g

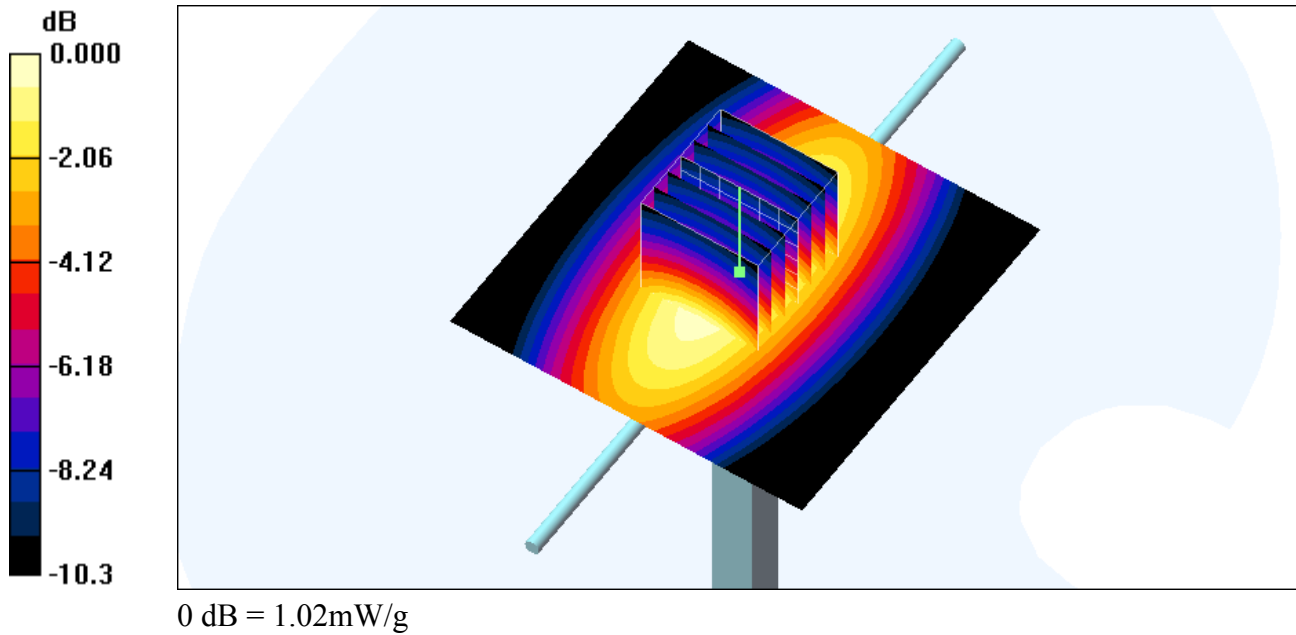
Pin=100mW/Zoom Scan (7x7x7)/Cube 0: Measurement grid: dx=5mm, dy=5mm, dz=5mm

Reference Value = 32.2 V/m; Power Drift = 0.005 dB

Peak SAR (extrapolated) = 1.46 W/kg

SAR(1 g) = 0.948 mW/g; SAR(10 g) = 0.616 mW/g

Maximum value of SAR (measured) = 1.02 mW/g



System Check_Body_1900MHz_090519

DUT: Dipole 1900 MHz

Communication System: CW; Frequency: 1900 MHz; Duty Cycle: 1:1

Medium: MSL_1900_090519 Medium parameters used: $f = 1900$ MHz; $\sigma = 1.55$ mho/m; $\epsilon_r = 52.1$; $\rho = 1000$ kg/m³

Ambient Temperature : 22.8 ; Liquid Temperature : 21.2

DASY4 Configuration:

- Probe: EX3DV3 - SN3514; ConvF(8.18, 8.18, 8.18); Calibrated: 2009/1/21
- Sensor-Surface: 4mm (Mechanical Surface Detection)
- Electronics: DAE3 Sn577; Calibrated: 2008/11/12
- Phantom: ELI 4.0_Front; Type: QDOVA001BB; Serial: 1026
- Measurement SW: DASY4, V4.7 Build 80; Postprocessing SW: SEMCAD, V1.8 Build 186

Pin=100mW/Area Scan (91x91x1): Measurement grid: dx=10mm, dy=10mm

Maximum value of SAR (interpolated) = 4.67 mW/g

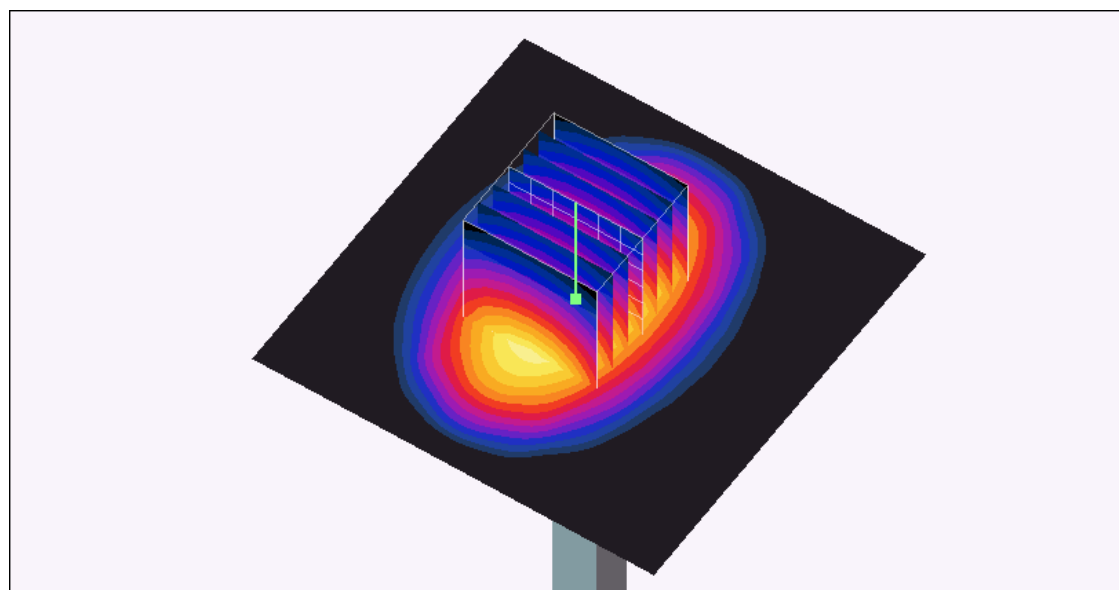
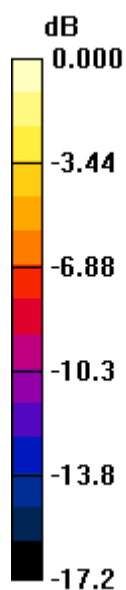
Pin=100mW/Zoom Scan (7x7x7)/Cube 0: Measurement grid: dx=5mm, dy=5mm, dz=5mm

Reference Value = 52.9 V/m; Power Drift = 0.022 dB

Peak SAR (extrapolated) = 7.56 W/kg

SAR(1 g) = 4.05 mW/g; SAR(10 g) = 2.09 mW/g

Maximum value of SAR (measured) = 4.57 mW/g



0 dB = 4.57mW/g