

# FCC SAR Test Report

APPLICANT : Brightstar Corporation  
EQUIPMENT : CDMA mobile phone  
BRAND NAME : Avvio  
MODEL NAME : Avvio C622  
FCC ID : WVBAC622X  
STANDARD : FCC 47 CFR Part 2 (2.1093)  
ANSI/IEEE C95.1-1992  
IEEE 1528-2013

We, SPORTON INTERNATIONAL (SHENZHEN) INC., would like to declare that the tested sample has been evaluated in accordance with the procedures and had been in compliance with the applicable technical standards.

The test results in this report apply exclusively to the tested model / sample. Without written approval of SPORTON INTERNATIONAL (SHENZHEN) INC., the test report shall not be reproduced except in full.



Prepared by: Mark Qu / Manager



Approved by: Jones Tsai / Manager



## **SPORTON INTERNATIONAL (SHENZHEN) INC.**

1F & 2F, Building A, Morning Business Center, No. 4003 ShiGu Rd., Xili Town,  
Nanshan District, Shenzhen, Guangdong, P. R. China



## **Table of Contents**

|   |           |
|---|-----------|
| <b>1. Statement of Compliance .....</b>               | <b>4</b>  |
| <b>2. Administration Data .....</b>                   | <b>5</b>  |
| <b>3. Guidance Standard .....</b>                     | <b>5</b>  |
| <b>4. Equipment Under Test (EUT) Information.....</b> | <b>6</b>  |
| 4.1 General Information .....                         | 6         |
| <b>5. RF Exposure Limits.....</b>                     | <b>7</b>  |
| 5.1 Uncontrolled Environment.....                     | 7         |
| 5.2 Controlled Environment.....                       | 7         |
| <b>6. Specific Absorption Rate (SAR).....</b>         | <b>8</b>  |
| 6.1 Introduction .....                                | 8         |
| 6.2 SAR Definition.....                               | 8         |
| <b>7. System Description and Setup .....</b>          | <b>9</b>  |
| 7.1 E-Field Probe .....                               | 10        |
| 7.2 Data Acquisition Electronics (DAE) .....          | 10        |
| 7.3 Phantom.....                                      | 11        |
| 7.4 Device Holder.....                                | 12        |
| <b>8. Measurement Procedures .....</b>                | <b>13</b> |
| 8.1 Spatial Peak SAR Evaluation.....                  | 13        |
| 8.2 Power Reference Measurement.....                  | 14        |
| 8.3 Area Scan .....                                   | 14        |
| 8.4 Zoom Scan.....                                    | 15        |
| 8.5 Volume Scan Procedures.....                       | 15        |
| 8.6 Power Drift Monitoring.....                       | 15        |
| <b>9. Test Equipment List.....</b>                    | <b>16</b> |
| <b>10. System Verification .....</b>                  | <b>17</b> |
| 10.1 Tissue Verification .....                        | 17        |
| 10.2 System Performance Check Results.....            | 18        |
| <b>11. RF Exposure Positions .....</b>                | <b>19</b> |
| 11.1 Ear and handset reference point .....            | 19        |
| 11.2 Definition of the cheek position.....            | 20        |
| 11.3 Definition of the tilt position.....             | 21        |
| 11.4 Body Worn Accessory .....                        | 22        |
| <b>12. Conducted RF Output Power (Unit: dBm).....</b> | <b>23</b> |
| <b>13. Antenna Location .....</b>                     | <b>24</b> |
| <b>14. SAR Test Results .....</b>                     | <b>25</b> |
| 14.1 Head SAR .....                                   | 26        |
| 14.2 Body Worn Accessory SAR.....                     | 26        |
| 14.3 Repeated SAR Measurement .....                   | 27        |
| <b>15. Uncertainty Assessment .....</b>               | <b>28</b> |
| <b>16. References.....</b>                            | <b>30</b> |
| <b>Appendix A. Plots of System Performance Check</b>  |           |
| <b>Appendix B. Plots of High SAR Measurement</b>      |           |
| <b>Appendix C. DASY Calibration Certificate</b>       |           |
| <b>Appendix D. Test Setup Photos</b>                  |           |

SPORTON INTERNATIONAL (SHENZHEN) INC.

## **1. Statement of Compliance**

The maximum results of Specific Absorption Rate (SAR) found during testing for **Brightstar Corporation, CDMA mobile phone, Avvio C622** are as follows.

| Equipment Class  | Wireless Operated | Highest SAR Summary      |                                |
|------------------|-------------------|--------------------------|--------------------------------|
|                  |                   | Head<br>(Separation 0mm) | Body-worn<br>(Separation 15mm) |
|                  |                   | 1g SAR (W/kg)            |                                |
| Licensed         | CDMA2000 BC0      | <b>0.48</b>              | <b>1.00</b>                    |
|                  | CDMA2000 BC1      | <b>1.13</b>              | <b>0.41</b>                    |
| Date of Testing: |                   | 2015/12/15 ~ 2015/12/16  |                                |

This device is in compliance with Specific Absorption Rate (SAR) for general population/uncontrolled exposure limits (1.6 W/kg) specified in FCC 47 CFR part 2 (2.1093) and ANSI/IEEE C95.1-1992, and had been tested in accordance with the measurement methods and procedures specified in IEEE 1528-2013 and FCC KDB publications.

## **2. Administration Data**

| Testing Laboratory |   |
|--------------------|---|
| Test Site          | SPORTON INTERNATIONAL (SHENZHEN) INC.   |
| Test Site Location | 1F & 2F, Building A, Morning Business Center, No. 4003 ShiGu Rd., Xili Town, Nanshan District, Shenzhen, Guangdong, P. R. China<br>TEL: +86-755-8637-9589<br>FAX: +86-755-8637-9595 |

| Applicant    |   |
|--------------|---|
| Company Name | Brightstar Corporation                                      |
| Address      | 9725 NW 117th Ave., Miami, Florida, FL 33178, United States |

| Manufacturer |   |
|--------------|---|
| Company Name | Lakia Networks Co., Ltd.  |
| Address      | 2F, Unit A, Technology Service Building, Software Garden 1, Xiamen, Fujian, China |

## **3. Guidance Standard**

The Specific Absorption Rate (SAR) testing specification, method, and procedure for this device is in accordance with the following standards:

- FCC 47 CFR Part 2 (2.1093)
- ANSI/IEEE C95.1-1992
- IEEE 1528-2013
- FCC KDB 865664 D01 SAR Measurement 100 MHz to 6 GHz v01r04
- FCC KDB 865664 D02 SAR Reporting v01r02
- FCC KDB 447498 D01 General RF Exposure Guidance v06
- FCC KDB 648474 D04 SAR Evaluation Considerations for Wireless Handsets v01r03
- FCC KDB 941225 D01 3G SAR Procedures v03r01

## **4. Equipment Under Test (EUT) Information**

### **4.1 General Information**

| Product Feature & Specification                 |  |
|---|--|
| Equipment Name                                  | CDMA mobile phone  |
| Brand Name                                      | Avvio  |
| Model Name                                      | Avvio C622   |
| FCC ID  | WVBAC622X  |
| MEID Code                                       | A100002107E097   |
| Wireless Technology and Frequency Range         | CDMA2000 BC0: 824.7 MHz ~ 848.31 MHz<br>CDMA 2000 BC1: 1851.25 MHz ~ 1908.75 MHz |
| Mode  | · CDMA2000 : 1xRTT   |
| HW Version                                      | MC6022 V1.2  |
| SW Version                                      | C622_V0.1.0  |
| EUT Stage                                       | Identical Prototype  |
| <b>Remark:</b>                                  |  |
| 1. This device not supported Hotspot operation. |  |

## **5. RF Exposure Limits**

### **5.1 Uncontrolled Environment**

Uncontrolled Environments are defined as locations where there is the exposure of individuals who have no knowledge or control of their exposure. The general population/uncontrolled exposure limits are applicable to situations in which the general public may be exposed or in which persons who are exposed as a consequence of their employment may not be made fully aware of the potential for exposure or cannot exercise control over their exposure. Members of the general public would come under this category when exposure is not employment-related; for example, in the case of a wireless transmitter that exposes persons in its vicinity.

### **5.2 Controlled Environment**

Controlled Environments are defined as locations where there is exposure that may be incurred by persons who are aware of the potential for exposure, (i.e. as a result of employment or occupation). In general, occupational/controlled exposure limits are applicable to situations in which persons are exposed as a consequence of their employment, who have been made fully aware of the potential for exposure and can exercise control over their exposure. The exposure category is also applicable when the exposure is of a transient nature due to incidental passage through a location where the exposure levels may be higher than the general population/uncontrolled limits, but the exposed person is fully aware of the potential for exposure and can exercise control over his or her exposure by leaving the area or by some other appropriate means.

**Limits for Occupational/Controlled Exposure (W/kg)**

| Whole-Body | Partial-Body | Hands, Wrists, Feet and Ankles |
|------------|--------------|--------------------------------|
| 0.4        | 8.0          | 20.0                           |

**Limits for General Population/Uncontrolled Exposure (W/kg)**

| Whole-Body | Partial-Body | Hands, Wrists, Feet and Ankles |
|------------|--------------|--------------------------------|
| 0.08       | 1.6          | 4.0                            |

1. Whole-Body SAR is averaged over the entire body, partial-body SAR is averaged over any 1gram of tissue defined as a tissue volume in the shape of a cube. SAR for hands, wrists, feet and ankles is averaged over any 10 grams of tissue defined as a tissue volume in the shape of a cube.

## **6. Specific Absorption Rate (SAR)**

### **6.1 Introduction**

SAR is related to the rate at which energy is absorbed per unit mass in an object exposed to a radio field. The SAR distribution in a biological body is complicated and is usually carried out by experimental techniques or numerical modeling. The standard recommends limits for two tiers of groups, occupational/controlled and general population/uncontrolled, based on a person's awareness and ability to exercise control over his or her exposure. In general, occupational/controlled exposure limits are higher than the limits for general population/uncontrolled.

### **6.2 SAR Definition**

The SAR definition is the time derivative (rate) of the incremental energy (dW) absorbed by (dissipated in) an incremental mass (dm) contained in a volume element (dv) of a given density (ρ). The equation description is as below:

$$SAR = \frac{d}{dt} \left( \frac{dW}{dm} \right) = \frac{d}{dt} \left( \frac{dW}{\rho dv} \right)$$

SAR is expressed in units of Watts per kilogram (W/kg)

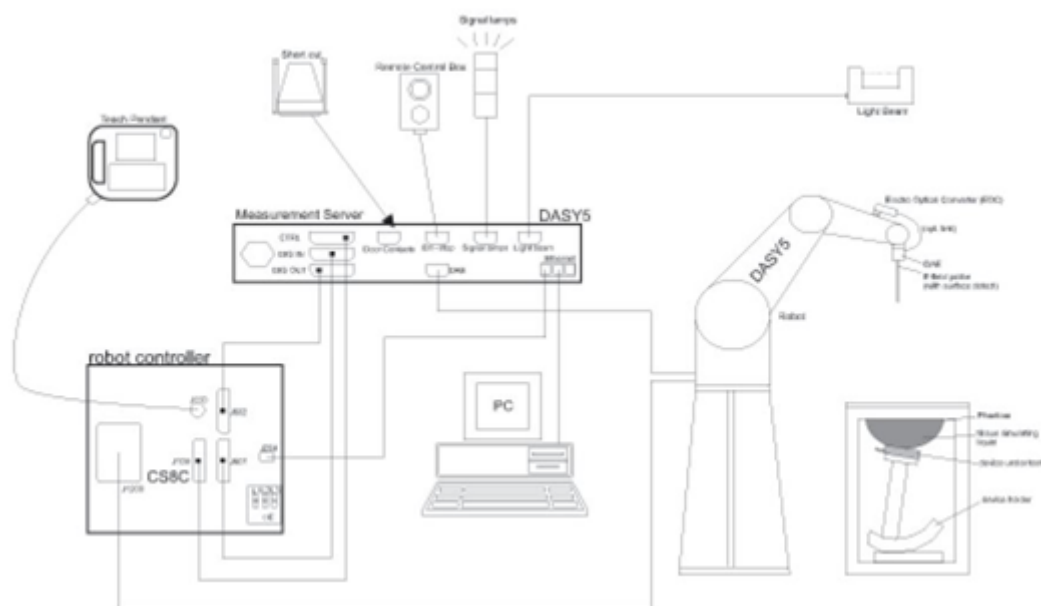
$$SAR = \frac{\sigma |E|^2}{\rho}$$

Where: σ is the conductivity of the tissue, ρ is the mass density of the tissue and E is the RMS electrical field strength.



## **7. System Description and Setup**

The DASY system used for performing compliance tests consists of the following items:




- A standard high precision 6-axis robot with controller, teach pendant and software. An arm extension for accommodating the data acquisition electronics (DAE).
- An isotropic Field probe optimized and calibrated for the targeted measurement.
- A data acquisition electronics (DAE) which performs the signal amplification, signal multiplexing, AD-conversion, offset measurements, mechanical surface detection, collision detection, etc. The unit is battery powered with standard or rechargeable batteries. The signal is optically transmitted to the EOC.
- The Electro-optical converter (EOC) performs the conversion from optical to electrical signals for the digital communication to the DAE. To use optical surface detection, a special version of the EOC is required. The EOC signal is transmitted to the measurement server.
- The function of the measurement server is to perform the time critical tasks such as signal filtering, control of the robot operation and fast movement interrupts.
- The Light Beam used is for probe alignment. This improves the (absolute) accuracy of the probe positioning.
- A computer running WinXP or Win7 and the DASY5 software.
- Remote control and teach pendant as well as additional circuitry for robot safety such as warning lamps, etc.
- The phantom, the device holder and other accessories according to the targeted measurement.

## 7.1 E-Field Probe

The SAR measurement is conducted with the dosimetric probe (manufactured by SPEAG). The probe is specially designed and calibrated for use in liquid with high permittivity. The dosimetric probe has special calibration in liquid at different frequency. This probe has a built in optical surface detection system to prevent from collision with phantom.

### <EX3DV4 Probe>

|                      |   |  |
|----------------------|---|--|
| <b>Construction</b>  | Symmetric design with triangular core<br>Built-in shielding against static charges<br>PEEK enclosure material (resistant to organic solvents, e.g., DGBE) |  |
| <b>Frequency</b>     | 10 MHz – >6 GHz<br>Linearity: $\pm 0.2$ dB (30 MHz – 6 GHz)   |  |
| <b>Directivity</b>   | $\pm 0.3$ dB in TSL (rotation around probe axis)<br>$\pm 0.5$ dB in TSL (rotation normal to probe axis)   |  |
| <b>Dynamic Range</b> | 10 $\mu$ W/g – >100 mW/g<br>Linearity: $\pm 0.2$ dB (noise: typically <1 $\mu$ W/g)   |  |
| <b>Dimensions</b>    | Overall length: 337 mm (tip: 20 mm)<br>Tip diameter: 2.5 mm (body: 12 mm)<br>Typical distance from probe tip to dipole centers: 1 mm                      |  |

## 7.2 Data Acquisition Electronics (DAE)

The data acquisition electronics (DAE) consists of a highly sensitive electrometer-grade preamplifier with auto-zeroing, a channel and gain-switching multiplexer, a fast 16 bit AD-converter and a command decoder and control logic unit. Transmission to the measurement server is accomplished through an optical downlink for data and status information as well as an optical uplink for commands and the clock.

The input impedance of the DAE is 200 MOhm; the inputs are symmetrical and floating. Common mode rejection is above 80 dB.



**Fig 5.1 Photo of DAE**

### **7.3 Phantom**

#### **<SAM Twin Phantom>**

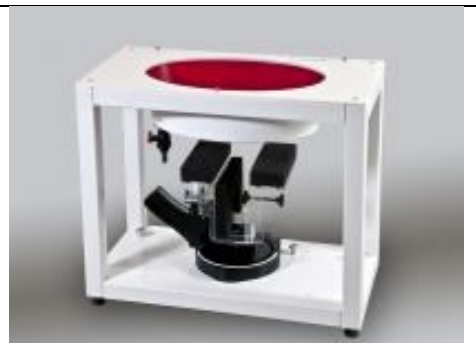
|                          |  |
|--------------------------|--|
| <b>Shell Thickness</b>   | 2 ± 0.2 mm;<br>Center ear point: 6 ± 0.2 mm                |
| <b>Filling Volume</b>    | Approx. 25 liters  |
| <b>Dimensions</b>        | Length: 1000 mm; Width: 500 mm; Height:<br>adjustable feet |
| <b>Measurement Areas</b> | Left Hand, Right Hand, Flat Phantom                        |



The bottom plate contains three pair of bolts for locking the device holder. The device holder positions are adjusted to the standard measurement positions in the three sections. A white cover is provided to tap the phantom during off-periods to prevent water evaporation and changes in the liquid parameters. On the phantom top, three reference markers are provided to identify the phantom position with respect to the robot.

#### **<ELI Phantom>**

|                        |  |
|------------------------|--|
| <b>Shell Thickness</b> | 2 ± 0.2 mm (sagging: <1%)                        |
| <b>Filling Volume</b>  | Approx. 30 liters                                |
| <b>Dimensions</b>      | Major ellipse axis: 600 mm<br>Minor axis: 400 mm |



The ELI phantom is intended for compliance testing of handheld and body-mounted wireless devices in the frequency range of 30 MHz to 6 GHz. ELI4 is fully compatible with standard and all known tissue simulating liquids.

## **7.4 Device Holder**

### **<Mounting Device for Hand-Held Transmitter>**

In combination with the Twin SAM V5.0/V5.0c or ELI phantoms, the Mounting Device for Hand-Held Transmitters enables rotation of the mounted transmitter device to specified spherical coordinates. At the heads, the rotation axis is at the ear opening. Transmitter devices can be easily and accurately positioned according to IEC 62209-1, IEEE 1528, FCC, or other specifications. The device holder can be locked for positioning at different phantom sections (left head, right head, flat). And upgrade kit to Mounting Device to enable easy mounting of wider devices like big smart-phones, e-books, small tablets, etc. It holds devices with width up to 140 mm.



Mounting Device for Hand-Held Transmitters



Mounting Device Adaptor for Wide-Phones

### **<Mounting Device for Laptops and other Body-Worn Transmitters>**

The extension is lightweight and made of POM, acrylic glass and foam. It fits easily on the upper part of the mounting device in place of the phone positioned. The extension is fully compatible with the SAM Twin and ELI phantoms.



Mounting Device for Laptops

## **8. Measurement Procedures**

The measurement procedures are as follows:

### **<Conducted power measurement>**

- (a) For WWAN power measurement, use base station simulator to configure EUT WWAN transmission in conducted connection with RF cable, at maximum power in each supported wireless interface and frequency band.
- (b) Read the WWAN RF power level from the base station simulator.

### **<SAR measurement>**

- (a) Use base station simulator to configure EUT WWAN transmission in radiated connection at maximum RF power, in the highest power channel.
- (b) Place the EUT in the positions as Appendix D demonstrates.
- (c) Set scan area, grid size and other setting on the DASY software.
- (d) Measure SAR results for the highest power channel on each testing position.
- (e) Find out the largest SAR result on these testing positions of each band
- (f) Measure SAR results for other channels in worst SAR testing position if the reported SAR of highest power channel is larger than 0.8 W/kg

According to the test standard, the recommended procedure for assessing the peak spatial-average SAR value consists of the following steps:

- (a) Power reference measurement
- (b) Area scan
- (c) Zoom scan
- (d) Power drift measurement

### **8.1 Spatial Peak SAR Evaluation**

The procedure for spatial peak SAR evaluation has been implemented according to the test standard. It can be conducted for 1g and 10g, as well as for user-specific masses. The DASY software includes all numerical procedures necessary to evaluate the spatial peak SAR value.

The base for the evaluation is a "cube" measurement. The measured volume must include the 1g and 10g cubes with the highest averaged SAR values. For that purpose, the center of the measured volume is aligned to the interpolated peak SAR value of a previously performed area scan.

The entire evaluation of the spatial peak values is performed within the post-processing engine (SEMCAD). The system always gives the maximum values for the 1g and 10g cubes. The algorithm to find the cube with highest averaged SAR is divided into the following stages:

- (a) Extraction of the measured data (grid and values) from the Zoom Scan
- (b) Calculation of the SAR value at every measurement point based on all stored data (A/D values and measurement parameters)
- (c) Generation of a high-resolution mesh within the measured volume
- (d) Interpolation of all measured values from the measurement grid to the high-resolution grid
- (e) Extrapolation of the entire 3-D field distribution to the phantom surface over the distance from sensor to surface
- (f) Calculation of the averaged SAR within masses of 1g and 10g

## **8.2 Power Reference Measurement**

The Power Reference Measurement and Power Drift Measurements are for monitoring the power drift of the device under test in the batch process. The minimum distance of probe sensors to surface determines the closest measurement point to phantom surface. This distance cannot be smaller than the distance of sensor calibration points to probe tip as defined in the probe properties.

## **8.3 Area Scan**

The area scan is used as a fast scan in two dimensions to find the area of high field values, before doing a fine measurement around the hot spot. The sophisticated interpolation routines implemented in DASY software can find the maximum found in the scanned area, within a range of the global maximum. The range (in dB) is specified in the standards for compliance testing. For example, a 2 dB range is required in IEEE standard 1528 and IEC 62209 standards, whereby 3 dB is a requirement when compliance is assessed in accordance with the ARIB standard (Japan), if only one zoom scan follows the area scan, then only the absolute maximum will be taken as reference. For cases where multiple maximums are detected, the number of zoom scans has to be increased accordingly.

Area scan parameters extracted from FCC KDB 865664 D01v01r04 SAR measurement 100 MHz to 6 GHz.

|  | $\leq 3$ GHz   | $> 3$ GHz  |
|--|--|--|
| Maximum distance from closest measurement point (geometric center of probe sensors) to phantom surface | $5 \pm 1$ mm   | $\frac{1}{2} \cdot \delta \cdot \ln(2) \pm 0.5$ mm     |
| Maximum probe angle from probe axis to phantom surface normal at the measurement location              | $30^\circ \pm 1^\circ$   | $20^\circ \pm 1^\circ$                                 |
| Maximum area scan spatial resolution: $\Delta x_{Area}$ , $\Delta y_{Area}$                            | $\leq 2$ GHz: $\leq 15$ mm<br>$2 - 3$ GHz: $\leq 12$ mm  | $3 - 4$ GHz: $\leq 12$ mm<br>$4 - 6$ GHz: $\leq 10$ mm |
|  | When the x or y dimension of the test device, in the measurement plane orientation, is smaller than the above, the measurement resolution must be $\leq$ the corresponding x or y dimension of the test device with at least one measurement point on the test device. |  |

### 8.4 Zoom Scan

Zoom scans are used to assess the peak spatial SAR values within a cubic averaging volume containing 1 gram and 10 gram of simulated tissue. The zoom scan measures points (refer to table below) within a cube whose base faces are centered on the maxima found in a preceding area scan job within the same procedure. When the measurement is done, the zoom scan evaluates the averaged SAR for 1 gram and 10 gram and displays these values next to the job's label.

Zoom scan parameters extracted from FCC KDB 865664 D01v01r04 SAR measurement 100 MHz to 6 GHz.

|   |   |   | $\leq 3$ GHz   | $> 3$ GHz   |
|---|---|---|--|---|
| Maximum zoom scan spatial resolution: $\Delta x_{\text{Zoom}}, \Delta y_{\text{Zoom}}$  |   |   | $\leq 2$ GHz: $\leq 8$ mm<br>2 – 3 GHz: $\leq 5$ mm* | 3 – 4 GHz: $\leq 5$ mm*<br>4 – 6 GHz: $\leq 4$ mm*                            |
| Maximum zoom scan spatial resolution, normal to phantom surface   | uniform grid: $\Delta z_{\text{Zoom}}(n)$ |   | $\leq 5$ mm  | 3 – 4 GHz: $\leq 4$ mm<br>4 – 5 GHz: $\leq 3$ mm<br>5 – 6 GHz: $\leq 2$ mm    |
|   | graded grid                               | $\Delta z_{\text{Zoom}}(1)$ : between 1 <sup>st</sup> two points closest to phantom surface | $\leq 4$ mm  | 3 – 4 GHz: $\leq 3$ mm<br>4 – 5 GHz: $\leq 2.5$ mm<br>5 – 6 GHz: $\leq 2$ mm  |
|   |   | $\Delta z_{\text{Zoom}}(n>1)$ : between subsequent points                                   | $\leq 1.5 \cdot \Delta z_{\text{Zoom}}(n-1)$         |   |
| Minimum zoom scan volume  | x, y, z                                   |   | $\geq 30$ mm   | 3 – 4 GHz: $\geq 28$ mm<br>4 – 5 GHz: $\geq 25$ mm<br>5 – 6 GHz: $\geq 22$ mm |
| Note: $\delta$ is the penetration depth of a plane-wave at normal incidence to the tissue medium; see draft standard IEEE P1528-2011 for details.   |   |   |  |   |
| * When zoom scan is required and the <i>reported</i> SAR from the <i>area scan based 1-g SAR estimation</i> procedures of KDB 447498 is $\leq 1.4$ W/kg, $\leq 8$ mm, $\leq 7$ mm and $\leq 5$ mm zoom scan resolution may be applied, respectively, for 2 GHz to 3 GHz, 3 GHz to 4 GHz and 4 GHz to 6 GHz. |   |   |  |   |

### 8.5 Volume Scan Procedures

The volume scan is used to assess overlapping SAR distributions for antennas transmitting in different frequency bands. It is equivalent to an oversized zoom scan used in standalone measurements. The measurement volume will be used to enclose all the simultaneous transmitting antennas. For antennas transmitting simultaneously in different frequency bands, the volume scan is measured separately in each frequency band. In order to sum correctly to compute the 1g aggregate SAR, the EUT remain in the same test position for all measurements and all volume scan use the same spatial resolution and grid spacing. When all volume scan were completed, the software, SEMCAD postprocessor can combine and subsequently superpose these measurement data to calculating the multiband SAR.

### 8.6 Power Drift Monitoring

All SAR testing is under the EUT install full charged battery and transmit maximum output power. In DASy measurement software, the power reference measurement and power drift measurement procedures are used for monitoring the power drift of EUT during SAR test. Both these procedures measure the field at a specified reference position before and after the SAR testing. The software will calculate the field difference in dB. If the power drifts more than 5%, the SAR will be retested.



## 9. Test Equipment List

| Manufacturer  | Name of Equipment               | Type/Model    | Serial Number | Calibration   |               |
|---------------|---------------------------------|---------------|---------------|---------------|---------------|
|               |                                 |               |               | Last Cal.     | Due Date      |
| SPEAG         | 835MHz System Validation Kit    | D835V2        | 4d200         | Aug. 20, 2015 | Aug. 19, 2016 |
| SPEAG         | 1900MHz System Validation Kit   | D1900V2       | 5d210         | Aug. 19, 2015 | Aug. 18, 2016 |
| SPEAG         | Data Acquisition Electronics    | DAE4          | 1386          | Feb. 19, 2015 | Feb. 18, 2016 |
| SPEAG         | Dosimetric E-Field Probe        | EX3DV4        | 3958          | Jul. 23, 2015 | Jul. 22, 2016 |
| SPEAG         | SAM Twin Phantom                | QD 000 P40 CD | TP-1670       | NCR           | NCR           |
| SPEAG         | Phone Positioner                | N/A           | N/A           | NCR           | NCR           |
| Agilent       | Wireless Communication Test Set | E5515C        | MY50267224    | Aug. 07, 2015 | Aug. 06, 2016 |
| R&S           | Network Analyzer                | ZVB8          | 100106        | Oct. 20, 2015 | Oct. 19, 2016 |
| Speag         | Dielectric Assessment KIT       | DAK-3.5       | 1032          | NCR           | NCR           |
| R&S           | Signal Generator                | SMBV100A      | 258305        | Jan. 23, 2015 | Jan. 22, 2016 |
| Anritsu       | Power Sensor                    | MA2411B       | 1207253       | Jan. 28, 2015 | Jan. 27, 2016 |
| Anritsu       | Power Meter                     | ML2495A       | 1218010       | Jan. 28, 2015 | Jan. 27, 2016 |
| Anritsu       | Power Sensor                    | MA2411B       | 917070        | Jan. 23, 2015 | Jan. 22, 2016 |
| Anritsu       | Power Meter                     | ML2495A       | 1005002       | Jan. 23, 2015 | Jan. 22, 2016 |
| R&S           | Spectrum Analyzer               | FSP7          | 101634        | Aug. 07, 2015 | Aug. 06, 2016 |
| AR            | Amplifier                       | 5S1G4         | 333096        | Note 1        |               |
| ARRA          | Power Divider                   | A3200-2       | N/A           | Note 1        |               |
| Agilent       | Dual Directional Coupler        | 778D          | 50422         | Note 1        |               |
| MCL           | Attenuation1                    | BW-S10W5      | N/A           | Note 1        |               |
| Weinschel     | Attenuation2                    | 3M-20         | N/A           | Note 1        |               |
| Zhongjilianhe | Attenuation3                    | MVE2214-03    | N/A           | Note 1        |               |

**General Note:**

- Prior to system verification and validation, the path loss from the signal generator to the system check source and the power meter, which includes the amplifier, cable, attenuator and directional coupler, was measured by the network analyzer. The reading of the power meter was offset by the path loss difference between the path to the power meter and the path to the system check source to monitor the actual power level fed to the system check source.



## **10. System Verification**

### **10.1 Tissue Verification**

The following tissue formulations are provided for reference only as some of the parameters have not been thoroughly verified. The composition of ingredients may be modified accordingly to achieve the desired target tissue parameters required for routine SAR evaluation.

| Frequency (MHz)  | Water (%) | Sugar (%) | Cellulose (%) | Salt (%) | Preventol (%) | DGBE (%) | Conductivity ( $\sigma$ ) | Permittivity ( $\epsilon_r$ ) |
|------------------|-----------|-----------|---------------|----------|---------------|----------|---------------------------|-------------------------------|
| For Head         |           |           |               |          |               |          |                           |                               |
| 835              | 40.3      | 57.9      | 0.2           | 1.4      | 0.2           | 0        | 0.90                      | 41.5                          |
| 1800, 1900, 2000 | 55.2      | 0         | 0             | 0.3      | 0             | 44.5     | 1.40                      | 40.0                          |
| For Body         |           |           |               |          |               |          |                           |                               |
| 835              | 50.8      | 48.2      | 0             | 0.9      | 0.1           | 0        | 0.97                      | 55.2                          |
| 1800, 1900, 2000 | 70.2      | 0         | 0             | 0.4      | 0             | 29.4     | 1.52                      | 53.3                          |

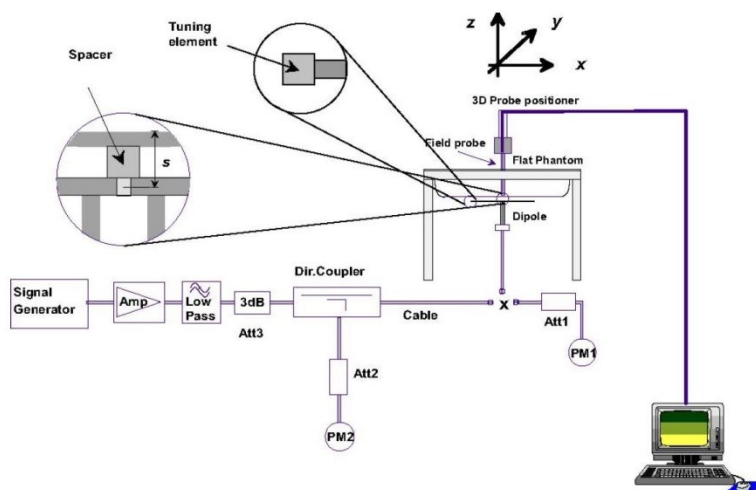
### **<Tissue Dielectric Parameter Check Results>**

| Frequency (MHz) | Tissue Type | Liquid Temp. ( $^{\circ}\text{C}$ ) | Conductivity ( $\sigma$ ) | Permittivity ( $\epsilon_r$ ) | Conductivity Target ( $\sigma$ ) | Permittivity Target ( $\epsilon_r$ ) | Delta ( $\sigma$ ) (%) | Delta ( $\epsilon_r$ ) (%) | Limit (%) | Date       |
|-----------------|-------------|-------------------------------------|---------------------------|-------------------------------|----------------------------------|--------------------------------------|------------------------|----------------------------|-----------|------------|
| 835             | Head        | 22.7                                | 0.887                     | 41.987                        | 0.90                             | 41.50                                | -1.44                  | 1.17                       | $\pm 5$   | 2015/12/15 |
| 1900            | Head        | 22.6                                | 1.433                     | 38.740                        | 1.40                             | 40.00                                | 2.36                   | -3.15                      | $\pm 5$   | 2015/12/15 |
| 835             | Body        | 22.8                                | 1.011                     | 56.243                        | 0.97                             | 55.20                                | 4.23                   | 1.89                       | $\pm 5$   | 2015/12/16 |
| 1900            | Body        | 22.7                                | 1.580                     | 54.631                        | 1.52                             | 53.30                                | 3.95                   | 2.50                       | $\pm 5$   | 2015/12/16 |

## 10.2 System Performance Check Results

Comparing to the original SAR value provided by SPEAG, the verification data should be within its specification of 10 %. Below table shows the target SAR and measured SAR after normalized to 1W input power. The table below indicates the system performance check can meet the variation criterion and the plots can be referred to Appendix A of this report.

| Date       | Frequency (MHz) | Tissue Type | Input Power (mW) | Dipole S/N | Probe S/N | DAE S/N | Measured 1g SAR (W/kg) | Targeted 1g SAR (W/kg) | Normalized 1g SAR (W/kg) | Deviation (%) |
|------------|-----------------|-------------|------------------|------------|-----------|---------|------------------------|------------------------|--------------------------|---------------|
| 2015/12/15 | 835             | Head        | 250              | 4d200      | 3958      | 1386    | 2.20                   | 9.15                   | 8.8                      | -3.83         |
| 2015/12/15 | 1900            | Head        | 250              | 5d210      | 3958      | 1386    | 10.40                  | 41.10                  | 41.6                     | 1.22          |
| 2015/12/16 | 835             | Body        | 250              | 4d200      | 3958      | 1386    | 2.31                   | 9.55                   | 9.24                     | -3.25         |
| 2015/12/16 | 1900            | Body        | 250              | 5d210      | 3958      | 1386    | 10.40                  | 40.00                  | 41.6                     | 4.00          |



**Fig 8.3.1 System Performance Check Setup**



**Fig 8.3.2 Setup Photo**

## 11. RF Exposure Positions

### 11.1 Ear and handset reference point

Figure 9.1.1 shows the front, back, and side views of the SAM phantom. The center-of-mouth reference point is labeled "M," the left ear reference point (ERP) is marked "LE," and the right ERP is marked "RE." Each ERP is 15 mm along the B-M (back-mouth) line behind the entrance-to-ear-canal (EEC) point, as shown in Figure 9.1.2 The Reference Plane is defined as passing through the two ear reference points and point M. The line N-F (neck-front), also called the reference pivoting line, is normal to the Reference Plane and perpendicular to both a line passing through RE and LE and the B-M line (see Figure 9.1.3). Both N-F and B-M lines should be marked on the exterior of the phantom shell to facilitate handset positioning. Posterior to the N-F line the ear shape is a flat surface with 6 mm thickness at each ERP, and forward of the N-F line the ear is truncated, as illustrated in Figure 9.1.2. The ear truncation is introduced to preclude the ear lobe from interfering with handset tilt, which could lead to unstable positioning at the cheek.

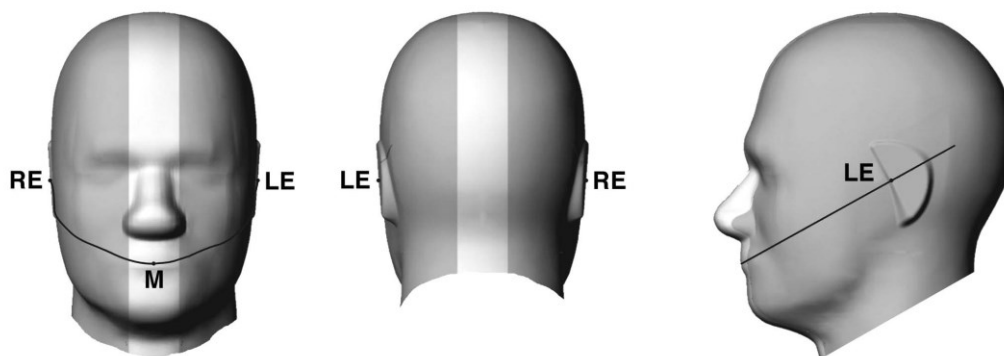


Fig 9.1.1 Front, back, and side views of SAM twin phantom

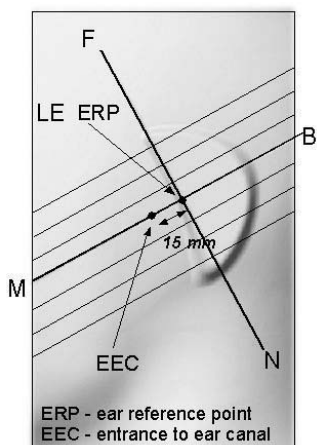


Fig 9.1.2 Close-up side view of phantom showing the ear region.

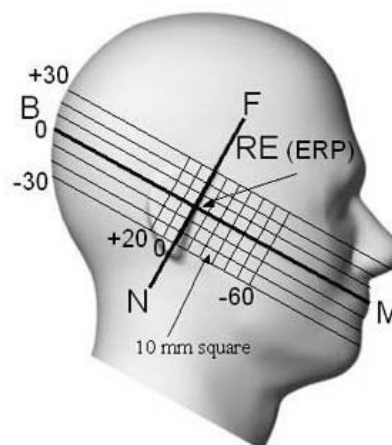
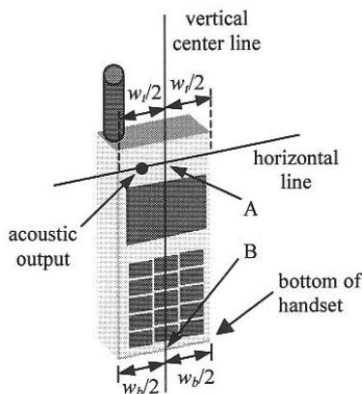


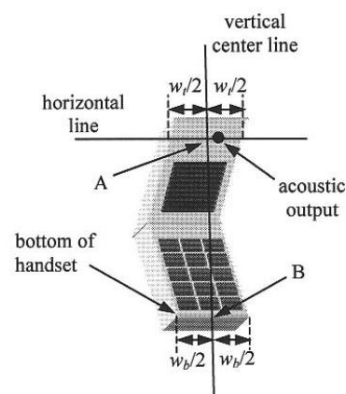
Fig 9.1.3 Side view of the phantom showing relevant markings and seven cross-sectional plane locations

## 11.2 Definition of the cheek position

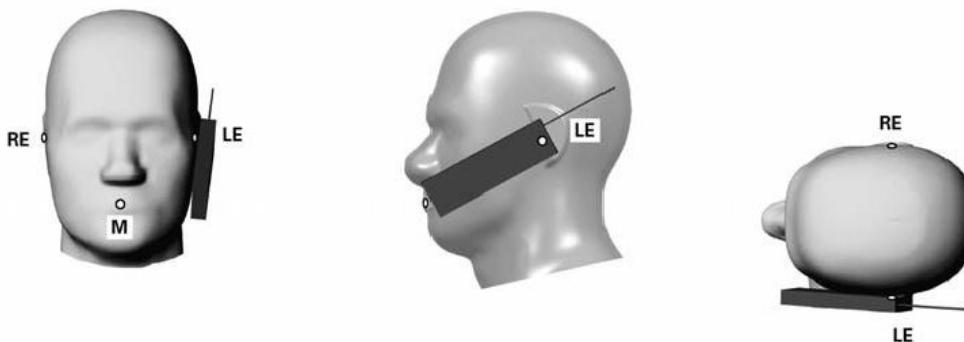
1. Ready the handset for talk operation, if necessary. For example, for handsets with a cover piece (flip cover), open the cover. If the handset can transmit with the cover closed, both configurations must be tested.
2. Define two imaginary lines on the handset—the vertical centerline and the horizontal line. The vertical centerline passes through two points on the front side of the handset—the midpoint of the width  $w_t$  of the handset at the level of the acoustic output (point A in Figure 9.2.1 and Figure 9.2.2), and the midpoint of the width  $w_b$  of the bottom of the handset (point B). The horizontal line is perpendicular to the vertical centerline and passes through the center of the acoustic output (see Figure 9.2.1). The two lines intersect at point A. Note that for many handsets, point A coincides with the center of the acoustic output; however, the acoustic output may be located elsewhere on the horizontal line. Also note that the vertical centerline is not necessarily parallel to the front face of the handset (see Figure 9.2.2), especially for clamshell handsets, handsets with flip covers, and other irregularly-shaped handsets.
3. Position the handset close to the surface of the phantom such that point A is on the (virtual) extension of the line passing through points RE and LE on the phantom (see Figure 9.2.3), such that the plane defined by the vertical centerline and the horizontal line of the handset is approximately parallel to the sagittal plane of the phantom.
4. Translate the handset towards the phantom along the line passing through RE and LE until handset point A touches the pinna at the ERP.
5. While maintaining the handset in this plane, rotate it around the LE-RE line until the vertical centerline is in the plane normal to the plane containing B-M and N-F lines, i.e., the Reference Plane.
6. Rotate the handset around the vertical centerline until the handset (horizontal line) is parallel to the N-F line.
7. While maintaining the vertical centerline in the Reference Plane, keeping point A on the line passing through RE and LE, and maintaining the handset contact with the pinna, rotate the handset about the N-F line until any point on the handset is in contact with a phantom point below the pinna on the cheek. See Figure 9.2.3. The actual rotation angles should be documented in the test report.



**Fig 9.2.1 Handset vertical and horizontal reference lines—“fixed case”**



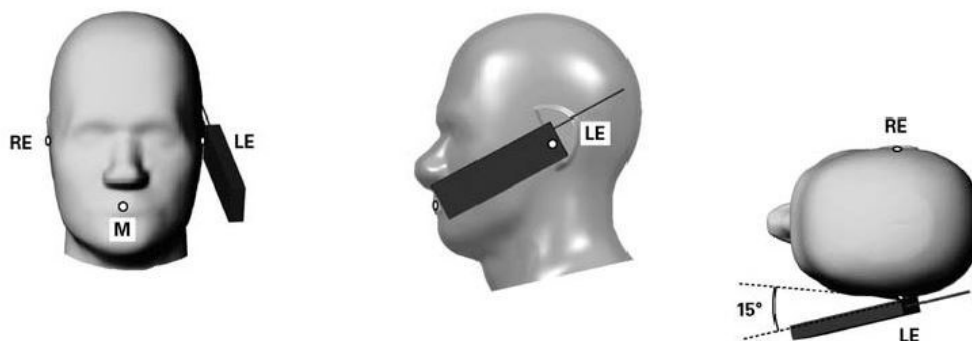
**Fig 9.2.2 Handset vertical and horizontal reference lines—“clam-shell case”**



**Fig 9.2.3 cheek or touch position. The reference points for the right ear (RE), left ear (LE), and mouth (M), which establish the Reference Plane for handset positioning, are indicated.**

### **11.3 Definition of the tilt position**

1. Ready the handset for talk operation, if necessary. For example, for handsets with a cover piece (flip cover), open the cover. If the handset can transmit with the cover closed, both configurations must be tested.
2. While maintaining the orientation of the handset, move the handset away from the pinna along the line passing through RE and LE far enough to allow a rotation of the handset away from the cheek by 15°.
3. Rotate the handset around the horizontal line by 15°.
4. While maintaining the orientation of the handset, move the handset towards the phantom on the line passing through RE and LE until any part of the handset touches the ear. The tilt position is obtained when the contact point is on the pinna. See Figure 9.3.1. If contact occurs at any location other than the pinna, e.g., the antenna at the back of the phantom head, the angle of the handset should be reduced. In this case, the tilt position is obtained if any point on the handset is in contact with the pinna and a second point

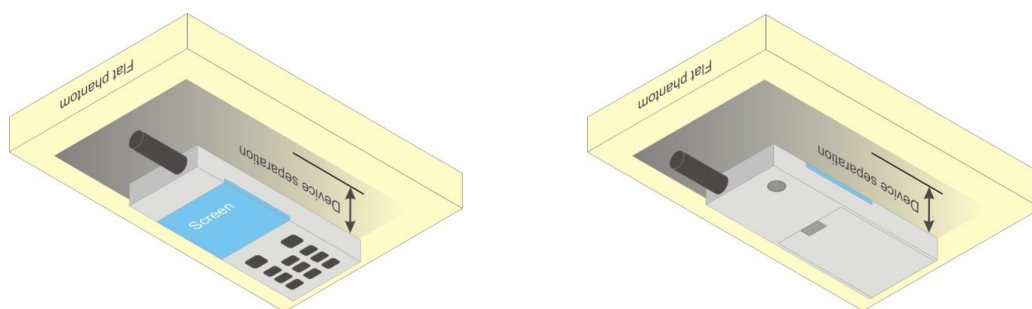


**Fig 9.3.1 Tilt position. The reference points for the right ear (RE), left ear (LE), and mouth (M), which define the Reference Plane for handset positioning, are indicated.**

## 11.4 Body Worn Accessory

Body-worn operating configurations are tested with the belt-clips and holsters attached to the device and positioned against a flat phantom in a normal use configuration (see Figure 9.4). Per KDB648474 D04v01r03, body-worn accessory exposure is typically related to voice mode operations when handsets are carried in body-worn accessories. The body-worn accessory procedures in FCC KDB 447498 D01v06 should be used to test for body-worn accessory SAR compliance, without a headset connected to it. This enables the test results for such configuration to be compatible with that required for hotspot mode when the body-worn accessory test separation distance is greater than or equal to that required for hotspot mode, when applicable. When the reported SAR for body-worn accessory, measured without a headset connected to the handset is  $< 1.2 \text{ W/kg}$ , the highest reported SAR configuration for that wireless mode and frequency band should be repeated for that body-worn accessory with a handset attached to the handset.

Accessories for body-worn operation configurations are divided into two categories: those that do not contain metallic components and those that do contain metallic components. When multiple accessories that do not contain metallic components are supplied with the device, the device is tested with only the accessory that dictates the closest spacing to the body. Then multiple accessories that contain metallic components are test with the device with each accessory. If multiple accessories share an identical metallic component (i.e. the same metallic belt-chip used with different holsters with no other metallic components) only the accessory that dictates the closest spacing to the body is tested.



**Fig 9.4 Body Worn Position**

## **12. Conducted RF Output Power (Unit: dBm)**

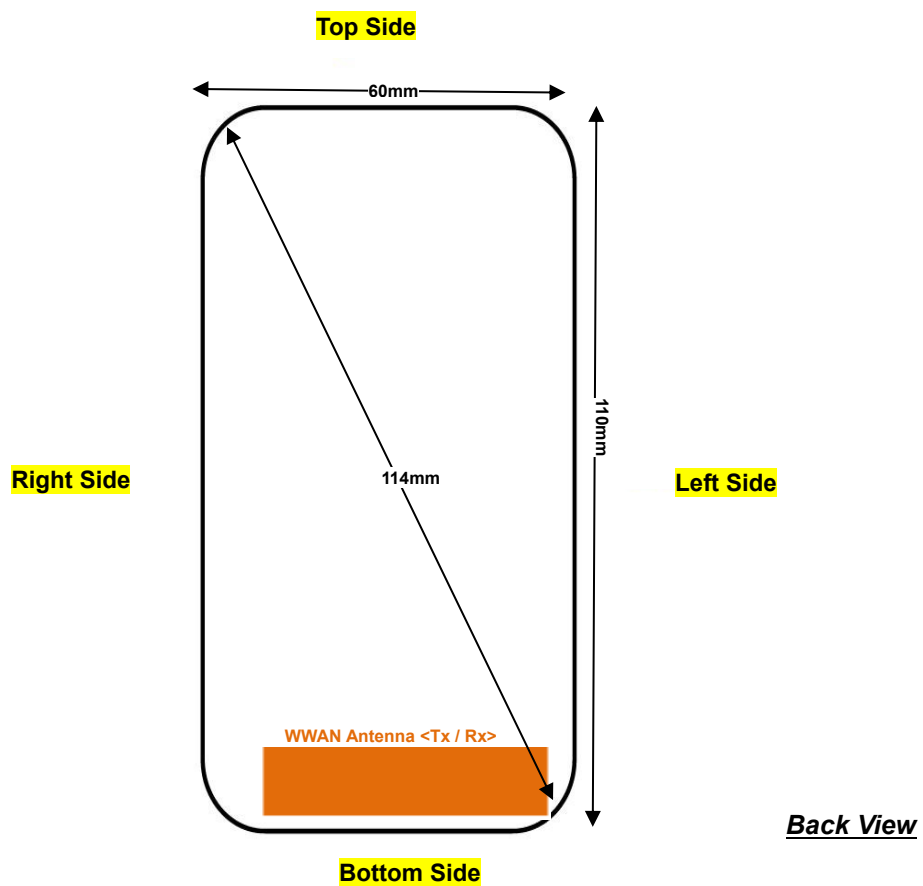
### **<CDMA2000 Conducted Power>**

#### **General Note:**

1. This device additionally supports 1x Advanced. Conducted powers were measured using SO75 with RC8 on the uplink and RC11 on the downlink per KDB 941225D02 v02r02. Smart blanking was disabled for all measurements. The EUT was configured with forward power control Mode 000 and reverse power control at 400 bps. Conducted powers were measured on an Agilent 8960 Series 10 Wireless Communications Test Set, Model E5515C using the CDMA2000 1x Advanced application, Option E1962B-410. Based on the maximum output power measured for 1x Advanced, SAR is required for 1x advanced when if the maximum output for 1x Advanced is more than 0.25 dB higher than the maximum measured for 1x, or the reported SAR in each 1x mode exposure conditions (head, body etc.) is > 1.2 W/kg.
2. Per KDB 941225 D01v03r01, SAR for head exposure is measured in RC3 with the handset configured to transmit at full rate in SO55.
3. Per KDB 941225 D01v03r01, for Body-worn accessory SAR is measured in RC3 with the handset configured in TDSO/SO32 to transmit at full rate on FCH only with all other code channels disabled. The body-worn accessory procedures in KDB Publication 447498 are applied. The 3G SAR test reduction procedure is applied to the multiple code channel configuration (FCH+SCH), with FCH only as the primary mode.

| Band<br>TX Channel      | CDMA2000 BC0 |              |        | Tune-up<br>Limit<br>(dBm) | CDMA2000 BC1 |       |         | Tune-up<br>Limit<br>(dBm) |
|-------------------------|--------------|--------------|--------|---------------------------|--------------|-------|---------|---------------------------|
|                         | 1013         | 384          | 777    |                           | 25           | 600   | 1175    |                           |
| Frequency (MHz)         | 824.7        | 836.52       | 848.31 |                           | 1851.25      | 1880  | 1908.75 |                           |
| 1xRTT RC1 SO55          | 21.24        | 21.51        | 21.35  | 22.00                     | 21.59        | 21.20 | 21.21   | 22.00                     |
| 1xRTT RC3 SO55          | 21.29        | <b>21.52</b> | 21.37  | 22.00                     | <b>21.61</b> | 21.27 | 21.31   | 22.00                     |
| 1xRTT RC3 SO32(+ F-SCH) | 21.19        | 21.37        | 21.35  | 22.00                     | 21.48        | 21.25 | 21.38   | 22.00                     |
| 1xRTT RC3 SO32(+SCH)    | 21.16        | 21.36        | 21.33  | 22.00                     | 21.47        | 21.20 | 21.35   | 22.00                     |

### 13. Antenna Location





## **14. SAR Test Results**

### **General Note:**

1. Per KDB 447498 D01v06, the reported SAR is the measured SAR value adjusted for maximum tune-up tolerance.
  - a. Tune-up scaling Factor = tune-up limit power (mW) / EUT RF power (mW), where tune-up limit is the maximum rated power among all production units.
  - b. For WWAN: Reported SAR(W/kg)= Measured SAR(W/kg)\*Tune-up Scaling Factor
2. Per KDB 447498 D01v06, for each exposure position, testing of other required channels within the operating mode of a frequency band is not required when the *reported* 1-g or 10-g SAR for the mid-band or highest output power channel is:
  - $\leq 0.8$  W/kg or 2.0 W/kg, for 1-g or 10-g respectively, when the transmission band is  $\leq 100$  MHz
  - $\leq 0.6$  W/kg or 1.5 W/kg, for 1-g or 10-g respectively, when the transmission band is between 100 MHz and 200 MHz
  - $\leq 0.4$  W/kg or 1.0 W/kg, for 1-g or 10-g respectively, when the transmission band is  $\geq 200$  MHz
3. Per KDB 648474 D04v01r03, when the reported SAR for a body-worn accessory measured without a headset connected to the handset is  $\leq 1.2$  W/kg, SAR testing with a headset connected to the handset is not required.

### **CMDA Note:**

1. Per KDB 941225 D01v03r01, SAR for next to the ear head exposure is measured in RC3 with the handset configured to transmit at full rate in SO55.
2. Per KDB 941225 D01v03r01, for Body-worn accessory SAR is measured in RC3 with the handset configured in TDSO/SO32 to transmit at full rate on FCH only with all other code channels disabled. The body-worn accessory procedures in KDB Publication 447498 are applied. The 3G SAR test reduction procedure is applied to the multiple code channel configuration (FCH+SCH), with FCH only as the primary mode.

**14.1 Head SAR****<CDMA SAR>**

| Plot No. | Band         | Mode     | Test Position | Ch.  | Freq. (MHz) | Average Power (dBm) | Tune-Up Limit (dBm) | Tune-up Scaling Factor | Power Drift (dB) | Measured 1g SAR (W/kg) | Reported 1g SAR (W/kg) |
|----------|--------------|----------|---------------|------|-------------|---------------------|---------------------|------------------------|------------------|------------------------|------------------------|
|          | CDMA2000 BC0 | RC3+SO55 | Right Cheek   | 384  | 836.52      | 21.52               | 22.00               | 1.117                  | 0.05             | 0.367                  | 0.410                  |
|          | CDMA2000 BC0 | RC3+SO55 | Right Tilted  | 384  | 836.52      | 21.52               | 22.00               | 1.117                  | 0.18             | 0.291                  | 0.325                  |
| #01      | CDMA2000 BC0 | RC3+SO55 | Left Cheek    | 384  | 836.52      | 21.52               | 22.00               | 1.117                  | 0.05             | 0.428                  | 0.478                  |
|          | CDMA2000 BC0 | RC3+SO55 | Left Tilted   | 384  | 836.52      | 21.52               | 22.00               | 1.117                  | 0.03             | 0.246                  | 0.275                  |
|          | CDMA2000 BC1 | RC3+SO55 | Right Cheek   | 25   | 1851.25     | 21.61               | 22.00               | 1.094                  | 0.02             | 0.680                  | 0.744                  |
|          | CDMA2000 BC1 | RC3+SO55 | Right Tilted  | 25   | 1851.25     | 21.61               | 22.00               | 1.094                  | 0.02             | 0.300                  | 0.328                  |
|          | CDMA2000 BC1 | RC3+SO55 | Left Cheek    | 25   | 1851.25     | 21.61               | 22.00               | 1.094                  | 0.1              | 0.757                  | 0.887                  |
|          | CDMA2000 BC1 | RC3+SO55 | Left Tilted   | 25   | 1851.25     | 21.61               | 22.00               | 1.094                  | -0.04            | 0.362                  | 0.396                  |
| #02      | CDMA2000 BC1 | RC3+SO55 | Left Cheek    | 600  | 1880        | 21.27               | 22.00               | 1.183                  | 0.09             | 0.953                  | 1.127                  |
|          | CDMA2000 BC1 | RC3+SO55 | Left Cheek    | 1175 | 1908.75     | 21.31               | 22.00               | 1.172                  | -0.03            | 0.572                  | 0.626                  |

**14.2 Body Worn Accessory SAR****<CDMA SAR>**

| Plot No. | Band         | Mode     | Test Position | Gap (mm) | Ch.  | Freq. (MHz) | Average Power (dBm) | Tune-Up Limit (dBm) | Tune-up Scaling Factor | Power Drift (dB) | Measured 1g SAR (W/kg) | Reported 1g SAR (W/kg) |
|----------|--------------|----------|---------------|----------|------|-------------|---------------------|---------------------|------------------------|------------------|------------------------|------------------------|
|          | CDMA2000 BC0 | RC3+SO32 | Front         | 15       | 384  | 836.52      | 21.37               | 22.00               | 1.156                  | 0.03             | 0.392                  | 0.453                  |
| #03      | CDMA2000 BC0 | RC3+SO32 | Back          | 15       | 384  | 836.52      | 21.37               | 22.00               | 1.156                  | 0.04             | 0.868                  | 1.004                  |
|          | CDMA2000 BC0 | RC3+SO32 | Back          | 15       | 1013 | 824.7       | 21.19               | 22.00               | 1.205                  | 0.12             | 0.725                  | 0.874                  |
|          | CDMA2000 BC0 | RC3+SO32 | Back          | 15       | 777  | 848.31      | 21.35               | 22.00               | 1.161                  | 0.09             | 0.604                  | 0.702                  |
|          | CDMA2000 BC1 | RC3+SO32 | Front         | 15       | 25   | 1851.25     | 21.48               | 22.00               | 1.127                  | -0.05            | 0.358                  | 0.404                  |
| #04      | CDMA2000 BC1 | RC3+SO32 | Back          | 15       | 25   | 1851.25     | 21.48               | 22.00               | 1.127                  | 0.02             | 0.366                  | 0.413                  |

**14.3 Repeated SAR Measurement**

| No. | Band         | Mode     | Test Position | Gap (mm) | Ch. | Freq. (MHz) | Average Power (dBm) | Tune-Up Limit (dBm) | Tune-up Scaling Factor | Power Drift (dB) | Measured 1g SAR (W/kg) | Ratio | Reported 1g SAR (W/kg) |
|-----|--------------|----------|---------------|----------|-----|-------------|---------------------|---------------------|------------------------|------------------|------------------------|-------|------------------------|
| 1st | CDMA2000 BC1 | RC3 SO55 | Left Cheek    | -        | 600 | 1880        | 21.27               | 22.00               | 1.183                  | 0.09             | 0.953                  | 1     | 1.127                  |
| 2nd | CDMA2000 BC1 | RC3 SO55 | Left Cheek    | -        | 600 | 1880        | 21.27               | 22.00               | 1.183                  | 0.14             | 0.951                  | 1.002 | 1.125                  |
| 1st | CDMA2000 BC0 | RC3+SO32 | Back          | 15       | 384 | 836.52      | 21.37               | 22.00               | 1.156                  | 0.04             | 0.868                  | 1     | 1.004                  |
| 2nd | CDMA2000 BC0 | RC3+SO32 | Back          | 15       | 384 | 836.52      | 21.37               | 22.00               | 1.156                  | 0.01             | 0.865                  | 1.004 | 1.000                  |

**General Note:**

1. Per KDB 865664 D01v01r04, for each frequency band, repeated SAR measurement is required only when the measured SAR is  $\geq 0.8\text{W/kg}$ .
2. Per KDB 865664 D01v01r04, if the ratio among the repeated measurement is  $\leq 1.2$  and the measured SAR  $< 1.45\text{W/kg}$ , only one repeated measurement is required.
3. The ratio is the difference in percentage between original and repeated *measured SAR*.
4. All measurement SAR result is scaled-up to account for tune-up tolerance and is compliant.

## 15. Uncertainty Assessment

The component of uncertainty may generally be categorized according to the methods used to evaluate them. The evaluation of uncertainty by the statistical analysis of a series of observations is termed a Type A evaluation of uncertainty. The evaluation of uncertainty by means other than the statistical analysis of a series of observation is termed a Type B evaluation of uncertainty. Each component of uncertainty, however evaluated, is represented by an estimated standard deviation, termed standard uncertainty, which is determined by the positive square root of the estimated variance.

A Type A evaluation of standard uncertainty may be based on any valid statistical method for treating data. This includes calculating the standard deviation of the mean of a series of independent observations; using the method of least squares to fit a curve to the data in order to estimate the parameter of the curve and their standard deviations; or carrying out an analysis of variance in order to identify and quantify random effects in certain kinds of measurement.

A type B evaluation of standard uncertainty is typically based on scientific judgment using all of the relevant information available. These may include previous measurement data, experience, and knowledge of the behavior and properties of relevant materials and instruments, manufacture's specification, data provided in calibration reports and uncertainties assigned to reference data taken from handbooks. Broadly speaking, the uncertainty is either obtained from an outdoor source or obtained from an assumed distribution, such as the normal distribution, rectangular or triangular distributions indicated in table below.

| Uncertainty Distributions          | Normal                     | Rectangular   | Triangular    | U-Shape       |
|------------------------------------|----------------------------|---------------|---------------|---------------|
| Multi-plying Factor <sup>(a)</sup> | 1/ $\kappa$ <sup>(b)</sup> | 1/ $\sqrt{3}$ | 1/ $\sqrt{6}$ | 1/ $\sqrt{2}$ |

(a) standard uncertainty is determined as the product of the multiplying factor and the estimated range of variations in the measured quantity

(b)  $\kappa$  is the coverage factor

**Table 15.1. Standard Uncertainty for Assumed Distribution**

The combined standard uncertainty of the measurement result represents the estimated standard deviation of the result. It is obtained by combining the individual standard uncertainties of both Type A and Type B evaluation using the usual "root-sum-squares" (RSS) methods of combining standard deviations by taking the positive square root of the estimated variances.

Expanded uncertainty is a measure of uncertainty that defines an interval about the measurement result within which the measured value is confidently believed to lie. It is obtained by multiplying the combined standard uncertainty by a coverage factor. Typically, the coverage factor ranges from 2 to 3. Using a coverage factor allows the true value of a measured quantity to be specified with a defined probability within the specified uncertainty range. For purpose of this document, a coverage factor two is used, which corresponds to confidence interval of about 95 %. The DASY uncertainty Budget is shown in the following tables.

| Error Description                 | Uncertainty Value (±%) | Probability | Divisor | (Ci) 1g | (Ci) 10g | Standard Uncertainty (1g) (±%) | Standard Uncertainty (10g) (±%) |
|-----------------------------------|------------------------|-------------|---------|---------|----------|--------------------------------|---------------------------------|
| <b>Measurement System</b>         |                        |             |         |         |          |                                |                                 |
| Probe Calibration                 | 6.0                    | N           | 1       | 1       | 1        | 6.0                            | 6.0                             |
| Axial Isotropy                    | 4.7                    | R           | 1.732   | 0.7     | 0.7      | 1.9                            | 1.9                             |
| Hemispherical Isotropy            | 9.6                    | R           | 1.732   | 0.7     | 0.7      | 3.9                            | 3.9                             |
| Boundary Effects                  | 1.0                    | R           | 1.732   | 1       | 1        | 0.6                            | 0.6                             |
| Linearity                         | 4.7                    | R           | 1.732   | 1       | 1        | 2.7                            | 2.7                             |
| System Detection Limits           | 1.0                    | R           | 1.732   | 1       | 1        | 0.6                            | 0.6                             |
| Modulation Response               | 3.2                    | R           | 1.732   | 1       | 1        | 1.8                            | 1.8                             |
| Readout Electronics               | 0.3                    | N           | 1       | 1       | 1        | 0.3                            | 0.3                             |
| Response Time                     | 0.0                    | R           | 1.732   | 1       | 1        | 0.0                            | 0.0                             |
| Integration Time                  | 2.6                    | R           | 1.732   | 1       | 1        | 1.5                            | 1.5                             |
| RF Ambient Noise                  | 3.0                    | R           | 1.732   | 1       | 1        | 1.7                            | 1.7                             |
| RF Ambient Reflections            | 3.0                    | R           | 1.732   | 1       | 1        | 1.7                            | 1.7                             |
| Probe Positioner                  | 0.4                    | R           | 1.732   | 1       | 1        | 0.2                            | 0.2                             |
| Probe Positioning                 | 2.9                    | R           | 1.732   | 1       | 1        | 1.7                            | 1.7                             |
| Max. SAR Eval.                    | 2.0                    | R           | 1.732   | 1       | 1        | 1.2                            | 1.2                             |
| <b>Test Sample Related</b>        |                        |             |         |         |          |                                |                                 |
| Device Positioning                | 3.0                    | N           | 1       | 1       | 1        | 3.0                            | 3.0                             |
| Device Holder                     | 3.6                    | N           | 1       | 1       | 1        | 3.6                            | 3.6                             |
| Power Drift                       | 5.0                    | R           | 1.732   | 1       | 1        | 2.9                            | 2.9                             |
| Power Scaling                     | 0.0                    | R           | 1.732   | 1       | 1        | 0.0                            | 0.0                             |
| <b>Phantom and Setup</b>          |                        |             |         |         |          |                                |                                 |
| Phantom Uncertainty               | 6.1                    | R           | 1.732   | 1       | 1        | 3.5                            | 3.5                             |
| SAR correction                    | 0.0                    | R           | 1.732   | 1       | 0.84     | 0.0                            | 0.0                             |
| Liquid Conductivity Repeatability | 0.2                    | N           | 1       | 0.78    | 0.71     | 0.1                            | 0.1                             |
| Liquid Conductivity (target)      | 5.0                    | R           | 1.732   | 0.78    | 0.71     | 2.3                            | 2.0                             |
| Liquid Conductivity (mea.)        | 2.5                    | R           | 1.732   | 0.78    | 0.71     | 1.1                            | 1.0                             |
| Temp. unc. - Conductivity         | 3.4                    | R           | 1.732   | 0.78    | 0.71     | 1.5                            | 1.4                             |
| Liquid Permittivity Repeatability | 0.15                   | N           | 1       | 0.23    | 0.26     | 0.0                            | 0.0                             |
| Liquid Permittivity (target)      | 5.0                    | R           | 1.732   | 0.23    | 0.26     | 0.7                            | 0.8                             |
| Liquid Permittivity (mea.)        | 2.5                    | R           | 1.732   | 0.23    | 0.26     | 0.3                            | 0.4                             |
| Temp. unc. - Permittivity         | 0.83                   | R           | 1.732   | 0.23    | 0.26     | 0.1                            | 0.1                             |
| <b>Combined Std. Uncertainty</b>  |                        |             |         |         |          | <b>11.4%</b>                   | <b>11.4%</b>                    |
| <b>Coverage Factor for 95 %</b>   |                        |             |         |         |          | <b>K=2</b>                     | <b>K=2</b>                      |
| <b>Expanded STD Uncertainty</b>   |                        |             |         |         |          | <b>22.9%</b>                   | <b>22.7%</b>                    |

**Table 15.2. Uncertainty Budget for frequency range 300 MHz to 3 GHz**

## **16. References**

- [1] FCC 47 CFR Part 2 "Frequency Allocations and Radio Treaty Matters; General Rules and Regulations"
- [2] ANSI/IEEE Std. C95.1-1992, "IEEE Standard for Safety Levels with Respect to Human Exposure to Radio Frequency Electromagnetic Fields, 3 kHz to 300 GHz", September 1992
- [3] IEEE Std. 1528-2013, "IEEE Recommended Practice for Determining the Peak Spatial-Average Specific Absorption Rate (SAR) in the Human Head from Wireless Communications Devices: Measurement Techniques", Sep 2013
- [4] SPEAG DASY System Handbook
- [5] FCC KDB 447498 D01 v06, "Mobile and Portable Device RF Exposure Procedures and Equipment Authorization Policies", Oct 2015
- [6] FCC KDB 648474 D04 v01r03, "SAR Evaluation Considerations for Wireless Handsets", Oct 2015.
- [7] FCC KDB 941225 D01 v03r01, "3G SAR MEASUREMNT PROCEDURES", Oct 2015
- [8] FCC KDB 865664 D01 v01r04, "SAR Measurement Requirements for 100 MHz to 6 GHz", Aug 2015.
- [9] FCC KDB 865664 D02 v01r02, "RF Exposure Compliance Reporting and Documentation Considerations" Oct 2015.



---

## ***Appendix A. Plots of System Performance Check***

The plots are shown as follows.

## #System Check\_Head\_835MHz\_151215

**DUT: D835V2-SN:4d200**

Communication System: UID 0, CW; Frequency: 835 MHz; Duty Cycle: 1:1

Medium: HSL\_835\_151215 Medium parameters used:  $f = 835$  MHz;  $\sigma = 0.887$  S/m;  $\epsilon_r = 41.987$ ;  $\rho = 1000$  kg/m<sup>3</sup>**Ambient Temperature:** 23.3 °C ; **Liquid Temperature:** 22.7 °C

DASY5 Configuration:

- Probe: EX3DV4 - SN3958; ConvF(9.96, 9.96, 9.96); Calibrated: 2015.07.23;
- Sensor-Surface: 2mm (Mechanical Surface Detection)
- Electronics: DAE4 Sn1386; Calibrated: 2015.02.19
- Phantom: SAM1; Type: QD000P40CD; Serial: TP:1670
- Measurement SW: DASY52, Version 52.8 (8); SEMCAD X Version 14.6.10 (7331)

**Pin=250mW/Area Scan (61x61x1):** Interpolated grid: dx=15mm, dy=15mm

Maximum value of SAR (interpolated) = 2.79 W/kg

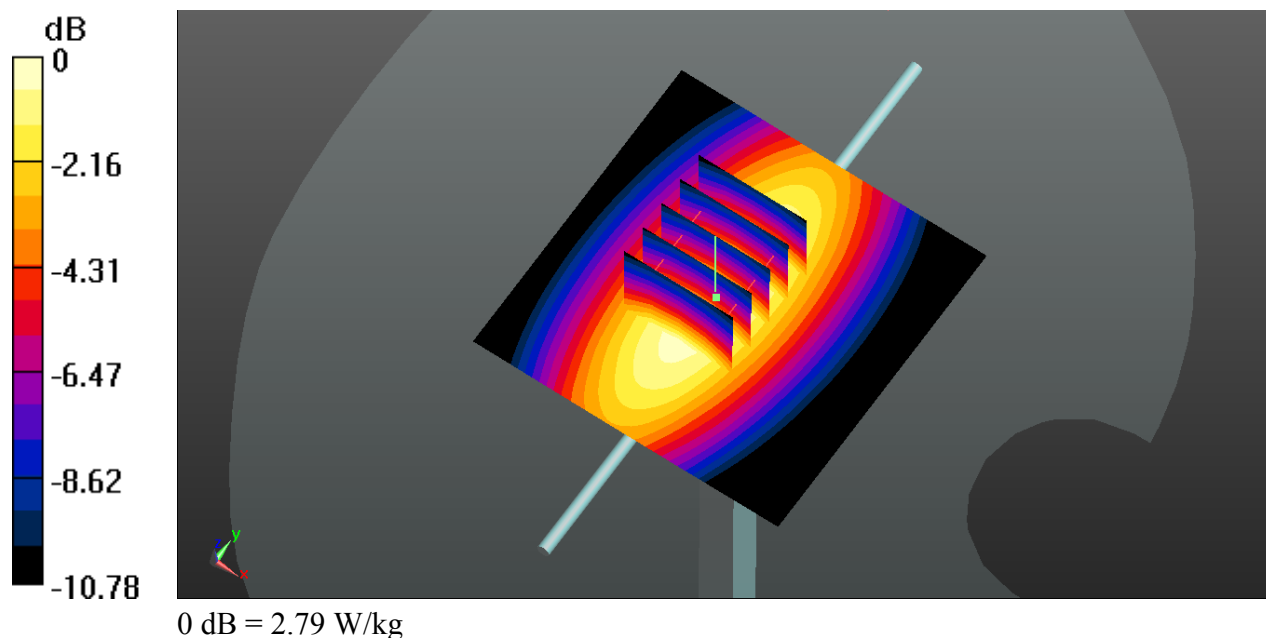
**Pin=250mW/Zoom Scan (5x5x7)/Cube 0:** Measurement grid: dx=8mm, dy=8mm, dz=5mm

Reference Value = 56.55 V/m; Power Drift = 0.01 dB

Peak SAR (extrapolated) = 3.30 W/kg

**SAR(1 g) = 2.2 W/kg; SAR(10 g) = 1.44 W/kg**

Maximum value of SAR (measured) = 2.79 W/kg





**#System Check\_Head\_1900MHz\_151215****DUT: D1900V2-SN:5d210**

Communication System: UID 0, CW; Frequency: 1900 MHz; Duty Cycle: 1:1

Medium: HSL\_1900\_151215 Medium parameters used:  $f = 1900$  MHz;  $\sigma = 1.433$  S/m;  $\epsilon_r = 38.74$ ;  $\rho = 1000$  kg/m<sup>3</sup>**Ambient Temperature:** 23.3 °C ; **Liquid Temperature:** 22.6 °C

DASY5 Configuration:

- Probe: EX3DV4 - SN3958; ConvF(8.22, 8.22, 8.22); Calibrated: 2015.07.23;
- Sensor-Surface: 2mm (Mechanical Surface Detection)
- Electronics: DAE4 Sn1386; Calibrated: 2015.02.19
- Phantom: SAM1; Type: QD000P40CD; Serial: TP:1670
- Measurement SW: DASY52, Version 52.8 (8); SEMCAD X Version 14.6.10 (7331)

**Pin=250mW/Area Scan (61x61x1):** Interpolated grid: dx=15mm, dy=15mm

Maximum value of SAR (interpolated) = 15.0 W/kg

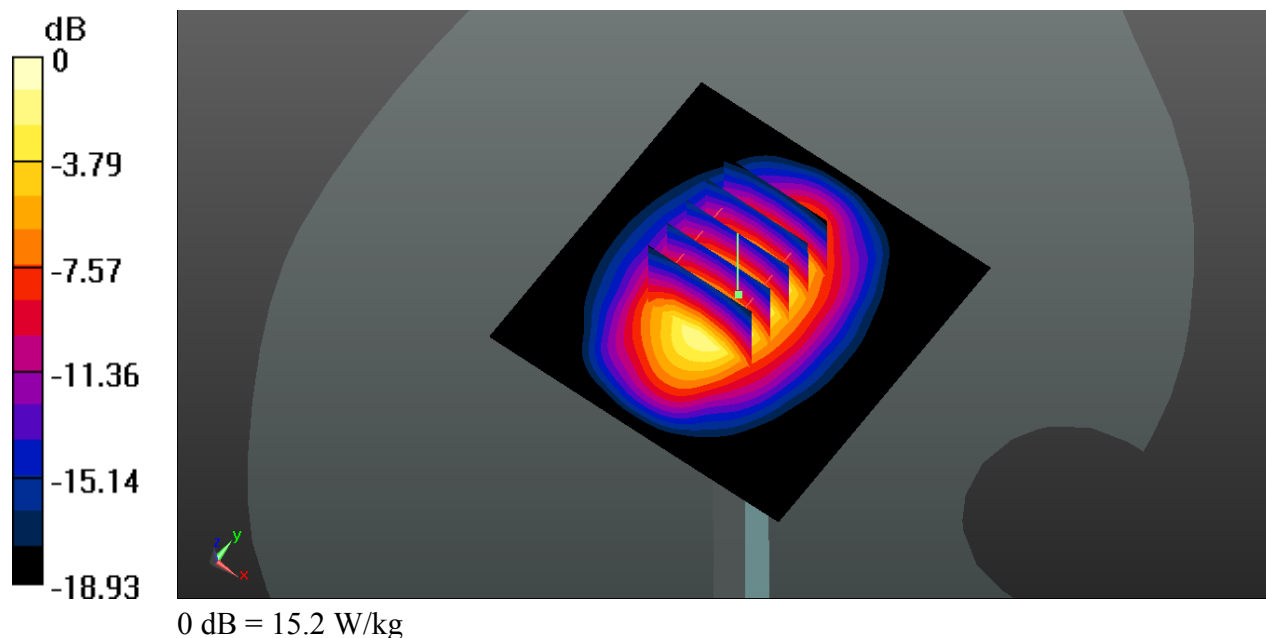
**Pin=250mW/Zoom Scan (5x5x7)/Cube 0:** Measurement grid: dx=8mm, dy=8mm, dz=5mm

Reference Value = 103.1 V/m; Power Drift = 0.02 dB

Peak SAR (extrapolated) = 19.5 W/kg

**SAR(1 g) = 10.4 W/kg; SAR(10 g) = 5.36 W/kg**

Maximum value of SAR (measured) = 15.2 W/kg



**#System Check\_Body\_835MHz\_151216****DUT: D835V2-SN:4d200**

Communication System: UID 0, CW; Frequency: 835 MHz; Duty Cycle: 1:1

Medium: MSL\_835\_151216 Medium parameters used:  $f = 835$  MHz;  $\sigma = 1.011$  S/m;  $\epsilon_r = 56.243$ ;  $\rho = 1000$  kg/m<sup>3</sup>**Ambient Temperature:** 23.3 °C ; **Liquid Temperature:** 22.8 °C

DASY5 Configuration:

- Probe: EX3DV4 - SN3958; ConvF(9.99, 9.99, 9.99); Calibrated: 2015.07.23;
- Sensor-Surface: 2mm (Mechanical Surface Detection)
- Electronics: DAE4 Sn1386; Calibrated: 2015.02.19
- Phantom: SAM1; Type: QD000P40CD; Serial: TP:1670
- Measurement SW: DASY52, Version 52.8 (8); SEMCAD X Version 14.6.10 (7331)

**Pin=250mW/Area Scan (61x61x1):** Interpolated grid: dx=15mm, dy=15mm

Maximum value of SAR (interpolated) = 2.49 W/kg

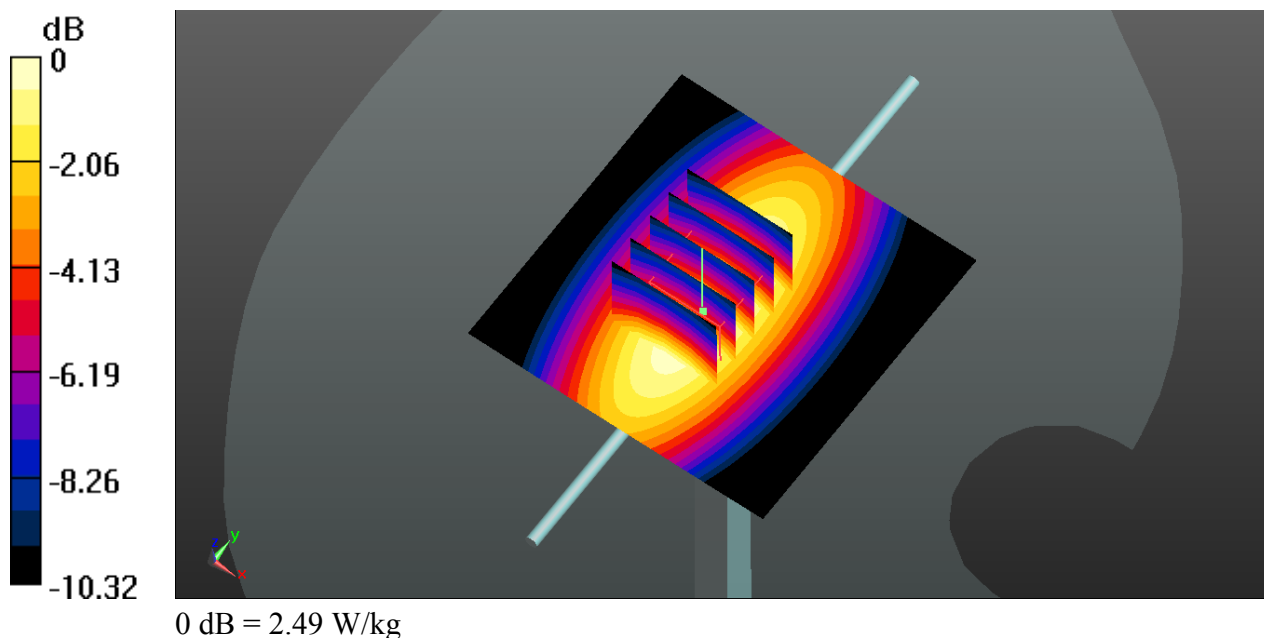
**Pin=250mW/Zoom Scan (5x5x7)/Cube 0:** Measurement grid: dx=8mm, dy=8mm, dz=5mm

Reference Value = 49.46 V/m; Power Drift = 0.03 dB

Peak SAR (extrapolated) = 3.39 W/kg

**SAR(1 g) = 2.31 W/kg; SAR(10 g) = 1.52 W/kg**

Maximum value of SAR (measured) = 2.48 W/kg



## #System Check\_Body\_1900MHz\_151216

**DUT: D1900V2-SN:5d210**

Communication System: UID 0, CW; Frequency: 1900 MHz; Duty Cycle: 1:1

Medium: MSL\_1900\_151216 Medium parameters used:  $f = 1900$  MHz;  $\sigma = 1.58$  S/m;  $\epsilon_r = 54.631$ ;  $\rho = 1000$  kg/m<sup>3</sup>**Ambient Temperature:** 23.4 °C ; **Liquid Temperature:** 22.7 °C

DASY5 Configuration:

- Probe: EX3DV4 - SN3958; ConvF(7.87, 7.87, 7.87); Calibrated: 2015.07.23;
- Sensor-Surface: 2mm (Mechanical Surface Detection)
- Electronics: DAE4 Sn1386; Calibrated: 2015.02.19
- Phantom: SAM1; Type: QD000P40CD; Serial: TP:1670
- Measurement SW: DASY52, Version 52.8 (8); SEMCAD X Version 14.6.10 (7331)

**Pin=250mW/Area Scan (61x61x1):** Interpolated grid: dx=15mm, dy=15mm

Maximum value of SAR (interpolated) = 14.8 W/kg

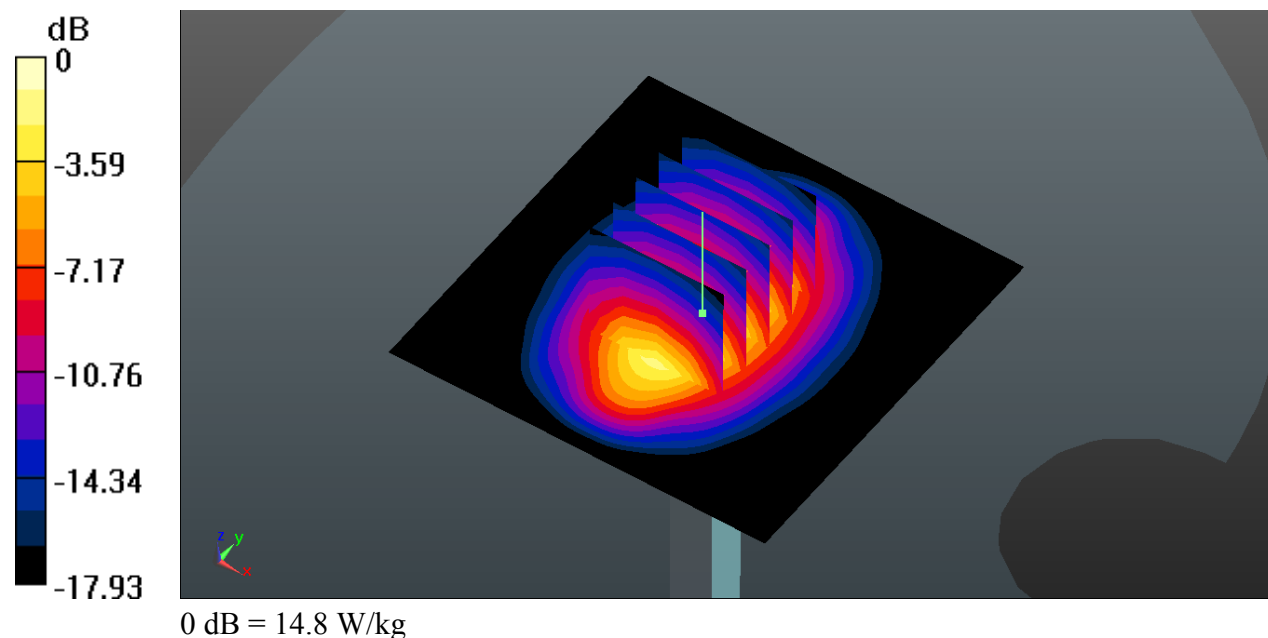
**Pin=250mW/Zoom Scan (5x5x7)/Cube 0:** Measurement grid: dx=8mm, dy=8mm, dz=5mm

Reference Value = 86.72 V/m; Power Drift = -0.01 dB

Peak SAR (extrapolated) = 18.8 W/kg

**SAR(1 g) = 10.4 W/kg; SAR(10 g) = 5.38 W/kg**

Maximum value of SAR (measured) = 15.0 W/kg





---

**Appendix B. Plots of High SAR Measurement**

The plots are shown as follows.

**#01\_CDMA2000 BC0\_RC3+SO55\_Left Cheek\_Ch384**

Communication System: UID 0, CDMA2000 (0); Frequency: 836.52 MHz; Duty Cycle: 1:1  
Medium: HSL\_835\_151215 Medium parameters used:  $f = 836.52$  MHz;  $\sigma = 0.887$  S/m;  $\epsilon_r = 41.941$ ;  $\rho = 1000$  kg/m<sup>3</sup>

**Ambient Temperature:** 23.3 °C ; **Liquid Temperature:** 22.7 °C

**DASY5 Configuration:**

- Probe: EX3DV4 - SN3958; ConvF(9.96, 9.96, 9.96); Calibrated: 2015.07.23;
- Sensor-Surface: 2mm (Mechanical Surface Detection)
- Electronics: DAE4 Sn1386; Calibrated: 2015.02.19
- Phantom: SAM1; Type: QD000P40CD; Serial: TP:1670
- Measurement SW: DASY52, Version 52.8 (8); SEMCAD X Version 14.6.10 (7331)

**Ch384/Area Scan (61x91x1):** Interpolated grid: dx=15mm, dy=15mm

Maximum value of SAR (interpolated) = 0.492 W/kg

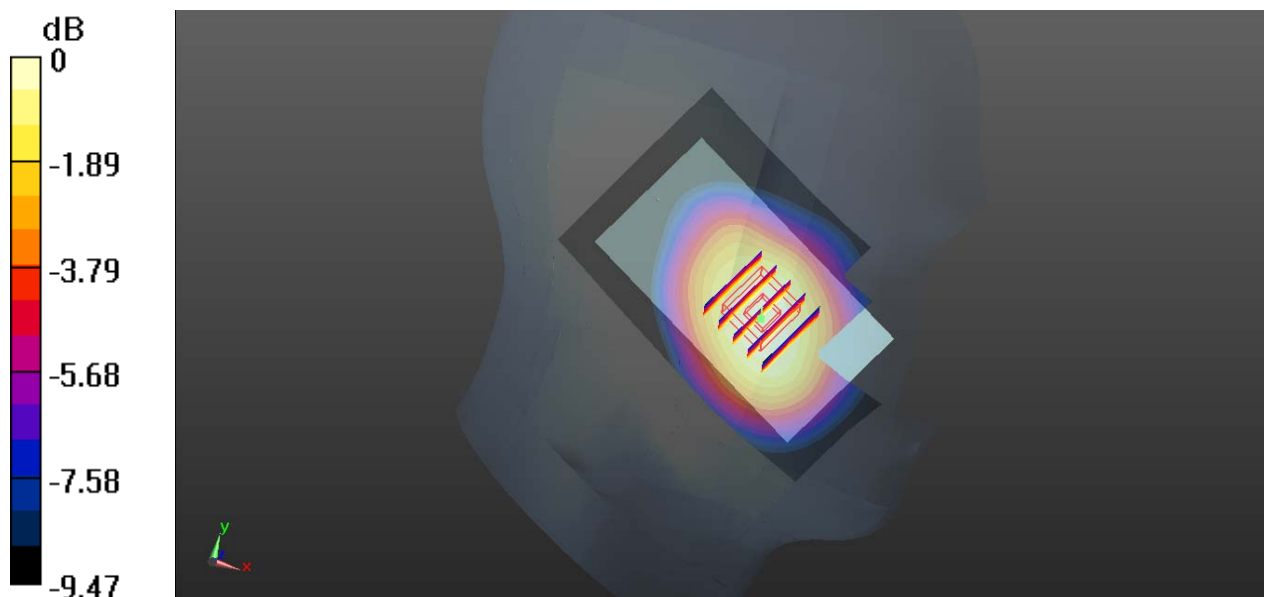
**Ch384/Zoom Scan (5x5x7)/Cube 0:** Measurement grid: dx=8mm, dy=8mm, dz=5mm

Reference Value = 7.605 V/m; Power Drift = 0.05 dB

Peak SAR (extrapolated) = 0.530 W/kg

**SAR(1 g) = 0.428 W/kg; SAR(10 g) = 0.319 W/kg**

Maximum value of SAR (measured) = 0.495 W/kg



0 dB = 0.492 W/kg

**#02\_CDMA2000 BC1\_RC3+SO55\_Left Cheek\_Ch600**

Communication System: UID 0, CDMA2000 (0); Frequency: 1880 MHz; Duty Cycle: 1:1  
Medium: HSL\_1900\_151215 Medium parameters used:  $f = 1880$  MHz;  $\sigma = 1.413$  S/m;  $\epsilon_r = 38.902$ ;  
 $\rho = 1000$  kg/m<sup>3</sup>

**Ambient Temperature:** 23.3 °C ; **Liquid Temperature:** 22.6 °C

**DASY5 Configuration:**

- Probe: EX3DV4 - SN3958; ConvF(8.22, 8.22, 8.22); Calibrated: 2015.07.23;
- Sensor-Surface: 2mm (Mechanical Surface Detection)
- Electronics: DAE4 Sn1386; Calibrated: 2015.02.19
- Phantom: SAM1; Type: QD000P40CD; Serial: TP:1670
- Measurement SW: DASY52, Version 52.8 (8); SEMCAD X Version 14.6.10 (7331)

**Ch600/Area Scan (61x91x1):** Interpolated grid: dx=15mm, dy=15mm

Maximum value of SAR (interpolated) = 1.28 W/kg

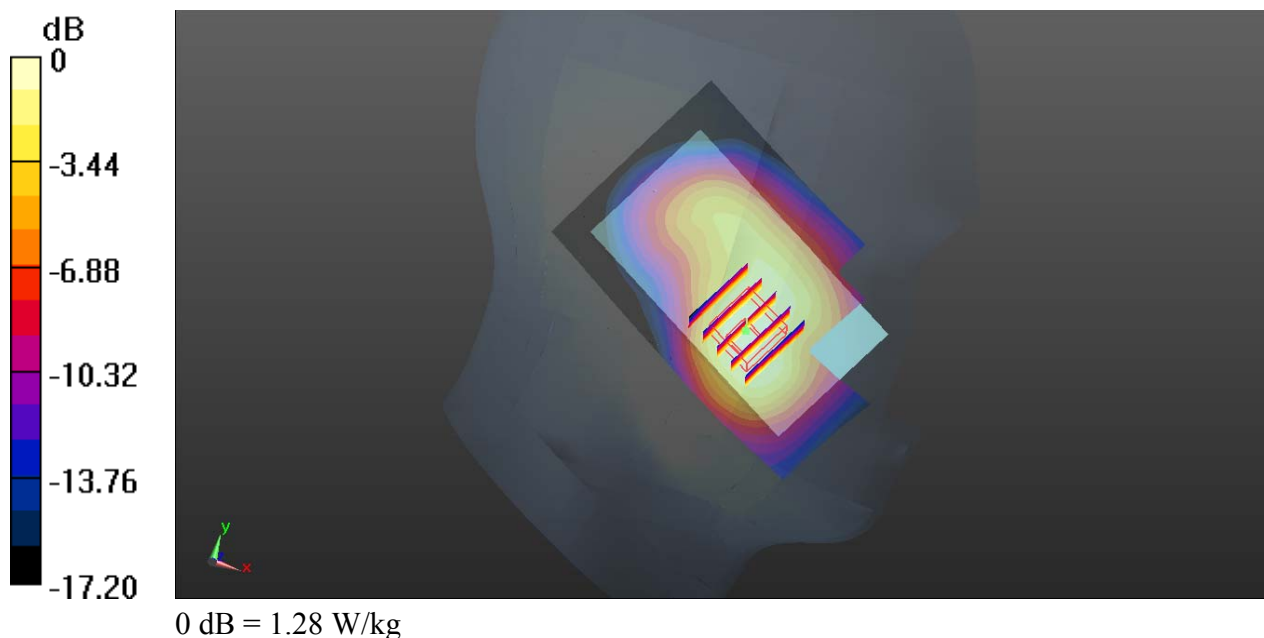
**Ch600/Zoom Scan (5x5x7)/Cube 0:** Measurement grid: dx=8mm, dy=8mm, dz=5mm

Reference Value = 6.235 V/m; Power Drift = 0.09 dB

Peak SAR (extrapolated) = 1.38 W/kg

**SAR(1 g) = 0.953 W/kg; SAR(10 g) = 0.599 W/kg**

Maximum value of SAR (measured) = 1.15 W/kg



**#03\_CDMA2000 BC0\_RC3+SO32\_Back\_15mm\_Ch384**

Communication System: UID 0, CDMA2000 (0); Frequency: 836.52 MHz; Duty Cycle: 1:1  
Medium: MSL\_835\_151216 Medium parameters used:  $f = 836.52$  MHz;  $\sigma = 1.014$  S/m;  $\epsilon_r = 56.222$ ;  $\rho = 1000$  kg/m<sup>3</sup>

**Ambient Temperature:** 23.3 °C ; **Liquid Temperature:** 22.8 °C

**DASY5 Configuration:**

- Probe: EX3DV4 - SN3958; ConvF(9.99, 9.99, 9.99); Calibrated: 2015.07.23;
- Sensor-Surface: 2mm (Mechanical Surface Detection)
- Electronics: DAE4 Sn1386; Calibrated: 2015.02.19
- Phantom: SAM1; Type: QD000P40CD; Serial: TP:1670
- Measurement SW: DASY52, Version 52.8 (8); SEMCAD X Version 14.6.10 (7331)

**Ch384/Area Scan (61x91x1):** Interpolated grid: dx=15mm, dy=15mm

Maximum value of SAR (interpolated) = 1.02 W/kg

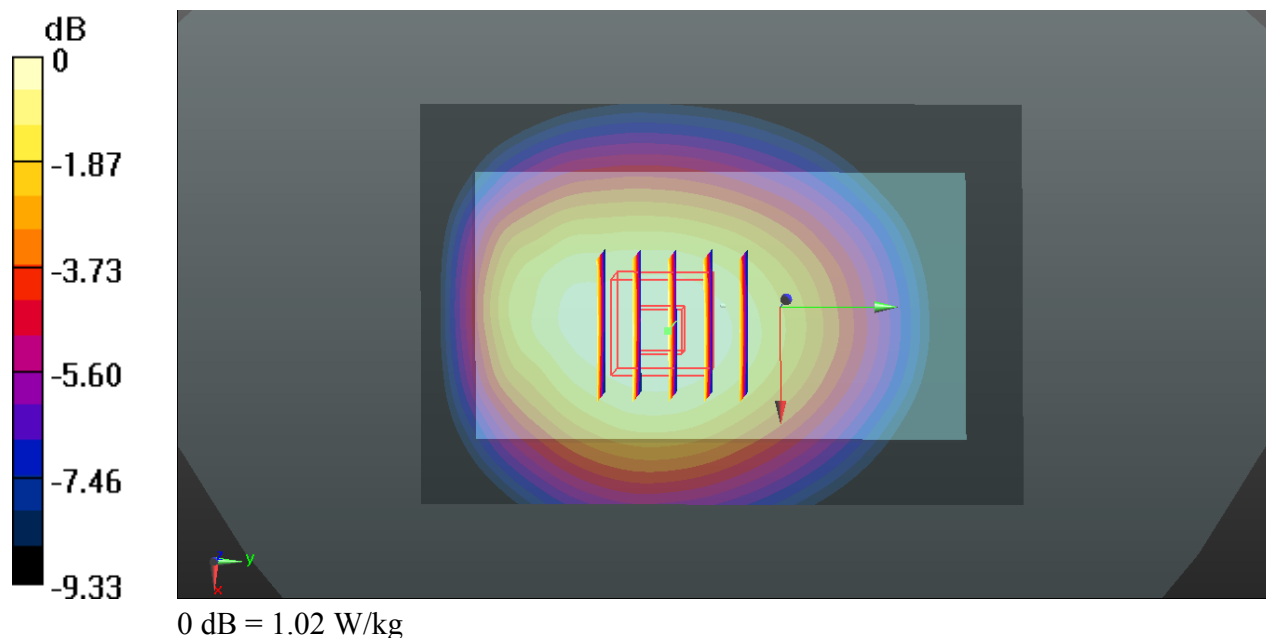
**Ch384/Zoom Scan (5x5x7)/Cube 0:** Measurement grid: dx=8mm, dy=8mm, dz=5mm

Reference Value = 3.360 V/m; Power Drift = 0.04 dB

Peak SAR (extrapolated) = 1.12 W/kg

**SAR(1 g) = 0.868 W/kg; SAR(10 g) = 0.634 W/kg**

Maximum value of SAR (measured) = 1.02 W/kg



**#04\_CDMA2000 BC1\_RC3+SO32\_Back\_15mm\_Ch25**

Communication System: UID 0, CDMA2000 (0); Frequency: 1851.25 MHz; Duty Cycle: 1:1  
Medium: MSL\_1900\_151216 Medium parameters used:  $f = 1851.25$  MHz;  $\sigma = 1.517$  S/m;  $\epsilon_r = 54.743$ ;  $\rho = 1000$  kg/m<sup>3</sup>

**Ambient Temperature:** 23.4 °C ; **Liquid Temperature:** 22.7 °C

**DASY5 Configuration:**

- Probe: EX3DV4 - SN3958; ConvF(7.87, 7.87, 7.87); Calibrated: 2015.07.23;
- Sensor-Surface: 2mm (Mechanical Surface Detection)
- Electronics: DAE4 Sn1386; Calibrated: 2015.02.19
- Phantom: SAM1; Type: QD000P40CD; Serial: TP:1670
- Measurement SW: DASY52, Version 52.8 (8); SEMCAD X Version 14.6.10 (7331)

**Ch25/Area Scan (61x91x1):** Interpolated grid: dx=15mm, dy=15mm

Maximum value of SAR (interpolated) = 0.441 W/kg

**Ch25/Zoom Scan (5x5x7)/Cube 0:** Measurement grid: dx=8mm, dy=8mm, dz=5mm

Reference Value = 2.856 V/m; Power Drift = 0.02 dB

Peak SAR (extrapolated) = 0.497 W/kg

**SAR(1 g) = 0.366 W/kg; SAR(10 g) = 0.219 W/kg**

Maximum value of SAR (measured) = 0.435 W/kg

