



# GluNEO Pet

Blood Glucose Monitoring System

## Instructions For Use

For In Vitro Diagnostic Use in Animals



**OHC** OSANG  
HEALTHCARE



## Table of contents

### Introduction

Intended use	02
Components	05

### Usage Method

Description of Modes	12
Description of Buttons	13
Measurement Mode	14
Sampling Site	27
Memory Mode	28
Setting Mode	31
Bluetooth Communication	37

### Maintenance and troubleshooting

Quality Control	41
Maintenance of the meter	44
Troubleshooting	49

### Technical information

Product Specifications	54
Limitations	55



## Introduction

### Intended for Use

The GluNEO Pet Blood Glucose Monitoring System is intended for home use to monitor blood glucose levels in dogs and cats. It is designed for quantitative measurements of glucose levels in fresh capillary whole blood samples obtained from the marginal ear vein or paw pad.

Additionally, veterinarians and veterinary surgeons may use the GluNEO Pet Blood Glucose Monitoring System for quantitative glucose measurements in venous whole blood samples when managing diabetes in cats and dogs.

The GluNEO Pet Blood Glucose Monitoring System includes:

- GluNEO Pet Meter: Blood Glucose Meter for Pet
- GluNEO Pet Test strips\*: Blood Glucose Test strips for Pet
- Lancing device\*, Lancet\*

\*Some components may not be included depending on the Kit; they can be purchased separately.



 **Warning**

- The GluNEO Pet Blood Glucose Monitoring System should be used for in vitro diagnostics and should not be used for diagnosis of diabetes.
- Before using the GluNEO Pet Blood Glucose Monitoring System, you must read and understand the user manual. Inadequate blood glucose measurements and inaccurate measurement results can lead to adverse effects, such as the progression of the disease owing to delayed treatment.
- The GluNEO Pet Blood Glucose Monitoring System is for pet use and cannot be used on humans.
- If you think your blood glucose test result is abnormally low or high, or if you feel that the result is inaccurate, take another blood glucose test with a new test strip.
- If you have followed all instructions in the instruction for use and your blood glucose measurement results continue to be abnormal, contact your veterinarian.
- Keep all contents of the package out of the reach of children. Swallowing small parts in the package may be a choking hazard for children.



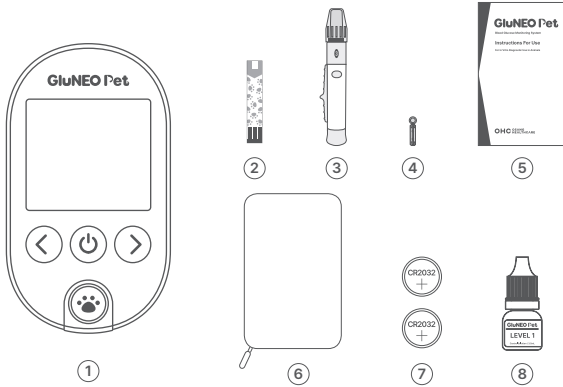
#### GluNEO Pet INSTRUCTIONS FOR USE

---

- Any part that comes into contact with blood should be considered biohazardous and can potentially transmit infectious diseases even after washing. To reduce the possibility of infection, please be aware of the following:
  - The meter and lancing device must be disinfected before use.
  - Test strips and disposable manual lancets are for single use only and reuse is prohibited.
  - Test strips and disposable manual lancets must be disposed of safely after use.
  - Avoid getting hand lotion, oil, dirt or debris on the meter, lancing device, and disposable manual lancets.



## Components



- ① GluNEO Pet Meter
  - ② GluNEO Pet Test strips\*
  - ③ Lancing device (1EA)\*
  - ④ Lancet (25EA)\*
  - ⑤ Instruction for use
  - ⑥ Carrying Case (Pouch)
  - ⑦ Batteries (CR2032, 2EA)
  - ⑧ Control solution\*
- \* Sold separately

The components listed above may vary depending on the type of set. If the component is damaged, do not use it and contact your retailer/seller for a replacement.

The control solution is not included in the set. Please contact your retailer/seller and purchase them separately.

## Meter – Nomenclature

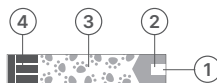


- ① Display (LCD)  
Symbols, messages, and measurement results display
- ② Mode Button  
Recall measurement results stored in memory, enter Standby(screen off) Mode, enter Setting Mode, and save settings
- ③ Left and Right buttons  
Scroll through measurement results, change settings
- ④ Ejector  
Push the test strip out
- ⑤ Battery cover  
A cover to open when replacing batteries
- ⑥ Labeling part  
Meter information
- ⑦ Test strip port  
Insertion port to insert a test strip
- ⑧ Communication port

## Test strip (sold separately) – Nomenclature

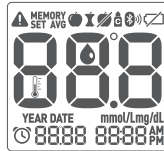
For the GluNEO Pet meter, the GluNEO Pet test strip must be used to obtain accurate blood glucose measurement results.

- ① Blood inlet
- ② Sample confirmation window
- ③ Cover
- ④ Meter contact terminal





Meter – LCD display and symbol descriptions



	Low battery
	Before meal
	After meal
	Fasting
<b>MEMORY</b>	Memory Mode
<b>SET</b>	Setting Mode
<b>AVG</b>	Average display in memory mode
	Blood drop icon for test
	In case of error (refer to "Troubleshooting")
<b>mmol/Lmg/dL</b>	Display unit of measurement (mg/dL or mmol/L depending on local standards)
<b>YEAR</b>	Year
<b>DATE</b> 8888	Measurement date
8888 AM	Measurement time
<b>Code</b>	Calibration code
	Alarm
	Control solution
	Bluetooth communication
<b>cat dog</b>	Species (cat or dog)
	Display Temperature Error



### Precautions for use

- Fresh capillary whole blood should be used for accurate measurement.
- Be careful to not drop the meter. Strong external shocks should be avoided.
- The meter should be stored in a clean, dry place away from direct sunlight and should not be exposed to too high or too low temperatures.
- For proper operation of the meter, do not use it in an environment that may cause static electricity or near mobile phones, cordless phones, walkie-talkies, radio transmitters, or other electrical equipment that may cause electromagnetic radiation.
- If a low battery alarm turns up, the batteries must be replaced with a new batteries.
- For the meter, the test strip and the control solution marked exclusively for the device should only be used.
- Test strips are for a single use. Reuse is prohibited.
- An inaccurate blood glucose measurement result may be obtained with a test strip after its expiration date. Check the expiration date before measuring blood glucose and discard expired test strips.
- The test strip should be stored in a cool and dry place and should not be exposed to heat or humidity.
- Do not replace the bottle for test strips with another bottle to preserve quality.
- For the details of the test strip, refer to the test strip instruction manual.



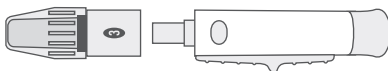
- Measure blood glucose or perform a control solution test in a place where there is least influence of light, noise, temperature and humidity.
- A control solution should be used regularly to ensure that the meter and test strip are working properly.
- In case of an incident related to cyber security, please contact the customer service center.




## Lancing device & Lancet


### Lancing device

**Product code** LDE3 : 02-1901



### Lancing device manufacturer

 **Sterilance Medical(Suzhou) Inc.**  
No.168 PutuoShan Road, New District 215153 Suzhou,  
Jiangsu, P.R. China  
[www.sterilance.com](http://www.sterilance.com)

 **Emergo Europe**  
Prinsessegracht 20, 2514 AP The Hague, The Netherlands  
Tel : +31.70.345.8570  
E-Mail : [EmergoEurope@ul.com](mailto:EmergoEurope@ul.com)




---


### Lancet

**Product code** Soft 28G : 01-0128



### Lancet manufacturer

 **Sterilance Medical(Suzhou) Inc.**  
No.168 PutuoShan Road, New District 215153 Suzhou,  
Jiangsu, P.R. China  
[www.sterilance.com](http://www.sterilance.com)

 **Emergo Europe**  
Prinsessegracht 20, 2514 AP The Hague, The Netherlands  
Tel : +31.70.345.8570  
E-Mail : [EmergoEurope@ul.com](mailto:EmergoEurope@ul.com)

STERILE R



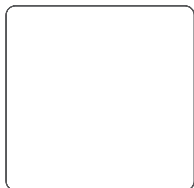
### **Precautions for lancing device and lancet**

- Lancets are disposable products and reuse is prohibited.  
Do not reuse even for the same animal.
- Use new, sterilized lancets.
- Do not leave lancets being inserted into the lancing device after measuring blood glucose.
- After using a lancet, insert it firmly into the protective cap and dispose of it.
- When disposing of used lancets, dispose of them in an anti-contamination disposal bag to prevent infection or according to applicable local government laws and regulations, or follow the guidance of a healthcare professional.
- Keep lancets out of the reach of children as there is a choking hazard if swallowed.
- Do not use if a protective cap of a lancet is broken or if the needle of a lancet is exposed outside the protective cap.

## Usage Method

### Description of modes

Distinguish the modes according to the LCD display.



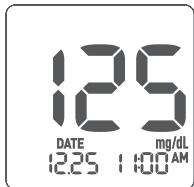
#### Standby Mode

The screen is off.



#### Measurement Mode

Blood glucose measurement status. See "Measurement Mode."



#### Memory Mode

This is a state where you can check the stored blood glucose measurement results. See "Memory Mode."





#### Setting Mode

This is a state where you can change the settings of the meter. See "Setting Mode."

## Description of buttons

Describes the mode buttons and left/right buttons of the GluNEO Pet meter.

Button	Function	Operation
 <b>Mode Button</b>	Switches from Standby Mode to Memory Mode.	Press and release the button.
	Switches from Memory Mode to Standby Mode.	
	It will change to Setting Mode.	Press and hold for at least 3 seconds.
	Select an option from Setting Mode and go to the next step for setup.	Press and release the button.
	The options are saved in Setting Mode and changes to Standby Mode.	Press and hold for at least 3 seconds.
 <b>[Left/Right buttons]</b>	Displays blood glucose measurement results or an average measured value in Memory Mode.	Press and release the button.
	Change options in Setting Mode.	

## Measurement Mode

### 1. Preparation before measurement

- Set the meter correctly before taking a blood glucose measurement for the first time. (See "Setting Mode.")
- Prepare a GluNEO Pet meter, GluNEO Pet test strip, lancing device, and lancet.
- Before drawing blood, wash your hands and test site in warm, clean water using soap. Thoroughly dry your hands and test site of your pet.

### 2. Measurement Procedure

- Use only the GluNEO Pet test strips.
- Do not pre-inject blood or control solution before inserting the test strip into the meter.
- Check the expiration date on the test strip bottle. Do not use if the expiration date passed.
- Take a test strip out of the bottle, close the cap, and use immediately



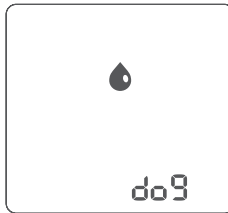
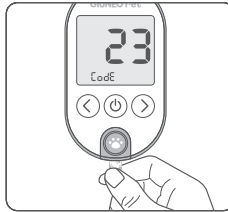
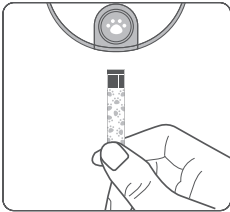
### Step 1

Insert a test strip into the meter. At this time, make sure that the contact terminal of the test strip is facing upward and insert it all the way.

When the test strip is inserted, the screen turns on and the calibration code is displayed. Make sure that the calibration code displayed on the screen matches the calibration code printed on the bottle of the test strip.

When the calibration code disappears and the blood injection symbol (🩸) flashes, species(dog or cat) is displayed.

If press and hold the right button for 3 seconds, the species to be tested will change with "beep" sound. Then, collect blood from the test site.





### Precautions

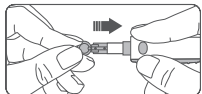
- Do not use if the test strip is wet, bent or scratched, or if the recognition label of a calibration code (back of the test strip) is defective.
- After taking a test strip out of the storage bottle, it should be used immediately, and the cap of the bottle should be closed securely.
- Once used, test strips cannot be reused, and used test strips should be discarded immediately and do not put them back into the storage bottle.
- Do not touch or damage the "blood inlet" of the test strip with your hands.
- If the calibration code displayed on the screen of the meter and the calibration code printed on the bottle of the test strip are different, do not use it and contact the customer service center. If the calibration code cannot be checked, the test strip must be removed and reinserted to check the code.
- If blood is injected before the blood injection display appears on the screen, an error message appears on the screen and blood glucose cannot be measured. (If an error occurs, check "Troubleshooting.")
- If blood is not injected properly into the test strip, blood glucose measurement may not start, an error message may be displayed on the screen, or an inaccurate blood glucose measurement result will be obtained. (If an error occurs, check "Troubleshooting.")
- If blood is injected from above with the meter upside down, blood may flow into the device, causing errors and device failure.



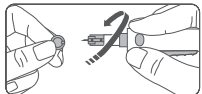
### How to use a lancing device and lancet



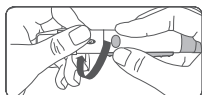
- ① Wash hands with soap and clean water, rinse and dry thoroughly. Twist off the End Cap of the Lancing Device.



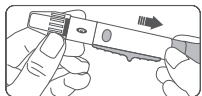
- ② Insert a Lancet into the Lancet Holder.



- ③ Twist the Lancet Protective Cover until it separates from the Lancet. Save the Protective Cover for removal and disposal of used Lancet.



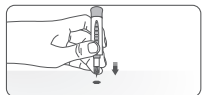
- ④ Adjust the depth of puncture setting.



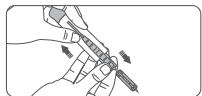
- ⑤ Pull the Cocking Handle out until a click is heard.



- ⑥ Press the Lancing Device firmly against test site to be lanced. Press the Release Button.



- ⑦ Remove End Cap and use the saved Lancet Protective Cover to recap Lancet.



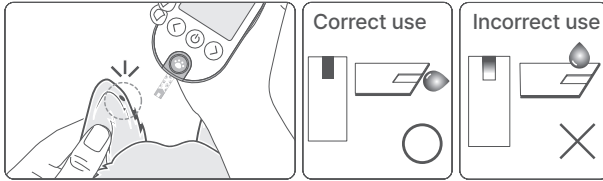
- ⑧ Push forward the Ejector to dispose of the used Lancet in appropriate bottle.

### **Precautions**

- Lancets are for single use only.
- If you have cleaned the blood collection area with an alcohol pad, draw blood after alcohol has evaporated sufficiently.
- Once the sample is collected, it should be measured immediately.

## Step 2

Place the blood collection site close to the blood inlet so that the collected blood flows into the blood inlet on the test strip. Do not remove the blood collection site until you hear a “beep” sound.

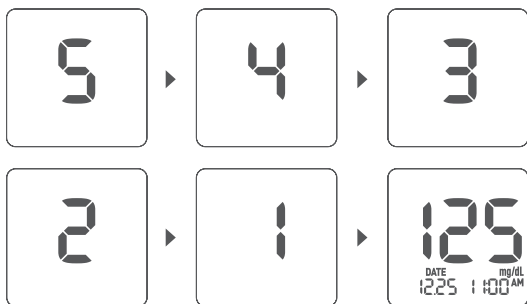


## Precautions

- Observe the recommended amount of blood samples. Too much blood can contaminate the meter and cause it to malfunction.
- If the measurement does not start, do not add any more blood to the test strip. Remove the test strip and insert a new one to restart the measurement procedure.
- If blood is not injected within 3 minutes after inserting the test strip, the meter screen will turn off. In this case, restart the measurement procedure.
- If the blood sample is not completely filled, inaccurate results may be obtained.
- If blood spreads or flows, do not use these blood samples. Dry the affected area and gently squeeze out a drop or take blood from a new area.

### Step 3

When the blood glucose measurement starts with a “beep” sound, the screen will display the measurement time counting down from 5 to 1. After the measurement is completed, the blood glucose measurement result is displayed on the screen. (The measurement date is displayed.)







Set the pet status after the blood glucose measurement result is displayed. (This function cannot be used if the screen is turned off by removing the test strip or pressing the mode button after the measurement is completed.)

While the measured value is displayed, pressing the left and right buttons displays the pet's current state.

Select the pet's current status with the left and right buttons, and then press the mode button.



-  When the pet's current status is before meal
-  When the pet's current status is after meal
-  When the pet's current status is fasting more than 8 hours
-  When using control solution

Slide the ejection slide to remove the used test strip.

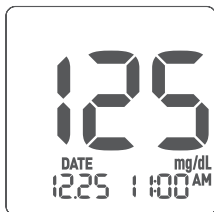
After the measurement is finished, dispose of the used test strips and disposable manual lancets in a safe place.

### Precautions

- The measuring range of the system is 20–600 mg/dL. If the blood glucose measurement result is less than 20 mg/dL, "Lo" is displayed, and if it exceeds 600 mg/dL, "HI" is displayed on the screen. (See "Troubleshooting.")
- If the hematocrit is less than 20% or higher than 65%, blood glucose readings may be affected.
- Discard used test strips and disposable lancets according to local government regulations.



### 3. Result interpretation



After blood glucose measurement, the blood glucose measurement result is displayed.

After measuring blood glucose, the blood glucose measurement result is displayed on the screen of the meter. The measuring range of the system is 20–600 mg/dL (1.1–33.3 mmol/L). It is displayed on the screen as “Lo” if the blood glucose measurement result is less than 20 mg/dL (1.1 mmol/L), and as “HI” if the result is higher than 600 mg/dL (33.3 mmol/L). If “Lo” or “HI” is displayed, take a blood glucose measurement again.

- The normal fasting value for blood glucose in dogs and cats is 75–120 mg/dL (4.2–6.7 mmol/L). (Merck Veterinary Manual: Diabetes Mellitus in Dogs and Cats by Divid Bruyette, DVM, DACVIM, Anivive Lifesciences, Inc. Revised Jul 2019/Modified Oct 2022)

 **Warning**

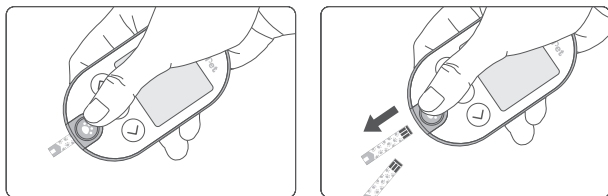
- If the blood glucose measurement result is "Lo" or "HI" even after repeating the measurement, or if you have symptoms that are different from the usual, consult a veterinarian immediately.
- Blood glucose measurement results may be displayed in mg/dL or mmol/L (depending on local standards). Incorrect units of measurement can mislead measurement results and lead to incorrect interpretations. If you are unsure of the unit of measurement, consult your veterinarian.

**Precautions for abnormal blood glucose measurement results**

- If "LO" is displays on the screen, the blood glucose is very low.
- If "HI" is displays on the screen, the blood glucose is very high.
- If your pet's result is unusually high or low, or do not match the way your pet behaves, repeat the test with a new test strip.
- If the hematocrit is very high (exceed 65%) or very low (less than 20%), inaccurate measurement results may occur.
- If you think your blood glucose test result is different from your current physical condition, please confirm the check points below.
- Check the expiration date of the test strip.
- Make sure the test strip bottle has been closed tightly and stored in a cool, dry place.
- Test the system with a control solution to ensure that it is working correctly.

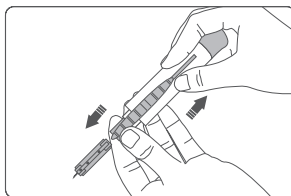
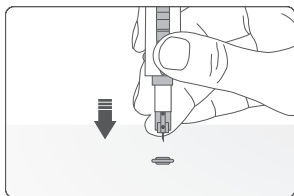
**Function of ejecting a test strip**

1. After checking the blood glucose measurement result, you do not need to pull the test strip out by hand. Push the ejection slide forward as shown in the figure to eject the used test strip. Be careful not to push the ejection slide forward too hard, as this may cause a malfunction.
2. Please dispose of the discharged test strip safe and hygienically. Used test strips may be considered biohazardous waste in your area. Consult your local representative for proper disposal methods.



### Function of discharging lancet

1. After checking the blood glucose measurement result, poke the lancet being plugged into the lancing device, into the protective cap.
2. Pull back the loading handle of the lancing device and slide the removal button forward to remove the lancet.
3. Please dispose of discharged lancets hygienically safe. Used lancets may be considered biohazardous waste in your area. Consult your local representative for proper disposal.



## Sampling site



The figure above shows the areas that can be tested using the GluNEO Pet meter.

Capillary blood samples in both dogs and cats can be obtained from the marginal ear vein.

Warming the test site increase blood flow and helps draw blood. Gently rub the test site or apply a warm, non-hot cloth to the test site. If using a wet cloth, wrap it in a plastic bag, etc. to prevent the test site from getting wet.

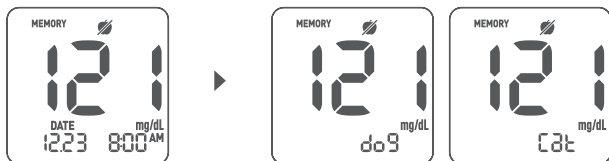
## Memory Mode (Recall Stored Measurement Results)

The GluNEO Pet meter stores up to 1000 blood glucose measurement results along with the measurement date, time and pet status, and can recall and check the average values according to the blood glucose measurement results and determined period. If 1000 blood glucose measurement results are stored in the memory, the oldest blood glucose measurement results are deleted and a new blood glucose measurement result is saved as further blood glucose measurement is performed.

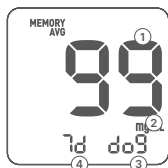
- Press the mode button to display the most recent blood glucose measurement result.
- You can check the blood glucose measurement results and the average measurement for the period of three measurements using the left and right buttons. The average measurement does not include the measurement results using a control solution.
- Press > (right button) to display the blood glucose measurement results in the order from the latest to the oldest. Once you scroll through all the stored glucose measurements, you will see the average measurement.



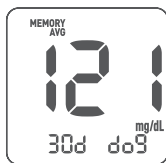
- In the result display, time and species are displayed alternately depending on the measured species.



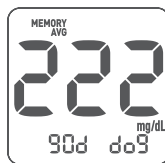
- Press < (left button) to display the average measured value. Once you scroll through all the average measurements, blood glucose measurement results are displayed from oldest to most recent. Control solution measurement results are not included in the average measurement.



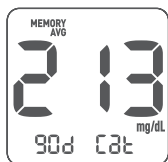
Dog's average measurement for the last 7 days



Dog's average measurement for the last 30 days



Dog's average measurement for the last 90 days



Cat's average measurement for the last 90 days



Cat's average measurement for the last 30 days



Cat's average measurement for the last 7 days

- ① Average measurement values
- ② Measurement unit
- ③ Species(dog or cat)
- ④ Average number of days (see "Setting Mode")



## Setting Mode

If you do not set the date and time of the meter at the time of initial purchase or battery replacement, the average measurement may not be calculated normally.

- Press and hold the mode button on the GluNEO Pet meter for longer than 3 seconds. After a while, it will switch to Setting Mode.
- You can change the options as below in the Setting Mode.

Setting	Options	Function
BEEP	ON/OFF	ON – Beep sound on OFF – Beep sound off
Bluetooth	ON/OFF	ON – Bluetooth enable OFF – Bluetooth disable
YEAR	2023 ~ 2063	set until 2063
DATE	Day - Month	set day and month
TIME	Hour, Minute	set hours and minutes

Setting	Options	Function
Alarm Time 1 (Alarm1)	OFF	First alarm time not set. Pressing the mode button exits the Setting Mode.
	ON	You can set the first alarm time. Time setting is displayed when the mode button is pressed.
	Hour, Minute	set alarm time
Alarm Time 2 (Alarm2)	OFF	Fourth alarm time not set. Pressing the mode button exits the Setting Mode.
	ON	You can set the fourth alarm time. Time setting is displayed when the mode button is pressed.
	Hour, Minute	set alarm time
Alarm Time 3 (Alarm3)	OFF	Third alarm time not set. Pressing the mode button exits the Setting Mode.
	ON	You can set the third alarm time. Time setting is displayed when the mode button is pressed.
	Hour, Minute	set alarm time

• **Guidance on the setting method and procedure**

**Entering  
Setting Mode**



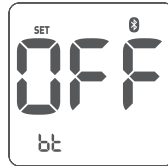
Press the Mode button for at least 3 seconds. After a while, the screen will change.

**BEEP**



Press the left and right buttons to select ON/OFF, and then press the Mode button.

**Bluetooth**



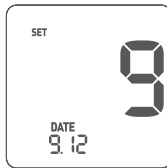
Press the left and right buttons to select ON/OFF, and then press the Mode button.

**Year**



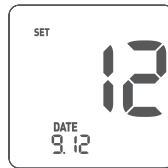
Press the left and right buttons to select the year, and then press the Mode button.

**Date(Month)**



Press the left and right buttons to select the month, and then press the Mode button.

**Date(Day)**



Press the left and right buttons to select the day, and then press the Mode button.

### Hour

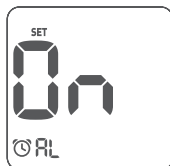


Press the left and right buttons to select the year, and then press the Mode button.

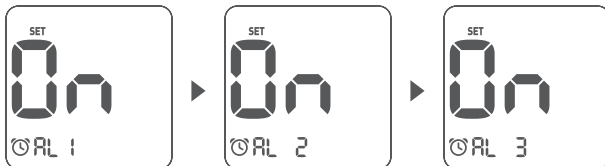
### Minute



Press the left and right buttons to select the month, and then press the Mode button.

**• Guidance on the setting method and procedure****Alarm Function**

Press the left and right buttons to select ON/OFF, and then press the Mode button.  
If the alarm function is set to OFF, you cannot set the alarm time.

**Alarm Function ON**

Press the left and right buttons to select ON/OFF, and then press the Mode button.

- If you set alarm 1 to OFF, it changes to the alarm 2 setting, and alarm 1 cannot be used.
- If you set alarm 2 to OFF, it changes to the alarm 3 setting, and alarm 2 cannot be used.
- If you set alarm 3 to OFF, alarm 3 cannot be used, and it switches to a Standby Mode.

### Alarm 1 ON (Alarm2 ~ Alarm 3 settings are also same)



Press the left and right buttons to select the hour, and then press the Mode button.



Press the left and right buttons to select the minute, and then press the Mode button.

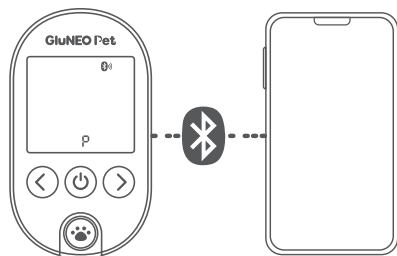
### How to exit the Setting Mode

- Press the Mode button repeatedly until the "End" displays.
- In the Setting Mode, press the mode button for longer than 3 seconds to switch to a Standby Mode.
- If you do not press any button for longer than 1 minute, it will go into a Standby Mode.

### Bluetooth Communication

GluNEO Pet meter can be connected wirelessly to mobile devices with Bluetooth communication function. Your mobile device must have an application that can receive data.

- Pairing : The connection process between GluNEO Pet meter and a mobile device is called pairing. If you pair the device once the first time you use it, it will automatically connect thereafter.
- App(Application) : The GluNEO Pet meter works with the mobile app. Download and install the app from app store. Please refer to the user manual provided by the app for more information on how to use the app.




### 1. Preparation

GluNEO Pet meter	Check if there are stored blood glucose measurement results. Check whether the Bluetooth function is set to ON (Refer to "Setting Mode")
Mobile Device	Make sure Bluetooth is turned on and run the app.



## 2. Attempt to connect

---


GluNEO Pet meter	<p>Connect as close as possible to your mobile device. Press the Left button on the meter for at least 3 seconds until you hear the beep. 📶 (Bluetooth symbol) is displayed and 'P' blinks.</p>
	

Mobile Device	<p>Search for the GluNEO Pet meter according to the instruction in the app.</p>
---------------	---

---

## 3. Pairing successful

---

GluNEO Pet meter	<p>If pairing is successful, the stored blood glucose measurement results will be transmitted, and when completed, a beep will sound and the screen will turn off. If pairing fails, 'PAIR FAIL' is displayed. Start again from '1.Preparation'</p>
	

Mobile Device	<p>When the product name appears in the app, select it according to the description. Pairing is complete.</p>
---------------	---

---







GluNEO Pet meter can only be paired with one mobile device at a time. When pairing with another mobile device, existing pairing will be deleted.

#### 4. Data transfer

You must be paired with a mobile device and the Bluetooth function must be turned on. After glucose measurement, the blood glucose measurement result is transmitted by removing the glucose test strip or pressing the Mode button.

The screen displays  (Bluetooth symbol)  (Transfer symbol) and 'C' blinks.



GluNEO Pet meter

If the transfer fails, 'SYnC FAIL' is displayed. Please resend in Memory Mode. Pairing is complete.



If the transfer continues to fail, restart with '2. Attempt to connect'. If the transfer fails repeatedly, please contact the customer service center.



## GluNEO Pet INSTRUCTIONS FOR USE

---

---

### Mobile Device

Run the app after measuring blood glucose. Data is automatically received when paired with the GluNEO Pet meter. Check the blood glucose measurement results after the data is transmitted.

---

Even in Memory Mode, data can be transferred by pressing the Mode button. (Paired status, Bluetooth function ON)

### Precautions for Bluetooth communication

- You can keep your cyber assets safer by keeping your mobile device's anti-virus program up to date.
- The data received from the blood glucose meter does not store any personal information other than the blood glucose measurement results.
- Turn off the wireless communication function in places where wireless use is not permitted, such as hospitals or airplanes.
- Some smartphones may not be able to use the app. (Please refer to the app user manual for details.)



## Maintenance and troubleshooting

### Quality control

To purchase GluNEO Pet control solution, please contact your retailer/seller or customer service. By comparing the control solution test results with the range printed on the test strip bottle, you can verify that the system is working properly and that you are performing the correct blood glucose measurement. It is very important to perform routine tests to ensure accurate results.

Control solution testing is recommended in the following cases:

- When the meter is used for the first time or the test strip is newly opened.
- When the accuracy of the meter or test strips is in doubt
- If the meter is dropped and impacted.
- If the test strip is considered to be damaged.
- If you want to check if you are doing the test correctly.
- When using the meter after cleaning and disinfection.

### How to use the product

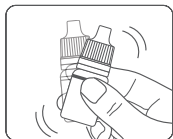
Check the expiration date of the test strip and control solution.

Place the meter on a leveled surface.

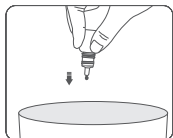
Store the meter, test strip, and control solution at room temperature for at least 30 minutes before using.

GluNEO Pet INSTRUCTIONS FOR USE

---



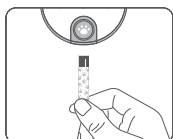
Shake the control solution lightly before use.



Open the cap of the bottle, remove the first drop.



Wipe the tip of the bottle clean with a tissue paper.



Use a non-expired test strip printed on the bottle of the test strip. Insert the test strip firmly into the meter. Insert it deep in the direction of the arrow on the cover of a test strip. Do not insert the test strip upside down.



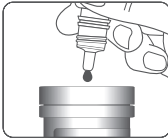
When the test strip is inserted into the meter, it autom owers on and displays the code and temperature.



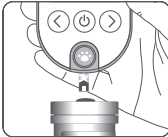
Make sure that the code matches the code number on the test strip (e.g. 23)



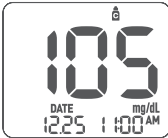
The screen changes to Measurement Mode and blood symbol blinks.



Put a drop of the control solution on the clean, dry surface (e.g. cap of the test strip bottle).



When the dropped solution is injected into the test strip, the measurement result is displayed in 5 seconds. Check the measurement results and the range indicated on the bottle of control solution. The result must be within that range.



With the measurement result displayed, press < > (left and right buttons) to select the control solution symbol and press Mode button or remove the glucose test strip to store the measurement result and the control solution symbol together.

Discard the used test strip, wipe the end of the control solution bottle with a tissue paper, and be sure to close the cap. If the control solution test result is out of range printed on the test strip bottle, take out a new test strip, and perform the test again, and if there is still a problem, contact the customer service center.



### **Precautions when using the control solution**

- Use only a control solution specific for the GluNEO Pet Blood Glucose Monitoring System.
- Be sure to close the bottle cap after using the control solution.
- Do not eat or swallow the control solution.
- Control solution can leave stains on clothes. Wash immediately with soapy water to avoid stains.
- Use only to perform an inspection of the system.

### **Maintenance of the meter**

Whenever you replace the batteries in the meter, an error message may occur if there is a problem with the device. (See "Troubleshooting")

### **Cleaning and disinfecting the meter**

Keep dust, blood, control solution, and liquids away from the GluNEO Pet meter, test strip port, or communication port. If contaminants such as blood or dust get on the surface after using the meter, remove it with a soft cloth or tissue paper. Do not immerse the meter directly in liquid when cleaning. Be careful not to allow liquid to get inside the device. Never use highly corrosive organic solutions such as benzene or acetone as they may damage the glucose meter. When using alcohol, do not pour the solution directly onto the glucose meter, but use a small amount on a soft cloth or tissue paper.

### **Cleaning and disinfection methods**

1. Make sure the meter is turned off.
2. Dampen a soft cloth with the following cleaning solution and carefully wipe the surface of the meter.
  - When washing: Use a neutral detergent diluted with water.



- Cleaning or disinfection area: Around the test strip insertion port.
3. Use a soft cloth to dry the meter thoroughly.

### **How to store**

After the blood glucose measurement is finished, keep the components out of the reach of children in the included carrying bag to prevent the components from being lost.

### **Meter**

- Store all components in a cool, dry place away from direct sunlight or heat.
- Store in a place safe from vibration, shock, and in not-inclined places.
- Keep out of contact with water and away from dust and moisture.
- Strong electromagnetic waves may affect normal operation. Keep away from the sources of strong electromagnetic waves. Please be especially careful when measuring blood glucose.

### **Test strip**

- Store in a cool, dry place between 2-30°C (36-86°F). Store away from direct sunlight and do not freeze.
- Store only in the original bottle. Do not use different bottles or mix test strips.
- Always close the bottle cap securely after use.
- Take note of the date of disposal. This date is 6 months from the date the test strip's bottle is first opened. After the disposal date, discard the test strip and bottle.
- Do not use test strips after the expiration date printed on the bottle as they may produce inaccurate results.
- Do not bend, cut or alter the test strip.



#### GluNEO Pet INSTRUCTIONS FOR USE

---

- Do not touch the test strip with wet hands. Keep dust, food, and water away.
- Do not allow dust, food, and water on the recognition label (on the back of the test strip) of the calibration code.
- For detailed instructions on test strips, refer to the test strip manual.

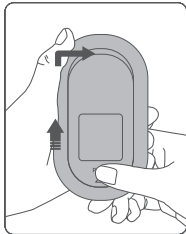




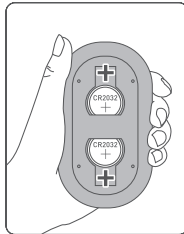
## Battery Replacement

If the low battery symbol is displayed on the screen or the screen does not turn on while the meter is in use, the batteries have reached the end of its life. Replace the batteries.

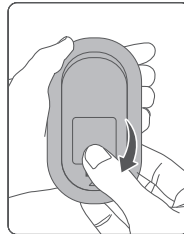
- The GluNEO Pet meter uses two 3V lithium batteries (CR2032).
- Even if the batteries are replaced, the stored blood glucose measurement result will not be deleted.
- Purchase and use batteries compatible with CR2032 type.
- Open the battery compartment cover and replace the batteries, paying attention to its (+) and (-) polarity. Insert it with the (+) side visible.
- After replacing the batteries, reset the date and time of the glucose meter.
- The battery compartment cover cannot be completely removed.



1. Press and hold the triangular mark on the battery compartment cover and slide it up to open.



2. Insert the batteries with the (+) side facing up.






3. Close the battery compartment cover by sliding it down.





### **Precautions for battery replacement**

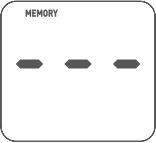




- Keep new and used batteries out of the reach of children.
- Using batteries that is not compatible with CR2032 type may cause malfunction.
- Replace two batteries with the same brand at the same time as much as possible.
- Battery life may vary depending on factors such as the temperature and battery manufacturer.
- If the low battery symbol is displayed but the batteries are not replaced, there may be problems saving the measurement results.
- If the date and time are not set after battery replacement, there may be problems with the calculation of the average measured value.
- Dispose of used batteries according to local regulations.

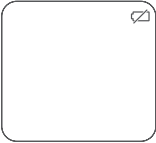


### Troubleshooting


- If the below mentioned messages appear on the screen while using the GluNEO Pet Blood Glucose Monitoring System, please take measures according to the cause. If the problem is not resolved, please contact Customer Service. Do not disassemble or attempt to repair the meter on your own.
- If you have any questions about the product or in the event of an accident related to cybersecurity, please contact customer service.

LCD	Cause	Solution
	There is a problem with the meter. (e.g. H/W defect, Strip connector wear)	Remove the test strip, if inserted, and turn the meter back on after replacing the batteries. If the problem persists, contact Customer Service.
	If you have inserted a test strip that has already been used. When a wet test strip is inserted.	Replace the test strip with a new one and take the blood glucose measurement again.
	Insufficient amount of injected blood or failure to inject normally.	After checking the "Measurement Mode," replace the test strip with a new one and measure blood glucose again.

LCD	Cause	Solution
	<p>Test strip is damaged.</p>	<p>Replace the test strip with a new one and take the blood glucose measurement again.</p>
	<p>Injecting blood sample before the blood waiting symbol (⬇️) is displayed.</p>	<p>Reinsert a new test strip and wait until the blood injection symbol is displayed. When the blood injection symbol is displayed, inject blood.</p>
	<p>Insert the test strip with the color label on the back of the test strip dirty or damaged. Incompatible product's test strip is used.</p>	<p>Take out a new test strip and take the blood glucose measurement again. Make sure the test strips are specified for the system.</p>
	<p>Problem recognizing the color label of test strip due to direct sunlight.</p>	<p>Move to a place away from direct sunlight and the blood glucose measurement again.</p>

LCD	Cause	Solution
 <p>MEMORY — — —</p>	<p>There is no stored blood glucose measurement result</p>	<p>Insert a test strip to measure.</p>
 <p>▲ Lo</p>	<p>The measurement temperature is lower than 50°F(10°C)</p>	<p>Move to an area that is not out of the temperature limit and take the blood glucose measurement again after 30 minutes.</p>
 <p>▲ Hi</p>	<p>The measurement temperature is higher than 104°F(40°C)</p>	<p>Move to an area that is not out of the temperature limit and take the blood glucose measurement again after 30 minutes.</p>
 <p>Lo DATE 12.25 11:00 AM</p>	<p>The blood glucose measurement result is less than 20mg/dL (1.1mmol/L).</p>	<p>If the message continues to appear after 2-3 repeated measurements, please contact your veterinarian for further help.</p>
 <p>Hi DATE 12.25 11:00 AM</p>	<p>The blood glucose measurement result exceeds 600mg/dL (33.3mmol/L).</p>	<p>If the message continues to appear after 2-3 repeated measurements, please contact your veterinarian for further help.</p>

LCD	Cause	Solution
	Low battery warning.	Battery replacement time is approaching. Replace the batteries (CR2032, 2EA) immediately.
	Low battery.	Replace the batteries (CR2032, 2EA) immediately.
Screen not turn on	The batteries run out. There is a problem with the meter.	Replace the batteries. If the problem persists, contact Customer Service Center.
Measurement does not start	The amount of blood injected is insufficient. The test strip is damaged.	After checking the "Measurement Mode," replace the test strip with a new one and measure blood glucose again.
	Bluetooth communication error. - If pairing with the mobile device fails.	Check the Bluetooth communication setting of blood glucose meter. (Refer to 'Setting Mode') Run pairing again.

LCD	Cause	Solution
	Bluetooth communication error. - If pairing with a mobile device fails. (If it is not a previously paired mobile device)	Run pairing again.

## Technical Information

### Product specifications

<b>Sample type</b>	Fresh capillary whole blood, venous whole blood
<b>Measuring range</b>	20~600 mg/dL (1.1~33.3 mmol/L)
<b>Measuring time</b>	5 seconds
<b>Memory capacity</b>	1,000 blood glucose results
<b>Dimensions (mm)</b>	51±1 X 89±1 X 17±1mm (W X H X D)
<b>Weight (g)</b>	48±1g (including Batteries)
<b>Power supply</b>	3V Lithium Batteries 2EA (CR2032)
<b>Operating Temperature</b>	50~104°F (10~40°C)
<b>Operating Humidity</b>	10~90%
<b>Test strips storage condition</b>	36~86°F (2~30°C)
<b>Sample volume</b>	0.5µL
<b>Hematocrit</b>	20~65%
<b>Interface</b>	Bluetooth Low Energy



















**Measuring principle**

Glucose in the blood is oxidized to gluconic acid by catalysis of glucose dehydrogenase (GDH-FAD) in the enzyme layer of the test strip, and FAD, the active site of GDH-FAD, receives electrons and is reduced to FADH<sub>2</sub>. In this process, through the oxidation–reduction (redox) reaction of the electron transfer mediator and FADH<sub>2</sub>, FADH<sub>2</sub> is oxidized to FAD, and the electron transfer mediator is reduced. The electron transfer mediator in the reduced state is oxidized on the electrode surface where voltage is applied through the meter, generating an electric current. Since the resultant current is proportional to the glucose concentration, the meter measures the current to determine the blood glucose concentration.

**Limitations**

The meter may be limited in use owing to wear and tear on the parts at the test strip port. After replacing the batteries, if the screen does not turn on or an "Er1" message is displayed when the test strip is inserted, the machine can no longer be used. If the same phenomenon is repeated, contact Customer Service Center.

## Description of symbols

	Consult Instructions for use
	Use by date
	Caution, Refer to warnings and safety related descriptions
	Temperature limit
	Batch Code
	Serial Number
	In vitro diagnostic medical device
	Catalog number
	Reuse is prohibited
	Model number
	Country of manufacture, Made in Korea
	Date of manufacture
	Manufacturer
	Avoid sunlight
	Separate collection of electrical and electronic equipment waste
	Bluetooth® wireless technology

### **Consumables**

- Test Strip: GluNEO Pet Test Strip
- Disposable manual lancet
- Control solution: GluNEO Pet control solution

Please contact the place of your purchase or customer service center.

### **Disposal**

Dispose the used meter after removing the batteries in accordance with local regulations regarding the disposal of electrical and electronic equipment. Dispose the used batteries according to local environmental regulations. Dispose of used test strips in sealed bottles according to local regulations. Always dispose of used disposable manual lancets in accordance with local regulations.

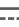
## GluNEO Pet INSTRUCTIONS FOR USE

---

This device complies with part 15 of the FCC Rules. Operation is subject to the following two conditions:

(1) This device may not cause harmful interference, and (2) this device must accept any interference received, including interference that may cause undesired operation.

[47 CFR 15.21] Pursuant to Section 15.21 of the FCC rules, changes or modifications to a Product by the user that are not expressly approved by the party responsible for compliance could void the user's authority to operate the equipment. The device meets the FCC Radio Frequency Emission Guidelines. Information on the product is on file with the FCC and can be found by inputting such Product's FCC ID (which can be found on the device) into the FCC ID Search form available at <https://www.fcc.gov/oet/ea/fccid>.

Product : GluNEO Pet  
Model : OG-SH02-PEM  
Rating : DC 3 V , 12 mA  
FCC ID : WSX-OG-SH02-PEM  
Frequency : 2 402 ~ 2 480 MHz (BLE)

## MEMO

## MEMO

## MEMO

## MEMO



## MEMO

## MEMO



 **OSANG Healthcare Co., Ltd.**

132, Anyangcheondong-ro, Dongan-gu,  
Anyang-si, Gyeonggi-do, Korea (14040)

[www.osanghc.com](http://www.osanghc.com)

Tel : +(82)31.460.0300

E-Mail : [ohc\\_cs@osanghc.com](mailto:ohc_cs@osanghc.com)

IVD

REF OG-SH02-PE ISH02PEM.04 Rev.2024-04 (01)