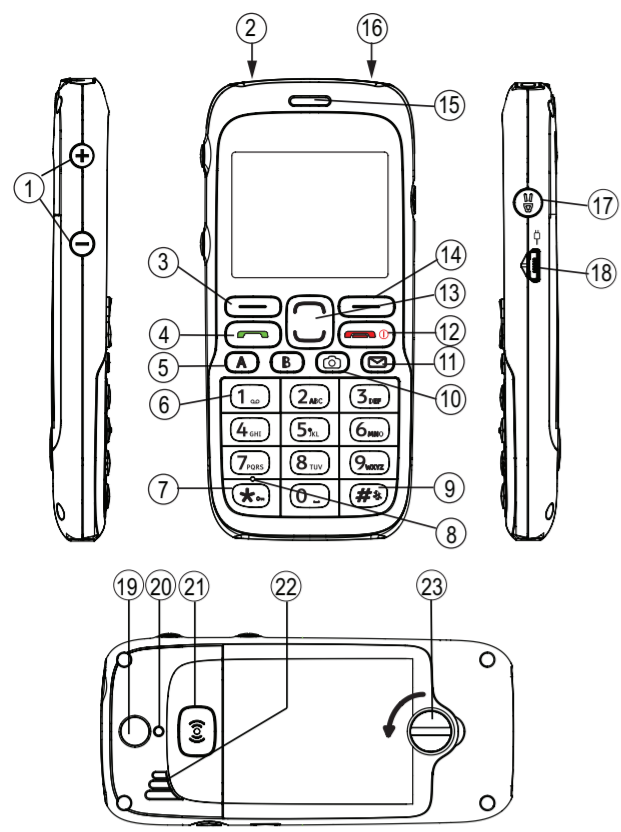


Doro PhoneEasy® 520X

Quick Start Guide



doro

- | | |
|---------------------------|----------------------------|
| 1. Volume control | 14. Right selection button |
| 2. Headset socket | 15. Earpiece |
| 3. Left selection button | 16. Torch |
| 4. Call button | 17. Torch button |
| 5. Speed dial | 18. Charging socket |
| 6. Voice mail | 19. Camera lens |
| 7. Key lock | 20. Camera flash |
| 8. Microphone | 21. Assistance button |
| 9. Silent/Input method | 22. Loudspeaker |
| 10. Camera shortcut | 23. Battery cover/lock |
| 11. SMS shortcut | 24. Lanyard |
| 12. End call/Power on/off | 25. Charging stand |
| 13. Arrow buttons | |



The full User Guide can be downloaded at www.dorocanada.com

1.

Getting Started

Charging

WARNING

Only use batteries, charger and accessories that have been approved for use with this particular model. Connecting other accessories may be dangerous and may invalidate the phone's type approval and guarantee.

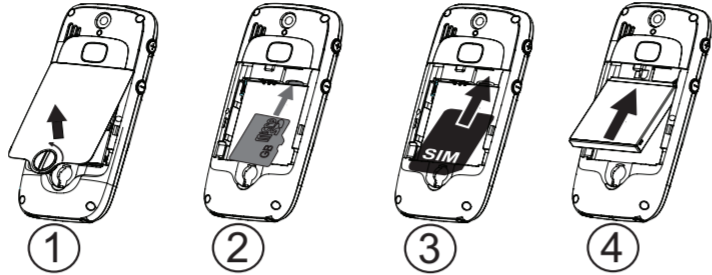
When the battery is running low, is displayed and a warning signal is heard. To charge the battery, connect the AC power adapter to a wall socket and to the charging socket on the phone.

Important!

Turn off the phone and disconnect the charger before removing the battery cover.

Installing the SIM card and battery

The SIM card and battery are normally pre-installed for you. Follow these instructions should you ever need to access them yourself.



- Remove the battery cover and the battery if it is already installed. Unlock the battery cover by turning the screw a quarter of a turn counter clockwise.
- Optional: Insert the memory card into the slot under the SIM card holder. Make sure that the memory card contacts are facing inwards and push the card in, until you hear a click. Take care not to scratch or bend the contacts on the card. To remove or replace the card, push the card in until you hear a click and then pull the card out.
- Insert the SIM card by gently sliding it into the holder. Make sure that the SIM card's contacts are facing inwards and that the cut off corner is pointing downwards. Take care not to scratch or bend the contacts on the SIM card.
- Insert the battery by sliding it into the battery compartment with the contacts facing upwards to the left. Replace the battery cover and lock it by turning the screw a quarter of a turn clockwise.

Important!

Use only compatible memory cards for use with this device. Compatible card type: microSD, microSDHC. Incompatible cards may damage the card and the device and corrupt data stored on the card. Memory cards are sold separately.

2.

Getting Started

Turning phone on & off

Press and hold the red button on the phone to turn it on/off. It takes several seconds so keep holding until you hear the sound.

Setting the language, time and date

The default language is determined by the SIM card. See the full manual on how to change language, time and date.

Start-up wizard

When starting the telephone for the first time, you can use the Start-up wizard to set some basic settings.

Press **Yes** to change or press **No** if you don't want to change.

See *Start-up wizard* in the full manual.

Making a call

- Enter the phone number.
- Press to start the call.
- Press to end the call.

Note!

There is no dial tone. Simply have the phone turned on and it is ready for use.

3.

Getting Started

Call log

Received, missed, and dialled calls are saved in a combined call log. 20 calls of each type can be stored in the log. For multiple calls related to the same number, only the most recent call is saved.

Retrieving and dialling

- Press .
- Use / to scroll through the call log
 - = Received call
 - = Dialled call
 - = Missed call
- Press to dial the highlighted number.

Using Phonebook

The Phonebook can store 300 entries with 3 phone numbers in each entry.

Creating a phonebook entry

- Press **Menu**, scroll to and press **OK**.
 - Select **-New contact-** and press **Add**.
 - Enter a **Name** for the contact, see *Entering text* in the full manual. Delete with **Clear**.
 - Use / to select **Mobile**, **Home** or **Office**, enter the phone number(s) including the area code.
 - Select **Picture** and press **Edit** to associate a picture to the contact. This picture will be displayed when the corresponding contact is calling you and may also be visible in the phonebook. Select **Take picture** and press **OK** for using the camera to take a picture. Select **My pictures** and press **OK** to select an existing picture.
 - Press **Save**.
 - Press to return to standby.
- See *Phonebook picture* in the full manual.

Deleting entries in Phonebook

Menu → **Phonebook** → scroll to desired entry → **Options** → **Delete** → **OK**. Press **Yes** to confirm or **No** to cancel.

4.

Using Phonebook

Making a call from the Phonebook

- Press **Name** to open the phonebook.
- Use / to scroll through the phonebook, or quick search by pressing the key corresponding to the first letter of the entry.
- Press **Call** to dial the highlighted entry, or press **Back**.

Creating ICE entry (In Case of Emergency)

First responders can access additional information such as medical information from the victim's phone in case of emergency. In the event of a trauma, it is critical to have this information as early as possible to increase the chances of survival. All fields are optional, but the more information provided the better.

- Press **Menu**, scroll to and press **OK**.
- Select **+ICE** and press **OK**, then use / to scroll the list of entries.
- Press **Edit** to add or edit information in each entry. Delete with **Clear**. Press **Save** when done.

See *Phonebook/ICE* in the full manual.

Camera

To get sharp photos, wipe the lens clean with a dry cloth.

- Press shortcut or press **Menu**, scroll to and press **OK**.
- Press to take photo.
- Press **Options** or **Back** (if you do not make any selection the picture is saved).

Messages

Creating and sending text messages/SMS

- Press shortcut or press **Menu**, scroll to and press **OK**.
- Select **Create new** and press **OK**.
- Select **SMS** and press **OK**.
- Type your message, then press **To**.
- Select a recipient from **Phonebook** and press **OK**. Alternatively, select **Enter number** and press **OK** to add recipient manually and press **Done**.
- Select **Add** to add more recipients or select **Send** to send and then press **OK**.
- You can also modify the recipients by selecting one and press **Options** to **Edit**, **Delete** or **Delete all**.

Note!

If you choose to add multiple recipients, you will be charged for each recipient (maximum 10).

Reading an incoming message

When you receive a message while your phone is on, the screen will display . Press **Read** to read the message.

Creating and sending picture messages/MMS

A MMS message can contain text and media objects such as pictures, sound recordings and video. Both you and the recipient must have subscriptions that support MMS.

- Press **Menu**, scroll to and press **OK**.
- Select **Create new** and press **OK**.
- Select **MMS** and press **OK**.
- Type your message, then press **Options**.
- Select **Add picture** to add items to your message, or select **Add subject** to enter subject.
- Add recipients with **To** and **Send** when ready.

A voice message use the same technology as a picture message.

See *Messages* in the full manual.

6.

Entering Text

Press a numerical key repeatedly until desired character is shown. Wait a few seconds before entering the next character.

Press for a list of special characters. Select the desired character with / and press **OK** to enter it. Use the side keys **+/-** or / to move the cursor within the text. Press to cycle upper case, lower case and numerals.

Entering text with predictive text

In some languages you can use Smart ABC (eZiType™) input method which uses a dictionary to suggest words. See *Settings/Messages/Predictive text* in the full manual.

Entering phone numbers

For international calls, always use + before the country code for best operation. Press twice for the international prefix +. You can dial or save phone numbers with pauses for use with automated systems, such as voicemail or credit card billing numbers. There are two types of pauses available on your phone, press repeatedly until desired character is shown.

Custom Settings

Silent mode

Use **Silent** to silence your ring tones.

Press and hold to activate/deactivate **Silent**.

Tip:

Press and hold **+ or -** to temporary switch off the ring signal without opening the flip.

Changing Ringtones

You can select different ring tones. Follow this sequence to reach the customization.

Menu → **Settings** → **Sound** → **Tone setup** → **Ringtone**.

Use / to scroll between options. When you pause on a melody, you will hear its sound. Once you have found the ringtone you wish to use, press **OK** to select.

You can use this same process to customize the tones for the **Alarm**, **Message tone**, **Keypad tone**, **Power on** and **Power off** in the same way.

Wallpaper

You can select different display backgrounds.

Menu → **Settings** → **Display** → **Wallpaper**.

7.

Useful Tools

Alarm

Use the Alarm feature to set wake-up call or help you keep track of an important time.

Menu → **Alarm**.

Organizer

Use the Organizer to store tasks to help you keep track of important events.

Menu → **Organizer**.

Note!

These functions will work even when the phone is switched off.

Calculator

The Calculator can perform basic math operations.

Menu → **Calculator**.

Image viewer

View your saved images and detailed information about files, e.g. date, size, copyright.

Menu → **Image viewer**.

5.

SOS/911 Calls

As long as the phone is switched on, it is always possible to place an SOS call by entering the main local emergency number for your present location followed by .

Most networks accept calls to emergency numbers without a valid SIM card. Contact your service provider for more information.

Note!

Sometimes an emergency call cannot be placed due to network, environment or interference issues.

Assistance Button

The Assistance button allows easy access to contact your predefined help numbers (Number list) should you need help.

The Assistance function must be activated before use. See *Assistance* in the full manual.

CAUTION

When an emergency call is activated the phone is pre-set to handsfree mode. Do not hold the device near your ear when the handsfree mode is in use, because the volume may be extremely loud.

5.

8.

