

Hand Held Full Function Remote for Signature Command System

INSTALLATION AND OPERATING INSTRUCTIONS

This remote control provides a safe, reliable and user-friendly remote control for the signature command system. The system can be manually or thermostatically turned on and off with the transmitter. Always check the appliance home owner’s manual for additional information, or warnings regarding accessory installation before using this remote control system.

Carefully inspect the contents for shipping damage. If any parts are missing or damaged, immediately contact the dealer from whom you purchased the kit or Ambient Technologies Technical Support at 1 800 398 6195. Do not attempt to install any part of the kit unless all parts are in good condition. Please keep this booklet for future reference.

CONTENTS OF KIT

Description	Qty
Transmitter	1
Battery Alkaline AAA (for Transmitter)	3
Instructions	1

FEATURES/SPECIFICATIONS

- Thermostatic Control
- Battery Powered
- Low battery Indication
- Three Speed Control for Blower
- Three Level of Light Brightness adjustment
- Three Flame Height Settings
- Auxiliary On/Off
- Programmable Timer to turn blower on and off
- Child Proof Lock-out
- 16 Security Codes
- Reset Button

WARNING
Important Safety Information

- Read this manual thoroughly prior to programming or operating any remote control.
- This remote control system requires three (3) “AAA” alkaline batteries to power the transmitter.
- This remote control system should only be used as described in this manual. Any other use is not recommended and will void the warranty.

NOTE

Due to the sensitive temperature monitoring components in the transmitter, it is necessary to allow the transmitter to stabilize to room temperature before accurate room temperatures are displayed. If the transmitter is activated from a severe cold condition, allow 15 minutes for accurate temperature readings to appear on the LCD display.

WARNING

Turn appliance OFF (at the appliance or remote receiver) if you are away from your house for an extended period of time. Never leave anything on top of the surface of the transmitter. Any modification of components will void the warranty and may cause a fire hazard.

INSTALLATIONS

Installing Batteries

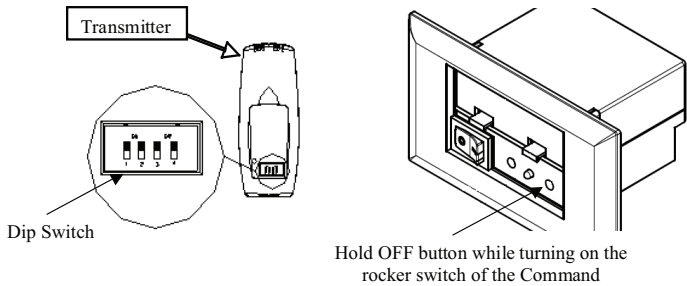
The remote transmitter uses three (3) “AAA” batteries. To install batteries,

1. Press down the battery door tab and pull out to remove the battery door.
2. Install the batteries as indicated on transmitter.
3. Close the battery door by snapping in place.
4. When three batteries are installed, the transmitter will initialize for 10 seconds and then is ready for use.
5. The batteries should be replaced at least once every 6 months or when the low battery icon indicator is displayed.

Setting Privacy (DIP) Switch on Transmitter:

The remote transmitter privacy (DIP) switches are preset at the factory. In the event of activation or interference from other nearby transmissions, reset the code using the following procedures:

1. Slide the code switches on the transmitter to your choice of ON or OFF position. Switches #1, #2, #3 and #4 are preset to “ON” for the transmitter.
2. On the Command Center, hold the OFF button while turning on the rocker switch (see figure).
3. Press ON button on the transmitter to learn. The receiver will give two beeps if the learning is successful; if not, repeat 2.
4. The transmitter is now ready to operate.



WARNING

Do not use two (2) or more remote control systems in the same area with the same dip switch settings, as they will communicate with each other. This may cause the appliances to malfunction.

Reset Button:

The reset button can be used to reset the transmitter if transmitter is not working properly. The reset button is located behind the battery door cover in the lower left corner of battery compartment. Using a paper clip, press the reset button and the transmitter will reset and initialize for 10 seconds before it can be used.

OPERATIONS

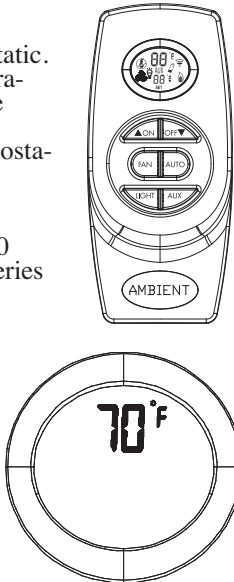
General

The RFSC Remote Control has two (2) operating modes: Manual and Thermostatic. The control system can be set to temperature range between 45°F and 90°F. The blower speed and flame height can be adjusted in either the manual and thermostatic mode.

The transmitter will operate the remote receiver from 1 foot to a maximum of 30 feet. The distance is reduced when batteries are low or when the receiver is inside a metal enclosure.

Initial Start-up

1. After initial power up or when RESET button is pressed, the transmitter is reset. The reset button is located behind the battery door of transmitter.
2. During system reset, all features of

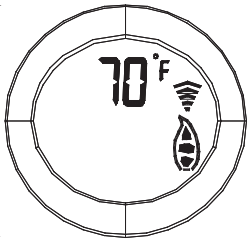


the LCD DISPLAY will be visible. After one second, the LCD will be initialized. A typical reset display is shown above. Note that the temperature scale is degree F.

3. Press On button to select between °C and °F display. It will exit setting mode automatically after 10 seconds if no key is pressed. The transmitter will send an Off signal after reset.
4. After reset, the transmitter is operating in manual mode. The room temperature is shown as above.

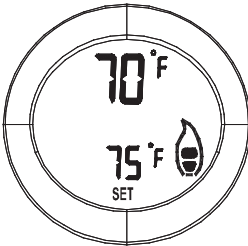
Manual Mode:

1. Press the ON button once to turn on the appliance with max flame height.
2. Press the OFF button to decrease flame height. The first two press will decrease flame height to lower level. The third press will turn off the fireplace.
3. If OFF button is held for more than 3 seconds, the fireplace will be shut off.



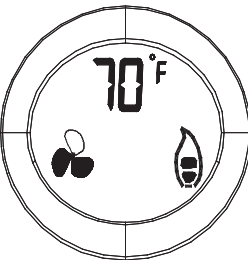
Thermostatic Mode:

1. Press the AUTO button to enter the thermostatic mode.
2. In thermostatic mode, press the ON / ▲ button or OFF / ▼ button to set the desired set temperature.
3. Once the setting is completed, the transmitter will automatically turn on the fireplace when the room temperature is below the set temperature and turn off the appliance when the room temperature is above the set temperature within 1 degree.
4. There will be a slight delay in the response of the unit (on/off) to a temperature. Room temperature is monitored every 3 minutes.
5. Press the AUTO button to exit the thermostatic mode. The transmitter will be in the manual off mode and the fireplace will be shut off.



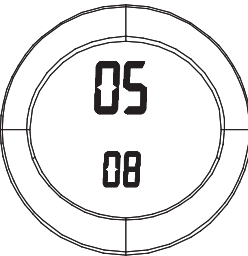
3-Speed Bower Control:

1. Press FAN button once to enter blower speed setup mode at low speed initially and one of the three blade icon will display darken on LCD display.
2. Continue to press FAN button to set up the blower speed you desire.
3. If there is no input within 3 seconds, the new setting will be transmitted to receiver. If the fireplace is on, the blower speed will take effect right away; if the fireplace is off, the receiver will remember this setting and blower is still off.
4. If you continue to press FAN button to the position that all blades are gone, the FAN icon will disappear and turn the blower off.



Blower On Delay Time and Off Delay Time Setting:

1. Hold FAN button for 3 seconds and two numbers will show up in LCD screen. The upper one is On Delay Time and the bottom is Off Delay Time in minutes.
2. Use the ON / ▲ button to set the desired On Delay Time from 0 to 15 min.
3. Use the OFF / ▼ button to set the desired Off Delay Time from 0 to 15 min.
4. If there is no input within 3 seconds, the new setting will be transmitted to receiver.
5. The default settings for both transmitter and receiver are 5 minutes for On Delay Time and 8 minutes for Off Delay Time, as shown in this picture.



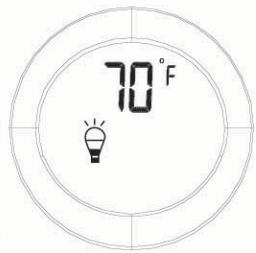
Flame Height Setting for Thermostatic Mode:

- 1. Hold AUTO button for 5 seconds and one number and flame icon will show up in LCD screen, as show in the figure.
- 2. Use the ON / ▲ or OFF / ▼ button to set the desired flame height to 1 (Min), 2 (Medium) and 3 (Max)
- 3. If there is no input within 3 seconds, the new setting will be transmitted to the receiver. This setting only affects auto mode operation.
- 4. The default setting for transmitter is 2 (Medium), as shown in the figure.



3-Level Light Brightness Control:

- 1. Press LIGHT button once to change light brightness to low and one of the three levels will display dark on LCD.
- 2. Continue to press LIGHT button to set up the light brightness you desire.
- 3. If there is no input within 3 seconds, the new setting will be transmitted to receiver.
- 4. If you continue to press LIGHT button, the LIGHT icon will disappear and turn the light off.



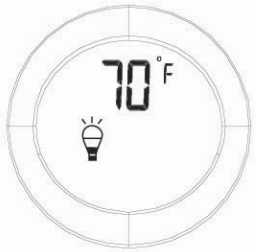
AUX Control

- 1. Press AUX button once to turn on auxiliary. AUX shows on the LCD.
- 2. Press AUX button again to turn off auxiliary. AUX icon disappears.



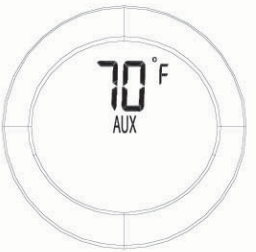
Low Battery Detection:

- 1. Battery voltage is checked once a minute. When the battery voltage drops to a certain level, the low-battery icon will display on LCD, and the transmitter **will turn off the appliance**. The transmitter will not function anymore until fresh batteries are installed.
- 2. When the batteries are low, the LCD displays a low battery indicator. The low battery indicator will be displayed in any mode.
- 3. The transmitter will not operate with low batteries. Change the batteries before the batteries are too weak for normal operation. **TURN THE UNIT OFF BEFORE REPLACING BATTERIES.**



Child-Proof Protection:

- 1. Press and hold the ON and OFF buttons simultaneously for 3 seconds to enter childproof mode as shown in this picture.
- 2. The transmitter will not send a signal again until childproof mode is deactivated by pressing the ON and OFF buttons simultaneously for 3 seconds to exit childproof mode and the Childproof indicator disappears from LCD.



Transmitter Thermal Shutdown:

- 1. If transmitter measures a room temperature exceeding 99 degrees Fahrenheit, the LCD will display "HI" and the transmitter will turn off the appliance.
- 2. Transmitter will not function until the room temperature

has dropped below 99 degree Fahrenheit. If transmitter measures a room temperature less than 40 degrees Fahrenheit, the LCD will display “LO” and **NO SIGNAL will be sent to turn on the appliance.**



TROUBLESHOOTING

Symptom	Causes	Action
1. Battery icon on LCD on transmitter. 2. LCD display is blank 3. LCD display shows “funny” display	1. Low Battery	1. Replace batteries. Change batteries every 6 months. 2. Check battery installation or replace batteries. 3. Press Reset button at the back of the transmitter.
4. The receiver does not respond to the transmitter	1. Learning was not performed after resetting the Privacy (DIP) switch setting on transmitter 2. Transmitter measures temperature exceeding 99 degrees Fahrenheit and shows “HI” on LCD 3. Distance between the transmitter and receiver is more than 30 feet 4. Receiver is installed in an enclosure	1. Perform learning every time after the DIP setting is changed 1. Move transmitter to a cooler place and wait until temperature drops below 99 degree. 1. Make sure the operating distance is less than 30 feet 1. Make sure the receiver is not located inside to tight of an enclosure.

WARNING: Changes or modifications to this unit not expressly approved by the party responsible for compliance could void the user’s authority to operate the equipment.

NOTE: This equipment has been tested and found to comply with the limits for a Class B digital device, pursuant to Part 15 of the FCC Rules. These limits are designed to provide reasonable protection against harmful interference in a residential installation. This equipment generates, uses and can radiate radio frequency energy and, if not installed and used in accordance with instructions, may cause harmful interference to radio communications. However, there is no guarantee that interference will not occur in a particular installation. If this equipment does cause harmful interference to radio or television reception, which can be determined by turning the equipment off and on, the user is encouraged to try to correct the interference by one or more of the following measures:

- Reorient or relocate the receiving antenna
- Increase the separation between the equipment and receiver.
- Connect the equipment into an outlet on a circuit different from that to which the receiver is connected.
- Consult the dealer or an experienced radio/TV technician for help.

FCC Radiation Exposure Statement

This device complies with Part 15 of FCC RF Rules. Operation is subject to the following two conditions:

- 1) this device may not cause interference and
- 2) this device must accept any interference, including interference that may cause undesired operation of the device.

WARRANTY

This warranty gives you specific legal rights and you may also have other rights that vary from state to state or province to province. Answers to any questions regarding our limited warranty may be obtained by writing our corporate offices. Ambient Technologies warrants each new Ambient Technologies remote control against any defects that are due to faulty material or workmanship to the original owner, for a period of five years after the original date of purchase. This warranty and our liability does not apply to batteries, nor does it include damage to merchandise or the remote control resulting from accident, alteration, neglect, misuse, improper installation or any other failure to follow Ambient Technologies installation and operating instructions. After contacting Ambient Technologies Tech Service to receive a return authorization number, we agree to repair or replace at our option any Ambient Technologies remote control under warranty. Provided it is returned postage prepaid to our warranty facility in a padded carton within the warranty period, with proof of the original date of purchase and a brief description of the malfunction. This limited warranty does not include the cost of removal or re-installation.

Ambient Technologies
149 Cleveland Drive
Paris KY 40361

**FOR TECHNICAL SUPPORT
CALL 800-398-6195**

20H3178 Rel 1 Nov 2007