

User manual

User manual

Step1: Install the Wireless HD receiver equipment

- Connect the receiving device to HD displays (LCD, LED, etc.) using the VGA cable;
- Connect 5V DC power adapter to the receiving device, and turn on the power switch.

Step2: Install the wireless HD transmitter equipment

- The transmitting device is connected directly to the HD signal source (laptop computer, PS3 or others) by the VGA interface;
- Connect the USB connector of the transmitter to computer USB Interface, or a USB power adapter.

Step3: Connect the device transmitting the signal source

- The wireless connection will establish automatically, During this time the blue light of wireless HD transmitter will flash, After the wireless connection complete, the blue light keeps bright. The entire process of the connection takes about 15 seconds.

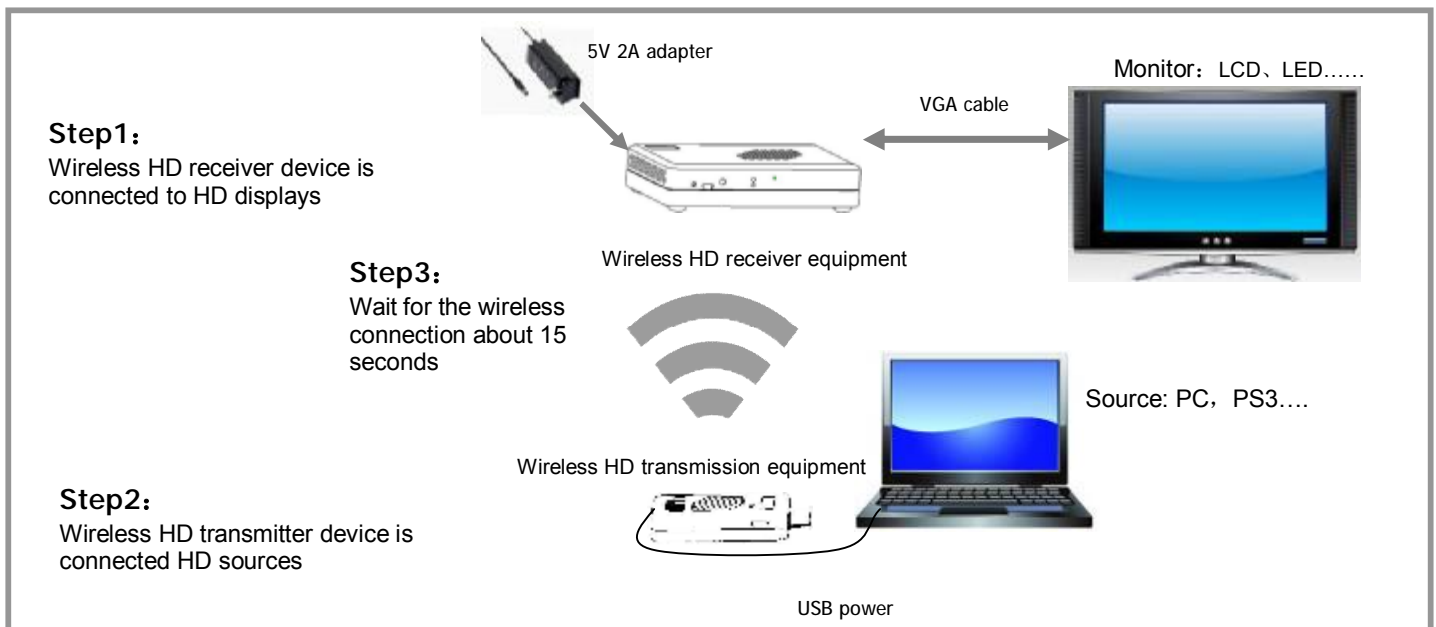


Figure 1 Schematic diagram of the wireless HD video systems to connect

Note: See Troubleshooting (2,3 pages)

- If the PC does not support automatic image output, you need to do it manual.
- Connect the Transmitter to the video player or an external display device, if there is no USB power supply interface, you can use USB power adapter.
- If the wireless connection can't connect successfully, you can try using the remote control POWER button to restart the receiver. The receiver will reboot automatically and try to connect to the transmitter again.

Troubleshooting

User manual

Before reading this chapter, please do the following confirmation:

- 1) Connect the source and displays directly through the VGA cable and watch if it can transfer images, if you still can't watch the transfer images and sound, you need to make sure the signal source or displayer problems.
- 2) To confirm the source of the VGA port is working properly, please check if the notebook graphics driver installation complete.
- 3) Make sure the display device's VGA port is working properly, and refer to operating manual for the settings are correct.

1 Can't establish the wireless connection

- 1) Make sure the range of the transmitter and receiver is no more than 10 meters indoor.
- 2) Make sure between the transmitter and the receiver has no metal objects or wall which can block the signal.
- 3) When the receiver is connected, the displayer in the receiving end will show the operation menu. If the menu does not appear, please make sure the receiver's power adapter is connected, the switch is on; and the receiver connect to the monitor through the VGA cable.
- 4) Make sure the wireless HDTV transmitter is connected correctly, Try to re-plug the USB connector, change a USB interface, or use a USB power adapter; Also try to re-plug the VGA connector.

2 can't see any picture on monitor

- 1) Check the display settings again, to confirm the signal input port on the monitor has been selected to the correct VGA input port

- 2) Verify the wireless has connected

- 3) If the wireless is connected, still no image on the monitor, the issue occurs as in Figure 2; please do the following:
Check the signal source, such as PC's confirmation of signal output.

For Windows 7 operating system can use the WIN key + P-> select Copy, as shown in Figure 3

For Windows XP operating system can output images right function menu, see Figure 4

For example, you can use ASUS laptop series can output FN + F8.

- 4) Check the list of devices, make sure the chosen equipment is the right one.
 - 5) Change the resolution on source side
-

User manual

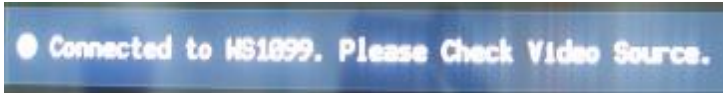


Figure 2



Figure 3

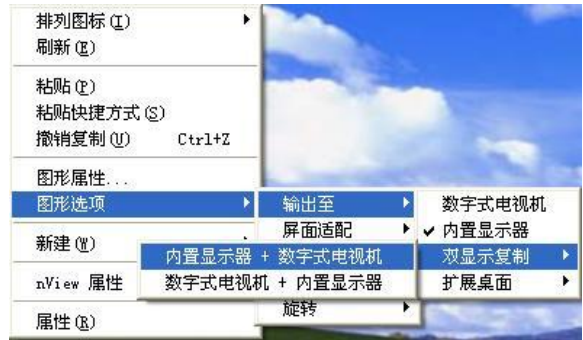


Figure 4

3 Some noise in picture on monitor

- 1) Try to reduce the distance between the wireless transmitter and the receiver.
- 2) Try to change display resolution
- 3) Reset the connection of the transmitter and receiver.

4 No sound on the receiver side.

- 1) Confirm the source of the graphics driver is installed correctly.
- 2) Make sure the external display device is not set to mute mode.

This device complies with part 15 of the FCC Rules. Operation is subject to the following two conditions:

- (1) This device may not cause harmful interference, and
- (2) This device must accept any interference received, including interference that may cause undesired operation.

Changes or modifications not expressly approved by the party responsible for compliance could void the user's authority to operate the equipment.

This equipment complies with FCC radiation exposure limits for uncontrolled environment.

This equipment should be installed and operated with minimum distance 20 cm between the radiator & your body.

This transmitter must not be co-located or operating in conjunction with any other antenna or transmitter.