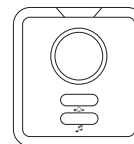


WIRELESS DIGITAL NETWORK DOOR-PHONE SYSTEM

Installation and Operation Manual



(P2019TC3)



(R118-1)

Describe

The products is HD, Wi-Fi network doorbell, has the function of PIR, the bell, TF card storage function, cloud storage function; 433MHz transmitter module, with Ding Dong doorbell, AC/DC 8V-24V power supply, built-in lithium polymer battery, 3.7V/5000mAh, rechargeable, with infrared night light, two-way intercom, with Visitdoor APP and mobile phone use.

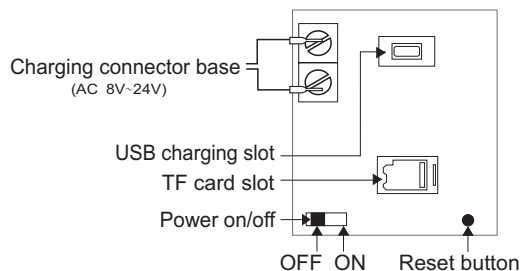
Features

1. battery powered or external power supply, two choose one;
2. Android power and data cable can be charged
3. Wi-Fi network connection
- 4., with PIR function;
5. with Ding Dong doorbell;
6. Automatically takes photo when someone ring
7. cloud storage function;

Packing List

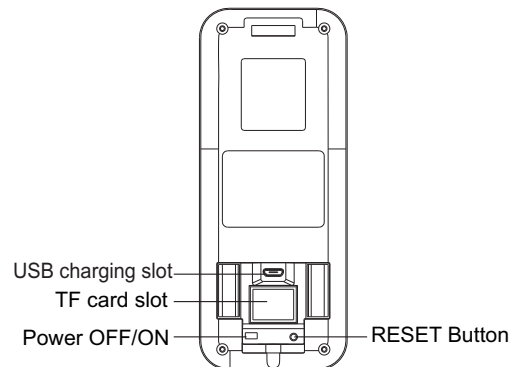
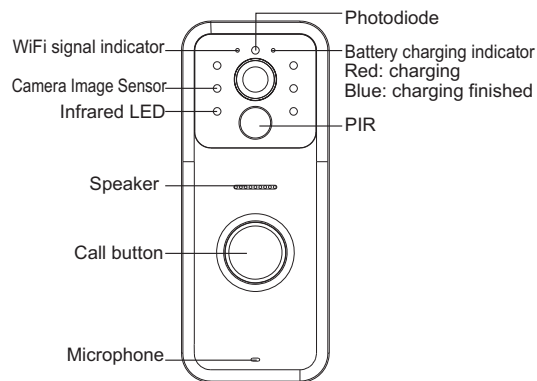


Wiring Diagram



1

Product Views



RESET Button :

power on, press the call button, Keep on press the button about 5 seconds , then the device will be reset back to the factory default parameter.

2

Software Installation.

1. Open the App Store (iOS) or Google Play (Android) on your mobile device. Then search for and install the "visitdoor" APP
2. Or two dimensional bar code scanning

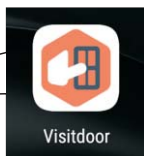


Android



Iphone

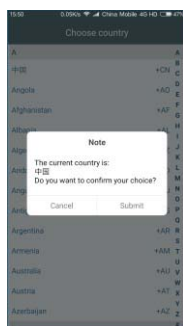
After the installation of mobile phone will appear in the " " Icon, then click the icon



After the installation is complete, it will prompt the APP to run required some of the permissions, please allow, otherwise it may lead to APP can not be used properly.



1. Select the country where you are .

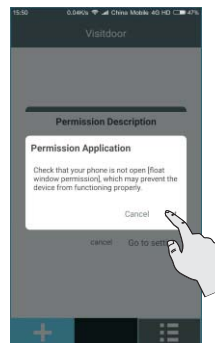


2. click Submit,

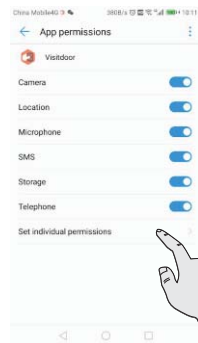
3



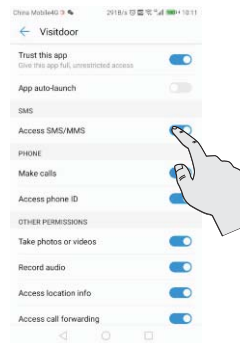
3. Click the YES



4. Click the Set



5. Click the Set individual permissions

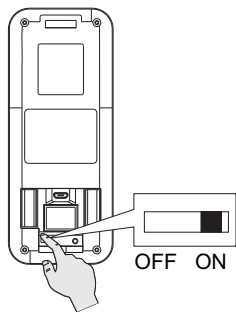


6. Allow all permissions

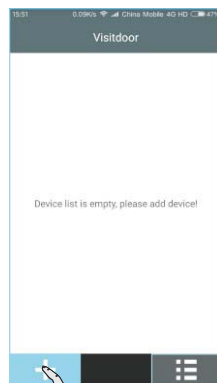
NOTE: Different phones, tips may not be the same, please consult the phone supplier or contact us

4

Android device connected to the network



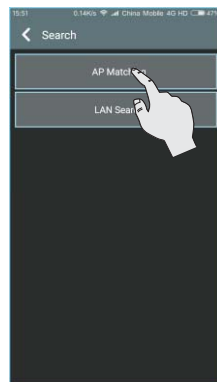
1. Powered on



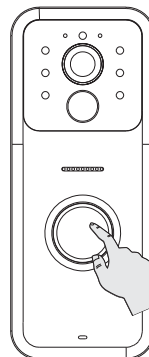
2. Click the "visitdoor" APP, click the "+" icon



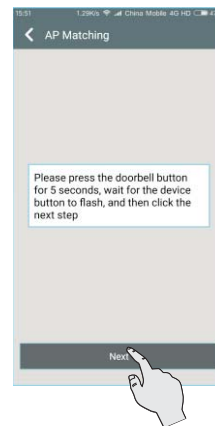
3. Click the Search



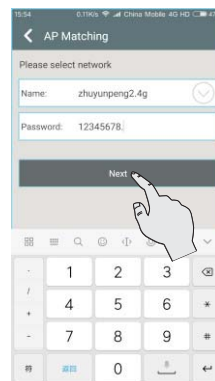
4. Click AP Matching.



5. Keep on press the call button about 5 seconds , the LED turn to fast flashes.



6. Click the Next



7. Enter WiFi password and click Next (only to 2.4G WiFi)



8. connecting Device



9. Enter The default password: **admin**



10. click done.

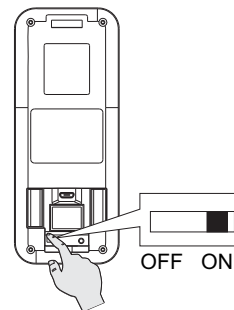


11.add is successful

NOTICE : in order to ensure the security and privacy of users, the user must change password the first time .(see page 12)

7

Apple device connected to the network



1. Powered on



2.Click the "visitdoor" APP, click on the "+" icon

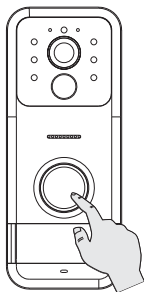


3. Click the Search

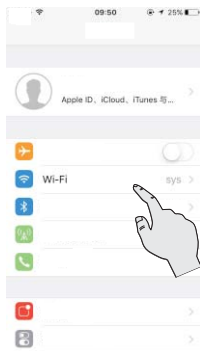


4.Click AP Matching.

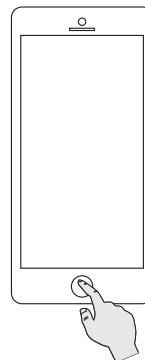
8



5. Keep on press the call button about 5 seconds , the LED turn to fast flashes.



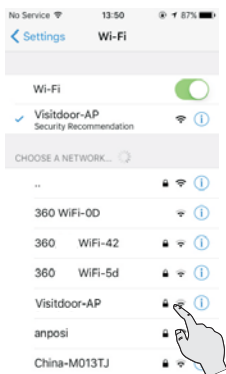
6. enter the phone settings ,Click the WiFi settings,



9. Click the "HOME" button to return your mobile desktop.



10. click "visitdoor" APP,



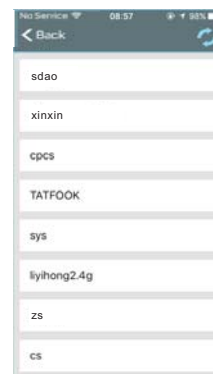
7. select "Vistdoor-AP" and connect,



8. Until the connection is successful.



11. Click the Next



12. Select the WiFi that you want to link to(only to 2.4G WiFi)



13. Enter WIFI password and click OK



14. connecting Device



15. Enter The default password: **admin**

NOTICE : in order to ensure the security and privacy of users, the user must change password the first time .(see page 12)

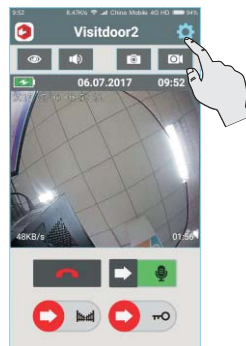


16.add is successful

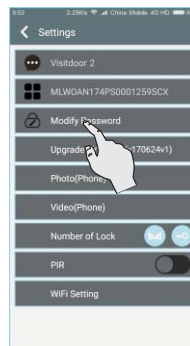
APP Setting

Change the old password: **admin**

NOTICE : in order to ensure the security and privacy of users, the user must change password the first time please.



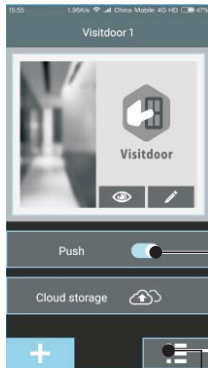
1. Under the monitor or intercom state, click the set icon.



2. click the Modify Password

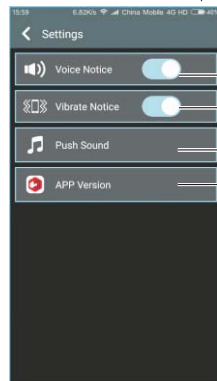


3. Enter the initial password : admin
Then set your new password



Enable/disable
Push notification

click edit icon enter
the set interface



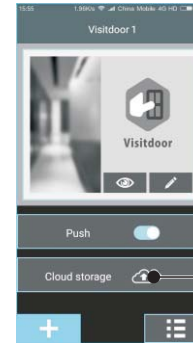
Enable/disable Voice Notice
Enable/disable Vibrate Notice
(Apple phone does not have this option)
Select Push Sound
View APP version

Push notification:

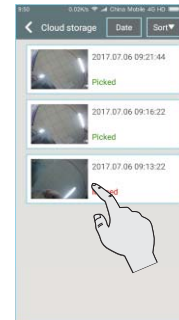
When enabled, the app will send "real time" alerts to your mobile device when ever motion is detected by any of your outdoor. To enable real time alerts make sure the option is enabled and tap on apply to save the changes.

13

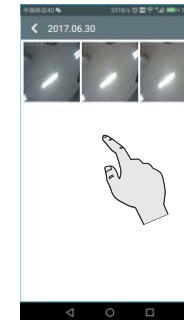
Cloud storage (save for one week)



Click the cloud storage icon
to enter the storage folder.



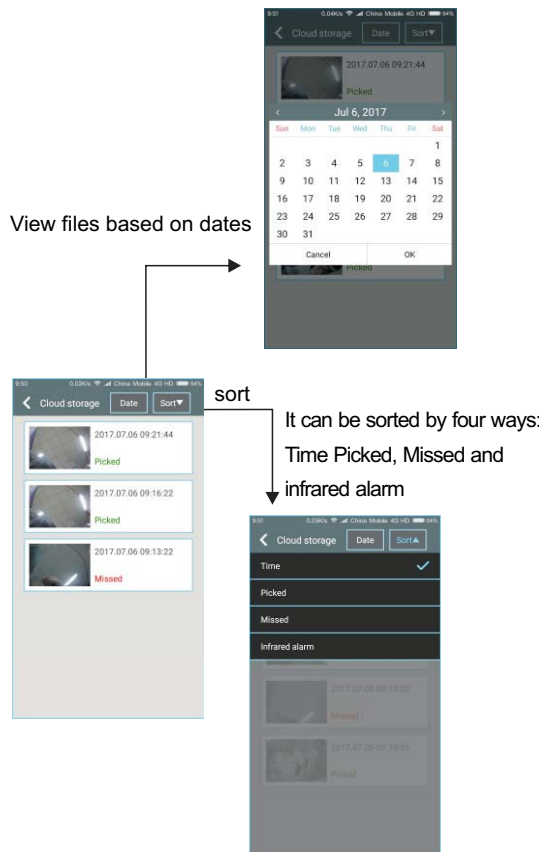
select a folder and click it



There are three photo in
the folder, click to switch
to full screen view.

14

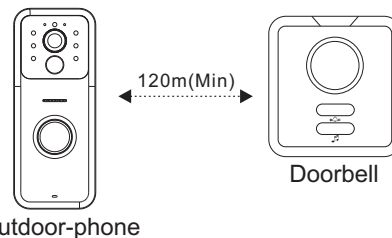
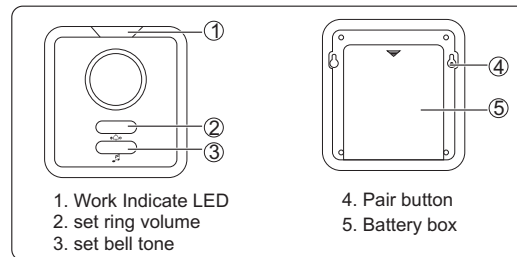
Quick View



15

How to pair doorbell

When the phone is turned off or not used, offers a wireless doorbell to make sure you will not miss the visitor's .





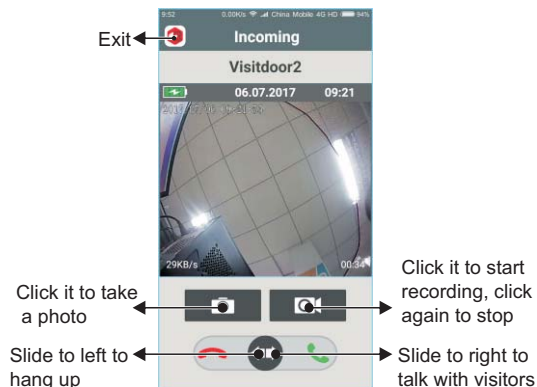
- Pair :**
1. Under the standby statue press the pair button.
 2. Press the call button.
 3. The LED flicker prompt code success and exit
 4. You can learn 4.
(more than 4 automatic covering the first)
- Set melody:**
Press the button to set melody
- Set ring Volume:**
Press the button to set ring volume

16

Operating


1. Call:

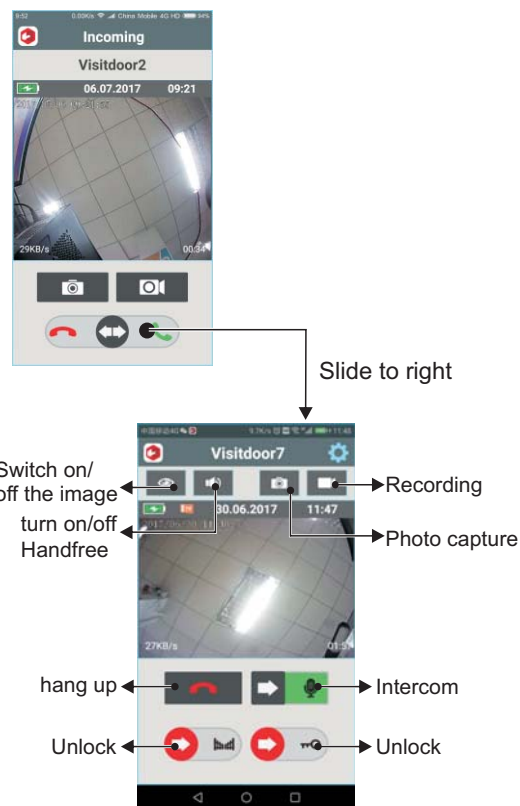
When a visitor presses the call button of outdoor-panel, the LED will be flash with calling reminder sound . mobile devices will be ring activate the screen.(Iphone need to click the push information, to enter the call interface), It will take three photoes, The photo stored in the TF card and cloud storage. If you need video, click the  icon to start recording, click again to stop, and save the video to your phone. Click the  icon, take a photo, and save the photo to your phone, No operation, automatically return to the mobile phone desktop in 45 seconds.






Slide arrow to the right , enter the intercom interface, slide arrow to the left , hang up and back to the mobile phone desktop.

2. Intercom:

when someone ring ,Slide to the  icon to taking with visitors.



Intercom:

Click the  icon to turn on the hands-free function (the function in the factory is set as the default), slide the icon  to right and hold, it can talk to visitor, Release it to hear. click the  icon again to turn off the hands-free, switch to the receiver mode, then can realize duplex intercom, The intercom time is 120 seconds.

Recording:

Click it to start recording, click it again to stop. The file stored in the phone.

Photo:

Click it to take a photo. The file stored in the phone.

To switch on/off the image:

To switch on/off the image,

NOTE: To switch on/off video can improve audio quality

Unlock: (needs to customized)

After identifying the visitor, slide the icon to open the door for the visitor.

Hang-up:

Click it to hang up.

TF card:

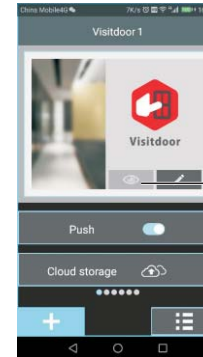
1.Green: TF card has been inserted

2.Red: TF card has full

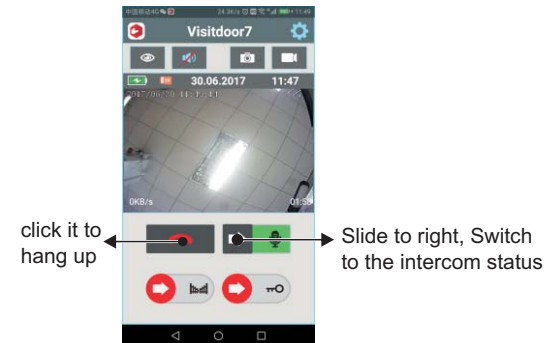
3.No icon: no TF Card

3. Monitor: the "monitor" function is not available when power supply by battery

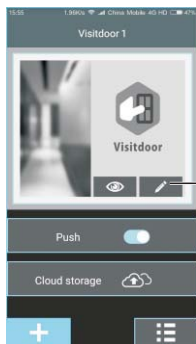
When the monitor icon is gray, the device is not online or power supply by battery, it cannot be monitored. The icon is blue, Indicates that the device is online and can be monitored.



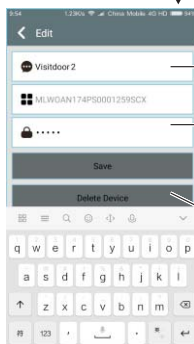
Click the monitor icon



4. Delete or Modify visitdoor



click edit icon



Modify the name

Modify the password
(Only used to change the wrong
password when adding the device)

Delete the Device

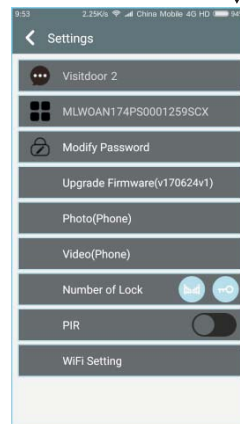
21

5. Device Setting

Under the monitor or intercom state , click the set icon.



Click the set icon



- 5.1 Change Password
- 5.2 Upgrade Firmware
- 5.3 View Records
- 5.4 View Photo
- 5.5 View Video
- 5.6 TF Card rewrite Setting
- 5.7 Luck Setting
- 5.8 PIR setting
- 5.9 Wi-Fi

22

5.1 Change password:

The Change Password option allows you to change the door default password (old password: admin)



old password: admin

NOTICE : in order to ensure the security and privacy of users, the user must change password the first time please.

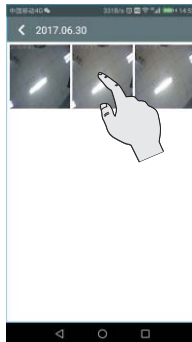
5.2 Upgrade Firmware:

users can upgrade the latest version.

5.3 View record:(need insert TF card, Otherwise, there is no option)



select a folder and click it

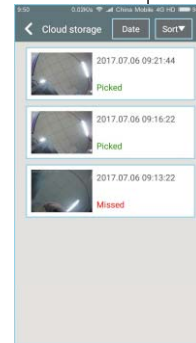
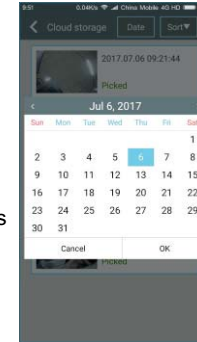


There are three photo in the folder, click to switch to full screen view.

23

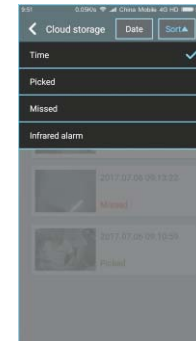
Quick View:(need insert TF card, Otherwise, there is no option)

View files based on dates



sort

It can be sorted by four ways:
Time ,Picked, Missed and
infrared alarm



24

5.4 View photo(phone):

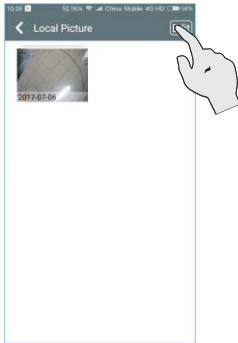


select a folder and click it
the folder based on date.

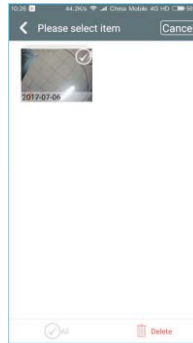



select a file and click it.

Delete photo(phone):

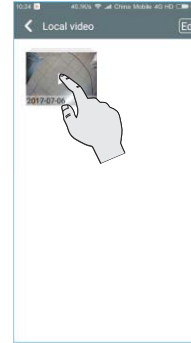


click edit icon ,enter
the delete video menu

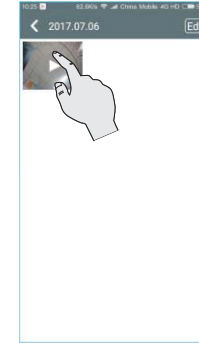


select file which you need
to delete, then click 

5.5 View Video(phone):

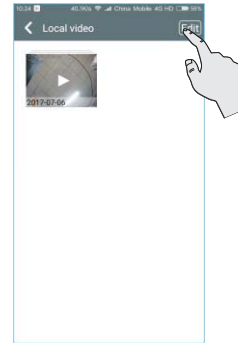


select a folder and click it
the folder based on date.

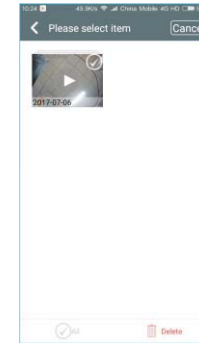



select a file and click it.

Delete video(phone):



click edit icon ,enter
the delete video menu



select file which you need
to delete, then click 

5.6 TF card rewrite setting:

(need to insert TF card, Otherwise, there is no option)

Enable /disable rewrite when the TF card full.

5.7 Luck setting:(needs to customized)

To setting number of luck.

5.8 PIR:

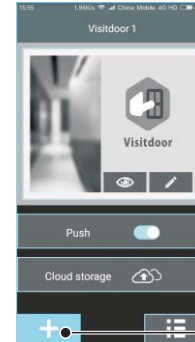
When enabled, the app will send "real time" alerts to your mobile device when ever motion is detected by any of your outdoor. And take three photo stored in TF card and cloud storage.

5.9 WiFi setting:

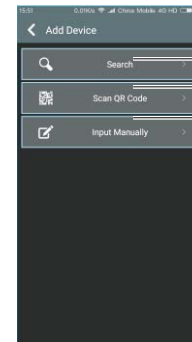
Used to change or connect the WiFi network. To connect or change the network, simply tap on the WIFI option, select the WiFi network you want to connect to. Then enter the password associated to the selected network and tap join to connect to the network.

Add new Visitdoor device

When the device has been connected to the Internet, if there are new users need to add, you can use the following three methods: Search, QR scanning, manual input. The default password: **admin**



click the + icon will pop up the menu



1. Search
2. QR code scanning
3. Manual input

Important:

Make sure your smart phone or tablet is connected to the same Wi-Fi network as the one you want to put the new camera on
Make sure you have the app installed on your Smart phone or tablet.

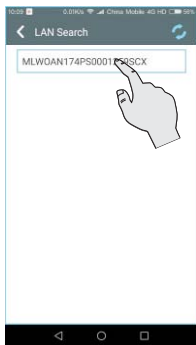
1. LAN Search



1. Select search and click it



2. Select LAN Search and click it



3. Click the device



4. Enter initial password:
admin.

2. QR code scanning



1. Select QR Scan



2. Scan the QR code
The label on the unit

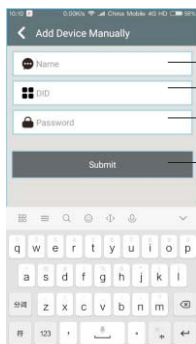


3. Enter device password
The default password: **admin**

3. Manual input



Select manual input



→ Input the system name of you want

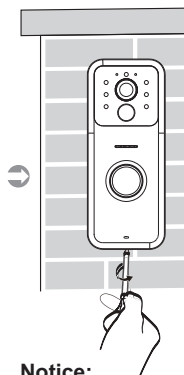
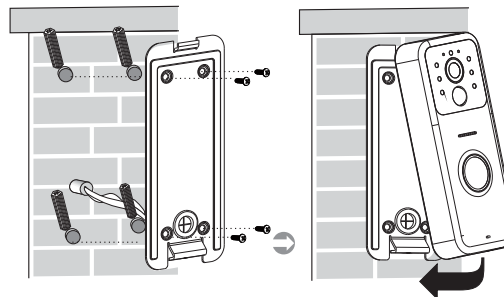
→ Input the DID

→ The default password: **admin**

→ Press to Submit

31

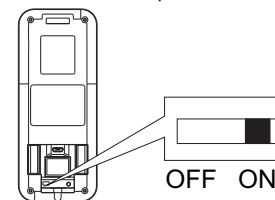
Installation



When mounting the outdoor panel, ensure that it is located in dry place. It is important that the camera or the electronics do not get wet. The camera should ideally be mounted at a height of between 1.45-1.50 meters.

Notice:

Before installation, check that the power switch is on.



32

Specifications

Outdoor-phone

433 Operating Frequency	433.92MHz
433 Unobstructed Effective Range	120m(Min.)
WIFI Operating Frequency	2.4GHz
Operating Temperature	-10℃~ +50℃/ +14°F~+122°F
Storage Temperature	20℃~ +60℃/+14°F~+140°F
Operating Humidity	≤85%RH
Imaging Sensor Type	CMOS
View Angle	level: about 100° vertical:about 70°
Supply Voltage	AC 8V~24V 3.7V/5000MAH(battery)
Consumption Current	500±100mA
PIR	1m
PIR Angle	about 100°
Waterproof grade	IP 44

Doorbel

Receiver Frequency	433MHz
Supply Voltage	AA battery(1.5V×3pcs)
Unobstructed Effective Range	120m(Min.)
Operation Temperature	-10℃~+50℃



Notice:

1. We will maximize to provide more accurate information. There are only small differences between the pictures of description and the actual product relating to the specification, appearance and color, to offer subject to the actual product.
2. If need be, our products and related data are constantly updated and new elements added. This amendment can be changed without notice.

FCC STATMENT

This device complies with Part 15 of the FCC Rules. Operation is subject to the following two conditions: (1) This device may not cause harmful interference, and (2) This device must accept any interference received, including interference that may cause undesired operation.

Warning: Changes or modifications to this unit not expressly approved by the party responsible for compliance could void the user's authority to operate the equipment.

Note: This equipment has been tested and found to comply with the limits for a Class B digital device, pursuant to Part 15 of the FCC Rules. These limits are designed to provide reasonable protection against harmful interference in a residential installation.

This equipment generates, uses and can radiate radio frequency energy and, if not installed and used in accordance with the instructions, may cause harmful interference to radio communications. However, there is no guarantee that interference will not occur in a particular installation. If this equipment does cause harmful interference to radio or television reception, which can be determined by turning the equipment off and on, the user is encouraged to try to correct the interference by one or more of the following measures:

- Reorient or relocate the receiving antenna.
- Increase the separation between the equipment and receiver.
- Connect the equipment into an outlet on a circuit different from that to which the receiver is connected.
- Consult the dealer or an experienced radio / TV technician for help.

FCC Radiation Exposure Statement:

This equipment complies with FCC radiation exposure limits set forth for an uncontrolled environment.

This transmitter must not be co-located or operating in conjunction with any other antenna or transmitter.

This equipment should be installed and operated with minimum distance 20cm between the radiator & your body.