

Wireless video Doorbell

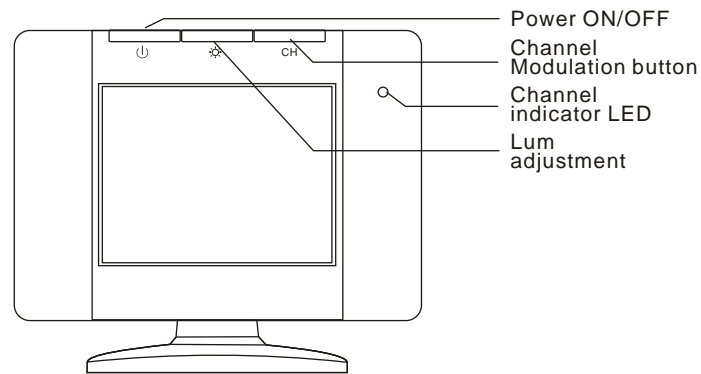
(Indoor-monitor)

Notice proceeding

 Please use our products before, take care to use the manual, according to our provide the information and way that you will install & use our products.

*Our products have defend to plunge function , but the products will be plunged big range that will be mangled permanence still.
 *The batteries(battery pack or batteries installed) shall not be exposed to excessive heat such as sunshine, fire or the like.
 *Attention should be drawn to the environmental aspects of battery disposal. Don't throw used batteries in dustbin.
 Please contact your retailer in order to protect the environment.
 *Danger of explosion if battery is incorrectly replaced. Replace only with the same or equivalent type.
 *Our product are high-tech production, please take care to defend rain , damp proof, thunder.
 *Don't disconnect by yourself.

Keys introduction



Power ON/OFF

Turn on/Turn off

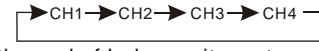
Lum adjustment

Adjustment of picture from brighter to dark or dark to brighter.



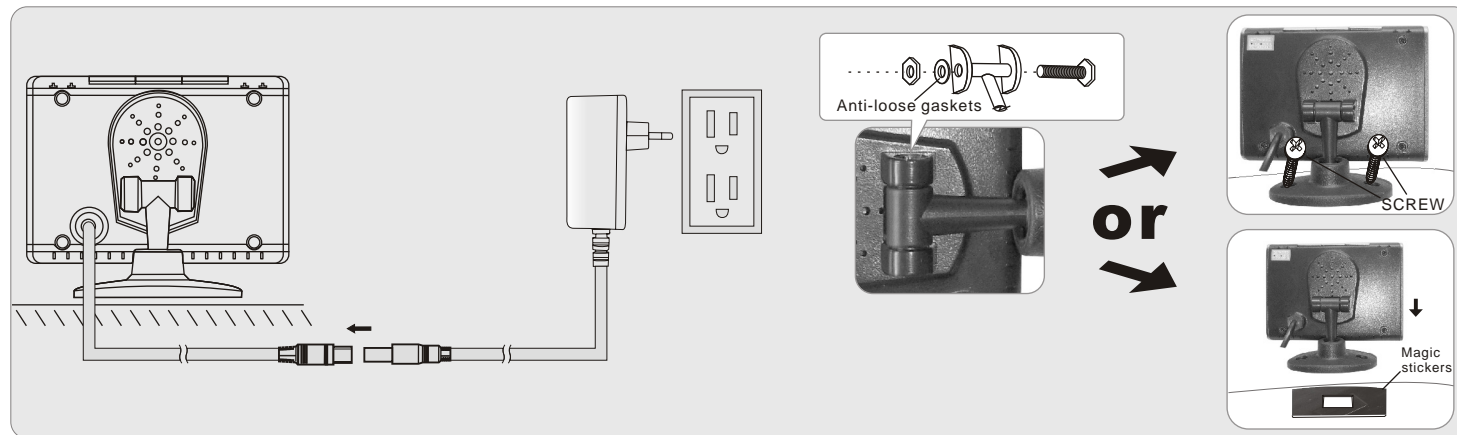
Frequency Modulation button

Adjustment of frequency from Ch1 to Ch4.



(Channel of Indoor unit must complete same as one of Outdoor unit)

Installation

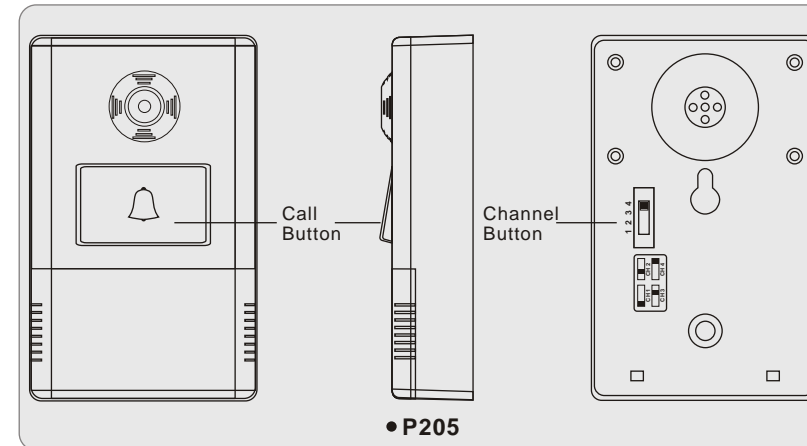


Specifications

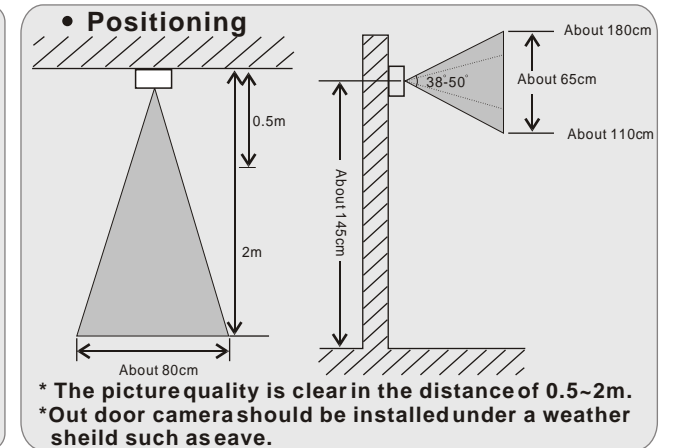
Model	M724D
Supply Voltage	DC12V , 350mA Ripple: <80mVp-p
Consumption Current	220mA ±80mA
Operation Temperature	-10℃~+50℃
Operation Humidity	85%(Max)
Number of dots(Hxv)	480(H)*240(V)dot
Active area	72.0(H)*50.544(V)mm
Screen size	2.36inch(Diagonal)
Dot pitch	0.150(H)*0.216(V)mm
Color Arrangement	RGB.delta
Receiving frequency	ISM2,400MHz~2,483MHz
Receiving sensitivity	<= -85dBm
Video System	PAL/NTSC
External Dimension	102(L)×71(W)×25(H)mm

(Outdoor-bell)

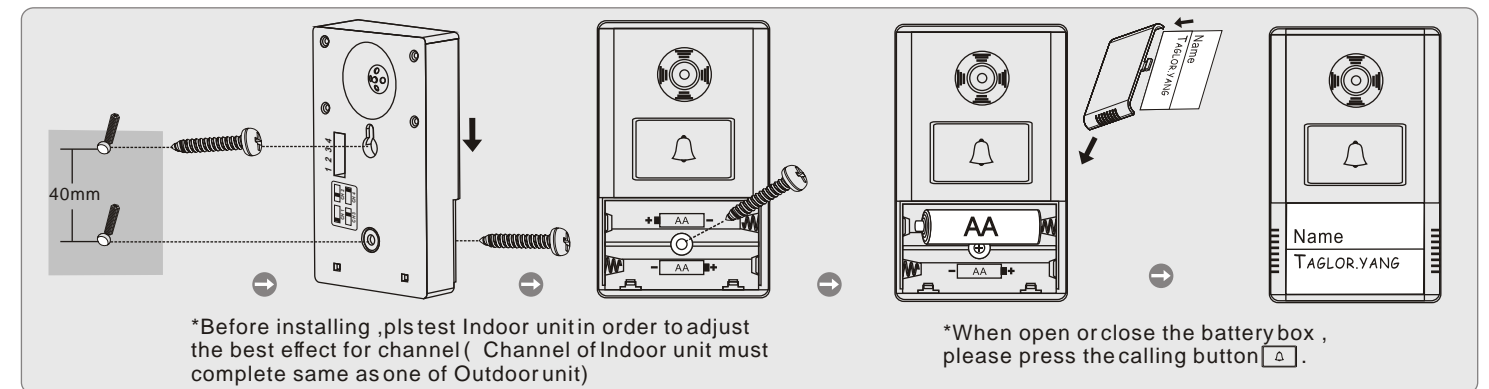
Keys introduction



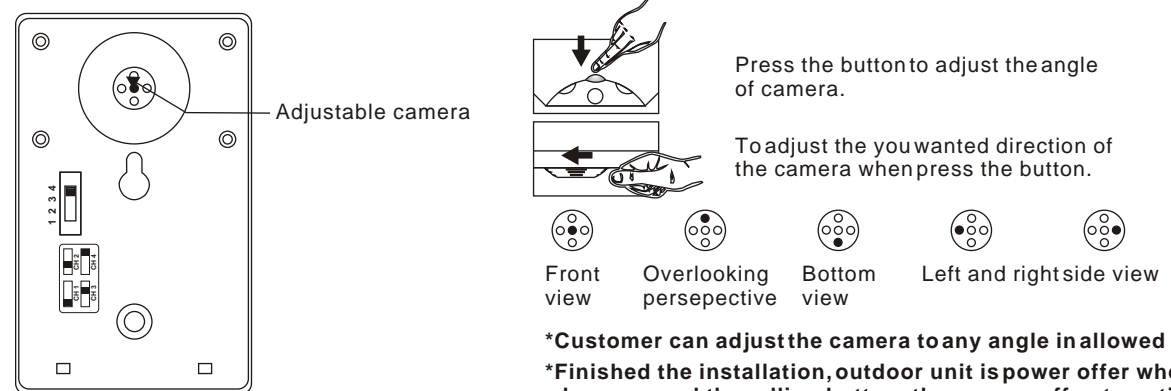
Installation



Installation



Operation



Specifications

Out door camera

Model	P205
Power Consumption	Working:<350mA
Imagery Angle	Diagonal:about 50 °
Operating Frequency	2414MHz; 2432MHz; 2450MHz; 2468MHz
Operation Temperature	-10 ° C ~+40 ° C
External Dimension	94(L)×58 (W)×21(H)mm

Adapter

	Manufacturers	GOSPELL DIGITAL TECHNOLOGY CO.LTD
	Model	GP006CE
	Input	100-240V ~ 50/60Hz 0.5A
	Output	12V $\overline{\text{---}}$ 350mA 4.2VA



SHENZHEN ANTAI ELECTRONIC FACTORY

ADD:3-4/F,Block B,Zhuangbian park ,hezhou, xixiang,Baoan, shenzhen, China.

TEL:+86-0755-27319555 FAX:+86-0755-27478190

Warning:

This device complies with part 15 of the FCC Rules. Operation is subject to the following two conditions:

- (1) This device may not cause harmful interference, and
- (2) This device must accept any interference received, including interference that may cause undesired operation.

Changes or modifications to this unit not expressly approved by the party responsible for compliance will void the user's authority to operate the equipment. Any change to the equipment will void FCC grant.

This equipment has been tested and found to comply with the limits for a Class B digital device, pursuant to part 15 of the FCC Rules. These limits are designed to provide reasonable protection against harmful interference in a residential installation. This equipment generates, uses and can radiate radio frequency energy and, if not installed and used in accordance with the instructions, may cause harmful interference to radio communications. However, there is no guarantee that interference will not occur in a particular installation.

If this equipment does cause harmful interference to radio or television reception, which can be determined by turning the equipment off and on, the user is encouraged to try to correct the interference by one or more of the following measures:

- Reorient or relocate the receiving antenna.
- Increase the separation between the equipment and receiver.
- Connect the equipment into an outlet on a circuit different from that to which the receiver is connected.
- Consult the dealer or an experienced radio/TV technician for help.

The equipment complies with FCC radiation exposure limit set forth for uncontrolled Environment.