

SPECIFICATION

| Transmitting Module | |
|------------------------|---------------------|
| Operating voltage: | 9 - 16 VDC |
| Power consumption: | ≤0.2 watts |
| Video system: | NTSC / PAL |
| Audio input: | Stereo |
| Transmit power: | 10mW |
| Transmitting distance: | 60 meters |
| Dimension: | 55 x 35 x 20mm |
| Receiving Module | |
| Operating voltage: | 9 - 16 VDC |
| Power consumption: | ≤0.2 watts |
| Video output: | 0.8 - 1.2Vp-p/75ohm |
| Audio output: | ≤2.2Vp-p/2Kohm |
| Receiving sensitivity: | -87dBm |
| Signal-to-noise ratio: | 42dB |
| Dimension: | 65 x 40 x 25mm |

ELECTRICAL PERFORMANCE

| | |
|------------------------|--------------------------|
| Power supply: | 9-16V DC |
| Power consumption: | ≤0.2 watts |
| Frequency: | 2468MHz |
| Transmitting distance: | 60 meters |
| Operating temperature: | -10 to 70 degree Celsius |
| Storage temperature: | -30 to 80 degree Celsius |

FCC Statement
This equipment has been tested and found to comply with the limits for a Class B digital device, pursuant to part 15 of the FCC rules. These limits are designed to provide reasonable protection against harmful interference in a residential installation. This equipment generates, uses and can radiate radio frequency energy and, if not installed and used in accordance with the instructions, may cause harmful interference to radio communications. However, there is no guarantee that interference will not occur in a particular installation. If this equipment does cause harmful interference to radio or television reception, which can be determined by turning the equipment off and on, the user is encouraged to try to correct the interference by one or more of the

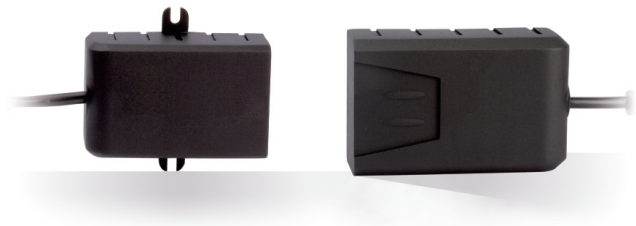
following measures:
-Reorient or relocate the receiving antenna.
-Increase the separation between the equipment and receiver.
-Connect the equipment into an outlet on a circuit different from that to which the receiver is connected.
-Consult the dealer or an experienced radio/TV technician for help.

FCC Radiation Exposure Statement
This device complies with Part 15 of FCC RF Rules. Operation is subject to the following two conditions:
1) this device may not cause interference and
2) this device must accept any interference, including interference that may cause undesired operation of the device.

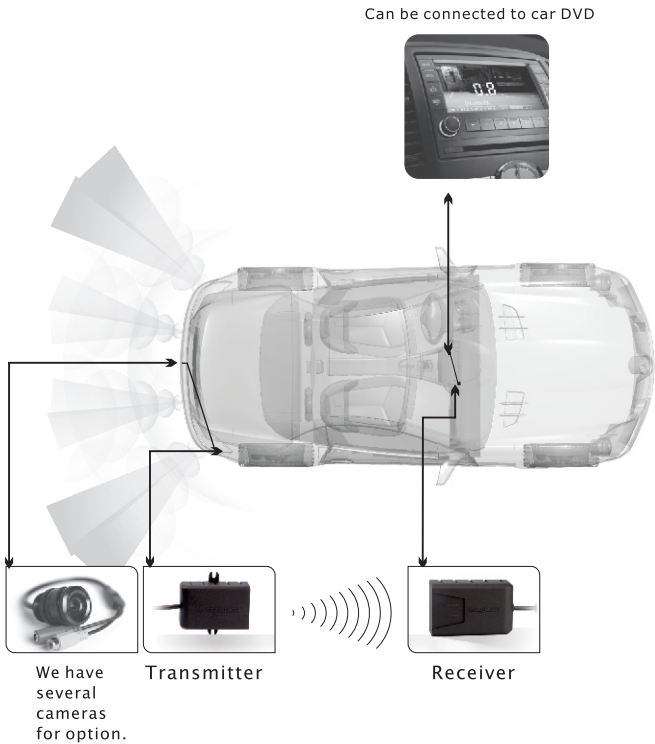
RT001

2.4GHz Wireless Transmitting and Receiving Module

USER'S MANUAL



RT001 INSTALLATION DIAGRAM



RT001 WIRING DIAGRAM

