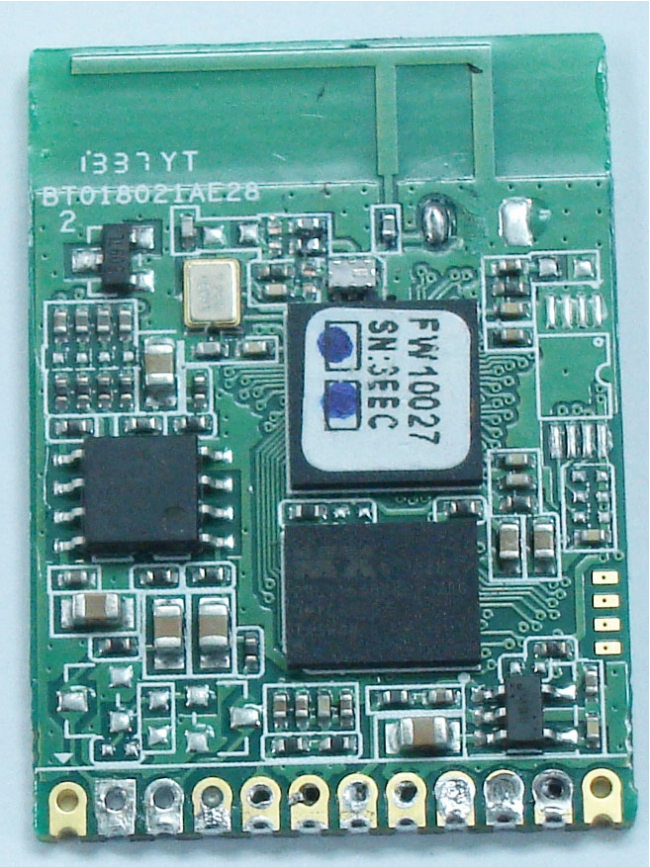
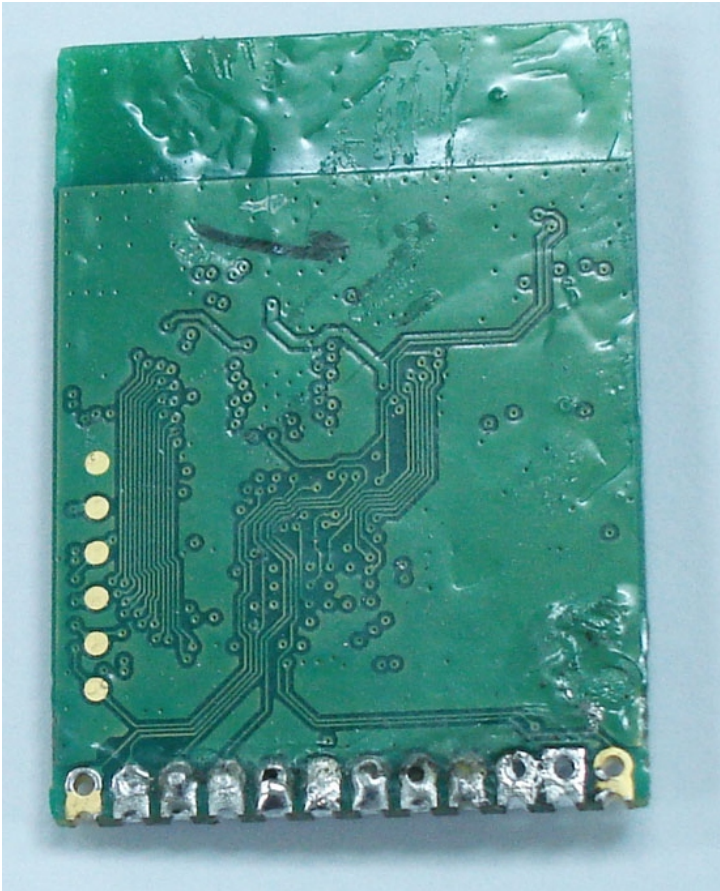


BT Module

Top Side



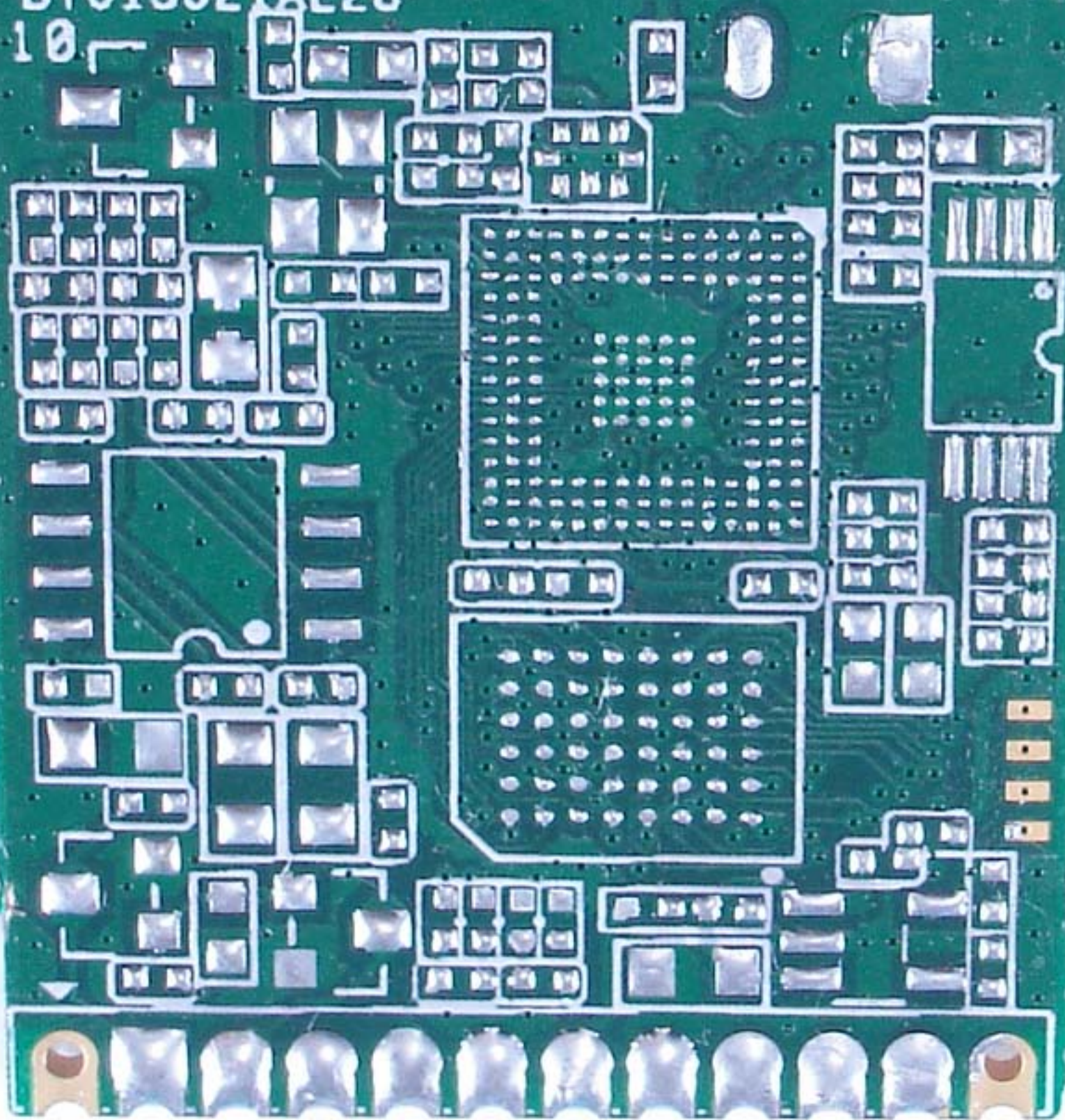
Bottom Side



2011.GS

BT018021AE28

10

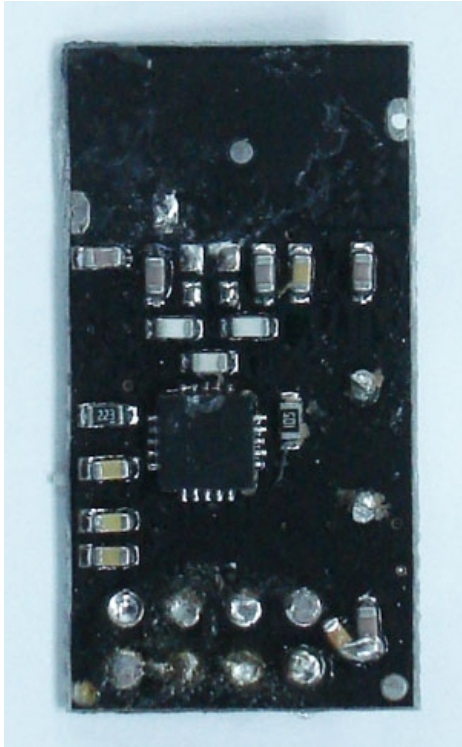


RF Module

Top Side

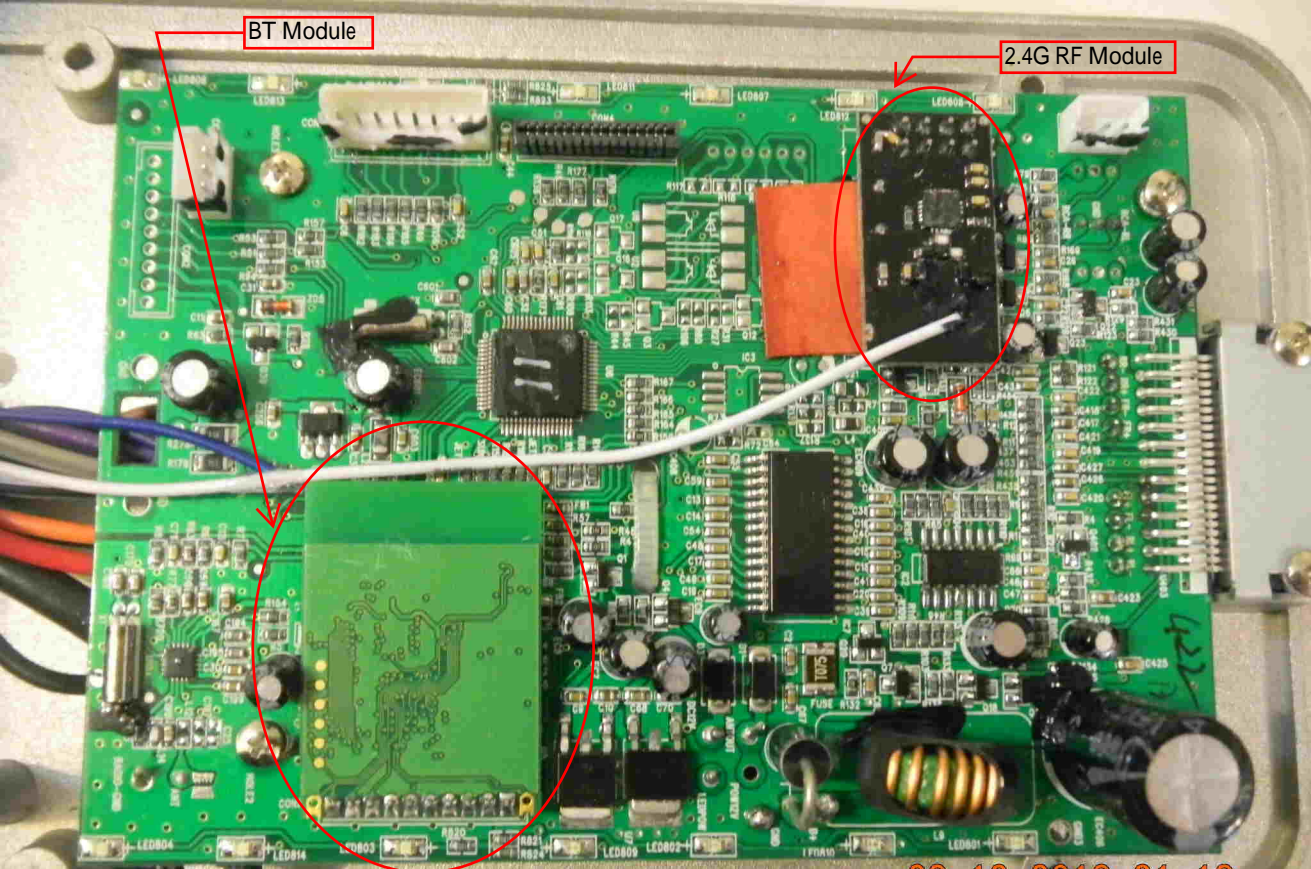


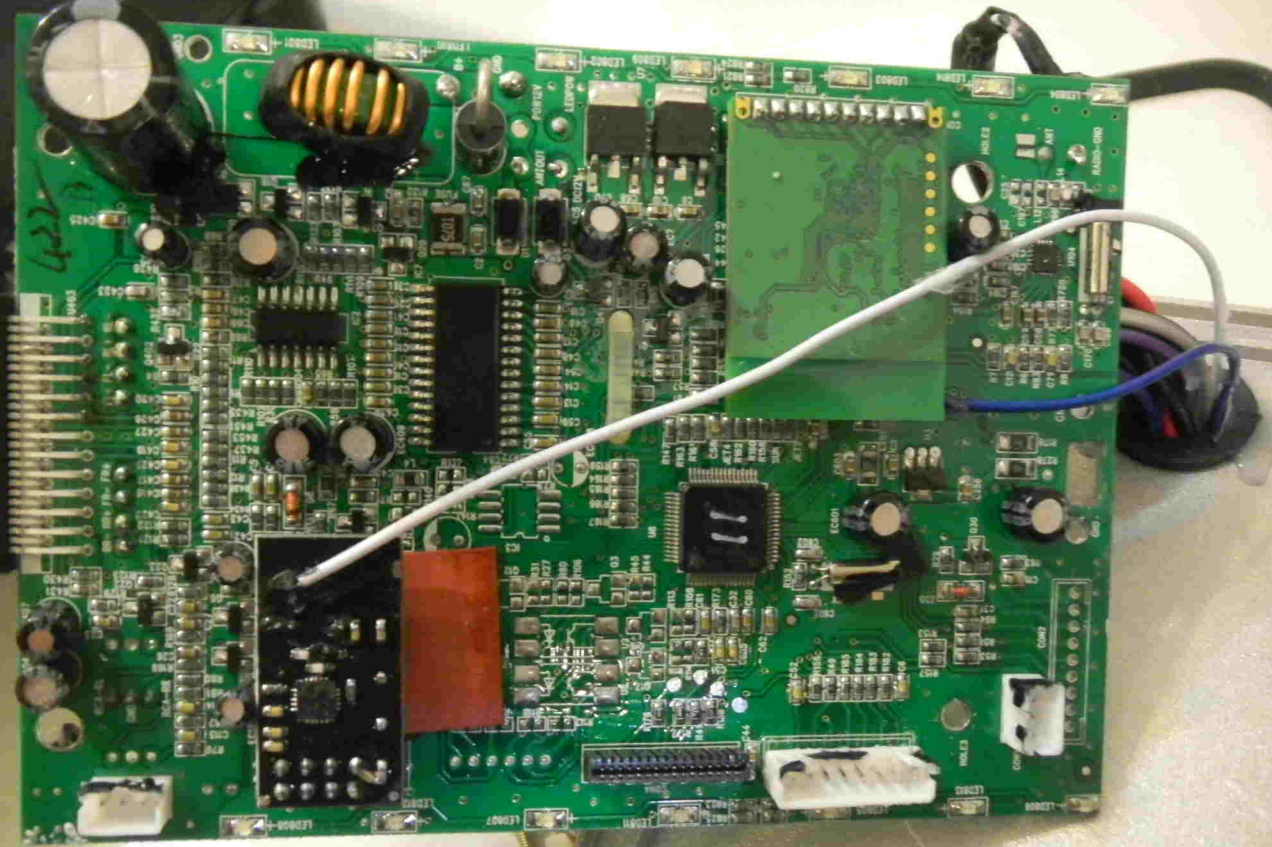
Bottom Side

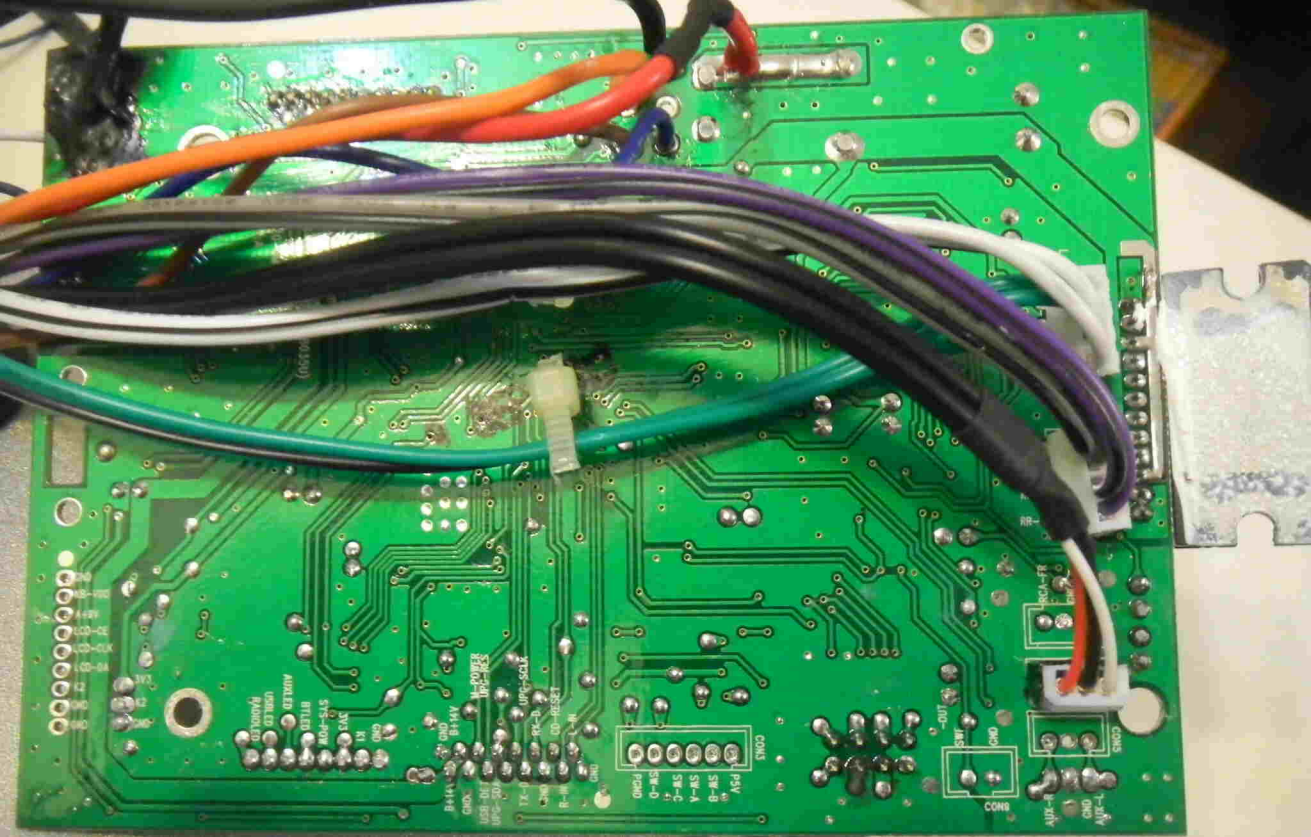


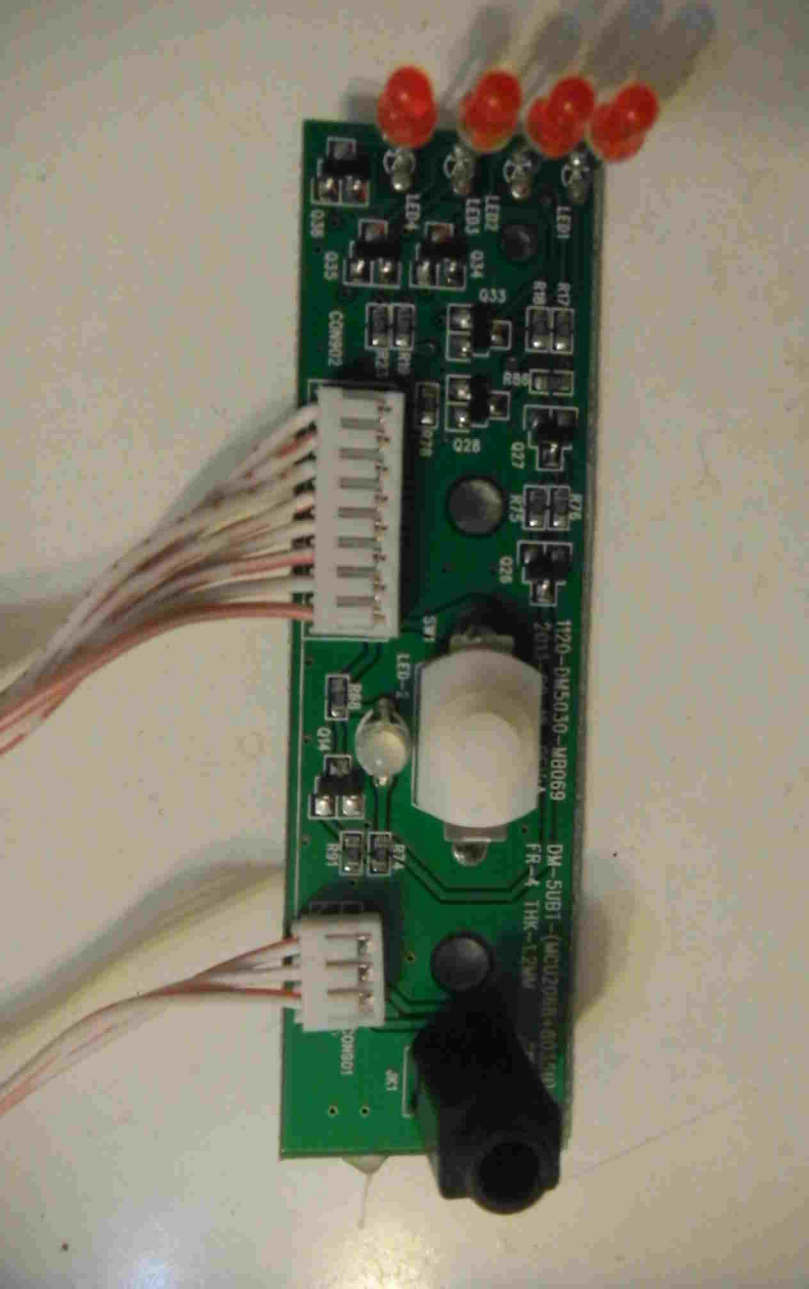
BT Module

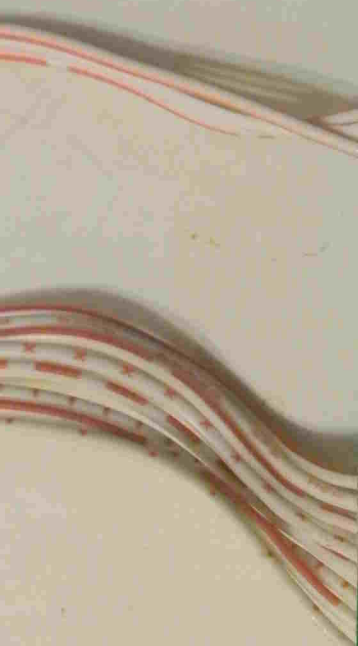
2.4G RF Module











AUX-R
GND
AUX-L

Cd

RADIO-LED
USB-LED
AUX-LED
BT-LED
SYS-POW
3V3
K1
GND

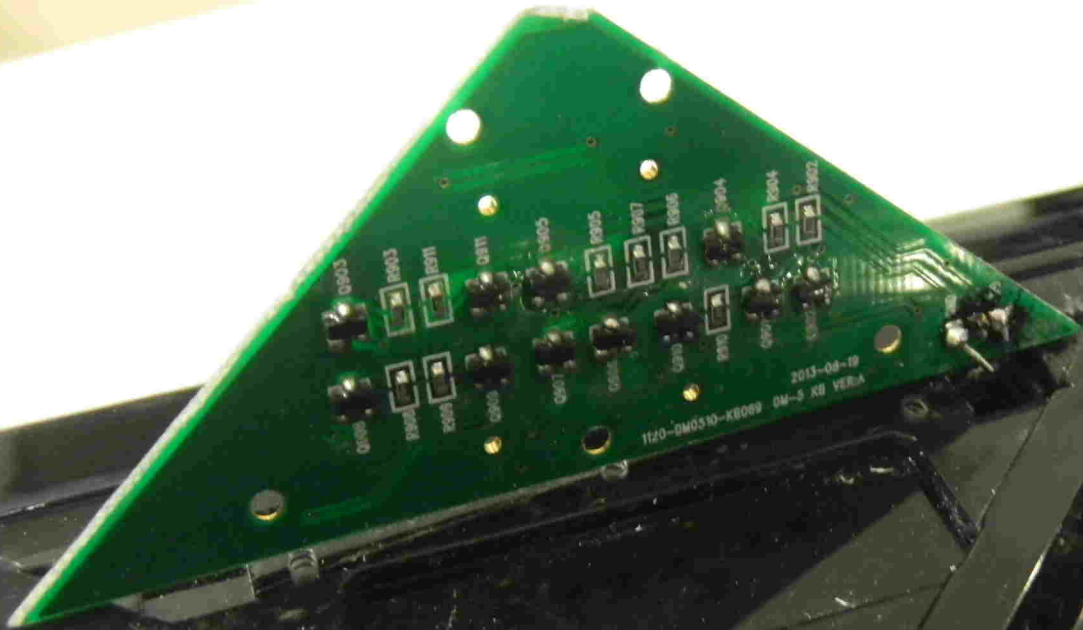




A triangular green PCB with the following components and labels:

- Top Pad:** Labeled "VOL+".
- Second Row (Left to Right):** Labeled "SEEK-", "PLAY", and "SEEK+".
- Third Row (Left to Right):** Labeled "MODE", "RANDOM", and "VOL-".
- Bottom Row (Left to Right):** Labeled "PWR", "1", "2", and "3".

Each of these labels is positioned next to a circular gold-plated pad with a white grid pattern. The board is connected to a larger green PCB through gold-plated pads.



1120-0M0510-KB089 0M-5 KB VER.A 2013-08-19

Q903
R903
R911
Q811
Q905
Q907
Q910
Q904
R902
R902