

FIGURE 1  
LED LCD TV (M/N: 75H10D)  
COVER REMOVED



FIGURE 2  
LED LCD TV (M/N: 75H10D)  
PANEL LABEL



*FIGURE 3*  
*LED LCD TV (M/N: 75H10D)*  
*MAIN BOARD (COMPONENT SIDE)*



*FIGURE 4*  
*LED LCD TV (M/N: 75H10D)*  
*MAIN BOARD (SOLDERED SIDE)*

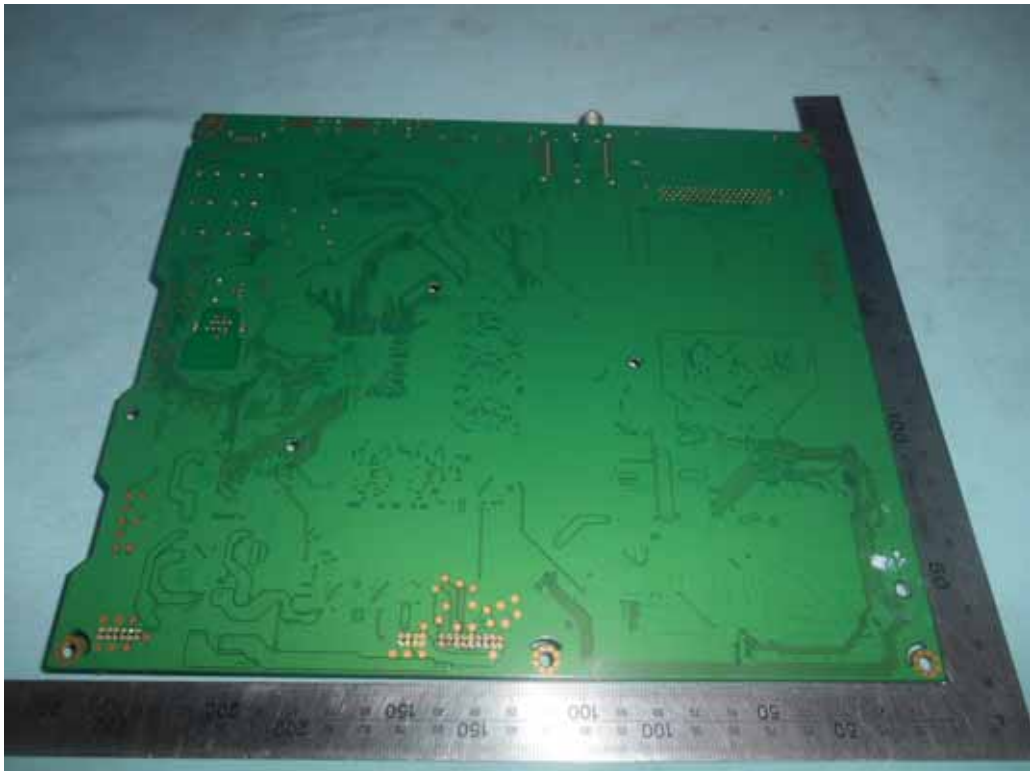


FIGURE 5  
LED LCD TV (M/N: 75H10D)  
CHIP ON MAIN BOARD



FIGURE 6  
LED LCD TV (M/N: 75H10D)  
CRYSTAL ON MAIN BOARD



FIGURE 7  
LED LCD TV (M/N: 75H10D)  
BOARD (COMPONENT SIDE)

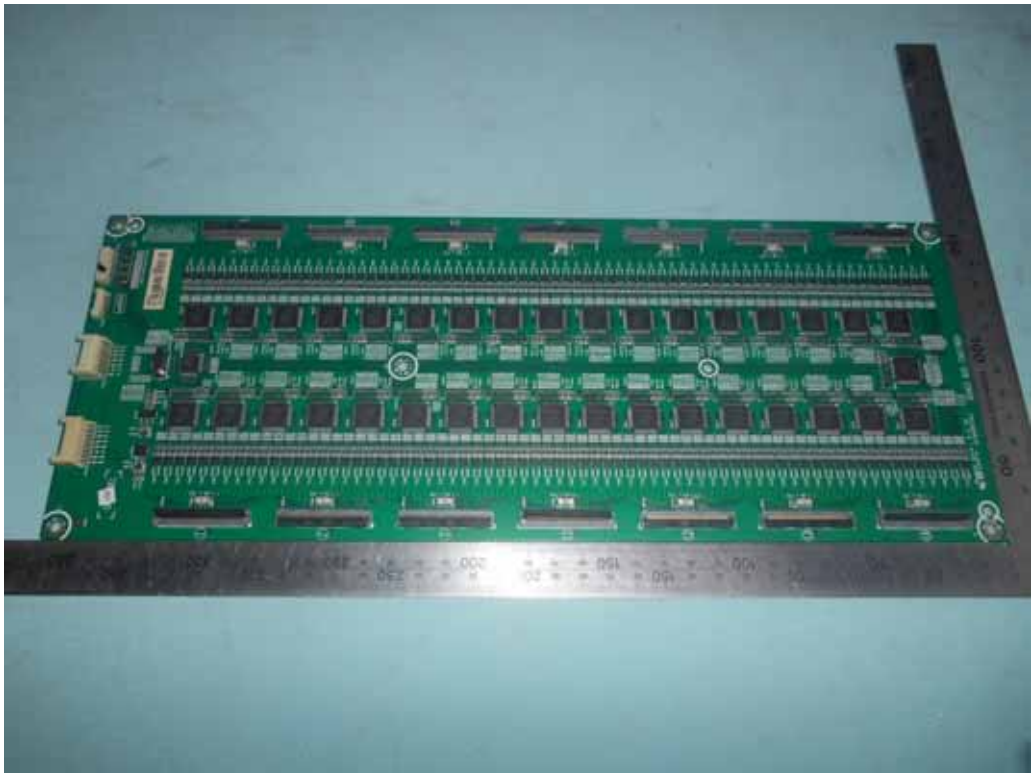


FIGURE 8  
LED LCD TV (M/N: 75H10D)  
BOARD (SOLDERED SIDE)

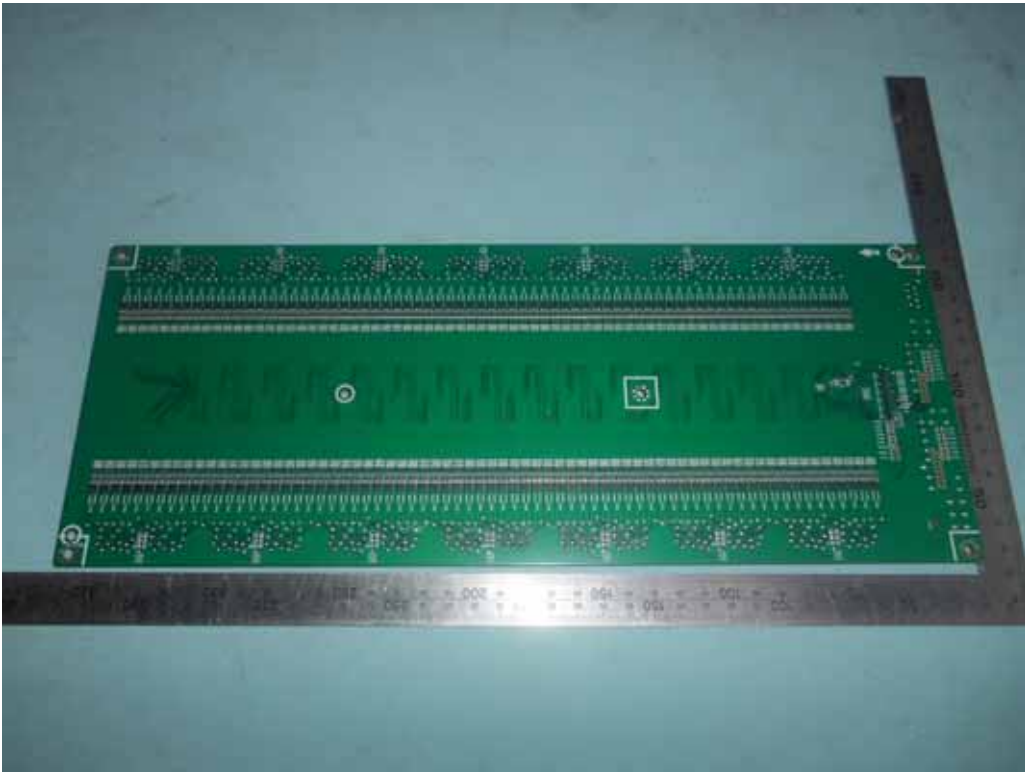


FIGURE 9  
LED LCD TV (M/N: 75H10D)  
CHIP AND CRYSTAL ON BOARD



LED LCD TV (M/N: 75H10D)  
POWER BOARD (COMPONENT SIDE)



FIGURE 11  
LED LCD TV (M/N: 75H10D)  
POWER BOARD (SOLDERED SIDE)

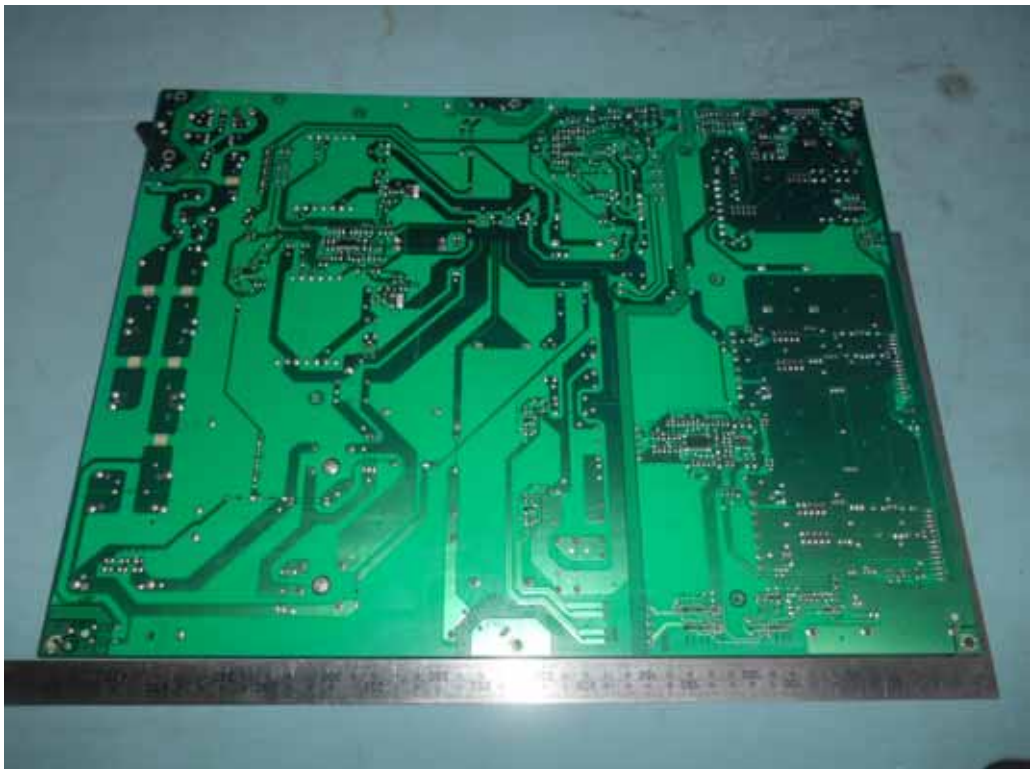


FIGURE 12  
LED LCD TV (M/N: 75H10D)  
TUNER BOARD

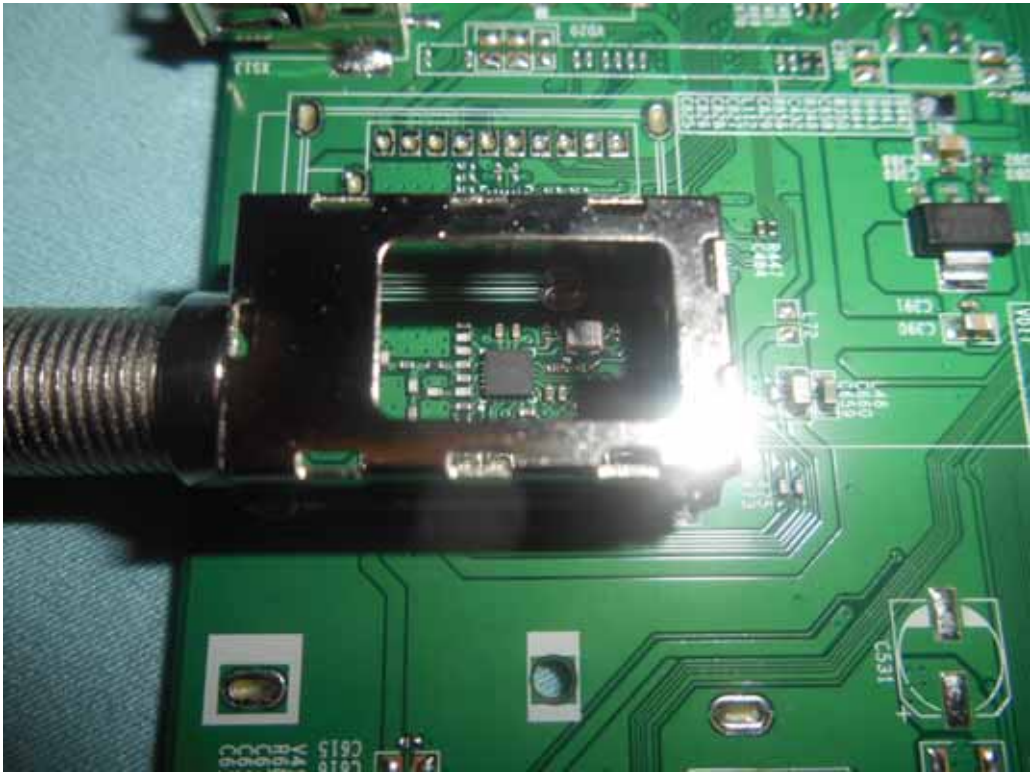
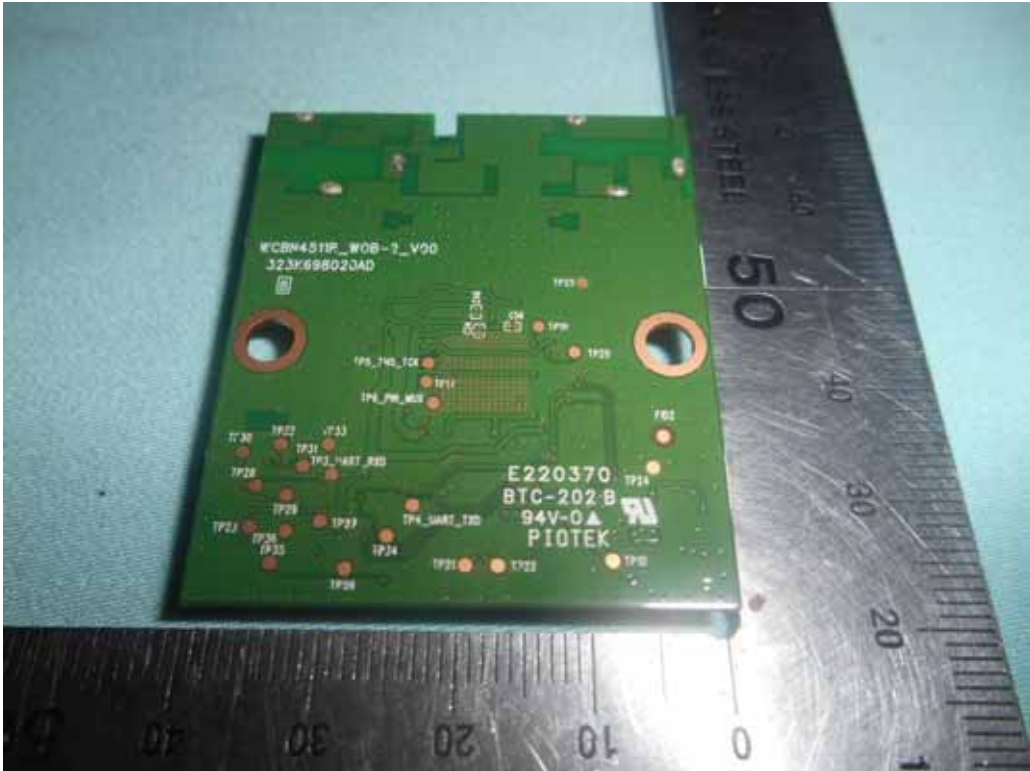


FIGURE 13  
LED LCD TV (M/N: 75H10D)  
RF BOARD (COMPONENT SIDE)



FIGURE 14  
LED LCD TV (M/N: LC-65P7000U)  
RF BOARD (SOLDERED SIDE)





*FIGURE 15*  
*LED LCD TV (M/N: 75H10D)*  
*RF BOARD LABEL*



*FIGURE 16*  
*LED LCD TV (M/N: 75H10D)*  
*RF BOARD COVER REMOVED*



*FIGURE 17*  
*LED LCD TV (M/N: 75H10D)*  
*LCD PANEL BOARD (COMPONENT SIDE)*



*FIGURE 18*  
*LED LCD TV (M/N: 75H10D)*  
*LCD PANEL BOARD (SOLDERED SIDE)*

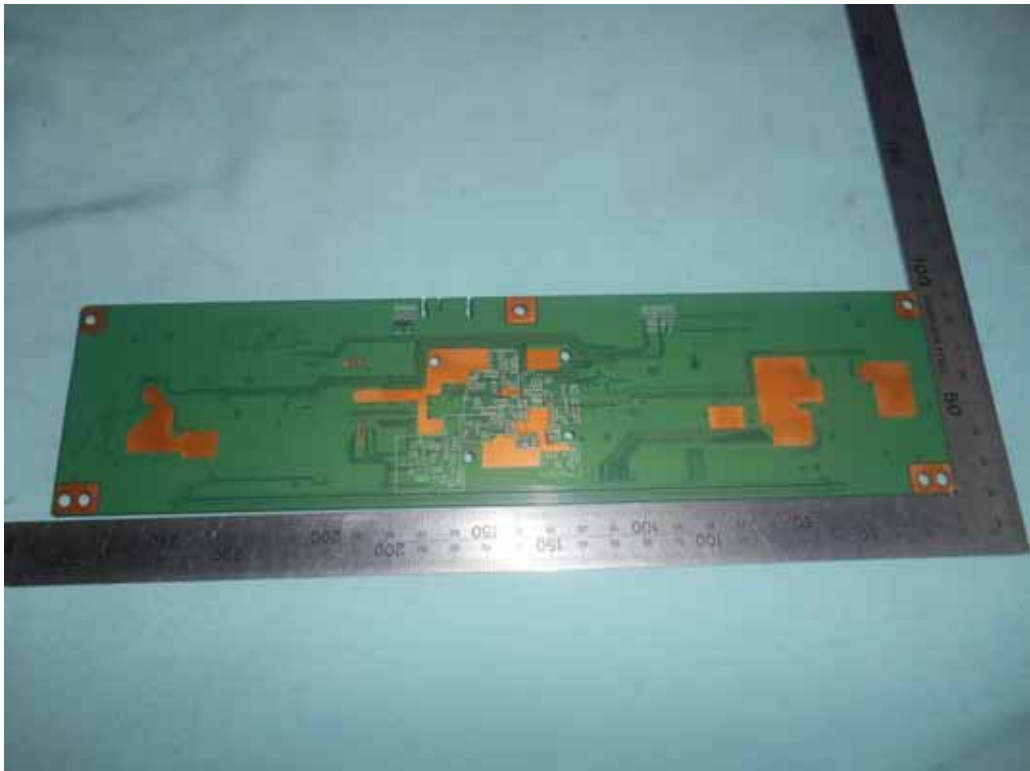


FIGURE 19  
LED LCD TV (M/N: 75H10D)  
CHIP ON LCD PANEL BOARD



FIGURE 20  
LED LCD TV (M/N: 75H10D)  
DEBUG#1



FIGURE 21  
LED LCD TV (M/N: 75H10D)  
DEBUG#2



FIGURE 22  
LED LCD TV (M/N: 75H10D)  
DEBUG#3



FIGURE 23  
LED LCD TV (M/N: 75H10D)  
DEBUG#4

