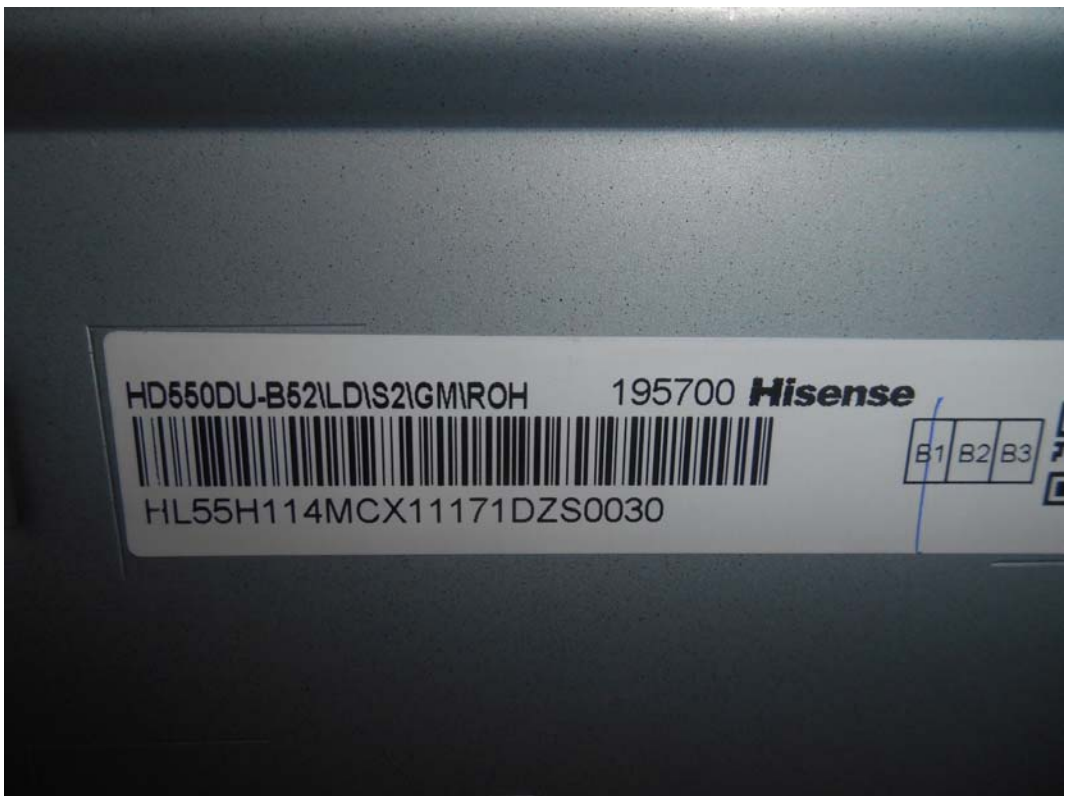


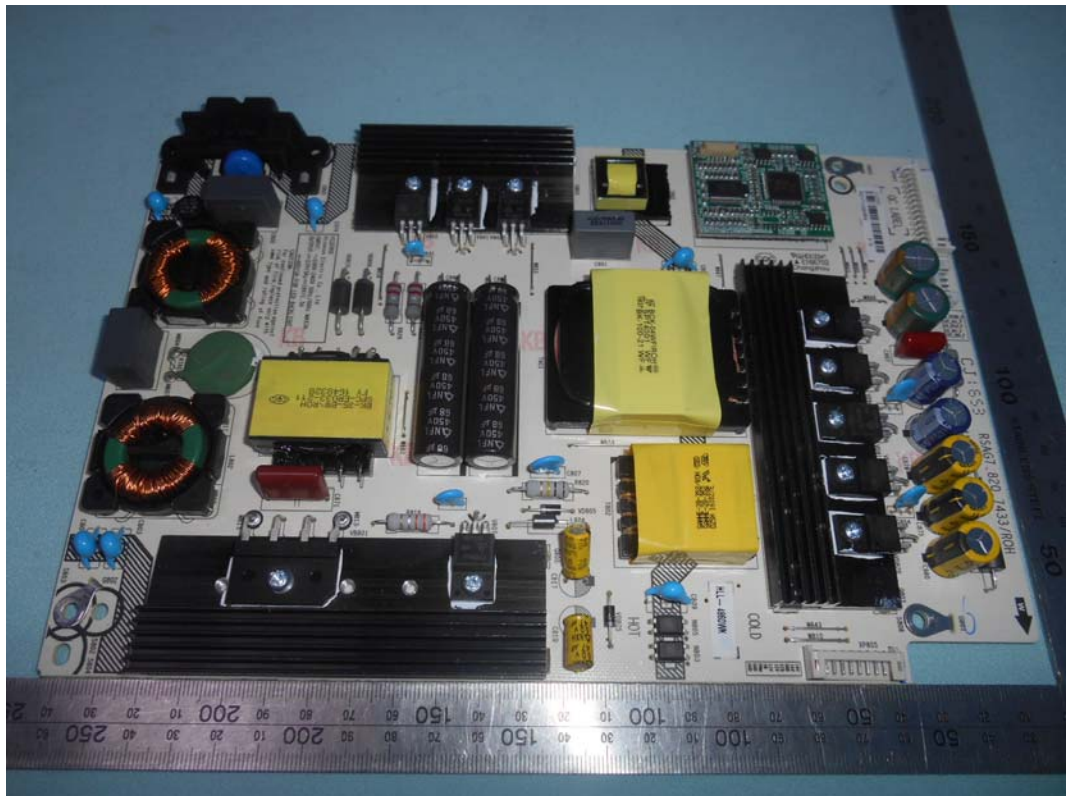
*FIGURE 1*  
*LED LCD TV (M/N: 55H8C)*  
*COVER REMOVED*



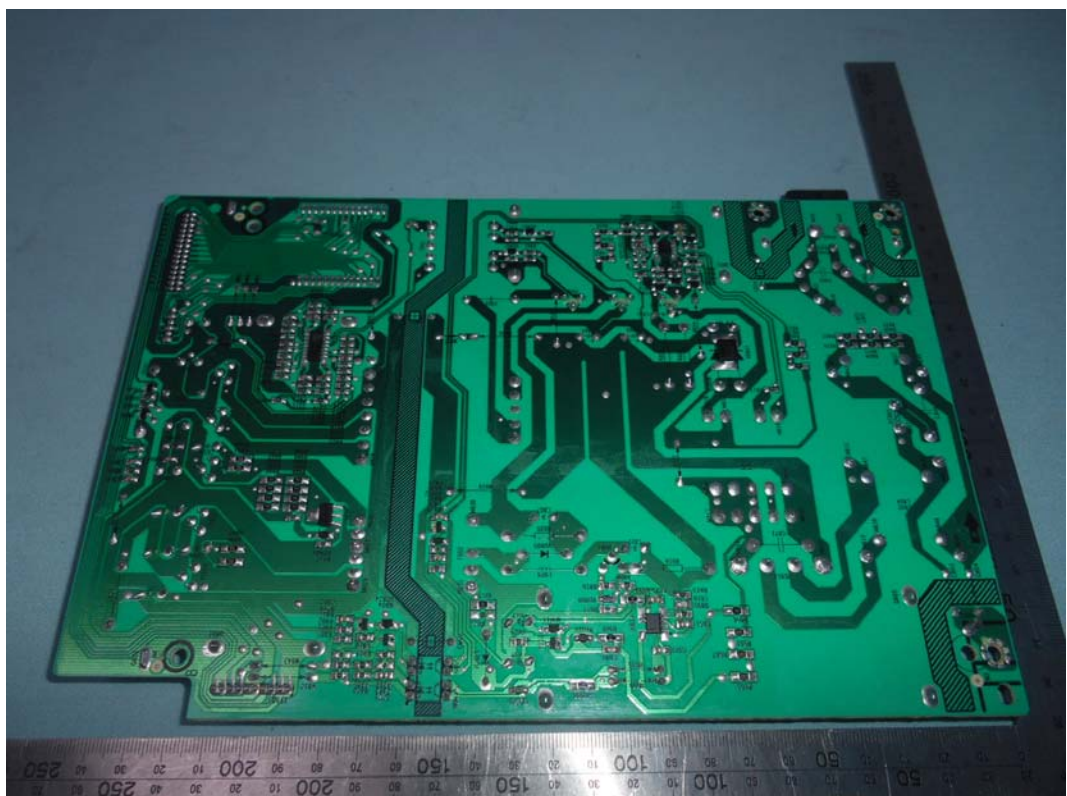
*FIGURE 2*  
*LED LCD TV (M/N: 55H8C)*  
*LCD PANEL LABEL*



*FIGURE 3*  
*LED LCD TV (M/N: 55H8C)*  
*POWER BOARD (COMPONENT SIDE)*

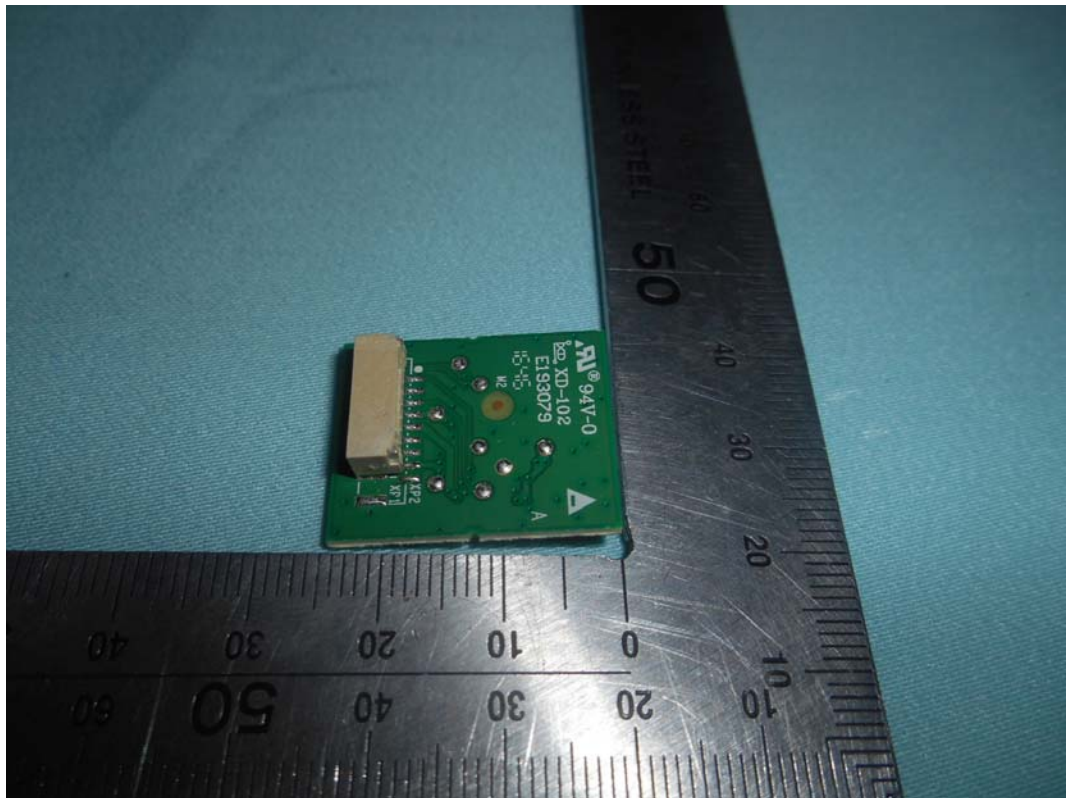


*FIGURE 4*  
*LED LCD TV (M/N: 55H8C)*  
*POWER BOARD (SOLDERED SIDE)*

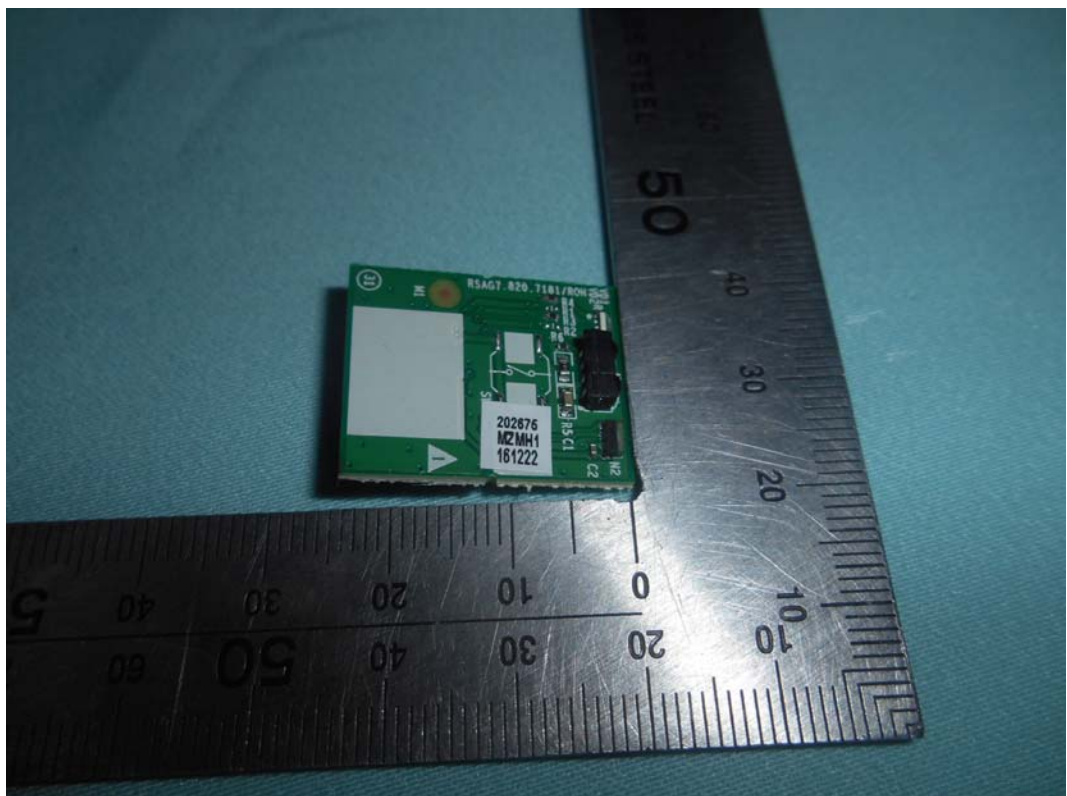




*FIGURE 5*  
*LED LCD TV (M/N: 55H8C)*  
*IR BOARD (COMPONENT SIDE)*



*FIGURE 6*  
*LED LCD TV (M/N: 55H8C)*  
*IR BOARD (SOLDERED SIDE)*



*FIGURE 7*  
*LED LCD TV (M/N: 55H8C)*  
*MAIN BOARD (COMPONENT SIDE)*



*FIGURE 8*  
*LED LCD TV (M/N: 55H8C)*  
*MAIN BOARD (SOLDERED SIDE)*

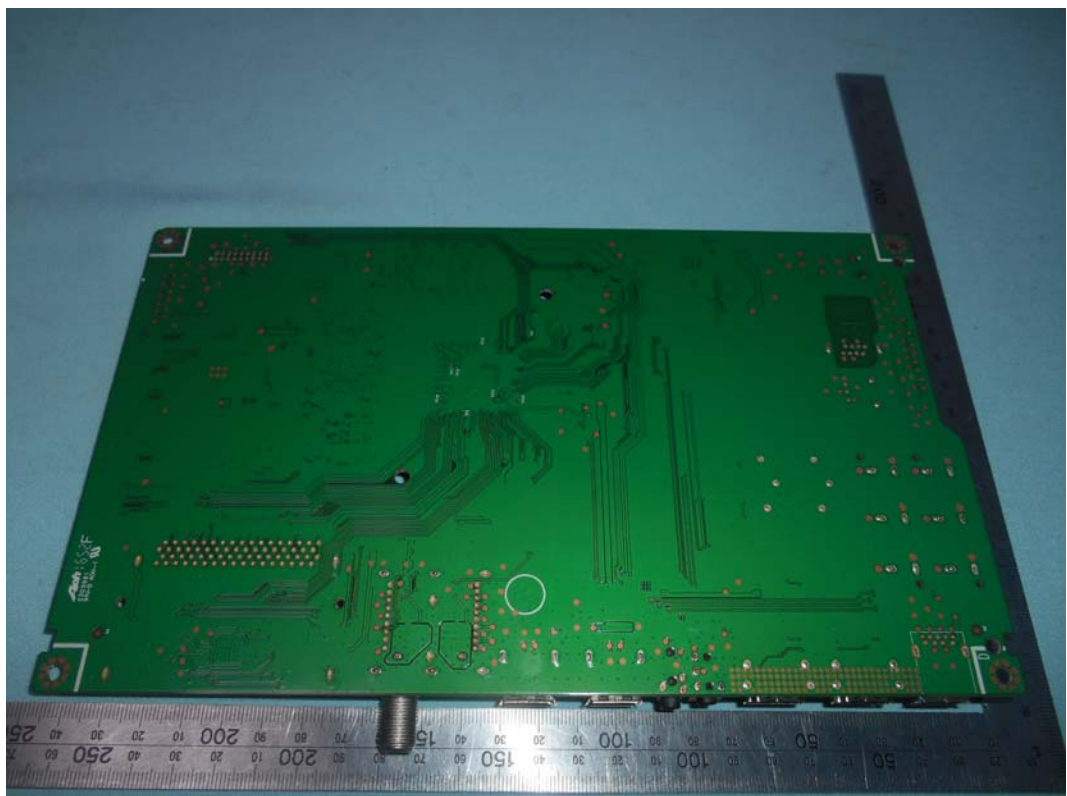
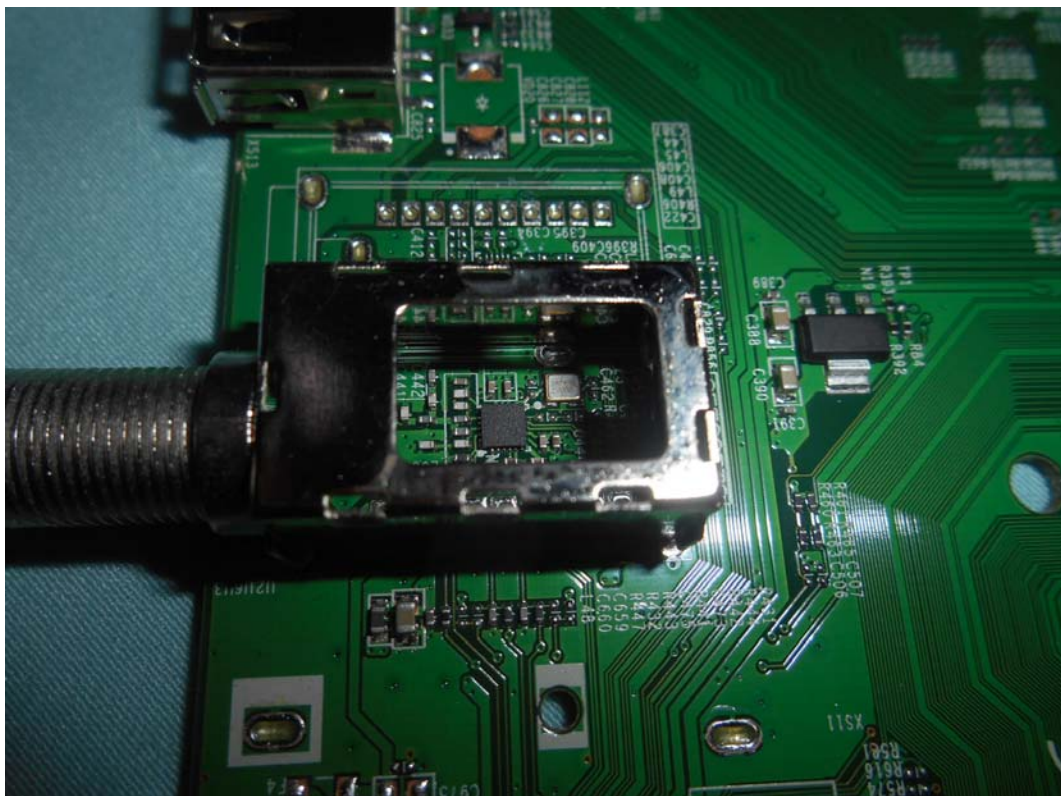




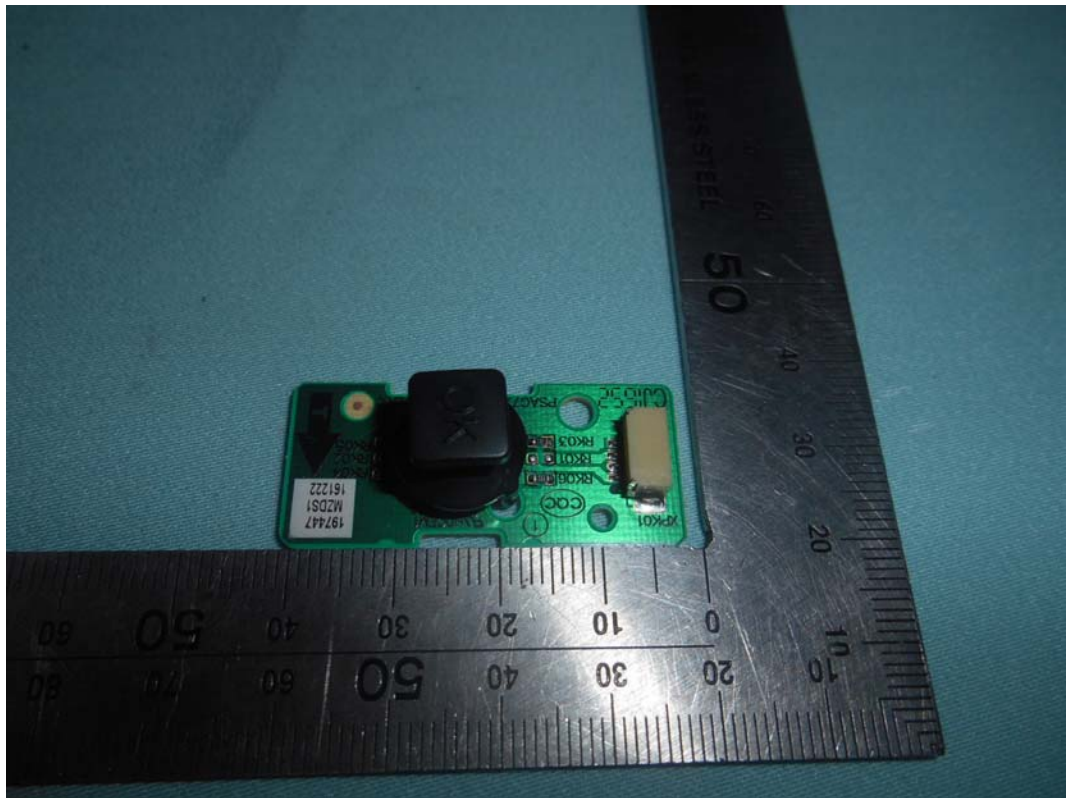
FIGURE 9  
LED LCD TV (M/N: 55H8C)  
CHIP AND CRYSTAL ON MAIN BOARD



FIGURE 10  
LED LCD TV (M/N: 55H8C)  
TUNER



*FIGURE 11*  
*LED LCD TV (M/N: 55H8C)*  
*KEY BOARD (COMPONENT SIDE)*



*FIGURE 12*  
*LED LCD TV (M/N: 55H8C)*  
*KEY BOARD (SOLDERED SIDE)*

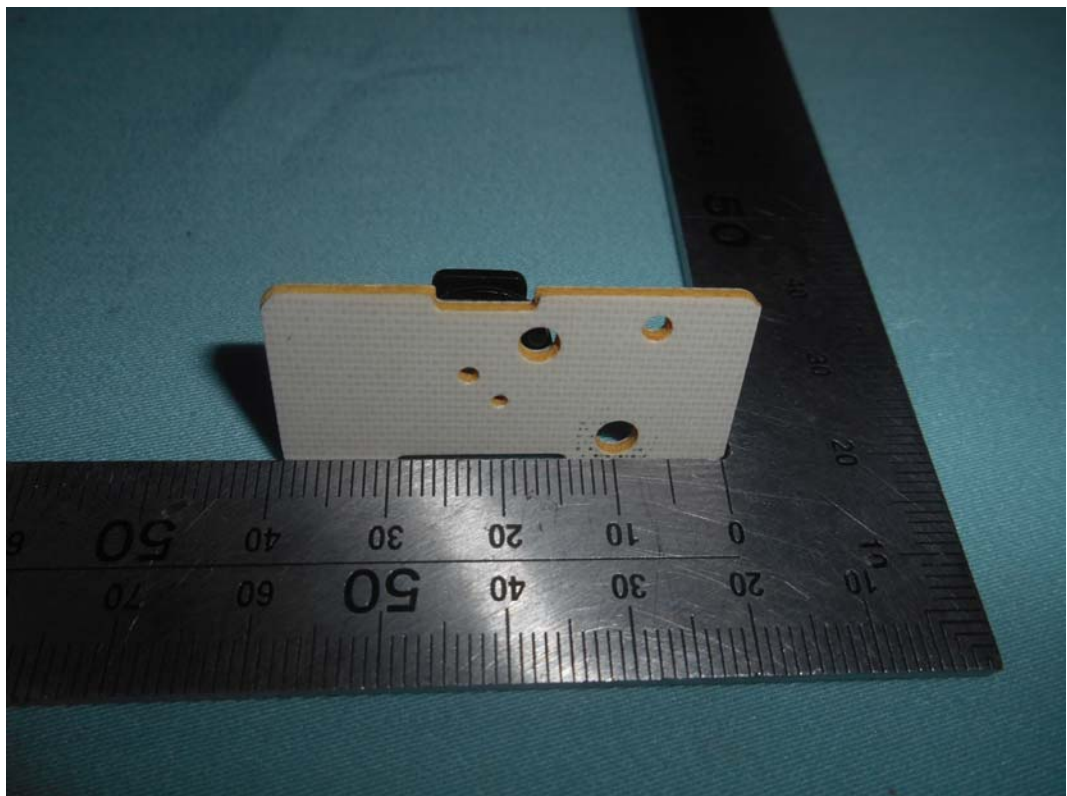
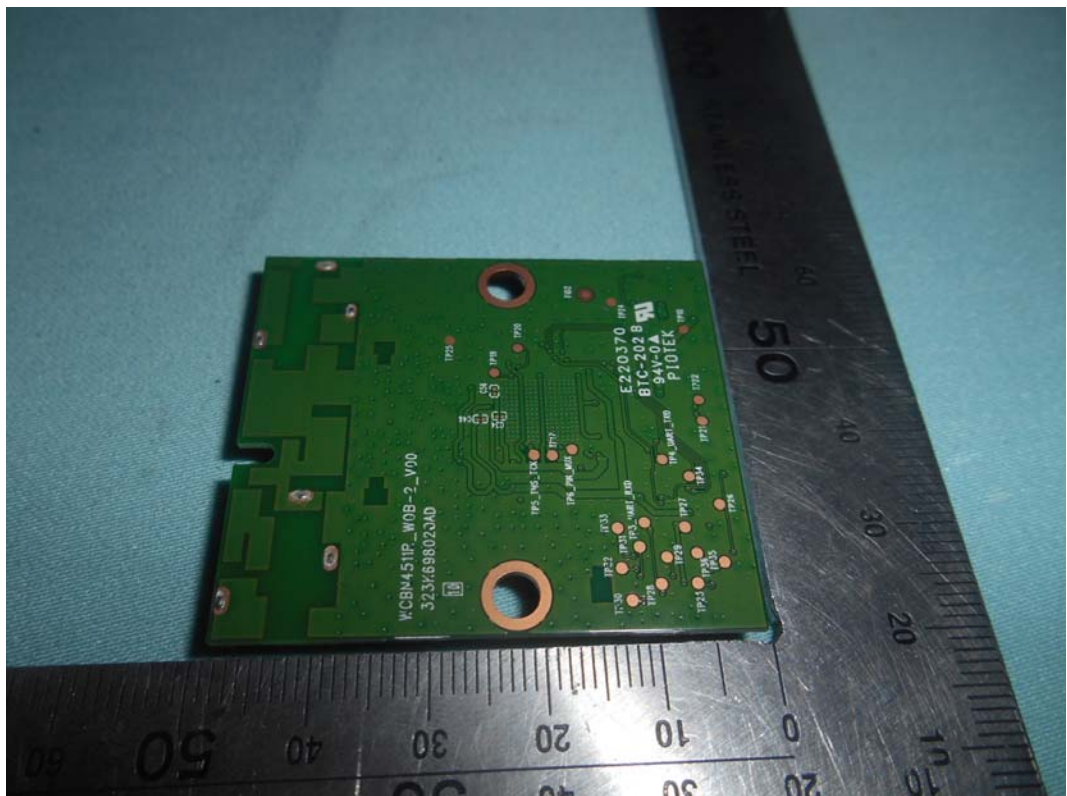




FIGURE 13  
LED LCD TV (M/N: 55H8C)  
RF BOARD (COMPONENT SIDE)



FIGURE 14  
LED LCD TV (M/N: 55H8C)  
RF BOARD (SOLDERED SIDE)



*FIGURE 15*  
*LED LCD TV (M/N: 55H8C)*  
*RF LABEL*



*FIGURE 16*  
*LED LCD TV (M/N: 55H8C)*  
*CHIP AND CRYSTAL ON RF BOARD*





*FIGURE 17*  
*LED LCD TV (M/N: 55H8C)*  
*PANEL BOARD (COMPONENT SIDE)*



*FIGURE 18*  
*LED LCD TV (M/N: 55H8C)*  
*PANEL BOARD (SOLDERED SIDE)*

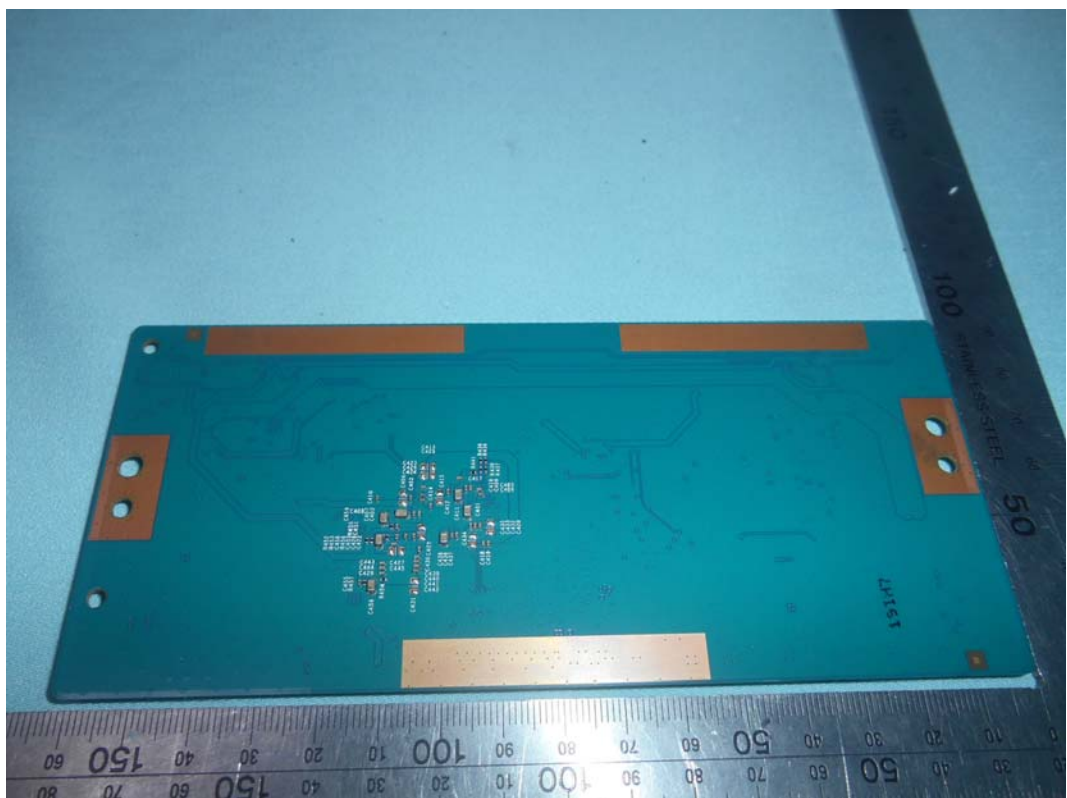


FIGURE 19  
LED LCD TV (M/N: 55H8C)  
CHIP AND CRYSTAL ON PANEL BOARD

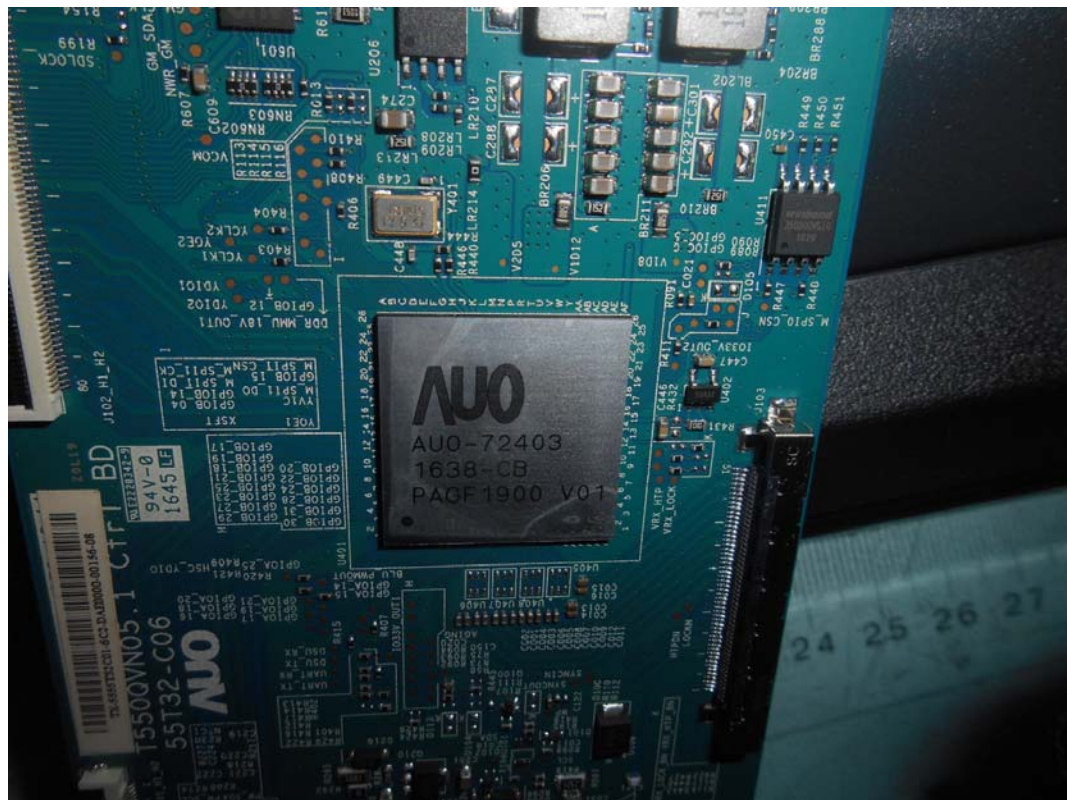


FIGURE 20  
LED LCD TV (M/N: 55H8C)  
DEBUG#1

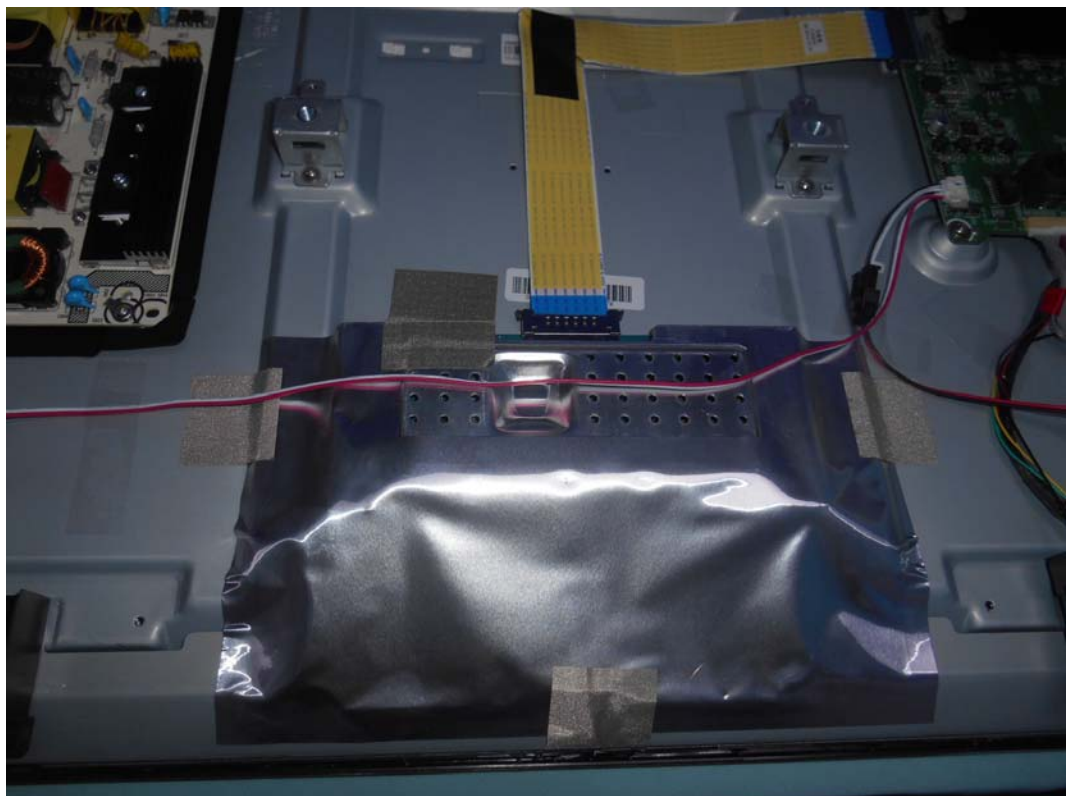




FIGURE 21  
LED LCD TV (M/N: 55H8C)  
DEBUG#2

