

FIGURE 1
LED LCD TV (M/N: 55H5D)
COVER REMOVED



FIGURE 2
LED LCD TV (M/N: 55H5D)
LCD PANEL LABEL



FIGURE 3
LED LCD TV (M/N: 55H5D)
TUNER



FIGURE 4
LED LCD TV (M/N: 55H5D)
POWER BOARD (COMPONENT SIDE)

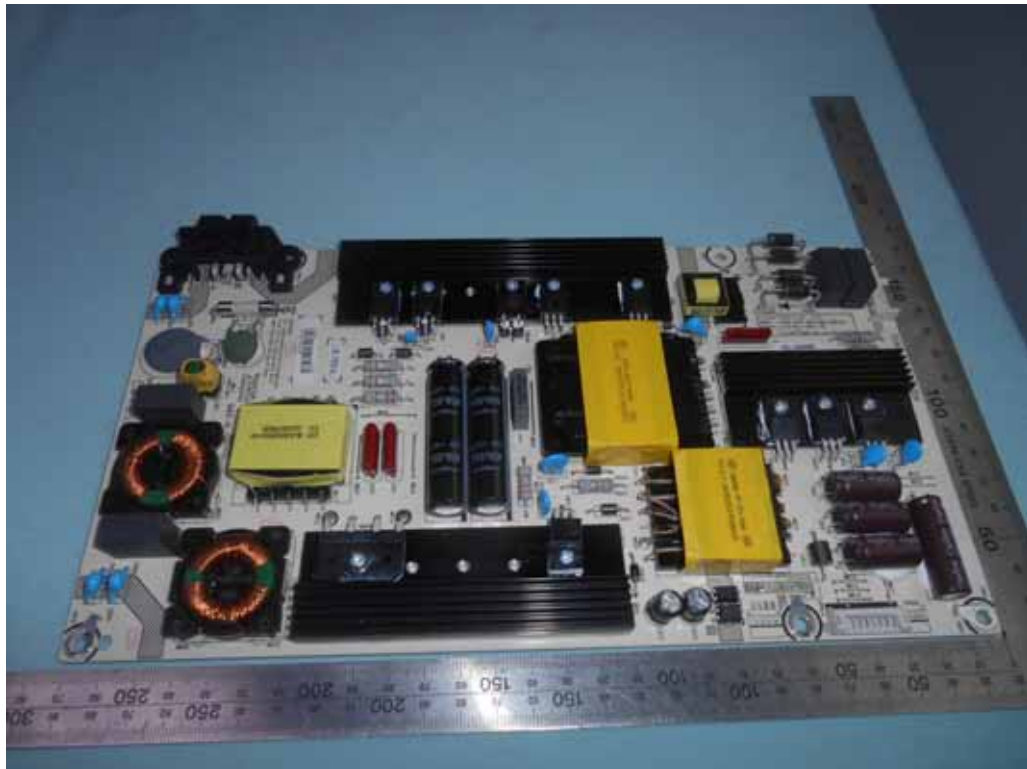


FIGURE 5
LED LCD TV (M/N: 55H5D)
POWER BOARD (SOLDERED SIDE)

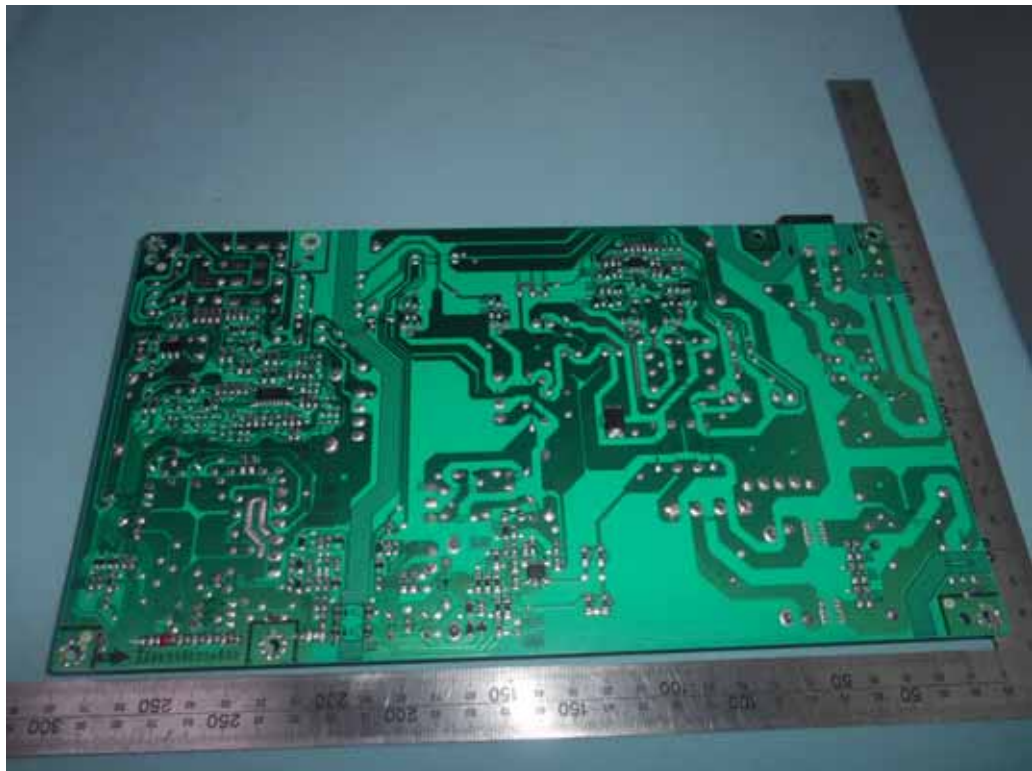


FIGURE 6
LED LCD TV (M/N: 55H5D)
WIFI BOARD (COMPONENT SIDE)

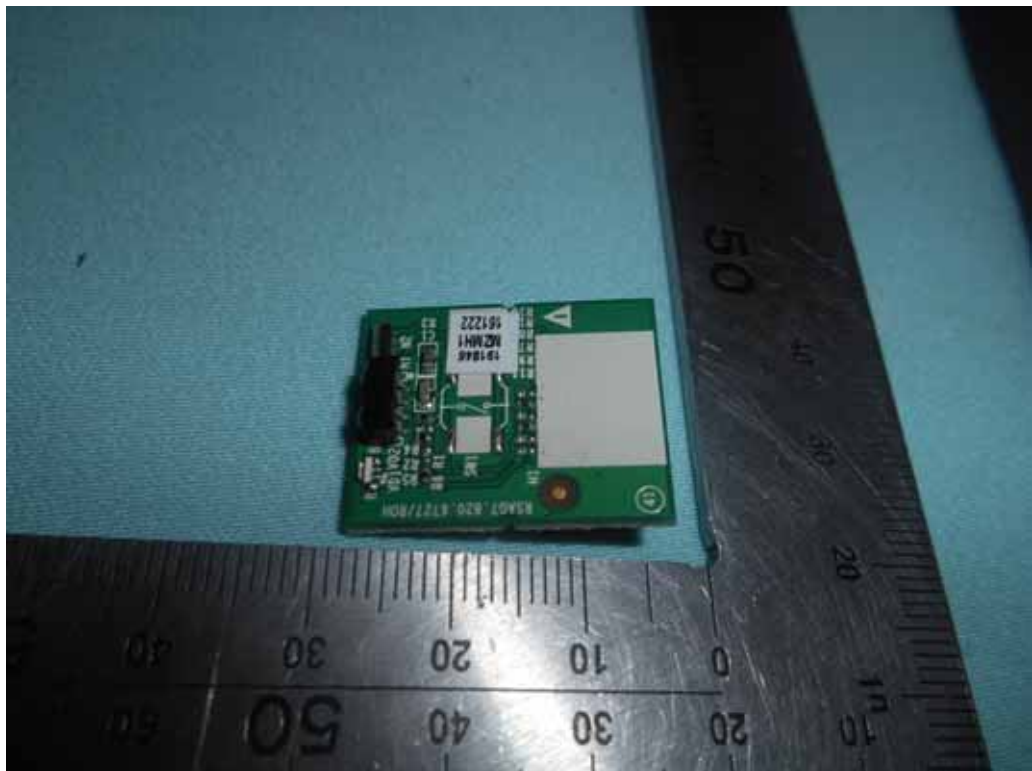


FIGURE 7
LED LCD TV (M/N: 55H5D)
WIFI BOARD (SOLDERED SIDE)

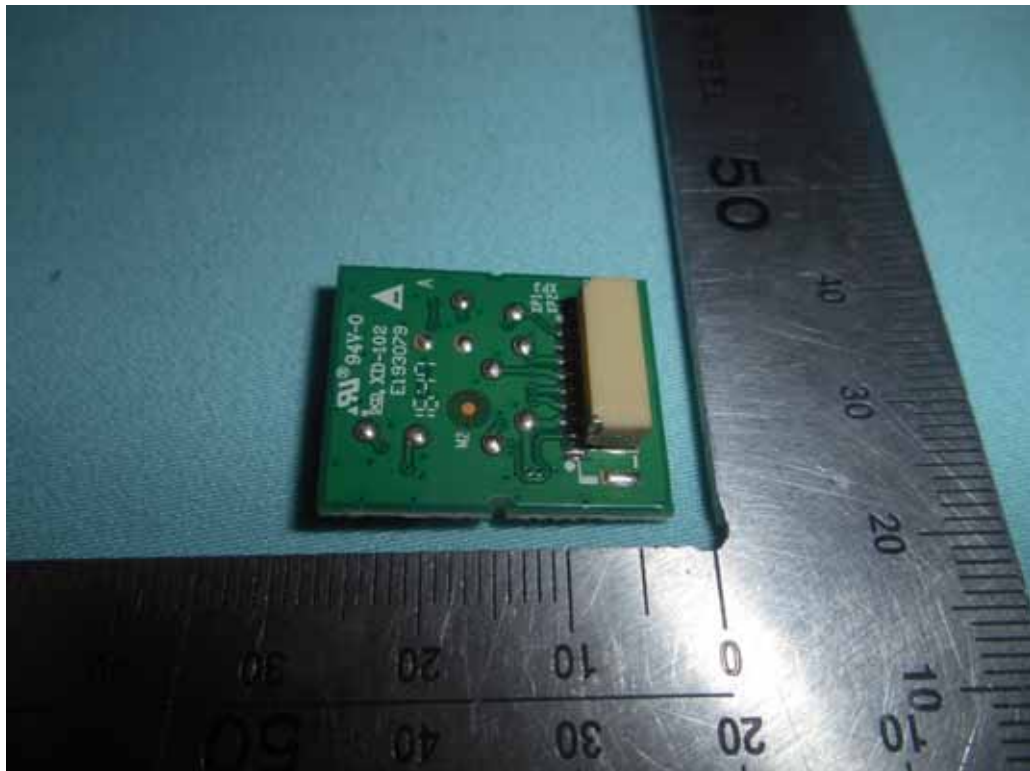


FIGURE 8
LED LCD TV (M/N: 55H5D)
KEY BOARD (COMPONENT SIDE)



FIGURE 9
LED LCD TV (M/N: 55H5D)
KEY BOARD (SOLDERED SIDE)

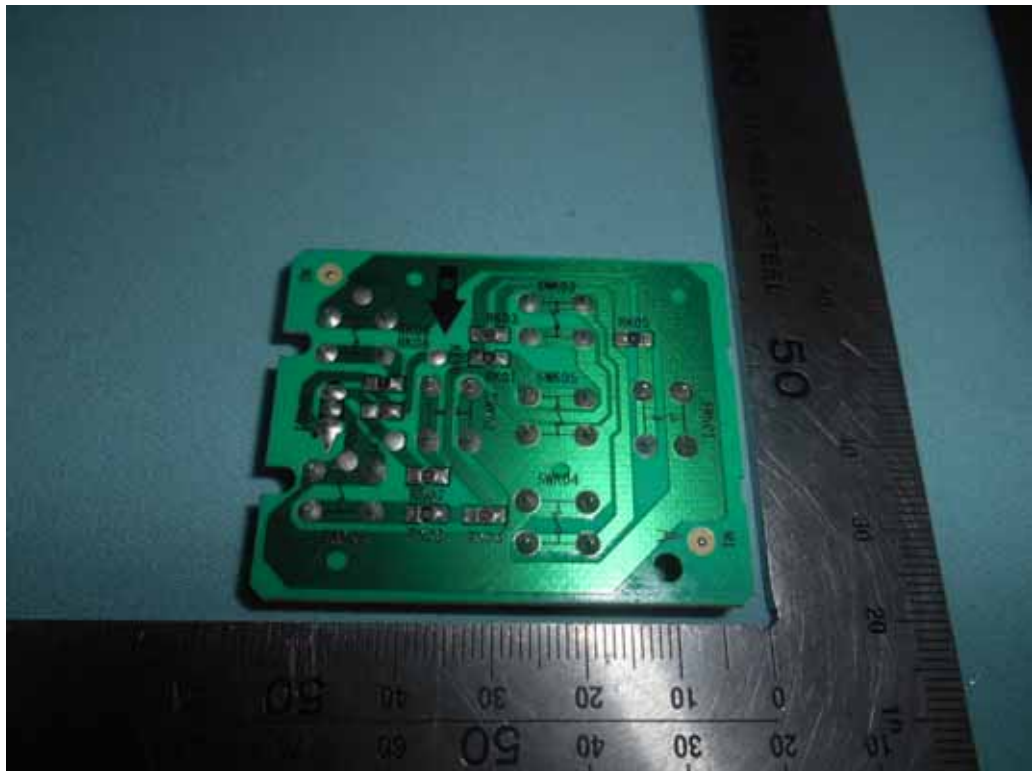


FIGURE 10
LED LCD TV (M/N: 55H5D)
MAIN BOARD (COMPONENT SIDE)



FIGURE 11
LED LCD TV (M/N: LC-75U)
MAIN BOARD (SOLDERED SIDE)

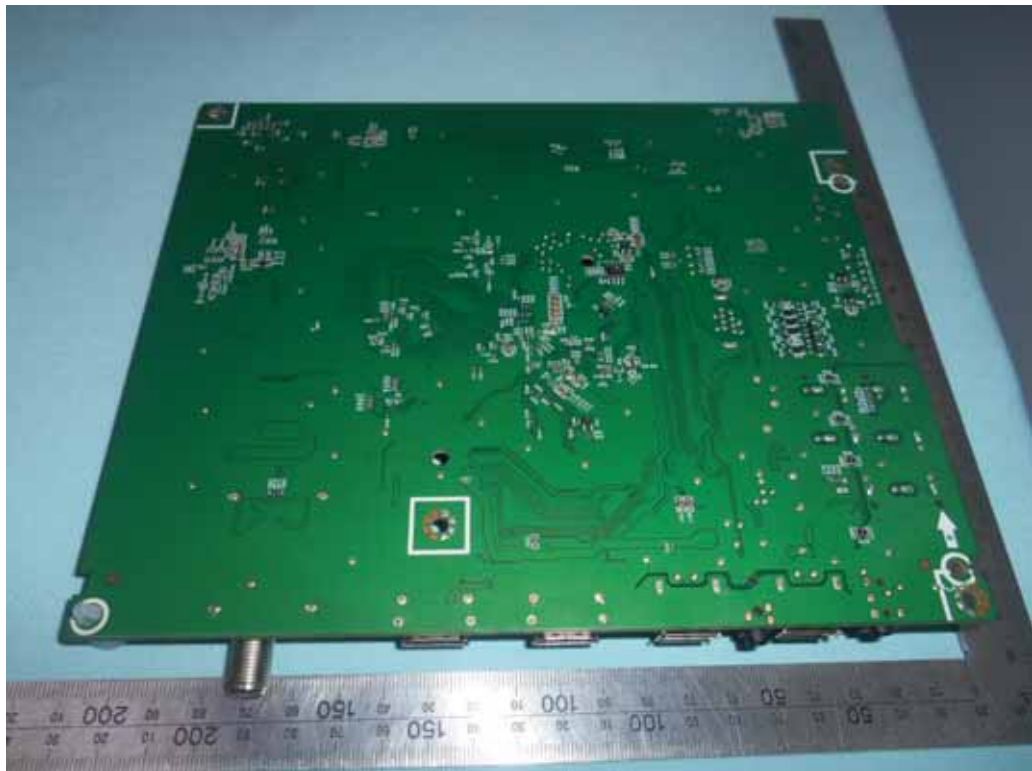


FIGURE 12
LED LCD TV (M/N: 55H5D)
CHIP AND CRYSTAL ON MAIN BOARD



FIGURE 13
LED LCD TV (M/N: 55H5D)
RF BOARD (COMPONENT SIDE)



FIGURE 14
LED LCD TV (M/N: 55H5D)
RF BOARD (SOLDERED SIDE)

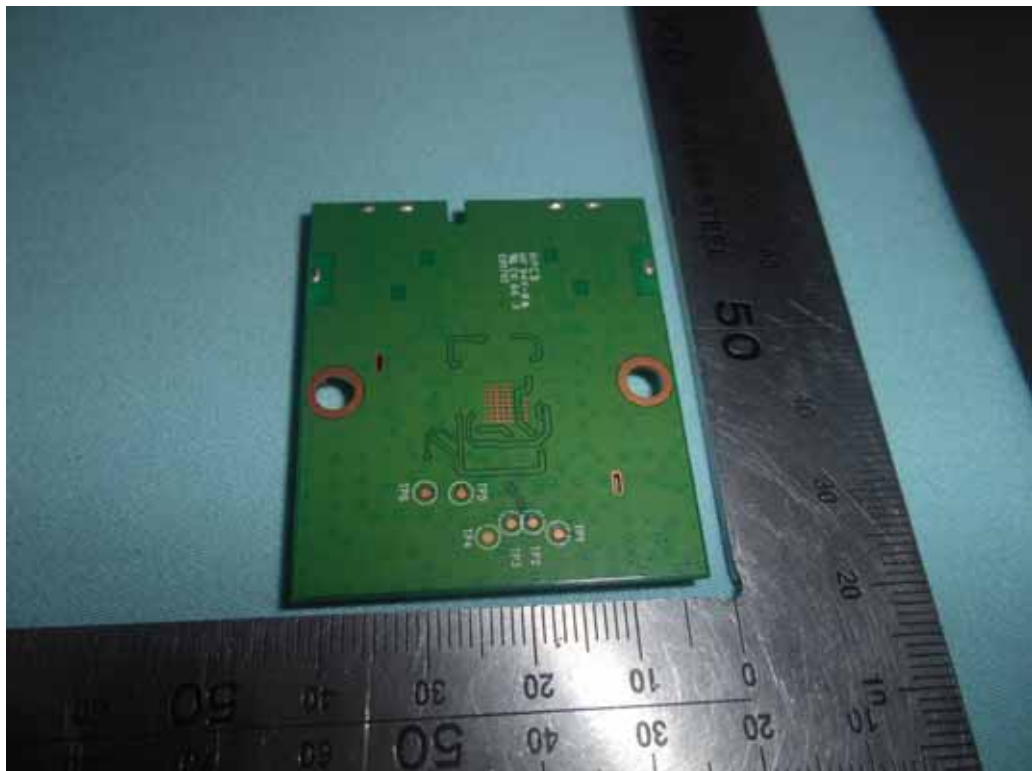


FIGURE 15
LED LCD TV (M/N: 55H5D)
RF LABEL



DEBUG

FIGURE 16
LED LCD TV (M/N: 55H5D)
DEBUG

