

FIGURE 1
LED LCD TV (M/N: 65H6D)
COVER REMOVED



FIGURE 2
LED LCD TV (M/N: 65H6D)
POWER BOARD (COMPONENT SIDE)



FIGURE 3
LED LCD TV (M/N: 65H6D)
POWER BOARD (SOLDERED SIDE)

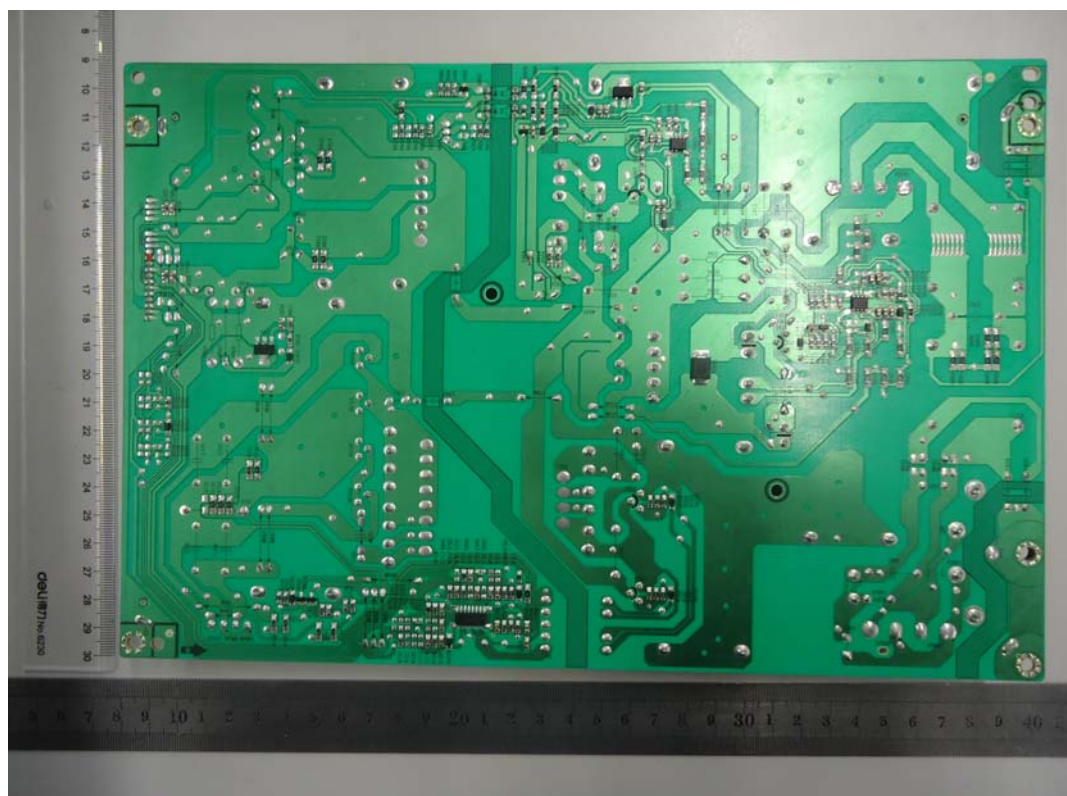


FIGURE 4
LED LCD TV (M/N: 65H6D)
MAIN BOARD (COMPONENT SIDE)

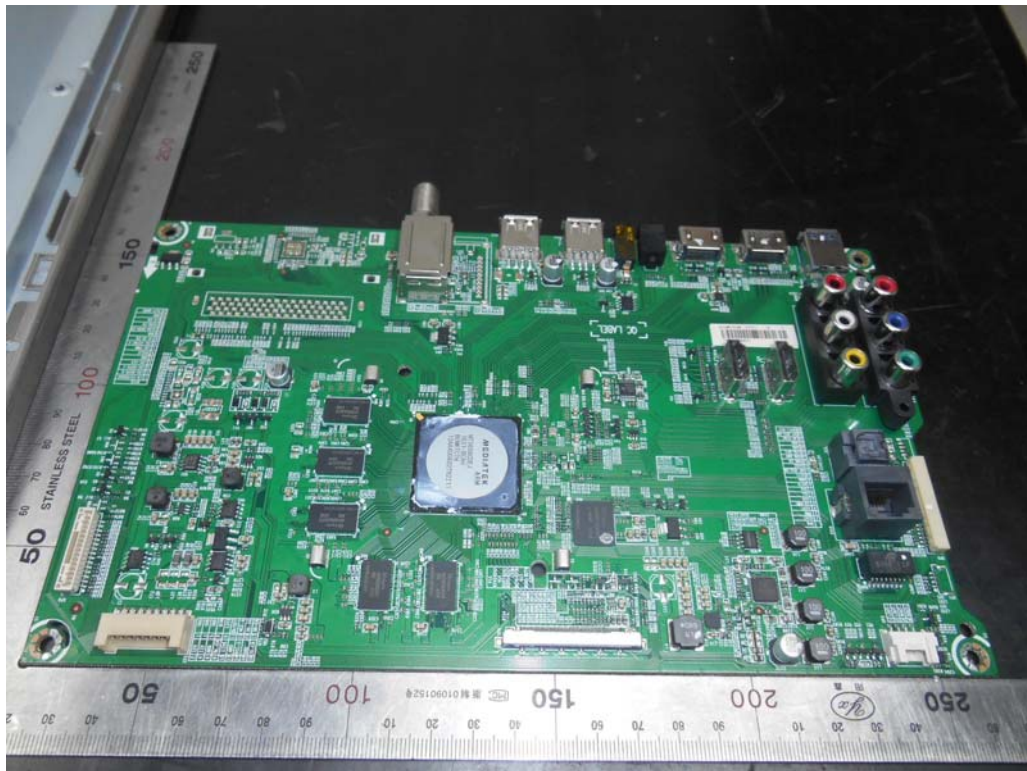


FIGURE 5
LED LCD TV (M/N: 65H6D)
MAIN BOARD (SOLDERED SIDE)

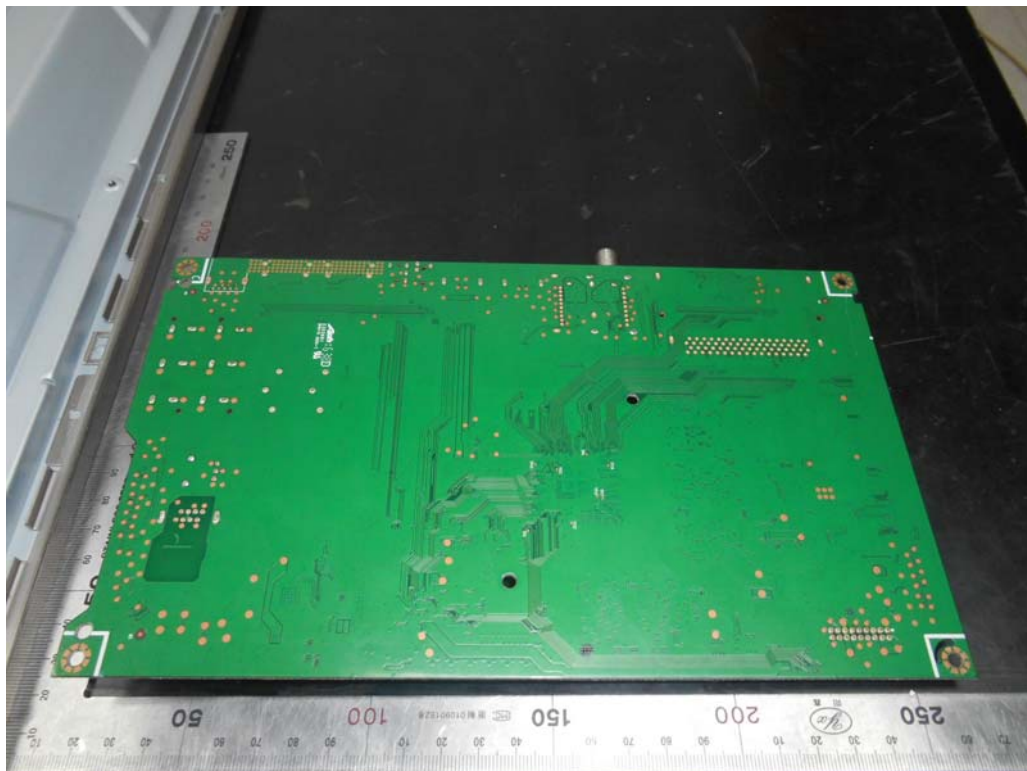


FIGURE 6
LED LCD TV (M/N: 65H6D)
CHIP & CRYSTAL ON MAIN BOARD

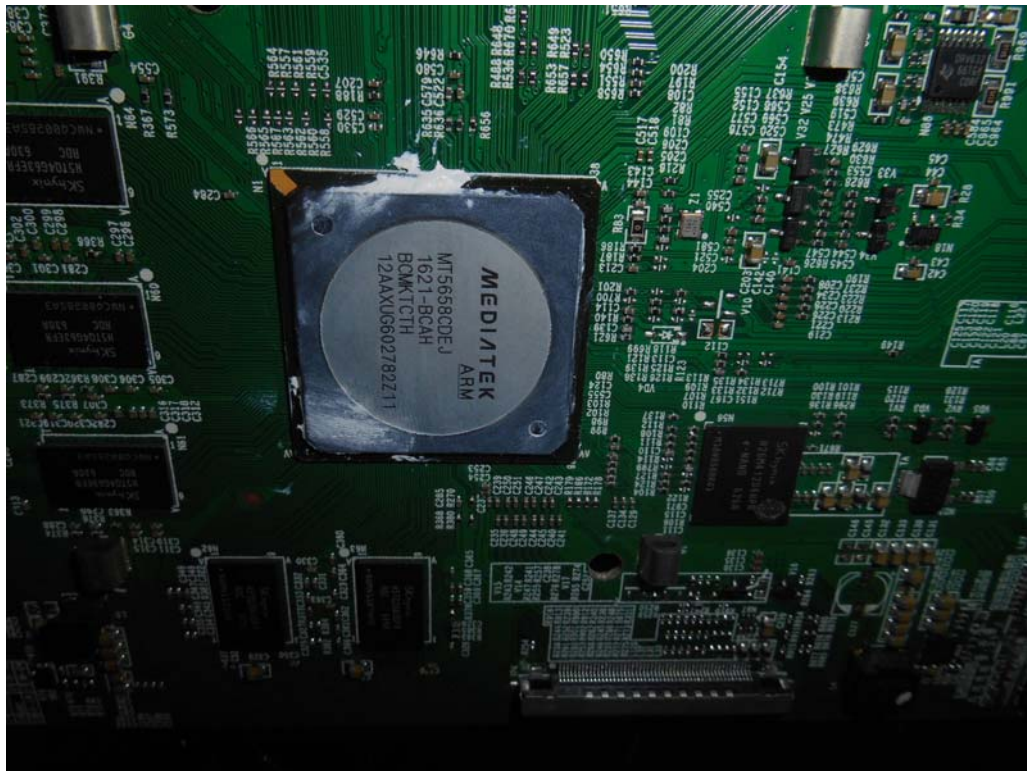


FIGURE 7
LED LCD TV (M/N: 65H6D)
TUNER

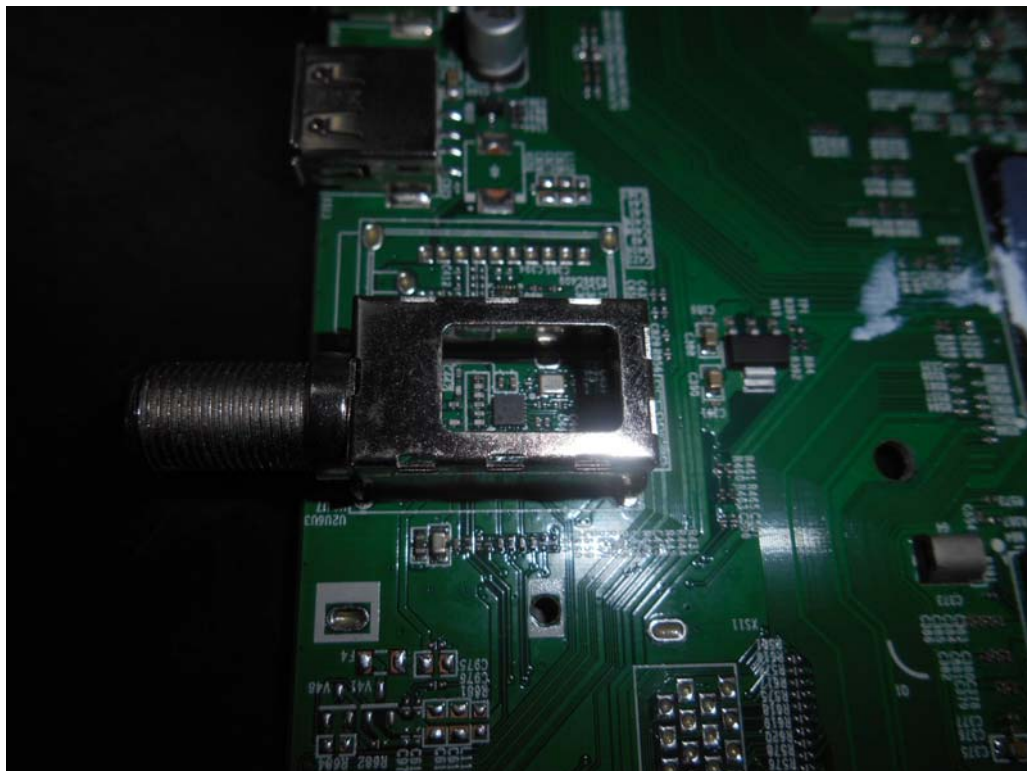


FIGURE 8
LED LCD TV (M/N: 65H6D)
PANEL CONTROL BOARD (COMPONENT SIDE)



FIGURE 9
LED LCD TV (M/N: 65H6D)
PANEL CONTROL BOARD (SOLDERED SIDE)

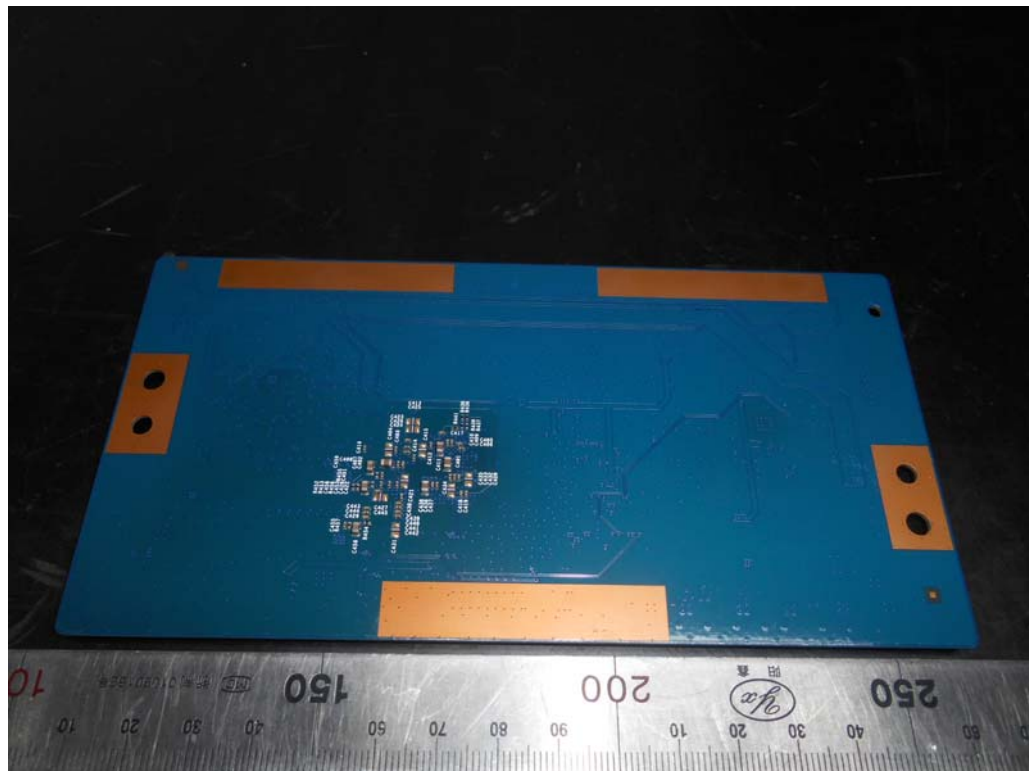


FIGURE 10
LED LCD TV (M/N: 65H6D)
CHIP & CRYSTAL ON PANEL BOARD

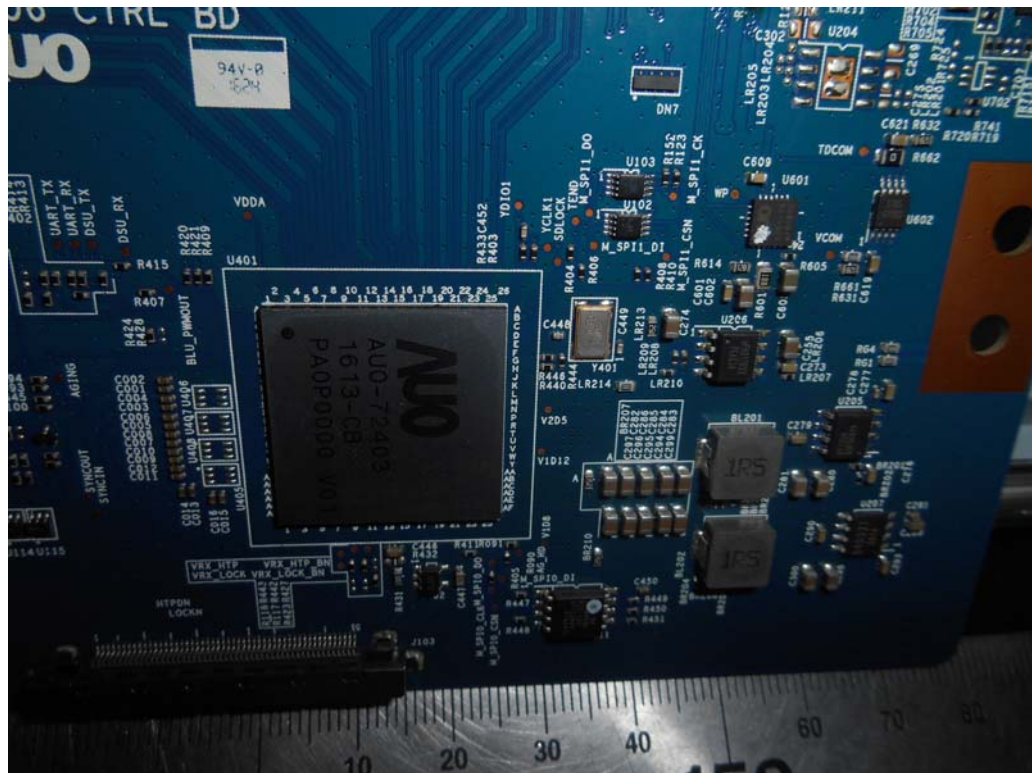


FIGURE 11
LED LCD TV (M/N: 65H6D)
RF BOARD (COMPONENT SIDE)



FIGURE 12
LED LCD TV (M/N: 65H6D)
RF BOARD (SOLDERED SIDE)

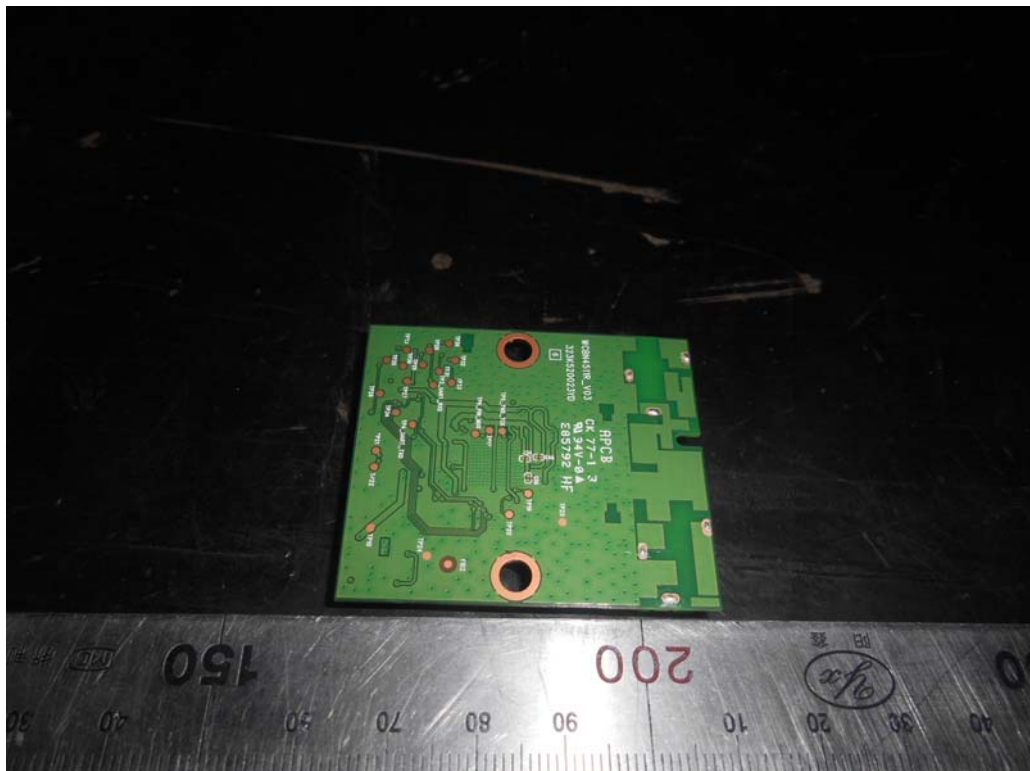


FIGURE 13
LED LCD TV (M/N: 65H6D)
RF BOARD LABEL



FIGURE 14
LED LCD TV (M/N: 65H6D)
RF BOARD COVER REMOVED

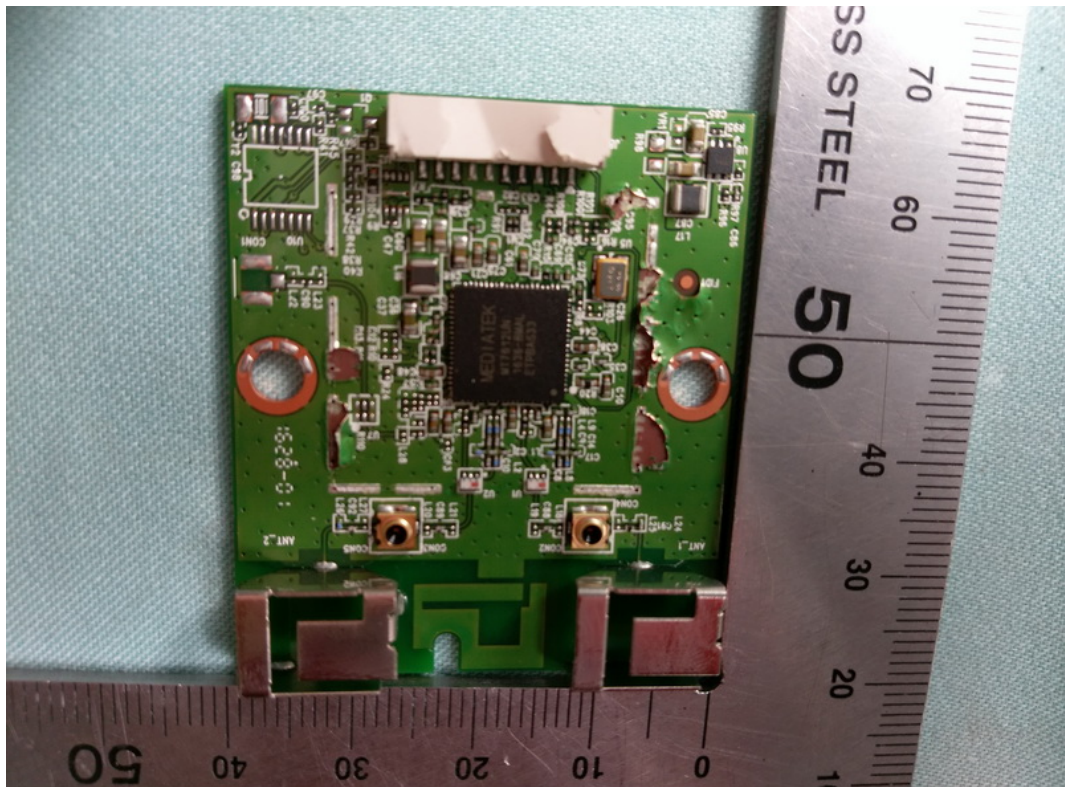


FIGURE 15
LED LCD TV (M/N: 65H6D)
KEY BOARD (COMPONENT SIDE)

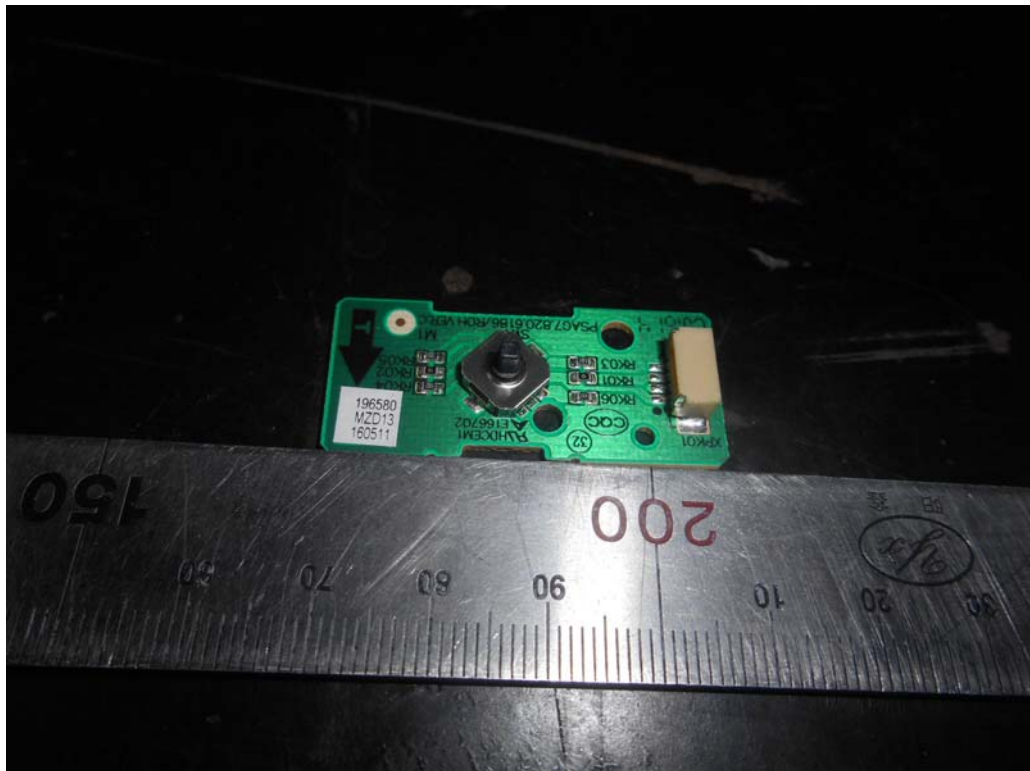


FIGURE 16
LED LCD TV (M/N: 65H6D)
KEY BOARD (SOLDERED SIDE)

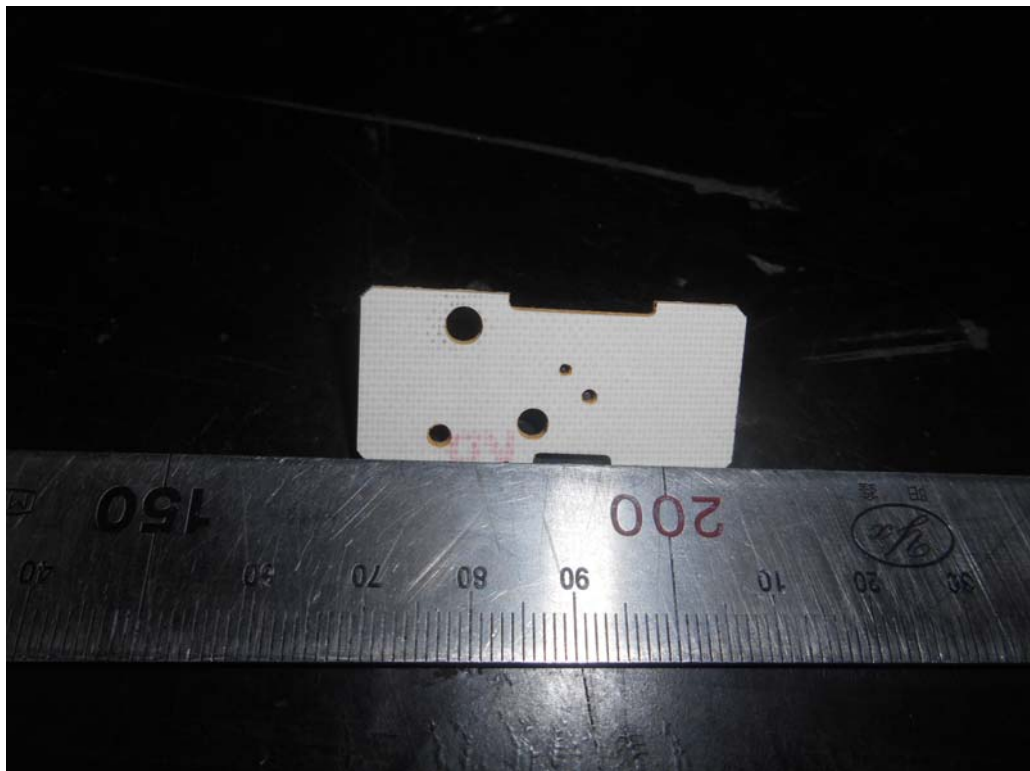


FIGURE 17
LED LCD TV (M/N: 65H6D)
IR BOARD (COMPONENT SIDE)

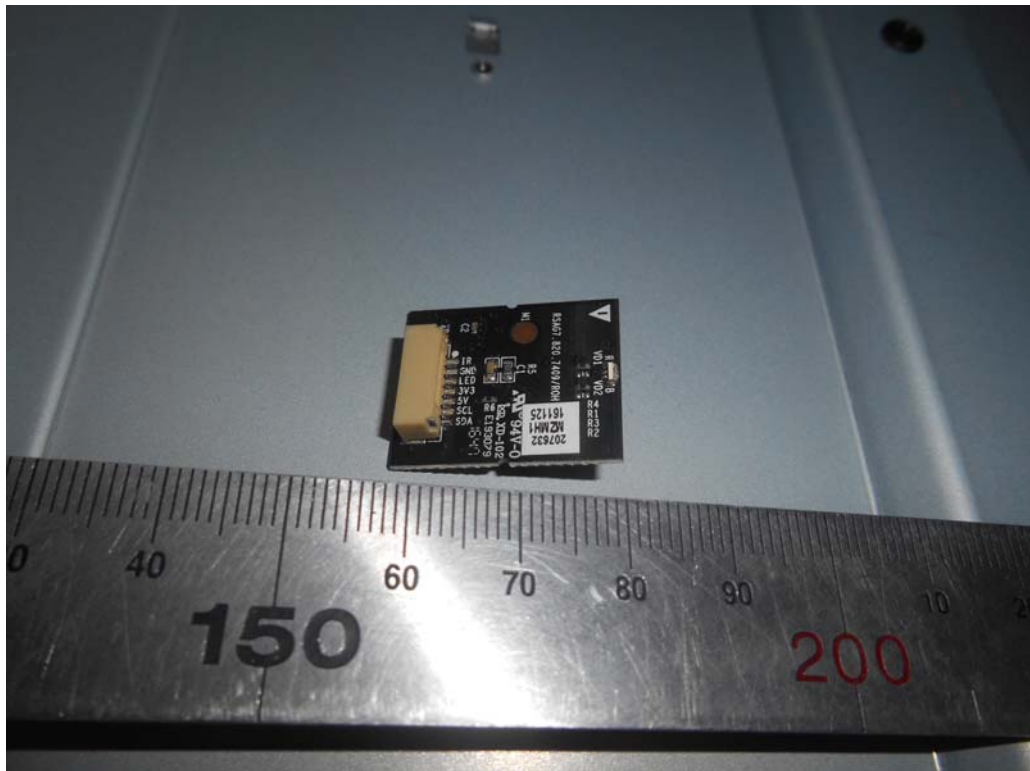


FIGURE 18
LED LCD TV (M/N: 65H6D)
IR BOARD (SOLDERED SIDE)

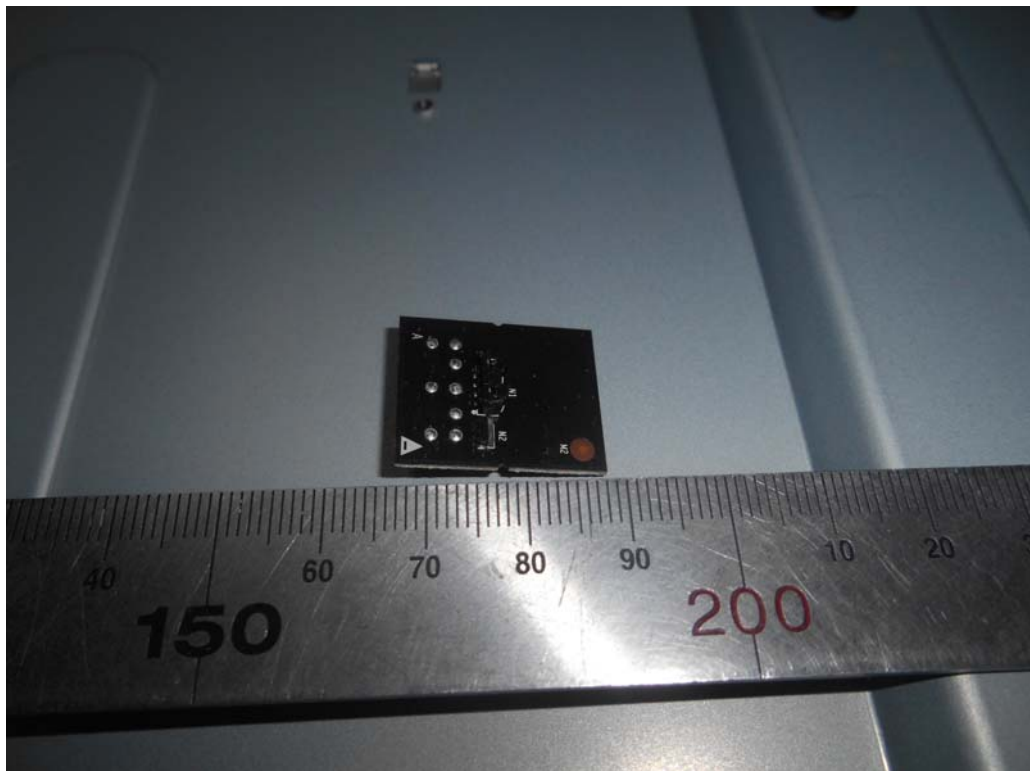


FIGURE 19
LED LCD TV (M/N: 65H6D)
DEBUG #1



FIGURE 20
LED LCD TV (M/N: 65H6D)
ANOTHER APPEARANCE FRONT VIEW

