

FIGURE 1
LED LCD TV (M/N: LC-55N6000U)
COVER REMOVED



FIGURE 2
LED LCD TV (M/N: LC-55N6000U)
LCD PANEL LABEL



FIGURE 3
LED LCD TV (M/N: LC-55N6000U)
PANEL BOARD (COMPONENT SIDE)



FIGURE 4
LED LCD TV (M/N: LC-55N6000U)
PANEL BOARD (SOLDERED SIDE)

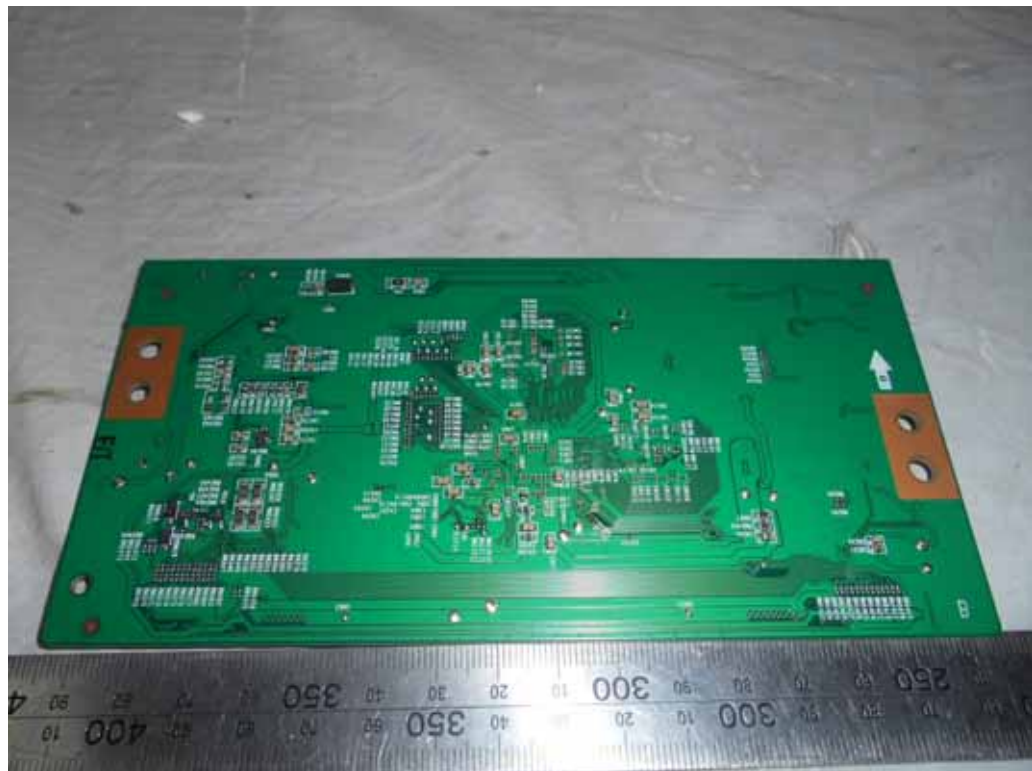


FIGURE 5
LED LCD TV (M/N: LC-55N6000U)
CHIP & CRYSTAL ON PANEL BOARD



FIGURE 6
LED LCD TV (M/N: LC-55N6000U)
MAIN BOARD (COMPONENT SIDE)



FIGURE 7
LED LCD TV (M/N: LC-55N6000U)
MAIN BOARD (SOLDERED SIDE)



FIGURE 8
LED LCD TV (M/N: LC-55N6000U)
CHIP & CRYSTAL ON MAIN BOARD



FIGURE 9
LED LCD TV (M/N: LC-55N6000U)
POWER BOARD (COMPONENT SIDE)



FIGURE 10
LED LCD TV (M/N: LC-55N6000U)
POWER BOARD (SOLDERED SIDE)

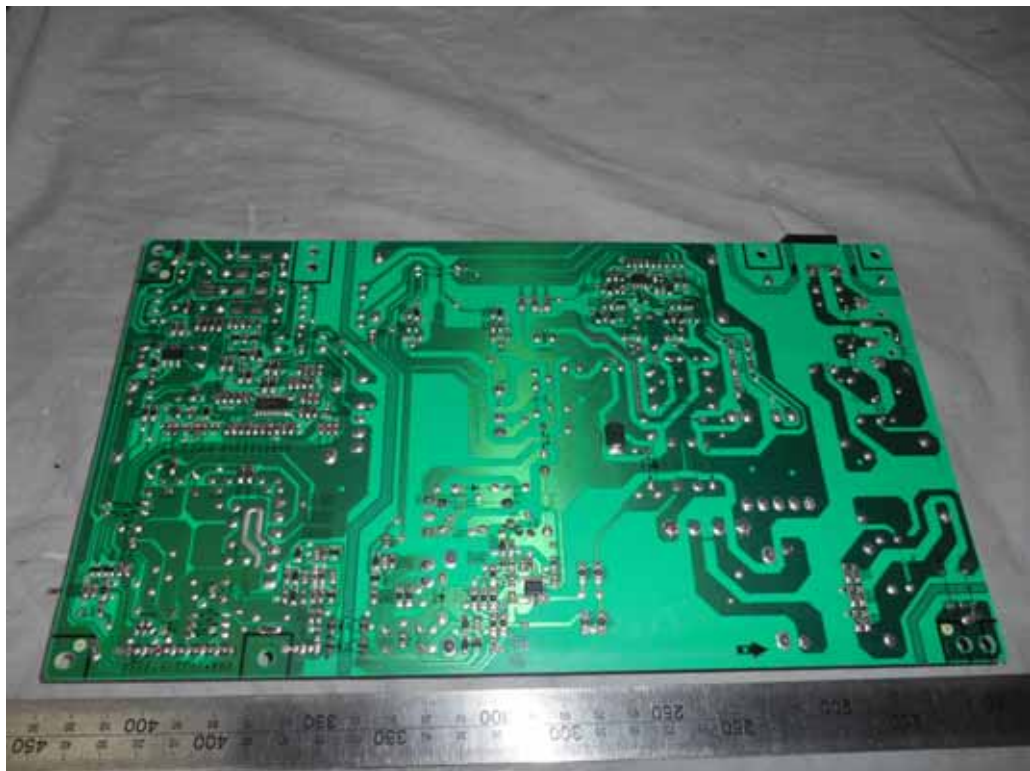


FIGURE 11
LED LCD TV (M/N: LC-55N6000U)
TUNER



FIGURE 12
LED LCD TV (M/N: LC-55N6000U)
TUNER BOARD (COMPONENT SIDE)



FIGURE 13
LED LCD TV (M/N: LC-55N6000U)
TUNER BOARD (SOLDERED SIDE)

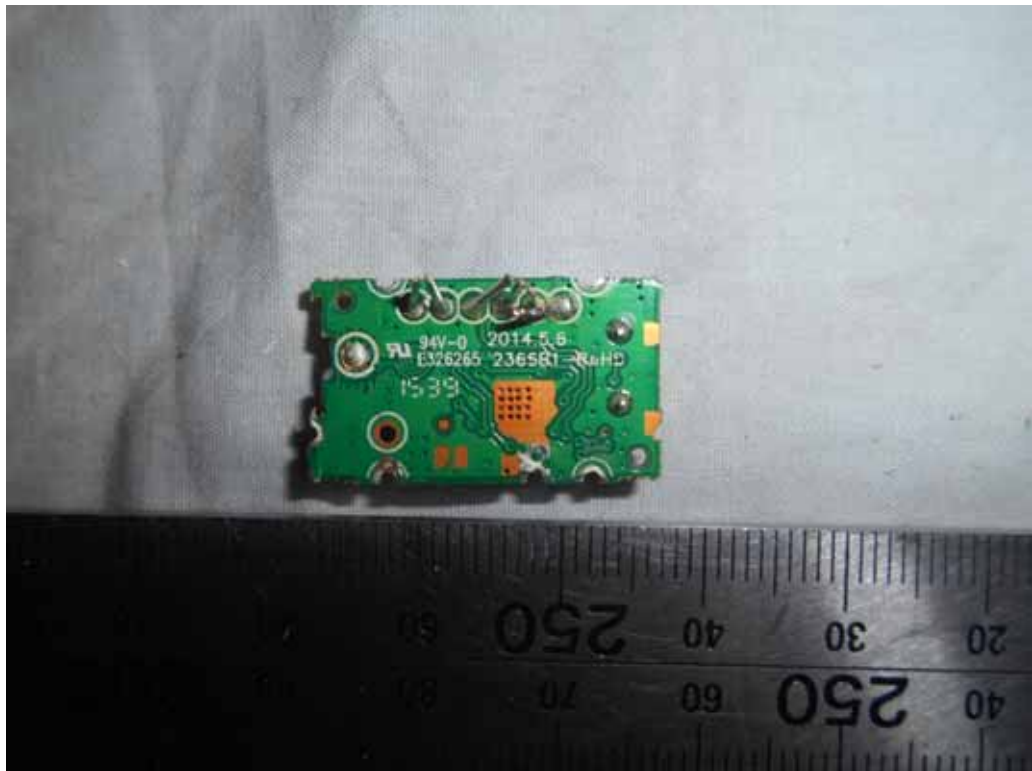


FIGURE 14
LED LCD TV (M/N: LC-55N6000U)
CHIP & CRYSTAL ON TUNER BOARD

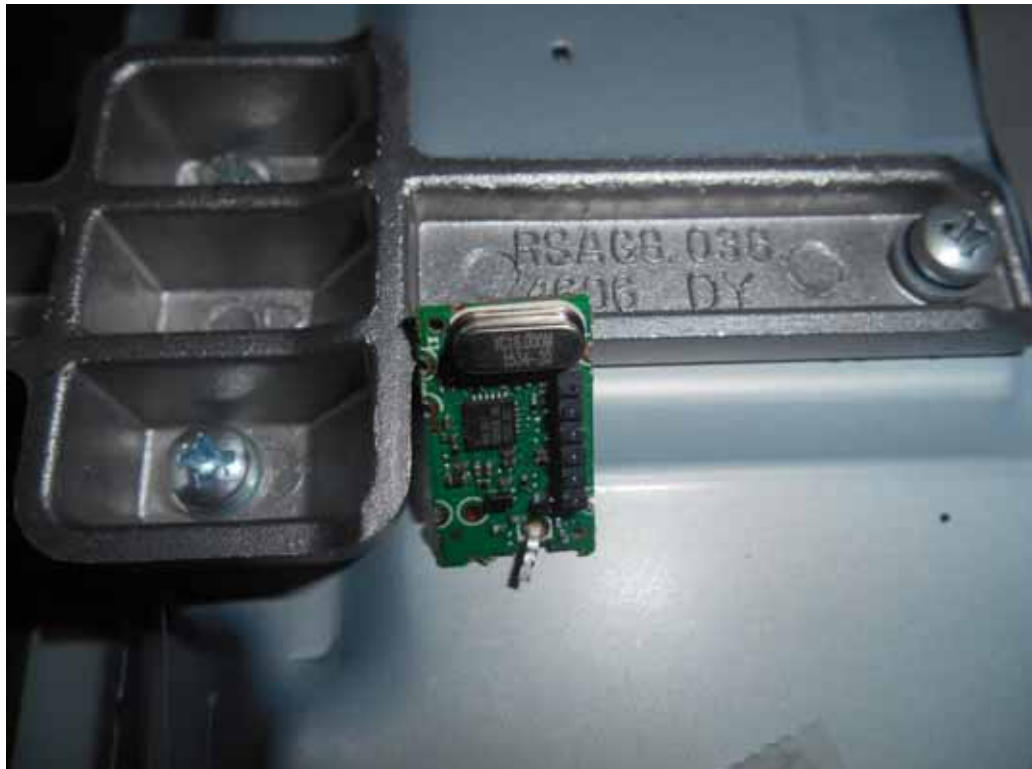


FIGURE 15
LED LCD TV (M/N: LC-55N6000U)
IR BOARD (COMPONENT SIDE)

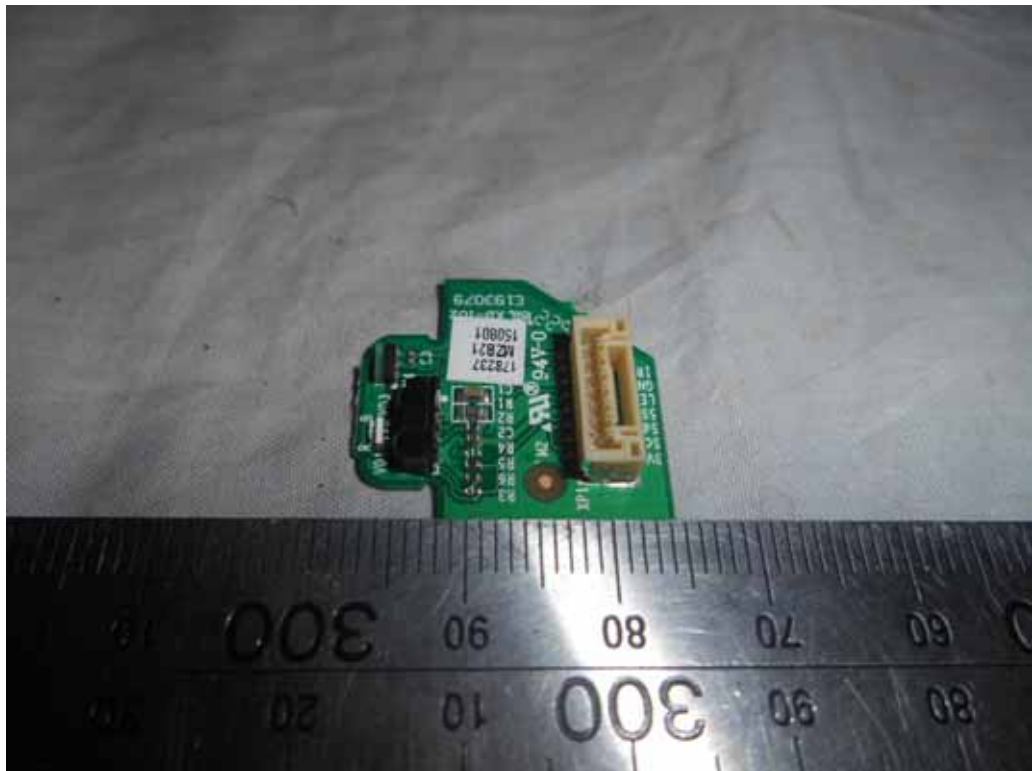


FIGURE 16
LED LCD TV (M/N: LC-55N6000U)
IR BOARD (SOLDERED SIDE)



The image shows a small electronic component, possibly a microcontroller or sensor module, mounted on a white printed circuit board (PCB). The component is rectangular with several pins visible along its edges. It is labeled with "CJ1529" and "SWK01". A ruler is placed below the component for scale, showing measurements in centimeters and millimeters.

A photograph of a green printed circuit board (PCB) with various electronic components and a ruler for scale. The PCB is populated with several integrated circuits (ICs) and discrete components. Labels on the board include 'KEY1', 'KEY2', 'KEY3', 'KEY4', 'KEY5', 'KEY6', 'KEY7', 'KEY8', 'KEY9', 'KEY10', 'KEY11', 'KEY12', 'KEY13', 'KEY14', 'KEY15', 'KEY16', 'KEY17', 'KEY18', 'KEY19', 'KEY20', 'KEY21', 'KEY22', 'KEY23', 'KEY24', 'KEY25', 'KEY26', 'KEY27', 'KEY28', 'KEY29', 'KEY30', 'KEY31', 'KEY32', 'KEY33', 'KEY34', 'KEY35', 'KEY36', 'KEY37', 'KEY38', 'KEY39', 'KEY40', 'KEY41', 'KEY42', 'KEY43', 'KEY44', 'KEY45', 'KEY46', 'KEY47', 'KEY48', 'KEY49', 'KEY50', 'KEY51', 'KEY52', 'KEY53', 'KEY54', 'KEY55', 'KEY56', 'KEY57', 'KEY58', 'KEY59', 'KEY60', 'KEY61', 'KEY62', 'KEY63', 'KEY64', 'KEY65', 'KEY66', 'KEY67', 'KEY68', 'KEY69', 'KEY70', 'KEY71', 'KEY72', 'KEY73', 'KEY74', 'KEY75', 'KEY76', 'KEY77', 'KEY78', 'KEY79', 'KEY80', 'KEY81', 'KEY82', 'KEY83', 'KEY84', 'KEY85', 'KEY86', 'KEY87', 'KEY88', 'KEY89', 'KEY90', 'KEY91', 'KEY92', 'KEY93', 'KEY94', 'KEY95', 'KEY96', 'KEY97', 'KEY98', 'KEY99', 'KEY100'. A ruler is placed below the PCB, showing measurements in inches and centimeters. The ruler has markings for 0, 10, 20, 30, 40, 50, 60, 70, 80, 90, 100, 110, 120, 130, 140, 150, 160, 170, 180, 190, 200, 210, 220, 230, 240, 250, 260, 270, 280, 290, 300, 310, 320, 330, 340, 350, 360, 370, 380, 390, 400, 410, 420, 430, 440, 450, 460, 470, 480, 490, 500, 510, 520, 530, 540, 550, 560, 570, 580, 590, 600, 610, 620, 630, 640, 650, 660, 670, 680, 690, 700, 710, 720, 730, 740, 750, 760, 770, 780, 790, 800, 810, 820, 830, 840, 850, 860, 870, 880, 890, 900, 910, 920, 930, 940, 950, 960, 970, 980, 990, 1000.

FIGURE 19
LED LCD TV (M/N: LC-55N6000U)
RF BOARD (COMPONENT SIDE)



FIGURE 20
LED LCD TV (M/N: LC-55N6000U)
RF BOARD (SOLDERED SIDE)



FIGURE 21
LED LCD TV (M/N: LC-55N6000U)
RF BOARD LABEL



FIGURE 22
LED LCD TV (M/N: LC-55N6000U)
CHIP & CRYSTAL ON RF BOARD



FIGURE 23
LED LCD TV (M/N: LC-55N6000U)
DEBUG #1



FIGURE 24
LED LCD TV (M/N: LC-55N6000U)
DEBUG #2

